



THE UNIVERSITY *of* EDINBURGH

Edinburgh Research Explorer

## Activation of endocytosis as an adaptation to the mammalian host by trypanosomes

**Citation for published version:**

Natesan, SKA, Peacock, L, Matthews, K, Gibson, W & Field, MC 2007, 'Activation of endocytosis as an adaptation to the mammalian host by trypanosomes', *Eukaryotic Cell*, vol. 6, no. 11, pp. 2029-37.  
<https://doi.org/10.1128/EC.00213-07>

**Digital Object Identifier (DOI):**

[10.1128/EC.00213-07](https://doi.org/10.1128/EC.00213-07)

**Link:**

[Link to publication record in Edinburgh Research Explorer](#)

**Document Version:**

Publisher's PDF, also known as Version of record

**Published In:**

Eukaryotic Cell

**Publisher Rights Statement:**

Free in PMC.

**General rights**

Copyright for the publications made accessible via the Edinburgh Research Explorer is retained by the author(s) and / or other copyright owners and it is a condition of accessing these publications that users recognise and abide by the legal requirements associated with these rights.

**Take down policy**

The University of Edinburgh has made every reasonable effort to ensure that Edinburgh Research Explorer content complies with UK legislation. If you believe that the public display of this file breaches copyright please contact [openaccess@ed.ac.uk](mailto:openaccess@ed.ac.uk) providing details, and we will remove access to the work immediately and investigate your claim.



## Activation of Endocytosis as an Adaptation to the Mammalian Host by Trypanosomes<sup>∇†</sup>

Senthil Kumar A. Natesan,<sup>1</sup> Lori Peacock,<sup>2</sup> Keith Matthews,<sup>3</sup> Wendy Gibson,<sup>2</sup> and Mark C. Field<sup>1\*</sup>

*The Molteno Building, Department of Pathology, Tennis Court Road, University of Cambridge, Cambridge CB2 1QP, United Kingdom<sup>1</sup>; School of Biological Sciences, University of Bristol, Bristol BS8 1UG, United Kingdom<sup>2</sup>; and Institute of Infection and Immunology Research, University of Edinburgh, West Mains Road, Edinburgh EH9 3JT, United Kingdom<sup>3</sup>*

Received 20 June 2007/Accepted 14 September 2007

**Immune evasion in African trypanosomes is principally mediated by antigenic variation, but rapid internalization of surface-bound immune factors may contribute to survival. Endocytosis is upregulated approximately 10-fold in bloodstream compared to procyclic forms, and surface coat remodeling accompanies transition between these life stages. Here we examined expression of endocytosis markers in tsetse fly stages in vivo and monitored modulation during transition from bloodstream to procyclic forms in vitro. Among bloodstream stages nonproliferative stumpy forms have endocytic activity similar to that seen with rapidly dividing slender forms, while differentiation of stumpy forms to procyclic forms is accompanied by rapid down-regulation of Rab11 and clathrin, suggesting that modulation of endocytic and recycling systems accompanies this differentiation event. Significantly, rapid down-regulation of endocytic markers occurs upon entering the insect midgut and expression of Rab11 and clathrin remains low throughout subsequent development, which suggests that high endocytic activity is not required for remodeling the parasite surface or for survival within the fly. However, salivary gland metacyclic forms dramatically increase expression of clathrin and Rab11, indicating that emergence of mammalian infective forms is coupled to reacquisition of a high-activity endocytic-recycling system. These data suggest that high-level endocytosis in *Trypanosoma brucei* is an adaptation required for viability in the mammalian host.**

*Trypanosoma brucei* is a protozoan parasite causing African sleeping sickness in humans and nagana in animals (4). The trypanosome insect vector is the tsetse fly (*Glossina* spp.) (Fig. 1). Completion of the life cycle necessitates multiple differentiation events to accomplish both maturation within and transition between hosts. In the mammalian bloodstream, trypanosomes exist as proliferative long slender (LS) forms that transform into quiescent short stumpy (SS) forms in a density-dependent manner (36). LS and SS forms express the variant surface glycoprotein (VSG) as a means of immune evasion via antigenic variation (7). The nonproliferative SS forms are thought to be preadapted for survival in the tsetse fly. During a blood meal the fly ingests SS forms that differentiate into the dividing procyclic stage (PCF) in the midgut (48).

*T. brucei* has a complex developmental cycle within the tsetse fly (47), and the entire process requires at least 2 weeks. Once midgut procyclic forms are established, development progresses in the proventriculus, with subsequent migration to the salivary glands (41, 47, 49). In the proventriculus at least four morphological forms may be distinguished. Procyclic trypomastigotes differentiate into long trypomastigote (LT) forms with an elongated nucleus which undergo further division, producing an asymmetrically dividing epimastigote (AsDE). AsDE division generates one postdivision long epimastigote (PdLE) and one

postdivision short epimastigote (PdSE) (41, 47). All forms can be recovered from salivary exudate produced from the foregut and mouthparts (41), but it is likely the PdSE that initiates salivary gland infection by attaching to the epithelium. These attached epimastigotes multiply and differentiate and subsequently detach into metacyclic forms, representing the final stage of the life cycle in the vector (44, 47, 49). Metacyclic forms reexpress VSG from a subset of specific VSG genes and are quiescent until inoculated into a mammalian host. They subsequently differentiate into long slender bloodstream forms (BSFs), completing the life cycle (44).

During trypanosome development, major changes to several cellular systems take place. In bloodstream forms, VSG assembles into a densely packed surface coat (7) which is lost on entering the fly, with procyclin dominating the procyclic cell surface (37–40). Endocytosis is clathrin dependent and developmentally regulated, being approximately 10-fold more active in cultured BSFs than in procyclic cells (1, 15, 29, 31). Increased endocytosis is associated with greater expression of the endocytic coat protein clathrin and the recycling endosome marker Rab11 (24, 29). Changes to expression, function, and location of endocytic proteins indicate significant remodeling of the endocytic apparatus during life cycle progression (17–20, 32). A potential immunological role for high-level endocytosis in BSFs comes from rapid capping and internalization of anti-VSG antibodies (6, 30, 32), but it is not evident whether there is also a role associated with life stages in the insect vector (18) or why the insect stage has reduced endocytic activity. Recently it has been suggested that this latter aspect protects the procyclic form from lytic factors in the blood meal (34).

Most experimental work focuses on cultured bloodstream and procyclic trypanosomes, and little is known about the cell

\* Corresponding author. Mailing address: The Molteno Building, Department of Pathology, Tennis Court Road, University of Cambridge, Cambridge CB2 1QP, United Kingdom. Phone: 44-1223-333734. Fax: 44-1223-333434. E-mail: mcf34@cam.ac.uk.

† Supplemental material for this article may be found at <http://ec.asm.org/>.

∇ Published ahead of print on 28 September 2007.

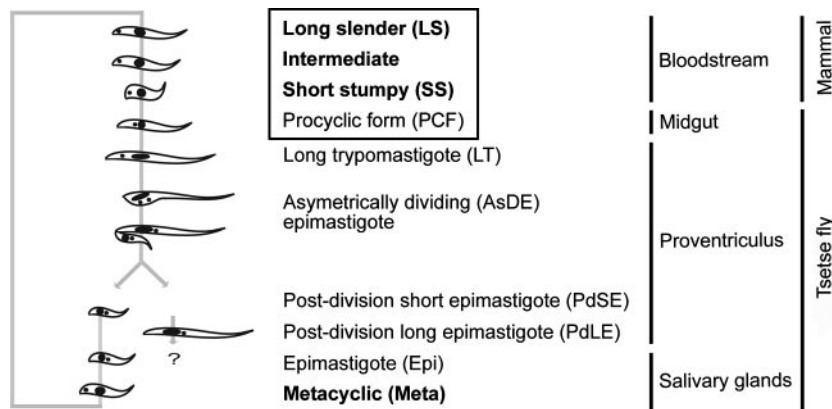


FIG. 1. Life cycle of *Trypanosoma brucei*. Designations of life stages that can be cultured in vitro are boxed, and those of stages expressing the variant surface glycoprotein are in bold. Following asymmetric division, the short epimastigote is believed to give rise to salivary gland infection; the subsequent fate of the postdivisional long epimastigote is not known at this time, as indicated by the question mark.

biology of the many uncultured stages from the insect vector. Bloodstream trypanosomes are capable of differentiating into procyclic forms in vitro (8) but cannot differentiate further into later stages of the life cycle. Here we addressed the role of endocytosis in the life cycle of *T. brucei* by measuring expression levels of Rab11 and clathrin in insect stages and monitoring changes that occur during differentiation.

#### MATERIALS AND METHODS

**Trypanosomes.** Several strains of trypanosomes were used for production of stumpy forms, fly infection, and in vitro culture. Bloodstream and procyclic form *Trypanosoma brucei brucei* strain Lister 427 was grown at 37°C in HMI-9 and SDM-79, respectively (10, 23). To generate short stumpy forms *T. brucei rhodesiense* EATRO 2340 (GUP 2962) was grown in mice pretreated with cyclophosphamide. Monomorphic slender forms were harvested 3 days postinfection and short stumpy forms after 7 days of infection when >80% of the population was stumpy. Bloodstream form *T. brucei brucei* J10 (MCRO/ZM/74/J10 [clone 1]) was used to infect tsetse flies. Cryopreserved aliquots were thawed and added to horse blood at  $\sim 4 \times 10^6$  trypanosomes per ml. For hourly dissections, blood obtained directly from an infected mouse was added to horse serum and fed to flies.

**Tsetse flies.** Experimental tsetse flies were from the Bristol laboratory colony of *Glossina morsitans morsitans*, maintained at 25°C and 70% relative humidity and fed on sterile defibrinated horse blood via a silicone membrane. The trypanosome-infected blood meal was supplemented at 60 mM *N*-acetylglucosamine to increase infection (35). Male flies were used 24 to 48 h posteclosion and caged in groups of approximately 25.

**Dissection.** Chilled flies were dissected and the required portions of the alimentary tract placed in drops of phosphate-buffered saline (PBS) on a microscope slide and inspected by microscopy. Infected tissues were transferred immediately to tubes containing 4% paraformaldehyde (PFA) in ice-cold Voorheis's modified phosphate-buffered saline (vPBS) and stored at 4°C.

**Immunofluorescence.** Trypanosomes were harvested by centrifugation, washed with PBS, and fixed with 4% PFA in ice-cold vPBS. Immunofluorescence was performed as described previously (14) with a few modifications. By use of an Immedge pen (Vector Laboratories, Burlingame, CA), three compartments were drawn on a poly-lysine slide (Polysine; VWR International, Leuven, Belgium). A 200- $\mu$ l volume of 4% PFA-fixed procyclic cells was placed in the first compartment and a 200- $\mu$ l volume of fixed bloodstream forms in the third compartment as standards. In the central compartment was placed 200  $\mu$ l of fixed samples from fly or mouse infections. The slides were incubated in a moist chamber, and the cells were allowed to settle on the slide. Staining was performed as described previously (14), with primary antibody concentrations of anti-CLH at 1:200, anti-Rab11 at 1:200, anti-BiP at 1:1,000, and anti-p67 at 1:500 and concentrations of secondary antibodies anti-rabbit Cy3 (Sigma) at 1:200 and anti-mouse Oregon green (Molecular Probes) at 1:500.

**ConA and transferrin uptake.** Mid-log-phase BSF from culture or a mixture of LS and SS cells from mouse blood were harvested and washed in serum-free

HMI-9 containing 1% bovine serum albumin. Cells were resuspended at a concentration of  $\sim 1 \times 10^7$  cells/ml and incubated for 30 min at 37°C. A total of 50  $\mu$ g/ml of fluorescein-labeled concanavalin A (ConA) (Vectalabs) or 125  $\mu$ g/ml of Alexa-conjugated transferrin (Molecular Probes) was added. Aliquots were removed and placed immediately on ice. Cells were washed with vPBS, fixed with 4% PFA, and mounted (14).

**Fluorescence quantitation.** Slides were examined with a Nikon Eclipse E600 epifluorescence microscope fitted with optically matched filter blocks and a Photometrix CoolSnap FX charge-coupled-device camera. Data were acquired under nonsaturating conditions (<70% full intensity), and identical exposures (120 ms for clathrin, Rab11, p67, BiP, and ConA and 250 ms for TF) were used for all markers throughout. Fluorescence within a region of interest was quantified using Metamorph V3 (Universal Imaging Corp.). For presentation only, acquired gray scale images were falsely colored, enhanced, and assembled in Adobe Photoshop CS (Adobe Systems Inc.).

**Statistics.** To test correlation between values representing fluorescence results from different cohorts, the Mann-Whitney U test was used.

**Protein electrophoresis and Western blotting.** Lysates from  $1 \times 10^6$  to  $1 \times 10^7$  cells were separated on 12% sodium dodecyl sulfate-polyacrylamide gel electrophoresis (SDS-PAGE) gels and wet blotted onto polyvinylidene difluoride membrane (Immobilon; Millipore, Bedford, MA), blocked with 5% milk in Tris-buffered saline–0.5% Tween 20 for 2 h at room temperature and probed with antibody to CLH at 1:1,000, Rab11 at 1:2,000, Rab5A at 1:1,000, BiP at 1:10,000, and CAP5.5 at 1:10 in 1% milk followed by horseradish peroxidase-conjugated goat anti-rabbit immunoglobulin G (IgG) (Sigma) or rabbit anti-mouse IgG (Sigma) at a 1:10,000 dilution in 1% milk–Tris-buffered saline–0.5% Tween 20. Detection was by chemiluminescence and exposure to X-ray film (Kodak BioMax MR), and quantification was performed using ImageJ software (<http://rsb.info.nih.gov/ij/>).

**In vitro differentiation.** Short stumpy forms were harvested from infected mice by cardiac puncture and purified over a DE52 column by use of PSG buffer (0.488 g/liter  $\text{NaH}_2\text{PO}_4$ , 2.55 g/liter NaCl, 8.08 g/liter  $\text{Na}_2\text{HPO}_4$ , 15 g/liter D-glucose [pH 7.8]) (27). Purified cells were diluted at  $\sim 2 \times 10^6$  cells/ml into SDM-79–6 mM *cis*-aconitate and incubated at 27°C. Samples were taken at various times and lysed in SDS-PAGE sample buffer (26).

**Metabolic labeling.** Cells were washed twice in PBS, resuspended at  $4 \times 10^7$  cells/ml in Met/Cys-free RPMI 1640 medium–10% dialyzed fetal bovine serum, and incubated at 37°C (BSF) or 27°C (PCF) for 1 h. Cells were pulse labeled with  $^{35}\text{S}$ -labeled Pro-mix (Amersham Biosciences) at 200  $\mu\text{Ci}/\text{ml}$  for 1 h and chased by addition of 3 ml complete media. A total of  $10^7$  cells were removed at each time point, pelleted, snap frozen on dry ice, and stored at  $-80^\circ\text{C}$ .

**Immunoprecipitation.** Cell pellets were lysed with a mixture of 100  $\mu\text{l}$  25 mM Tris-Cl (pH 7.5), 150 mM NaCl, 1% NP-40, 0.5% sodium deoxycholate, 0.1% SDS, and complete protease inhibitors (Roche). Nuclei were removed by centrifugation for 30 s in a microcentrifuge, and the supernatant was transferred to a clean microfuge tube, 13  $\mu\text{l}$  10% SDS was added, and the lysate was heated at 95°C for 5 min. Samples were centrifuged, and the supernatant was diluted with 4 volumes of a mixture of 190 mM NaCl, 50 mM Tris (pH 7.5), 6 mM EDTA, 1.25% Triton X-100, and protease inhibitors and precleared with 30  $\mu\text{l}$  of Pan-sorbin at 4°C for 1 h followed by pelleting. To the supernatant, 2.5  $\mu\text{l}$  of

anti-clathrin serum was added at 4°C overnight and 20  $\mu$ l of protein A-Sepharose beads was added for 1 h at room temperature. Beads were washed twice with a mixture of 150 mM NaCl, 50 mM Tris (pH 7.5), 5 mM EDTA, 0.1% Triton X-100, and 0.02% SDS followed by two washes with a mixture of 1 M NaCl, 50 mM Tris (pH 7.5), and 0.02% Triton X-100 and finally resuspended in SDS sample buffer. Samples were separated by SDS-PAGE and exposed to a phosphorimager plate for 2 days. Radioactivity was quantified by densitometry.

**Cycloheximide treatment.** BSF cells at  $1 \times 10^6$  cells/ml were incubated with 100  $\mu$ g/ml of cycloheximide in complete HMI-9. Samples were collected for up to 8 h and analyzed by Western blotting.

## RESULTS

**Long slender and short stumpy forms have similar endocytic activities.** We examined expression of marker proteins at the single-cell and multiple-cell population levels. We used clathrin, Rab5A, Rab11, and p67, well-characterized marker proteins for endosomal vesicle coats, early and recycling endosomes, and the lysosome (13, 25, 29). We included trypanosome BiP to represent an unrelated marker for the endoplasmic reticulum (3). Previous work demonstrated a correlation between endocytic activity and clathrin expression (29) and also between endocytosis and recycling activity for Rab5A and Rab11 expression, respectively (32).

Expression of clathrin, Rab5A, Rab11, and BiP in cultured BSF and PCFs and mouse-derived LS and SS cells was determined by Western blotting. No significant differences in expression levels of clathrin, Rab5A, or Rab11 were observed for any of the bloodstream forms (Fig. 2A). However, a 10-fold decrease in clathrin levels and a 5-fold decrease in Rab11 levels in cultured PCF cells compared to cultured bloodstream form were observed (Fig. 2A) that reflected reduced endocytic-recycling activity in the PCF (1, 24). We found decreased expression of BiP in PCF compared with BSF, with the PCFs expressing approximately 60% of the BSF level (see Fig. S1 in the supplemental material) rather than the threefold difference noted previously (3); this difference is likely ascribable to strain and culturing effects.

To directly quantitate endocytic activity, uptake of ConA and transferrin was assayed in cultured BSF, LS, and SS parasites. At 0 min, ConA and transferrin were seen in the flagellar pocket only (Fig. 3A), but after 10 min similar internal levels of ConA and transferrin were found in all cell types, and these levels remained unchanged for up to 30 min (Fig. 3B). These data suggest no significant difference in levels of receptor-mediated endocytosis between BSF, LS, and SS (Fig. 3B) and together with the Western blot data suggest similar endocytic activities for cultured BSF and in vivo LS and SS forms. Further, no significant alteration to endocytic activity accompanies differentiation of LS to SS forms.

**Validation of immunofluorescence for quantification.** We compared Western blot quantitation with analysis of the same cell batches by immunofluorescence. We found equal levels of clathrin and Rab11 in in vitro- and in vivo-cultured bloodstream forms and 10- and 5-fold decreases in the levels of clathrin and Rab11, respectively, in PCFs (Fig. 2B and 4B). No significant change in p67 levels was observed by immunofluorescence between life stages, and only a small decrease in BiP expression in the PCF was observed (Fig. 2B and 4B; also see Fig. S2 in the supplemental material). Thus, results showing a high degree of coincidence between endocytic activity and

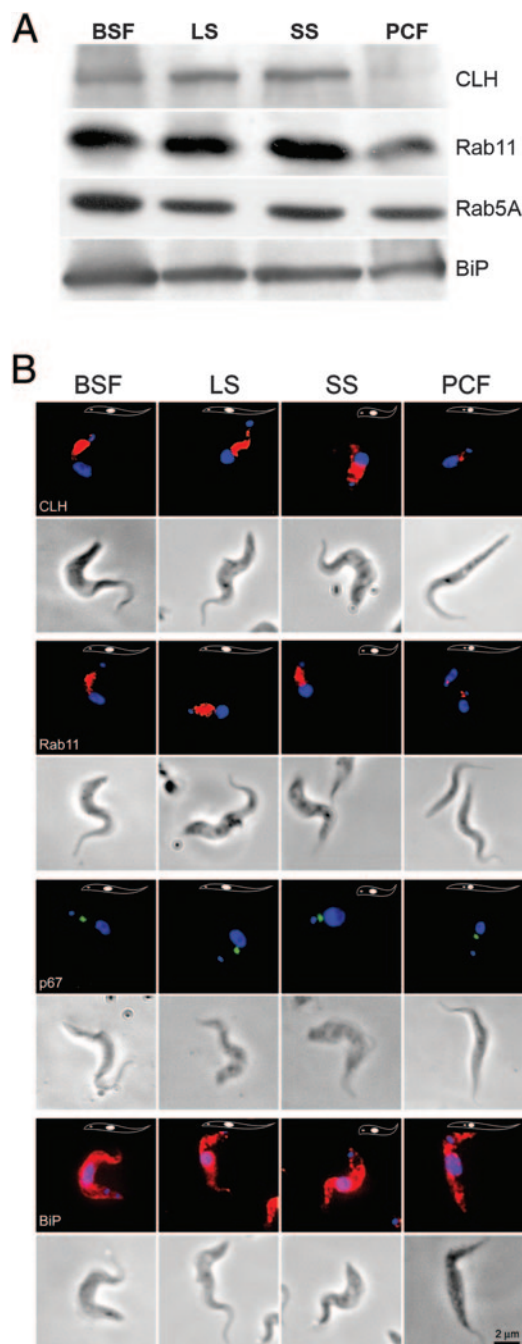


FIG. 2. Expression of clathrin and Rab11 is high in all mammalian stages. (A) Western blots of *T. brucei* analyzed using antibodies to clathrin, Rab5A, Rab11, and BiP. Note that expression of Rab5A is essentially constant for all life stages but that clathrin and Rab11 expression levels decrease specifically in the PCF. (B) Location of clathrin, Rab11, p67, and BiP in cultured stages of *T. brucei*. Immunofluorescence images of parasites stained with antibody to clathrin, Rab11, BiP (red), and p67 (green) are shown. Cells were counterstained with DAPI (4',6'-diamidino-2-phenylindole) (blue) for DNA. Phase-contrast images are shown below the respective fluorescence images. The relative positions of the antigens remain similar in all life stages. Scale bar, 2  $\mu$ m.

quantitation of clathrin and Rab11 by both Western blotting and immunofluorescence were obtained.

**Down-regulation of endocytic activity during differentiation to procyclic forms.** Expression of clathrin, Rab11, and p67 was

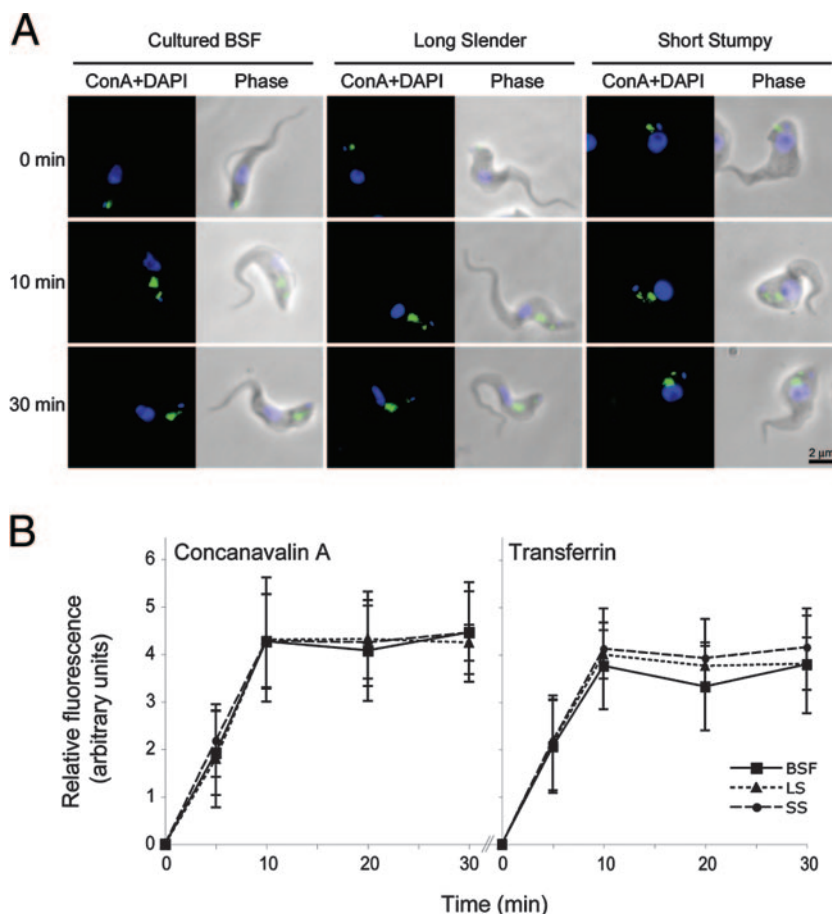


FIG. 3. In vitro-cultured BSF and long slender and stumpy cells have similar rates of endocytosis. (A) Accumulation of ConA and transferrin. Trypanosomes were incubated with fluorescein-conjugated ConA or Alexa Fluor-conjugated transferrin. At 0 min neither ConA nor transferrin is internalized, but by 10 min an internal pool of ConA and transferrin is present. Raw data for ConA are shown. (B) Quantification of internalized ConA and transferrin. Approximately 40 individual BSF or SS cells and approximately 25 LS cells were analyzed at each time point. Mean values for total fluorescence intensity are plotted against time; error bars represent standard deviations. Abbreviations are as introduced in the text.

determined using trypanosomes isolated from tsetse flies 24 h after infection (Fig. 4A). *T. brucei* J10 BSFs express levels of clathrin and Rab11 similar to those seen with cultured BSFs (data not shown), but after differentiation in the insect midgut, expression of clathrin and Rab11 was reduced 10- and 5-fold, respectively, levels similar to those seen with cultured PCFs (Fig. 4A and 4B) and indicating that endocytic remodeling is a rapid event occurring within 24 h.

We exploited an in vitro model to follow the kinetics of differentiation more closely (28, 50) using the well-characterized pleomorphic cell line EATRO 2340. Trypanosomes enriched in stumpy forms (>80%) were harvested from infected mice and placed under in vitro differentiation conditions. Differentiating trypanosomes were analyzed for VSG, CAP 5.5, a stage-regulated cytoskeleton-associated protein induced during differentiation (21, 22, 28), the endocytic markers clathrin and Rab11, and also cell number (Fig. 5). Coomassie staining of total protein lysates revealed loss of VSG after 4 h (Fig. 5A), while parasite numbers remained constant for ~14 h until reentry into the cell cycle (Fig. 5B). CAP5.5 appeared by 8 h of differentiation (Fig. 5C). These data are consistent with prior analyses of this transition (28). Clathrin levels remained un-

changed at 14 h but decreased by 24 h, which is consistent with the rapid attainment of PCF expression levels in midgut trypanosomes (Fig. 5A and C). Rab11 expression decreased more rapidly (Fig. 5A and C). Differential loss of Rab11 and clathrin could have resulted from delayed deactivation of clathrin expression or via the intrinsic half-lives of the proteins. The half-life of clathrin was estimated by pulse-chase metabolic labeling and immunoprecipitation, and in both BSF and PCF ~50% of the clathrin was still present at 24 h, indicating a stable protein (Fig. 6A). By contrast, Rab11 levels diminished to less than 30% after only 6 h (Fig. 6B). Therefore, differential loss of clathrin and Rab11 during differentiation can be accounted for by the protein half-life.

**Endocytosis is upregulated specifically in metacyclics.** Multiple life stages of trypanosomes in the insect vector were harvested by dissecting the midgut, proventriculus, and salivary glands of tsetse flies 30 days following infection. Expression of Rab11 and clathrin in 30-day midgut PCFs was similar to that seen with cultured or 24-h midgut PCFs (Fig. 7A). From the proventriculus, LT, AsDE, PdSE, and PdLE stages were obtained. Clathrin and Rab11 expression remained at PCF levels, suggesting no reactivation of endo-

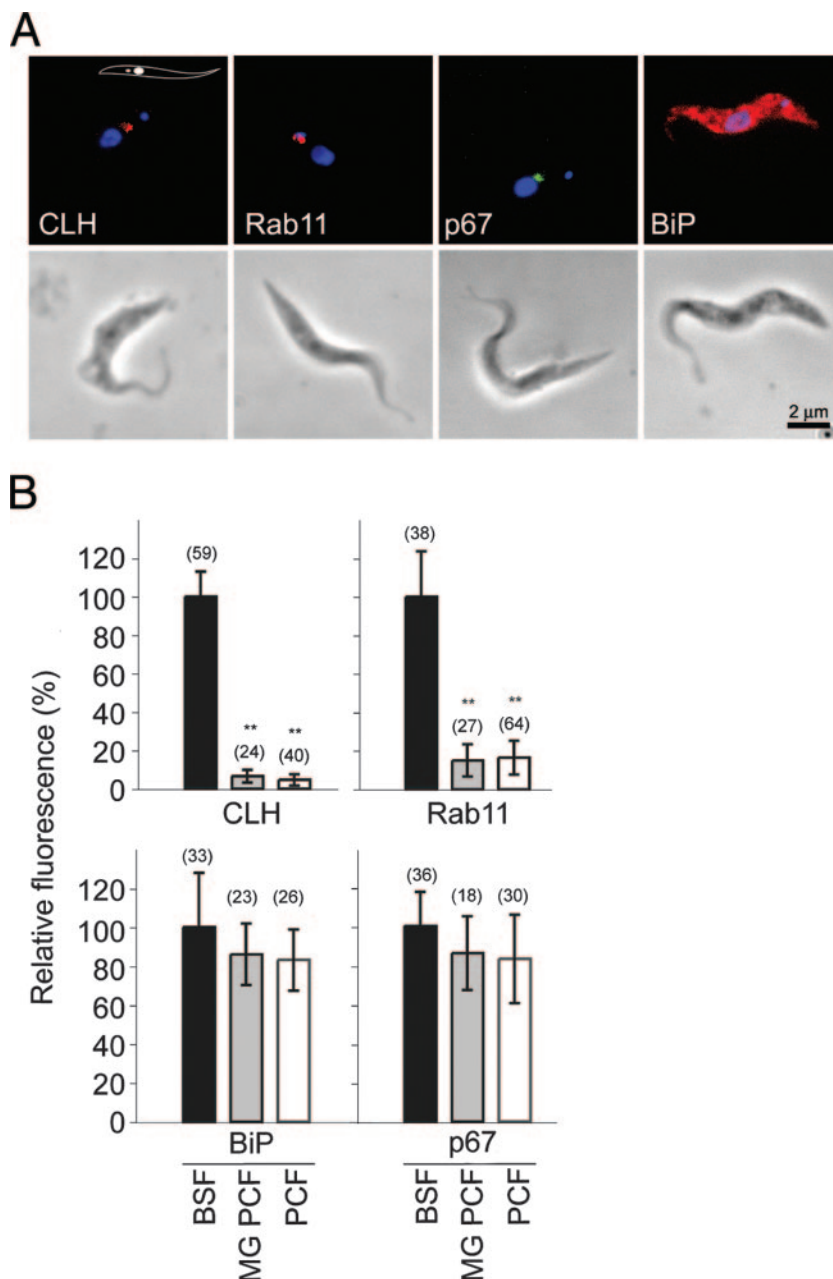


FIG. 4. Clathrin and Rab11 levels are similar in the cultured and midgut (MG) procyclic forms of *T. brucei*. (A) Clathrin, Rab11, p67, and BiP in midgut procyclic forms of *T. brucei* after 24 h of tsetse fly infection. Immunofluorescence of midgut PCFs, showing parasites stained with antibody to clathrin, Rab11, BiP (red), and p67 (green), is presented. Cells were counterstained with DAPI (blue) for DNA. Phase-contrast images are shown below the respective fluorescence images. Scale bar, 2  $\mu$ m. Note that locations of antigens are highly similar to those of cultured PCFs (Fig. 2B). (B) Quantitation of fluorescence for clathrin, Rab11, p67, and BiP in midgut PCFs 24 h after a blood meal. The levels of clathrin and Rab11 in midgut cells are similar to cultured PCF levels. Numbers in parentheses indicate the numbers of cells analyzed for each life cycle stage. Values show the mean and standard deviations. \*\*, statistically significant difference compared to bloodstream levels at  $P < 0.001$ .

cytosis in trypanosomes during proventricular development (Fig. 7A). Trypanosomes were obtained as epimastigote and metacyclic forms from the salivary glands. Expression of clathrin and Rab11 was increased threefold in epimastigotes compared to midgut stages (Fig. 7A) and was increased fivefold in metacyclics, bringing expression of both antigens close to BSF levels (Fig. 7C). Levels of the lysosomal marker p67 showed no significant change between life cycle stages in

the midgut, proventriculus, or salivary glands (Fig. 7B and 7C), but there was a reduction in total levels of BiP in several life stages within the tsetse fly (Fig. 7C). As parasites move from midgut to proventriculus, they become elongated, with reduced cell volume. Decreased volume can account for much of the variation in total BiP levels. We also observed that the positions of clathrin and Rab11 remained anterior to the kinetoplast as the nucleus relocated from the

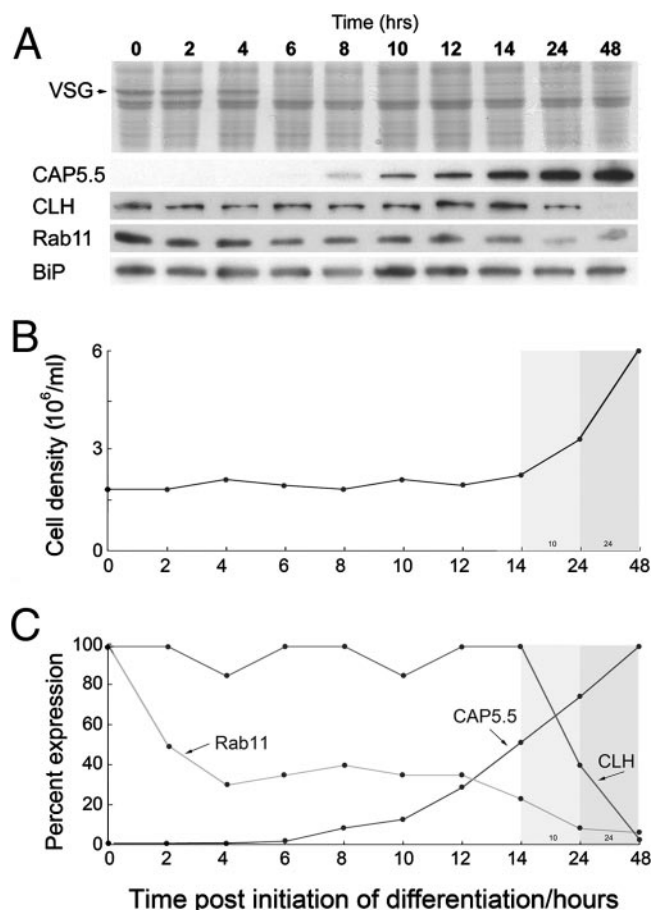


FIG. 5. Kinetics of clathrin and Rab11 down-regulation during in vitro differentiation of *T. brucei*. Trypanosomes, containing >80% stumpy forms (see Materials and Methods), were placed under in vitro differentiation conditions. (A) Protein lysates stained with Coomassie blue; VSG (molecular weight, ~62,000) is indicated. (B) Cell density during differentiation. (C) Levels of clathrin and Rab11 diminish whereas CAP5.5 levels increase during differentiation of BSF to PCF forms in culture as detected by Western blotting. Note that the regions of panels B and C between 14 and 48 h are shaded to indicate a change in the time base.

anterior region of the cell to the posterior region and back again during differentiation (Fig. 7A and B).

## DISCUSSION

Endocytosis and recycling are developmentally regulated in trypanosomes, but the role that the processes play in parasite survival remains ill defined (12). High endocytic activity correlates with VSG expression and rapid internalization of surface-bound antibodies (5, 7, 30). Studies have been restricted to cultured BSF and PCF cells and ignored the quiescent stages, i.e., stumpy BSFs and metacyclics, and those life stages present within the tsetse fly. By analysis of tsetse fly-derived material and in vitro differentiation, we have begun to explore these aspects.

Expression of clathrin and Rab11 is rapidly attenuated upon entry of the BSF trypanosome into the fly and is complete after 24 h. Based on the respective turnover rates of these two proteins

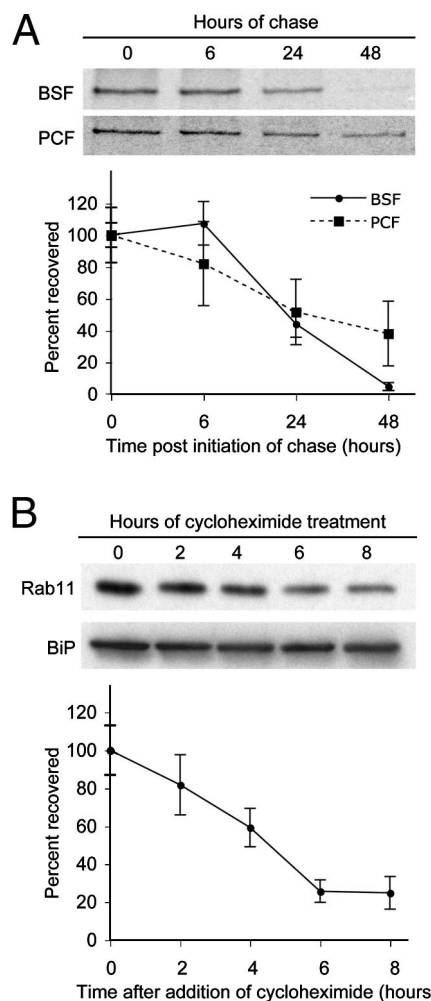
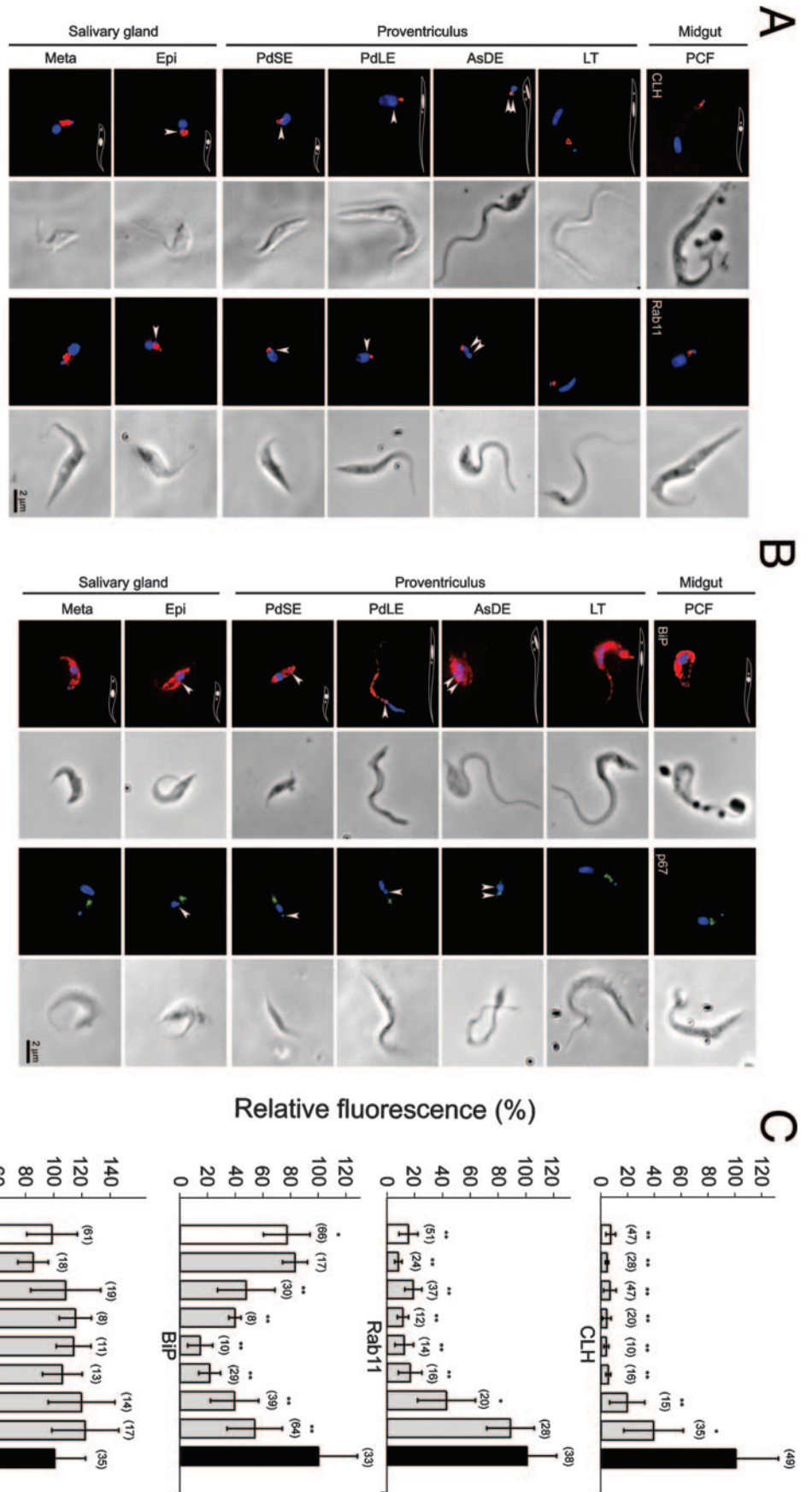


FIG. 6. Differential turnover of clathrin and Rab11. (A) Half-life of clathrin. Clathrin levels were determined in BSF and PCF cells by radioimmunoprecipitation following a 1-h pulse with  $^{35}\text{S}$ -Met. Raw data at top and the lower graph show data from two replicate experiments together with standard errors. (B) Half-life of Rab11 in BSF trypanosomes. BSF parasites were treated with 100  $\mu\text{g}/\text{ml}$  cycloheximide, and residual levels of Rab11 were determined by Western blotting, using BiP as a loading control. Note that BiP is known to be highly stable (2). The graph shows the mean results of two determinations with standard errors; the inset shows a representative blot.

and the expression profile during in vitro differentiation, it is likely that down-regulation of both Rab11 and clathrin occurs early in differentiation. As protein is lost during the early and nonreplicating periods of differentiation, this must be active turnover and not simply a result of dilution. Expression of endocytic and recycling markers remains low throughout the greater part of the period in the tsetse fly, indicating that high endocytic activity is not required either for defense against insect immune factors or for remodeling of surface coat molecules (46). Reactivation of clathrin and Rab11 is observed in salivary gland stages, particularly metacyclics, and is coincident with reactivation of VSG, but this does not include p67, the lysosomal marker, which is expressed at a constant level (Fig. 8). The relative positions of the early and recycling endosomes with respect to the kinetoplast remain remarkably constant such that these compartments are



**FIG. 7.** Expression of clathrin, Rab11, BiP, and p67 in *T. brucei* during development in insect flies. Localization of antigens in tsetse flies. Immunofluorescence of PCF in midgut, LTs, AsDEs, PdLE, and PdSE in the proventriculus, and epimastigotes (Epi) and metacyclic forms (Meta) in salivary glands. Phase-contrast images are shown below the respective fluorescence images. Representative images shown here are false colored and exposure enhanced for presentation purposes. Scale bar: 2  $\mu$ m. (A) Clathrin and Rab11. Parasites are stained for CLH and Rab11 (red) and costained with DAPI (blue) for DNA. (B) BiP and p67. Parasites were stained for BiP (red) or (green) and costained with DAPI (blue) for DNA. In both panels, arrowheads indicate the kinetoplast and the scale bar represents 2  $\mu$ m. (C) Quantitation of clathrin, Rab11, BiP, and p67 fluorescence. Numbers in parentheses indicate the numbers of cells analyzed for each life cycle stage; values show means and standard deviations. \* and \*\*, statistically significant difference compared to BSF levels ( $P < 0.01$  and  $P < 0.001$ , respectively).



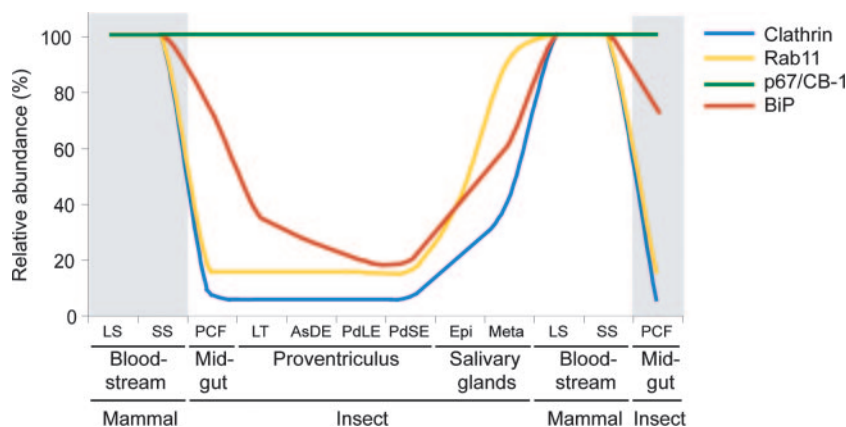


FIG. 8. Activity of endocytic and recycling systems through the trypanosome life cycle. Endocytic and recycling activity is high in BSF stages; this activity is retained following differentiation to the nonproliferative stumpy form. Both systems are rapidly down-regulated following differentiation to the insect form within 24 h. Both recycling and endocytosis remain at low levels throughout development in the tsetse fly except for the latter stages. In the metacyclic form, expression of Rab11 and clathrin increases, probably as a component of preadaptation to the mammalian host. By contrast, levels of p67, a lysosomal marker, are similar through the entire life cycle. Levels of BiP, an endoplasmic reticulum marker, are higher in the mammalian bloodstream forms and slightly reduced in the insect stages; the lower level of BiP, particularly in the proventricular forms, is due to the smaller size of the parasites. The model assumes that recycling activity is proportional to expression levels of Rab11 and that endocytosis is similarly proportional to clathrin protein levels, an assumption that is supported by published work (29, 32, 33). Shading is used to indicate separate life cycles, with the transition of BSF to PCF arbitrarily considered to be the start or end of a cycle. Clathrin is shown in blue, Rab11 in yellow, p67 in green, and BiP in red. Epi, epimastigote; Meta, metacyclic form.

almost always located anterior to the kinetoplast and close to the flagellar pocket. We also found no change in the uptake of ConA and transferrin or expression of clathrin and Rab11 between stumpy and long slender BSFs, suggesting that the stumpy form retains an elevated level of endocytosis characteristic of rapidly dividing BSF cells. All of these data point to a high rate of endocytosis being a factor that is required for survival within the mammalian host.

Differentiation from BSF to PCF trypanosomes is characterized by removal of the VSG surface coat and the acquisition of procyclin (40). Rapid shedding of VSG occurs mainly by endoproteolysis, mediated by zinc metalloprotease (MSP-B) activity and supported by glycosylphosphatidylinositol-specific phospholipase C-mediated glycosylphosphatidylinositol hydrolysis (16). A relatively low rate of loss of clathrin expression during the early phase of the differentiation process may facilitate efficient continued endocytosis and recycling of VSG and delivery to these hydrolases to complete surface remodeling. For established insect stages, down-regulation of endocytosis suggests a survival advantage, although the pathway is not fully shut down as procyclics endocytose low-density lipoprotein, fluid-phase markers, and cell surface proteins (18, 33). This modulation is not due to a requirement to avoid endocytosis of human serum lytic factors (34), as mutant PCFs with BSF levels of endocytosis are not sensitive to lysis by human serum (S.K.A.N. and M.C.F., unpublished data). Down-regulation may simply conserve energy, as the contribution of endocytosis to ATP consumption is considerable, and the movement away from the mammalian host likely removes the constraint requiring highly active endocytosis, although avoidance of uptake of fly-derived trypanocidal factors cannot be eliminated as a possibility.

Metacyclic trypanosomes are nonproliferative and resistant to human serum trypanosome lytic factor (9) and express VSG from a restricted set of metacyclic-specific VSG genes (6, 45). Reactivation of high-level expression of clathrin and Rab11

indicates increased endocytic activity, and this observation is supported by earlier ultrastructural studies of metacyclics (43). Among models to explain why reactivation of endocytosis accompanies reacquisition of mammalian infectivity we envisage three possibilities: that endocytosis represents a component of the immune evasion system, that there is a requirement for high rates of endocytosis and recycling due to the VSG coat, and that there is a nutritional requirement. In endemic areas many of the available hosts may have been previously infected with *T. brucei* and harbor an antibody response to metacyclic and early expressed VSGs, suggesting a need for avoiding antibody recognition immediately on entering a mammalian host. Association of endocytosis with removal of immunoglobulin from the parasite surface is clearly supportive of such a role (6, 32). The second hypothesis, that VSG expression necessitates rapid endocytosis and recycling, is supported both by the demonstration that interfering with VSG expression compromises the ability of parasites to progress through the cell cycle (42) and by the presence of VSG myristate proofreading activity at the cell surface (11), suggesting a VSG monitoring process. We consider the nutrition hypothesis to be the least likely due to the results showing similar growth rates for BSF and PCF in vitro and to direct evidence that endocytosis in the PCF is not growth rate limiting (33).

In summary, we demonstrate a strong correlation of expression levels of clathrin and Rab11 with expression of VSG and mammalian infectivity, which indicates that remodeling of the endocytic system is a component of the program of BSF-to-PCF differentiation and also of metacyclogenesis in tsetse flies. These data clearly imply that the endocytic and recycling pathways are necessary for survival in the mammalian host.

#### ACKNOWLEDGMENTS

This work was supported by the Wellcome Trust.

We are indebted to Reuben Sharma and Mark Carrington (Cambridge) for much advice on identification of the various life cycle stages. We are very grateful to James Bangs (Madison) and Keith Gull (Oxford) for antibodies, Angela Pinot de Moira (Cambridge) for assistance with statistics, Vanessa Ferris (Bristol) for assistance with tsetse fly experiments, and Deborah Hall (Edinburgh) for isolation of trypanosomes from mice.

## REFERENCES

- Allen, C. L., D. Goulding, and M. C. Field. 2003. Clathrin-mediated endocytosis is essential in *Trypanosoma brucei*. *EMBO J.* **22**:4991–5002.
- Bangs, J. D., E. M. Brouch, D. M. Ransom, and J. L. Roggy. 1996. A soluble secretory reporter system in *Trypanosoma brucei*. Studies on endoplasmic reticulum targeting. *J. Biol. Chem.* **271**:18387–18393.
- Bangs, J. D., L. Uyetake, M. J. Brickman, A. E. Balber, and J. C. Boothroyd. 1993. Molecular cloning and cellular localization of a BiP homologue in *Trypanosoma brucei*. Divergent ER retention signals in a lower eukaryote. *J. Cell Sci.* **105**(Pt. 4):1101–1113.
- Barrett, M. P., R. J. Burchmore, A. Stich, J. O. Lazzari, A. C. Frasch, J. J. Cazzulo, and S. Krishna. 2003. The trypanosomiasis. *Lancet* **362**:1469–1480.
- Barry, J. D. 1979. Capping of variable antigen on *Trypanosoma brucei*, and its immunological and biological significance. *J. Cell Sci.* **37**:287–302.
- Barry, J. D., S. L. Hajduk, K. Vickerman, and D. Le Ray. 1979. Detection of multiple variable antigen types in metacyclic populations of *Trypanosoma brucei*. *Trans. R. Soc. Trop. Med. Hyg.* **73**:205–208.
- Barry, J. D., and R. McCulloch. 2001. Antigenic variation in trypanosomes: enhanced phenotypic variation in a eukaryotic parasite. *Adv. Parasitol.* **49**:1–70.
- Bass, K. E., and C. C. Wang. 1991. The *in vitro* differentiation of pleomorphic *Trypanosoma brucei* from bloodstream into procyclic form requires neither intermediary nor short-stumpy stage. *Mol. Biochem. Parasitol.* **44**:261–270.
- Brun, R., and L. Jenni. 1987. Human serum resistance of metacyclic forms of *Trypanosoma brucei brucei*, *T. brucei rhodesiense* and *T. brucei gambiense*. *Parasitol. Res.* **73**:218–223.
- Brun, R., and M. Schonenberger. 1979. Cultivation and *in vitro* cloning or procyclic culture forms of *Trypanosoma brucei* in a semi-defined medium. *Acta Trop.* **36**:289–292.
- Buxbaum, L. U., K. G. Milne, K. A. Werbovetz, and P. T. Englund. 1996. Myristate exchange on the *Trypanosoma brucei* variant surface glycoprotein. *Proc. Natl. Acad. Sci. USA* **93**:1178–1183.
- Engstler, M., J. D. Bangs, and M. C. Field. 2007. Intracellular transport systems in trypanosomes: function, evolution and virulence, p. 281–317. In J. D. Barry, J. Mottram, R. McCulloch, and A. Acosta-Serrano (ed.), *Trypanosomes—after the genome*. Horizon Press, Norwich, United Kingdom.
- Field, H., M. Farjah, A. Pal, K. Gull, and M. C. Field. 1998. Complexity of trypanosomatid endocytosis pathways revealed by Rab4 and Rab5 isoforms in *Trypanosoma brucei*. *J. Biol. Chem.* **273**:32102–32110.
- Field, M. C., C. L. Allen, V. Dhir, D. Goulding, B. S. Hall, G. W. Morgan, P. Veazey, and M. Engstler. 2004. New approaches to the microscopic imaging of *Trypanosoma brucei*. *Microsc. Microanal.* **10**:621–636.
- Field, M. C., and M. Carrington. 2004. Intracellular membrane transport systems in *Trypanosoma brucei*. *Traffic* **5**:905–913.
- Gruszynski, A. E., F. J. van Deursen, M. C. Albareda, A. Best, K. Chaudhary, L. J. Cliffe, L. del Rio, J. D. Dunn, L. Ellis, K. J. Evans, J. M. Figueiredo, N. A. Malmquist, Y. Omosun, J. B. Palenchar, S. Prickett, G. A. Punkosdy, G. van Dooren, Q. Wang, A. K. Menon, K. R. Matthews, and J. D. Bangs. 2006. Regulation of surface coat exchange by differentiating African trypanosomes. *Mol. Biochem. Parasitol.* **147**:211–223.
- Hall, B., C. L. Allen, D. Goulding, and M. C. Field. 2004. Both of the Rab5 subfamily small GTPases of *Trypanosoma brucei* are essential and required for endocytosis. *Mol. Biochem. Parasitol.* **138**:67–77.
- Hall, B. S., A. Pal, D. Goulding, A. Acosta-Serrano, and M. C. Field. 2005. *Trypanosoma brucei*: TbRAB4 regulates membrane recycling and expression of surface proteins in procyclic forms. *Exp. Parasitol.* **111**:160–171.
- Hall, B. S., A. Pal, D. Goulding, and M. C. Field. 2004. Rab4 is an essential regulator of lysosomal trafficking in trypanosomes. *J. Biol. Chem.* **279**:45047–45056.
- Hall, B. S., E. Smith, W. Langer, L. A. Jacobs, D. Goulding, and M. C. Field. 2005. Developmental variation in Rab11-dependent trafficking in *Trypanosoma brucei*. *Eukaryot. Cell* **4**:971–980.
- Hendriks, E., F. J. van Deursen, J. Wilson, M. Sarkar, M. Timms, and K. R. Matthews. 2000. Life-cycle differentiation in *Trypanosoma brucei*: molecules and mutants. *Biochem. Soc. Trans.* **28**:531–536.
- Hertz-Fowler, C., K. Ersfeld, and K. Gull. 2001. CAP5.5, a life-cycle-regulated, cytoskeleton-associated protein is a member of a novel family of calpain-related proteins in *Trypanosoma brucei*. *Mol. Biochem. Parasitol.* **116**:25–34.
- Hirumi, H., and K. Hirumi. 1994. Axenic culture of African trypanosome bloodstream forms. *Parasitol. Today* **10**:80–84.
- Jeffries, T. R., G. W. Morgan, and M. C. Field. 2001. A developmentally regulated rab11 homologue in *Trypanosoma brucei* is involved in recycling processes. *J. Cell Sci.* **114**:2617–2626.
- Kelley, R. J., D. L. Alexander, C. Cowan, A. E. Balber, and J. D. Bangs. 1999. Molecular cloning of p67, a lysosomal membrane glycoprotein from *Trypanosoma brucei*. *Mol. Biochem. Parasitol.* **98**:17–28.
- Laemmli, U. K. 1970. Cleavage of structural proteins during the assembly of the head of bacteriophage T4. *Nature* **227**:680–685.
- Lanham, S. M., and D. G. Godfrey. 1970. Isolation of salivarian trypanosomes from man and other mammals using DEAE-cellulose. *Exp. Parasitol.* **28**:521–534.
- Matthews, K. R., and K. Gull. 1994. Evidence for an interplay between cell cycle progression and the initiation of differentiation between life cycle forms of African trypanosomes. *J. Cell Biol.* **125**:1147–1156.
- Morgan, G. W., C. L. Allen, T. R. Jeffries, M. Hollinshead, and M. C. Field. 2001. Developmental and morphological regulation of clathrin-mediated endocytosis in *Trypanosoma brucei*. *J. Cell Sci.* **114**:2605–2615.
- O'Beirne, C., C. M. Lowry, and H. P. Voorheis. 1998. Both IgM and IgG anti-VSG antibodies initiate a cycle of aggregation-disaggregation of bloodstream forms of *Trypanosoma brucei* without damage to the parasite. *Mol. Biochem. Parasitol.* **91**:165–193.
- Pal, A., B. S. Hall, and M. C. Field. 2002. Evidence for a non-LDL-mediated entry route for the trypanocidal drug suramin in *Trypanosoma brucei*. *Mol. Biochem. Parasitol.* **122**:217–221.
- Pal, A., B. S. Hall, T. R. Jeffries, and M. C. Field. 2003. Rab5 and Rab11 mediate transferrin and anti-variant surface glycoprotein antibody recycling in *Trypanosoma brucei*. *Biochem. J.* **374**:443–451.
- Pal, A., B. S. Hall, D. N. Nesbeth, H. I. Field, and M. C. Field. 2002. Differential endocytic functions of *Trypanosoma brucei* Rab5 isoforms reveal a glycosylphosphatidylinositol-specific endosomal pathway. *J. Biol. Chem.* **277**:9529–9539.
- Pays, E., B. Vanhullebeke, L. Vanhamme, F. Paturiaux-Hanocq, D. P. Nolan, and D. Perez-Morga. 2006. The trypanolytic factor of human serum. *Nat. Rev. Microbiol.* **4**:477–486.
- Peacock, L., V. Ferris, M. Bailey, and W. Gibson. 2006. Multiple effects of the lectin-inhibitory sugars D-glucosamine and N-acetyl-glucosamine on tsetse-trypanosome interactions. *Parasitology* **132**:651–658.
- Reuner, B., E. Vassella, B. Yutzy, and M. Boshart. 1997. Cell density triggers slender to stumpy differentiation of *Trypanosoma brucei* bloodstream forms in culture. *Mol. Biochem. Parasitol.* **90**:269–280.
- Richardson, J. P., R. P. Beecroft, D. L. Tolson, M. K. Liu, and T. W. Pearson. 1988. Procyclin: an unusual immunodominant glycoprotein surface antigen from the procyclic stage of African trypanosomes. *Mol. Biochem. Parasitol.* **31**:203–216.
- Roditi, I., M. Carrington, and M. Turner. 1987. Expression of a polypeptide containing a dipeptide repeat is confined to the insect stage of *Trypanosoma brucei*. *Nature* **325**:272–274.
- Roditi, I., and T. W. Pearson. 1990. The procyclin coat of African trypanosomes (or the not-so-naked trypanosome). *Parasitol. Today* **6**:79–82.
- Roditi, I., H. Schwarz, T. W. Pearson, R. P. Beecroft, M. K. Liu, J. P. Richardson, H. J. Buhning, J. Pleiss, R. Bulow, R. O. Williams, et al. 1989. Procyclin gene expression and loss of the variant surface glycoprotein during differentiation of *Trypanosoma brucei*. *J. Cell Biol.* **108**:737–746.
- Sharma, R., L. Peacock, E. Gluenz, K. Gull, W. Gibson, and M. Carrington. 2007. Asymmetric cell division as a route to reduction in cell length and change in cell morphology in trypanosomes. *Protist*. doi:10.1016/j.protis.2007.07.004.
- Shedden, K., S. Vaughan, J. Minchin, K. Hughes, K. Gull, and G. Rudenko. 2005. Variant surface glycoprotein RNA interference triggers a precytokinesis cell cycle arrest in African trypanosomes. *Proc. Natl. Acad. Sci. USA* **102**:8716–8721.
- Steiger, R. 1973. On the ultrastructure of *Trypanosoma (Trypanozoon) brucei* in the course of its life cycle and some related aspects. *Acta Trop.* **30**:64–168.
- Tetley, L., and K. Vickerman. 1985. Differentiation in *Trypanosoma brucei*: host-parasite cell junctions and their persistence during acquisition of the variable antigen coat. *J. Cell Sci.* **74**:1–19.
- Turner, C. M., J. D. Barry, and K. Vickerman. 1986. Independent expression of the metacyclic and bloodstream variable antigen repertoires of *Trypanosoma brucei rhodesiense*. *Parasitology* **92**(Pt. 1):67–73.
- Urwiler, S., E. Studer, C. K. Renggli, and I. Roditi. 2007. A family of stage-specific alanine-rich proteins on the surface of epimastigote forms of *Trypanosoma brucei*. *Mol. Microbiol.* **63**:218–228.
- Van Den Abbeele, J., Y. Claes, D. van Bockstaele, D. Le Ray, and M. Coosemans. 1999. *Trypanosoma brucei* spp. development in the tsetse fly: characterization of the post-mesocyclic stages in the foregut and proboscis. *Parasitology* **118**(Pt. 5):469–478.
- Vickerman, K. 1985. Developmental cycles and biology of pathogenic trypanosomes. *Br. Med. Bull.* **41**:105–114.
- Vickerman, K., L. Tetley, K. A. Hendry, and C. M. Turner. 1988. Biology of African trypanosomes in the tsetse fly. *Biol. Cell* **64**:109–119.
- Ziegelbauer, K., M. Quinten, H. Schwarz, T. W. Pearson, and P. Overath. 1990. Synchronous differentiation of *Trypanosoma brucei* from bloodstream to procyclic forms *in vitro*. *Eur. J. Biochem.* **192**:373–378.