



THE UNIVERSITY *of* EDINBURGH

Edinburgh Research Explorer

Intercellular adhesion molecule-1 expression in human endometrium

implications for long term progestin only contraception

Citation for published version:

Schatz, F, Krikun, G, Baergen, RN, Critchley, HOD, Kuczynski, E & Lockwood, CJ 2006, 'Intercellular adhesion molecule-1 expression in human endometrium: implications for long term progestin only contraception', *Reproductive Biology and Endocrinology*, vol. 4, pp. 2. <https://doi.org/10.1186/1477-7827-4-2>

Digital Object Identifier (DOI):

[10.1186/1477-7827-4-2](https://doi.org/10.1186/1477-7827-4-2)

Link:

[Link to publication record in Edinburgh Research Explorer](#)

Document Version:

Publisher's PDF, also known as Version of record

Published In:

Reproductive Biology and Endocrinology

Publisher Rights Statement:

© 2006 Schatz et al; licensee BioMed Central Ltd.

This is an Open Access article distributed under the terms of the Creative Commons Attribution License (<http://creativecommons.org/licenses/by/2.0>), which permits unrestricted use, distribution, and reproduction in any medium, provided the original work is properly cited.

General rights

Copyright for the publications made accessible via the Edinburgh Research Explorer is retained by the author(s) and / or other copyright owners and it is a condition of accessing these publications that users recognise and abide by the legal requirements associated with these rights.

Take down policy

The University of Edinburgh has made every reasonable effort to ensure that Edinburgh Research Explorer content complies with UK legislation. If you believe that the public display of this file breaches copyright please contact openaccess@ed.ac.uk providing details, and we will remove access to the work immediately and investigate your claim.



Research

Open Access

Intercellular adhesion molecule-1 expression in human endometrium: implications for long term progestin only contraception

Frederick Schatz¹, Graciela Krikun¹, Rebecca N Baergen², Hilary OD Critchley³, Edward Kuczynski¹ and Charles J Lockwood^{*1}

Address: ¹Department of Obstetrics, Gynecology and Reproductive Sciences, Yale University School of Medicine, New Haven CT, USA,

²Department of Pathology, Weil-Cornell Medical Center, New York NY, USA and ³Centre for Reproductive Biology, University of Edinburgh, UK

Email: Frederick Schatz - frederick.schatz@yale.edu; Graciela Krikun - graciela.krikun@yale.edu; Rebecca N Baergen - rbaergen@med.cornell.edu; Hilary OD Critchley - hilary.critchley@ed.ac.uk; Edward Kuczynski - edward.kuczynski@yale.edu; Charles J Lockwood* - chairobgyn@yale.edu

* Corresponding author

Published: 30 January 2006

Received: 28 June 2005

Reproductive Biology and Endocrinology 2006, 4:2 doi:10.1186/1477-7827-4-2

Accepted: 30 January 2006

This article is available from: <http://www.rbej.com/content/4/1/2>

© 2006 Schatz et al; licensee BioMed Central Ltd.

This is an Open Access article distributed under the terms of the Creative Commons Attribution License (<http://creativecommons.org/licenses/by/2.0>), which permits unrestricted use, distribution, and reproduction in any medium, provided the original work is properly cited.

Abstract

Background: Neutrophils infiltrate the endometrium pre-menstrually and after long-term progestin only-contraceptive (LTPOC) treatment. Trafficking of neutrophils involves endothelial cell-expressed intercellular adhesion molecule (ICAM-1). Previous studies observed that ICAM-1 was immunolocalized to the endothelium of endometrial specimens across the menstrual cycle, but disagreed as to whether extra-endothelial cell types express ICAM-1 and whether ICAM-1 expression varies across the menstrual cycle.

Methods: Endometrial biopsies were obtained from women across the menstrual cycle and from those on LTPOC treatment (either Mirena or Norplant). The biopsies were formalin-fixed and paraffin-embedded with subsequent immunohistochemical staining for ICAM-1.

Results: The current study found prominent ICAM-1 staining in the endometrial endothelium that was of equivalent intensity in different blood vessel types irrespective of the steroidal or inflammatory endometrial milieu across the menstrual cycle and during LTPOC therapy. Unlike the endothelial cells, the glands were negative and the stromal cells were weakly positive for ICAM immunostaining.

Conclusion: The results of the current study suggest that altered expression of ICAM-1 by endothelial cells does not account for the influx of neutrophils into the premenstrual and LTPOC-derived endometrium. Such neutrophil infiltration may depend on altered expression of neutrophil chemoattractants.

Background

The premenstrual human endometrium displays increased prostaglandin-generating capacity, elevated levels of inflammatory cytokines [1,2] and a leukocyte infil-

trate that comprises nearly one-half of the cell population [3-5]. Among endometrial leukocyte subtypes, neutrophils are virtually absent until the mid-luteal phase, but comprise a significant portion of the leukocytes in the

menstrual phase. During long-term progestin-only contraceptive (LTPOC) administration, the endometrium also experiences enhanced prostaglandin-generating capacity and increased inflammatory cytokine levels [6,7]. Administration of Norplant, which releases levonorgestrel (LNG) from subdermal rods, and Mirena, which releases LNG from an intrauterine system, leads to endometrial infiltration of matrix metalloproteinase-9 (MMP-9) positive neutrophils [8], and macrophages [9], respectively.

Endothelial cell-expressed cellular adhesion molecules mediate leukocyte trafficking [10]. In this regard, particular attention has been directed at the physiological and pathological roles played by intercellular adhesion molecule (ICAM-1), a 76-114-kDa surface glycoprotein that has five extracellular immunoglobulin-like domains [11-14]. Transmigration of leukocytes involves high-affinity binding of LFA-1 or Mac-1 on their surface to ICAM-1 expressed on the endothelium [10]. ICAM-1 deficient mice experience numerous inflammatory response abnormalities including impaired neutrophil trafficking [15,16]. Although ICAM-1 has been immunolocalized to the endothelium of various blood vessel types in specimens of cycling endometrium, there are conflicting reports as to whether extra-endothelial cell types also express ICAM-1, and whether ICAM-1 expression varies across the menstrual cycle [17-19]. In view of this lack of consensus, the current study reassessed immunohistochemical (IHC) staining for ICAM-1 in endometrial biopsies across the menstrual cycle, and extended the use of IHC staining of ICAM-1 to include endometrial tissues exposed to subdermal (Norplant) and intra-uterine (Mirena, Schering) exogenous progestogens. Both LTPOC types provide safe and effective contraception for several years. Norplant is particularly well suited for use in underdeveloped countries where access to trained medical personnel is limited. They are discontinued primarily because of inflammation-associated abnormal uterine bleeding (AUB) as a source of personal annoyance and discomfort as well as cultural and religious taboo [20,21]. The levonorgestrel-releasing intra-uterine system (LNG-IUS, Mirena) is now increasingly used as an effective contraceptive and for its associated health benefits, including reduction in menstrual blood loss [22].

Prior to menstruation and during progestin-only contraception (Norplant, Mirena), secretion of MMPs by endometrial leukocytes as well as cytokines that can act as autocrine/paracrine modulators of MMP expression [5], are thought to enhance degradation of the vascular support structure leading to stromal collapse and bleeding [23-26]. The current study sought to determine whether altered expression of ICAM-1 could account for infiltration of neutrophils into the menstrual and LTPOC-derived endometrium.

Methods

Tissues

After receiving written informed consent and approval from the Institutional Research Board (IRB) of New York University Medical Center and Bellevue Hospital, specimens of endometrium were obtained across the menstrual cycle (four each from the follicular and luteal phases and five from the menstrual phase) from hysterectomies for benign conditions (e.g. myomas without abnormal uterine bleeding), and histologically dated by the criteria of Noyes et al [27]. For studies on LTPOC-derived endometrium, institutional ethical review and approval was obtained from the New York University IRB and the Lothian Research Ethical Committee, Scotland and written informed consent was obtained for biopsy collection.

The subjects had regular menstrual cycles and had not used hormonal or intrauterine contraception in the six months prior to insertion of Norplant or Mirena. Patients did not exhibit symptoms characteristic of endometriosis such as pelvic pain, dysmenorrhea, dysparunia, or infertility. The only way to confirm a diagnosis of endometriosis is through exploratory surgery. Such surgery would be prompted by symptoms that would have ruled out the use of those patients for our study. For the cycling endometrium patients were pre-menopausal between 32 and 43 years of age who were not receiving any hormonal treatments. For the LTPOC endometrium patients were premenopausal, between 28 and 45 years of age, had regular menstrual cycles and had not used any hormonal or intrauterine contraception in the six months prior to receiving the LTPOC treatment.

Norplant specimens

Prior to insertion of Norplant biopsies were collected from four women (two in the follicular and two in the luteal phase) by Pipelle suction curette (Laboratoire CCD, Paris, France). Only patients who experienced bleeding while on the Norplant treatment were used. Biopsies were collected using an operative hysteroscope connected to a video camera to facilitate separate sampling of bleeding and non-bleeding sites as previously described [25]. These samples were taken after 3 and 12 months post Norplant insertion.

Mirena specimens

Endometrial biopsies were also obtained from four women (two in the follicular and two in the luteal phase) prior to and at 1, 3, 6, and 12 months after intrauterine insertion of the LNG-intrauterine system by Pipelle suction biopsy.

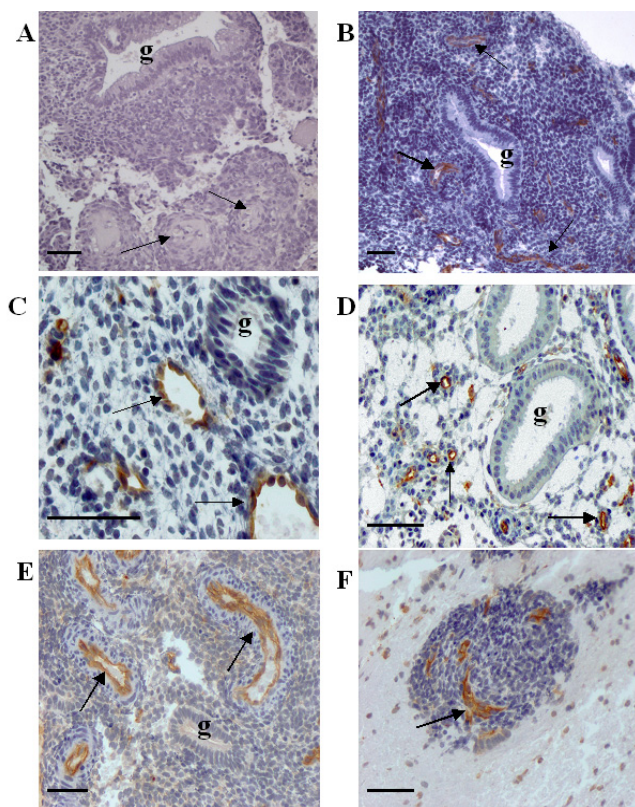


Figure 1
Immunostaining for ICAM-1 and CD 31 in human endometrium during the menstrual cycle. Negative control for menstrual endometrium (A). Prominent ICAM-1 staining is evident in the endothelium in endometrial specimens from the follicular phase (C), luteal phase (D), and menstrual phase (E, F). Similar endothelial cell staining intensity and specificity for CD 31 is seen in the menstrual specimen shown in (B). The prominent structure in the menstrual specimen shown in (F) is a "stromal ball," which results from degenerative changes of the stroma. Note the compressed blood vessels displaying prominent immunostaining for ICAM-1, whereas the surrounding stromal cells were only weakly positive. Arrow = blood vessel; g = gland. Bar = 50 μ m.

Immunohistochemistry (IHC)

Specimens of endometrium obtained across the menstrual cycle as well as from control, and levonorgestrel treated (Norplant, Mirena) subjects were fixed in 4% paraformaldehyde and embedded in paraffin. Four μ m sections (4 μ m) were deparaffinized, rehydrated and washed in Tris-buffered saline [TBS: 20 mmol/l Tris-HCl, 150 mmol/l NaCl (pH 7.6)], which was used for all washes and for dilution of the antibody. Antigen retrieval was carried-out by incubating sections in sodium citrate buffer (10 mM, pH 6.0) in a microwave oven at 750 Watts for 5 minutes. The sections were then rinsed in 3% hydrogen peroxide to block endogenous peroxidase and incubated

for 1 hour at room temperature with either of the following primary antibodies: a goat polyclonal ICAM-1 (CD54) antibody from R&D Systems (R&D Systems, Inc., Minneapolis, MN) or a monoclonal antibody against the Platelet Adhesion Molecule (PECAM) (CD31) from Dako (DakoCytomation California, Inc., Carpinteria, CA). Staining was visualized using the avidin-biotin peroxidase complex (Vectastain ABC kit, Vector Laboratories, Burlingame, CA) and the 3,3'-diaminobenzidine tetrahydrochloride (Sigma-Aldrich, St. Louis, MI) chromogen substrate. Light hematoxylin stain was used for nuclear counterstaining. Negative controls for each tissue section consisted of substituting the corresponding pre-immune serum for the primary antibody.

Assessment of immunohistochemical (IHC) staining and statistical analysis

Intensity of ICAM-1 staining was evaluated using a semi-quantitative 4-point rating method with the following scoring system: 0, absence of staining; 1, light staining; 2 moderate staining; and 3, strong staining. Each of these possible scores was established in advance of rating the fields via reference to external stained specimens unrelated to this study. In order to determine inter-rater reliability of this scale, two independent judges scored a series of 35 separate fields on slides from 4 separate patient samples. The degree of concordance was then assessed by use of Cohen's kappa statistic, which yielded a value of 0.67, indicating a high degree of agreement between the judges.

Non-parametric statistical analysis was performed by the Mann-Whitney Rank Sum Test with $p < 0.05$ considered significant.

Results

Figure 1 (C-F) displays IHC staining for ICAM-1 in endometrial specimens obtained across the menstrual cycle. As expected, there was a lack of staining in the negative control (A). The endothelium of all specimens examined stained prominently, displaying an intensity that appeared to be independent of hormonal or inflammatory state. Thus, staining intensity did not vary significantly among specimens obtained from the estrogen-regulated follicular phase (C), the progestin-dominated luteal phase (D), or from the pro-inflammatory milieu characteristic of the ovarian steroid withdrawal-initiated menstrual phase (E-F). In both intensity and specificity for the endothelium, immunostaining for ICAM-1 was similar to that of CD31 (shown in Figure 1B), a documented endothelial cell marker whose expression was demonstrated by Tawia [18] to be essentially unchanged across the menstrual cycle. The "stromal ball" displayed by the specimen of menstrual endometrium in (F) indicates that in contrast with the intense IHC staining for ICAM-1 exhibited by the endothelium of the compressed vessels,

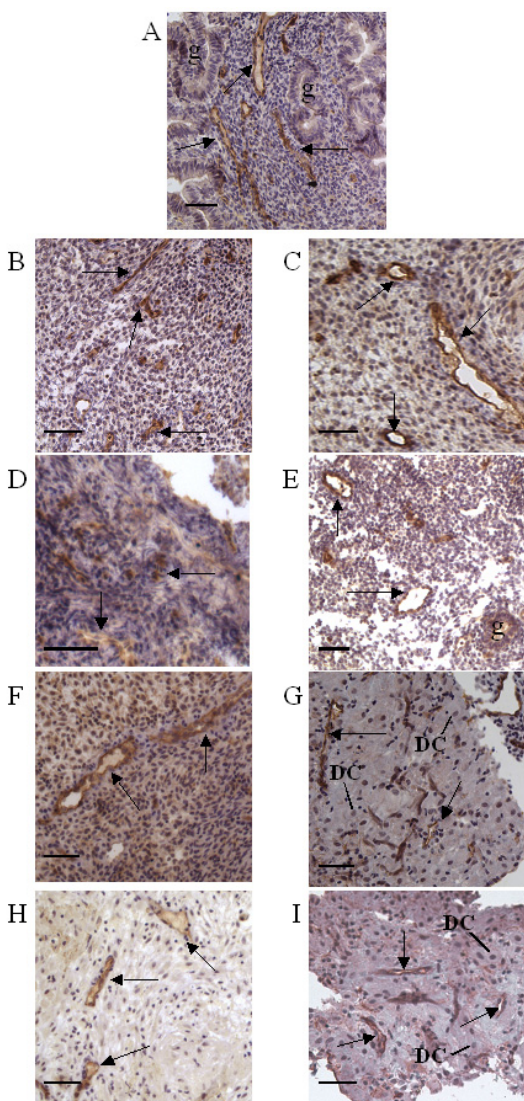


Figure 2
Immunostaining for ICAM-1 in human endometrium during long term only contraceptive (LTPOC) administration. IHC staining in the endothelium was prominent and specific for the endothelium in all endometrial specimens examined. Samples obtained from women using Norplant (subdermal LNG) (B-E)-: (B) 3 months post-Norplant non-bleeding site; (C) 3 months post-Norplant, bleeding site; (D) 12 months post-Norplant, non-bleeding site; and (E) 12 months post Norplant, bleeding site. Similar results were seen in endometrial specimens from women using Mirena (intrauterine LNG) (F-I)-: (F) 3 months post-Mirena, non-bleeding (F); 3 months post-Mirena, bleeding; (G) 12 months post-Mirena, non-bleeding; and (I) 12 months post-Mirena, bleeding. Note that the stromal cells exhibit a much greater decidualization reaction following intrauterine administration of LNG (F-I) than after subdermal LNG (B-E). Arrow = blood vessel; g = gland; DC = decidualized stromal cell. Bar = 50 μ m.

the stromal cells demonstrate at most only weakly positive immunoreactivity. This observation contradicts a report that stromal cells of cycling human endometrium display significant ICAM-1 IHC staining whose intensity peaks during the menstrual phase [18].

Figure 2 displays IHC staining for ICAM-1 in endometrial specimens obtained after administration of the LTPOCs, Norplant (B-E) and Mirena (F-I). As observed in Figure 1 for endometria obtained across the menstrual cycle, Figure 2 demonstrates that immunoreactive ICAM-1 was also localized specifically to the endothelium of LTPOC-derived endometrium with staining intensity that was equivalent among various vessel types and independent of both steroidal and inflammatory state. Thus, consistent with direct delivery of LNG to the uterus with Mirena contraception the progestin-induced decidualization reaction in these specimens (F-I) is much greater than in Norplant-derived specimens (B-E). Moreover, despite the documented increase in pro-inflammatory cytokines [6,7] and leukocyte infiltration [8,9] during LTPOC-induced abnormal uterine bleeding, no differences in endothelial cell IHC staining for ICAM-1 were evident whether the endometrium exhibited abnormal uterine bleeding or gave no indication of bleeding. Specifically, with Norplant administration this comparison was between bleeding (C, E) and non-bleeding sites (B, D) of the same endometrium. With Mirena administration comparisons are between patients experiencing abnormal uterine bleeding (G, I) and those who were not bleeding (F, H). For both figures, our rating of staining intensity was characterized by good inter-rater reliability, with a Cohen's kappa value of 0.67 for observations made by two independent observers (See Methods for details).

Discussion

The current study found that human endometrial endothelial cells displayed prominent IHC staining for ICAM-1 in specimens obtained from the follicular, luteal and menstrual phases, and after administration of the LTPOCs, Norplant (subdermal LNG) and Mirena (intrauterine LNG) and that this staining was of equivalent intensity in all vessels examined. By contrast, the glands exhibited virtually no immunostaining and the stromal cells only weak immunoreactivity. Although IHC staining for ICAM-1 was previously demonstrated in the endometrial endothelium of specimens obtained across the menstrual cycle [17-19], two of the reports found significant ICAM-1 staining in the stromal cells [18,19], with one study noting that ICAM-1 levels in both stromal cells and endothelial cells were elevated in menstrual endometrium compared with specimens examined earlier in the menstrual cycle [18].

Table 1: Previously reported ICAM-1 immunostaining in non-pregnant and gestational endometrium. FT: first trimester; FF-PE: formalin-fixed, paraffin-embedded; PE: pre-eclampsia, IUGR: intrauterine growth retardation

Reference	Tissue type	Tissue Preparation	Endothelial Cell ICAM-1 staining	Non-endothelial Cell ICAM-1 staining
17	Cycling endometrium	Frozen (formalin-fix)	Strong, constitutive	Uniform staining of glands, stroma, and epithelium; strong lymphoid staining
18	Cycling endometrium	Frozen (formalin-fix)	Strong but variable among vessel types with peak at menstrual	Glandular and luminal epithelium negative, stroma weak in proliferative/secretory phases but strong at menstrual
19	Cycling endometrium	Frozen (acetone-fix) and FF-PE	Strong throughout entire cycle	Glandular and luminal epithelium variable, stroma stained throughout cycle with increase expression in menstrual; widespread lymphoid staining
31	FT Decidua	Frozen (acetone-fix)	Strong in all vessel types	Glands negative, stroma weak, moderate staining of lymphocytes
32	FT Decidua, placenta	Frozen (acetone-fix)	Strong in all vessel types	Stroma negative, strong lymphocyte staining, strong staining of decidua parietalis,
33	FT decidua	Frozen (acetone-fix)	Strong in all vessel types	Glands negative, some stroma positive
34	Decidua, placental bed	Frozen (acetone-fix)	Strong, unchanged in normal vs. PE, IUGR, or PE+IUGR	Weak scattered stromal cell staining
35	Decidua, placenta	Frozen (acetone-fix)	Strong, unchanged in normal vs. PE	Villous trophoblasts negative, <10% interstitial trophoblasts stained
36	FT decidua	FF-PE	Strong in all vessel types, same in normal vs. inflammation; constitutive	Glands negative, stroma weak

The demonstration in the current study that ICAM-1 levels are equivalent in the endometrial endothelium of specimens from the E₂-dominated follicular phase, the progesterone-exposed luteal phase, and the steroid-withdrawal-initiated menstrual phase suggests that ICAM-1 expression is not under direct ovarian steroid regulation. This conclusion was supported by the ICAM-1 immunostaining results obtained in endometrial biopsies during use of subdermal and intrauterine LNG (Norplant and Mirena respectively) contraception. That both LTPOCs produce a hyperprogestational endometrial milieu is suggested by the observation of significantly high endometrial levels of the progesterone receptor (PR) isoforms PR_A and PR_B after administration of Norplant [24] as well as the injectable LTPOC, Provera [23], whereas PR_A appears to mediate the long-term effects of LNG in the endometrium during intrauterine LNG contraception [6]. Endometrial levels of LNG that are 1000 times greater with intrauterine delivery (Mirena) than with subdermal LNG administration (Norplant) [28]. However, the current study observed no difference in endometrial endothelial ICAM-1 immunostaining regardless of which LNG formulation was evaluated.

Evidence presented in the current study also argues against a role for the local inflammatory milieu in regulating endothelial cell expressed ICAM-1. Thus, equivalent immunostaining intensity was observed when follicular

and luteal phase endometria were compared with menstrual, Norplant, and Mirena-derived endometria, which undergo a marked leukocyte infiltration [3-5,8,9] and exhibit other local pro-inflammatory changes such as a high prostaglandin-generating capacity and elevated interleukin-8 (IL-8) levels [1,2,6,7].

ICAM-1 is both constitutively expressed and transcriptionally regulated on the surface of several cell types [29]. Consistent with the latter, the ICAM-1 gene promoter contains several cis-acting elements that predict responsiveness to pro-inflammatory cytokines and reactive oxygen species (ROS). Cooperativity between transcription factors C/EBP and NfκB mediate tumor necrosis factor alpha (TNF-α) and interleukin 1beta (IL-1β) responses. Actions of H₂O₂ are mediated by antioxidant response elements (ARE), which bind transcription factors AP-1 and Ets [29]. As expected, TNF-α, whose pro-inflammatory activity requires ROS formation, induces ICAM-1 expression in endothelial and epithelial cells and H₂O₂ induces ICAM-1 expression in endothelial cells. However, H₂O₂ does not affect ICAM-1 expression in epithelial cells [30].

In vivo studies have generally relied on IHC to localize and assess ICAM-1 levels. Table 1 summarizes the results of nine previous reports, three in nonpregnant endometrium [17-19] and six in pregnant endometrium (decidua) [31-36]. The majority of these agree with the

current results, by observing intense ICAM-1 immunostaining in a variety of blood vessel types that appears to be constitutive even in a pro-inflammatory milieu. Recently, in first trimester from cases of hemorrhagic, acutely inflamed, regressing deciduas, we found that endothelial cell ICAM-1 staining intensity was unaffected by the proximity of blood vessels to cytokine-expressing neutrophils [36]. Moreover, despite reports that preeclamptic decidua display a marked macrophage infiltrate and high levels of TNF- α , [37,38] other reports [34,35] found that endothelial cell ICAM-1 expression was similar in decidua from preeclamptic or gestationally age-matched placentas. These studies agree with observations made in the current study for nonpregnant endometrium. It found equivalent ICAM-1 immunostaining intensity in the endothelium of follicular and luteal phase endometria compared with menstrual, Norplant and Mirena-derived endometria, which exhibit such local pro-inflammatory changes as a marked leukocyte infiltrate [3-5,8,9], high prostaglandin-generating capacity and elevated interleukin-8 (IL-8) levels [1,2,6,7].

Regulation of neutrophil migration into inflammatory sites reflects interactions between the IL-8 chemokine and the ICAM-1 adhesion molecule. The former establishes a chemotactic gradient that promotes neutrophil trafficking from the circulation towards the endothelium [39]. This enables the latter to mediate neutrophil rolling and adhesion prior to transendothelial migration [40]. Neutrophils are rich source of gelatinase B (MMP-9) [41], which degrades basement membrane associated collagens IV and V [42]. Moreover, neutrophil-derived MMP-9 cleaves IL-8 to a truncated form [IL-8(7-77)] with 10–30-fold greater potency in promoting neutrophil activation and chemotaxis [41]. The onset of AUB during LTPOC administration stems from fragile, abnormally distended vessels with impaired basement membranes" [43,44]. Administration of LTPOCs produces local hypoxia stemming from reduced uterine vasomotion (45), and increases stromal cell expression of tissue factor, which can generate thrombin at local sites of AUB [46]. The demonstration in the current study that ICAM-1 is constitutively expressed by the endometrial endothelium highlights the important role that altered IL-8 expression plays in regulating neutrophil trafficking into the endometrium. Toward that end, we recently demonstrated that IL-8 expression is enhanced by hypoxia and thrombin in stromal cells derived from pre-decidualized human endometrium [47].

Conclusion

In the context of our current observations, constitutive endothelial ICAM-1 expression alone cannot account for the marked neutrophil infiltration that characterizes both premenstrual human endometrium as well as the endometrium resulting from LTPOC therapy.

Authors' contributions

FS designed the study and drafted the manuscript. GK conducted immunohistochemical procedures. RNB assessed immunohistochemical staining. HC performed clinical assessment and collection of specimens related to LTPOC treatment. EK performed the statistical analyses and critically reviewed the manuscript. CJL participated in the conception of the study and critically reviewed the manuscript. All authors read and approved the final manuscript.

Acknowledgements

This work was supported by a grant from the National Institutes of Health 5 ROI HD033937-06 (CJL).

References

- Critchley HO, Jones RL, Lea RG, Drudy TA, Kelly RW, Williams AR, Baird DT: **Role of inflammatory mediators in human endometrium during progesterone withdrawal and early pregnancy.** *J Clin Endocrinol Metab* 1999, **84(1)**:240-248.
- Baird DT, Cameron ST, Critchley HOD, Drudy TA, Howe A, Jones RL, Lea RG, Kelly RW: **Prostaglandins and menstruation.** *Eur J Obstet Gynecol Rep Biol* 1996, **7**:15-17.
- Starkey PM, Clover LM, Rees MCP: **Variation during the menstrual cycle of immune cell populations in human endometrium.** *Eur J Obstet Gynecol Reprod Biol* 1991, **39**:203-207.
- Bulmer JN, Morrison L, Longfellow M, Ritson A, Pace D: **Granulated lymphocytes in human endometrium: histochemical and immunohistochemical studies.** *Hum Repro* 1991, **6**:791-798.
- Salamonsen LA, Wooley DE: **Menstruation: induction by matrix metalloproteinases and inflammatory cells.** *J of Repro Immunol* 1999, **44**:1-27.
- Critchley HOD, Wang H, Kelly RW, Gebbie AE, Glasier AF: **Progesterin receptor isoforms and prostaglandin dehydrogenase in the endometrium of women using a levonorgestrel-releasing intra-uterine system.** *Hum Reprod* 1998, **3**:1210-1217.
- Jones RL, Critchley HO: **Morphological and functional changes in human endometrium following intrauterine levonorgestrel delivery.** *Hum Reprod* 2000, **15(Suppl 3)**:162-172.
- Vincent AJ, Malakooti N, Zhang J, Rogers PA, Affandi B, Salamonsen LA: **Endometrial breakdown in women using Norplant is associated with migratory cells expressing matrix metalloproteinase-9 (gelatinase B).** *Hum Reprod* 1999, **14**:807-815.
- Critchley HO, Wang H, Jones RL, Kelly RW, Drudy TA, Gebbie AE, Buckley CH, McNeilly AS, Glasier AF: **Morphological and functional features of endometrial decidualization following long-term intrauterine levonorgestrel delivery.** *Hum Reprod* 1998, **13(5)**:1218-1224.
- Springer TA: **Traffic signals for lymphocyte recirculation and leukocyte emigration: the multistep paradigm.** *Cell* 1994, **76**:301-314.
- Wang Q, Doerschuk CM: **The signaling pathways induced by neutrophil-endothelial cell adhesion.** *Antioxid Redox Signal* 2002, **4(1)**:39-47.
- Greenwood J, Etienne-Manneville S, Adamson P, Couraud PO: **Lymphocyte migration into the central nervous system: implication of ICAM-1 signaling at the blood-brain barrier.** *Vascul Pharmacol* 2002, **38(6)**:315-322.
- Nishibori M, Takahashi HK, Mori S: **The regulation of ICAM-1 and LFA-1 interaction by autacoids and statins: a novel strategy for controlling inflammation and immune responses.** *J Pharmacol Sci* 2003, **92(1)**:7-12.
- Ren G, Dewald O, Frangogiannis NG: **Inflammatory mechanisms in myocardial infarction.** *Curr Drug Targets Inflamm Allergy* 2003, **2(3)**:242-256.
- Hayflick JS, Kilgannon P, Gallatin WM: **The intercellular adhesion molecule (ICAM) family of proteins. New members and novel functions.** *Immunol Res* 1998, **17(3)**:313-327. Review
- Sligh JS Jr, Ballantyne CM, Rich SS, Hawkins HK, Smith CW, Bradley A, Beaudet AL: **Inflammatory and immune responses are**

- impaired in mice deficient in intercellular adhesion molecule 1. *Proc Natl Acad Sci U S A* 1993, **90**(18):8529-8533.
17. Tabibzadeh SS, Poubourdis D: **Expression of leukocyte adhesion molecules in human endometrium.** *Amer J Clin Pathol* 1990, **93**:183-189.
 18. Tawia SA, Beaton LA, Rogers PAW: **Immunolocalization of the cellular adhesion molecules, intercellular adhesion molecule-1 (ICAM-1) and platelet adhesion molecule (PECAM), in human endometrium throughout the menstrual cycle.** *Hum Reprod* 1993, **8**:175-181.
 19. Thomson AJ, Greer MR, Young A, Boswell F, Telfer JF, Cameron IT, Norman JE, Campbell S: **Expression of intercellular adhesion molecules ICAM-1 and ICAM-2 in human endometrium throughout the menstrual cycle.** *Mol Hum Reprod* 1999, **5**(1):64-70.
 20. Shulman LP, Nelson AL, Darney PD: **Recent developments in hormone delivery systems.** *Am J Obstet Gynecol* 2004, **190**(4 Suppl):S39-48.
 21. McGavigan CJ, Cameron I: **The Mirena levonorgestrel system.** *Drugs Today (Barc)* 2003, **39**(12):973-984.
 22. Critchley HO: **Endometrial effects of progestogens.** *Gyn Forum* 2003, **8**:6-10.
 23. Hickey M, Simbar M, Markham R, Young L, Manconi F, Russell P, Fraser IS: **Changes in vascular basement membrane in the endometrium of Norplant users.** *Hum Reprod* 1999, **14**(3):716-721.
 24. Lockwood CJ, Runic R, Wan L, Demopoulos R, Schatz F: **The role of tissue factor in regulating endometrial hemostasis: implications for progestin-only contraception.** *Hum Reprod* 2000, **15**:144-151.
 25. Runic R, Schatz F, Wan L, Demopoulos R, Krikun G, Lockwood CJ: **Effects of norplant on endometrial tissue factor expression and blood vessel structure.** *J Clin Endocrinol Metab* 2000, **85**:3853-3859.
 26. Rogers PA: **Endometrial vasculature in Norplant users.** *Hum Reprod* 1996, **11**(Suppl 2):45-50.
 27. Noyes RW, Hertig AT, Rock J: **Dating the endometrial biopsy.** *Fertil Steril* 1950, **1**:3-25.
 28. Pekonen F, Nyman T, Lahteenmaki P, Haukkamaa M, Rutanen EM: **Intrauterine progestin induces continuous insulin-like growth factor-binding protein-1 production in the human endometrium.** *J Clin Endocrinol Metab* 1992, **75**:660-664.
 29. Roebuck KA, Finnegan A: **Regulation of intercellular adhesion molecule-1 (CD54) gene expression. (Review).** *J Leukoc Biol* 1999, **66**(6):876-888.
 30. Roebuck KA: **Oxidative stress regulation of IL-8 and ICAM-1 gene expression: differential activation and binding of the transcription factors AP-1 and NF kappa B. (Review).** *Int J Mol Med* 1999, **3**:223-230.
 31. Marzusch K, Ruck P, Geiselhart A, Handgretinger R, Dietl JA, Kaiserling E, Horny HP, Vince G, Redman CW: **Distribution of cell adhesion molecules on CD56+, CD3-, CD16- large granular lymphocytes and endothelial cells in first-trimester human decidua.** *Hum Reprod* 1993, **8**(8):1203-1208.
 32. Burrows TD, King A, Loke YW: **Expression of adhesion molecules by endovascular trophoblast and decidual endothelial cells: implications for vascular invasion during implantation.** *Placenta* 1994, **15**(1):21-33.
 33. Ruck P, Marzusch K, Kaiserling E, Horny HP, Dietl J, Geiselhart A, Handgretinger R, Redman CV: **Distribution of cell adhesion molecules in decidua of early human pregnancy. An immunohistochemical study.** *Lab Invest* 1994, **71**(1):94-101.
 34. Lyall F, Greer IA, Boswell F, Young A, Macara LM, Jeffers MD: **Expression of cell adhesion molecules in placenta from pregnancies complicated by pre-eclampsia and intrauterine growth retardation.** *Placenta* 1995, **16**(7):579-587.
 35. Jaakkola K, Jokimaa V, Kallajoki M, Jalkanen S, Ekholm E: **Pre-eclampsia does not change the adhesion molecule status in the placental bed.** *Placenta* 2000, **21**(2-3):133-141.
 36. Lockwood CJ, Paidas M, Krikun G, Koopman LA, Masch R, Kuczynski E, Kliman H, Baergen RN, Schatz F: **Inflammatory cytokine and thrombin regulation of interleukin-8 and intercellular adhesion molecule-1 expression in first trimester human decidua.** *J Clin Endocrinol Metab* 2005, **90**(8):4710-4715.
 37. Lockwood CJ, Matta P, Krikun G, Koopman LA, Masch R, Toti P, Arcuri F, Huang ST-J, Funai EF, Schatz F: **Regulation of monocyte chemoattractant protein-1 expression by tumor necrosis factor alpha and interleukin 1 beta in first trimester human decidua cells: implications for preeclampsia.** *Am J Pathol* in press.
 38. Reister F, Frank HG, Kingdom JC, Heyl W, Kaufmann P, Rath W, Huppertz B: **Macrophage-induced apoptosis limits endovascular trophoblast invasion in the uterine wall of preeclamptic women.** *Lab Invest* 2001, **81**(8):1143-1152.
 39. Springer TA: **Traffic signals for lymphocyte recirculation and leukocyte emigration: the multistep paradigm.** *Cell* 1994, **76**:301-314.
 40. Issekutz AC, Rowter D, Springer TA: **Role of ICAM-1 and ICAM-2 and alternate CD11/CD18 ligands in neutrophil transendothelial migration.** *J Leukoc Biol* 1999, **65**(1):117-126.
 41. Van den Steen PE, Proost P, Wuys A, Van Damme J, Opdenakker G: **Neutrophil gelatinase B potentiates interleukin-8 tenfold by aminoterminal processing, whereas it degrades CTAP-III, PF-4, and GRO-alpha and leaves RANTES and MCP-2 intact.** *Blood* 2000, **96**(8):2673-2681.
 42. Vu TH, Werb Z: **Gelatinase B: Structure, regulation, and function.** In *Matrix Metalloproteinases*. Edited by: Parks WC and Mecham RP. San Diego: Academic Press; 1998:115-148.
 43. Hickey M, Simbar M, Markham R, Young L, Manconi F, Russell P, Fraser IS: **Changes in vascular basement membrane in the endometrium of Norplant users.** *Hum Reprod* 1999, **14**(3):716-721.
 44. Simbar M, Manconi F, Markham R, Hickey M, Fraser IS: **A three-dimensional study of endometrial microvessels in women using the contraceptive subdermal levonorgestrel implant system, norplant.** *Micron* 2004, **35**(7):589-595.
 45. Hickey M, Carati C, Manconi F, Gannon BJ, Dwarde D, Fraser IS: **The measurement of endometrial perfusion in norplant users: a pilot study.** *Hum Reprod* 2000, **15**(5):1086-1091.
 46. Runic R, Schatz F, Wan L, Demopoulos R, Krikun G, Lockwood CJ: **Effects of norplant on endometrial tissue factor expression and blood vessel structure.** *J Clin Endocrinol Metab* 2000, **85**(10):3853-3859.
 47. Lockwood CJ, Kumar P, Krikun G, Kadner S, Dubon P, Critchley H, Schatz F: **Effects of thrombin, hypoxia, and steroids on interleukin-8 expression in decidualized human endometrial stromal cells: implications for long-term progestin-only contraceptive-induced bleeding.** *J Clin Endocrinol Metab* 2004, **89**(3):1467-1475.

Publish with **BioMed Central** and every scientist can read your work free of charge

"BioMed Central will be the most significant development for disseminating the results of biomedical research in our lifetime."

Sir Paul Nurse, Cancer Research UK

Your research papers will be:

- available free of charge to the entire biomedical community
- peer reviewed and published immediately upon acceptance
- cited in PubMed and archived on PubMed Central
- yours — you keep the copyright

Submit your manuscript here:
http://www.biomedcentral.com/info/publishing_adv.asp

