



THE UNIVERSITY *of* EDINBURGH

Edinburgh Research Explorer

## Deforestation and vectorial capacity of *Anopheles gambiae* giles mosquitoes in malaria transmission, Kenya

### Citation for published version:

Afrane, YA, Little, TJ, Lawson, BW, Githeko, AK & Yan, G 2008, 'Deforestation and vectorial capacity of *Anopheles gambiae* giles mosquitoes in malaria transmission, Kenya', *Emerging Infectious Diseases*, vol. 14, no. 10, pp. 1533-1538. <https://doi.org/10.3201/eid1410.070781>

### Digital Object Identifier (DOI):

[10.3201/eid1410.070781](https://doi.org/10.3201/eid1410.070781)

### Link:

[Link to publication record in Edinburgh Research Explorer](#)

### Document Version:

Publisher's PDF, also known as Version of record

### Published In:

Emerging Infectious Diseases

### General rights

Copyright for the publications made accessible via the Edinburgh Research Explorer is retained by the author(s) and / or other copyright owners and it is a condition of accessing these publications that users recognise and abide by the legal requirements associated with these rights.

### Take down policy

The University of Edinburgh has made every reasonable effort to ensure that Edinburgh Research Explorer content complies with UK legislation. If you believe that the public display of this file breaches copyright please contact [openaccess@ed.ac.uk](mailto:openaccess@ed.ac.uk) providing details, and we will remove access to the work immediately and investigate your claim.



---

# Deforestation and Vectorial Capacity of *Anopheles gambiae* Giles Mosquitoes in Malaria Transmission, Kenya

Yaw A. Afrane, Tom J. Little, Bernard W. Lawson, Andrew K. Githeko, and Guiyun Yan

We investigated the effects of deforestation on microclimates and sporogonic development of *Plasmodium falciparum* parasites in *Anopheles gambiae* mosquitoes in an area of the western Kenyan highland prone to malaria epidemics. *An. gambiae* mosquitoes were fed with *P. falciparum*-infected blood through membrane feeders. Fed mosquitoes were placed in houses in forested and deforested areas in a highland area (1,500 m above sea level) and monitored for parasite development. Deforested sites had higher temperatures and relative humidities, and the overall infection rate of mosquitoes was increased compared with that in forested sites. Sporozoites appeared on average 1.1 days earlier in deforested areas. Vectorial capacity was estimated to be 77.7% higher in the deforested site than in the forested site. We showed that deforestation changes microclimates, leading to more rapid sporogonic development of *P. falciparum* and to a marked increase of malaria risk in the western Kenyan highland.

Land use changes in the form of deforestation and swamp cultivation have been occurring rapidly in the western Kenyan highlands because of unprecedented human demand for forest products and land for agricultural cultivation (1,2). In the East African highlands, 2.9 million hectares of forest were cleared between 1981 and 1990, representing an 8% reduction in forest cover in 1 decade (3). As has been observed in the Usambara Mountains of Tanzania (4) and in the southwestern highlands of Uganda (5),

---

Author affiliations: Kenya Medical Research Institute, Kisumu, Kenya (Y.A. Afrane, A.K. Githeko); University of Edinburgh, Edinburgh, Scotland, UK (T.J. Little); Kwame Nkrumah University of Science and Technology, Kumasi, Ghana (Y.A. Afrane, B.W. Lawson); and University of California, Irvine, California, USA (G. Yan)

DOI: 10.3201/eid1410.070781

land use change in Kenya may have exacerbated malaria epidemics caused by *Plasmodium falciparum* parasites and its mosquito vectors *Anopheles gambiae* and *An. funestus* (6–9), although other factors may have also contributed to the surge in epidemics, including global warming (10,11), climate variability (12), and drug resistance (4,13). Land use change can influence malaria transmission by increasing the temperature and decreasing the humidity of vector mosquito habitats. This in turn affects biting, survival, and reproductive rates of vectors (8,9,14,15).

Temperature changes will also shorten the development time of *P. falciparum* in mosquitoes (16–18). Development of malaria parasites in mosquitoes (sporogony) involves a sequential process of developmental steps. Gametocytes ingested by anopheline mosquitoes develop into zygotes, ookinetes, oocysts, and eventually sporozoites in the salivary glands, ready for transmission to the next human host. Generally, the extrinsic incubation period of *P. falciparum* is inversely correlated with temperature. At 27°C, the extrinsic incubation period of *P. falciparum* from zygotes to sporozoites was found to be 12 days (19,20). The relationship between temperature and extrinsic incubation period is not linear because small changes at low temperatures can have proportionally large effects on parasites' extrinsic incubation period. Thus, geographic distribution of malaria is confined within climates favoring its extrinsic cycle, provided that other conditions do not limit mosquito survival (21). In turn, duration of the sporogonic development of malaria parasites in mosquitoes is an important component of vectorial capacity. Vectorial capacity measures the potential rate of contact between infectious vectors and susceptible hosts.

The objective of this study was to assess the effect of deforestation on the microclimate (temperature and

humidity) of houses where mosquitoes normally reside with their parasites and to investigate how these microclimate changes affect the sporogonic development of the malaria parasite within *An. gambiae*. Humidity may not have a direct effect on the sporogonic development of malaria parasites, but it may affect mosquito survival through the combined effect of temperature and humidity (saturation deficit). We hypothesized that land use changes in the highlands alter the microclimatic conditions of vector mosquitoes and their parasites, subsequently enhancing malaria risk in the area.

## Materials and Methods

### Study Sites

This study was conducted at a highland site in Iguhu village (34°45'E, 0°10'N, 1,430–1,580 m above sea level) in Kakamega district in western Kenya. A lowland site in Kisian village (34°75'E, 0°10'S, 1,190 m above sea level) in Kisumu district in western Kenya was studied for comparison. The highland area of Kakamega district has 2 rainy seasons and ≈1,800 mm of rainfall per year. The long rainy season usually occurs between mid-March and May, with an average monthly rainfall 150–260 mm, and the short rainy season usually occurs between September and October, with an average monthly rainfall of 165 mm. Malaria prevalence peaks usually lag 1–2 months after the rain (22). The mean annual daily temperature is 20.8°C. A natural forest is located east of the study area, constituting ≈15% of the total area. The rest of the area is a continuum of forest in different states of deforestation. A forested area was defined as an area having a tree canopy cover >60%. The deforested area has canopy cover <10%. The deforested area was once forested but the forest has been cut down. The predominant malaria vector species in the area is *An. gambiae* s.s. (6,23).

We also studied 1 lowland site (Kisian) as a comparison site for parasite development. Kisian (1,200 m above sea level) is flat land located on the shores of Lake Victoria where malaria transmission is perennial and malaria vectors include *An. gambiae* s. s., *An. arabiensis*, and *An. funestus* (24,25). The land cover type in Kisian is primarily farmland with little tree canopy coverage; thus, Kisian is classified as a deforested area. The average minimum and maximum temperatures during 1970–2000 were 15.0°C and 28.4°C, respectively. The average annual rainfall within this same period was ≈1,400 mm.

### Selection of *P. falciparum* Gametocyte Carriers

The study population was primary school students in Iguhu. Children 5–14 years of age were recruited for this study and were screened monthly for *P. falciparum* game-

toocytes in their blood. The ethical review boards of the Kenya Medical Research Institute, Kenya, and the University of California, Irvine, reviewed and approved the protocol for screening of *P. falciparum* gametocyte carriers and subsequent mosquito infections. Parents or guardians, as well as the children involved in the study, signed a consent or assent form to participate in this study.

### Mosquito Infection

Students (gametocyte carriers) who had >40 gametocytes/μL of blood and who consented to participate in the study were asked to donate 10 mL of blood, which was obtained by a clinician. Butterfly needles were used in drawing the blood into a heparinized tube. This blood was immediately centrifuged at 2,000 rpm for 5 min. The supernatant (serum) was discarded and replaced with human AB serum (Cambrex Bio Science, Walkersville, MD, USA). All equipment used was warmed to 37°C. After replacement of the serum, the blood was placed in warmed artificial membrane feeders. *An. gambiae* mosquitoes were placed in paper cups at a density of 60/cup and allowed to feed on the infected blood for 30 min. Fed mosquitoes were divided and placed in 3 cages (30 cm<sup>3</sup>), which were hung in bedrooms of houses in deforested and forested areas in Iguhu and in the lowland site. Four houses were used at each site. At each mosquito feeding, 600 mosquitoes were provided an opportunity to blood feed and an average of 60–80% of mosquitoes took a blood meal. Fed mosquitoes were distributed equally in cages at the 3 sites. *An. gambiae* mosquitoes used in this experiment were obtained from the village of Iguhu but had been bred in an insectary and adapted to feed from a membrane feeder. All gametocyte donors were treated with amodiaquine by the clinicians in Iguhu Health Centre. Feeding of mosquitoes was conducted in a secure, insect-proof room at the Iguhu Health Centre. Fed mosquitoes were transported to different sites in paper cups placed in cool boxes.

### Dissection for Oocysts and Sporozoites

Starting at 5 days after mosquitoes were exposed to different house environments, 30 mosquitoes from each cage at each site were dissected daily in 2% mercurochrome and examined for oocysts. The gut of each mosquito was carefully drawn out of the abdomen and observed under a light microscope. Infected mosquitoes were counted and the number was recorded; the oocyst load was expressed as number of oocysts per infected mosquito. Dissection for sporozoites started on day 9 postinfection. Salivary glands of each mosquito were taken from the thorax and crushed under a coverslip. This material was then observed under a microscope for sporozoites. This part of the study was conducted during April–November 2005.

### Climate Data Collection

HOBO data loggers (Onset Computer Corporation, Bourne, MA, USA), which are devices for measuring temperature and humidity, were placed inside all experimental houses where the duration of sporogony of *P. falciparum* was measured to record temperature and relative humidity hourly. Data loggers were suspended from the roof 2 m above the ground. Outdoor temperature was recorded by using these data loggers placed in standard meteorologic boxes 2 m above the ground. All selected houses had a data logger for indoor and outdoor microclimate measurements. These data were offloaded from the data loggers by using a HOBO shuttle data transporter (Shuttle; Onset Computer Corporation) and downloaded to a computer by using Box-Car Pro version 4.0 (Onset Computer Corporation).

### Statistical Analysis

Daily mean maximum, mean, and minimum temperatures were calculated from hourly temperature and humidity data recorded throughout the experimental period. Analysis of variance with repeated measures was used to compare monthly mean (based on the average per house in each site) temperatures throughout the entire study period. Analysis of variance was also used to test the effect of site (a fixed effect with 3 levels: forested, deforested, or lowland) and donor child (a random effect) on the average (per cage) time to sporozoite detection, the average (per cage) oocyst load, or the infection rate. Time to sporozoite infection was defined as the time postinfection needed for sporozoites to appear in dissected mosquitoes. Infection rate was defined as the proportion of mosquitoes containing oocysts or sporozoites per total number of mosquitoes dissected in each cage. This proportion was arcsin square root transformed before analysis. Oocyst load was defined as the average of oocyst counts in all the positive mosquito midguts. A total of 34 membrane feedings (34 gametocyte donors) were conducted; 29 feedings yielded infection rates >10% and were used in the data analysis. Analyses were performed with the JMP statistical package (26).

To evaluate how the time for sporozoite development affects vectorial capacity, we used the formula of MacDonald (17). For this analysis, vectorial capacity =  $ma^2p^n / (-\ln(p))$ , in which  $m$  is the relative density of vectors in relation to human density,  $a$  is the average number of persons bitten by 1 mosquito in 1 day,  $p$  is the proportion of vectors surviving per day, and  $n$  is the duration of sporogony in days. Therefore, vectorial capacity is the number of future infections that will arise from 1 current infective case. Vector abundance was calculated from the population dynamics data from the study area during June 2003–June 2004 (27), which was stratified by land use type. Parameter  $a$  was calculated as  $2/\text{first gonotrophic cycle duration}$  that we estimated from the same study site (8), which was also

stratified by land use type, assuming that double feeding is required for 1 gonotrophic cycle. Parameter  $p$  was estimated from results of our previous study on adult survival in the same setting, which is an approximation to observed age-dependent survival (9). Duration of sporogony was calculated on the basis of data from the present study.

## Results

### Indoor Environment

Mean indoor temperatures in experimental houses during the entire experimental period differed significantly among the 3 sites (forested area 21.5°C, deforested area 22.4°C, lowland 23.9°C;  $F_{2,8}$  4.5,  $p < 0.05$ ) (Figure 1). Post hoc contrast showed a difference between the lowland and either highland site. Indoor maximum and minimum temperatures mirrored this difference. Mean indoor humidity within experimental houses also differed significantly among the 3 sites (forested area 75.9%, deforested area

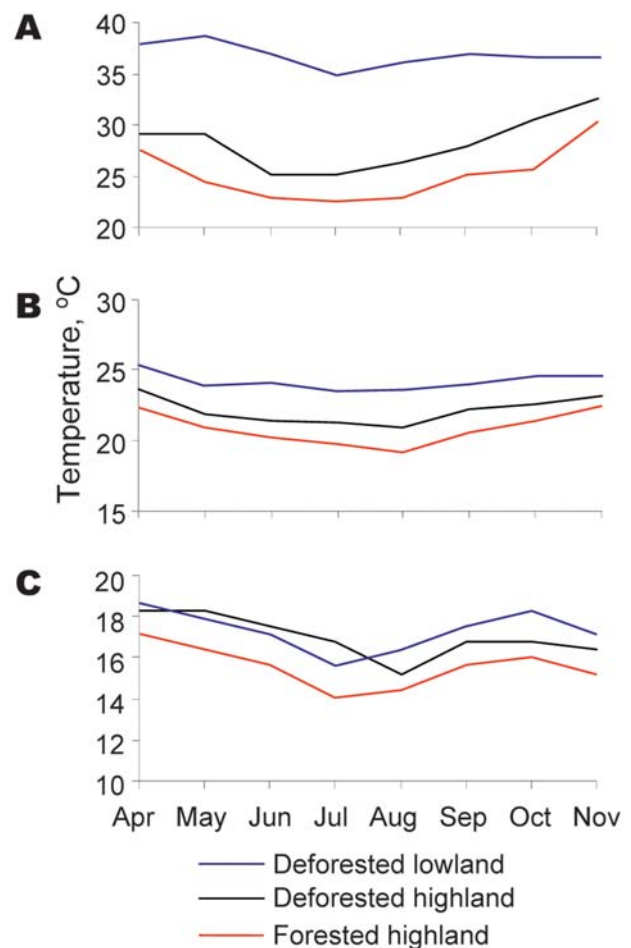


Figure 1. Monthly average value of daily maximum (A), mean (B), and minimum (C) indoor temperatures in forested and deforested areas in western Kenyan highland (Kakamega) and deforested lowland (Kisian), April–November 2005.

60.6%, lowland 64.7%;  $F_{2,8} = 8.1$ ,  $p < 0.05$ ) (Table 1). Post hoc contrast showed a significant difference between the lowland and both highland sites and between the forested and deforested areas in the highland ( $F_{1,7} = 14.5$ ,  $p < 0.001$ ).

### Outdoor Environment

Mean outdoor temperatures within the experimental houses during the entire experimental period differed significantly among the 3 sites (forested 19.0°C, deforested 19.9°C, lowland 22.4°C;  $F_{2,8} = 58.1$ ,  $p < 0.0001$ ). Post hoc contrast showed a significant difference between the lowland and either highland site, and also between the forested and deforested areas in the highland ( $F_{1,8} = 82.8$ ,  $p < 0.05$ ). Indoor maximum and minimum temperatures mirrored this difference. Mean outdoor humidity did not differ among the 3 sites ( $F_{2,8} = 2.6$ ,  $p > 0.05$ ); this was true also for maximum and minimum humidity values.

### Parasite Infection and Development

The number of oocysts in a mosquito ranged from 1 to 98. The proportion of mosquitoes that carried *P. falciparum* infection (either oocysts or sporozoites) differed significantly among the sites ( $F_{2,30} = 12.1$ ,  $p < 0.0001$ ) (Figure 2, panel A), and post hoc contrast indicated a significant forested–deforested difference within the highland site ( $F_{1,30} = 16.5$ ,  $p < 0.0001$ ). Mean oocyst intensity was affected by land use type ( $F_{2,30} = 6.5$ ,  $p < 0.01$ ) (Figure 2, panel B). Time for sporozoite development differed between sites ( $F_{2,13} = 9.1$ ,  $p < 0.01$ ), and post hoc contrasts indicated a significant difference between forested and deforested areas in the highland site ( $F_{1,13} = 6.9$ ,  $p < 0.05$ ) (Figure 2, panel C), and the lowland site exhibited the shortest sporozoite development time. Post hoc contrasts did not result in different conclusions from the alternative approach of reducing the number of factor levels in the dataset (e.g., comparing forested with deforested sites in the absence of lowland data).

### Effects of Deforestation on Vectorial Capacity

Vectorial capacity at the 3 study sites was estimated by using the formula of MacDonald (17). Female *A. gambiae* mosquito density ( $m$ ) was estimated to be 3.05 mosquitoes/person/day in the highland forested area,  $\approx 4.64$  in the highland deforested area, and  $\approx 8$  in the lowland site (27). We estimated vectorial capacity to be 77.7% higher in the deforested area than in the forested area in the highlands (Table 2).

### Discussion

Environmental changes, whether natural phenomena or the result of human intervention, alter the ecologic context within which vectors and their parasites breed, develop, and transmit disease (28). Large-scale conversion of tropical forests for agricultural purposes can change surface properties (e.g., soil wetness, reflectivity, and evaporation rates) of an area, leading to changes in local climate (29–31). Bounoua et al. (32) reported that in the tropics and subtropics, conversion warms canopy temperature by 0.8°C year round. Our study established the role of deforestation on local microclimate and on the sporogonic development of *P. falciparum* in *An. gambiae* mosquitoes from the western Kenyan highlands. Deforestation appears to alter the climate in highlands, in particular, making it warmer and less humid. Ingestion of *P. falciparum* gametocytes by *An. gambiae* mosquitoes is more likely to result in infection, and the development time for oocysts and sporozoites is shorter in deforested sites than in forested sites. Given the established effects of temperature on *P. falciparum* development, we conclude that changes in climatic conditions caused by deforestation have caused changes in parasite infection rates and development.

Our results are supported by those of other studies. Okech et al. (33) showed that in different microhabitats with different temperatures in a lowland site in western

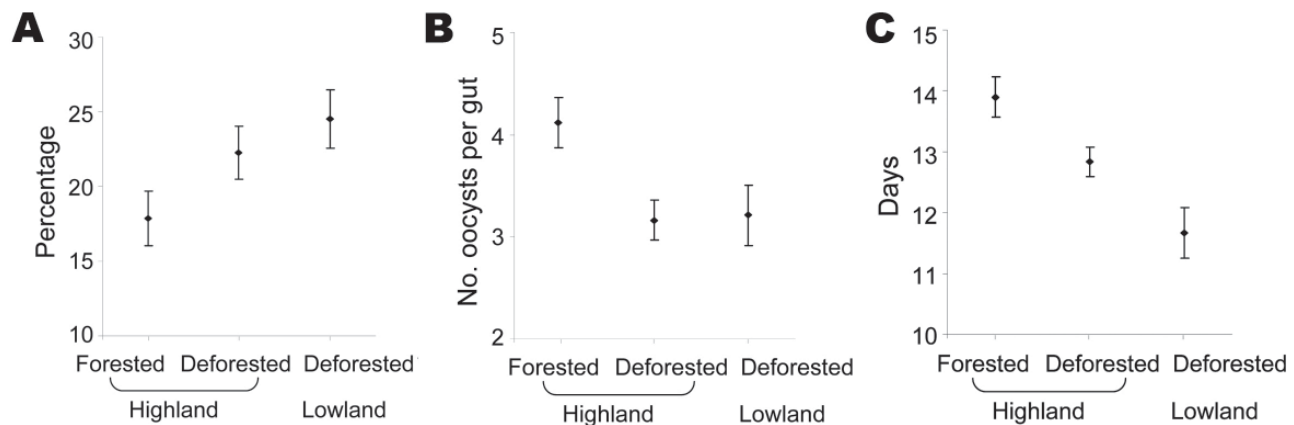


Figure 2. Mean infection rate (A), mean oocyst intensity (B), and time to sporozoite detection (C) in forested and deforested areas in western Kenyan highland (Kakamega) and deforested lowland (Kisian), April–November 2005. Error bars represent standard error.

Table 1. Climatic conditions and *Plasmodium falciparum* infection in *Anopheles gambiae* mosquitoes fed infected blood meals according to site and land use type, western Kenyan highland and lowland\*

Site	Land use type	Mean $\pm$ SD indoor temperature, °C	Mean $\pm$ SD indoor relative humidity, %	No. membrane feedings	No. feedings resulting in infection	Total no. mosquitoes dissected	Range of infection rates, † %
Highland	Forested	20.89 $\pm$ 0.39 <sup>a</sup>	75.9 $\pm$ 1.8 <sup>a</sup>	34	27	3,171	10.0–42.8
Highland	Deforested	22.13 $\pm$ 0.27 <sup>b</sup>	60.6 $\pm$ 2.1 <sup>b</sup>	34	29	3,719	10.2–40.6
Lowland	Deforested	23.90 $\pm$ 0.40 <sup>c</sup>	64.7 $\pm$ 2.1 <sup>b</sup>	21	19	1,749	11.0–42.4

\*Superscript letters after values indicate results of Tukey-type multiple comparison tests. Values with the same superscript letter in the same column were not statistically significant ( $p = 0.05$ ).  
†Infection rate refers to proportion of dissected mosquitoes that were infected with *P. falciparum* oocysts or sporozoites.

Kenya, increasing temperatures led to an increase in infection rates of *An. gambiae* mosquitoes fed on blood infected with *P. falciparum* gametocytes. However, as with our study, in the study of Okech et al. (33), oocyte densities did not differ with increasing temperatures. Noden et al. (19) examined the effect of temperature on development of *P. falciparum* in *An. stephensi* mosquitoes (normally a vector of rodent malaria) and found that the rate of ookinate development was lengthened as temperature decreased from 27°C to 21°C. They concluded that temperature affects sporogonic development of *P. falciparum* in anophelines by altering kinetics of ookinete maturation.

Our study has implications for understanding the effects of deforestation on malaria risk in the western Kenyan and other Africa highlands. Force of malaria transmission may be measured by using vectorial capacity. Duration of sporogony of *P. falciparum* in mosquitoes is exponentially related to vectorial capacity (17). If daily survival and biting frequency of a vector are assumed to be constant, decreasing the duration of sporogony leads to an increase in vectorial capacity. In our study, deforestation led to a decrease in duration of sporogony of *P. falciparum* by 1.1 days. Together with other factors that were also influenced by deforestation, such as increased mosquito density, biting frequency, and enhanced survivorship, This decrease translates into an increase in vectorial capacity of *An. gambiae* mosquitoes by 77.7%. The implication of this finding is that deforestation in the western Kenyan highlands could potentially increase malaria risk. In African highlands where temperature is an important driving factor for malaria and the human population generally has little functional immunity (34), relationships between land use, microclimate, and malaria should be carefully considered during economic development planning to mitigate the effects of malaria on human health.

## Acknowledgments

We thank all participants in the study for their cooperation and R. Oriango, J. Otete, C. Ouma, P. Omodi, N. Juma, and M. Allende for technical assistance. We also thank 3 anonymous reviewers for constructive comments. This article is published with permission of the Director of Kenya Medical Research Institute.

The study was supported by National Institutes of Health grants R01 A150243 and D43 TW01505 to G.Y.

Dr Afrane is a postdoctoral research fellow at the Kenya Medical Research Institute in Kisumu, Kenya. His research interests are malaria vector ecology and vector–parasite interactions.

## References

1. Round-Turner D. Kakamega Forest, the official guide. Nairobi (Kenya): Kenya Indigenous Forest Conservation Programme; 1994.
2. Brooks TM, Pimm SL, Oyugi JO. Time lag between deforestation and bird extinction in tropical forest fragments. *Conservation Biology*. 1999;13:1140–50. DOI: 10.1046/j.1523-1739.1999.98341.x
3. Food and Agricultural Organization. Forest resources assessment, 1990: tropical countries. FAO forestry paper no. 112. Rome: The Organization; 1993.
4. Bodker R, Akida J, Shayo D, Kisinza W, Msangeni HA, Pedersen EM, et al. Relationship between altitude and intensity of malaria transmission in the Usambara Mountains, Tanzania. *J Med Entomol*. 2003;40:706–17.
5. Lindblade KA, Walker ED, Onapa AW, Katungu J, Wilson ML. Land use change alters malaria transmission parameters by modifying temperature in a highland area of Uganda. *Trop Med Int Health*. 2000;5:263–74. DOI: 10.1046/j.1365-3156.2000.00551.x
6. Githeko AK, Ndegwa W. Predicting malaria epidemics in the Kenya highlands using climate data: a tool for decision makers. *Global Change and Human Health*. 2001;2:54–63. DOI: 10.1023/A:1011943131643
7. Munga S, Minakawa N, Zhou G, Mushinzimana E, Barrack OO, Githeko AK, et al. Association between land cover and habitat productivity of malaria vectors in western Kenyan highlands. *Am J Trop Med Hyg*. 2006;74:69–75.

Table 2. Estimated vectorial capacity of *Anopheles gambiae* mosquitoes in forested and deforested areas, western Kenyan highland and lowland\*

Site	Land use type	<i>m</i>	<i>a</i>	<i>N</i>	<i>P</i>	Vectorial capacity
Highland	Forested	3.05	0.198	13.9	0.927	0.54
Highland	Deforested	4.64	0.233	12.8	0.917	0.96
Lowland	Deforested	7.85	0.465	11.7	0.923	8.30

\**m*, relative density of vectors in relation to humans; *a*, average no. children bitten by 1 mosquito in 1 day; *n*, duration of sporogony in days; *P*, proportion of vectors surviving per day. See text for details on data source and assumptions made for calculating each variable.

8. Afrane YA, Lawson BW, Githeko AK, Yan G. Effects of microclimatic changes due to land use and land cover on the duration of gonotrophic cycles of *Anopheles gambiae* Giles (Diptera: Culicidae) in western Kenya highlands. *J Med Entomol*. 2005;42:974–80. DOI: 10.1603/0022-2585(2005)042[0974:EOMCCB]2.0.CO;2
9. Afrane YA, Zhou G, Lawson BW, Githeko AK, Yan G. Effects of microclimatic changes due to deforestation on the survivorship and reproductive fitness of *Anopheles gambiae* in western Kenya highlands. *Am J Trop Med Hyg*. 2006;74:772–8.
10. Loevisohn ME. Climatic warming and increased malaria incidence in Rwanda. *Lancet*. 1994;343:714–8. DOI: 10.1016/S0140-6736(94)91586-5
11. Martens P, Kovats RS, Nijhof S, de Vries P, Livermore MTJ, Bradley DJ, et al. Climate change and future populations at risk of malaria. *Global Environmental Change*. 1999;9:S89–S107. DOI: 10.1016/S0959-3780(99)00020-5
12. Zhou G, Minakawa N, Githeko AK, Yan G. Association between climate variability and malaria epidemics in the East African highlands. *Proc Natl Acad Sci U S A*. 2004;101:2375–80. DOI: 10.1073/pnas.0308714100
13. Shanks GD, Biomndo K, Maguire J. Travel as a risk factor for malaria requiring hospitalization on a highland tea plantation in western Kenya. *J Travel Med*. 2004;11:354–7.
14. Vittor AY, Gilman RH, Tielsch J, Glass G, Shields T, Lozano WS, et al. The effect of deforestation on the human-biting rate of *Anopheles darlingi*, the primary vector of falciparum malaria in the Peruvian Amazon. *Am J Trop Med Hyg*. 2006;74:3–11.
15. Rúa GL, Quiñones ML, Vélez ID, Zuluaga JS, Rojas W, Poveda G, et al. Laboratory estimation of the effects of increasing temperatures on the duration of gonotrophic cycle of *Anopheles albimanus* (Diptera: Culicidae). *Mem Inst Oswaldo Cruz*. 2005;100:515–20. DOI: 10.1590/S0074-02762005000500011
16. Boyd MF. *Malariaology*. Philadelphia: W.B. Saunders; 1949.
17. MacDonald G. *The epidemiology and control of malaria*. Oxford (UK): Oxford University Press; 1957.
18. Vanderberg JP, Yoeli M. Effects of temperature on sporogonic development of *Plasmodium berghei*. *J Parasitol*. 1966;52:559–64. DOI: 10.2307/3276326
19. Noden BH, Kent MD, Beier JC. The impact of variations in temperature on early *Plasmodium falciparum* development in *Anopheles stephensi*. *Parasitology*. 1995;111:539–45.
20. Gilles MT, Warrel DA. *Bruce-Chwatt's essential malariaology*, 3rd ed. London: Edward Arnold; 1993.
21. Craig MH, Snow RW, le Sueur D. A climate-based distribution model of malaria transmission in sub-Saharan Africa. *Parasitol Today*. 1999;15:105–11. DOI: 10.1016/S0169-4758(99)01396-4
22. Munyekenye OG, Githeko AK, Zhou G, Mushinzimana E, Minakawa N, Yan G. *Plasmodium falciparum* spatial analysis, western Kenya highlands. *Emerg Infect Dis*. 2005;11:1571–7.
23. Minakawa N, Sonye G, Mogi M, Yan G. Habitat characteristics of *Anopheles gambiae* s.s. larvae in a Kenyan highland. *Med Vet Entomol*. 2004;18:301–5. DOI: 10.1111/j.0269-283X.2004.00503.x
24. Githeko AK, Service MW, Mbogo CM, Atieli FK. Resting behaviour, ecology and genetics of malaria vectors in large scale agricultural areas of western Kenya. *Parasitologia*. 1996;38:481–9.
25. Mutuku FM, Bayoh MN, Gimnig JE, Vulule JM, Kamau L, Walker ED. Pupal habitat productivity of *Anopheles gambiae* complex mosquitoes in a rural village in western Kenya. *Am J Trop Med Hyg*. 2006;74:54–61.
26. SAS Institute, Inc. *JMP user's guide*. Cary (NC): The Institute; 1994.
27. Ndenga B, Githeko AK, Omukunda E, Munyekenye OG, Atieli H, Wamae P, et al. Population dynamics of malaria vectors in the western Kenya highlands. *J Med Entomol*. 2006;43:200–6. DOI: 10.1603/0022-2585(2006)043[0200:PDOMVI]2.0.CO;2
28. Patz JA, Graczyk TK, Geller N, Vittor AY. Effects of environmental change on emerging parasitic diseases. *Int J Parasitol*. 2000;30:1395–405. DOI: 10.1016/S0020-7519(00)00141-7
29. Ramakrishna R, Running SW. Satellite monitoring of global land cover changes and their impact on climate. *Climate Change*. 1995;31:315–493.
30. Lindblade KA, Walker ED, Wilson ML. Early warning of malaria epidemics in African highlands using *Anopheles* (Diptera: Culicidae) indoor resting density. *J Med Entomol*. 2000;37:664–74.
31. Skinner WR, Majorowicz JA. Regional climatic warming and associated twentieth century land-cover changes in north-western North America. *Climate Research*. 1999;12:39–52. DOI: 10.3354/cr012039
32. Bounoua L, DeFries R, Collatz GJ, Sellers P, Khan H. Effects of land cover conversion on surface climate. *Climate Change*. 2002;52:29–64. DOI: 10.1023/A:1013051420309
33. Okech BA, Gouagna LC, Walczak E, Kabiru EW, Beier JC, Yan G, et al. The development of *Plasmodium falciparum* in experimentally infected *Anopheles gambiae* (Diptera: Culicidae) under ambient microhabitat temperature in western Kenya. *Acta Trop*. 2004;92:99–108. DOI: 10.1016/j.actatropica.2004.06.003
34. Lindsay SW, Martens WJ. *Malaria in the African highlands: past, present and future*. *Bull World Health Organ*. 1998;76:33–45.

Address for correspondence: Guiyun Yan, Program in Public Health, College of Health Sciences, University of California, Irvine, CA 92697, USA; email: [guiyuny@uci.edu](mailto:guiyuny@uci.edu)

## The Public Health Image Library (PHIL)



The Public Health Image Library (PHIL), Centers for Disease Control and Prevention, contains thousands of public health-related images, including high-resolution (print quality) photographs, illustrations, and videos.

PHIL collections illustrate current events and articles, supply visual content for health promotion brochures, document the effects of disease, and enhance instructional media.

PHIL Images, accessible to PC and Macintosh users, are in the public domain and available without charge.

Visit PHIL at <http://phil.cdc.gov/phil>.