



THE UNIVERSITY *of* EDINBURGH

Edinburgh Research Explorer

Whole Genome Sequence and Comparative Genomics Analysis of Multi-drug Resistant Environmental ST59

Citation for published version:

Xu, Z, Misra, R, Jamrozy, D, Paterson, GK, Cutler, RR, Holmes, MA, Gharbia, S & Mkrтчyan, HV 2018, 'Whole Genome Sequence and Comparative Genomics Analysis of Multi-drug Resistant Environmental ST59', *G3: Genes | Genomes | Genetics*, vol. 8, no. 7, pp. 2225-2230 .
<https://doi.org/10.1534/g3.118.200314>

Digital Object Identifier (DOI):

[10.1534/g3.118.200314](https://doi.org/10.1534/g3.118.200314)

Link:

[Link to publication record in Edinburgh Research Explorer](#)

Document Version:

Publisher's PDF, also known as Version of record

Published In:

G3: Genes | Genomes | Genetics

Publisher Rights Statement:

This is an open-access article distributed under the terms of the Creative Commons Attribution 4.0 International License (<http://creativecommons.org/licenses/by/4.0/>), which permits unrestricted use, distribution, and reproduction in any medium, provided the original work is properly cited.

General rights

Copyright for the publications made accessible via the Edinburgh Research Explorer is retained by the author(s) and / or other copyright owners and it is a condition of accessing these publications that users recognise and abide by the legal requirements associated with these rights.

Take down policy

The University of Edinburgh has made every reasonable effort to ensure that Edinburgh Research Explorer content complies with UK legislation. If you believe that the public display of this file breaches copyright please contact openaccess@ed.ac.uk providing details, and we will remove access to the work immediately and investigate your claim.



Whole Genome Sequence and Comparative Genomics Analysis of Multi-drug Resistant Environmental *Staphylococcus epidermidis* ST59

Zhen Xu,^{*,†} Raju Misra,[‡] Dorota Jamroz,[§] Gavin K. Paterson,^{**} Ronald R. Cutler,[†] Mark A. Holmes,^{††} Saheer Gharbia,[‡] and Hermine V. Mkrtychyan¹

^{*}Department of Public Health, National Demonstration Center for Experimental Preventive Medicine Education, Tianjin Medical University, Tianjin, China 300070, [†]School of Biological and Chemical Sciences, Queen Mary University of London, London, UK E1 4NS, [‡]Natural History Museum, Core Research Laboratories, Molecular Biology, London, UK SW7 5BD, [§]The Wellcome Trust Sanger Institute, Cambridge, UK CB10 1SA, ^{**}The Royal (Dick) School of Veterinary Studies and Roslin Institute, University of Edinburgh, Easter Bush Campus, Midlothian, UK EH8 9LE, and ^{††}Department of Veterinary Medicine, University of Cambridge, Cambridge, UK CB3 0ES

ABSTRACT *Staphylococcus epidermidis* is a major opportunistic pathogen primarily recovered from device-associated healthcare associated infections (DA-HAIs). Although *S. epidermidis* and other coagulase-negative staphylococci (CoNS) are less virulent than *Staphylococcus aureus*, these bacteria are an important reservoir of antimicrobial resistance genes and resistance-associated mobile genetic elements that can be transferred between staphylococcal species. We report a whole genome sequence of a multidrug resistant *S. epidermidis* (strain G6_2) representing multilocus sequence type (ST) 59 and isolated from an environmental sampling of a hotel room in London, UK. The genome of *S. epidermidis* G6_2 comprises of a 2408357 bp chromosome and six plasmids, with an average G+C content of 32%. The strain displayed a multi-drug resistance phenotype which was associated with carriage of 7 antibiotic resistance genes (*bla_Z*, *mecA*, *msrA*, *mphC*, *fosB*, *aacA-aphD*, *tetK*) as well as resistance-conferring mutations in *fusA* and *ileS*. Antibiotic resistance genes were located on plasmids and chromosome. Comparative genomic analysis revealed that antibiotic resistance gene composition found in G6_2 was partly preserved across the ST59 lineage.

KEYWORDS

Staphylococcus epidermidis
antibiotic
resistance
whole genome
sequence
comparative
analysis

Staphylococcus epidermidis is a common human skin commensal, but also the most frequent pathogen among coagulase-negative staphylococci (CoNS), causing primarily device-associated healthcare associated infections (DA-HAIs). Compared with more virulent *S. aureus*, CoNS rarely produce toxins and less is known on whether the toxin genes contribute to strain virulence (Otto 2013a). *S. epidermidis* forms biofilms on medical devices and implants, from which single cells dissociate and disseminate via the bloodstream to start colonization at a different site, which might lead to sepsis, meningitis and endocar-

ditis (Becker *et al.* 2014). In addition, *S. epidermidis* and other CoNS are believed to act as a reservoir of resistance and virulence genes for *S. aureus*, contributing to the evolution and emergence of successful clones of methicillin-resistant *S. aureus* (MRSA) (Otto 2013b).

Together with *S. aureus* and other CoNS, *S. epidermidis* accounts for 30% of hospital associated infections (Conlan *et al.* 2012). These nosocomial pathogens have developed an arsenal of strategies contributing to colonization and infection of the hosts (Becker *et al.* 2014), while often being resistant to multiple antibiotics. Emergence of antibiotic resistant bacteria has been mostly attributed to the healthcare-associated settings (Oliveira and Tomasz 2002). However, more recently, selection of antibiotic resistance has been also associated with the community which has been linked to the misuse of antibiotics (DeLeo *et al.* 2010). A typical example of this is the community-acquired MRSA (CA-MRSA) which, in addition to acquiring methicillin resistance, has gradually increased the frequency of resistance determinants similarly to hospital-acquired MRSA (HA-MRSA) (Chambers 2005). There is an increasing evidence that horizontal gene transfer between closely related species may contribute to this (Otto 2013a).

Copyright © 2018 Xu *et al.*

doi: <https://doi.org/10.1534/g3.118.200314>

Manuscript received November 9, 2017; accepted for publication April 23, 2018; published Early Online April 30, 2018.

This is an open-access article distributed under the terms of the Creative Commons Attribution 4.0 International License (<http://creativecommons.org/licenses/by/4.0/>), which permits unrestricted use, distribution, and reproduction in any medium, provided the original work is properly cited.

Supplemental material available at Figshare: <https://doi.org/10.25387/g3.6133946>.

¹Correspondence: School of Health, Sport and Biosciences, University of East London, Water Lane, London, UK E15 4LZ; E-mail: h.mkrtychyan@uel.ac.uk.

Recently, Méric *et al.* showed that *S. aureus* and *S. epidermidis* share half of the genome and while homologous recombination between the two species was rare, there was an evidence of extensive MGE sharing, in particular SCC*mec*, metal resistance and SaPin1 elements (Méric *et al.* 2015). As a result, attention is now focusing on the multidrug-resistant coagulase-negative staphylococci and their rapid spread as opportunistic pathogens particularly in relation to patients with an immuno-compromised status (Morfin-Otero *et al.* 2012). Multidrug-resistant coagulase-negative staphylococci (MDR-CoNS) are primarily recovered from healthcare-associated medical devices, ambulatory patients and healthy animals (Becker *et al.* 2014).

Molecular approaches such as pulse field gel electrophoresis and multi-locus sequence typing have been widely used to evaluate the dissemination of resistant clones of bacteria (Miragaia *et al.* 2008). Recently, complete genome sequencing of *S. epidermidis* strains have been reported, however these are limited to commensal and nosocomial strains (Conlan *et al.* 2012; Gill *et al.* 2005; Zhang *et al.* 2003). Only one study has compared whole genome sequences of four *S. epidermidis* isolated from rice seeds with that of type strain (Chaudhry and Patil 2016). To our knowledge this is the first whole genome based study looking at MDR-CoNS isolated from general public settings.

In this study, we present the genetic features of this multidrug resistant *S. epidermidis* (strain G6_2) and compare it with six *S. epidermidis* reference genomes and 133 previously published genomes of clinical *S. epidermidis*.

MATERIAL AND METHODS

Isolates analyzed in this study

Between October 2012 and April 2013, we sampled different sites in three hotels in London, UK. Permission to carry out sampling was granted by the manager/owner of each hotel and the results from each hotel were reported to each manager/owner for their information. Inanimate objects in 32 hotel rooms were sampled using COPAN dry swabs (Copan Diagnostics Inc., USA). All specimens were inoculated onto Nutrient Agar (Oxoid, Basingstoke, UK) and Mannitol Salt Agar plates (Oxoid Basingstoke, UK). These cultures were incubated aerobically at 37° for 24–72 h.

The *S. epidermidis* G6_2 was recovered from one of the hotel rooms in April 2013 in London, UK. Preliminary identification was achieved by using Matrix-assisted laser desorption ionization time-flight mass-spectroscopy (Microflex LT, MALDI-TOF-MS, Bruker Daltonics, Coventry, UK) as described previously (Mkrtchyan *et al.* 2013).

For comparative genomics analysis genomes of six *S. epidermidis* reference strains were included: RP62A (Gill *et al.* 2005), ASM1192v1), ATCC12228 (Zhang *et al.* 2003), ASM764v1), SEI (Davenport *et al.* 2014), CP009046), 949_S8 (Biswas *et al.* 2015), CP010942), PM221 (Savijoki *et al.* 2014), HG813242), and BPH 0662 (Jyh *et al.* 2016), NZ_LT571449) together with 129 *S. epidermidis* genomes derived from two previously published collections (Roach *et al.* 2015; Tewhey *et al.* 2014).

16S rRNA gene sequencing

Genomic DNA of *S. epidermidis* G6_2 was prepared using a Qiagen DNA extraction kit (Qiagen, Crawley, UK). 16S rRNA amplification was performed as described previously (Okazaki *et al.* 2009), PCR products were sequenced by Eurofins MWG GmBH (Ebersberg, Germany) using ABI 3730 L DNA analyzer.

Molecular characterization of *S. epidermidis* G6_2

Carriage of the *mecA* gene was determined with PCR as described previously (Hanssen *et al.* 2004). SCC*mec* typing was carried out by

determination of *mec* and *ccr* complexes (Kondo *et al.* 2007). Multi locus sequence typing (MLST) has been used to determine seven house-keeping genes as describe previously (Thomas *et al.* 2006). Sequence types were determined using MLST V1.8 software (<https://cge.cbs.dtu.dk/services/MLST/>).

Antibiotic susceptibility testing

The antibiotic susceptibility of *S. epidermidis* G6_2 was tested against 13 antibiotics (Mast Group, Merseyside, UK) using disk diffusion methods according to BSAC guidelines (J. M. Andrews and Howe 2011). This included penicillin (1 unit), amoxicillin (10 µg), cefoxitin (10 µg), oxacillin (1 µg), cefepime (30 µg), vancomycin (5 µg), gentamicin (10 µg), streptomycin (10 µg), mupirocin (20 µg), erythromycin (15 µg), tetracycline (10 µg), fusidic acid (10 µg) and chloramphenicol (30 µg). In addition, the minimum inhibitory concentration (MIC) of the isolate to oxacillin was determined using “M.I.C. evaluators” (Oxoid Ltd., Basingstoke, UK).

Whole genome sequencing, assembly and comparative genomics

Genomic DNA was extracted using the MasterPure Gram Positive DNA Purification Kit (Cambio, Dry Drayton, UK) from overnight cultures grown from single colonies in 5 ml of tryptic soy broth overnight at 37°. Illumina library preparation was carried out as described previously (Quail *et al.* 2008), and genome sequencing using Hi-Seq2000 performed following the manufacturer’s standard protocols (Illumina, Little Chesterfield, UK). The raw fastq data were quality trimmed using trimmomatic, (version 0.35) default settings, specifying a phred cutoff of Q20. Read quality was assessed using FastQC (Andrews 2011) and Kraken (version 0.10.5-beta) metagenomic pipeline (Wood and Salzberg 2014), including KronaTools (version 2.5) (Ondov *et al.* 2011) was used to assess library purity, that is, it was not a mixed sample and ensure the species was *S. epidermidis*. *De novo* assemblies were performed using assembler, SPAdes (version 3.5.0) (Bankevich *et al.* 2012), default PE settings, from which only contigs greater than 500 bp in length were taken for further analysis. Using the program, Andi (version 0.9.4-beta) (Haubold *et al.* 2015) the *de novo* assembled G6_2 genome along with 108 assembled Staphylococci genomes were aligned, clustered and visualized using PHYLP (<http://evolution.genetics.washington.edu/phylip.html>) and FigTree (<http://tree.bio.ed.ac.uk/software/figtree/>). Annotations were performed using the pipeline Prokka (version 1.11) (Seemann 2014). The resultant annotated genome was used for all subsequent comparative genomic studies. Carriage of antimicrobial resistance and virulence genes was assessed using the SRST 2 software (Inouye *et al.* 2014) and the ARG-ANNOT (Gupta *et al.* 2014) and VF-DB databases (Chen *et al.* 2016). Pan-genome analysis was performed using the Roary pipeline (version 3.4.2) (Page *et al.* 2015). To reconstruct phylogenetic tree, short reads were mapped against the *S. epidermidis* ATCC12228 reference genome (Zhang *et al.* 2003), using SMALT version 0.5.8 (<http://www.sanger.ac.uk/science/tools/smalt-0>). A core genome alignment was created after excluding MGE regions, variable sites associated with recombination (detected with Gubbins (Croucher *et al.* 2015) and sites with more than 5% proportion of gaps (*i.e.*, sites with an ambiguous base). A maximum likelihood (ML) phylogenetic tree was generated with RAxML v8.2.8 (Stamatakis 2014) based on generalized time reversible (GTR) model with GAMMA method of correction for among site rate variation and 100 bootstrap (BS) replications. The phylogenetic tree was annotated using Evolview (Zhang *et al.* 2012).

■ **Table 1 Comparative general features of *S. epidermidis* G6_2 and the reference strains**

Chromosome ^a	RP62a	ATCC 12228	SEI	949_S8	PM221	BPH 0662	G6_2
Length of sequences (bp)	2616530	2499279	2538314	2339868	2490012	2793003	2408357
G+C content	32.10%	32.10%	32.10%	32.00	32.10%	32.00%	32.02%
Protein coding region	2391	2419	2504	2119	2399	2699	2213
Ribosomal RNAs							4
16S	6	5	6	- ^b	6	5	1
23S	6	5	6	- ^b	6	5	1
5S	7	6	7	5	7	6	2
Transfer RNAs	59	60	58	56	59	59	60
Plasmids ^c							
Length of sequences (bp)	P1:27310	P1:4439 P2:4679 P3:8007 P4:17261 P5:24370 P6:6585	P1:37688	- ^b	P1:4439 P2:11152 P3:33094 P4:58811	P1:45804 P2:2366	P1:10570 P2:4909 P3:4588 P4:4576 P5:4271 P6:3426

^aChromosome section includes: the length of the chromosome, G+C content of the chromosome, protein coding region, ribosomal RNA and transfer RNAs numbers.

^b,- No data available in Genbank file. Draft assembly.

^cPlasmids section includes: the length of each plasmid and the number of plasmids. P - Plasmid. Numbers - the number of plasmids.

Nucleotide sequence accession numbers

Reads for *S. epidermidis* G6_2 were submitted to the European Bioinformatics Institute Sequence Read Archive, accession ERR387168.

Data availability

The authors state that all data necessary for confirming the conclusions presented in the article are represented fully within the article and its tables and figures. Supplemental material available at Figshare: <https://doi.org/10.25387/g3.6133946>.

RESULTS AND DISCUSSION

S. epidermidis has become a leading hospital-associated pathogen due to the increased use of medical devices (Vuong *et al.* 2004). Treatment of *S. epidermidis* infections is challenging as the bacteria are commonly resistant to methicillin and might also display multi-drug resistance phenotype, which presents a serious public health challenge (Xu *et al.* 2015). *S. epidermidis*, represents an important reservoir of mobilizable genes that can be horizontally transferred between staphylococci species, which has likely contributed to the development of antibiotic resistance in *S. aureus* (Otto 2013a).

S. epidermidis G6_2 was isolated from a hotel room in London, UK in 2013, and the species were determined by MALDI-TOF MS and 16S rRNA sequencing. Initial molecular analysis revealed that the *S. epidermidis* G6_2 strain was *mecA* positive, carrying SCC*mec* type IV, and represented ST59.

A draft genome was assembled, comprising of 53 contigs (48 >= 1kb) for the isolated *S. epidermidis* G6_2 genome (Table S1; Table S2 and Figure S1). The assembly comprised of one chromosome (2408357 bp in length) and six plasmids, annotated as pG6_2_1 to pG6_2_6 (the largest, pG6_2_1, is 10570 and the smallest, pG6_2_6, is 3426 bp in length), with an average G+C content of 32.02%. It has a total (chromosome and plasmids) of 2213 predicted protein coding sequences, of which 21.5% were annotated as hypothetical proteins and 14.3% were annotated as putative functions (Table 1).

Phylogenetic relationship with other *S. epidermidis* isolates

A previously described collection of 129 whole genome-sequenced *S. epidermidis* isolates together with 6 reference strains was used to determine the phylogenetic relationship between the G6_2 strain and

other *S. epidermidis* lineages. After removal of variable sequence regions corresponding to mobile genetic elements (MGE), recombination blocks as well as sites with more than 5% proportion of gaps, the core genome alignment contained 4262 SNP sites. Seven ST59 isolates clustered and formed a distinct clade with *S. epidermidis* G6_2 (Figure 1).

Genotypic and phenotypic characterization of antibiotic resistance

S. epidermidis G6_2, revealed 9 antibiotic resistance determinates across the chromosome and plasmids (Table 2). This included aminoglycoside resistance gene *aac(6)* – *aph(2)*, beta-lactam resistance genes *mecA* and *blaZ*, fosfomycin resistance gene *fosB*, macrolide resistance genes *mphH* and *msrA* (the latter also conferring resistance to lincosamide and streptogramin B) and tetracycline resistance gene *tet(K)*. This correlated with the results of antibiotic susceptibility testing as the strain was found resistant to 11 out of 13 antibiotics tested, demonstrating susceptibility to vancomycin and chloramphenicol only. Resistance to mupirocin and fusidic acid was associated with point mutations in chromosomally located genes, *ileS* and *fusA*, respectively. In addition to antimicrobial resistance genes, the G6_2 strain also carried plasmid-associated *qacC* gene, which encodes the multidrug resistance efflux protein and mediates resistance to biocides, and a chromosomally-inserted copper resistance operon composed of *copZ-copA-csoR* genes together with an additional copy of cobalt-zinc-cadium efflux pump gene *czcD*. The latter was distinct from the conserved chromosomal copy of *czcD* gene, and was previously identified on a number of CoNS plasmids.

The G6_2 strain carried a 47-kb composite island composed of the SCC*mec* IV and a SCC element that contained plasmin-sensitive surface protein gene *pIs*, spermidine N-acetyltransferase gene *speG* and a copper-translocating ATPase gene *copA*. The full sequence of this composite island was unique and did not match previously described reference genomes. However, the SCC*mec* IV sequence shared 99% identity with SCC*mec* IVa from various MRSA strains including the MRSA M1 isolated in Denmark (Larner-Svensson *et al.* 2013). The SCC element matched most closely the MRSA UCI62 strain representing ST5 (GenBank: CP018766). Carriage of *blaZ*, *tetK* and *qacC* genes was associated with plasmid sequences whereas other genes were inserted chromosomally. Elements carrying *tetK* and *qacC* matched previously reported *S. aureus* plasmids. Méric *et al.* showed that hospital associated *S. aureus* and *S. epidermidis* share genes involved in pathogenicity, metal toxicity resistance and antibiotic resistance. In addition they have demonstrated that high levels of recombination of genes that

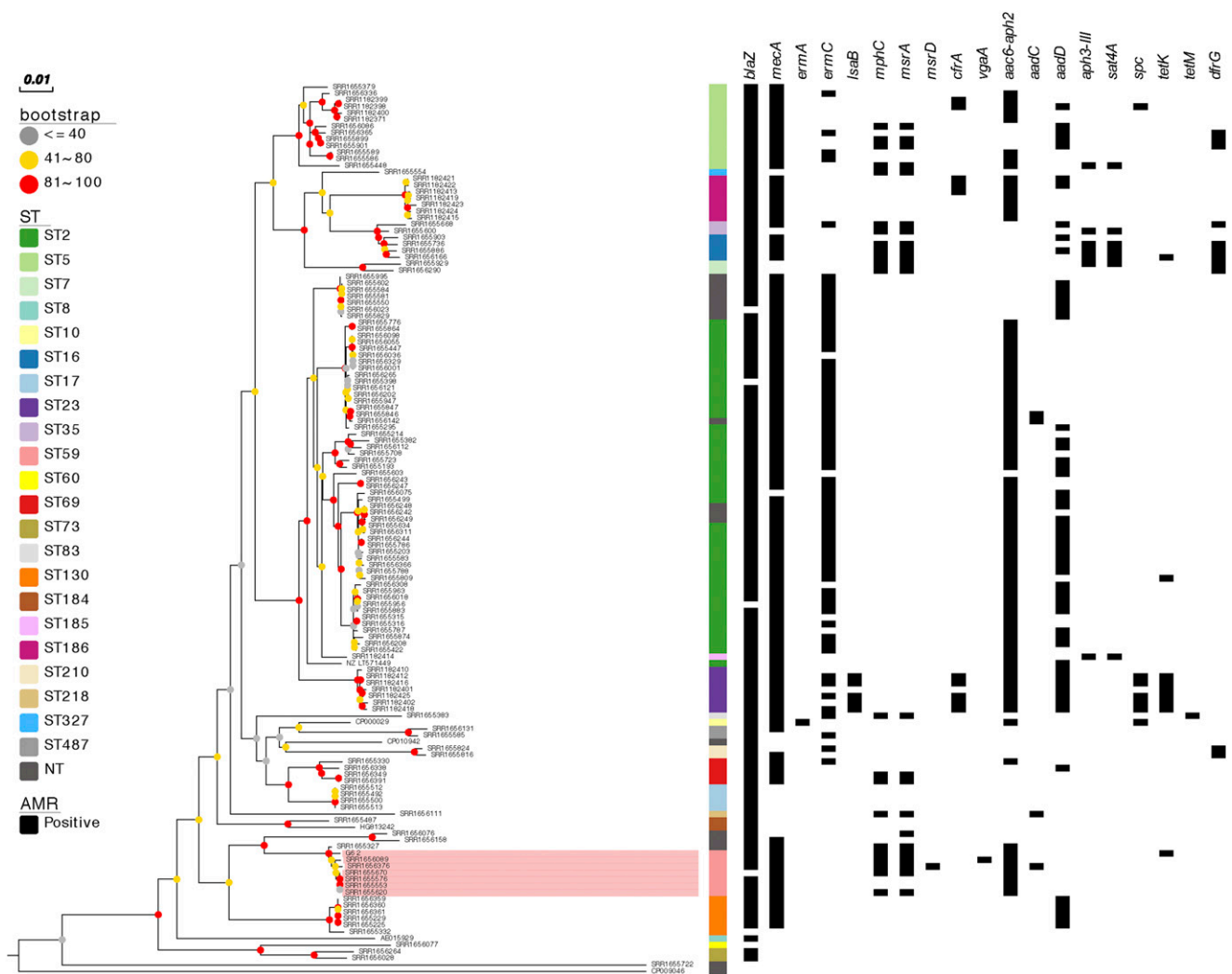


Figure 1 Core-genome mid-point rooted phylogenetic tree of 136 *S. epidermidis* isolates. The tree nodes are annotated with bootstrap value ranges based on 100 replicates. The tree is also annotated with the sequence type (ST) assignment and antimicrobial resistance gene (AMR) carriage. Gene names above the annotation are grouped in accordance with the corresponding antimicrobial class (beta-lactams: *blaZ*, *mecA*; macrolides, lincosamides and streptogramins: *ermA*, *ermC*, *lsaB*, *mphC*, *msrA*, *msrD*, *cfrA* and *vgaA*; aminoglycosides: *aac6-aph2*, *aadC*, *aadD*, *aph3-III*, *sat4A* and *spc*; tetracyclines: *tetK* and *tetM*; trimethoprim: *dfrG*). The ST59 cluster that contains the G6_2 strain is highlighted in pink.

might be successful in healthcare settings contribute to proliferation of subpopulations of two species (Méric *et al.* 2015).

Comparison of resistance determinant distribution revealed that the *S. epidermidis* G6_2 strain shared a common antibiotic resistance gene composition with other ST59 isolates, suggesting that the particular combination of antibiotic resistance genes found in the G6_2 strain is preserved across the ST59 lineage (Figure 1). All ST59 isolates harbored *aac-aph*, *blaZ* and *mecA* genes, and majority contained *mphC* and *msrA* genes, whereas *tetK* was uniquely found in *S. epidermidis* G6_2. The G6_2 strain also shared the *qacC* plasmid with other ST59 isolates as well as the SCC*mec* IV sequence but not full SCC*mec*-SCC composite island, which was not detected in any other analyzed *S. epidermidis* genome.

Functional genes uniquely found in *S. epidermidis* G6_2 compared with reference strains

Pan-genome analysis of the G6_2 strain and six *S. epidermidis* reference genomes revealed that 78 genes were unique to G6_2. After excluding genes found on plasmids, 64 chromosomally located genes were unique

to G6_2 strain. This included a number of SCC*mec*- and SCC-associated genes as well as some of the chromosomally inserted resistance genes such as *mphC*, *msrA*, *copZ-copA-csoR* operon and the additional copy of *cczD* genes.

Comparative analysis of virulence genes

Pathogenicity of *S. epidermidis* has been linked primarily with its capacity for biofilm formation. Biofilm formation occurs by initial attachment of bacteria on both biotic and abiotic surfaces, which further accumulates into multi-layered cell agglomerates. This facilitates the internalization and persistence of *S. epidermidis* species in the host cells. Strains that facilitate this feature are therefore considered more virulent (Becker *et al.* 2014). *S. epidermidis* carries a number of virulence determinants that have been associated with its ability to attach to biotic and abiotic surfaces as well as the various phases of biofilm formation. Analysis of virulence gene composition based on the VF database, revealed a number of such virulence determinants that were detected in all or majority of analyzed *S. epidermidis* isolates, including the G6_2 strain. This included the autolysin gene *atlE* (138/140), the cell wall associated fibronectin

■ **Table 2 Genotypic and phenotypic characterization of antibiotic resistance in *S. epidermidis* G6_2**

Product	Gene name	Accession number (Identity %)	Location	Function	Class of antibiotic	Antibiotics
Aminoglycoside-modifying enzymes	<i>aac(6′)-aph(2′′)</i>	M13771 (100)	plasmid	Aminoglycoside resistance	Aminoglycoside	Gentamycin streptomycin
β-lactamase	<i>blaZ</i>	AJ302698 (100)	plasmid	Beta-lactam resistance	Beta-lactam	Penicillin oxacillin Amoxicillin cefepime cefoxitin
Penicillin-binding protein 2a	<i>mecA</i>	AB505628 (100)	Chromosome	Beta-lactam resistance		
Fosfomycin resistance protein	<i>fosA</i>	ACHE01000077 (100)	Chromosome	Fosfomycin resistance	Phosphonic	Fosfomycin
Macrophage scavenger receptors	<i>msr(A)</i>	X52085 (98.98)	plasmid	Macrolide, Lincosamide and Streptogramin B resistance	Microlide	Erythromycin
Inactivating enzymes	<i>mph(C)</i>	AF167161 (100)	plasmid	Macrolide resistance		
Tetracycline efflux pump	<i>tet(K)</i>	U38428 (99.93)	plasmid	Tetracycline resistance	Tetracycline	Tetracycline
Isoleucyl RNA synthetase	<i>ileS</i>	—	—	Fusidic acid resistance	Fusidic acid	Fusidic acid
Elongation factor G	<i>fusA</i>	—	—	Monoxy-carbolic resistance	Monoxy-carbolic	Mupirocin

binding protein gene *ebh* (140/140), the elastin binding protein gene *ebp* (135/140), the fibrinogen binding protein genes *sdrG* (137/140) and *sdrH* (138/140), serine protease genes *sspA* (138/140) and *sspB* (138/140), lipase genes *geh* (139/140) and *lip* (138/140), and the nuclease gene *nuc* (138/140). The intercellular adhesion operon *icaADBC*, which is also associated with biofilm formation (Cramton *et al.* 1999), was variably distributed (87/140) and absent in the *S. epidermidis* G6_2 strain as well as the other ST59 isolates included in this analysis. This is in agreement with previous reports of clinical *S. epidermidis* ST59 isolates that revealed a biofilm negative phenotype (Li *et al.* 2009; Mendes *et al.* 2012; Miragaia *et al.* 2007).

In addition to the described biofilm formation-associated virulence determinants, majority of *S. epidermidis* isolates carried the hemolysin-beta gene *hlyB* (136/140), which was also present in the G6_2 strain. Less common was the delta hemolysin gene *hlyD* (41/140), also detected in the G6_2 strain although absent in most other ST59 isolates.

In conclusion, this study is the first analysis of the genome of *S. epidermidis* isolated from the general public environment and harboring a cassette of resistance genes to an array of antimicrobials. The comparison of *S. epidermidis* G6_2 genome with clinical reference strains revealed its antibiotic resistance and virulence gene arsenal. Resistance genes were carried on both bacterial chromosome and plasmids. We established that *S. epidermidis* G6_2 harbors 12 virulence genes, and delta hemolysin gene *hlyD* (41/140) is known to be detected in the G6_2 strain but absent in most other ST59 isolates. In addition, 9 antibiotic resistance determinants which are responsible for the resistance to 12 antibiotics, including streptomycin, gentamicin, penicillin, oxacillin, amoxicillin, cefoxitin, cefepime, erythromycin, fosfomycin, tetracycline, fusidic acid, mupirocin, have been identified in *S. epidermidis* G6_2. Additional whole genome sequence and comparative genomics analysis are warranted to further our understanding of the origin and evaluation of multidrug resistant isolates from different ecological niches.

ACKNOWLEDGMENTS

Genome sequencing was supported by Medical Research Council (MRC) partnership grant G1001787/1.

LITERATURE CITED

- Andrews, J. M., and R. A. Howe, 2011 BSAC standardized disc susceptibility testing method (Version 10). *J. Antimicrob. Chemother.* 66: 2726–2757. <https://doi.org/10.1093/jac/dkr359>
- Andrews, S., 2011 pp. 175–176 in *FastQC A Quality Control Tool for High Throughput Sequence Data*. Babraham Institute, Cambridge, UK.
- Bankevich, A., S. Nurk, D. Antipov, A. A. Gurevich, M. Dvorkin *et al.*, 2012 SPAdes: a new genome assembly algorithm and its applications to single-cell sequencing. *J. Comput. Biol.* 19: 455–477. <https://doi.org/10.1089/cmb.2012.0021>
- Becker, K., C. Heilmann, and G. Peters, 2014 Coagulase-negative staphylococci. *Clin. Microbiol. Rev.* 27: 870–926. <https://doi.org/10.1128/CMR.00109-13>
- Biswas, R. K., M. M. Kock, T. Adelowotan, W. Strasheim, T. G. Mahomed *et al.*, 2015 Draft genome sequences of five clinical methicillin-resistant *Staphylococcus aureus* isolates and a methicillin-resistant *Staphylococcus epidermidis* isolate. *Genome Announc.* 3: e00836–e15. <https://doi.org/10.1128/genomeA.00836-15>
- Chambers, H. F., 2005 Community-associated MRSA—resistance and virulence converge. *N. Engl. J. Med.* 352: 1485–1487. <https://doi.org/10.1056/NEJMe058023>
- Chaudhry, V., and P. B. Patil, 2016 Genomic investigation reveals evolution and lifestyle adaptation of endophytic *Staphylococcus epidermidis*. *Sci. Rep.* 6: 19263. <https://doi.org/10.1038/srep19263>
- Chen, L., D. Zheng, L. Bo, Y. Jian, and J. Qi, 2016 VFDB 2016: hierarchical and refined dataset for big data analysis—10 years on. *Nucleic Acids Res.* 44: D694–D697. <https://doi.org/10.1093/nar/gkv1239>
- Conlan, S., H. H. Kong, and J. A. Segre, 2012 Species-level analysis of DNA sequence data from the NIH human microbiome project. *PLoS One* 7: e47075. <https://doi.org/10.1371/journal.pone.0047075>
- Cramton, S. E., C. Gerke, N. F. Schnell, W. W. Nichols, and F. Gotz, 1999 The intercellular adhesion (*Ica*) locus is present in *Staphylococcus aureus* and is required for biofilm formation. *Infect. Immun.* 67: 5427–5433.
- Croucher, N. J., A. J. Page, T. R. Connor, A. J. Delaney, J. A. Keane *et al.*, 2015 Rapid phylogenetic analysis of large samples of recombinant bacterial whole genome sequences using gubbins. *Nucleic Acids Res.* 43: e15. <https://doi.org/10.1093/nar/gkv1196>
- Davenport, K. W., H. E. Daligault, T. D. Minogue, K. A. Bishoplilly, S. M. Broomall *et al.*, 2014 Complete genome assembly of *Staphylococcus epidermidis* AmMS 205. *Genome Announc.* 2: e01059–e14. <https://doi.org/10.1128/genomeA.01059-14>

- DeLeo, F. R., M. Otto, B. N. Kreiswirth, and H. F. Chambers, 2010 Community-associated methicillin-resistant *Staphylococcus aureus*. *Lancet* 375: 1557–1568. [https://doi.org/10.1016/S0140-6736\(09\)61999-1](https://doi.org/10.1016/S0140-6736(09)61999-1)
- Gill, S. R., D. E. Fouts, G. L. Archer, E. F. Mongodin, R. T. Debooy *et al.*, 2005 Insights on evolution of virulence and resistance from the complete genome analysis of an early methicillin-resistant *Staphylococcus aureus* strain and a biofilm-producing methicillin-resistant *Staphylococcus epidermidis* strain. *J. Bacteriol.* 187: 2426–2438. <https://doi.org/10.1128/JB.187.7.2426-2438.2005>
- Gupta, S. K., B. R. Padmanabhan, S. M. Diene, R. Lopez-Rojas, M. Kempf *et al.*, 2014 ARG-ANNOT, a new bioinformatic tool to discover antibiotic resistance genes in bacterial genomes. *Antimicrob Agents Ch.* 58: 212–220. <https://doi.org/10.1128/AAC.01310-13>
- Hanssen, A., G. Kjeldsen, and J. U. Ericson Sollid, 2004 Local variants of staphylococcal cassette chromosome *mec* in sporadic methicillin-resistant *Staphylococcus aureus* and methicillin-resistant coagulase-negative staphylococci: evidence of horizontal gene transfer? *Antimicrob Agents Ch.* 48: 285–296. <https://doi.org/10.1128/AAC.48.1.285-296.2004>
- Haubold, B., F. Klötzl, and P. Pfaffelhuber, 2015 Andi: fast and accurate estimation of evolutionary distances between closely related genomes. *Bioinformatics* 31: 1169–1175. <https://doi.org/10.1093/bioinformatics/btu815>
- Inouye, M., H. Dashnow, L. A. Raven, M. B. Schultz, B. J. Pope *et al.*, 2014 SRST2: rapid genomic surveillance for public health and hospital microbiology labs. *Genome Med.* 6: 90. <https://doi.org/10.1186/s13073-014-0090-6>
- Jyh, L., I. R. Monk, S. J. Pidot, S. Singh, C. Kyl *et al.*, 2016 Functional analysis of the first complete genome sequence of a multidrug resistant sequence Type 2 *Staphylococcus epidermidis*. *Microb. Genom.* 2: e000077. <https://doi.org/10.1099/mgen.0.000077>
- Kondo, Y., T. Ito, X. X. Ma, S. Watanabe, B. N. Kreiswirth *et al.*, 2007 Combination of multiplex PCRs for staphylococcal cassette chromosome *mec* type assignment: rapid identification system for *mec*, *ccr*, and major differences in junkyard regions. *Antimicrob Agents Ch.* 51: 264–274. <https://doi.org/10.1128/AAC.00165-06>
- Larnersvensson, H., P. Worning, M. D. Bartels, H. L. Hestbjerg, K. Boye *et al.*, 2013 Complete genome sequence of *Staphylococcus aureus* strain M1, a unique t024–ST8-IVa danish methicillin-resistant *S. aureus* clone. *Genome Announc.* 1: S69–S82.
- Li, M., X. Wang, Q. Gao, and Y. Lu, 2009 Molecular characterization of *Staphylococcus epidermidis* strains isolated from a teaching hospital in Shanghai, China. *J. Med. Microbiol.* 58: 456–461. <https://doi.org/10.1099/jmm.0.007567-0>
- Mendes, R. E., L. M. Deshpande, A. J. Costello, and D. J. Farrell, 2012 Molecular epidemiology of *Staphylococcus epidermidis* clinical isolates from U.S. hospitals. *Antimicrob Agents Ch.* 56: 4656–4661. <https://doi.org/10.1128/AAC.00279-12>
- Méric, G., M. Miragaia, M. de Been, K. Yahara, B. Pascoe *et al.*, 2015 Ecological overlap and horizontal gene transfer in *Staphylococcus aureus* and *Staphylococcus epidermidis*. *Genome Biol. Evol.* 7: 1313–1328. <https://doi.org/10.1093/gbe/evv066>
- Miragaia, M., J. A. Carriço, J. C. Thomas, I. Couto, M. C. Enright *et al.*, 2008 Comparison of molecular typing methods for characterization of *Staphylococcus epidermidis*: proposal for clone definition. *J. Clin. Microbiol.* 46: 118–129. <https://doi.org/10.1128/JCM.01685-07>
- Miragaia, M., J. C. Thomas, I. Couto, M. C. Enright, and H. de Lencastre, 2007 Inferring a population structure for *Staphylococcus epidermidis* from multilocus sequence typing Data. *J. Bacteriol.* 189: 2540–2552. <https://doi.org/10.1128/JB.01484-06>
- Mkrtchyan, H. V., C. A. Russell, N. Wang, and R. R. Cutler, 2013 Could public restrooms be an environment for bacterial resistomes? *PLoS One* 8: e54223. <https://doi.org/10.1371/journal.pone.0054223>
- Morfin-Otero, R., M. A. Martínez-Vázquez, D. López, E. Rodríguez-Noriega, and E. Garza-González, 2012 Isolation of rare coagulase-negative isolates in immunocompromised patients: *Staphylococcus gallinarum*, *Staphylococcus pettenkoferi* and *Staphylococcus pasteurii*. *Ann. Clin. Lab. Sci.* 42: 182–185.
- Okazaki, M., K. Ohkusu, H. Hata, H. Ohnishi, K. Sugahara *et al.*, 2009 *Mycobacterium Kyorinense* sp. nov., a novel, slow-growing species, related to *Mycobacterium celatum*, isolated from human clinical specimens. *IJSEM* 59: 1336–1341. <https://doi.org/10.1099/ijms.0.000760-0>
- Oliveira, D. C., and A. L. H. Tomasz, 2002 Secrets of success of a human pathogen: molecular evolution of pandemic clones of methicillin-resistant *Staphylococcus aureus*. *Lancet Infect. Dis.* 2: 180–189. [https://doi.org/10.1016/S1473-3099\(02\)00227-X](https://doi.org/10.1016/S1473-3099(02)00227-X)
- Ondov, B. D., N. H. Bergman, and A. M. Phillippy, 2011 Interactive metagenomic visualization in a web browser. *BMC Bioinformatics* 12: 385. <https://doi.org/10.1186/1471-2105-12-385>
- Otto, M., 2013a Coagulase-negative staphylococci as reservoirs of genes facilitating MRSA infection: staphylococcal commensal species such as *Staphylococcus epidermidis* are being recognized as important sources of genes promoting MRSA colonization and virulence. *BioEssays* 35: 4–11. <https://doi.org/10.1002/bies.201200112>
- Otto, M., 2013b Staphylococcal infections: mechanisms of biofilm maturation and detachment as critical determinants of pathogenicity. *Annu. Rev. Med.* 64: 175–188. <https://doi.org/10.1146/annurev-med-042711-140023>
- Page, A. J., C. A. Cummins, M. Hunt, V. K. Wong, S. Reuter *et al.*, 2015 Roary: rapid large-scale prokaryote pan genome analysis. *Bioinformatics* 31: 3691–3693. <https://doi.org/10.1093/bioinformatics/btv421>
- Quail, M. A., I. Kozarewa, F. Smith, A. Scally, P. J. Stephens *et al.*, 2008 A large genome center’s improvements to the illumina sequencing system. *Nat. Methods* 5: 1005–1010. <https://doi.org/10.1038/nmeth.1270>
- Roach, D. J., J. N. Burton, C. Lee, B. Stackhouse, S. M. Butler-Wu *et al.*, 2015 A year of infection in the intensive care unit: prospective whole genome sequencing of bacterial clinical isolates reveals cryptic transmissions and novel microbiota. *PLoS Genet.* 11: e1005413 (erratum: *PLoS Genet.* 13: e1006724). <https://doi.org/10.1371/journal.pgen.1005413>
- Savijoki, K., A. Iivanainen, P. Siljamäki, P. K. Laine, L. Paulin *et al.*, 2014 Genomics and proteomics provide new insight into the commensal and pathogenic lifestyles of bovine- and human-associated *Staphylococcus epidermidis* strains. *J. Proteome Res.* 13: 3748–3762. <https://doi.org/10.1021/pr500322d>
- Seemann, T., 2014 Prokka: rapid prokaryotic genome annotation. *Bioinformatics* 30: 2068–2069. <https://doi.org/10.1093/bioinformatics/btu153>
- Stamatakis, A., 2014 RAXML Version 8: A tool for phylogenetic analysis and post-analysis of large phylogenies. *Bioinformatics* 30: 1312–1313. <https://doi.org/10.1093/bioinformatics/btu033>
- Tewhey, R., B. Gu, T. Kelesidis, C. Charlton, A. Bobenchik *et al.*, 2014 Mechanisms of linezolid resistance among coagulase-negative *Staphylococci* determined by whole-genome sequencing. *MBio* 5: e00894–e14. <https://doi.org/10.1128/mBio.00894-14>
- Thomas, J. C., M. R. Vargas, M. Miragaia, S. J. Peacock, G. L. Archer *et al.*, 2006 Improved multilocus sequence typing scheme for *Staphylococcus epidermidis*. *J. Clin. Micro.* 45: 616–619. <https://doi.org/10.1128/JCM.01934-06>
- Vuong, C., S. Kocianova, Y. Yao, A. B. Carmody, and M. Otto, 2004 Increased colonization of indwelling medical devices by quorum-sensing mutants of *Staphylococcus epidermidis* in vivo. *J. Infect. Dis.* 190: 1498–1505. <https://doi.org/10.1086/424487>
- Wood, D. E., and S. L. Salzberg, 2014 Kraken: ultrafast metagenomic sequence classification using exact alignments. *Genome Biol.* 15: R46. <https://doi.org/10.1186/gb-2014-15-3-r46>
- Xu, Z., V. M. Hermine, and R. R. Cutler, 2015 Antibiotic resistance and *mecA* characterization of coagulase-negative staphylococci isolated from three hotels in London, UK. *Front. Microbiol.* 9: 947.
- Zhang, H., S. Gao, M. J. Lercher, S. Hu, and W. Chen, 2012 EvolView, an online tool for visualizing, annotating and managing phylogenetic trees. *Nucleic Acids Res.* 40: W569–W572. <https://doi.org/10.1093/nar/gks576>
- Zhang, Y., S. Ren, H. Li, Y. Wang, G. Fu *et al.*, 2003 Genome-based analysis of virulence genes in a non-biofilm-forming *Staphylococcus epidermidis* strain (ATCC 12228). *Mol. Microbiol.* 49: 1577–1593. <https://doi.org/10.1046/j.1365-2958.2003.03671.x>

Communicating editor: R. Kulathinal