



THE UNIVERSITY *of* EDINBURGH

Edinburgh Research Explorer

Body mass index relates weight to height differently in women and older adults

Citation for published version:

Sperrin, M, Marshall, AD, Higgins, V, Renehan, A & Buchan, IE 2016, 'Body mass index relates weight to height differently in women and older adults', *Journal of Public Health*, vol. 38, no. 3, pp. 607-613. <https://doi.org/10.1093/pubmed/fdv067>

Digital Object Identifier (DOI):

[10.1093/pubmed/fdv067](https://doi.org/10.1093/pubmed/fdv067)

Link:

[Link to publication record in Edinburgh Research Explorer](#)

Document Version:

Publisher's PDF, also known as Version of record

Published In:

Journal of Public Health

Publisher Rights Statement:

© The Author 2015. Published by Oxford University Press on behalf of Faculty of Public Health.

This is an Open Access article distributed under the terms of the Creative Commons Attribution License (<http://creativecommons.org/licenses/by/4.0/>), which permits unrestricted reuse, distribution, and reproduction in any medium, provided the original work is properly cited.

General rights

Copyright for the publications made accessible via the Edinburgh Research Explorer is retained by the author(s) and / or other copyright owners and it is a condition of accessing these publications that users recognise and abide by the legal requirements associated with these rights.

Take down policy

The University of Edinburgh has made every reasonable effort to ensure that Edinburgh Research Explorer content complies with UK legislation. If you believe that the public display of this file breaches copyright please contact openaccess@ed.ac.uk providing details, and we will remove access to the work immediately and investigate your claim.



Body mass index relates weight to height differently in women and older adults: serial cross-sectional surveys in England (1992–2011)

Matthew Sperrin¹, Alan D. Marshall², Vanessa Higgins², Andrew G. Renehan³, Iain E. Buchan¹

¹Health eResearch Centre, Farr Institute, University of Manchester, Manchester M13 9PL, UK

²Cathie Marsh Institute for Social Research, School of Social Sciences, University of Manchester, Manchester, UK

³Institute of Cancer Sciences, University of Manchester, Manchester, UK

Address correspondence to Matthew Sperrin, E-mail: matthew.sperrin@manchester.ac.uk

ABSTRACT

Background Body mass index (BMI) tends to be higher among shorter adults, especially women. The dependence of BMI–height correlation on age and calendar time may inform us about temporal determinants of BMI.

Methods Series of cross-sectional surveys: Health Survey for England, 1992–2011. We study the Benn Index, which is the coefficient in a regression of $\log(\text{weight})$ on $\log(\text{height})$. This is adjusted for age, gender and calendar time, allowing for non-linear terms and interactions.

Results By height quartile, mean BMI decreased with increasing height, more so in women than in men ($P < 0.001$). The decrease in mean BMI in the tallest compared with the shortest height quartile was 0.77 in men (95% CI 0.69, 0.86) and 1.98 in women (95% CI 1.89, 2.08).

Regression analysis of $\log(\text{weight})$ on $\log(\text{height})$ revealed that the inverse association between BMI and height was more pronounced in older adults and stronger in women than in men, with little change over calendar time.

Conclusions Unlike early childhood, where taller children tend to have higher BMI, adults, especially women and older people, show an inverse BMI–height association. BMI is a heterogeneous measure of weight-for-height; height may be an important and complex determinant of BMI trajectory over the life course.

Keywords adiposity, body height, body mass index, body weight, health survey for England, stature, weight for height

Introduction

Body mass index (BMI) relates weight to height in a normalized index that was first published in Quetelet's 18th Century treatise on 'the average man'.¹ BMI is defined as weight (in kilograms) divided by height (in metres) squared. As an individual's height and weight can be readily and inexpensively measured, BMI has become a popular heuristic approximation for body fatness in epidemiology and clinical practice. The World Health Organization defined BMI-based fatness categories of underweight (BMI $< 18.5 \text{ kg/m}^2$), normal weight (18.5–24.9 kg/m^2), overweight (25.0–29.9 kg/m^2) and obese ($\geq 30.0 \text{ kg/m}^2$).² Excess body weight (overweight and obese) is a major risk factor for mortality and morbidity from cardiovascular disease,³ type 2 diabetes⁴ and incident cancer,^{5,6} causing 3 million deaths each year worldwide.⁷

National surveys show that adiposity, as measured by BMI, has increased over the past decades in many populations across the world.⁸ However, the rising trends have slowed down since approximately 2000 in England⁹ and other countries.^{8,10}

BMI is not a measure of body fat amount or distribution. Much debate has argued that other anthropometric measures, such as waist circumference and waist-to-hip ratio, are better predictors of disease outcome compared with BMI,^{11,12}

Matthew Sperrin, Lecturer

Alan D. Marshall, Lecturer

Vanessa Higgins, Senior Research Fellow

Andrew G. Renehan, Professor

Iain E. Buchan, Professor

though recent meta-analyses suggest that these measures are no more informative than BMI for cardiovascular disease³ or type 2 diabetes.⁴ In adult population studies, there is little debate about the relationship of weight to height, but this should be questioned where height is a risk factor for disease, for example, in breast cancer among women.¹³ When using BMI, it is commonly assumed that:¹⁴ (i) BMI is strongly correlated with weight, but independent of height; and (ii) BMI correctly captures the relationship between weight and height. This may not be true, particularly at earlier points in the life course. We showed that BMI had been rising more in the taller (faster growing) 3 year olds than in their shorter peers, suggesting a causal drive to increasing adiposity in young children that involves both growth and appetite.¹⁵ Others showed similar non-independence of height and BMI among 7–12 year olds.¹⁶

In 1971, Benn described BMI's fundamental statistical relationship as (Weight/Height^{*P*}) where the height power *P* (termed the *Benn Index*) is estimated by log–log regression.¹⁷ Specific examples for the value of the Benn Index include the Ponderal Index (or Rohrer Index)¹⁸ where *P* = 3, the Human Body Shape Index where *P* = 2.8,¹⁹ and the standard BMI calculation or Quetelet index where *P* = 2. Many studies in the paediatric literature have shown that the value of the Benn Index varies with gestational age²⁰ and during childhood development.^{21–23} Research in adults suggests that BMI is negatively correlated with height, especially in women.¹⁴ In this study, we seek to extend previous research in two ways. First, we examine the impact of age on the BMI–height relationship between ages 16 and 75 years. Second, recognizing the increasing prevalence of overweight and obesity in England over the past two decades,²⁴ we explore whether or not the BMI–height relationship has changed over this time period. Methodologically, we extend to an adult population our analyses of the BMI–height relationship in young children¹⁵ and determine whether this relationship differs by gender, by age group, and over time, and explore for influences of potential confounders, such as smoking and income.

Methods and procedures

Data source

The Health Survey for England (HSE) is a series of annual cross-sectional surveys, piloted in 1991 and run in full since 1992, to monitor the health of the English population. The survey methodology follows a multistage, stratified probability sampling design and originally had a sample of 4000, but this was increased to around 16 000 in 1994. A fresh sample of participants is invited each year by selecting private

households at random in a geographically dispersed sampling frame. Socio-demographic information and height/weight measurements were collected using standardized procedures by trained interviewers at the homes of participants. Weight is measured to the nearest 100 g using electronic scales after removal of shoes or bulky clothing (participants were not weighed if they were pregnant, unsteady on their feet or chair-bound). Height, to the nearest millimetre, was measured using a portable stadiometer. Previous surveys reported on average 70% of households agreed to an interview, and BMI was available from around 90% of those interviewed—with some variation by year and region.^{25,26}

We have previously considered missingness of height/weight/BMI values in HSE and shown that there is slightly more missingness in later survey years, but there are no discernible differences between missing and non-missing cases for age, socioeconomic status, educational status, smoking status and income classes, i.e. it is robust to assume that BMI values are missing completely at random within gender.⁹

Data capture and inclusion criteria

We created a Health Survey for England dataset from 1992 to 2011, available for download from <http://ukdataservice.ac.uk>. We included only individuals where both a valid height and weight measurement were recorded. We restricted the sample to represent an adult population that we defined as age ≥ 16 and < 75 years. Those who were considered by the interviewer to have unreliable measurements were excluded from the analysis. We excluded 'boost samples' and did not apply survey weights, as these were only introduced in 2003, and the HSE is generally believed to be representative without applying these weights. We extracted the core variables of person identifier, year, age and validated (with height and weight) BMI, together with smoking status and equivalized household income for sensitivity analysis.

Statistical analyses

The relationship between height group (by quartile) and BMI was first explored graphically by gender and calendar time; simple regressions were used to assess the dependence of BMI on height, stratified by gender. An F test was used to test for an interaction between height quartile and gender in a regression model with BMI as the outcome and height quartile, gender, and their interaction as predictors.

We then used a more complex regression model to investigate interactions and non-linear effects, in which $\log(\text{weight})$ was taken as the response and regressed on $\log(\text{height})$ as a continuous variable. We fitted separate models for males and females; we corrected for age and calendar time and allowed

interactions between them. The variable $\log(\text{height})$ was constrained to be linear, but age and calendar time were allowed to have non-linear effects. The key output was the $\log(\text{height})$ coefficient—the Benn Index—which can vary according to the other covariates through its interactions.

The model fitting procedure was as follows. For each gender, we first fitted a model constrained to be linear in $\log(\text{height})$, with fractional polynomial terms²⁷ for age, calendar time and the interaction between age and calendar time. The choice of fractional polynomial terms was made using the iterative procedure of Sauerbrei and Royston.²⁸ We then considered potential interaction terms between $\log(\text{height})$ and each selected fractional polynomial term for inclusion in the model, using forward selection. Analyses were carried out using R,²⁹ with fractional polynomials fitted using the *mfp* package.³⁰

Results

Exploratory analyses

Table 1 shows demographic characteristics for each year of the HSE (1992–2011). As previously reported, we observed

that the mean BMI and mean age increased per survey year in men and women, with this increase slowing down after 2001.⁹ Mean height increased per survey year in men (0.044 cm per year, $P < 0.001$) and in women (0.033 cm per year, $P < 0.001$); see Supplementary data, Figure S1. The correlation between height and BMI is $\rho = -0.07$ in men and $\rho = -0.14$ in women; more details of correlations between height, weight and BMI over time are given in Supplementary data, Table S1.

BMI trends over time by height group (in quartiles)

Figure 1 shows the rise in BMI that occurred between 1992 and 2011 for both men and women, stratified by height quartile. Women's height groups have a much larger and more consistent separation of their BMI trajectories than men. Tall women had lower BMI, on average, compared with short women. For the tallest quartile of men compared with the shortest quartile, mean BMI was 0.77 kg/m^2 (95% CI [0.69, 0.86], $P < 0.001$) lower; for the taller women, the corresponding difference in mean BMI was more than two and a half times larger at 1.98 kg/m^2 (95% CI [1.89, 2.08], $P < 0.001$);

Table 1 Demographics in the Health Survey for England dataset, after restricting to individuals with valid BMI measurements. Where appropriate these are given in the form 'mean (standard deviation)'

Year	Men						Women			
	Sample size	% male	BMI	Weight (kg)	Height (cm)	Age	BMI	Weight (kg)	Height (cm)	Age
1992	6200	48	25.7 (4.0)	78.7 (13.3)	174.9 (7.2)	42.9 (16.4)	25.4 (5.1)	66.3 (13.7)	161.6 (6.6)	43.2 (16.5)
1993	14 333	48	25.9 (3.9)	79.3 (13.0)	174.7 (7.1)	43.1 (16.2)	25.7 (4.9)	67.1 (13.0)	161.6 (6.6)	43.6 (16.3)
1994	13 706	47	26.0 (3.9)	79.6 (13.2)	175.0 (7.2)	43.0 (16.3)	25.8 (5.0)	67.3 (13.4)	161.6 (6.7)	43.7 (16.5)
1995	13 564	47	26.1 (3.9)	79.9 (13.1)	174.8 (7.0)	43.6 (16.2)	25.9 (5.0)	67.3 (13.1)	161.3 (6.4)	43.6 (16.3)
1996	14 089	47	26.3 (4.0)	80.4 (13.5)	174.7 (7.1)	43.6 (16.1)	26.0 (4.9)	67.6 (13.1)	161.4 (6.5)	43.7 (16.2)
1997	7466	47	26.5 (4.2)	81.0 (13.9)	174.8 (7.0)	43.4 (15.9)	26.2 (5.4)	68.2 (14.2)	161.4 (6.5)	43.6 (15.9)
1998	13 365	47	26.5 (4.2)	81.2 (13.8)	174.8 (7.1)	43.6 (16.0)	26.4 (5.3)	68.8 (14.1)	161.5 (6.5)	43.8 (16.0)
1999	6478	47	26.5 (4.3)	81.1 (14.5)	174.8 (7.1)	44.1 (16.0)	26.4 (5.3)	68.6 (14.2)	161.4 (6.6)	43.6 (15.8)
2000	6466	47	26.9 (4.3)	82.1 (14.3)	174.8 (7.1)	43.7 (15.9)	26.5 (5.5)	69.2 (14.5)	161.5 (6.5)	44.4 (15.6)
2001	12 800	46	27.0 (4.4)	82.8 (14.4)	175.0 (7.0)	44.6 (16.0)	26.8 (5.5)	69.8 (14.5)	161.6 (6.5)	44.3 (15.8)
2002	6033	46	26.9 (4.6)	82.6 (15.1)	175.1 (7.0)	43.6 (16.0)	26.7 (5.5)	69.8 (14.6)	161.7 (6.5)	44.3 (16.0)
2003	12 170	46	27.1 (4.5)	83.2 (14.9)	175.0 (7.0)	45.0 (16.0)	26.8 (5.6)	70.0 (14.9)	161.6 (6.5)	44.9 (15.9)
2004	5162	44	27.3 (4.5)	83.8 (15.2)	175.1 (7.2)	45.7 (16.1)	26.9 (5.5)	70.4 (14.7)	161.8 (6.5)	46.0 (15.7)
2005	5910	46	27.1 (4.6)	83.6 (15.1)	175.4 (7.2)	44.8 (16.1)	27.0 (5.7)	70.7 (15.1)	161.8 (6.5)	44.7 (15.6)
2006	11 139	46	27.5 (4.6)	84.4 (15.3)	175.2 (7.2)	46.1 (16.0)	27.0 (5.6)	70.6 (15.0)	161.9 (6.6)	45.5 (15.8)
2007	5477	46	27.3 (4.8)	84.1 (15.7)	175.4 (7.2)	45.7 (16.2)	26.9 (5.4)	70.4 (14.4)	161.8 (6.5)	45.7 (15.8)
2008	11 814	46	27.4 (4.7)	84.3 (15.5)	175.4 (7.2)	45.5 (16.2)	27.0 (5.7)	70.8 (15.1)	161.9 (6.5)	45.4 (16.1)
2009	3654	47	27.3 (4.7)	84.2 (15.3)	175.5 (7.2)	46.4 (16.5)	27.2 (5.9)	71.2 (15.3)	161.9 (6.6)	45.6 (16.2)
2010	6378	45	27.7 (4.8)	85.5 (16.1)	175.4 (7.0)	46.4 (16.3)	27.4 (6.0)	71.9 (15.9)	162.2 (6.7)	45.7 (15.7)
2011	6436	45	27.5 (4.8)	84.7 (15.9)	175.6 (7.2)	46.4 (16.0)	27.2 (5.8)	71.6 (15.7)	162.2 (6.6)	45.8 (16.0)
Total	182 640	47	26.7 (4.4)	81.9 (14.5)	175.0 (7.1)	44.4 (16.2)	26.5 (5.4)	69.1 (14.4)	161.6 (6.5)	44.4 (16.1)

Source: Authors' own calculations based on the Health Survey for England (1992–2011).



Fig. 1 English mean BMI by height quartile from 1992 to 2011. Left: men; right: women. Q1 to Q4 as Quartile 1 (shortest) to Quartile 4 (tallest).

Table 2 Reduction in mean BMI by height quartile, stratified by gender (Quartile 1 is the baseline, and the mean BMI is presented for this category)

Height quartile	Point estimate (95% CI) for reduction in mean BMI (kg/m ²)	
	Men	Women
1 (shortest)	Baseline: 27.09 (27.03, 27.15)	Baseline: 27.50 (27.43, 27.57)
2	-0.18 (-0.26, -0.10)	-0.83 (-0.92, -0.73)
3	-0.47 (-0.55, -0.38)	-1.33 (-1.42, -1.23)
4 (tallest)	-0.77 (-0.86, -0.69)	-1.98 (-2.08, -1.89)

Source: Authors' own calculations based on the Health Survey for England (1992–2011).

results for all of the height groups are detailed in Table 2. The F test on the combined regression model demonstrated that the interaction between gender and height quartile was statistically highly significant ($P < 0.001$). Sensitivity analyses of these BMI differences stratified by smoking status and income are shown in Supplementary data, Table S2.

Trends in Benn Index

We then fit the $\log(\text{weight})$ against $\log(\text{height})$ regression models. Technical details of final fitted models are given in Supplementary data, Tables S3 and S4. We examined the weight–height relationships over age and gender (Fig. 2)—setting the year to 2011. The Benn Index was slightly < 2 in men, and much < 2 in women. This suggests a stronger gradient between BMI and height in women (taller women tending

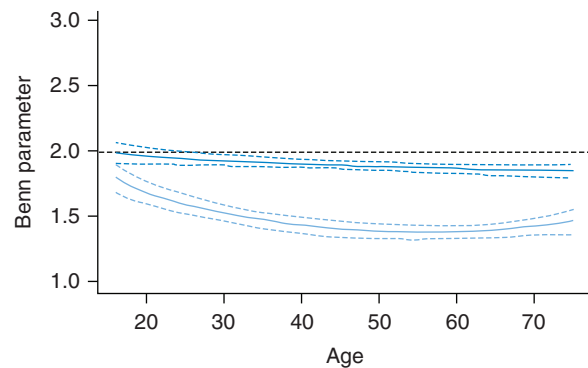


Fig. 2 Benn parameter (relative change in predicted weight when height is increased by 1%) for various ages. Top line (dark blue), males; bottom line (light blue), females. Solid line, expected change; dashed line, 95% confidence limits. Interpretation: a Benn Index < 2 implies taller people tend to have lower BMI.

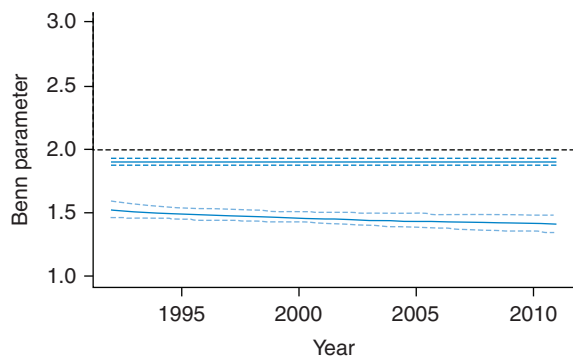


Fig. 3 Benn parameter (relative change in predicted weight when height is increased by 1%) over calendar time. Top line (dark blue), males; bottom line (light blue), females. Solid line, expected change; dashed line, 95% confidence limits. Interpretation: a Benn Index <2 implies taller people tend to have lower BMI.

to have lower BMI). In men, the Benn Index decreased further from 2 with increasing age (linear trend, $P = 0.005$), suggesting a strengthening of the above relationship with age. In women, the Benn Index followed a quadratic relationship with age ($P < 0.001$), with the relationship strongest around middle age.

We then explored period effects of the weight–height relationships (Fig. 3)—setting age to 45. There is no change over calendar time in the male Benn Index (the term for this is selected out of the model). There is a slight decrease of the Benn Index over time for women; however, a test of linear trend is not significant ($P = 0.22$).

Sensitivity analyses

We performed sensitivity analyses taking account of the potential influences of smoking and income status (Supplementary data, Figures S2 and S3). Patterns were generally similar, although Benn indices were slightly larger in current smokers, particularly in men. There was little effect of income status on Benn indices.

Discussion

Main finding of this study

Height is inversely associated with BMI in adults. This relationship is larger in women and has generally increased with age. We established this with data from the Health Surveys for England (1992–2011) and analysis of the relationship between BMI and height for adults (aged 16–75) using regressions with $\log(\text{weight})$ as the response and $\log(\text{height})$ as the predictor, with age, gender and calendar time as additional predictors, allowing for interactions and non-linear terms, and exploring the influence of smoking and other potential confounders.

What is already known on this topic

BMI is a popular approximation of body fatness, purporting to correct for the relationship between weight and height. However, in pre-pubertal children, there is a positive association between BMI and height (taller = higher BMI),^{15,16} while in adults, there is a negative association between BMI and height, particularly in women.¹⁴ The relationship between BMI and height has been studied in detail in children,^{20–23} for adults, it is not clear how the BMI–height association relates to age, or whether it has changed over time.

What this study adds

The excess of weight-for-height among shorter people is negligible in early adulthood (16–20 years), particularly in men, then increases with age. This suggests an inversion of the BMI–height relationship around puberty. There is little evidence of this changing over calendar time, despite the growing levels of obesity.

Examining changes over time in BMI at the population level conflates not only the constituent fat and lean mass factors but also the dynamics of linear growth, stature, adiposity and skeletal musculature. To understand the implications of our findings, the time trends in linear growth and stature must be considered alongside time trends in adiposity, with a life-course perspective.

In early life, greater maternal pregnancy weight gain,³¹ higher birth weight³² and faster growth (as measured by taller stature)^{15,16} are associated with higher BMI before puberty. Then higher BMI is associated with earlier onset and completion of puberty and an impaired height gain during puberty.^{33,34} One explanatory mechanism is higher adiposity driving skeletal maturation through its effects on oestrogen metabolism, which applies to boys³⁵ as well as girls. However, there is a divergence between the sexes around puberty in their linear growth and overall development in relation to adiposity.^{36,37} The eventual effects of pubertal overweight and obesity on adult attained height are inconsistent in boys, but in girls there appears to be an inversion of the BMI–height association.³⁸ So, at the population level, successive cohorts experiencing an increasingly obesogenic environment might show: (i) increasing sexual dimorphism in the BMI–height association and (ii) increasing average attained height if rising determinants of early growth override the accelerated skeletal maturation of high adiposity. Our results are consistent with this explanation. There is, however, a complex nexus of different causal pathways to consider, which is beyond the scope of this research.

In clinical terms, our findings add further caution to the use of BMI as a proxy for adiposity, as it has different

meanings between adults of different statures and between the sexes, with an underlying dynamic that most likely applies across the life course.

In public health terms, we have shown that the comparison of weight-for-height between heterogeneous groups, and over time, may require more detailed statistical modelling than simple mean BMI contrasts. Subject to further research, there may be a need for more targeting/adaptation of healthy weight promotion by sex and stature.

Population summaries of BMI represent a heterogeneous mix of weight-for-height relationships that cannot be reduced to Quetelet's kg/m^2 . The bases of these relationships may vary across the life course and by sex. Exploring the nexus of potential causality in the BMI–height associations may reveal some useful targets for tackling obesity.

Based on the findings here and our previous findings in young children,^{15,39} we hypothesize that the BMI trajectory is dependent on height, with taller individuals gaining more weight in childhood and shorter individuals accumulating more weight throughout the life course. This will need to be tested in cohorts with height and weight measured from childhood to old age, ideally at different phases of calendar time with a variety of obesogenic environments acting across the life course. There is a need for more collective, cross-cohort research in this regard.

Limitations of this study

A limitation of the study is that the data are cross-sectional only; therefore, we cannot study how BMI changes within individuals. In particular, we cannot easily distinguish empirically from our data whether differences in the BMI and height relationship by age are a result of age, period or cohort. We are also basing our analysis on subsamples where BMI measures were available; this may introduce bias if BMI measures are not missing at random; however, we have previously proved this to be unlikely with data from this survey series.⁹

From serial cross-sectional health surveys, we cannot determine whether the findings in this work and elsewhere represent evidence of a causal relationship between height and adiposity, or simply reflect the heterogeneity of BMI as an adiposity measure (across populations, the life course and calendar time). In addition, the direction of possible causality in BMI–height relations may not be the same across the life course.

However, a strength is the use of a large annual survey with comparable sampling and measurement of the English general population over the past two decades.²⁶ We have also used refined statistical modelling techniques to examine the changing relationships between height and BMI according to age, gender and calendar time.

Conclusion

BMI does not reflect the same adjustment of weight to height between the sexes or across age groups. This heterogeneity of BMI must be considered in public health research and surveillance. Longitudinal studies across a variety of cohort samples, populations and environments are needed to investigate whether or not BMI has a meaningful life-course trajectory.

Supplementary data

Supplementary data are available at the *PUBMED* online.

Funding

This study was partly supported by the University of Manchester's Health eResearch Centre (HeRC) funded by the Medical Research Council (MRC) Grant MR/K006665/1 and partly funded by the ESRC Obesity eLab Grant (RES-149-25-1076).

References

- 1 Eknayan G. Adolphe Quetelet (1796–1874) - the average man and indices of obesity. *Nephrol Dial Transplant* 2008;**23**:47–51.
- 2 World Health Organization. Obesity: preventing and managing the global epidemic. Report of a WHO Consultation (WHO Technical Report Series 894). Geneva: World Health Organization 2000.
- 3 Wormser D, Kaptoge S, Di Angelantonio E *et al*. Separate and combined associations of body-mass index and abdominal adiposity with cardiovascular disease: collaborative analysis of 58 prospective studies. *Lancet* 2011;**377**:1085–95.
- 4 Vazquez G, Duval S, Jacobs DR Jr *et al*. Comparison of body mass index, waist circumference, and waist/hip ratio in predicting incident diabetes: a meta-analysis. *Epidemiol Rev* 2007;**29**:115–28.
- 5 Renehan AG, Soerjomataram I, Leitzmann MF. Interpreting the epidemiological evidence linking obesity and cancer: a framework for population-attributable risk estimations in Europe. *Eur J Cancer* 2010;**46**:2581–92.
- 6 Renehan AG, Tyson M, Egger M *et al*. Body-mass index and incidence of cancer: a systematic review and meta-analysis of prospective observational studies. *Lancet* 2008;**371**:569–78.
- 7 World Health Organization. Global health risks: mortality and burden of disease attributable to selected major risks. 2009. doi:10.2471/BLT.09.070565.
- 8 Finucane MM, Stevens GA, Cowan MJ *et al*. National, regional, and global trends in body-mass index since 1980: systematic analysis of health examination surveys and epidemiological studies with 960 country-years and 9.1 million participants. *Lancet* 2011;**377**:557–67.
- 9 Sperrin M, Marshall AD, Higgins V *et al*. Slowing down of adult body mass index trend increases in England: a latent class analysis of cross-sectional surveys (1992–2010). *Int J Obes (Lond)* 2014;**38**:818–24.

- 10 Ng M, Fleming T, Robinson M *et al.* Global, regional, and national prevalence of overweight and obesity in children and adults during 1980–2013: a systematic analysis for the Global Burden of Disease Study 2013. *Lancet* 2014;**6736**:1–16.
- 11 Yusuf S, Hawken S, Ounpuu S *et al.* Obesity and the risk of myocardial infarction in 27,000 participants from 52 countries: a case-control study. *Lancet* 2005;**366**:1640–9.
- 12 Consultation WHOE. Appropriate body-mass index for Asian populations and its implications for policy and intervention strategies. *Lancet* 2004;**363**:157–63.
- 13 Renehan AG. Height and cancer: consistent links, but mechanisms unclear. *Lancet Oncol* 2011;**12**:716–7.
- 14 Diverse Populations Collaborative Group. Weight-height relationships and body mass index: some observations from the Diverse Populations Collaboration. *Am J Phys Anthropol* 2005;**128**:220–9.
- 15 Buchan IE, Bundred PE, Kitchiner DJ *et al.* Body mass index has risen more steeply in tall than in short 3-year olds: serial cross-sectional surveys 1988–2003. *Int J Obes (Lond)* 2007;**31**:23–9.
- 16 Metcalf BS, Hosking J, Fremeaux AE *et al.* BMI was right all along: taller children really are fatter (implications of making childhood BMI independent of height) *EarlyBird* 48. *Int J Obes* 2011;**35**:541–7.
- 17 Benn RT. Some mathematical properties of weight-for-height indices used as measures of adiposity. *Br J Prev Soc Med* 1971;**25**:42–50.
- 18 Rohrer F. Der Index der Körperfülle als Maß des Ernährungszustandes (engl: The index of corpulence as measure of nutritional state). *Münchener Med Wschr* 1921;**68**:580–2.
- 19 Rosenthal M, Bain SH, Bush A *et al.* Weight/height^{2.88} as a screening test for obesity or thinness in school age children. *Eur J Pediatr* 1994;**153**:876–83.
- 20 Cole TJ, Henson GL, Tremble JM *et al.* Birthweight for length: ponderal index, body mass index or Benn index? *Ann Hum Biol* 1997;**24**:289–98.
- 21 Cheung YB, Albertsson-Wikland K, Luo ZC *et al.* Benn Index at birth is associated with postnatal linear growth. *J Pediatr Endocrinol Metab* 2002;**15**:1161–6.
- 22 Freeman JV, Power C, Rodgers B. Weight-for-height indices of adiposity: relationships with height in childhood and early adult life. *Int J Epidemiol* 1995;**24**:970–6.
- 23 Lazarus R, Baur L, Webb K *et al.* Adiposity and body mass indices in children: Benn's index and other weight for height indices as measures of relative adiposity. *Int J Obes Relat Metab Disord* 1996;**20**:406–12.
- 24 Zaninotto P, Head J, Stamatakis E *et al.* Trends in obesity among adults in England from 1993 to 2004 by age and social class and projections of prevalence to 2012. *J Epidemiol Community Heal* 2009;**63**:140–6.
- 25 Craig R, Mindell J. Health Survey for England - 2006, CVD and risk factors for adults, obesity and risk factors for children. London, 2008. <http://www.hscic.gov.uk/pubs/hse06cvdandriskfactors> (30 April 2015, date last accessed).
- 26 Craig R, Mindell J. *Health Survey for England 2006. Volume 3, Appendix B: Methodology and Documentation*. London: The Information Centre, 2008.
- 27 Royston P, Altman DG. Regression using fractional polynomials of continuous covariates: parsimonious parametric modelling. *Appl Stat* 1994;**43**:429–67.
- 28 Sauerbrei W, Royston P. Building multivariable prognostic and diagnostic models: transformation of the predictors by using fractional polynomials. *J R Stat Soc Ser A (Statistics Soc)* 1999;**162**:71–94.
- 29 R Core Team. R: *A Language and Environment for Statistical Computing*. Vienna, Austria, 2013. <http://www.r-project.org> (30 April 2015, date last accessed).
- 30 Ambler A, Benner A. mfp: Multivariable Fractional Polynomials. R package version 1.5.0. 2014. <http://CRAN.R-project.org/package=mfp> (30 April 2015, date last accessed).
- 31 Fraser A, Tilling K, Macdonald-Wallis C *et al.* Association of maternal weight gain in pregnancy with offspring obesity and metabolic and vascular traits in childhood. *Circulation* 2010;**121**:2557–64.
- 32 Yu ZB, Han SP, Zhu GZ *et al.* Birth weight and subsequent risk of obesity: a systematic review and meta-analysis. *Obes Rev* 2011;**12**:525–42.
- 33 De Leonibus C, Marcovecchio ML, Chiavaroli V *et al.* Timing of puberty and physical growth in obese children: a longitudinal study in boys and girls. *Pediatr Obes* 2013. <http://onlinelibrary.wiley.com/doi/10.1111/j.2047-6310.2013.00176.x/full> (30 April 2015, date last accessed).
- 34 Zheng W, Suzuki K, Sato M *et al.* Adolescent growth in overweight and non-overweight children in Japan: a multilevel analysis. *Paediatr Perinat Epidemiol* 2014;**28**:263–9.
- 35 Vandewalle S, Taes Y, Fiers T *et al.* Sex steroids in relation to sexual and skeletal maturation in obese male adolescents. *J Clin Endocrinol Metab* 2014. <http://press.endocrine.org/doi/abs/10.1210/jc.2014-1452> (30 April 2015, date last accessed).
- 36 Crocker MK, Stern EA, Sedaka NM *et al.* Sexual dimorphisms in the associations of BMI and body fat with indices of pubertal development in girls and boys. *J Clin Endocrinol Metab* 2014;jc20141384.
- 37 Burt Solorzano CM, McCartney CR. Obesity and the pubertal transition in girls and boys. *Reproduction* 2010;**140**:399–410.
- 38 Wronka I. Association between BMI and height in girls aged 7–18 years—a longitudinal study. *Anthropol Anz* 2013;**70**:319–29.
- 39 Bundred P, Kitchiner D, Buchan I. Prevalence of overweight and obese children between 1989 and 1998: population based series of cross sectional studies. *BMJ* 2001;**322**:326–8.