



THE UNIVERSITY *of* EDINBURGH

Edinburgh Research Explorer

Carbonate delta drift: a new sediment drift type

Citation for published version:

Lüdmann, T, Betzler, C, Eberli, GP, Reolid, J, Reijmer, JJG, Sloss, CR, Bialik, OM, Alvarez-zarikian, CA, Alonso-garcía, M, Blättler, CL, Guo, JA, Haffen, S, Horozal, S, Inoue, M, Jovane, L, Kroon, D, Lanci, L, Laya, JC, Mee, ALH, Nakakuni, M, Nath, BN, Niino, K, Petruny, LM, Pratiwi, SD, Slagle, AL, Su, X, Swart, PK, Wright, JD, Yao, Z & Young, JR 2018, 'Carbonate delta drift: a new sediment drift type', *Marine geology*. <https://doi.org/10.1016/j.margeo.2018.04.011>

Digital Object Identifier (DOI):

[10.1016/j.margeo.2018.04.011](https://doi.org/10.1016/j.margeo.2018.04.011)

Link:

[Link to publication record in Edinburgh Research Explorer](#)

Document Version:

Peer reviewed version

Published In:

Marine geology

General rights

Copyright for the publications made accessible via the Edinburgh Research Explorer is retained by the author(s) and / or other copyright owners and it is a condition of accessing these publications that users recognise and abide by the legal requirements associated with these rights.

Take down policy

The University of Edinburgh has made every reasonable effort to ensure that Edinburgh Research Explorer content complies with UK legislation. If you believe that the public display of this file breaches copyright please contact openaccess@ed.ac.uk providing details, and we will remove access to the work immediately and investigate your claim.



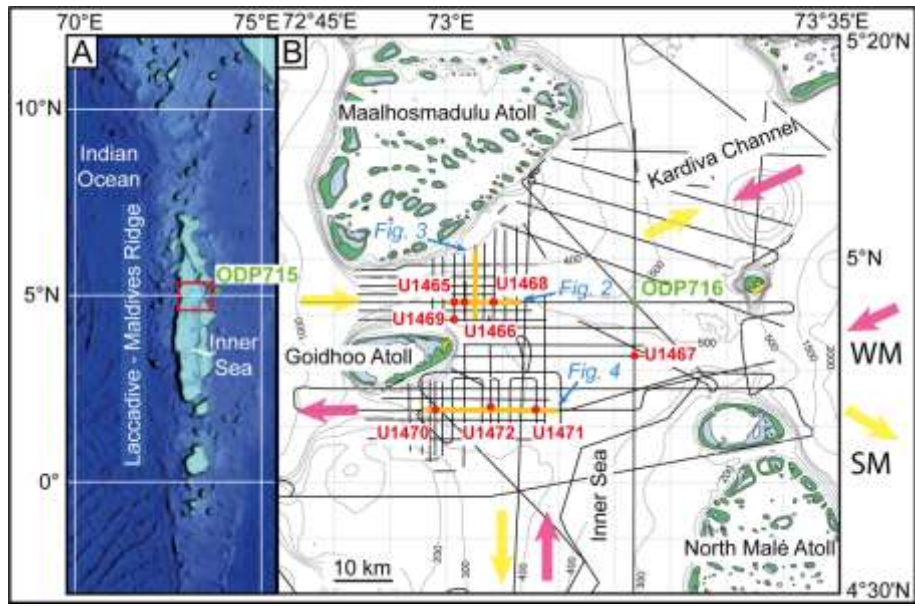


Fig. 1

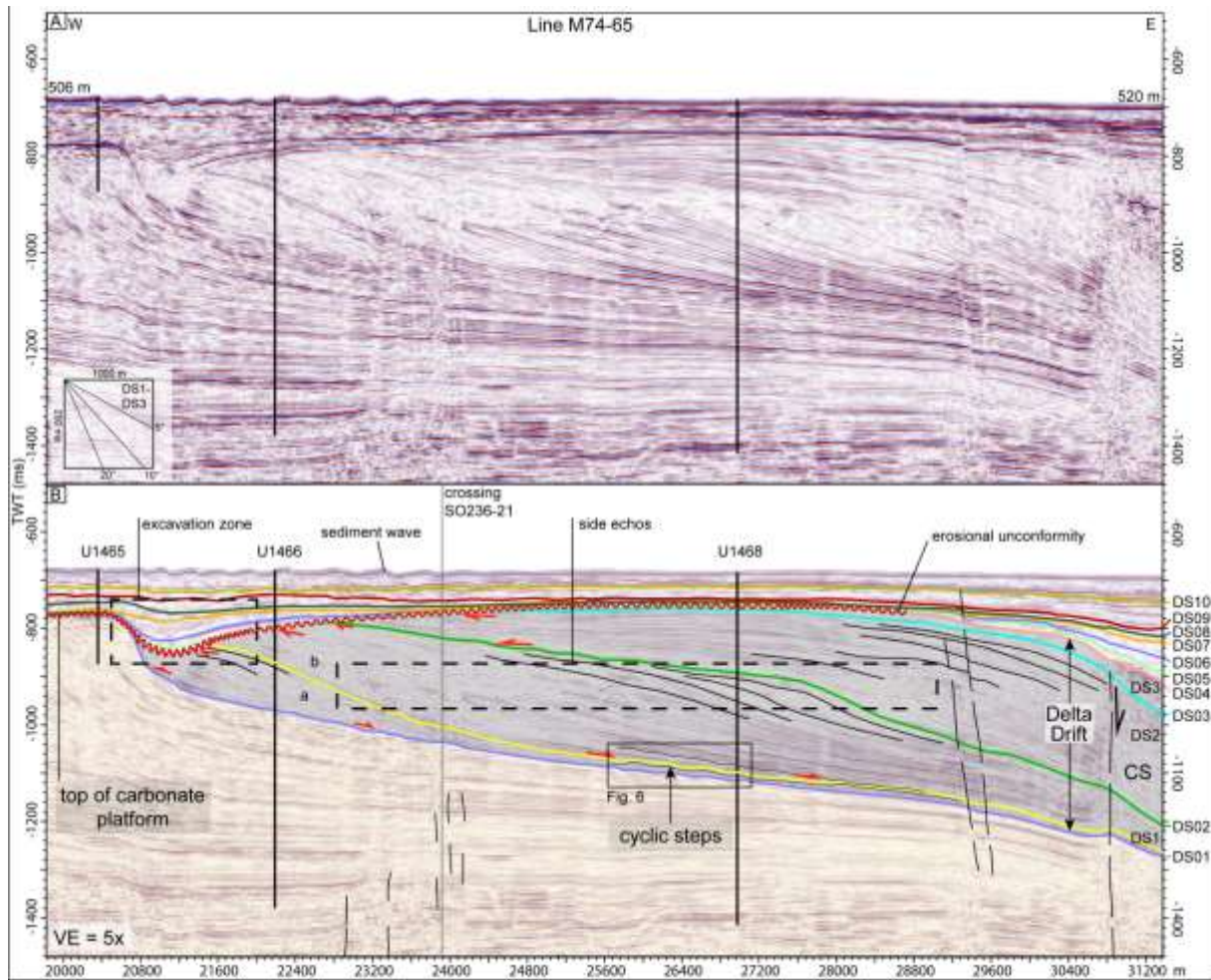


Fig. 2

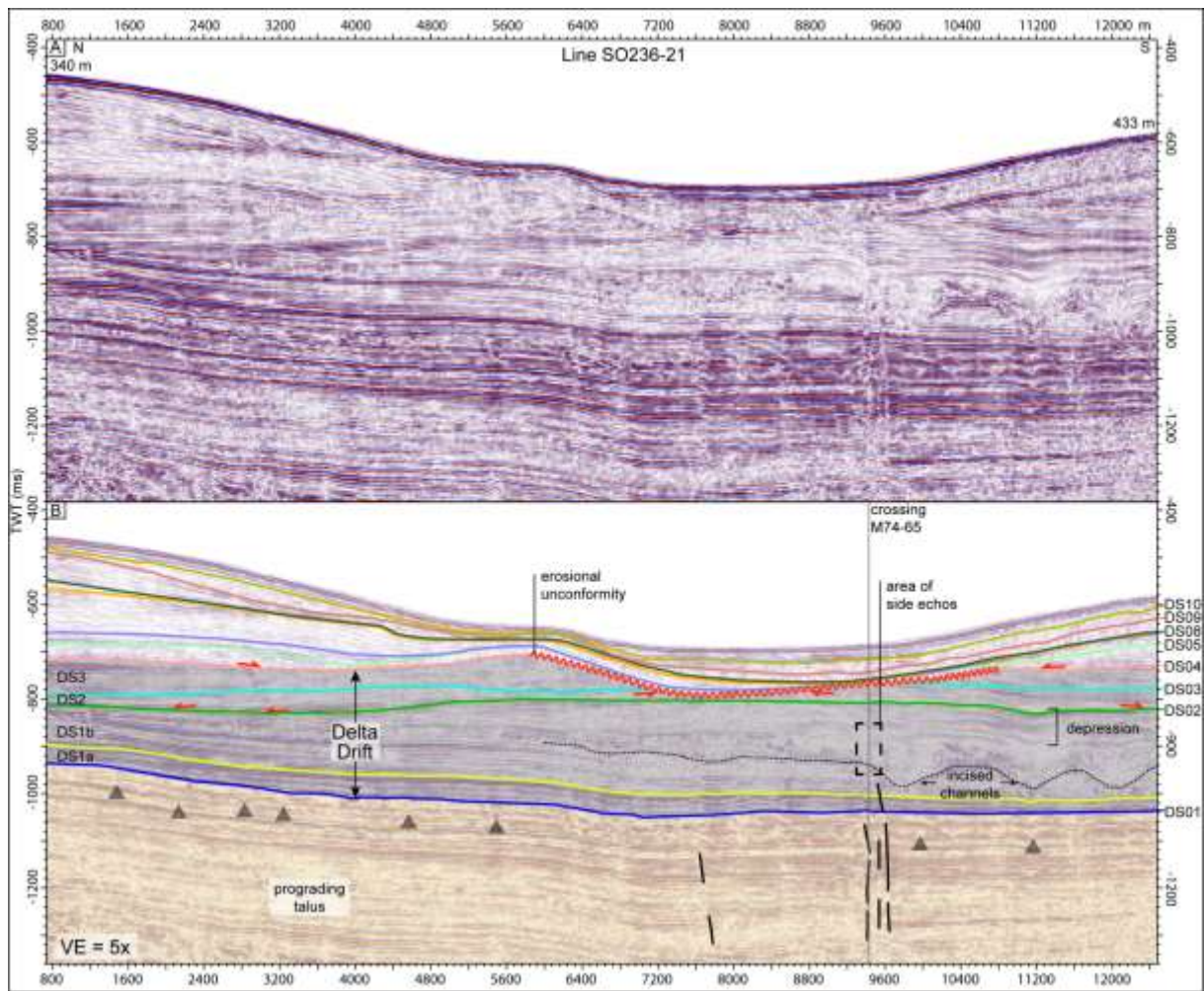


Fig. 3

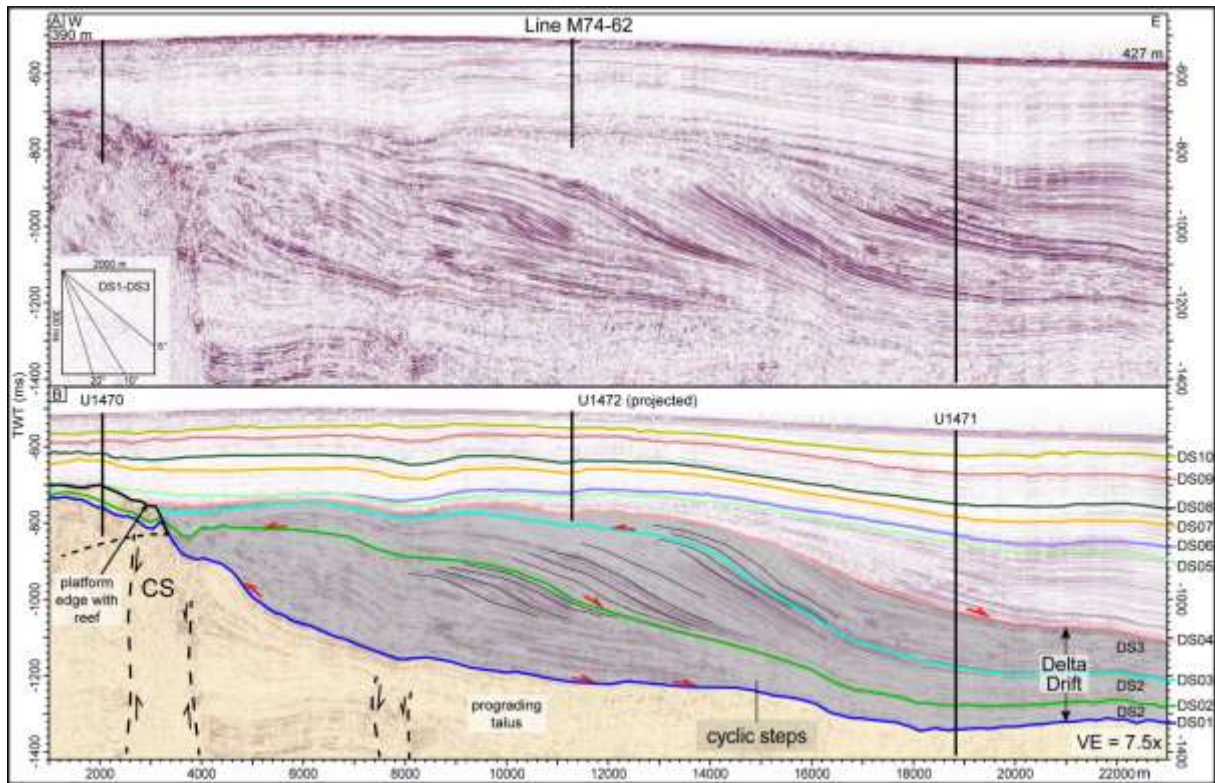


Fig. 4

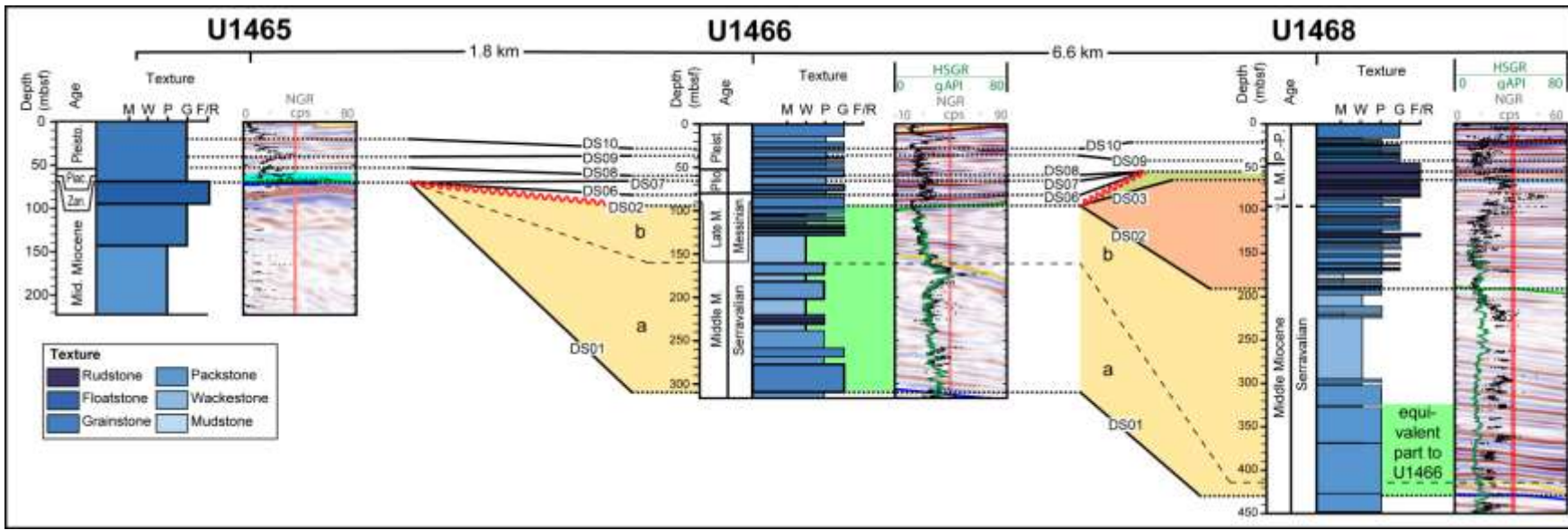


Fig. 5

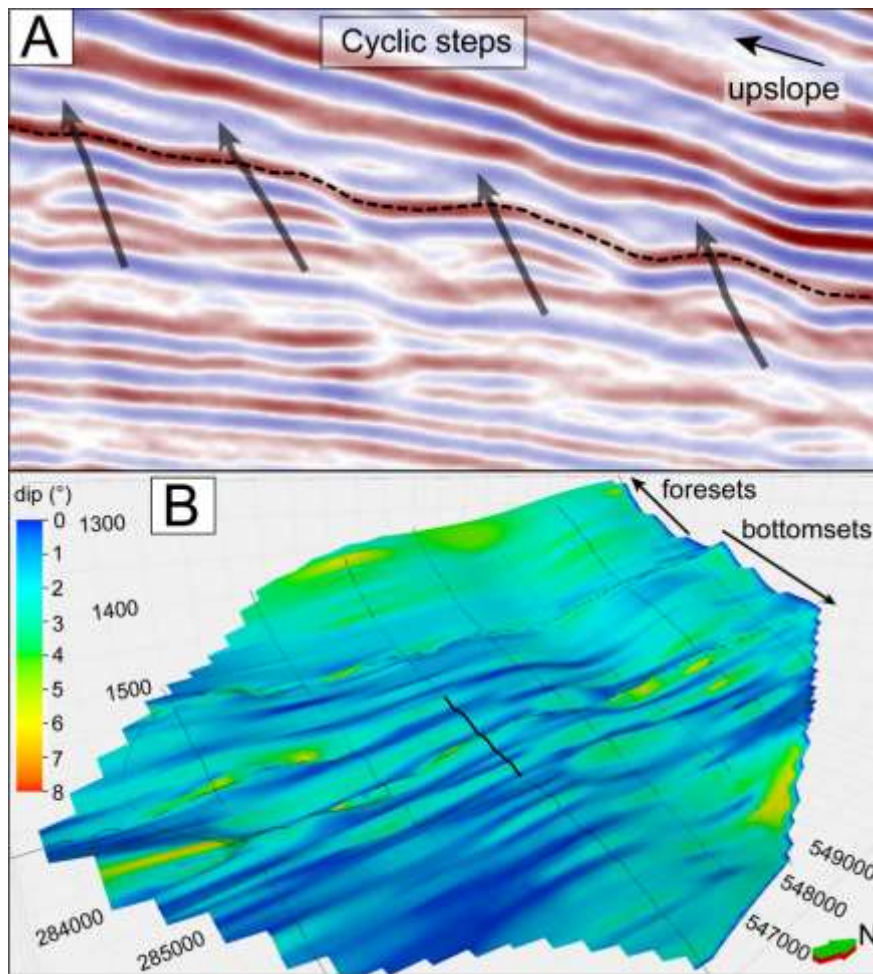


Fig. 6

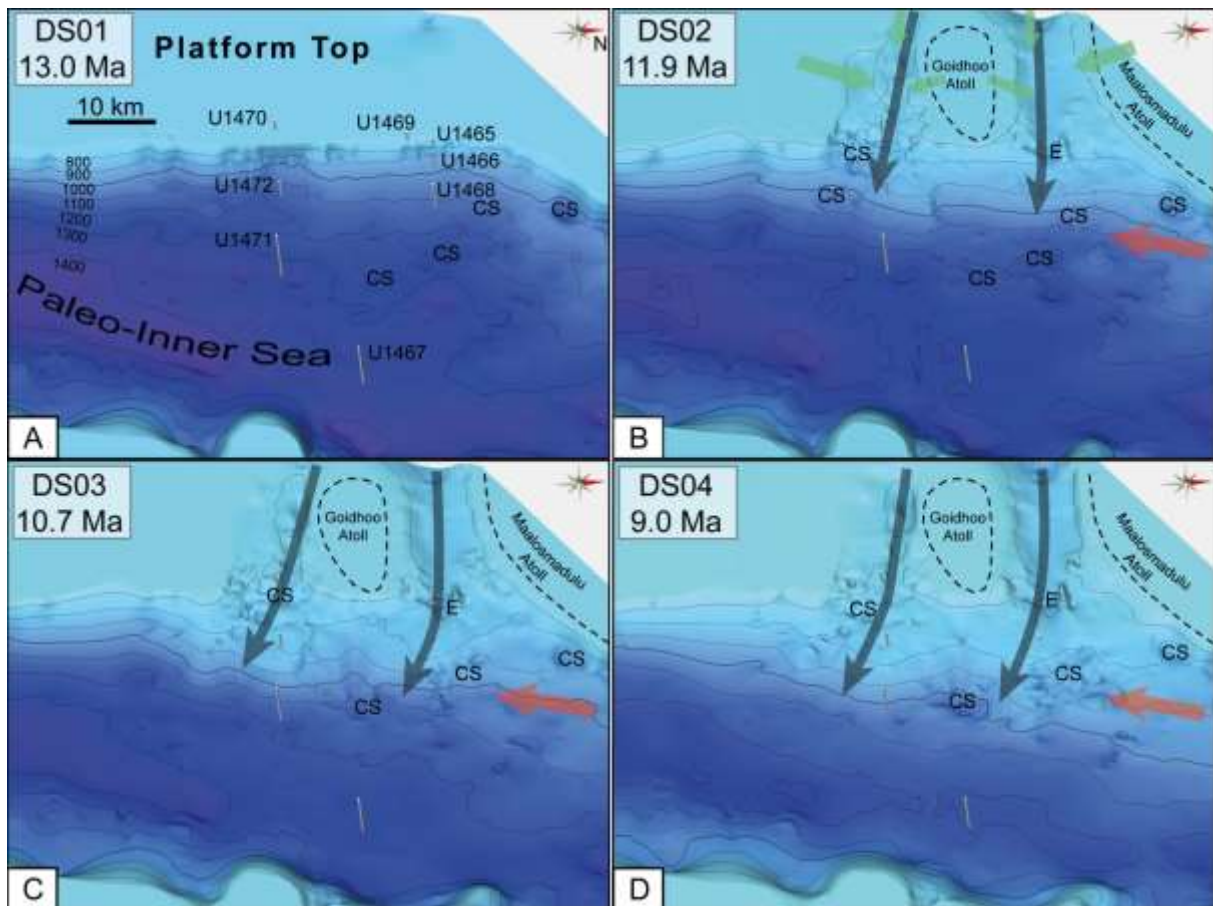


Fig. 7

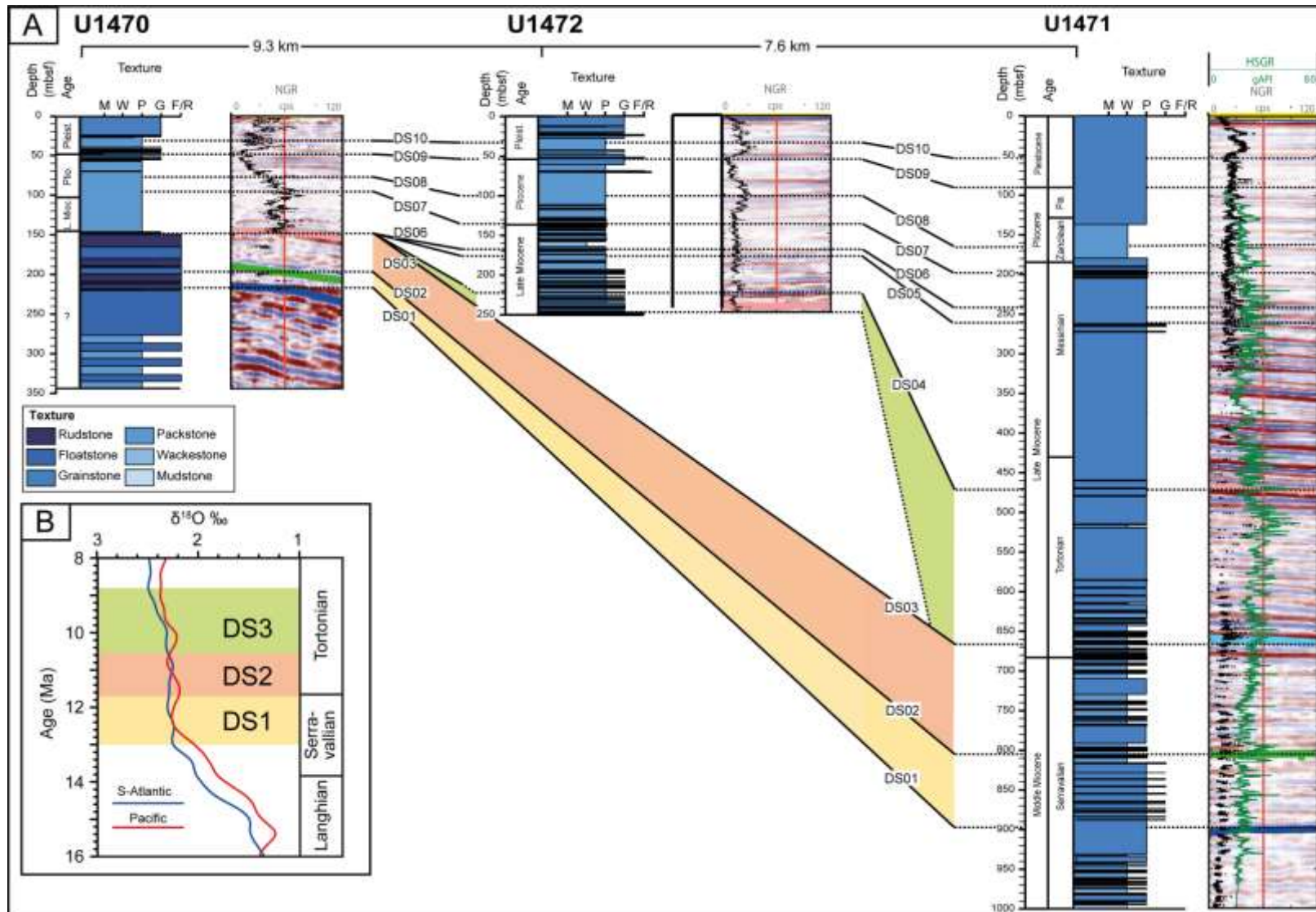


Fig. 8

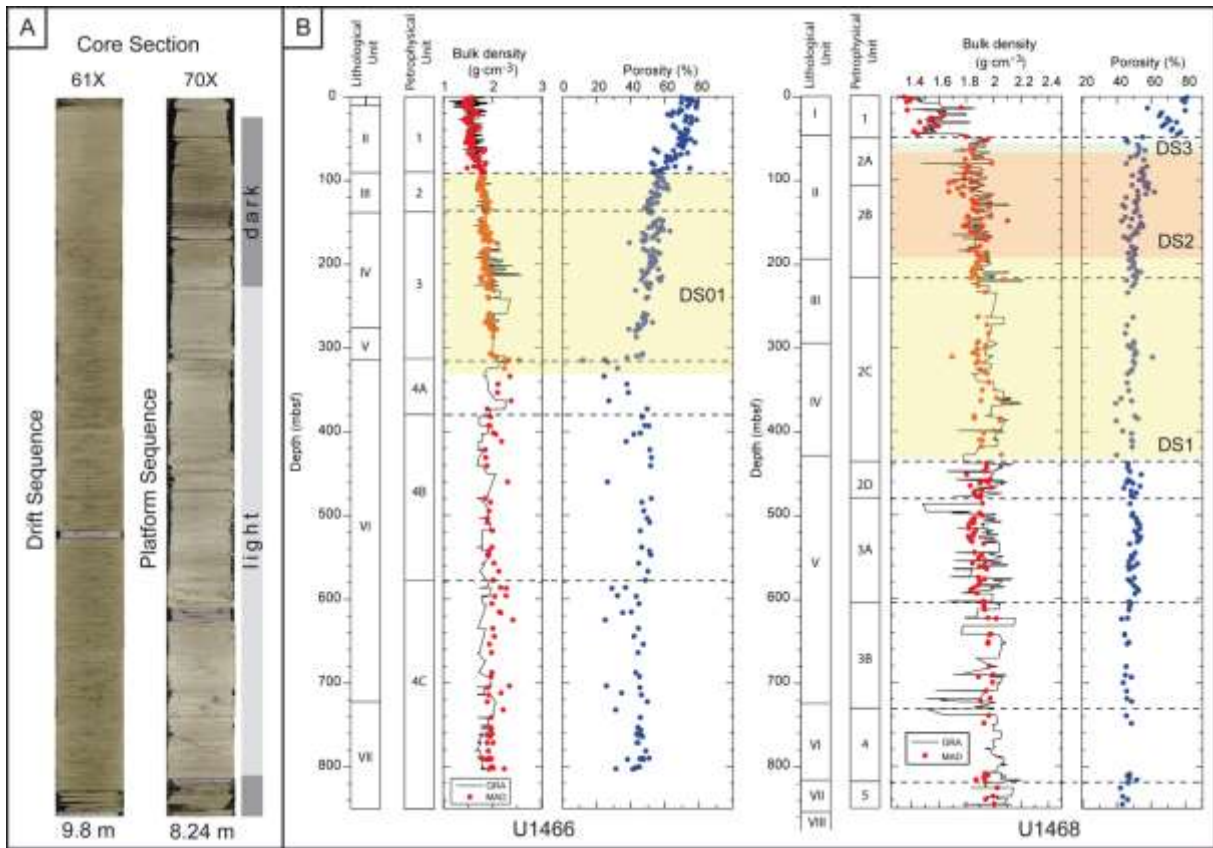


Fig. 9

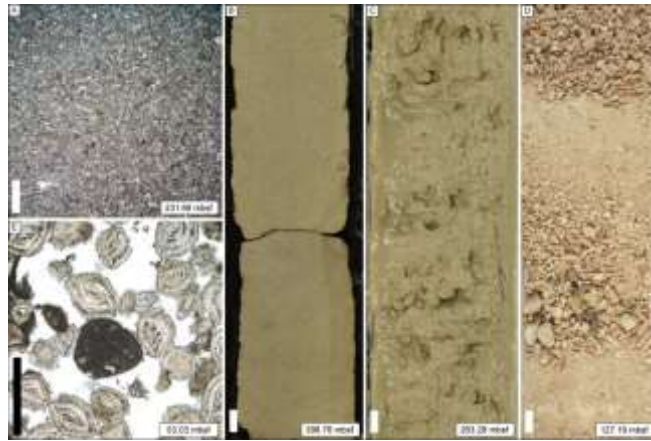


Fig. 10

Characteristics of delta drift			
Fabrics/Textures	Dominant Grain Size Range	Sedimentary Features	Bedding Style
generally sand size-dominated; proximal part: coarsening upward; bioclastic pkstn-gnstn to gnstn-rdstn; distal part: bioclastic wkstn-pkstn	proximal part: coarsening upward; medium to fine to granular-coarse; distal part: very fine to fine	medium to pervasive bioturbation; well-sorted; normal- to inverse grading; hardgrounds; chalk	no-lamination or bedding; tabular sheets; intervals of varying textures; strike and dip lengths up to kms
<p>Architecture</p> <p>Strike View:</p> <p>Dip View:</p> <p>Clinoforn</p>			
Geometry	Transport Processes	Source Factory	Resedimentation Process
width: 16-17 km length: ca. 25 km volume: 142-185 km ³ slope angles: 1°-3° (upper) 3°-5° (middle)	quasi-steady concentrated flow; predominantly downslope, subordinate along-slope	skeletal grains, bioclast, from platform-top and gateway; surface water primary production	wind-driven bottom current transport and erosion; offbank sweeping from waves and tidal or wind currents; water column fallout (pelagic)

Fig. 11