

Bhaskar Vira

University Senior Lecturer and Fellow of Fitzwilliam College

Department of Geography



Bhaskar Vira's research interests cross disciplinary boundaries, and span the fields of political economy, development studies and environmental studies. His work examines the social, political and economic dimensions of natural resource management, and the relationships between natural ecosystems and human well-being. He has contributed to the United Nations Millennium Ecosystem Assessment, and the United Kingdom National Ecosystem Assessment. His current research examines the political economy of natural resource use and management in India, and trade-offs and social justice issues associated with the management of ecosystem services.

Keywords

- environmental and development economics
- state-society interactions in development
- public policy in the developing world, especially India
- political economy, particularly the study of institutions and institutional change
- biodiversity conservation

e-mail: bv101@cam.ac.uk and for more information see his [website](#)

Chris Gilligan

Professor of Mathematical Biology

Department of Plant Sciences



Chris Gilligan's research is concerned principally with analysis of factors that influence and control invasion, persistence and variability of disease and other organisms using a combination of experimentation and modelling. His group's current experimental programme studies the spatial and temporal dynamics of beneficial and pathogenic, soil-borne, micro-organisms at a range of spatial scales and as model experimental microcosms of larger-scale systems in the field. Their theoretical work uses a range of mathematical and statistical techniques to analyse the spatial and temporal dynamics of epidemics. They are particularly concerned to link theory with data from experiments and observational studies in order to test models that will be used to help in controlling epidemics.

Keywords

- spread of genetically modified crops
- control of antibiotic and pesticide resistance for plant and animal diseases
- control of plant disease
- invasion of new or recurrent animal and plant disease

e-mail: cag1@cam.ac.uk and for more information see his [group's website](#)

David Cleevely

Founding Director and Executive Committee Member

Cambridge Centre for Science and Policy (CSaP)



David Cleevely CBE FREng FIET is the Chairman of CRFS, which he co-founded in July 2007, and the founder and former Chairman of telecoms consultancy Analysys (acquired by Datatec International in 2004). In 1998, he co-founded the web based antibody company Abcam (ABC.L) with Jonathan Milner and was Chairman until November 2009. In late 2004 he co-founded the 3G femto base station company, 3WayNetworks, which was sold to Airvana in April 2007. He has invested in over 35 companies and is Chairman of four of them, including the award winning restaurant "Bocca di Lupo". He has been a prime mover behind Cambridge Network, co-founder of Cambridge Wireless, co-founder and Chairman of Cambridge Angels and is a member of the IET Communications Policy Panel. For 8 years until March 2009 he was a member of the Ofcom Spectrum Advisory Board.

Keywords

- policy and innovation frameworks
- telecommunication policy
- biotechnology

e-mail: david.office@cleevely.co.uk and for more information see his [website](#)

Doug Crawford-Brown

Executive Director, Cambridge Centre for Climate Change Mitigation Research (4CMR),

Department of Land Economy



Doug's interests lie broadly at the intersection of science, public policy and philosophy. This involves the development of advanced scientific models to estimate the risks and other environmental consequences of material and energy use; the application of these models in risk-based environmental and economic decisions; and analysis of the quality of science forming the evidence base for policy. These are integrated primarily into work on climate change and sustainability for the built and natural environments, as well as air and water policy.

Keywords

- risk assessment
- climate change and sustainability for the built and natural environments
- air and water policy
- climate change
- epistemic analysis of science in environmental policy
- environmental policy

e-mail: djc77@cam.ac.uk and for more information see his [website](#)

Emily Shuckburgh

Head of Open Oceans

British Antarctic Survey



I am head of the Open Oceans research group at the British Antarctic Survey (BAS). I am also a fellow of Darwin College, Cambridge and at present I am undertaking a part time secondment to the UK Government's Dept of Energy and Climate Change. My research is focused on gaining a better understanding of the dynamics of the atmosphere and oceans to improve predictions of future climate change. I use a combination of theoretical studies, numerical modelling and analysis of observational data. I regularly give presentations and briefings to stakeholder groups on climate change and sustainability. I am an associate of the Cambridge Centre for Climate Change Mitigation Research and a faculty member for many programmes of the Cambridge Programme for Sustainability Leadership.

Keywords

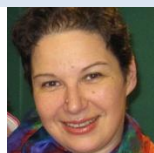
- communication and public attitudes to climate change and climate science
- linking climate change and sustainability
- climate change
- the role of the polar oceans in the global climate system
- the transport and dynamics of the atmosphere, oceans and climate using theoretical approaches, observational studies and numerical modelling to improve predictions of future climate change

e-mail: emsh@bas.ac.uk and for more information see her [website](#)

Gordana Najdanovic

Head of Partnership Development

Research Strategy Office



Gordana Najdanovic works in the Research Strategy Office, which provides research strategy and policy support to the Pro-Vice Chancellor for Research at the University of Cambridge. She focuses on developing strategic research initiatives in physical sciences and technology and arts, humanities and social sciences, as well as facilitating other strategic research activities.

Keywords

- developing strategic research initiatives in physical sciences and technology and arts, humanities and social sciences
- research strategy and policy support
- facilitating other strategic research activities

e-mail: Gordana.Najdanovic@admin.cam.ac.uk and for more information see her [website](#)

Helen Curry

Peter Lipton Lecturer

Department of the History and Philosophy of Science



Helen Curry joined the Department of the History and Philosophy of Science in September 2012 as lecturer in the history of modern science and technology. She is currently working on a book, *Evolution to Order: Genetic Technologies and American Agriculture, 1925–1960*. The book traces the history of several early technologies of genetic modification, including their development as research tools in genetics and evolutionary biology, their application as novel methods of plant breeding, and their celebration in American popular culture as means of engineering life.

Keywords

- environmental history.
- history of 20th and 21st century science and technology, including especially biology and biotechnology
- the history of agriculture, horticulture, gardening and conservation

e-mail: hac44@cam.ac.uk and for more information see her [website](#)

Hildegard Diemberger

Senior Associate in Research, Mongolia and Inner Asia Studies Unit

Department of Social Anthropology



Research interests: Tibetan cultural area and Tibet-Mongolia interface; local-state dynamics and deals with the impact of radical change on traditional communities; landscape, space and time; local history and memory; changing notions of power and kinship; and debates over continuity, tradition and modernity.

The cultures and peoples of Tibet and the Himalayan regions have for centuries been seen by foreigners as principal sites for the study of the 'traditional'. Today these areas face compelling challenges from global and regional change. The project "Tradition and Modernity in Tibet and the Himalayas" carried out research from 2001 to 2005 into aspects of the tradition-modernity issue in these understudied regions. Between 2004-2007 I coordinated the Tibetan-Mongolian Rare Books and Manuscripts project as part of the Mongolia and Inner Asia Studies Unit (MIASU). I am currently working on an AHRC Research Project led by Prof. Caroline Humphrey: *Tibetan woman-lama and her reincarnations: a study of the bSam-sdings rDor-je Phag-mo (15th-21st Century)*.

Keywords

- Tibetan cultural area and Tibet-Mongolia interface
- climate change indicators
- traditional knowledge
- debates over continuity, tradition and modernity
- climate change
- local history and memory
- landscape, space and time
- local-state dynamics and deals with the impact of radical change on traditional communities
- changing notions of power and kinship

e-mail: hgmd2@cam.ac.uk and for more information see her [website](#)

Jake Reynolds

Director of Business Platforms

Cambridge Programme for Sustainability Leadership



Jake Reynolds rejoined CPSL in 2011 as Director of Business Platforms. In this role he is responsible for enabling business leaders to identify system-level solutions to sustainability problems. Previously Jake was Head of Well-being at the Sustainable Development Commission, leading change in public policy in the education, health and transport fields. He was nominated for Civil Service Awards in 2009 and 2010. Between 1999 and 2004 Jake helped to refocus CPSL's work on sustainability leadership, building on seven years' experience in conservation with UNEP and other organisations in India, Kenya, Lebanon, Bahamas, Guyana and Uganda. This built on a track record of engineering research at the University of Oxford and University of Sussex. Jake is a Governor of Impington Village College, a large secondary school in Cambridgeshire, and sits on the Socially Responsible Investment Advisory Board of Sarasin & Partners LLP.

Keywords

- enabling business leaders to identify system-level solutions to sustainability problems, including with the food, energy and finance industries
- organisational learning
- climate change
- sustainability
- public policy

e-mail: jake.reynolds@cpsl.cam.ac.uk and for more information see his [website](#)

Koen Steemers

Head of Department and Professor of Sustainable Design

Department of Architecture



An architect and environmental design specialist, Koen Steemers was recently listed as one of the "top 50 most influential people in UK sustainability" by Building Design. His current work deals with the architectural and urban implications of environmental issues ranging from energy use to human comfort. He is Professor of Sustainable Design in the Department of Architecture, was Director of the Martin Centre for Architectural and Urban Studies (03-08), and is a Director of Cambridge Architectural Research Ltd. Koen's research activities are focused on the environmental performance of buildings and cities with a particular interest in human perception and behaviour..

Keywords

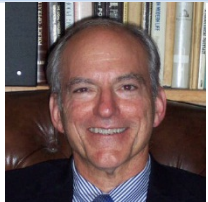
- the environmental performance of buildings and cities, with a particular interest in human perception and behaviour
- the architectural potential of environmental issues such as energy, light and comfort
- efficiency
- climate change
- the architectural and urban implications of environmental issues

e-mail: kas11@cam.ac.uk and for more information see his [website](#)

Professor Laurence Sherman

Director of the Institute and Wolfson Professor of Criminology,

The Institute for Criminology, University of Cambridge



Lawrence W. Sherman is Director of the Institute of Criminology of the University of Cambridge, where he has served as Wolfson Professor of Criminology since 2007. He is also Director of both the Jerry Lee Centre for Experimental Criminology and the Cambridge Police Executive Programme, which offers postgraduate degree and non-degree courses on evidence-based policing to police leaders and crime analysts from around the world.

His research interests are in the fields of crime prevention, evidence-based policy, restorative justice, police practices and experimental criminology. He has conducted field experiments, for example, on finding more effective ways to reduce homicide, gun violence, domestic violence, robbery, burglary, and other crime problems, in collaboration with such agencies as the Metropolitan, Northumbria and Thames Valley Police, London's Crown Courts, HM Prisons, the Crown Prosecution Service, the Youth Justice Board of England and Wales, and the National Probation Service, as well as 30 US police agencies and the Australian Federal Police. Since 1995, he has been co-directing a program of prospective longitudinal experiments in restorative justice involving some 2500 offenders and 2000 crime victims. Since 2005, he has been developing new tools for predicting murder among offenders on probation and parole in Philadelphia, as well as randomized trials of intensive services among highest-risk offenders.

Keywords

- evidence-based policy
- crime prevention
- restorative justice
- police practices
- experimental criminology

e-mail: ls434@cam.ac.uk and for more information see his [website](#)

Martin Rees

Professor of Cosmology and Astrophysics

Department of Astronomy



Martin Rees is a Fellow of Trinity College and Emeritus Professor of Cosmology and Astrophysics at the University of Cambridge. He holds the honorary title of Astronomer Royal and also Visiting Professor at Imperial College London and at Leicester University.

After studying at the University of Cambridge, he held post-doctoral positions in the UK and the USA, before becoming a professor at Sussex University. In 1973, he became a fellow of King's College and Plumian Professor of Astronomy and Experimental Philosophy at Cambridge (continuing in the latter post until 1991) and served for ten years as director of Cambridge's Institute of Astronomy. From 1992 to 2003 he was a Royal Society Research Professor, and then from 2004 to 2012, Master of Trinity College. In 2005 he was appointed to the House of Lords, and he was President of the Royal Society for the period 2005-10.

Martin is also one of the co-founders of The Cambridge Centre for the Study of Existential Risk (CSER). The Centre — a joint initiative between a philosopher, a scientist, and a software entrepreneur — was founded on the conviction that these issues require a great deal more scientific investigation than they presently receive. CSER is a multidisciplinary research centre dedicated to the study and mitigation of risks of this kind.

Keywords

- High energy astrophysics -- especially gamma ray bursts, galactic nuclei, black hole formation and radiative processes (including gravitational waves).
- Cosmic structure formation -- especially the early generation of stars and galaxies that formed at high redshifts at the end of the cosmic 'dark age'.
- General cosmological issues.

e-mail: mjr36@hermes.cam.ac.uk and for more information see his [website](#)

Mike Rands

Executive Director

Cambridge Conservation Initiative



I am the Executive Director of the Cambridge Conservation Initiative, based in the University of Cambridge Judge Business School. After an early career as a research ecologist studying farmland wildlife populations in the UK, I developed and directed a programme of multidisciplinary conservation projects in over 100 countries for an international conservation organisation (ICBP). In 1996 I was appointed Chief Executive of the global conservation partnership, BirdLife International, before joining CCI as its first Director in 2009.

I am broadly interested in interdisciplinary approaches to managing the natural environment. This includes: the interface between science, policy and practice; environmental governance and capacity development; the relationships between business and biodiversity; and developing innovative solutions for the conservation of nature.

Keywords

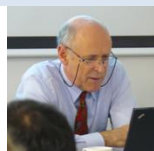
- developing innovative solutions for the conservation of nature
- interdisciplinary approaches to managing the natural environment, including the interface between science, policy and practice
- environmental governance and capacity development
- the relationships between business and biodiversity
- biodiversity conservation

e-mail: m.rands@jbs.cam.ac.uk and for more information see his [website](#)

Miles Parker

Associate Fellow and Former Deputy Chief Scientific Adviser to the Department for Environment, Food and Rural Affairs (DEFRA)

Cambridge Centre for Science and Policy (CSaP)



"Government tends to be very wary of Rumsfeld's third challenge (unknown unknowns) but forgets his unstated fourth – unknown knowns, i.e. the things other people know about but we don't (and don't know what questions to ask). Cambridge is supremely well positioned to help Government become aware of emerging issues but needs itself to develop the skills to catch the attention of policy makers, which are not simply about telling but also about listening and understanding. CSaP is just the right initiative to make a difference in this communication."

Until the end of 2012, Miles was Defra's Director for Strategic Evidence and Analysis and Deputy Chief Scientific Adviser. With an academic background in zoology and marine ecology, his career spans roles within Government Departments in Ireland and the UK addressing areas such as waste disposal at sea, food contamination and food science. Between 1998 and 2001, he was Director for International Science at the Office of Science and Technology and has long-standing connections to MAFF, Defra and Cefas. He was awarded the OBE in the New Year's Honours List 2013.

e-mail: Miles.parker@csap.cam.ac.uk and for more information see his [website](#)

Nicolette Bartlett

Senior Programme Manager, Corporate Leaders Network for Climate Action (CLN),

Cambridge Programme for Sustainability Leadership (CPSL)



Nicolette currently leads development of the Corporate Leaders Network for Climate Action (CLN), an international network of business leadership groups focused on triggering the shift to low carbon, climate-resilient economies.

During the last two and a half years at CPSL, she has managed The Prince of Wales's Corporate Leaders Group on Climate Change (CLG) and has played a key role in their international initiatives, the Communiqués on climate change, which are seen by many as the definitive statements from the international progressive business community in advance of the UN climate change negotiations.

Prior to working at CPSL, Nicolette worked at a London-based recycling consultancy and was a consultant for one of the leading executive coaching and leadership consultancies in Europe. She holds a BSc (Natural Sciences) and an MSc in Human Ecology.

Keywords

- climate change
- sustainability

Paul Linden

G.I. Taylor Professor of Fluid Mechanics

Department of Applied Mathematics and Theoretical Physics (DAMTP)



The focus of Paul's research is environmental fluid mechanics. The Environmental and Industrial Fluid Dynamics group at DAMTP conducts experimental and theoretical research on problems associated with our environment and the processes that affect and are impacted by climate change. They study and develop models of the fluid flow in low-energy buildings, gravity-driven flows in stratified and rotating fluids, internal waves and mixing in stratified fluids.

Keywords

- low-energy buildings
- internal waves and mixing in stratified fluids
- climate change
- gravity-driven flows in stratified and rotating fluids
- sustainability
- environmental fluid mechanics

e-mail: p.f.linden@damtp.cam.ac.uk and for more information see his [website](#)

Peter Guthrie

Director of the Centre for Sustainable Development

Department of Engineering



Peter's research is focused on the assessment of large scale projects for sustainability and work has included consideration of mixed developments, mining projects, housing, and educational buildings. He also pursues research in the sustainable development of infrastructure in developing countries, including the challenging the appropriateness of technical standards, waste management, the potential for waste materials to be used as materials in construction, and the engineering of earth roads. He is currently working with FIDIC (Federation of International Consulting Engineers) and has now published a report on sustainability assessment for infrastructure.

Keywords

- disaster relief
- the assessment of large scale projects for sustainability, including mixed developments, mining projects, housing, and educational buildings
- the sustainable development of infrastructure in developing countries, including the challenging the appropriateness of technical standards, waste management, the potential for waste materials to be used as materials in construction, and the engineering of earth roads

e-mail: pmg31@cam.ac.uk and for more information see his [website](#)

Polly Courtice

Director of CPSL and Co-Director of The Prince of Wales's Business & Sustainability Programme and The Prince of Wales's Corporate Leaders Group on Climate Change.

Cambridge Programme for Sustainability Leadership (CPSL)



In addition to being the director of Cambridge University's Programme for Sustainability Leadership, Polly is also the co-director of The Prince of Wales's Business & Sustainability Programme and The Prince of Wales's Corporate Leaders Group on Climate Change. She is also a member of the University's Board of Executive and Professional Development and academic director of CPSL's Masters in Sustainability Leadership and a director of Jupiter Green Investment Trust. In 2007 she was appointed by Al Gore to run his Climate Project in the UK, helping leaders deepen their understanding of climate change and explore appropriate action. In 2008 she was made a Lieutenant of the Victorian Order (LVO) announced in the Queen's Birthday Honours list.

Keywords

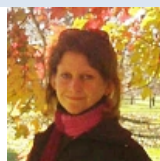
- helping leaders in business and government deepen their understanding and responses to global challenges such as climate change, social justice, and food security
- linking social justice and natural resources
- linking climate with specific sectors, such as pensions, insurance and banking

e-mail: Polly.Courtice@cpsl.cam.ac.uk and for more information see her [website](#)

Rosamunde Almond

Executive Secretary of the Forum

Department of Applied Mathematics and Theoretical Physics (DAMTP)



My PhD and my first post-doc were in primate behaviour, and my interest in sustainability stems from my second post-doc in the Zoology Department, where I modelled factors that influence whether the use of wild animals and plants in Asia is sustainable. In parallel with my research, I have always been passionate about science communication and I worked as an independent consultant for WWF on their Living Planet Report in 2010 and in 2012, helping to turn their biannual flagship publication into compelling and engaging reports about on the state of biodiversity and how our consumption and our 'footprint' affects the natural world. These were released in over 80 countries and have been translated into 14 different languages, reaching a larger audience than ever before.

Since the end of 2010, I have been one of two Programme Managers of the CCI Shared Challenges Programme, catalyzing and coordinating collaborative projects between CCI partner organisations and the departments within the University of Cambridge. In June 2012, I became the CCI Programmes Coordinator and I will begin to work full time for the Forum as its Executive Secretary in March.

e-mail: r.almond@damtp.cam.ac.uk

Tiago Cavalcanti

University Senior Lecturer

Department of Economics



Tiago V. de V. Cavalcanti is a senior lecturer in the Faculty of Economics and a fellow of Churchill College. He gained his PhD in economics from University of Illinois at Urbana-Champaign and taught first at Universidade Nova de Lisboa in Spain from 2001 to 2003 followed by Univerisdade Federal de Pernambuco in Brazil from 2003 to 2007. He then moved to the United States and became visiting assistant professor at Purdue University from 2005 to 2006. His teaching and research focuses on macroeconomics, growth economic development, and inequality. He is also the editor of the B.E. Journal of Macroeconomics.

Main interests

- macroeconomics
- economic development
- monetary economics

e-mail: tvdc2@cam.ac.uk and for more information see his [website](#)

Susan Owens

Head of Department, Professor of Environment and Policy and Professorial Fellow of Newnham College

Department of Geography



Susan Owens has researched and published widely in the field of environmental governance. Her current projects are concerned with relations between science and politics, and with the role of argument, evidence, ideas and advice in policy formation and change. She has also worked extensively on interpretations of sustainable development in theory and practice, particularly in the context of land use and environmental planning. Recently she have become interested in the 'subversive' functions of planning, exploring connections between planning conflicts (especially those concerned with contentious technologies and infrastructures) and developments in wider domains of public policy.

Keywords

- land use and environmental planning
- environmental governance, including policy processes
- interpretations of sustainable development in theory and practice, particularly in the context of land use and environmental planning
- relations between science and politics
- knowledge and policy learning
- the 'subversive' functions of planning, exploring connections between planning conflicts (especially those concerned with contentious technologies and infrastructures) and developments in wider domains of public policy
- the role of argument, evidence, ideas and advice in policy formation and change

e-mail: susan.owens@geog.cam.ac.uk and for more information see her [website](#)