

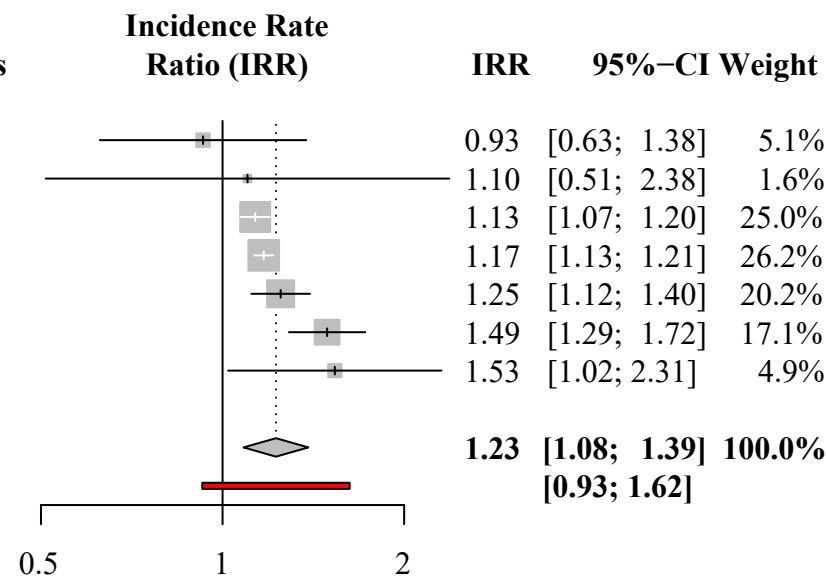
Deprivation categories compared: Medium versus low deprivation groups

Author (year)	Medium deprivation		Low deprivation	
	Cases	Person-years	Cases	Person-years
Reading (2006)	71	117159	38	58203
Hunter (2020)	9	15091	23	42415
Wigglesworth Gold (2023)	2049	4322402	2931	7002995
Wigglesworth Arum (2023)	4714	12167581	7623	23024260
Pickrell (2015)	504	1717294	779	3313117
Meeraus (2013)	298	211482	461	487608
Heaney (2002)	40	73620	55	155372

Random effects model

Prediction interval

Heterogeneity: $I^2 = 63\%$, $p = 0.013$



Deprivation categories compared: High versus low deprivation groups

Author (year)	High deprivation		Low deprivation	
	Cases	Person-years	Cases	Person-years
Wigglesworth Arum (2023)	11814	30093171	7623	23024260
Wigglesworth Gold (2023)	4894	9724113	2931	7002995
Reading (2006)	46	58494	38	58203
Hunter (2020)	27	40727	23	42415
Meeraus (2013)	455	346539	461	487608
Pickrell (2015)	1107	3069821	779	3313117
Heaney (2002)	90	129802	55	155372

Random effects model Prediction interval

Heterogeneity: $I^2 = 85\%$, $p < 0.0001$

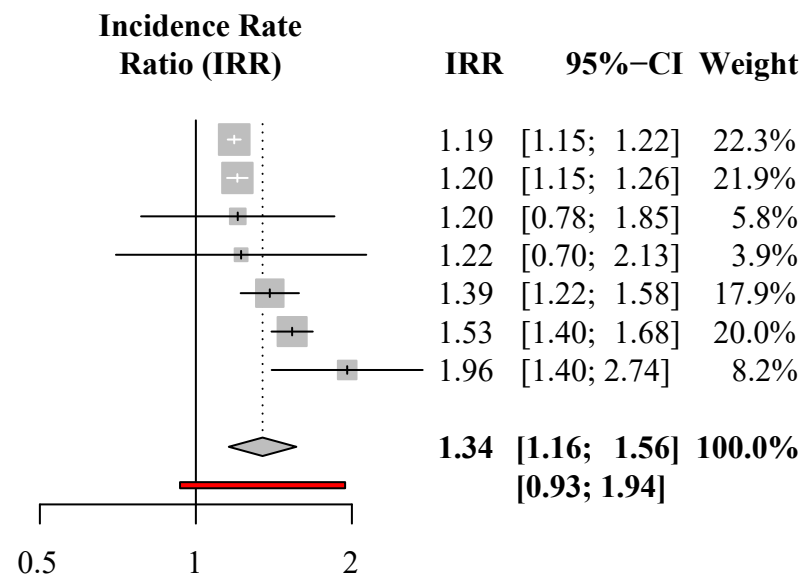


Figure:2: Meta-analyses of epilepsy incidence rates according to levels of deprivation

