

Figure 1: Effect of rt-PA on an excellent stroke outcome (mRS0-1) in groups defined by the current EU label as well as an EU label without an upper age restriction

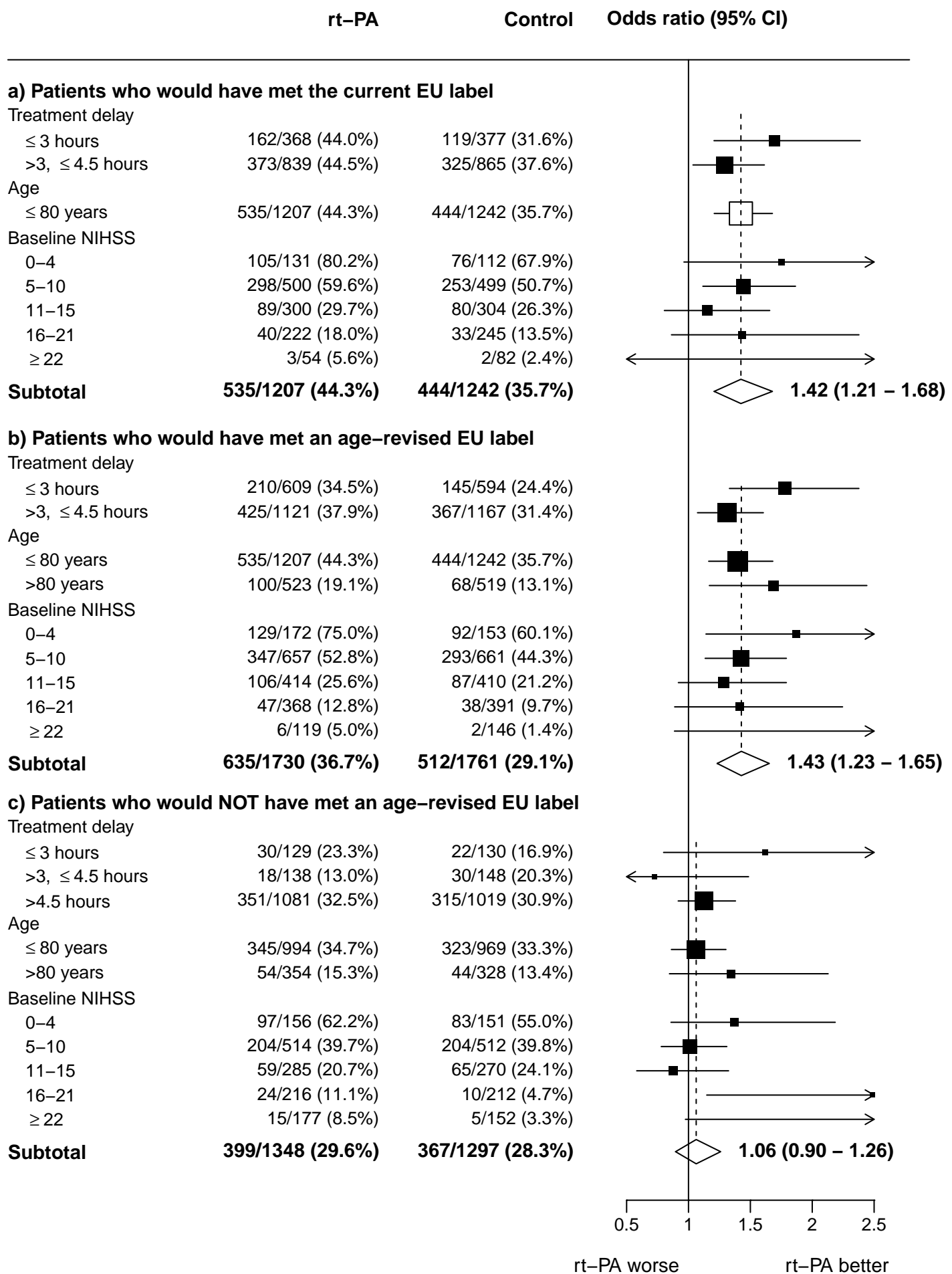


Figure 2: Effect of rt-PA on 90-day mortality in groups defined by the current and extended labels in the EU and US

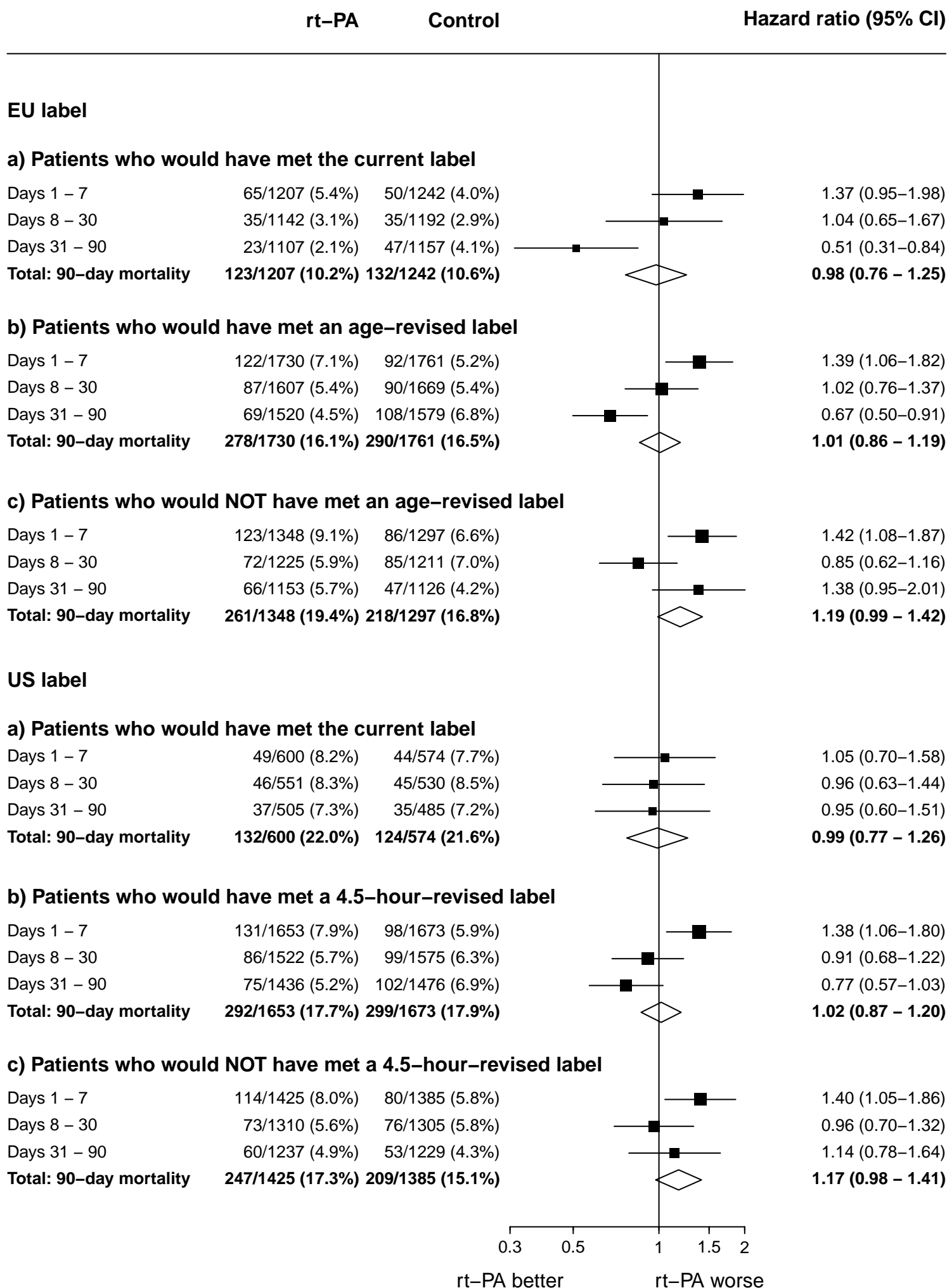


Figure 3: Effect of rt-PA on an excellent stroke outcome (mRS0–1) in groups defined by the current US label as well as a US label extended to 4.5 hours

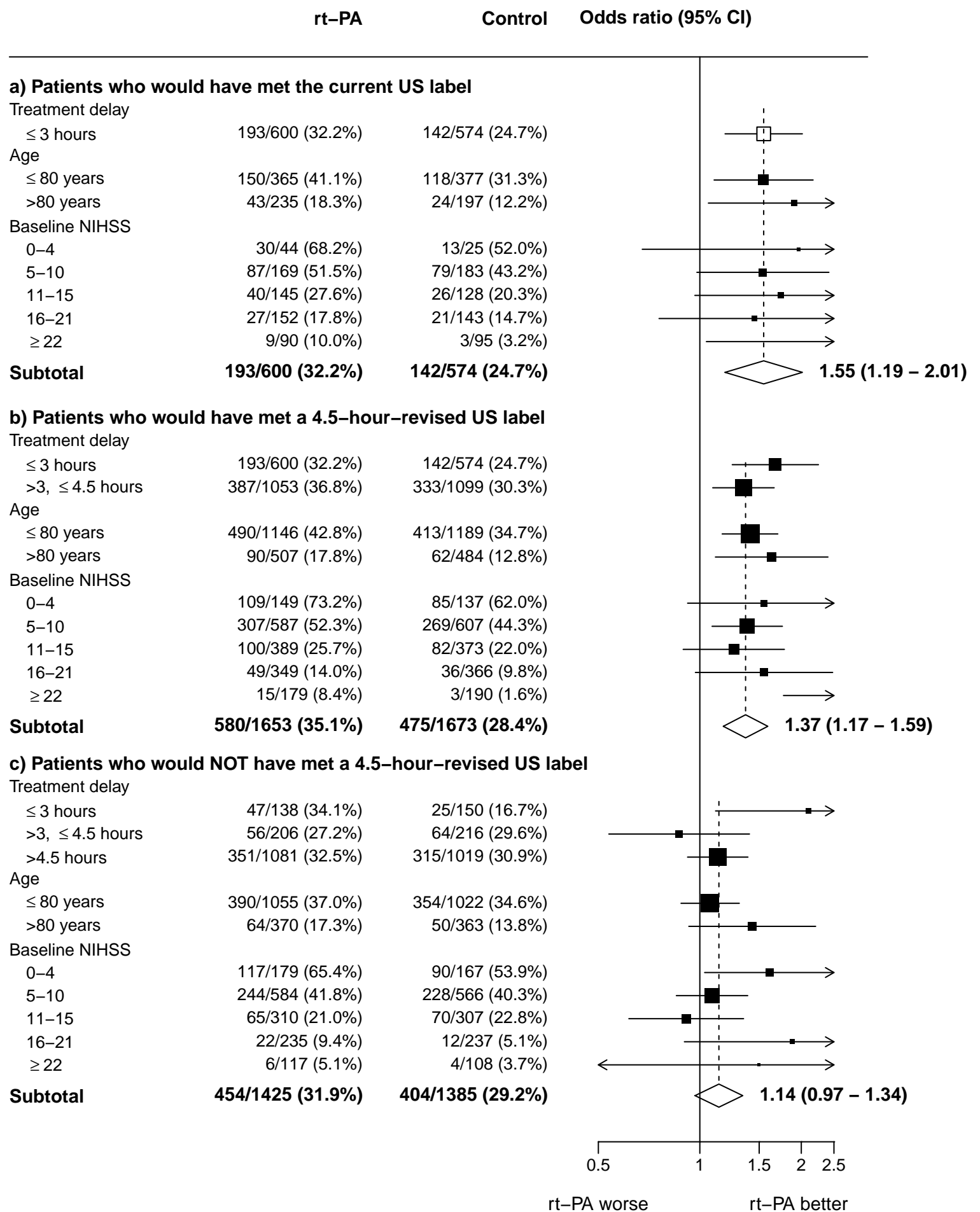
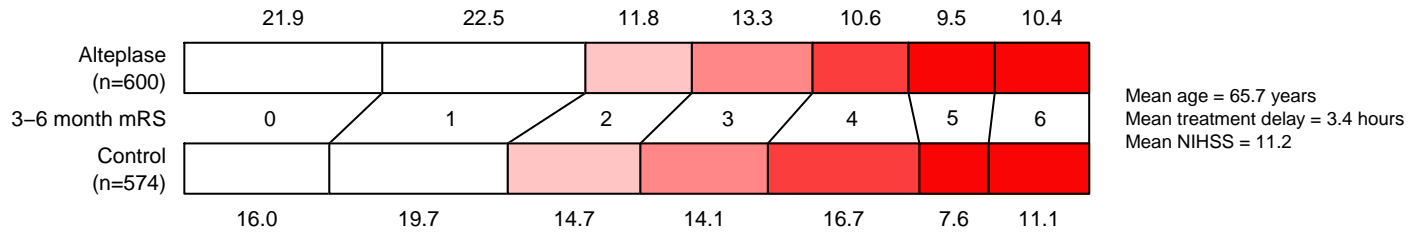


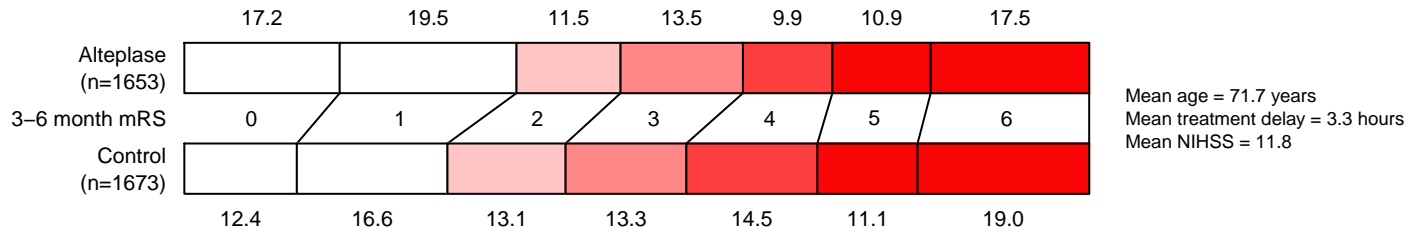
Figure 4: Distribution of mRS at 3–6 months by randomised treatment allocation in groups defined by the current and extended labels in the EU and US

EU label

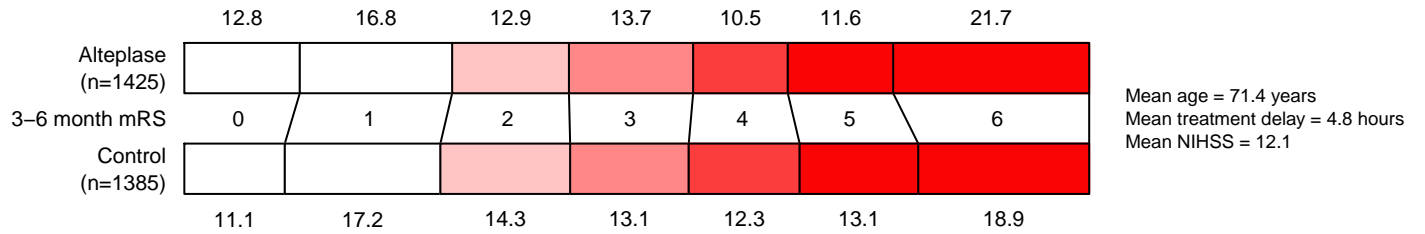
a) Patients who would have met the current EU label



b) Patients who would have met an age-revised EU label

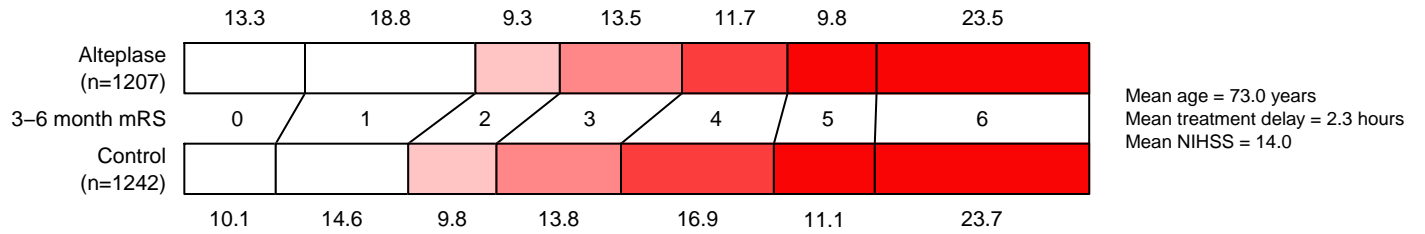


c) Patients who would NOT have met an age-revised EU label

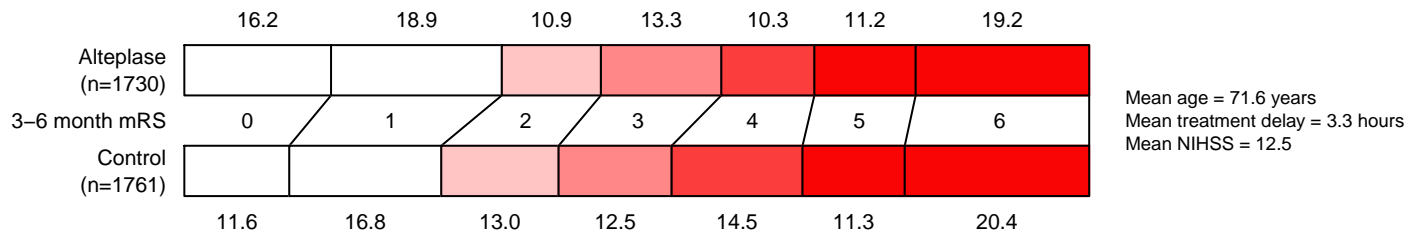


US label

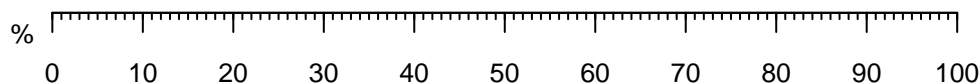
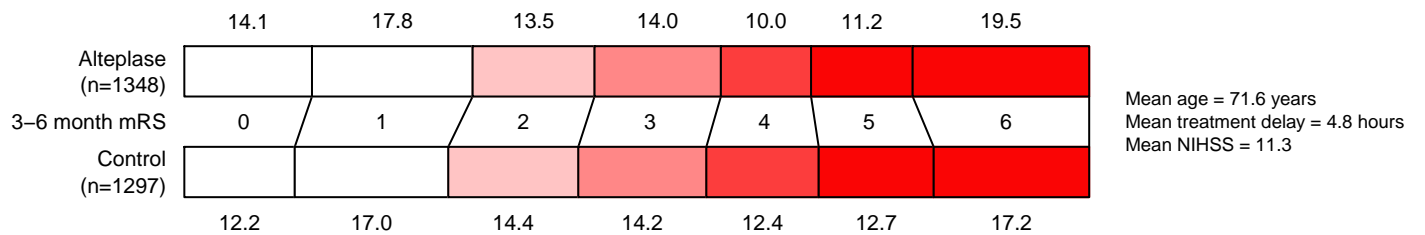
a) Patients who would have met the current US label



b) Patients who would have met a 4.5h-revised US label



c) Patients who would NOT have met a 4.5h-revised US label



* mRS score ascertained at 6 months for IST-3 and 3 months for other trials.