



THE UNIVERSITY *of* EDINBURGH

Edinburgh Research Explorer

Intrinsic and adaptive myelination - a sequential mechanism for smart wiring in the brain

Citation for published version:

Bechler, ME, Swire, M & Ffrench-Constant, C 2017, 'Intrinsic and adaptive myelination - a sequential mechanism for smart wiring in the brain', *Developmental neurobiology*. <https://doi.org/10.1002/dneu.22518>

Digital Object Identifier (DOI):

[10.1002/dneu.22518](https://doi.org/10.1002/dneu.22518)

Link:

[Link to publication record in Edinburgh Research Explorer](#)

Document Version:

Peer reviewed version

Published In:

Developmental neurobiology

General rights

Copyright for the publications made accessible via the Edinburgh Research Explorer is retained by the author(s) and / or other copyright owners and it is a condition of accessing these publications that users recognise and abide by the legal requirements associated with these rights.

Take down policy

The University of Edinburgh has made every reasonable effort to ensure that Edinburgh Research Explorer content complies with UK legislation. If you believe that the public display of this file breaches copyright please contact openaccess@ed.ac.uk providing details, and we will remove access to the work immediately and investigate your claim.



Intrinsic and adaptive myelination – a sequential mechanism for smart wiring in the
brain

Marie E. Bechler^{ID}, Matthew Swire, and Charles ffrench-Constant

MRC Centre for Regenerative Medicine and MS Society Edinburgh Centre for
Edinburgh Research, The University of Edinburgh, 5 Little France Drive, Edinburgh,
EH16 4UU, United Kingdom.

Short Title: Intrinsic and adaptive myelination mechanisms

Corresponding Author:

Marie E. Bechler

MRC Centre for Regenerative Medicine
MS Society Edinburgh Centre for Edinburgh Research
The University of Edinburgh
5 Little France Drive
Edinburgh
EH16 4UU
United Kingdom

mbechler@staffmail.ed.ac.uk

This article has been accepted for publication and undergone full peer review but has not been through the copyediting, typesetting, pagination and proofreading process which may lead to differences between this version and the Version of Record. Please cite this article as an 'Accepted Article', doi: 10.1002/dneu.22518

© 2017 Wiley Periodicals, Inc.

Received: Jun 12, 2017; Revised: Jul 28, 2017; Accepted: Aug 19, 2017

Abstract

The concept of adaptive myelination – myelin plasticity regulated by activity – is an important advance for the field. What signals set up the adaptable pattern in the first place?

Here we review work that demonstrates an intrinsic pathway within oligodendrocytes requiring only an axon-shaped substrate to generate multilayered and compacted myelin sheaths of a physiological length. Based on this, we discuss a model we proposed in 2015 which argues that myelination has two phases –intrinsic and then adaptive – which together generate “smart wiring” in which active axons become more myelinated. This model explains why prior studies have failed to identify a signal necessary for central nervous system myelination and argues that myelination, like synapses, might contribute to learning by the activity-dependent modification of an initially hard-wired pattern.

Introduction – the concept of adaptive myelination

Myelin-forming oligodendrocytes are found in both white and gray matter of the central nervous system (CNS), and the internodes or sheaths they form around axons represents a spectacular cell-cell interaction that enables rapid saltatory conduction. This is facilitated by the concentration of voltage dependent sodium channels at the gap between sheaths - the nodes of Ranvier. The prevailing view since the discovery of this mechanism in 1949 has been that both internode length and thickness are optimized simply for maximum conduction velocity and the reduction of energy consumption (Huxley and Stämpfli, 1949; Rushton, 1951). Recently, however, a number of observations challenge this view and point to additional roles of oligodendrocytes and

myelination is a fundamental property of the CNS - to modify circuits in response to experience. First, new oligodendrocytes are generated throughout life from actively dividing precursor cells (Rivers et al., 2008; Hughes et al., 2013; Young et al., 2013), and formation of these newly differentiated cells improves motor learning (McKenzie et al., 2014; Xiao et al., 2016). Second, myelination in the cortex is reduced by social isolation (Liu et al., 2012; Makinodan et al., 2012), with the associated social avoidance behavior rescued by the muscarinic antagonist clemastine that increases oligodendrocyte differentiation (Liu et al., 2016). Third, increasing activity using optogenetics enhances oligodendrocyte precursor cell proliferation, myelination, and improves motor performance (Gibson et al., 2014). Fourth, myelination of pyramidal projection neuron axons in cortex is discontinuous, suggesting a mechanism by which the myelin formed by newly generated oligodendrocytes could alter axonal conduction velocities (Tomassy et al., 2014). Last, magnetic resonance imaging studies of adult humans learning complex motor tasks shows changes in associated axonal tracts consistent with increased myelination (Scholz et al., 2009; Sampaio-Baptista et al., 2013). Together, these observations have led to the concept of adaptive myelination – changes in oligodendrocytes and the myelin they form in response to activity that enhance conduction and so reinforce active pathways. They do not, however, explain how the adaptable pattern of myelination is generated in the first place. Here, by reviewing relevant literature on myelin sheath formation and plasticity, we address this question and develop a model in which sequential intrinsic and adaptive pathways create “smart” wiring that changes in response to activity and which, alongside synaptic plasticity, enables learning.

The unsuccessful search for axonal signals necessary for CNS myelination

A prediction of the adaptive myelination hypothesis is that, as is implicit in the name, a prior pattern of myelin is created by an independent set of pathways and signals. Based on work in the peripheral nervous system (PNS), where the level of neuregulin (NRG) 1 type III expression on the axon determines both whether the axon is myelinated by Schwann cells and the thickness of the sheath formed (Michailov et al., 2004; Taveggia et al., 2005), much attention has focused on the identification of axonal signals in the CNS. However, despite more than a decade of study, no such signals have been found. Conditional knockout mice (cKO) lacking NRG 1 in neurons, or the NRG ErbB receptor in oligodendrocytes, show no such requirement for myelination in the CNS. Although overexpression of NRG in neurons does increase myelin sheath thickness, showing that oligodendrocytes (like Schwann cells) can respond to NRG signaling by increasing myelination, the cKO experiments show clearly that NRG is not essential for the establishment of normal myelin thickness in white matter (Brinkmann et al., 2008). Extracellular matrix receptors of the integrin family contribute to the initiation of myelination, but again are not required for normal white-matter myelination (Benninger et al., 2006; Câmara et al., 2009). Finally, NMDA glutamate receptors localized in the myelin sheath (Micu et al., 2006; 2016; Saab et al., 2016) can enhance myelination in cell culture (Wake et al., 2011; Lundgaard et al., 2013) yet are dispensable for in vivo myelination as revealed by oligodendrocyte-specific cKO mice (De Biase et al., 2011).

An intrinsic myelination program requires only an appropriate physical substrate for myelin sheath formation.

Given the lack of any known necessary instructive molecules, an alternative hypothesis that oligodendrocytes have intrinsically encoded information to carry out myelin sheath formation, not requiring extrinsic molecular instruction, warrants consideration. The notion of an intrinsically encoded program for oligodendrocyte precursor cells' development into mature cells is not new. It was shown decades ago that oligodendrocytes have an intrinsic timing program for differentiation and the generation of specialized membranes of similar molecular composition to myelin in the absence of neuronal instruction (Mirsky et al., 1980; Szuchet et al., 1983; Dubois-Dalcq et al., 1986; Gard and Pfeiffer, 1989).

While the flat monolayers of membrane generated by oligodendrocytes in culture, albeit similar in composition to myelin sheaths formed in tissue, are far from the 3D architecture of myelin sheaths, several studies have demonstrated the capacity of oligodendrocytes to form an initial layer of membrane wrapping around axonal-sized, cylindrically shaped substrates. Neuron-free, axonal shape mimetics have been created with carbon, glass, and lactide/glycoside copolymers, as well as vertical compressed silica micropillars, and primary oligodendrocytes cultured with these 3D substrates differentiated and spread membranes around the cylindrical or conical surfaces (Althaus et al., 1987; Bullock and Rome, 1990; Howe, 2006; Mei et al., 2014). These studies did not, however, demonstrate the formation of myelin sheaths or internodes, elaborate membranes that spirally wrap around axons in numerous membrane bilayers. This leaves the open question of whether further signals are required to generate multilamellar myelin sheath structures akin to those in vivo. Despite the absence of evidence for the molecules instructing myelin sheath formation, the remarkable architectural feat of oligodendrocytes was something presumed to only be possible by

the direct interaction with axons and axonal molecules. While the demonstration with electron microscopy that multilamellar compact membranes could form on chemically fixed axons showed that active cues from neurons are not essential (Rosenberg et al., 2008), cross-linked axonal cell surface molecules were present, still leaving open the possibility that cell-cell adhesion molecules or other membrane components instruct myelin formation. A key recent advance has been the development of neuron-free, electrospun polystyrene and poly-L-lactic acid microfiber oligodendrocyte cultures, demonstrating the capacity for oligodendrocytes to generate compact, multilamellar myelin membranes ensheathing microfibers (Lee et al., 2012a; 2013; Bechler et al., 2015). This data finally provides conclusive evidence that oligodendrocytes, in the presence of appropriate physical cues, contain the encoded information to generate the proper three-dimensional architecture of myelin – in other words that myelin sheath formation is driven by an intrinsic pathway.

The intrinsic myelination program generates myelin sheaths of physiological length.

What then about the conduction velocity-altering properties –placement, length, and thickness--of these myelin sheaths; are these under axonal control or does an intrinsic program also regulate these properties? Surprisingly, we found that cortical oligodendrocytes in microfiber cultures generated myelin sheath lengths equivalent to that on dorsal root ganglia neurons of comparable diameters and similar to prior reports of myelin sheath lengths in the mouse cortex (Murtie et al., 2007; Bechler et al., 2015). While each oligodendrocyte formed significantly fewer sheaths than can be found in vivo, this raises the intriguing possibility that at least the fundamental property of myelin sheath length is set prior to oligodendrocyte precursor differentiation. However,

would that be consistent with the heterogeneity of myelin sheath distribution and sizes seen across the CNS? If oligodendrocyte precursor cells, upon initiating differentiation, do not require extrinsic molecular instruction to form myelin sheaths with similar properties to that found on neurons, how is myelin sheath variation achieved in the CNS? Current work supports two possible intrinsic mechanisms to instruct myelin sheath size: oligodendrocytes sense and respond to the physical size of axons, and oligodendrocyte populations exist with heterogeneous intrinsic programs. The evidence for and predictions of each are discussed below.

Physical cues dictate myelin sheath length

Axon caliber has been a key property proposed to correlate with myelin sheath length and thickness. Numerous anatomical studies, including those of spinal cord white matter in a variety of vertebrates, have documented the relationship of axon diameter with the associated myelin sheath length and thickness, demonstrating a positive correlation (e.g. Duncan, 1934; Hildebrand and Hahn, 1978; also reviewed in Hildebrand et al., 1993). Thickness (number of lamellae) of myelin sheaths has been stereotyped for axon diameters by the so-called g-ratio (ratio of axon diameter to the outer diameter of the myelin sheath) averaging around 0.7. Further studies also indicate internode length increases with axonal diameter (McDonald and Ohlrich, 1971; Murray and Blakemore, 1980; Ibrahim et al., 1995; Butt et al., 1998). While axonal molecules could increase with larger axon calibers, our fiber experiments show that the physical diameter of the axons itself may serve as a signal that determines myelin sheath length. Isolated rodent oligodendrocytes show a remarkable response to increase myelin sheath length in accordance to different diameter microfibers in the absence of additional signals

(Bechler et al., 2015). While it remains to be determined if the number of myelin layers (lamellae) are similarly adjusted purely by physical fiber size, this work suggests that oligodendrocytes have curvature-sensitive mechanisms to regulate the lateral expansion of myelin membranes along a microfiber (or axon). However, while many studies have shown a linear correlation between axon caliber and internode length or thickness as a simple curvature-sensing model would predict, exceptions to this rule exist. The smallest and largest caliber axons measured (<1 micron and >8 micron diameters), exhibit non-linear changes in sheath length or thickness (Hildebrand and Hahn, 1978). For thicker axons, this might be explained by the fact that, once above a certain threshold diameter size, the change in curvature sensed by an oligodendrocyte is unlikely to be significant, and one might therefore expect a plateau where increasing sheath size will be subtle in comparison to those seen with smaller caliber axons. This would not, however, explain the loss of correlation on thinner axons. Additionally, myelin sheath lengths become steadily shorter in auditory pathway neurons as they approach the axonal terminal synapsing onto the giant Calyx of Held (Ford et al., 2015). These rule-defying examples showing variance in both lengths and thickness are indicative that other factors beyond physical cues further instruct or fine-tune sheath sizes.

Intrinsic properties of heterogeneous oligodendrocytes may determine myelin sheath length

The presence of heterogeneously programmed oligodendrocyte populations is another possible contributor to CNS myelin sheath variation. Direct evidence for oligodendrocyte heterogeneity has been demonstrated with genetic lineage tracing and

by molecular profiling. Lineage tracing studies have demonstrated the presence of dorsal and ventral oligodendrocyte precursor cell populations arising from distinct subventricular zones at different times during mouse development (Kessaris et al., 2006; Tripathi et al., 2011; also see reviews: Richardson et al., 2006; Rowitch and Kriegstein, 2010). To address whether these populations were redundant or destined to distinct fates, ablation of each population was conducted. In the absence of each population, the reciprocal pool of OPCs repopulated the CNS regions and gross myelination was unperturbed (Kessaris et al., 2006), indicating that the cell populations can compensate for the loss of the others to a certain extent. Whether these populations maintain an independent identity, epigenetic program, or have functional differences has yet to be demonstrated. On a transcriptional level, recent single cell RNA-sequencing of the oligodendrocyte lineage in brain and spinal cord gray matter regions, has shown six transcriptionally distinct clusters of oligodendrocytes present throughout the period of developmental myelination (Marques et al., 2016). It is unknown at present to what extent the six populations may represent distinct myelinating oligodendrocyte populations, a continuum of maturation, or have different transcriptional profiles merely based on local cell-cell interactions - important areas for further work.

The notion that intrinsic differences such as these between sub-populations of oligodendrocytes might instruct differing sheath profiles was raised by the studies of Pío del Río-Hortega nearly a century ago, who used myelin sheath length and number to distinguish four types of oligodendrocytes (del Río-Hortega, 1928; Butt et al., 1998).

The hypothesis that oligodendrocyte populations are intrinsically restricted to form sheaths on axons of a particular diameter or a particular number of myelin sheaths has been tested in two ways. First, transplantation of oligodendrocytes from rodent optic

nerve, which normally myelinate relatively uniform, small caliber axons, into the spinal cord, with much larger and varied axon calibers, demonstrated that oligodendrocytes are not tightly restricted by an intrinsic program to myelinate a select population of axons of either select caliber or function (Fanarraga et al., 1998). Second, experiments have been done analyzing oligodendrocytes in genetically manipulated zebrafish that contain extra, large caliber axons. Oligodendrocytes in the zebrafish ventral spinal cord primarily generate one to three myelin sheaths on either large caliber axons or many myelin sheaths on small caliber axons. Manipulation of the number of large caliber axons, however, stimulated oligodendrocytes to ensheath both the supernumerary large axons as well as the small diameter axons (Almeida et al., 2011).

While these experiments indicate that oligodendrocytes are not differentially programmed to only myelinate either small or large caliber axons, the myelin sheaths produced by optic nerve oligodendrocytes transplanted into spinal cord were thinner than that of local spinal cord oligodendrocytes (Fanarraga et al., 1998), consistent with the existence of heterogeneity within white matter oligodendrocytes in the programs that determine sheath size. Cross-transplantation has also been used to examine heterogeneity between adult white matter and gray matter oligodendrocytes, demonstrating that precursor populations are not equivalent in their behavior. Heterotopic and orthotopic transplantation of oligodendrocytes progenitors residing in cortical gray or white matter into the same or reciprocal region, showed oligodendrocytes vary in rates of proliferation and differentiation, dependent upon the site of transplantation (Viganò et al., 2013).

Together these experiments provide support for the idea that differences in oligodendrocyte morphology within the CNS reflect, at least in part, intrinsic differences in the programs that instruct sheath formation. Direct support for this comes from the isolated oligodendrocyte culture experiments with microfibers. These established that oligodendrocytes from the rodent cortex and spinal cord maintain distinct programmed behavior that determines myelin sheath lengths. Spinal cord oligodendrocytes generated much longer sheath lengths than cortical oligodendrocytes when introduced to the same physically and chemically defined environment as well as when cells were added to equivalent neuronal and ex vivo slice cultures, mirroring observations of relative sheath lengths in vivo (Bechler et al., 2015). While key questions such as when these oligodendrocyte precursor populations became intrinsically different, what the molecular differences are between these populations, and whether these differences persist throughout the age of animals remain to be addressed, this result is important in that it shows the diversity of oligodendrocyte morphology highlighted by del Río-Hortega is not solely the result of extrinsic environmental factors but also reflects intrinsic differences between the cell populations.

Intrinsic and adaptive myelination

Together with the wealth of data indicating oligodendrocyte myelination is affected by neuronal activity, these findings that oligodendrocytes only require physical dimensions to generate myelin sheaths (Lee et al., 2012a; Bechler et al., 2015) with expected sheath lengths led to our proposed model for CNS myelination: an oligodendrocyte-intrinsic program establishes a basic pattern of myelination that can then undergo adaptation to modify myelin sheath number and/or properties (Bechler et al., 2015) (Figure 1). As

supported by microfiber cultures, this model proposes that in the absence of molecular cues from axons, oligodendrocytes will generate myelin sheaths based upon a transcriptional (intrinsic) program established prior to differentiation. This transcriptionally regulated program establishes a basal sheath number and/or size.

● Oligodendrocyte processes could then respond locally to adapt myelin sheath number and size in response to extrinsic cues, such as those linked to activity, from the corresponding axon.

A prediction of this model is that that reduced extrinsic (adaptive) signals would still allow for myelin sheath formation, simply with a reduction in sheath size and/or number. This was initially shown over 50 years ago by Gyllensten and Malmfors who demonstrated that dark rearing mice, thus reducing the activity of retinal ganglion cells, reduced the number of myelinated axons (Gyllensten and Malmfors, 1963). More recently two further sets of experiments confirm the predicted result of the model. First, real time live-imaging studies in zebrafish have shown that silent neurons do indeed acquire myelin sheaths, and that these silent neurons in zebrafish acquire fewer, shorter sheaths than those seen on active neurons (Hines et al., 2015; Mensch et al., 2015). Second, work in mice from the Chan lab has shown that decreasing neuronal activity within the optic nerve by monocular deprivation also does not prevent myelination but rather results in shorter myelin sheath lengths than that seen on active neurons, reducing conduction velocity (Etxeberria et al., 2016). Interestingly, the influence of adaptive signals on myelin sheaths formed only appears to occur on a subset of neuronal subtypes (Koudelka et al., 2016). Therefore, heterogeneity from neuronal subtypes may provide variation in the relative contribution of adaptive signals that influence myelination.

This model, although speculative, has value in that it reconciles current experimental data on fiber experiments, on the axonal signals involved in myelination, and on adaptive myelination. It also provides a conceptual framework for thinking about myelination in a similar way to synapse formation and plasticity, with an initially hard-wired pattern being modified by experience so as to enable CNS plasticity and learning – in other words to create smart wiring.

An important prediction from this model is that studies seeking an axonal signal necessary for myelination will fail - there are no such signals other than the appropriately sized physical substrate. These studies therefore now need to be re-evaluated asking not whether the molecule under study instructs myelination but whether it contributes to the signals that subsequently adapt the sheaths formed by the intrinsic pathway. Additionally, the model generates three further questions that require consideration. First, why are all axons and dendrites in the CNS not myelinated? Second, over what timescales do the intrinsic and adaptive mechanisms operate? Third, is the balance between the intrinsic and adaptive pathways that shape the ultimate morphology of each oligodendrocyte the same across different regions of the CNS? The re-evaluation of signals and these three questions will now be considered in turn.

Axonal signals adapt rather than instruct myelin sheaths

The signals previously described as dispensable in the initial cKO studies may have their major role in adaptive myelination as illustrated by work on two of the signaling mechanisms - the NMDA receptor and the NRG-ErbB pathway. A role for the oligodendrocyte NMDA receptor has been suggested to detect the vesicular release of

glutamate by active axons (Ziak et al., 1998; Káradóttir et al., 2005; Micu et al., 2016), and blocking vesicular release either in vitro (Wake et al., 2011; 2015) or in zebrafish (Hines et al., 2015; Mensch et al., 2015) results in a reduction in MBP mRNA translation or sheath elongation/initiation, respectively. Roles for this receptor have also been suggested in myelin compaction (Micu et al., 2016) and in calibrating metabolic support provided by the oligodendrocyte to the axon in response to activity (Frühbeis et al., 2013; Saab et al., 2016). To reveal the true role of this receptor in myelination it will be necessary to extend the studies reporting either no myelin phenotype in the NMDA receptor cKO mouse (De Biase et al., 2011) or a transient delay in optic nerve myelination (Saab et al., 2016) with experiments examining areas of the CNS such as the cortex where adaptive myelination has been demonstrated.

Although dispensable for myelination, the NRG-ErbB pathway has been directly linked to adaptive myelination: social experience regulates the expression of NRG, and mice expressing a dominant negative ErbB4 receptor in oligodendrocytes fail to show the changes in myelination associated with social experience (Makinodan et al., 2012).

NRG signaling could be linked to activity by the NMDA receptor as, in myelinating co-cultures, exposure to NRG switches the oligodendrocytes to an NMDA receptor-dependent myelination pathway, with the receptor inhibitor MK801 blocking myelination (Lundgaard et al., 2013). A potential mechanism for this switch is provided by the finding that NRG down regulates expression of the inhibitory NR3 subunit of the NMDA receptor (Lundgaard et al., 2013). Further examination of the role of this subunit in myelination is required. Such a switch could explain the apparently contradictory finding that the loss of NRG on axons has no effect on myelination, while overexpression increases myelin sheath thickness (Brinkmann et al., 2008). We

speculate that in the absence of NRG the myelination observed reflects the intrinsic pathway while a subsequent increase in NRG expression activates adaptive myelination, whereby axonal activity drives sheath thickening.

In addition to work focusing on signals previously evaluated in the context of their necessity for myelination, recent studies have identified other activity-related signals that may adapt myelin – brain-derived neurotrophic factor (BDNF), GABA and ATP. BDNF is secreted from cortical neurons following optogenetic stimulation (Venkatesh et al., 2015) and, like NRG, switches oligodendrocytes to a form of myelination dependent upon NMDA receptors (Lundgaard et al., 2013). While global BDNF KO mice develop both axonal diameter retardation and hypomyelination (Cellerino et al., 1997; Djalali et al., 2005), oligodendrocyte-specific loss of the BDNF receptor, TrkB, generates thinner myelin (Wong et al., 2013), consistent with a role in adaptive myelination. Cortical GABA-positive interneurons, with larger axon calibers than non-GABAergic neurons, have shorter myelin sheaths (Micheva et al., 2016), and a role for GABA in regulating this sheath length is suggested by the finding that blocking endogenous GABA in cortical slices increased myelin sheath length (Hamilton et al., 2017). DRG neuron cultures secrete ATP in an activity dependent manner promoting myelination (Stevens et al., 2002). Co-culture studies have shown that this ATP stimulates astrocytic secretion of LIF, promoting myelination in response to neuronal activity (Ishibashi et al., 2006). This raises an important question as to whether a network of other signals from the non-myelinating support cells of the CNS that respond to activity, such as astrocytes or endothelial cells, also regulate adaptive myelination.

Why are all axons and dendrites in the CNS not myelinated?

If the initial formation of myelin sheaths is an intrinsic process requiring only the presence of an appropriate structure, one might expect all axons and dendrites in the CNS to be myelinated. Work from the Chan lab has identified two possible mechanisms that prevent this: size and inhibitory molecules. Using the microfiber assay, this group showed that only fibers with a diameter of more than 0.4 μm permit the formation of sheaths (Lee et al., 2012a). Taken together with our evidence that sheath lengths on larger microfibers increase with fiber diameter (Bechler et al., 2015), this shows that oligodendrocytes are able to detect the diameter of the structure to be myelinated, requiring a minimum diameter to initiate the process. The size threshold of 0.4 μm is similar to that above which myelination is observed in vivo (Duncan, 1934). Further support for a size threshold mechanism operating in vivo comes from elegant experiments from the Nave lab in which the PI3 kinase signaling inhibitor PTEN is removed from neurons. This leads to an increase in axonal diameter, whereby previously unmyelinated axons in the cerebellum increase in size and, at the same time, become myelinated (Goebbels et al., 2016). Second, the presence of inhibitors of myelination has been demonstrated on dendrites and neuronal cell bodies. By screening candidates identified by RNA sequencing, the adhesion molecule jam2 was identified as an inhibitory signal expressed in dendrites and neuronal soma (Redmond et al., 2016). The widespread presence of such inhibitors could therefore explain why myelin is restricted to axons in the CNS. The presence of inhibitory molecules on axons has also been suggested as a possible cause of the failure of re-myelination, the effective regenerative process that can follow demyelination in the mammalian CNS. Here, PSA-NCAM expressed on the surface of non-remyelinated axons in multiple sclerosis lesions prevented myelination in culture (Charles et al., 2000; Charles, 2002). Both size and

inhibitor-based mechanisms do not, however, explain the observation of discontinuous myelination of axons within cortical gray matter, as shown for pyramidal neuron projection axons (Tomassy et al., 2014). This intermittent pattern occurs despite the presence of abundant oligodendrocytes in gray matter. Inhibitors would not explain discontinuous myelination unless they were present in the pattern of stripes along the axon. While axons do have the ability to cluster molecules present at and around the nodes of Ranvier, there is no current evidence of a broader organization of stripes that might result in an inhibitor-based pattern of discontinuous myelination. How this is achieved and the biological relevance of such myelin profiles remains an extremely important question for the field.

Over what timescales do the intrinsic and adaptive mechanisms operate?

Our model proposes that an already established, intrinsically encoded program of myelin sheath formation can be tuned or modified by extrinsic signals. This intrinsic program is established prior to differentiation, and adaptive myelination likely occurs during or after differentiation has begun. A remaining question is therefore one of timing - are oligodendrocytes capable of adapting myelin sheath formation throughout their lifetime, or is there a critical time period when oligodendrocytes are receptive to extrinsic influences? The answer will be important, having implications for the potential roles and limitations of myelin adaptation in brain plasticity, learning, and myelin regeneration. However the majority of the current evidence for adaptive myelination by extrinsic signals comes from a combination of *in vitro* and *in vivo* studies during the peak of developmental myelination (Wake et al., 2011; Hines et al., 2015; Mensch et al., 2015), and this focus on developing systems means the question of timing remains unresolved.

Live imaging studies and studies in older animals will be required to resolve this issue, but the current evidence supports both timescales for adaptive myelination. In support of a critical period, two weeks of social isolation for mice from postnatal age 21 to 35 affected behavior as well as myelin sheath number, length and thickness, while two weeks of social isolation from postnatal day 35 did not affect behavior nor myelination (Makinodan et al., 2012). As the cortex is being actively myelinated at this time, this is consistent with the idea of adaptive influences being limited to differentiating and newly formed oligodendrocytes. A similar study by Liu and colleagues appears at first sight not to show such a ‘critical window’, as myelin sheath changes were observed with social isolation of mice for 8 weeks from postnatal day 35 (Liu et al., 2012). Here, though, the length of social isolation was a major difference (2 weeks versus 8 weeks), raising the possibility that the result may still reflect the generation of new oligodendrocytes, but at the slower rate seen in adult mice (Dimou et al., 2008; Rivers et al., 2008; Young et al., 2013). Both studies are therefore consistent with activity-dependent adaptation of myelin sheaths being most or only effective in differentiating and newly formed oligodendrocytes, with adaptive effects being substantially slower after developmental myelination simply because the rate of oligodendrocyte generation is less. Consistent with the idea that myelin sheath number and properties are formed during a ‘critical window’ soon after oligodendrocyte differentiation, live imaging studies in zebrafish and primary rodent oligodendrocyte-neuron co-cultures have indicated that sheath numbers (one parameter under the influence of adaptive myelination) are set and established within a 5-6 hour time window of an oligodendrocyte’s life span (Watkins et al., 2008; Czopka et al., 2013). Furthermore, optogenetic stimulation of the adult mouse motor cortex results in an increase in oligodendrocyte precursor cells followed by an increase in myelin thickness and modified motor behavior, which can be

prevented by the addition of histone deacetylase inhibitors that block the formation of new oligodendrocytes (Gibson et al., 2014). Evidence that new oligodendrocytes are important for learning – an assumed consequence of adaptive myelination – comes from the finding by the Richardson lab that newly-formed adult oligodendrocytes enhance motor learning (McKenzie et al., 2014; Xiao et al., 2016). However, while this might suggest that new sheaths contribute to an adaptive myelination process that underpins learning (McKenzie et al., 2014), the very rapid emergence of differences in motor performance between control animals and those unable to form new oligodendrocytes (a few hours) would mean that any myelin formation responsible would need to be extremely rapid (Xiao et al., 2016). While this is certainly possible – oligodendrocytes complete initial sheath formation within 5-6 hours (Watkins et al., 2008; Czopka et al., 2013) - it highlights the possibility that other functions of the oligodendrocyte that might not require the formation of a sheath such as metabolic support of the axon or the formation of pre-nodes (Kaplan et al., 1997; 2001; Fünfschilling et al., 2012; Lee et al., 2012b; Freeman et al., 2015), could also be responsible for the observed effect on motor learning.

In support of adaptation occurring after myelination is complete, transgenic overexpression experiments suggest that myelin sheath thickness and number can be increased in already mature oligodendrocytes. Activating Akt or MAPK signaling in differentiated oligodendrocytes engenders a degree of plasticity within already-formed sheaths as evidenced by expansion of the leading edge of the inner myelin layer (the inner tongue), an increase in myelin thickness or the addition of extra myelin sheaths (Goebbels et al., 2010; Snaidero et al., 2014; Jeffries et al., 2016). While each of these studies generates sustained signaling within the oligodendrocytes that is unlikely in a physiological situation, they do

highlight the need to address whether already established oligodendrocytes and myelin sheaths can undergo modification in response to extrinsic cues.

Is the balance between the intrinsic and adaptive pathways that will shape the ultimate morphology of each oligodendrocyte the same across different regions of the CNS?

A final question posed by a model in which oligodendrocyte morphology reflects the contributions of both intrinsic and adaptive pathways is whether the role of each is similar throughout the CNS. Different oligodendrocyte populations may have hard-wired properties that not only dictate the number and size of myelin sheaths formed, but also how they respond to varying adaptive signals. Oligodendrocyte populations identified with single-cell RNA sequencing show heterogeneity in expression of numerous ion channels, including glutamatergic channels (Marques et al., 2016), suggesting that different oligodendrocyte populations will have differential responses to neuronal activity. This will be interesting work for further study to understand how myelin adaptation occurs throughout the CNS. The most striking difference may be between white and gray matter oligodendrocytes. C¹⁴ based turnover analyses in humans show that gray and white oligodendrocytes differ, with later expansion and greater turnover of the former population (Yeung et al., 2014). In rodents, differences between gray and white matter oligodendroglial cells were also demonstrated with transplantation studies (Viganò et al., 2013). Oligodendrocytes in the two regions are therefore behaviorally distinct and, given the role of gray matter oligodendrocytes in behaviors regulated by adaptive myelination as well as the intermittent myelin profile permitting de novo sheath formation (Tomassy et al., 2014), we speculate that adaptive mechanisms will play a greater role in determining final oligodendrocyte morphology in

gray matter. There is an intuitive logic to this in that the principal function of white matter tracts is rapid impulse conduction, as would be achieved by simply optimizing sheath length and thickness in proportion to axon diameter, whilst in gray matter a greater variation allows the alterations in circuit function required for more intricate connectivity resulting from activity-dependent plasticity.

Conclusions

The demonstration that myelination changes in response to activity was proposed nearly a century ago, and the recent confirmation by a variety of technologies is an important conceptual advance for the field. Allied to the demonstration of an intrinsic pathway able to sense microfiber diameter and generate sheaths of physiological length around physical substrates of appropriate size and shape, a model emerges in which myelination, like synaptogenesis, is initially a hard-wired process that is then sculpted by experience. The “smart wiring” so generated could play a significant role in learning, and manipulation of the two phases of myelination during live imaging of single oligodendrocytes combined with examination of behavior and learning will be required to test this. Another area of further study will be remyelination, so as to determine whether myelin formed during regeneration in diseases such as multiple sclerosis shows adaptability, or whether a loss of this contributes to the cognitive changes seen in this and other white matter diseases.

Figure Legend

Figure 1. Model of Intrinsic and Adaptive Myelination.

This proposed model describes two phases of myelination that encompass our current understanding of CNS myelination: intrinsic and adaptive. First, the intrinsic, encoded program within oligodendrocyte precursor cells guides oligodendrocyte differentiation and myelination of axons. During this intrinsic phase, oligodendrocyte processes sense physical axon diameters to select axons and generate myelin sheath lengths corresponding to the caliber, with longer sheaths on larger calibers. The second phase is adaptation of intrinsic myelin sheaths. While the timing is yet unclear, the size and number of myelin sheaths may be modified by signals from active neurons either during or after intrinsic myelination is completed. Extrinsic, adaptive signals allow for further increases to sheath size and number (as shown in the left and right axon) while no such changes occur on silent axons (middle axon). These changes may, in turn, adapt neuronal conduction and reinforce selected circuits, particularly in areas with sparsely myelinated axons. The content and concept for these images were generated by the authors and were designed and illustrated by ScideLight (www.scidelight.com).

References

- Almeida RG, Czopka T, French-Constant C, Lyons DA. 2011. Individual axons regulate the myelinating potential of single oligodendrocytes in vivo. *Development* 138:4443–4450.
- Althaus HH, Burgisser P, Klöppner S, Rohmann A, Schröter J, Schwartz P, Siepl C, Neuhoff V. 1987. Oligodendrocytes ensheath carbon fibres and produce myelin in vitro. *Glial-Neuronal Communication in Development and Regeneration*, Berlin, Heidelberg: Springer Berlin Heidelberg, p 779–798.
- Bechler ME, Byrne L, French-Constant C. 2015. CNS myelin sheath lengths are an intrinsic property of oligodendrocytes. *Curr Biol* 25:2411–2416.
- Benninger Y, Colognato H, Thurnherr T, Franklin RJM, Leone DP, Atanasoski S, Nave K-A, French-Constant C, Suter U, Relvas JB. 2006. beta1-Integrin signaling mediates premyelinating oligodendrocyte survival but is not required for CNS myelination and remyelination. *J Neurosci* 26:7665–7673.
- Brinkmann BG, Agarwal A, Sereda MW, Garratt AN, Müller T, Wende H, Stassart RM,

Nawaz S, Humml C, Velanac V, Radyushkin K, Goebbels S, et al. 2008. Neuregulin-1/ErbB signaling serves distinct functions in myelination of the peripheral and central nervous system. *Neuron* 59:581–595.

Bullock PN, Rome LH. 1990. Glass micro-fibers: a model system for study of early events in myelination. *J Neurosci Res* 27:383–393.

Butt AM, Ibrahim M, Berry M. 1998. Axon-myelin sheath relations of oligodendrocyte unit phenotypes in the adult rat anterior medullary velum. *J Neurocytol* 27:259–269.

Câmara J, Wang Z, Nunes-Fonseca C, Friedman HC, Grove M, Sherman DL, Komiyama NH, Grant SG, Brophy PJ, Peterson A, ffrench-Constant C. 2009. Integrin-mediated axoglial interactions initiate myelination in the central nervous system. *J Cell Biol* 185:699–712.

Cellerino A, Carroll P, Thoenen H, Barde YA. 1997. Reduced size of retinal ganglion cell axons and hypomyelination in mice lacking brain-derived neurotrophic factor. *Mol Cell Neurosci* 9:397–408.

Charles P. 2002. Re-expression of PSA-NCAM by demyelinated axons: an inhibitor of remyelination in multiple sclerosis? *Brain* 125:1972–1979.

Charles P, Hernandez MP, Stankoff B, Aigrot MS, Colin C, Rougon G, Zalc B, Lubetzki C. 2000. Negative regulation of central nervous system myelination by polysialylated-neural cell adhesion molecule. *Proc Natl Acad Sci USA* 97:7585–7590.

Czopka T, ffrench-Constant C, Lyons DA. 2013. Individual oligodendrocytes have only a few hours in which to generate new myelin sheaths in vivo. *Dev Cell* 25:599–609.

De Biase LM, Kang SH, Baxi EG, Fukaya M, Pucak ML, Mishina M, Calabresi PA, Bergles DE. 2011. NMDA Receptor signaling in oligodendrocyte progenitors is not required for oligodendrogenesis and myelination. *J Neurosci* 31:12650–12662.

Del Río-Hortega P. 1928. Tercera aportacion al conocimiento morfologico e interpretacion funcional de la oligodendroglia. *Mem Real Soc Esp Hist Nat* 40–122.

Dimou L, Simon C, Kirchhoff F, Takebayashi H, Götz M. 2008. Progeny of Olig2-expressing progenitors in the gray and white matter of the adult mouse cerebral cortex. *J Neurosci* 28:10434–10442.

Djalali S, Höltje M, Grosse G, Rothe T, Stroh T, Grosse J, Deng DR, Hellweg R, Grantyn R, Hörtnagl H, Ahnert-Hilger G. 2005. Effects of brain-derived neurotrophic factor (BDNF) on glial cells and serotonergic neurones during development. *J Neurochem* 92:616–627.

Dubois-Dalcq M, Behar T, Hudson L, Lazzarini RA. 1986. Emergence of three myelin proteins in oligodendrocytes cultured without neurons. *J Cell Biol* 102:384–392.

Duncan D. 1934. The importance of diameter as a factor in myelination. *Science* 79:363–363.

Etxeberria A, Hokanson KC, Dao DQ, Mayoral SR, Mei F, Redmond SA, Ullian EM, Chan JR. 2016. Dynamic modulation of myelination in response to visual stimuli alters optic nerve conduction velocity. *J Neurosci* 36:6937–6948.

Fanarraga ML, Griffiths IR, Zhao M, Duncan ID. 1998. Oligodendrocytes are not inherently programmed to myelinate a specific size of axon. *J Comp Neurol* 399:94–100.

Ford MC, Alexandrova O, Cossell L, Stange-Marten A, Sinclair J, Kopp-Scheinflug C, Pecka M, Attwell D, Grothe B. 2015. Tuning of Ranvier node and internode properties in myelinated axons to adjust action potential timing. *Nat Comm* 6:1–14.

Freeman SA, Desmazières A, Simonnet J, Gatta M, Pfeiffer F, Aigrot MS, Rappeneau Q, Guerreiro S, Michel PP, Yanagawa Y, Barbin G, Brophy PJ, et al. 2015. Acceleration of conduction velocity linked to clustering of nodal components precedes myelination. *Proc Natl Acad Sci USA* 112:E321–E328.

Frühbeis C, Fröhlich D, Kuo WP, Amphornrat J, Thilemann S, Saab AS, Kirchhoff F, Möbius W, Goebbels S, Nave K-A, Schneider A, Simons M, et al. 2013. Neurotransmitter-triggered transfer of exosomes mediates oligodendrocyte–neuron communication. *PLoS Biol* 11:e1001604–19.

Fünfschilling U, Supplie LM, Mahad D, Boretius S, Saab AS, Edgar J, Brinkmann BG, Kassmann CM, Tzvetanova ID, Möbius W, Diaz F, Meijer D, et al. 2012. Glycolytic oligodendrocytes maintain myelin and long-term axonal integrity. *Nature* 485:517–521.

Gard AL, Pfeiffer SE. 1989. Oligodendrocyte progenitors isolated directly from developing telencephalon at a specific phenotypic stage: myelinogenic potential in a defined environment. *Development* 106:119–132.

Gibson EM, Purger D, Mount CW, Goldstein AK, Lin GL, Wood LS, Inema I, Miller SE, Bieri G, Zuchero JB, Barres BA, Woo PJ, et al. 2014. Neuronal activity promotes oligodendrogenesis and adaptive myelination in the mammalian brain. *Science* 344:487–499.

Goebbels S, Oltrogge JH, Kemper R, Heilmann I, Bormuth I, Wolfer S, Wichert SP, Möbius W, Liu X, Lappe-Siefke C, Rossner MJ, Groszer M, et al. 2010. Elevated phosphatidylinositol 3,4,5-trisphosphate in glia triggers cell-autonomous membrane wrapping and myelination. *J Neurosci* 30:8953–8964.

Goebbels S, Wieser GL, Pieper A, Spitzer S, Weege B, Yan K, Edgar JM, Yagensky O, Wichert SP, Agarwal A, Karram K, Renier N, et al. 2016. A neuronal PI(3,4,5)P3-dependent program of oligodendrocyte precursor recruitment and myelination. *Nat Neurosci* 20:1–9.

Gyllensten L, Malmfors T. 1963. Myelination of the optic nerve and its dependence on visual function—a quantitative investigation in mice. *J Embryol Exp Morph* 11(1):255–266.

Hamilton NB, Clarke LE, Arancibia-Carcamo IL, Kougioumtzidou E, Matthey M, Káradóttir R, Whiteley L, Bergersen LH, Richardson WD, Attwell D. 2017. Endogenous GABA controls oligodendrocyte lineage cell number, myelination, and CNS internode length. *Glia* 65:309–321.

Hildebrand C, Hahn R. 1978. Relation between myelin sheath thickness and axon size in spinal cord white matter of some vertebrate species. *J Neurol Sci* 38:421–434.

Hildebrand C, Remahl S, Persson H, Bjartmar C. 1993. Myelinated nerve fibres in the CNS. *Prog Neurobiol* 40:319–384.

- Hines JH, Ravanelli AM, Schwandt R, Scott EK, Appel B. 2015. Neuronal activity biases axon selection for myelination in vivo. *Nat Neurosci* 18:683–689.
- Howe CL. 2006. Coated glass and vicryl microfibers as artificial axons. *Cells Tissues Organs* 183:180–194.
- Hughes EG, Kang SH, Fukaya M, Bergles DE. 2013. Oligodendrocyte progenitors balance growth with self-repulsion to achieve homeostasis in the adult brain. *Nat Neurosci* 16:668–676.
- Huxley AF, Stämpfli R. 1949. Evidence for saltatory conduction in peripheral myelinated nerve fibres. *J Physiol (Lond)* 108:315–339.
- Ibrahim M, Butt AM, Berry M. 1995. Relationship between myelin sheath diameter and internodal length in axons of the anterior medullary velum of the adult rat. *J Neurol Sci* 133:119–127.
- Ishibashi T, Dakin KA, Stevens B, Lee PR, Kozlov SV, Stewart CL, Fields RD. 2006. Astrocytes promote myelination in response to electrical impulses. *Neuron* 49:823–832.
- Jeffries MA, Urbanek K, Torres L, Wendell SG, Rubio ME, Fyffe-Maricich SL. 2016. ERK1/2 activation in preexisting oligodendrocytes of adult mice drives new myelin synthesis and enhanced CNS function. *J Neurosci* 36:9186–9200.
- Kaplan MR, Cho MH, Ullian EM, Isom LL, Levinson SR, Barres BA. 2001. Differential control of clustering of the sodium channels Na(v)1.2 and Na(v)1.6 at developing CNS nodes of Ranvier. *Neuron* 30:105–119.
- Kaplan MR, Meyer-Franke A, Lambert S, Bennett V, Duncan ID, Levinson SR, Barres BA. 1997. Induction of sodium channel clustering by oligodendrocytes. *Nature* 386:724–728.
- Káradóttir R, Cavelier P, Bergersen LH, Attwell D. 2005. NMDA receptors are expressed in oligodendrocytes and activated in ischaemia. *Nat Cell Biol* 438:1162–1166.
- Kessarlis N, Fogarty M, Iannarelli P, Grist M, Wegner M, Richardson WD. 2006. Competing waves of oligodendrocytes in the forebrain and postnatal elimination of an embryonic lineage. *Nat Neurosci* 9:173–179.
- Koudelka S, Voas MG, Almeida RG, Baraban M, Soetaert J, Meyer MP, Talbot WS, Lyons DA. 2016. Individual neuronal subtypes exhibit diversity in CNS myelination mediated by synaptic vesicle release. *Current Biol* 1–16.
- Lee S, Chong SYC, Tuck SJ, Corey JM, Chan JR. 2013. A rapid and reproducible assay for modeling myelination by oligodendrocytes using engineered nanofibers. *Nat Protoc* 8:771–782.
- Lee S, Leach MK, Redmond SA, Chong SYC, Mellon SH, Tuck SJ, Feng Z-Q, Corey JM, Chan JR. 2012a. A culture system to study oligodendrocyte myelination processes using engineered nanofibers. *Nat Meth* 9:917–922.
- Lee Y, Morrison BM, Li Y, Lengacher S, Farah MH, Hoffman PN, Liu Y, Tsingalia A, Jin L, Zhang P-W, Pellerin L, Magistretti PJ, et al. 2012b. Oligodendroglia metabolically support

axons and contribute to neurodegeneration. *Nature* 487:443–448.

Liu J, Dietz K, DeLoyht JM, Pedre X, Kelkar D, Kaur J, Vialou V, Lobo MK, Dietz DM, Nestler EJ, Dupree J, Casaccia P. 2012. Impaired adult myelination in the prefrontal cortex of socially isolated mice. *Nat Neurosci* 15:1621–1623.

Liu J, Dupree JL, Gacias M, Frawley R, Sikder T, Naik P, Casaccia P. 2016. Clemastine enhances myelination in the prefrontal cortex and rescues behavioral changes in socially isolated mice. *J Neurosci* 36:957–962.

Lundgaard I, Luzhynskaya A, Stockley JH, Wang Z, Evans KA, Swire M, Volbracht K, Gautier HOB, Franklin RJM, Charles ffrench-Constant, Attwell D, Káradóttir RT. 2013. Neuregulin and BDNF induce a switch to NMDA receptor-dependent myelination by oligodendrocytes. *PLoS Biol* 11:e1001743.

Makinodan M, Rosen KM, Ito S, Corfas G. 2012. A critical period for social experience-dependent oligodendrocyte maturation and myelination. *Science* 337:1357–1360.

Marques S, Zeisel A, Codeluppi S, van Bruggen D, Mendanha Falcão A, Xiao L, Li H, Häring M, Hochgerner H, Romanov RA, Gyllborg D, Muñoz-Manchado AB, et al. 2016. Oligodendrocyte heterogeneity in the mouse juvenile and adult central nervous system. *Science* 352:1326–1329.

McDonald WI, Ohlrich GD. 1971. Quantitative anatomical measurements on single isolated fibres from the cat spinal cord. *J Anat* 110:191–202.

McKenzie IA, Ohayon D, Li H, de Faria JP, Emery B, Tohyama K, Richardson WD. 2014. Motor skill learning requires active central myelination. *Science* 346:318–322.

Mei F, Fancy SPJ, Shen Y-AA, Niu J, Zhao C, Presley B, Miao E, Lee S, Mayoral SR, Redmond SA, Etxeberria A, Xiao L, et al. 2014. Micropillar arrays as a high-throughput screening platform for therapeutics in multiple sclerosis. *Nat Med* 20:954–960.

Mensch S, Baraban M, Almeida R, Czopka T, Ausborn J, Manira El A, Lyons DA. 2015. Synaptic vesicle release regulates myelin sheath number of individual oligodendrocytes in vivo. *Nat Neurosci* 18:628–630.

Michailov GV, Sereda MW, Brinkmann BG, Fischer TM, Haug B, Birchmeier C, Role L, Lai C, Schwab MH, Nave K-A. 2004. Axonal neuregulin-1 regulates myelin sheath thickness. *Science* 304:700–703.

Micheva KD, Wolman D, Mensch BD, Pax E, Buchanan J, Smith SJ, Bock DD. 2016. A large fraction of neocortical myelin ensheathes axons of local inhibitory neurons. *Elife* 5:3347.

Micu I, Jiang Q, Coderre E, Ridsdale A, Zhang L, Woulfe J, Yin X, Trapp BD, McRory JE, Rehak R, Zamponi GW, Wang W, et al. 2006. NMDA receptors mediate calcium accumulation in myelin during chemical ischaemia. *Nature* 439:988–992.

Micu I, Plemel JR, Lachance C, Proft J, Jansen AJ, Cummins K, van Minnen J, Stys PK. 2016. The molecular physiology of the axo-myelinic synapse. *Exp Neurol* 276:41–50.

Mirsky R, Winter J, Abney ER, Pruss RM, Gavrilovic J, Raff MC. 1980. Myelin-specific

proteins and glycolipids in rat Schwann cells and oligodendrocytes in culture. *J Cell Biol* 84:483–494.

Murray JA, Blakemore WF. 1980. The relationship between internodal length and fibre diameter in the spinal cord of the cat. *J Neurol Sci* 45:29–41.

Murtie JC, Macklin WB, Corfas G. 2007. Morphometric analysis of oligodendrocytes in the adult mouse frontal cortex. *J Neurosci Res* 85:2080–2086.

Redmond SA, Mei F, Eshed-Eisenbach Y, Osso LA, Leshkowitz D, Shen Y-AA, Kay JN, Aurrand-Lions M, Lyons DA, Peles E, Chan JR. 2016. Somatodendritic expression of JAM2 inhibits oligodendrocyte myelination. *Neuron* 91:1–14.

Richardson WD, Kessaris N, Pringle N. 2006. Oligodendrocyte wars. *Nat Rev Neurosci* 7:11–18.

Rivers LE, Young KM, Rizzi M, Jamen F, Psachoulia K, Wade A, Kessaris N, Richardson WD. 2008. PDGFRA/NG2 glia generate myelinating oligodendrocytes and piriform projection neurons in adult mice. *Nat Neurosci* 11:1392–1401.

Rosenberg SS, Kelland EE, Tokar E, la Torre De AR, Chan JR. 2008. The geometric and spatial constraints of the microenvironment induce oligodendrocyte differentiation. *Proc Natl Acad Sci USA* 105:14662–14667.

Rowitch DH, Kriegstein AR. 2010. Developmental genetics of vertebrate glial-cell specification. *Nature* 468:214–222.

Rushron WAH. 1951. A theory of the effects of fibre size in medullated nerve. *J Physiol (Lond)* 115:101–122.

Saab AS, Tzvetavona ID, Trevisiol A, Baltan S, Dibaj P, Kusch K, Möbius W, Goetze B, Jahn HM, Huang W, Steffens H, Schomburg ED, et al. 2016. Oligodendroglial NMDA receptors regulate glucose import and axonal energy metabolism. *Neuron* 91:1–29.

Sampaio-Baptista C, Khrapitchev AA, Foxley S, Schlagheck T, Scholz J, Jbabdi S, DeLuca GC, Miller KL, Taylor A, Thomas N, Kleim J, Sibson NR, et al. 2013. Motor skill learning induces changes in white matter microstructure and myelination. *J Neurosci* 33:19499–19503.

Scholz J, Klein MC, Behrens TEJ, Johansen-Berg H. 2009. Training induces changes in white-matter architecture. *Nat Neurosci* 12:1370–1371.

Snaidero N, Möbius W, Czopka T, Hekking LHP, Mathisen C, Verkleij D, Goebbels S, Edgar J, Merkler D, Lyons DA, Nave K-A, Simons M. 2014. Myelin membrane wrapping of CNS axons by PI(3,4,5)P3-dependent polarized growth at the inner tongue. *Cell* 156:277–290.

Stevens B, Porta S, Haak LL, Gallo V, Fields RD. 2002. Adenosine: a neuron-glial transmitter promoting myelination in the CNS in response to action potentials. *Neuron* 36:855–868.

Szuchet S, Yim SH, Monsma S. 1983. Lipid metabolism of isolated oligodendrocytes

maintained in long-term culture mimics events associated with myelinogenesis. *Proc Natl Acad Sci USA* 80:7019–7023.

Taveggia C, Zanazzi G, Petrylak A, Yano H, Rosenbluth J, Einheber S, Xu X, Esper RM, Loeb JA, Shrager P, Chao MV, Falls DL, et al. 2005. Neuregulin-1 type III determines the ensheathment fate of axons. *Neuron* 47:681–694.

Tomassy GS, Berger DR, Chen H-H, Kasthuri N, Hayworth KJ, Vercelli A, Seung HS, Lichtman JW, Arlotta P. 2014. Distinct profiles of myelin distribution along single axons of pyramidal neurons in the neocortex. *Science* 344:319–324.

Tripathi RB, Clarke LE, Burzomato V, Kessar N, Anderson PN, Attwell D, Richardson WD. 2011. Dorsally and ventrally derived oligodendrocytes have similar electrical properties but myelinate preferred tracts. *J Neurosci* 31:6809–6819.

Venkatesh HS, Johung TB, Caretti V, Noll A, Tang Y, Nagaraja S, Gibson EM, Mount CW, Polepalli J, Mitra SS, Woo PJ, Malenka RC, et al. 2015. Neuronal activity promotes glioma growth through neuropilin-3 secretion. *Cell* 161:803–816.

Viganò F, Möbius W, Götz M, Dimou L. 2013. Transplantation reveals regional differences in oligodendrocyte differentiation in the adult brain. *Nat Neurosci* 16:1370–1372.

Wake H, Lee PR, Fields RD. 2011. Control of local protein synthesis and initial events in myelination by action potentials. *Science* 333:1647–1651.

Wake H, Ortiz FC, Woo DH, Lee PR, Angulo MC, Fields RD. 2015. Nonsynaptic junctions on myelinating glia promote preferential myelination of electrically active axons. *Nat Comm* 6:7844.

Watkins TA, Ben Emery, Mulinyawe S, Ben A Barres. 2008. Distinct stages of myelination regulated by γ -secretase and astrocytes in a rapidly myelinating CNS coculture system. *Neuron* 60:555–569.

Wong AW, Xiao J, Kemper D, Kilpatrick TJ, Murray SS. 2013. Oligodendroglial expression of TrkB independently regulates myelination and progenitor cell proliferation. *J Neurosci* 33:4947–4957.

Xiao L, Ohayon D, McKenzie IA, Sinclair-Wilson A, Wright JL, Fudge AD, Ben Emery, Li H, Richardson WD. 2016. Rapid production of new oligodendrocytes is required in the earliest stages of motor-skill learning. *Nat Neurosci* 1–9.

Yeung MSY, Zdunek S, Bergmann O, Bernard S, Salehpour M, Alkass K, Perl S, Tisdale J, Possnert G, Lou Brundin, Druid H, Frisén J. 2014. Dynamics of oligodendrocyte generation and myelination in the human brain. *Cell* 159:766–774.

Young KM, Psachoulia K, Tripathi RB, Dunn S-J, Cossell L, Attwell D, Tohyama K, Richardson WD. 2013. Oligodendrocyte dynamics in the healthy adult CNS: evidence for myelin remodeling. *Neuron* 77:873–885.

Ziak D, Chvátal A, Syková E. 1998. Glutamate-, kainate- and NMDA-evoked membrane currents in identified glial cells in rat spinal cord slice. *Physiol Res* 47:365–375.

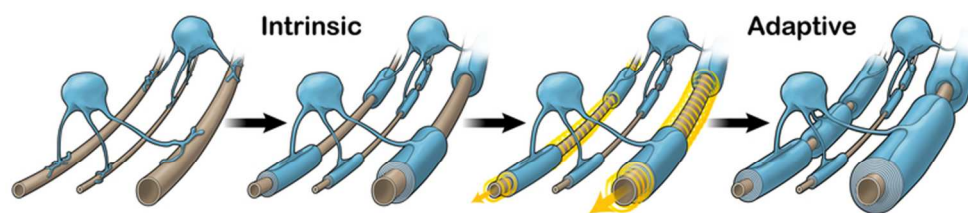


Figure 1. Model of Intrinsic and Adaptive Myelination.

This proposed model describes two phases of myelination that encompass our current understanding of CNS myelination: intrinsic and adaptive. First, the intrinsic, encoded program within oligodendrocyte precursor cells guides oligodendrocyte differentiation and myelination of axons. During this intrinsic phase, oligodendrocyte processes sense physical axon diameters to select axons and generate myelin sheath lengths corresponding to the caliber, with longer sheaths on larger calibers. The second phase is adaptation of intrinsic myelin sheaths. While the timing is yet unclear, the size and number of myelin sheaths may be modified by signals from active neurons either during or after intrinsic myelination is completed. Extrinsic, adaptive signals allow for further increases to sheath size and number (as shown in the left and right axon) while no such changes occur on silent axons (middle axon). These changes may, in turn, adapt neuronal conduction and reinforce selected circuits, particularly in areas with sparsely myelinated axons. The content and concept for these images were generated by the authors and were designed and illustrated by ScideLight (www.scidelight.com).

70x19mm (300 x 300 DPI)

Accepted