



THE UNIVERSITY *of* EDINBURGH

Edinburgh Research Explorer

Sorption of pesticide endosulfan by electrodialysis membranes

Citation for published version:

Banasiak, LJ, Van der Bruggen, B & Schaefer, AI 2011, 'Sorption of pesticide endosulfan by electrodialysis membranes', *Chemical Engineering Journal*, vol. 166, no. 1, pp. 233-239.
<https://doi.org/10.1016/j.cej.2010.10.066>

Digital Object Identifier (DOI):

[10.1016/j.cej.2010.10.066](https://doi.org/10.1016/j.cej.2010.10.066)

Link:

[Link to publication record in Edinburgh Research Explorer](#)

Document Version:

Peer reviewed version

Published In:

Chemical Engineering Journal

General rights

Copyright for the publications made accessible via the Edinburgh Research Explorer is retained by the author(s) and / or other copyright owners and it is a condition of accessing these publications that users recognise and abide by the legal requirements associated with these rights.

Take down policy

The University of Edinburgh has made every reasonable effort to ensure that Edinburgh Research Explorer content complies with UK legislation. If you believe that the public display of this file breaches copyright please contact openaccess@ed.ac.uk providing details, and we will remove access to the work immediately and investigate your claim.



Sorption of Pesticide Endosulfan by Electrodialysis Membranes

Laura J. Banasiak^{1*}, Bart Van der Bruggen² and Andrea I. Schäfer^{1#}

¹ School of Engineering, The University of Edinburgh, Edinburgh EH9 3JL, United Kingdom;

² Laboratory for Applied Physical Chemistry and Environmental Technology, Department of Chemical Engineering, K.U. Leuven, W. de Croylaan 46, 3001 Leuven, Belgium

Corresponding author. Phone: +44 (0) 131 650 7209; Fax: +44 (0) 131 650 6781; Email: Andrea.Schaefer@ed.ac.uk

Abstract

Endosulfan (ES) is a micropollutant found in reverse osmosis concentrates from water reuse applications. Electrodialysis (ED) can remove and recover charged solutes from such concentrates. While polar compounds cannot normally be removed, their fate in ED is important as they can contribute to membrane fouling/poisoning and be released during cleaning. High adsorption of ES to ED membranes was observed. Consequently, the influence of solution pH and presence of humic acid (HA) on sorption mechanisms of ES to ion-exchange membranes during batch sorption isotherm and ED experiments were investigated systematically. ES-membrane partition coefficients ($\log K_{AEM/CEM}$) quantified through sorption isotherm experiments suggested that ES sorption was resultant of membrane catalysed ES degradation, hydrogen bonding and cation- π interactions between ES and membrane functional groups. ES sorption at pH 7 ($550 \mu\text{g}/\text{cm}^3$) was greater than sorption at pH 11 ($306 \mu\text{g}/\text{cm}^3$) due to alkaline hydrolysed ES and resultant decrease in bonding capacity with the membranes at high pH. The presence of HA reduced sorption at pH 7 ($471 \mu\text{g}/\text{cm}^3$) and 11 ($307 \mu\text{g}/\text{cm}^3$) due to HA competitive sorption. Partial membrane desorption was noted in isotherm ($\leq 20\%$) desorption experiments and was dependent on the initial mass sorbed, solvent pH and resultant membrane interactions.

Keywords: Electrodialysis; Endosulfan; Adsorption; Ion exchange membranes; Organic matter; Pesticide.

1. Introduction

ES is an organochlorine insecticide that has been used extensively in agriculture for the control of insect pests of crops such as cotton, vegetables, fruit and tobacco [1]. ES movement via runoff and spray drift leads to contamination of aquatic environments [2]. Studies have shown that ES is toxic to fish and aquatic invertebrates [3], while potential human health impacts include cardiovascular, endocrine, gastrointestinal and respiratory toxicity [4]. The European Commission Directive on the Quality of Water Intended for Human Consumption sets a maximum admissible concentration of

* Current address: Faculty of Engineering, University of Wollongong, Wollongong NSW 2522, Australia

0.1 $\mu\text{g}/\text{L}$ per individual pesticide and 0.5 $\mu\text{g}/\text{L}$ for the sum of pesticides in drinking water [5]. While ES concentrations in aquatic environments are generally low ($< 1 \mu\text{g}/\text{L}$) [2], in areas of application ES has been found in brackish groundwater at 4.2 $\mu\text{g}/\text{L}$ [6] and up to 1700 $\mu\text{g}/\text{L}$ in surface water [7]. Reverse osmosis (RO) concentrates from water reuse contain concentrated amounts of ES because ES is retained by RO.

ES is a mixture of two stereoisomers, α -endosulfan (α -ES) and β -endosulfan (β -ES) in the range of 64-70% and 29-32%, respectively [8] and may contain 2% endosulfan diol (ES diol) and 1% endosulfan ether (ES ether) [4]. The primary degradation product of concern is endosulfan sulfate (ES sulfate), which is formed in the environment via microbial degradation of α - and β -ES [9]. ES can be hydrolysed to form less toxic ES diol [10].

The treatment of pesticides by membrane processes such as nanofiltration (NF) and RO has been widely reported [11-14]. Two mechanisms for pesticide adsorption to membranes have been suggested: hydrophobic interaction between pesticide and membrane surface [13] and hydrogen bonding between pesticide functional groups and membrane active layer [12]. ED is a viable technology for the desalination of brackish water [15], seawater [16] and solutions containing organics [17]. ED is more cost effective than RO in the salinity range of 1.5-5 g/L [18] and has the potential to treat the waste stream generated by pressure driven membrane processes, which are commonly used in desalination and water reuse applications. Such waste streams, or brines, contain salts, nutrients, organic matter (OM) and numerous micropollutants including pesticides, heavy metals, endocrine disrupting chemicals [19].

Mechanisms governing ES behaviour in ED and interaction with ion-exchange membranes have to date not been identified. Previous studies have suggested electrostatic and hydrophobic interactions between organic molecules and ion-exchange membranes [20]. Quantification of these mechanisms has to date not been possible. An understanding of ES partitioning between water and anion- (AEM) and cation- (CEM) exchange membranes is important for prediction of its fate in ED.

Strong interactions between OM and pesticides have been reported with pesticide sorption to OM influencing transport and fate of these compounds in other processes [21-22]. Agbekodo *et al.* [21] studied atrazine and simazine removal by NF in the presence and absence of OM. Removal increased from 50% to 90-100% with OM. The principle mechanisms for removal in the presence of OM were pesticide-OM complexation, membrane electrostatic repulsion and adsorption. In ED, OM deposits on membranes leading to fouling [23]. However, Park *et al.* [24] found that a small fraction of OM may permeate AEMs. The influence of OM on ES membrane sorption during ED is unknown.

The objectives of this study were to investigate 1) the interaction mechanisms between ES and ion-exchange membranes, 2) the influence of solution pH and OM on this interaction and 3) the fate of ES during ED. Membrane-water partition coefficients ($\log K_{AEM/CEM}$) for ES were determined in sorption isotherm experiments to elucidate the mechanisms governing membrane sorption. The influence of solution pH on ES membrane sorption during batch and continuous ED experiments was evaluated to identify differences in sorption between undissociated (pH 7) and degraded (pH 11) ES. Sorption isotherm and ED experiments were conducted with and without the presence of an OM. Results from this study were compared to membrane sorption of the steroidal hormone estrone during ED, due to similar sorption behaviour, whereby electrostatic interactions along with sorption and diffusion mechanisms were found to play an important role.

2. Materials and Methods

2.1 Chemicals

All chemicals used were analytical grade. NaOH and HCl used for pH adjustments (1 mol/L) and membrane desorption experiments (0.002 mol/L) and Na_2SO_4 (0.5 mol/L) used in the electrode rinse solution, were purchased from Fisher Scientific (UK). All experiments were conducted in a background solution of 5 g/L NaCl and 84 mg/L NaHCO_3 (Fisher Scientific, UK). Radiolabeled [^{14}C] ES ($> 95\%$ purity; 18.5 MBq solid form) was purchased from the Institute of Isotopes Co., Ltd. (Hungary). Radiolabeled [^3H] estrone ($> 98.5\%$ purity; 37 MBq/mL) (3.55 TBq/mmol)

was purchased from GE Healthcare (UK). Non-labelled ES compounds ($\geq 99\%$ purity) and estrone ($\geq 98\%$ purity) were purchased from Sigma Aldrich (UK). Stock solutions of radiolabeled (100 $\mu\text{g/L}$) and non-labelled (990 mg/L and 1000 mg/L) ES compounds and estrone were prepared in methanol (CH_3OH) (Fisher Scientific, UK). Dichloromethane (CH_2Cl_2), used in the liquid-liquid extraction of unlabeled ES compounds was obtained from Acros Organics (Belgium) while trifluralin (75 mg/L) was used as an internal standard (Riedel-de Häen, Germany). Physicochemical properties of the ES isomers, degradation products and the hormone estrone are outlined in Table 1.

The OM selected for use was humic acid sodium salt (HA) (Sigma Aldrich, UK). Although OM concentration in natural waters is variable (0.5–100 mg C/L) [25], a concentration of 12.5 mg C/L was used for experiments containing HA. The major functional groups of the negatively charged (neutral-basic pH) HA include carboxylic, phenolic and alcohol/aldehyde acids, and methoxyl [26].

[Table 1]

2.2 Sorption isotherm and desorption experiments

Radiolabeled (100 ng/L) and non-labelled ES (70:30 α -ES: β -ES mix) was added to 100 mL background solution (adjusted to pH 7) to make up concentrations of 1, 2, 10, 100 and 2500 $\mu\text{g/L}$. A 2 cm^2 segment of AEM or CEM (3 replicates/membrane) was added to each solution bottle and shaken in an incubator shaker (Certomat BS-1, Sartorius) at 200 RPM and 25°C for 100 hours. A sample (1 mL) was taken from each bottle prior to membrane addition and periodically during each experiment for ES analysis (total 11 samples per bottle). Solutions without membrane addition were included to determine possible ES sorption to the glass bottles. For experiments undertaken in the presence of HA the bottles were shaken for 24 hours prior to membrane addition to allow for ES-HA equilibrium. Samples (3.5 mL) from each bottle were taken prior to membrane addition and periodically during each ES-HA experiment for HA analysis. ES desorption from membranes used in the 1 $\mu\text{g/L}$ isotherm experiment was measured in 100 mL solutions of 0.002 mol/L NaOH/HCl/ultrapure water shaken for 170 hours.

2.3 Electro dialysis system, membranes and protocol

A BEL-500 stack (Berghof, Germany) with six Neosepta AMX-SB AEMs and seven CMX-SB CEMs (supplied by Eurodia, Germany; manufactured by ASTOM Corporation, Japan) with an available membrane area of 58 cm^2 each was used in the ED experiments. The positively charged AEMs (basic) and negatively charged CEMs (acidic) used in the sorption isotherm and ED experiments contain alkylammonium and sulfonic acid ion-exchange groups, respectively, attached to the aromatic rings of a polystyrene-divinylbenzene (PS-DVB) matrix on a microporous polyvinyl chloride (PVC) gel supported by plasticized PVC cloth [27]. The thicknesses of the membranes were 0.14 and 0.17 mm for the AEM and CEM, respectively. The volumes of the membranes used during ED experiments were 4.9 cm^3 and 6.9 cm^3 for the 58 cm^2 AEM and CEM, respectively [28]. The stack was connected to a DC electric potential (GW Instek DC Power supply Model GPR-1810HD, Taiwan) through TiO_2 -coated titanium electrodes. Flow rates in all compartments (diluate, concentrate and electrode rinse) were 1.5 L/min (Masterflex IP Variable speed pump system, US). Continuous (diluate and concentrate recirculated to one feed container) and batch (separate diluate and concentrate containers) experiments were undertaken.

An applied voltage of 10 V was fixed for all ED experiments. Preliminary batch ED experiments (4L each, separate diluate and concentrate) with 100 $\mu\text{g/L}$ (non-labelled) α -ES and ES sulfate were undertaken to establish the behaviour of these compounds during ED at pH 3 and 7. Feed solutions (2500 $\mu\text{g/L}$ ES, 4L total) for subsequent continuous ED experiments were prepared in background solution. The ES concentration used in the ED experiments was much greater than the concentration usually found in natural waters due to the high sorption capacity of the membranes. To determine the influence of solution pH on ES sorption during continuous ED experiments, the feed pH was maintained constant by the addition of 1 mol/L HCl and/or NaOH. A new set of membranes was used in each continuous ED experiment to avoid interference from ES sorbed in previous

experiments. Sorption within the diluate and concentrate was evaluated in batch experiments undertaken after the completed continuous experiments (continuous solution separated into diluate and concentrate). A mixed ES and estrone (2500 $\mu\text{g/L}$ each) continuous experiment was undertaken to evaluate competitive sorption between compounds exhibiting similar behaviour. Samples were collected at the beginning of each ED experiment and periodically for ES and/or estrone (1 mL) and UV-Vis absorbance (3 mL) analysis.

2.4 Analytical methods

Radiolabeled ES and estrone were analysed using a Beckman Coulter scintillation counter (LS 6500). Samples (1 mL) were mixed with 7 mL Ultima Gold® scintillation cocktail (Perkin Elmer, UK) and measured in triplicate. ES and estrone concentration was ascertained from a linear regression performed on calibration standards (ES: 0.1, 1, 2 and 5 $\mu\text{g/L}$; Estrone: 0.01, 0.1, 1, 10, 100 and 1000 ng/L). Gas Chromatography-Electron Capture Detection (GC-ECD) (Autosystem XL chromatograph with an electron-capture detector, Perkin Elmer, UK) was used for the determination of unlabeled α -ES, ES sulfate and ES diol within samples (100 mL) taken during preliminary ED experiments. Liquid-liquid extraction was undertaken with dichloromethane (50 mL) and the internal standard trifluralin (5 μL).

The pH, electrical conductivity and temperature of samples periodically taken from the feed, diluate and concentrate during ED experiments were measured using a pH/Conductivity meter (Multiline P4 pH electrode, WTW, Germany). UV-Visible Spectrometry (Varian Cary 100 Scan, UK) was used to determine the absorbance of HA (wavelength of 254 nm) in experimental samples.

3. Results and discussion

3.1 Preliminary electro dialysis experiments

In the early stages of this research, significant difficulties were encountered with the ES mass balance. Preliminary ED experiments showed a decrease in α -ES and ES sulfate within the diluate and concentrate (Figure 1). The concentration of α -ES within the diluate and concentrate (91.4% and 88.6% initial mass lost, respectively) decreased more than that of ES sulfate (80.6% (diluate) and 79.1% (concentrate)) at pH 3. The same trend was observed at pH 7. This observation led to thorough investigations of (a) losses to equipment, (b) volatilisation, and (c) degradation in an attempt to recover the ES.

[Figure 1]

Losses to equipment (a) are material dependent. Polystyrene sample containers were reported to sorb ES strongly, compared with glass [29] and stainless steel. In consequence, all process stream lines were converted from plastic to stainless steel where possible (small sections of silicon tubing were required for the peristaltic pump). ED experiments with α -ES and ES sulfate were repeated with results showing a similar trend shown in Figure 1 indicating that losses to equipment were not significant.

Volatilisation (b) of ES from aqueous media in laboratory experiments has been attributed to its low water solubility and high volatility [29]. Control sorption experiments were undertaken to measure ES sorption to and/or volatilisation from 100 mL glass sample bottles. A loss of up to 20% was noted with the bulk lost in the beginning of the experiment. $\log K_{AEM/CEM}$ values determined in the sorption isotherm experiments were adjusted accordingly to account for this loss due to volatilisation. Diluate and concentrate containers were subsequently closed to prevent volatilisation during the experiments.

Heterogeneous electrochemical degradation (c) of organic compounds may occur on membranes and electrodes [30]. To establish if this is the case, diluate and concentrate were analysed for the presence of the degradation product ES diol (Figure 1A and C). ES diol was not detected in the initial diluate and concentrate samples at pH 3. However, a slight increase to 10.1 and 9.5 μg

occurred during the experiment, respectively. While this indicates that such degradation occurs, it cannot account for the observed losses.

In consequence, the only other possible mechanism for ES losses is sorption to the membrane polymers. Sorption isotherm experiments were undertaken to quantify such ES sorption to the ion-exchange membranes.

3.2 Endosulfan sorption is batch sorption isotherm tests

ES concentration decreased significantly in the isotherm experiments indicating important membrane sorption. Two sorption processes are suggested; (1) Initial rapid surface sorption and (2) sorption in the internal surface of the membrane, which is slow and diffusion limited (Figure A1). Diffusion of ES within the membrane pores, of which ED membranes have an approximate radius of 3 nm [31], is possible along with sorption to the PVC support. The amount of ES sorbed ($\log C_{AEM/CEM}$) increased as solution phase concentration ($\log C_w^i$) increased ($r^2 > 0.99$) (Figure 2). The isotherm linearity at low concentration (0.1–100 $\mu\text{g/L}$) suggests that partitioning into the membranes was the dominant mechanism and that adsorption sites within the membranes were far from being saturated [32]. The deviation of the isotherms from linearity at 2500 $\mu\text{g/L}$ indicates sites beginning to be saturated. As constant mass sorbed was not reached, 100 hours was arbitrarily chosen for the determination of the ES-membrane partition coefficients. There was no significant difference in AEM sorption with and without HA, and the slight decrease in CEM sorption in the presence of HA is within experimental error. In the absence of HA the determined membrane partition coefficients ($\log K_{AEM/CEM}$) were $0.46 \pm 0.10 \text{ L/m}^3$ and $0.14 \pm 0.05 \text{ L/cm}^3$ for the AEM and CEM, respectively. In the presence of HA, $\log K_{AEM/CEM}$ values were $0.42 \pm 0.07 \text{ L/cm}^3$ and $0.01 \pm 0.002 \text{ L/cm}^3$, respectively.

[Figure 2]

3.3 Endosulfan sorption mechanisms

Pronk *et al.* [33] studied the sorption of the hormone 17 α -ethinylestradiol (75% initial mass sorbed) to ion-exchange membranes during batch ED experiments for the treatment of urine and postulated that sorption was due to hydrophobicity. However, a study by Banasiak [34] suggested that trace organic sorption (of steroidal hormones) to ion-exchange membranes was influenced by mechanisms other than hydrophobic interactions. The possible interactions between ES and the AEM and CEM functional groups are illustrated in Figure 3. Previous studies have demonstrated that trace organics primarily interact with membranes through hydrogen bonding [35–36]. The AEM functional group is capable of forming hydrogen bonds with molecules containing hydrogen-donor and acceptor groups [37] and presents more opportunities for bonding; thus accounting for greater ES sorption affinity compared to the CEM. AEM sorption of ES would be facilitated through bonding between the S-1 (S=O, C-7) and C-10 (C-O) hydrogen-acceptor groups and the AEM CH₃ hydrogen-donor group, while bonding between ES diol and the AEM would be between the C-7 and C-10 OH groups. However, the AEM quaternary ammonium group is dissociated and the cation may be strongly hydrated. Therefore, a novel interaction mechanism not previously considered is proposed which is cation- π interactions [38]. The fixed positive charges of the AEM have high potential to attract the negative electron imbalance of the ring structure. The interaction of the non-metallic cation RNH₃⁺ with double bonds can be thought of as a form of X-H $\cdots\pi$ hydrogen bonds. It is difficult to define the contribution to bonding from a specific interaction due to the fact that many different forces (e.g. donor-acceptor, cation- π , hydrophobic interactions, dispersion and van der Waals forces) contribute to molecular binding. However, the occurrence of cation- π interactions could further explain the higher sorption of ES to the AEM membranes. Bonding between ES and the CEM would be facilitated between the ES S-1 S=O group and the CEM OH group. In aqueous solutions, ES diol is the most common degradation product and can be reduced on a charged surface. It is postulated that ES is hydrolysed to ES diol on contact with the strongly basic AEM. Detection of ES diol (but not individual identification) in the form of ES was possible because of

the utilisation and position of the ¹⁴C label on ES. Bonding between ES diol and the CEM functional group would be facilitated through the ES diol OH bipolar groups.

[Figure 3]

Nerin *et al.* [39] studied ES sorption on low-density polyethylene (LDPE) films used as agricultural soil covers. A comparison between ES sorbed per unit area (ng/cm^2) showed greater sorption to the polystyrene based membranes (7 days: AEM 17.0 $\mu\text{g/cm}^2$; CEM 10.1 $\mu\text{g/cm}^2$) compared to LDPE (7 days: α -ES 0.3 ng/cm^2 , β -ES 1.3 ng/cm^2). Considering one polymer repeating unit, the AEM (9 hydrogen-donors) presents more opportunities for bonding than LDPE (4 hydrogen-donors); thus demonstrating the influence of polymer type on sorption.

3.4 Endosulfan sorption in Electrodialysis

ED experiments were undertaken to elucidate the mechanisms of ES membrane sorption during ED. Sorption kinetics during continuous ED experiments exhibited immediate rapid sorption within 15 minutes followed by a steady increase to 550 $\mu\text{g/cm}^3$ at 4 hours (57.0% initial mass) (Figure 4). Constant ES mass sorbed was not reached at pH 7 and 11 (306 $\mu\text{g/cm}^3$, 33.6%) with the kinetics indicating membrane diffusion. After the feed solution was separated, sorption continued within the diluate and concentrate at pH 7; indicating sorption to both the AEMs and CEMs. This confirms the results by Pronk *et al.* [33] whereby neutral compounds were assumed to sorb to both AEMs and CEMs. Above pH 10, ES degradation results from cleavage of the cyclic sulfite group [10] leading to the formation of ES diol. This process is accelerated by NaOH addition. The reduced sorption of ES diol at pH 11 can be predominantly attributed to the reduced bonding capability between ES diol and the membranes compared to ES.

[Figure 4]

At pH 7, when HA is > 99% dissociated, hydrogen bonding between the ES S=O and C-O groups and HA OH groups would occur. In the presence of HA ES sorption at pH 7 decreased by 79 $\mu\text{g/cm}^3$ (471 $\mu\text{g/cm}^3$, Figure 4) due to electrostatic repulsion between negatively charged ES-HA complexes and the CEMs. ES sorption at pH 11 was similar in the presence of HA (307 $\mu\text{g/cm}^3$). Henggraprom *et al.* [40] found that ES diol sorption to HA-mineral complexes was less than α -ES due to its high water solubility. The complexation of ES diol and HA would not be as strong at pH 11 as undissociated ES diol contains 2 hydrogen acceptors compared to 3 hydrogen acceptors of ES (Table 1). Therefore, the minimal difference in sorption at pH 11 in the absence and presence of HA is due to reduction in ES diol-HA complexation coupled with the low mass of HA sorbed at pH 11 (0.52 mgC, 1.0% initial mass HA).

3.5 Desorption of endosulfan

Changes in solution chemistry can influence organic sorption and potentially release the organic back into solution. This has potentially serious membrane performance, health and environmental implications. Chang *et al.* [41] raised the issue of estrone desorption during backwashing and membrane cleaning of microfiltration (MF) membranes. Analyses were carried out to determine whether ES could be desorbed from the membranes used in the sorption isotherm experiments. Partial desorption in the presence of HCl, NaOH (used in practical applications to clean membranes) and ultrapure water (UW) was noted with rapid desorption occurring within 24 hours (Figure A2). CEM desorption (HCl: 24.3% (% initial mass sorbed); NaOH: 27.9%; UW: 15.1%) was greater than AEM desorption (HCl: 12.4%; NaOH: 3.1%; UW: 8.3%) due to the greater mass of ES sorbed to the AEMs. More ES was desorbed from the CEM with NaOH (pH ~ 11) possibly due to ES degradation. Membrane desorption of ES is thus not only dependent on the initial mass sorbed but also on solvent pH. In practical applications, cleaning is usually performed with the ED membranes in situ, at relatively high flow velocity and under alkaline conditions. It is possible that

trace organics such as ES can desorb into the diluate during reversal or cleaning. The significant desorption observed in this study further implies that wastewater obtained from the cleaning process of ED membranes used to treat water containing pesticides could contain potentially high concentrations of such contaminants. While the US EPA recommends less than 74 µg/L ES in waterways, exposure to just 1.3 µg/L is toxic to fish [3]. Exposure for short periods can cause adverse nervous system, stomach, blood, liver and kidney effects and death. Further treatment of the diluate, concentrate and cleaning solutions need to be considered when trace organics are amongst the target contaminants. These results are important as the risks associated with the disposal of ED membrane cleaning solutions have been not yet been addressed.

3.6 Comparison with hormone sorption

To gain insight into the general applicability of observations to other trace organics, the sorption of ES during ED was compared to that of estrone (E1). Estrone is a natural estrogen that is dissociated and negatively charged above pH 10.4 [42]. Estrone was selected due to its presence in effluents from conventional wastewater treatment plants [43] and its high sorption affinity for the ion-exchange membranes [34]. A dual compound ED experiment with both ES and estrone was undertaken at pH 7 and 11. Preferential sorption of ES was observed (Figure 5). Sorption ES and estrone was reduced at pH 11 possibly because of competitive sorption between the degraded/dissociated ES and estrone and the ion-exchange membranes. It is interesting to note that ES sorption was greater in the dual compound experiment (pH 7: $596 \pm 17.9 \mu\text{g}/\text{cm}^3$; pH 11: $414 \pm 12.4 \mu\text{g}/\text{cm}^3$) than in the single compound experiment (pH 7: $550 \pm 16.5 \mu\text{g}/\text{cm}^3$; pH 11: $306 \pm 9.2 \mu\text{g}/\text{cm}^3$). A similar trend was noted for estrone at pH 11 (Single: $257 \pm 4.9 \mu\text{g}/\text{cm}^3$; Dual: $278 \pm 5.6 \mu\text{g}/\text{cm}^3$). However, the mass of estrone sorbed in the single compound experiment (pH 7: $380 \mu\text{g}/\text{cm}^3$) was similar to the mass sorbed in the dual compound experiment (pH 7: $381 \mu\text{g}/\text{cm}^3$). While further work is required to fully understand this competitive behaviour, results indicate that the sorption capacity of ED membrane is very high. In consequence saturation with ES and estrone was not reached at conditions that reflect the upper end of environmental concentrations.

[Figure 5]

4. Conclusions

The quantification of partition coefficients indicated strong sorption of ES to the ion-exchange membranes. While challenges remain to elucidate the contribution of specific interaction mechanisms to this sorption, it was postulated for those to occur predominantly due to hydrogen and cation- π interactions between ES and membrane functional groups. Alkaline hydrolysis of ES to ES diol influenced sorption whereby lower hydrogen bonding capacity between ES diol and the membranes reduced sorption at pH 11. The influence of solute-solute interactions between ES and HA on sorption during ED were minimal. The ED sorption behaviour of estrone (dissociated at pH 11) was similar to that of ES. Estimations based on ES sorption in the small-scale ED system used in this study, show that ES sorption in an industrial sized system would be significant. For example, in a commercially available ED stack with a membrane area of 370 m², approximately 17 kg of ES could potentially be sorbed. An accidental release to the environment or a water supply would have serious health implications, while this illustrates the potential of ED to concentrate and potentially remove a significant amount of such micropollutants via unconventional ED-sorption.

Acknowledgements

This work was funded initially by the Australian Research Council (ARC) project LP0454254 'Characterisation and Treatment of Reverse Osmosis Concentrates from Recycling Applications' in collaboration with Brisbane Water. Banasiak received a University of Edinburgh international PhD scholarship and K.U. Leuven provided support for her visit. Berghof GmbH (Germany) has donated of the ED stack. Ivan Kennedy (The University of Sydney, Australia), Howard Colquhoun (The University of Reading, UK), and Ian Metcalf (University of Newcastle, UK) are thanked for helpful

discussions on endosulfan chemistry, polymer characteristics and electrochemical degradation, respectively. Christine Wouters (K.U.Leuven, Belgium), Peter Anderson and Alan Simm (The University of Edinburgh, UK) are acknowledged for assistance with sample analysis. Thanks also to Menachem Elimelech (Yale University) for review of this manuscript as a Royal Academy of Engineering Distinguished Visiting Fellow.

Appendices

For further information on the calculation ES sorption to each membrane and the water-membrane partition coefficients along with sorption/desorption kinetics during batch isotherm and ED experiments and details of steroidal hormone sorption, refer to Appendix A.

References

- [1] G.F. Antonius, M.E. Byers, J.C. Snyder, Residues and Fate of Endosulfan on Field-Grown Pepper and Tomato, *Pestic. Sci.*, 54 (1998) 61-67.
- [2] German Federal Environment Agency, Endosulfan Preliminary Dossier, German Federal Environment Agency, Umweltbundesamt, Berlin, Germany, 2004.
- [3] E. Capkin, I. Altinok, S. Karahan, Water quality and fish size affect toxicity of endosulfan, an organochlorine pesticide, to rainbow trout, *Chemosphere*, 64 (2006) 1793-1800.
- [4] ATSDR, Toxicological Profile for Endosulfan, Agency for Toxic Substances and Disease Registry, Atlanta, USA, 2000.
- [5] EU, Council Directive 98/83/EC of 3 November 1998 on the quality of water intended for human consumption, in: *Official Journal L 330*, European Union, 1998.
- [6] C.M. Gonçalves, J.C.G. Esteves da Silva, M.F. Alpendurada, Evaluation of the pesticide contamination of groundwater sampled over two years from a vulnerable zone in Portugal, *J. Agric. Food. Chem.*, 55 (2007) 6227-6235.
- [7] W.R. Ernst, P. Jonah, K. Doe, G. Julien, P. Hennigar, Toxicity to aquatic organisms of off-target deposition of endosulfan applied by aircraft, *Environ. Toxicol. Chem.*, 10 (1991) 103-114.
- [8] C.P. Rice, S.M. Chernyak, C.J. Hapeman, S. Bilbouljian, Air-water distribution of the endosulfan isomers, *J. Environ. Qual.*, 26 (1997) 1101-1107.
- [9] P.F. Coleman, P.M. Dolinger, Endosulfan monograph no. 4: Environmental health evaluations of California restricted pesticides, State of California Department of Food and Agriculture, Sacramento, USA, 1982.
- [10] H. Goebel, S.G. Gorbach, W. Knauf, R.H. Rimpau, H. Huttenbach, Properties, effects, residues and analytics of the insecticide endosulfan, *Residue Rev.*, 83 (1982) 1-174.
- [11] B. Van der Bruggen, K. Everaert, W. Wilms, C. Vandecasteele, Application of nanofiltration for removal of pesticides, nitrate and hardness from ground water: rejection properties and economic evaluation, *J. Membr. Sci.*, 193 (2001) 239-248.
- [12] E.S.K. Chian, W.N. Bruce, H.H.P. Fang, Removal of pesticides by reverse osmosis, *Environ. Sci. Technol.*, 9 (1975) 52-59.
- [13] Y. Kiso, Y. Nishimura, T. Kitao, K. Nishimura, Rejection properties of non-phenylic pesticides with nanofiltration membranes, *J. Membr. Sci.*, 171 (2000) 229-237.
- [14] P. Berg, G. Hagemeyer, R. Gimbel, Removal of pesticides and other micropollutants by nanofiltration, *Desalination*, 113 (1997) 205-208.
- [15] J.M. Ortiz, J.A. Sotoca, E. Exposito, F. Gallud, V. Garcia-Garcia, V. Montiel, A. Aldaz, Brackish water desalination by electro dialysis: batch recirculation operation modeling, *J. Membr. Sci.*, 252 (2005) 65-75.
- [16] Y. Tanaka, Mass transport and energy consumption in ion-exchange membrane electro dialysis of seawater, *J. Membr. Sci.*, 215 (2003) 265-279.
- [17] C.H. Lee, M.K. Hong, S.D. Han, J. Shim, S.H. Moon, Analysis of fouling potential in the electro dialysis process in the presence of an anionic surfactant foulant, *J. Membr. Sci.*, 325 (2008) 719-726.

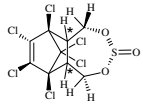
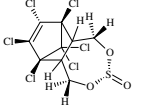
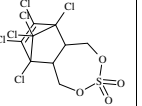
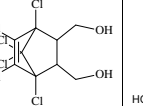
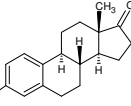
- [18] T. Melin, R. Rautenbach, Membrane processes (Membranverfahren), Springer Verlag, Heidelberg, Germany, 2004.
- [19] B. Van der Bruggen, L. Lejon, C. Vandecasteele, Reuse, Treatment and Discharge of the Concentrate of Pressure-Driven Membrane Processes, *Environ. Sci. Technol.*, 37 (2003) 3733-3738.
- [20] V. Lindstrand, G. Sundstrom, A.S. Jonsson, Fouling of electro dialysis membranes by organic substances, *Desalination*, 128 (2000) 91-102.
- [21] K.M. Agbedoko, B. Legube, S. Dard, Atrazine and simazine removal mechanisms by nanofiltration: Influence of natural organic matter concentration, *Water Res.*, 30 (1996) 2535-2542.
- [22] M. Kumar, L. Philip, Adsorption and desorption characteristics of hydrophobic pesticide endosulfan in four Indian soils, *Chemosphere*, 62 (2006) 1064-1077.
- [23] H.J. Lee, D.H. Kim, J. Cho, S.H. Moon, Characterization of anion exchange membranes with natural organic matter (NOM) during electro dialysis, *Desalination*, 151 (2002) 43-52.
- [24] J.S. Park, H.J. Lee, S.H. Moon, Determination of an optimum frequency of square wave power for fouling mitigation in desalting electro dialysis in the presence of humate, *Sep. Purif. Technol.*, 30 (2003) 101-112.
- [25] F.H. Frimmel, Characterization of natural organic matter as major constituents in aquatic systems, *J. Contam. Hydrol.*, 35 (1998) 201-216.
- [26] Y.P. Chin, G. Aiken, E. O'Loughlin, Molecular Weight, Polydispersity, and Spectroscopic Properties of Aquatic Humic Substances, *Environ. Sci. Technol.*, 28 (1994) 1853-1858.
- [27] J.S. Park, J.H. Choi, K.H. Yeon, S.H. Moon, An approach to fouling characterization of an ion-exchange membrane using current-voltage relation and electrical impedance spectroscopy, *J. Colloid Interface Sci.*, 294 (2006) 129-138.
- [28] Astom Corporation, www.astom-corp.jp/en, accessed 09/2009.
- [29] S.M. Peterson, G.E. Batley, The fate of endosulfan in aquatic ecosystems, *Environ. Pollut.*, 82 (1993) 143-152.
- [30] S. Tanaka, Y. Nakata, H. Kuramitz, M. Kawasaki, Electrochemical Decomposition of Bisphenol A and Nonylphenol Using a Pt/Ti Electrode, *Chem. Lett.*, 28 (1999) 943-944.
- [31] K.A. Mauritz, C.E. Rogers, A water sorption isotherm model for ionomer membranes with cluster morphologies, *Macromolecules*, 18 (1985) 483-491.
- [32] R.P. Schwarzenbach, P.M. Gschwend, D.M. Imboden, *Environmental organic chemistry*, 2nd ed., John Wiley & Sons, Hoboken, USA, 2003.
- [33] W. Pronk, M. Biebow, M. Boller, Electro dialysis for recovering salts from a urine solution containing micropollutants, *Environ. Sci. Technol.*, 40 (2006) 2414-2420.
- [34] L.J. Banasiak, Removal of inorganic and trace organic contaminants by electro dialysis, PhD Thesis, University of Edinburgh, Edinburgh, 2010.
- [35] M.E. Williams, J.A. Hestekin, C.N. Smothers, D. Bhattacharyya, Separation of organic pollutants by reverse osmosis and nanofiltration membranes: mathematical models and experimental verification, *Ind. Eng. Chem. Res.*, 38 (1999) 3683-3695.
- [36] L.D. Nghiem, A.I. Schäfer, Adsorption and transport of trace contaminant estrone in NF/RO membranes, *Environ. Eng. Sci.*, 19 (2002) 441-451.
- [37] A.A. Lipovski, T.A. Dem'yanova, Investigation of hydrogen bonding involving anions of alkylammonium salts, *J. Appl. Spectrosc.*, 15 (1971) 1254-1256.
- [38] J.C. Ma, D. Dougherty, The cation- π interactions, *Chem. Rev.*, 97 (1997) 1303-1324.
- [39] C. Nerin, A.R. Tornés, C. Demoño, J. Cacho, Absorption of pesticides on plastic films used as agricultural soil covers, *J. Agric. Food. Chem.*, 44 (1996) 4009-4014.
- [40] S. Hengpraprom, C.M. Lee, J.T. Coates, Sorption of humic acids and α -endosulfan by clay minerals, *Environ. Toxicol. Chem.*, 25 (2006) 11-17.
- [41] S. Chang, T.D. Waite, A.I. Schäfer, A.G. Fane, Adsorption of the endocrine-active compound estrone on microfiltration hollow fiber Membranes, *Environ. Sci. Technol.*, 37 (2003) 3158-3163.
- [42] J.H. Kwon, H.M. Liljestränd, L.E. Katz, Partitioning of moderately hydrophobic endocrine disrupters between water and synthetic membrane vesicles, *Environ. Toxicol. Chem.*, 25 (2006) 1984-1992.

- [43] D.W. Kolpin, E.T. Furlong, M.T. Meyer, E.M. Thurman, S.D. Zaugg, L.B. Barber, H.T. Buxton, Pharmaceuticals, hormones, and other organic wastewater contaminants in US streams 1999-2000: a national reconnaissance, *Environ. Sci. Technol.*, 36 (2002) 1202-1211.
- [44] D.R. Lide, *CRC Handbook of Chemistry and Physics*, CRC Press/Taylor and Francis, Boca Raton, USA, 2008.
- [45] SIS, ChemIDplus Advanced, United States National Library of Medicine, 2009.
- [46] Advanced Chemistry Development Inc., ACD/ChemSketch Freeware, version 10.00, Toronto, Canada, 2007.
- [47] C. Hansch, A. Leo, D. Hoekman, *Exploring QSAR: Hydrophobic, Electronic, and Steric Constants*, American Chemical Society, Washington DC, USA, 1995.
- [48] SRC, Syracuse Research Corporation Interactive LogKow (KowWin) Demo, 2009.

Table Captions

Table 1. Physicochemical characteristics of endosulfan compounds and the hormone estrone.

Table 1

Property	Endosulfan				Estrone
	α	β	Sulfate	Diol	
Formula	C ₉ H ₆ Cl ₆ O ₃ S	C ₉ H ₆ Cl ₆ O ₃ S	C ₉ H ₆ Cl ₆ O ₄ S	C ₉ H ₈ Cl ₆ O ₂	C ₁₈ H ₂₂ Cl ₂
Molecular Weight (g/mol)	406.93	406.93	422.9	360.88	270.4
Solubility in water (mg/L 20°C) [44-45]	0.51	0.45	0.48	300	1.3-30 (25°C)
pK _a [42, 46]	-	-	-	14.62-15.22	10.34
Log K _{ow} [47] ^a	3.83 (3.50)	3.83 (3.50)	3.66 (3.64)	(3.68)	3.13 (3.43)
Hydrogen acceptors	3	3	4	2 (bipolar)	2
Hydrogen donors	0	0	0	2 (bipolar)	1
Structure ^b					

^a Values inside parentheses are estimated using KowWin Log P software [48]; ^b Asterisk on α -ES indicates location of ¹⁴C radiolabel.

Figure Captions

Figure 1. Concentration ($\mu\text{g/L}$) of α -ES, ES sulfate and ES diol within the concentrate (A, B) and diluate (C, D) at pH 3 and pH 7 (Average initial concentration of α -ES and ES sulfate were 92.4 and 92.0 $\mu\text{g/L}$, respectively).

Figure 2. ES sorption isotherms for the ion exchange membranes (A) CEMs and (B) AEMs with and without HA (\pm S.D. given to indicate standard deviation associated with data; time used to determine $\log K_{AEM/CEM}$: 100 h).

Figure 3. Schematic of possible interactions between ES molecules and the CEM and AEM functional groups (Functional groups attached to polystyrene-divinylbenzene (PS-DVB) copolymer matrix).

Figure 4. Sorption ($\mu\text{g}/\text{cm}^3$) of ES to ion-exchange membranes during ED experiments (Average initial mass of ES $11176 \pm 317 \mu\text{g}$).

Figure 5. Sorption ($\mu\text{g}/\text{cm}^3$) of ES and estrone during mixed ED experiments (Initial mass of ES and estrone in solution were $889 \pm 13 \mu\text{g}/\text{cm}^3$ and $904 \pm 37 \mu\text{g}/\text{cm}^3$, respectively).

Figure 1

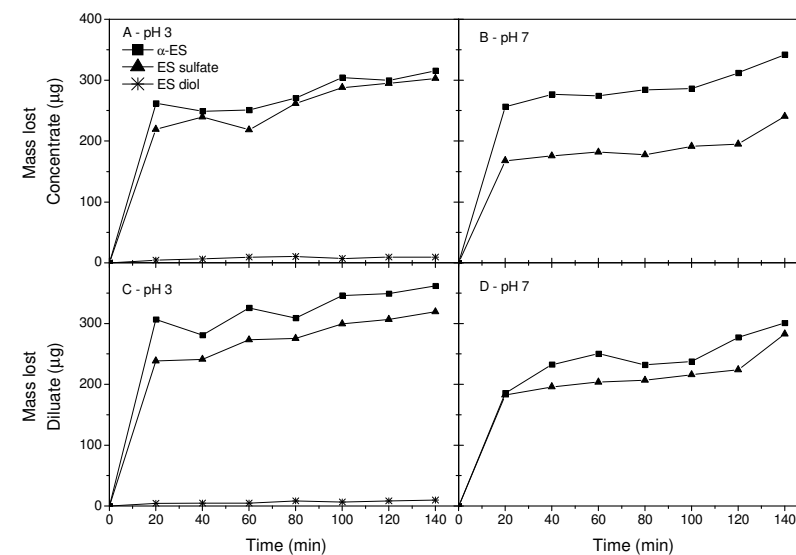


Figure 2

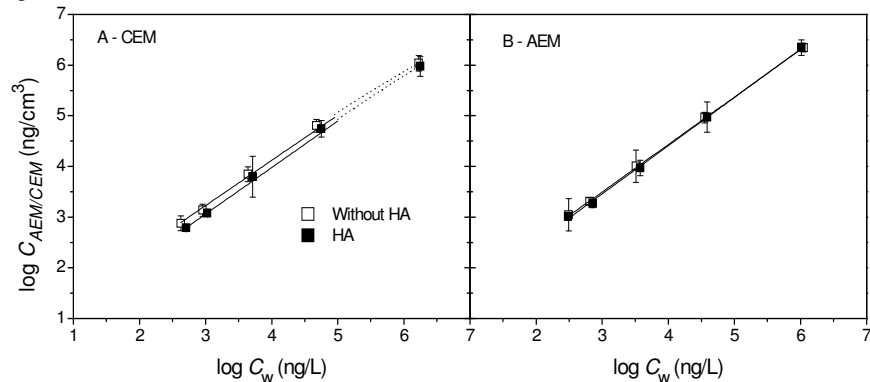


Figure 3

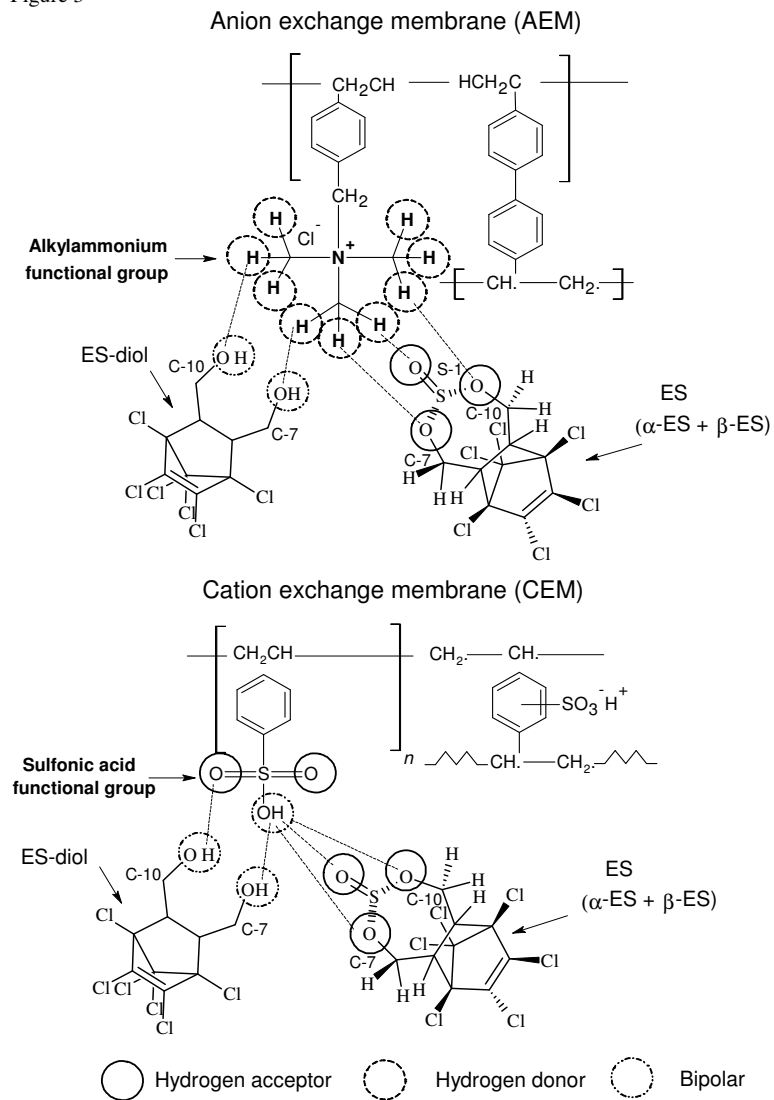


Figure 4

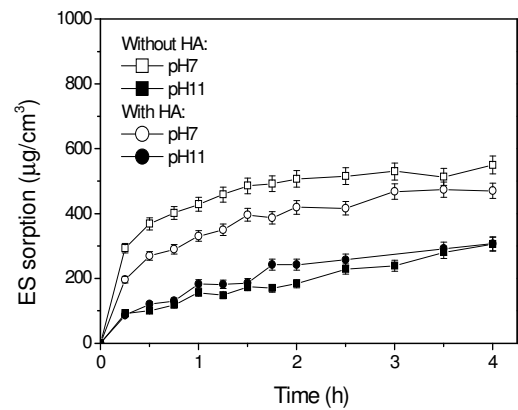
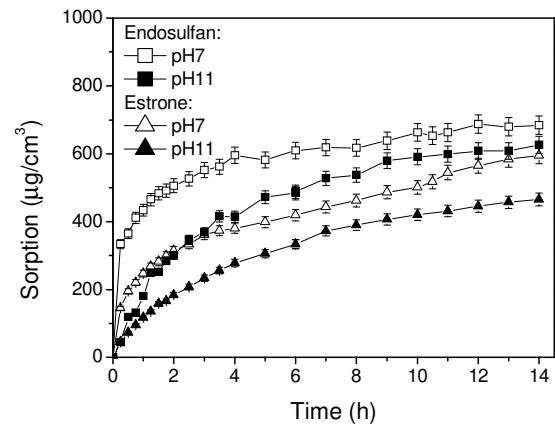


Figure 5



Appendix A

Sorption of Pesticide Endosulfan by Electrodialysis Membranes

Laura J. Banasiak¹, Bart Van der Bruggen² and Andrea I. Schäfer^{1,*}

¹ School of Engineering, The University of Edinburgh, Edinburgh EH9 3JL, United Kingdom;

² Laboratory for Applied Physical Chemistry and Environmental Technology, Department of Chemical Engineering, Katholieke Universiteit Leuven, W. de Croylaan 46, 3001 Leuven, Belgium

* Corresponding author: Phone: +44 (0) 131 650 7860; Fax: +44 (0) 131 650 7209; Email: Andrea.Schaefer@ed.ac.uk

Overview of Appendix A

In this Appendix we present:

1. Endosulfan sorption kinetics during 1 µg/L endosulfan sorption isotherm experiments;
2. Mathematical equations related to the determination of the mass of endosulfan sorbed to membranes during batch isotherm experiments;
3. Information regarding the determination of the water-membrane partition coefficients ($\log K_{AEM/CEM}$);
4. Endosulfan desorption kinetics during 0.002 M HCl, NaOH and ultrapure water desorption experiments;
5. Details on trace organic sorption of steroidal hormones to ion-exchange membranes from study by Banasiak [34];
6. Figure showing the concentration of endosulfan within the diluate and concentrate at pH 7 and 11 during batch ED experiments.

All information found in this Appendix also referred to in the manuscript.

Endosulfan sorption kinetics during 1 µg/L endosulfan sorption isotherm experiment

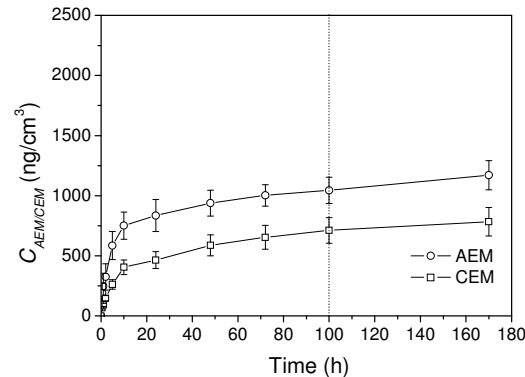


Figure A1. ES sorption kinetics for the AEM and CEM (1mM NaHCO₃, 85.5 mM NaCl, pH 7, 1 µg/L ES; Vertical dotted line indicates time chosen for $\log K_{AEM/CEM}$ determination).

Determination of mass of endosulfan sorbed to membrane during batch isotherm experiments

The mass of ES sorbed to each membrane ($m_{AEM/CEM}$, µg or ng) was calculated using mass balance eqn (A1).

$$m_{AEM/CEM} = m_w^0 - m_w^e = C_w^0 V_w^0 - C_w^e V_w^e \quad (A1)$$

where, m_w^0 and m_w^e are the initial (superscript 0) and $t = 100$ hr (superscript e) mass of ES freely dissolved in aqueous solution (subscript w) (µg or ng), C_w^0 and C_w^e are the initial and $t = 100$ hr ES concentration (µg/L or ng/L), V_w^0 and V_w^e are the initial and $T = 100$ hr solution volumes (L).

Equilibrium concentrations of ES sorbed per unit volume of membrane (C_{CEM} or C_{AEM} , µg/cm³ or ng/cm³) were calculated using eqn (A2).

$$C_{AEM/CEM} = \frac{m_{AEM/CEM}}{V_{AEM/CEM}} = \frac{(C_w^0 - C_w^e)V_w}{V_{AEM/CEM}} \quad (A2)$$

where, $V_{AEM/CEM}$ is the AEM or CEM membrane volume (cm³).

Partition Coefficient ($K_{AEM/CEM}$) Determinations

The partition coefficient, $K_{AEM/CEM}$ (L/cm³) for ES between the respective membrane (AEM or CEM) and the bulk solution was evaluated using eqn (A3)

$$K_{AEM/CEM} = \frac{C_{AEM/CEM}}{C_w^t} = \frac{m_{AEM/CEM}}{V_{AEM/CEM}} \cdot \frac{V_w}{m_w^t} \quad (A3)$$

where $C_{AEM/CEM}$ is the concentration of ES sorbed per unit volume of membrane at time $t = 100$ h (µg/cm³ or ng/cm³), C_w^t is the ES concentration (µg/L or ng/L), $m_{AEM/CEM}$ is the mass of ES sorbed to each membrane (µg or ng), $V_{AEM/CEM}$ is the AEM or CEM membrane volume (cm³), V_w is the solution volume (L) and m_w^t is the mass of ES freely dissolved in aqueous solution (subscript w) (µg or ng).

$\log K_{AEM/CEM}$ can be derived from the slope of the linear regression of $C_{AEM/CEM}$ as a function of C_w^t if the sorption isotherms (plotted on a log scale) are linear. Since the concentration range is several orders of magnitude, the sorption isotherms were plotted on a log scale (eqn (A4)) and the slope of the regression n_i indicates the sorption isotherm deviation from linearity [32].

$$\log C_{AEM/CEM} = \log K_{AEM/CEM} + n_i \log C_w^t \quad (A4)$$

As n_i was close to 1 for all isotherms, this was set to 1, which is equivalent to the linear relationship described by eqn (A3). Standard deviation (S.D.) associated with $\log C_{AEM/CEM}$ values were calculated and presented as \pm S.D. Confidence intervals of the mean associated with the $\log C_{AEM/CEM}$ and $\log K_{AEM/CEM}$ values were also calculated and presented as \pm C.I.

Endosulfan desorption kinetics during 0.002 M HCl, NaOH and ultrapure water desorption experiments

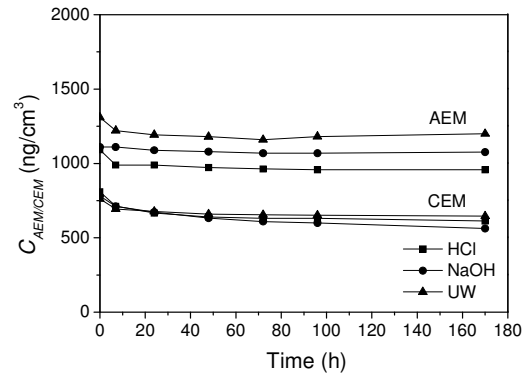


Figure A1. ES desorption kinetics for the AEM and CEM (1mM NaHCO₃, 85.5 mM NaCl, 0.002 M HCl, 0.002 M NaOH and ultrapure water (UW)).

Details on trace organic sorption of steroidal hormones to ion-exchange membranes from study by Banasiak [34]

The mechanisms of sorption of four steroidal hormones – estradiol, estrone, progesterone and testosterone – to ED membranes were investigated as a function of solution pH and presence of HA. Water-membrane partition coefficients ($\log K_{AEM/CEM}$) were determined through batch sorption isotherm experiments using the same methods as this present study. Although Pronk *et al.* [33] postulated that hormone sorption to ion-exchange membranes was related to hydrophobicity, poor correlation between hormone $\log K_{ow}$ and $\log K_{AEM/CEM}$ values suggested that other mechanisms, such as electrostatic interactions and hydrogen bonding, were important in hormone sorption at neutral pH.

Concentration ($\mu\text{g/L}$) of endosulfan in the diluate and concentrate at pH 7 and pH 11 in batch ED experiments

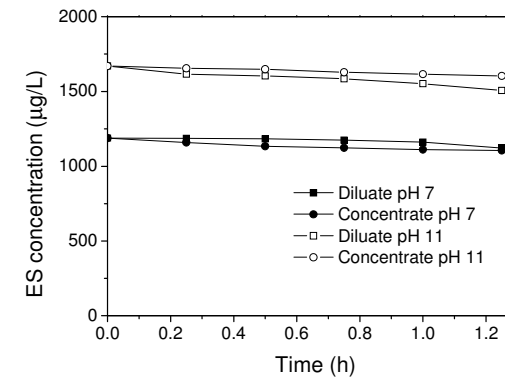


Figure A2. Concentration ($\mu\text{g/L}$) of ES in the diluate and concentrate at pH 7 and pH 11 in batch ED experiments without humic acid (1 mM NaHCO₃, 85.5 mM NaCl, 10 V; ES initial concentration: pH 7 1188 $\mu\text{g/L}$, pH 11 1670 $\mu\text{g/L}$).