



THE UNIVERSITY *of* EDINBURGH

Edinburgh Research Explorer

Early interpretation of scalar quantifiers in context

Mouse-tracking evidence for the role of social reasoning

Citation for published version:

Li, W, Rohde, H & Corley, M 2022, 'Early interpretation of scalar quantifiers in context: Mouse-tracking evidence for the role of social reasoning', AmLaP 2022, York, United Kingdom, 7/09/22 - 9/09/22.

Link:

[Link to publication record in Edinburgh Research Explorer](#)

Document Version:

Peer reviewed version

General rights

Copyright for the publications made accessible via the Edinburgh Research Explorer is retained by the author(s) and / or other copyright owners and it is a condition of accessing these publications that users recognise and abide by the legal requirements associated with these rights.

Take down policy

The University of Edinburgh has made every reasonable effort to ensure that Edinburgh Research Explorer content complies with UK legislation. If you believe that the public display of this file breaches copyright please contact openaccess@ed.ac.uk providing details, and we will remove access to the work immediately and investigate your claim.



Early interpretation of scalar quantifiers in context: Mouse-tracking evidence for the role of social reasoning

Wei Li¹, Hannah Rohde², Martin Corley¹

¹Psychology, PPLS, University of Edinburgh, UK

²LEL, PPLS, University of Edinburgh, UK

Contact Author: Wei Li (s1833067@ed.ac.uk)

The scalar quantifier *some* is ambiguous between a literal (some and possibly all) and a pragmatic (some but not all) meaning. Loy et al. (2019) investigated how its interpretation was affected by a speaker's manner of speech. They showed that where speakers were disfluent ("I ate, uh, some oreos"), listeners were more likely to make an early commitment to a literal interpretation than when the speakers were fluent. However, it remains unclear whether this reflects a simple effect of disfluency, or whether it reflects listeners' rapid reasoning in a context where *some* interpreted as *some and possibly all* (eating more oreos) is socially undesirable.

Here, we disentangle these two possibilities, by using a different social context for the interpretation of *some*. In an online mouse-tracking experiment, we use the context of a job interview, in which, critically, the literal meaning ("I got some and possibly all 'A's for my psychology courses") is expected to be the one that a speaker would likely prefer to convey, while the pragmatic implicature meaning ("I got some, but possibly fewer 'A's") is the one that the speaker would want to hide. Therefore, we ask whether the presence of disfluency favours the literal meaning (simple effect of disfluency regardless of context) or a pragmatic meaning (via social reasoning about concealing a context-specific socially undesirable meaning).

We recorded 150 participants' mouse movements in a web-based task in which we manipulated disfluency (present vs. absent) within-subjects in a set of 12 target trials. In each target trial, participants saw four images with different numbers of qualifications, each representing one of four potential interpretations of the meaning of *some* (Fig. 1), and heard an interviewer ask an interviewee about their qualifications (Example 1). Each session additionally included 24 filler trials, which did not contain *some* or the disfluency 'uh'. We measured both the final click results (i.e., which image each participant clicked at the end) as well as the trajectories of participants' mouse movement during each trial.

The total numbers of clicks on each image by condition are shown in Table 1. Participants' responses confirm that the presence of disfluency does bias interpretation in favour of the socially undesirable meaning, but here that meaning is not the literal interpretation of *some*: For the disfluent compared to the fluent condition, there were fewer clicks on the two- and four-A images, but more clicks on the one-A image. Clicks on the one-A image were modelled using a mixed-effects logistic regression with the within-participant predictor of manner of delivery (fluent and disfluent), including random intercepts and slopes by participant and trial. Participants were more likely to click on the one-A image following a disfluent utterance compared to a fluent utterance ($\beta = 8.074$, $SE = 0.591$, $p = <0.001$).

Figure 2 shows participants' aggregated mouse trajectories towards each image in each condition (disfluent/fluent). The colours of points (from red points at the centre of the screen to violet in each corner) indicate each 10% of trial time. Only the patterns of mouse movements in which participants eventually click on the one-A image show obvious differences. Participants appear to move faster, and more directly, towards the one-A image in the disfluent condition. In the fluent condition, they show hesitant movements towards other images, taking more of the time before they click to decide to move towards and click the one-A target.

This preliminary exploration of the mouse-tracking leads to two important conclusions. First, in this context (in which it is desirable to have more qualifications), disfluency does bias towards interpretations of *some* which imply smaller numbers (the pragmatic interpretation). In fact, it would appear that the literal meaning of *some* is quite often ignored (in 17% of disfluent trials and 8% of fluent trials), leading instead to an interpretation where *some* implies one. Taken together with the results from Loy et al. (2019), this suggests that listeners take the social context into account when reasoning about scalar quantifiers such as *some*. Second, this reasoning happens very quickly: Where utterances are disfluent, listeners make the decision to select the one-A target (if they are going to) very quickly, and initiate mouse

movements appropriately. Where the utterances are fluent, however, they are more hesitant, showing early movements which suggest that the two-A (literal-compatible) interpretation of *some* is initially in contention.

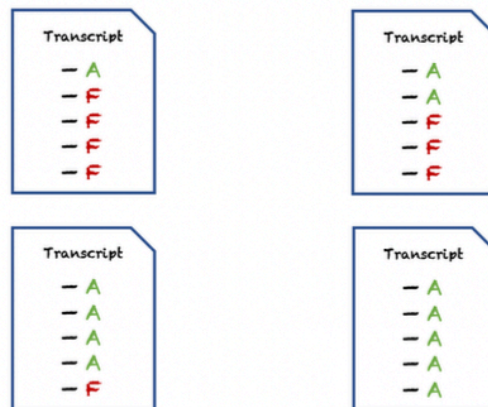


Fig. 1 One example of screen display presented in a target trial

Example 1

How many 'A's have you got for your psychology-related courses?
 (a) I've got *some* 'A's.
 (b) I've got, uh, *some* 'A's.

Table 1:

Total number of mouse clicks recorded on each qualification image (named respectively as one-A, two-A, four-A, or all-A for the convenience of presenting) by manner of delivery (disfluent/fluent)

Condition	One A	Two As	Four As	All As
Disfluent	148	688	45	0
Fluent	67	724	78	1

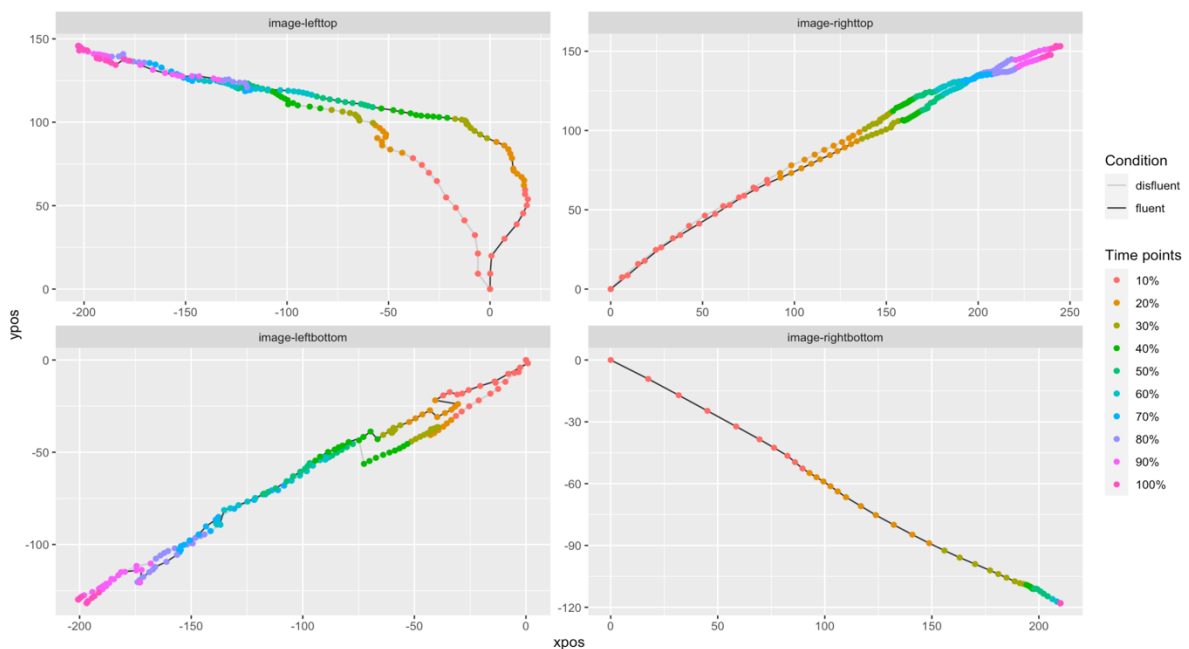


Fig.2 Aggregated mouse trajectories towards four images by condition (disfluent/fluent), and the colours of points (from red points at the centre of the screen to violet in each corner) indicate 10%, 20%, 30%...100% of trial time

Reference

Loy, J. E., Rohde, H., & Corley, M. (2019). Real-time social reasoning: The effect of disfluency on the meaning of *some*. *Journal of Cultural Cognitive Science*, 3(2), 159-173.