



THE UNIVERSITY *of* EDINBURGH

Edinburgh Research Explorer

Feasibility of a multiparametric MRI protocol for imaging biomarkers associated with neoadjuvant radiotherapy for soft tissue sarcoma

Citation for published version:

Kershaw, L, Forker, L, Roberts, D, Sanderson, B, Shenjere, P, Wylie, J, Coyle, C, Kochhar, R, Manoharan, P & Choudhury, A 2021, 'Feasibility of a multiparametric MRI protocol for imaging biomarkers associated with neoadjuvant radiotherapy for soft tissue sarcoma', *BJR|Open*, vol. 3, no. 1, 20200061.
<https://doi.org/10.1259/bjro.20200061>

Digital Object Identifier (DOI):

[10.1259/bjro.20200061](https://doi.org/10.1259/bjro.20200061)

Link:

[Link to publication record in Edinburgh Research Explorer](#)

Document Version:

Publisher's PDF, also known as Version of record

Published In:

BJR|Open

General rights

Copyright for the publications made accessible via the Edinburgh Research Explorer is retained by the author(s) and / or other copyright owners and it is a condition of accessing these publications that users recognise and abide by the legal requirements associated with these rights.

Take down policy

The University of Edinburgh has made every reasonable effort to ensure that Edinburgh Research Explorer content complies with UK legislation. If you believe that the public display of this file breaches copyright please contact openaccess@ed.ac.uk providing details, and we will remove access to the work immediately and investigate your claim.



Received:
16 October 2020

Revised:
14 December 2020

Accepted:
04 January 2021

Cite this article as:

Kershaw L, Forker L, Roberts D, Sanderson B, Shenjere P, Wylie J, et al. Feasibility of a multiparametric MRI protocol for imaging biomarkers associated with neoadjuvant radiotherapy for soft tissue sarcoma. *BJR Open* 2021; **3**: 20200061.

ORIGINAL RESEARCH

Feasibility of a multiparametric MRI protocol for imaging biomarkers associated with neoadjuvant radiotherapy for soft tissue sarcoma

¹LUCY KERSHAW, PhD, ²LAURA FORKER, MBChB Hons MRes, ²DARREN ROBERTS, PhD, ¹BENJAMIN SANDERSON, MBBS, ¹PATRICK SHENJERE, MBChB, MMed(Histopath), FRCPath, FEBP, ³JAMES WYLIE, MBBS, MRCP, FRCR, ³CATHERINE COYLE, MB, Bch BaO, MRCP, FRCR, PGCE, ⁴ROHIT KOCHHAR, MBBS, MD, DNB, FRCR, ⁴PRAKASH MANOHARAN, MBChB MRCP FRCR and ⁵ANANAYA CHOUDHURY

¹The University of Manchester, Manchester Academic Health Science Centre, The Christie NHSFT, Manchester, United Kingdom

²Translational Radiobiology Group, Division of Cancer Sciences, The University of Manchester, Manchester Academic Health Science Centre, The Christie NHSFT, Manchester, United Kingdom

³Dept of Histopathology, The Christie NHSFT, Manchester, United Kingdom

⁴Dept of Clinical Oncology, The Christie NHSFT, Manchester, United Kingdom

⁵Dept of Radiology, The Christie NHSFT, Manchester, United Kingdom

Address correspondence to: Dr Lucy Kershaw
E-mail: lucy.kershaw@ed.ac.uk

Objective: Soft tissue sarcoma (STS) is a rare malignancy with a 5 year overall survival rate of 55%. Neoadjuvant radiotherapy is commonly used in preparation for surgery, but methods to assess early response are lacking despite pathological response at surgery being predictive of overall survival, local recurrence and distant metastasis. Multiparametric MR imaging (mpMRI) is used to assess response in a variety of tumours but lacks a robust, standardised method. The overall aim of this study was to develop a feasible imaging protocol to identify imaging biomarkers for further investigation.

Methods: 15 patients with biopsy-confirmed STS suitable for pre-operative radiotherapy and radical surgery were imaged throughout treatment. The mpMRI protocol included anatomical, diffusion-weighted and dynamic contrast-enhanced imaging, giving estimates of apparent diffusion coefficient (ADC) and the area under the enhancement curve at 60s (iAUC₆₀). Histological

analysis of resected tumours included detection of CD31, Ki67, hypoxia inducible factor and calculation of a hypoxia score.

Results: There was a significant reduction in T1 at visit 2 and in ADC at visit 3. Significant associations were found between hypoxia and pre-treatment iAUC₆₀, pre-treatment ADC and mid-treatment iAUC₆₀. There was also statistically significant association between mid-treatment ADC and Ki67.

Conclusion: This work showed that mpMRI throughout treatment is feasible in patients with STS having neoadjuvant radiotherapy. The relationships between imaging parameters, tissue biomarkers and clinical outcomes warrant further investigation.

Advances in knowledge: mpMRI-based biomarkers have good correlation with STS tumour biology and are potentially of use for evaluation of radiotherapy response.

INTRODUCTION

Soft tissue sarcoma (STS) is a rare and heterogeneous malignancy. There were 3298 new diagnoses in the UK in 2010, and the 5 year overall survival rate was 55%.¹ Tumour grade is prognostic, with 5 year metastasis-free survival rates of 71 and 44% for intermediate and high grade tumours respectively.² Surgery, the main treatment for STS of the limb and trunk, involves excising the lesion along with a tumour-free margin of around 1–2 cm, subject to anatomical constraints. In intermediate/high grade tumours or those which require extensive surgery, this is often not possible without risk to function. In these situations, radiotherapy is employed

either pre- or post-operatively. Post-operative radiotherapy requires a higher dose being delivered to a larger volume but can be reserved for situations where an inadequate margin is obtained. Pre-operative radiotherapy may be used to shrink a tumour, for some subtypes³ making a tumour more operable,⁴ or to sterilise the margins in preparation for excision.⁵ The use of a lower dose and reduction in the irradiated volume for pre-operative compared to post-operative radiotherapy results in similar local control, but with a reduction in late toxicity and better function.⁶ There is no consensus on the optimal approach

for radiotherapy in STS, with a rationale for both pre- and post-surgical radiotherapy.

There is currently no method to assess early response to pre-operative radiotherapy, despite pathological response at surgery being predictive of overall survival, local recurrence⁷ and distant metastasis.^{8,9} Imaging biomarkers are attractive because they are non-invasive, and MR is available in most centres. Volume change in STS during pre-operative radiotherapy is minimal despite marked pathological response,³ and tumour size changes (RECIST criteria and/or three-dimensional tumour volumes) are poor predictors of tumour-free surgical margins, local control⁴ and overall survival.¹⁰

Multiparametric MR imaging (mpMRI) has been used to demonstrate radiotherapy response early in treatment, which might allow prompt progression to definitive treatment in poorly responding tumours.¹¹⁻¹³ Conversely, some STS such as myxoid liposarcoma may respond adequately with lower doses of radiotherapy reducing late effects without compromising outcome.¹⁴ Use of functional measures such as dynamic contrast-enhanced (DCE) MRI (measuring tissue microvasculature), and diffusion-weighted imaging (DWI) (measuring restriction of water molecule diffusion) has been shown to increase the ability of imaging

to reflect the amount of tumour necrosis,¹⁵⁻¹⁸ but protocols varied widely and image analysis often required careful selection of tumour subregions. Delivery of a robust protocol suitable for large multicentre studies is challenging. This study aligns with domain I of the imaging biomarker road map,¹⁹ assessing the feasibility of delivering a robust protocol across different anatomical sites, but within a single institute.

The overall aim of this study was to identify imaging parameters suitable for investigation as prognostic factors in a larger study. The specific aims were to: (i) develop a well-tolerated imaging protocol allowing for repeat scanning, (ii) identify imaging parameters that change significantly during radiotherapy, and (iii) determine relationships between imaging parameters and histological features in resected tumour tissue. As part of this exploratory assessment, particular attention was focussed on post-surgical hypoxic regions in the resected tumour, a parameter known to affect survival.^{20,21}

METHODS AND MATERIALS

Patients

In this prospective study, 15 patients with biopsy-confirmed intermediate or high-grade STS suitable for pre-operative

Table 1. Patient characteristics

Patient	Age at first scan	M/F	Tumour location	Tumour type, grade, stage	Status as of Jan 2019
1	73	M	Upper arm	Undifferentiated spindle cell G2, T2bN0M0	No disease
2	56	M	Trunk	Myxoid liposarcoma G3, T2bN0M0	No disease
3	79	M	Upper arm	Myxofibrosarcoma G2, T1bN0M0	No disease
4	27	M	Knee	Myxoid liposarcoma G3, T2bN0M0	No disease
5	29	M	Lower leg	Myxoid chondrosarcoma G3, T2bN0M0	No disease
6	69	F	Trunk	Undifferentiated pleomorphic sarcoma G3, T1aN0M0	No disease
7	41	M	Lower leg	Myxofibrosarcoma G3, T2bN0M0	No disease but chronic inflammation post-surgery
8	62	M	Forearm	Myxofibrosarcoma G3, T1bN0M0	No disease
9	24	M	Knee	Synovial sarcoma G3, T2bN0M0	Lung metastasis resected June 2018, now no disease
10	67	M	Knee	Undifferentiated pleomorphic sarcoma G3, T2bN0M0	Died (Acute Myeloid Leukaemia) Feb 2018
11	33	M	Thigh	Myxoid liposarcoma G3, T2bN0M0	Single metastasis in spine August 2018
12	74	M	Trunk	Undifferentiated spindle cell sarcoma G3, T2bN0M0	No disease

Table 2. Trial imaging protocol

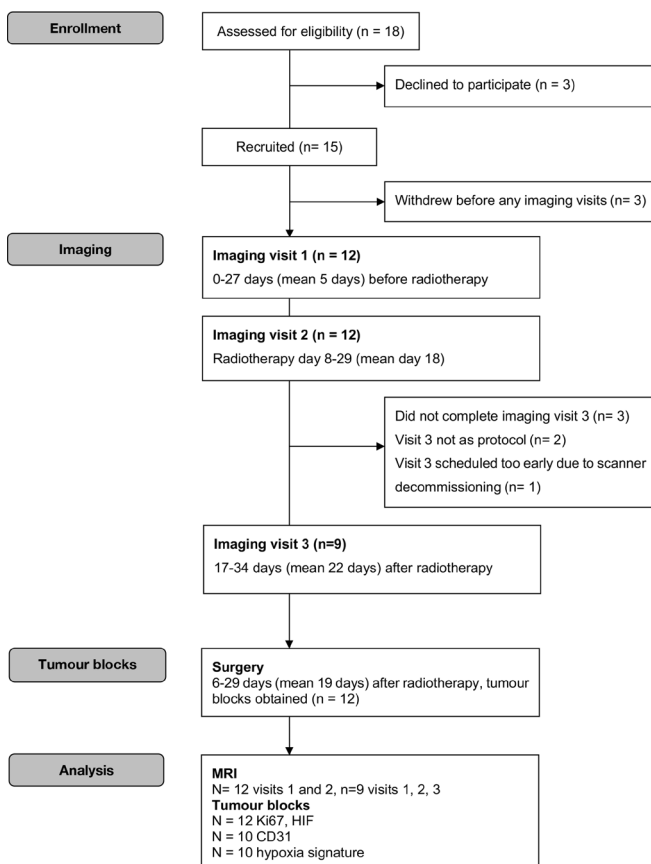
Sequence	Purpose	Flip angle, TE, TR / ms	Parallel imaging factor	Other	Matrix	FOV / cm
TSE 2D Turbo spin-echo	High resolution T_2W for tumour outlining	150° 96, 3890	None	ETL 13	256 × 256 × 20	Limb: 25 × 25 × 10 Trunk: 38.6 × 38.6 × 10
EPI 2D Echoplanar imaging	Diffusion-weighted imaging	- 103, 1,2100	2 AP	EPI factor 128, B = 0, 50, 100, 150, 200, 500, 1000 s/mm ²	128 × 128 × 20	
SRTFE 3D Saturation-recovery turbo field echo	T1 measurement	12° 1.52 64, 142, 292, 1050, 2550, 3950	2 AP	TI = 37, 100, 250, 1000, 2500, 3900 ms		
VIBE 3D Volume-interpolated breath-hold imaging	Dynamic contrast-enhanced imaging	16° 0.81, 2.63	2 AP	Temporal resolution 1.75 s, 150 dynamics		

TE, echo time; TR, repetition time; TI, inversion time; FOV, field of view; 2D, two-dimensional; 3D, three-dimensional.

^aIn one case, 26 slices were needed to cover the tumour, leading to a dynamic temporal resolution of 3.2 s, and TR values for the SRTFE of 73, 145, 306, 1060, 2560, and 3960 ms.

radiotherapy (50 Gy in 25 fractions) and radical surgery were recruited. This study had a favourable ethical opinion (13/NW/0500) and all patients gave written informed consent. Patient characteristics are summarised in Table 1.

Figure 1. Modified CONSORT diagram.



Patients underwent MRI before radiotherapy (within 4 weeks of the start of treatment), in week 2 or 3 of radiotherapy, and 2–4 weeks after radiotherapy. Within 1 month of the post-radiotherapy visit, the tumours were surgically resected. At surgery, proximal, distal, medial, lateral, depth and superficial margins were demarcated.

Imaging protocol

Patients were imaged at 1.5 T (Siemens MAGNETOM Avanto, Siemens Healthineers, Erlangen, Germany) using either the peripheral or body matrix coil with the appropriate elements of the spine array. Imaging began with standard clinical sequences

Figure 2. Box plot showing median T1 (box middle line), lower and upper quartiles (box edges) and data range (whiskers) over all patients for three visits. Outliers are shown as diamonds. There was a significant difference between median T1 at visit 2 compared with visit 1 (Wilcoxon signed ranks test, $p=0.008$). No other significant differences were detected.

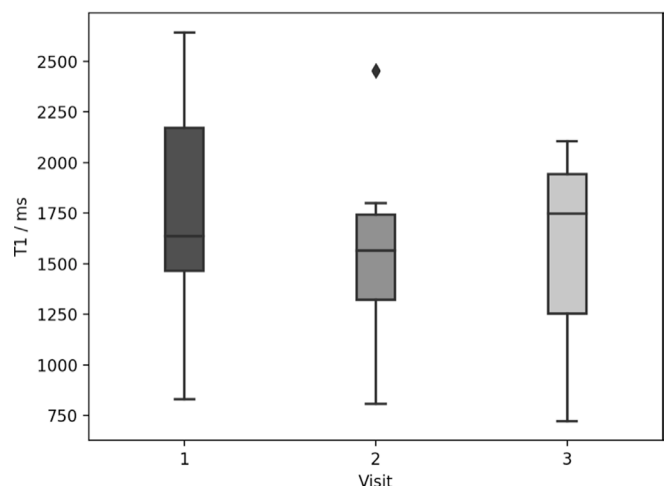
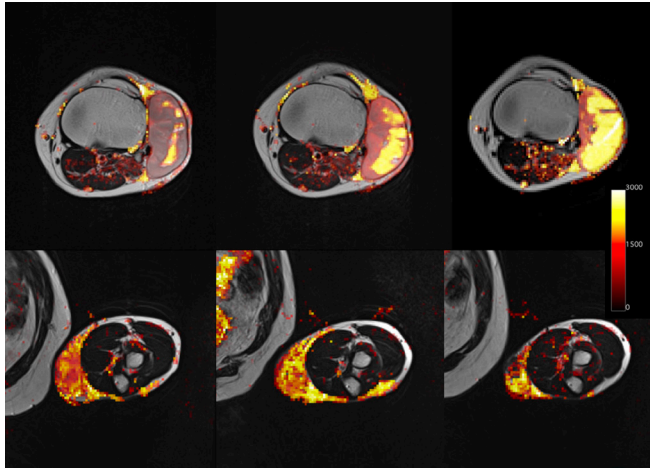


Figure 3. Example ADC (apparent diffusion coefficient, $\times 10^{-6}$ mm²/s) maps superimposed on anatomical T₂w images over three visits (left – before radiotherapy, centre – during radiotherapy, right – after radiotherapy) for two patients (Upper panel, lower panel).



(pre-contrast transverse and coronal T₁W and T₂W, post-contrast transverse and coronal T₁W with fat saturation, all turbo spin echo) and continued with trial sequences as shown in Table 2. During the dynamic sequence, 0.1 ml/kg Gadovist was injected using a power injector at 2 ml s⁻¹, followed by 20 ml saline at the same rate.

Image analysis

ADC maps were calculated at the time of acquisition. Images were analysed using Python (v. 3.6). T1 maps were calculated by fitting the saturation recovery turbo FLASH equation on a pixel-by-pixel basis.²² The integrated area under the curve in the first 60 s after injection (iAUC₆₀) was calculated on a pixel-by-pixel basis using trapezoidal integration, after converting the signal intensity vs time curves to contrast agent concentration vs time curves.²³

Tumours were outlined on T₂W images by BS (confirmed by a consultant radiologist with expertise in MRI), and volumes automatically calculated from the known voxel size. These regions of interest (ROIs) were transferred to the dynamic images by nearest-neighbour interpolation and to the ADC maps by referring to anatomical landmarks to ensure that the tumour was correctly outlined even in the presence of distortion. ROIs were eroded in-plane by one pixel to avoid partial volume effects at the region edges. The median and interquartile range over the whole tumour ROI was calculated for ADC, iAUC₆₀ and T1.

Histological analysis of resected tumours

Immunohistochemistry was performed on 4 μm sections from formalin-fixed paraffin-embedded (FFPE) tumour resection samples to score hypoxia inducible factor-1 α (HIF-1α), carbonic anhydrase IX (CAIX), antigen KI-67 (Ki67) and CD31. HIF-1α, CAIX and Ki67 staining was performed using the Bond-Max Automated staining system (Leica Biosystems, Milton Keynes, UK). Slides were de-waxed and rehydrated and antigen retrieval

was carried out at pH 9.0 for 40 min at 100°C. The primary antibodies were HIF-1α (BD Biosciences 610959; 1:100 dilution), CAIX (NCL-L-CAIX, Novacastra, Leica Biosystems; 1:100 dilution), Ki67 (clone MIB-1, Dako M7240; 1:100 dilution), and CD31 (M0823 Dako; 1:50 dilution). For HIF-1α, Ki67 and CD31 the negative control was mouse IgG1 (Dako X0931) and for CAIX was mouse IgG2a (Dako, Ely, UK, X0943). All dilutions were in antibody diluent (Leica AR9352) and negative controls were diluted to the same protein concentration as the primary. Slides were stained using a standard BOND processing protocol (available on request) and Bond Polymer Refine Detection System (Leica DS9800). Colorectal cancer cell line spheroids with a diameter <500 μm were used as a positive control for HIF-1α and CAIX. A FFPE biopsy of normal human placenta was used as a positive control for CD31.

The percentage of tumour cells per core expressing membranous CAIX was scored by a sarcoma pathologist (PS) at ×8 magnification with negative controls available for comparison. Other markers were scored using automated image analysis (Definiens tissue studio v. 4.2; Definiens, Munich, Germany).

The percentage of tumour material was assessed by a sarcoma pathologist (PS) on a separate H&E stained section. RNA from three 10 μm sections was extracted using the FFPE RNA/DNA Purification Plus Kit (Norgen, Thorold, Ontario, Canada) including DNase I treatment. The High-Capacity cDNA Reverse Transcription Kit (Life Technologies, Paisley, UK) was used to reverse transcribe total RNA. cDNA was preamplified using a custom pool of TaqMan assays (Life Technologies) and TaqMan PreAmp Master Mix (Life Technologies).

Expression of a 24-gene hypoxia signature derived for STS²⁴ and 2 endogenous control genes selected for STS²⁵ was determined using custom 384-well TaqMan array cards (Life Technologies) on a QuantStudio 12K Flex Real-Time PCR System (Life Technologies) using TaqMan Fast Advanced Master Mix (Life Technologies) according to the manufacturer's guidelines. The geometric mean of the endogenous control genes was used for normalisation. Hypoxia scores (HS) were calculated as the normalised median expression of the 24 hypoxia genes (note that the median is used due to the small sample size in this study, rather than the method presented previously).²⁴

Statistical analysis

In this small feasibility study, changes in median T1, ADC and iAUC₆₀ between the three visits were assessed using a Wilcoxon signed ranks test. Correlations between imaging and histology parameters were assessed by calculating the Pearson correlation coefficient and its associated *p*-value using the *t* distribution. Differences in imaging parameters between the tumours with and without CAIX staining was assessed using the Mann–Whitney *U* test. No correction was made for multiple comparisons.

RESULTS

Patients

Figure 1 shows a flow diagram for enrolment, imaging and analysis. Briefly, by the close of the study 15 patients were recruited

Table 3. Pearson correlation coefficients for correlations between imaging and histological parameters., with *p*-values calculated from a *t*-distribution shown in brackets

	T1	iAUC	ADC	Volume
Pre-treatment				
CD31	-0.07 (0.83)	-0.28 (0.37)	-0.16 (0.63)	-0.37 (0.23)
Ki67	-0.50 (0.10)	0.11 (0.74)	-0.55 (0.06)	-0.29 (0.36)
HIF	0.08 (0.80)	-0.40 (0.19)	0.04 (0.91)	-0.10 (0.76)
Hypoxia score	0.47 (0.12)	-0.64 (0.03)*	0.63 (0.03)*	-0.16 (0.63)
Mid-treatment				
CD31	-0.09 (0.78)	-0.43 (0.17)	-0.31 (0.32)	-0.32 (0.31)
Ki67	-0.43 (0.16)	-0.05 (0.88)	-0.66 (0.02)*	-0.31 (0.33)
HIF	0.03 (0.94)	-0.44 (0.16)	-0.10 (0.75)	-0.13 (0.68)
Hypoxia score	0.24 (0.45)	-0.63 (0.03)*	0.58 (0.05)	-0.14 (0.66)
Post-treatment				
CD31	-0.15 (0.63)	-0.26 (0.42)	-0.29 (0.36)	-0.13 (0.69)
Ki67	-0.57 (0.05)	-0.09 (0.78)	-0.44 (0.16)	-0.04 (0.66)
HIF	-0.27 (0.40)	-0.20 (0.53)	-0.36 (0.25)	-0.29 (0.37)
Hypoxia score	0.23 (0.43)	-0.27 (0.40)	0.34 (0.27)	-0.18 (0.57)

ADC, apparent diffusion coefficient; AUC, area under the curve; HIF, hypoxia inducible factor.

and 12 scanned (9 had three scans, 3 had only the first two). All collected data were included in our analysis. As of January 2019, one patient had died from acute myeloid leukaemia and two had developed metastatic disease (one patient had a lung metastasis resected and the other developed a solitary spinal metastasis).

Image analysis

No significant reduction in volume was observed across visits. The median volumes with their interquartile ranges in cm³ were: 29 (22–51) for visit 1, 34 (23–48) for visit 2 and 25 (10–32) for visit 3. In comparison with pre-radiotherapy values, there was a significant reduction in T1 at visit 2 ($p = 0.008$) (Figure 2) and in ADC at visit 3 ($p = 0.04$), with example ADC maps shown in Figure 3 for two patients. No significant changes in iAUC₆₀ were seen over the three visits.

Histological results

Pearson correlation coefficients between imaging and histological parameters are shown with their *p*-values in Table 3. Significant correlations were found between hypoxia scores and pre-treatment iAUC₆₀ ($r = -0.64$, $p = 0.03$), pre-treatment ADC ($r = 0.63$, $p = 0.03$) and mid-treatment iAUC₆₀ ($r = -0.63$, $p = 0.03$). There was also a significant correlation between mid-treatment ADC and Ki67 ($r = -0.66$, $p = 0.02$). Stratification of patients by CAIX staining demonstrated significant differences in T1 (visit 1 $p = 0.003$, visit 2 $p = 0.01$, visit 3 $p = 0.03$), and iAUC₆₀ at visit 1 ($p = 0.03$).

Discussion

In this work, we developed a mpMRI protocol for STS, including established functional and structural imaging, that was acceptable for patients and that could be applied several times during

radiotherapy. The imaging protocol is deliverable as shown by the good patient compliance, and there are some interesting findings. To our knowledge no other study has reported the use of mpMRI in STS in neoadjuvant radiotherapy with a time point early in treatment..

We applied the techniques of DCE-MRI, DWI and T1 measurement to explore radiotherapy-related changes to tumour tissue not reflected by changes in size. As found in several previous publications,^{3,4,10} size change varied between tumours and was not related to any histological parameters measured at surgery. Since conventional RECIST criteria cannot be associated with radiotherapy response, a non-invasive imaging biomarker predictive of overall survival, local control⁷ and distant metastasis^{8,9} is desirable and could be used to stratify patients for treatment intensification or de-intensification. The tissue T1 decreased significantly between baseline and mid-treatment but by the end of radiotherapy the main variation in T1 was between patients. T1 changes can reflect a wide range of alterations in tissue structure²⁶ resulting in large variations in values between patients, which complicates interpretation of tumour revascularisation between baseline and early treatment. Tumours with positive staining for CAIX had a significantly shorter T1 at all three visits, consistent with the expected T1 shortening effect of deoxyhaemoglobin. ADC increased significantly between baseline and post-treatment, as shown in previous work²⁷ and is hypothesised to reflect decreased cellularity and increased necrosis.²⁸ Pre-treatment ADC values were similar to those reported in previous studies^{27,28} though, as noted by other authors, the range of baseline values was large.

There was an inverse correlation between $iAUC_{60}$ and hypoxia score. $iAUC_{60}$ is a semi-quantitative parameter with no direct physiological interpretation. A source of the negative correlation observed both at baseline and early in treatment could be poor tumour perfusion resulting in a lower $iAUC_{60}$ and the post-treatment hypoxia observed. This is consistent with previous work in a mouse xenograft model, which showed reduced AUC in hypoxic tumour regions defined by pimonidazole staining.²⁹ At baseline, tumours with positive staining for post-treatment CAIX had significantly higher $iAUC_{60}$, which is not consistent with the expected relationship between $iAUC_{60}$, perfusion and oxygenation. The inverse correlation between mid-treatment ADC and Ki67 at resection suggests that tumours with a good initial response to radiotherapy (lower cell density, higher ADC) subsequently have less proliferation at resection. The relationship between ADC and Ki67 has been explored previously, and reported in a meta-analysis that confirmed this negative correlation in many tumour types.³⁰ Similarly, tumours that show no staining for CAIX at resection (normoxic at surgery) have a significantly higher ADC early in treatment (lower cell density). In a previous study in melanoma xenografts, ADC was shown to be inversely related to hypoxic fraction determined by pimonidazole staining.³¹ The relationship between CAIX and ADC has been explored previously but no relationship was found,³² possibly because CAIX is a downstream marker of hypoxia which can be regulated by other factors whereas pimonidazole represents a more direct measure. Correlation between pre-treatment ADC and hypoxia score is more difficult to interpret as ADC is measured long before the resection of the tumour.

This study has several limitations. The number of patients was small, prohibiting examination of differences between responders

and non-responders. The results should be interpreted with caution due to sample size and differences in measurement timepoint, but the main aim of the study was to develop a suitable imaging protocol for which this small number is likely to be sufficient. The DCE-MRI data were acquired with sufficient temporal resolution to support tracer kinetics modelling, but the varying tumour locations made measurement of an arterial input function extremely challenging. We therefore opted to use a semi-quantitative parameter instead, but modelling could perhaps have given further insight.¹⁷ Future work could include modelling, if suitable spatial resolution can be obtained, and an MR-linac could allow more detailed monitoring during treatment.³³

Overall, this work has resulted in a feasible imaging protocol aligning with domain I of the imaging biomarker road map. We identified significant changes in T1 and ADC during treatment. As $iAUC$ relates to hypoxia, an established adverse prognostic factor in STS,³⁴ it may be suitable as a non-invasive biomarker of tumour microenvironment and should be explored in a larger study.

ACKNOWLEDGEMENT

We acknowledge the help of Sarah Welby, radiographers at The Christie NHSFT and Prof Catharine West.

CONFLICTS OF INTEREST AND FUNDING STATEMENT

The authors have no conflicts of interest to declare. Professor Ananya Choudhury is supported by the NIHR Manchester Biomedical Research Centre. This research was supported by CTRad.

REFERENCES

- National Cancer Intelligence Network Bone and Soft Tissue Sarcomas UK Incidence and Survival : 1996 to 2010. *Natl Cancer Intelligence Netw* 2013; **2013**: 17.
- Coindre JM, Terrier P, Guillou L, et al. Predictive value of grade for metastasis development in the main histologic types of adult soft tissue sarcomas: a study of 1240 patients from the French Federation of cancer centers sarcoma group. *Cancer* **2001**(; 2–310):1914–1926.10.1002/1097-0142(20010515)91:10<1914::AID-CNCR1214>3.0.CO.
- Roberge D, Skamene T, Nahal A, Turcotte RE, Powell T, Freeman C. Radiological and pathological response following pre-operative radiotherapy for soft-tissue sarcoma. *Radiotherapy and Oncology* 2010; **97**: 404–7. doi: <https://doi.org/10.1016/j.radonc.2010.10.007>
- le Grange F, Cassoni AM, Seddon BM. Tumour volume changes following pre-operative radiotherapy in borderline resectable limb and trunk soft tissue sarcoma. *European Journal of Surgical Oncology* 2014; **40**: 394–401. doi: <https://doi.org/10.1016/j.ejso.2014.01.011>
- Dangoor A, Seddon B, Gerrand C, Grimer R, Whelan J, Judson I. Uk guidelines for the management of soft tissue sarcomas. *Clin Sarcoma Res* 2016; **6**: 20. doi: <https://doi.org/10.1186/s13569-016-0060-4>
- DAVIS A, OSULLIVAN B, TURCOTTE R, BELL R, CATTON C, CHABOT P, et al. Late radiation morbidity following randomization to preoperative versus postoperative radiotherapy in extremity soft tissue sarcoma. *Radiotherapy and Oncology* 2005; **75**: 48–53. doi: <https://doi.org/10.1016/j.radonc.2004.12.020>
- Eilber FC, Rosen G, Eckardt J, Forscher C, Nelson SD, Selch M, et al. Treatment-Induced pathologic necrosis: a predictor of local recurrence and survival in patients receiving neoadjuvant therapy for high-grade extremity soft tissue sarcomas. *JCO* . 2001; **19**: 3203–9Bönig H, ed. J. doi: <https://doi.org/10.1200/JCO.2001.19.13.3203>
- Shah D, Borys D, Martinez SR, et al. Complete pathologic response to neoadjuvant radiotherapy is predictive of oncological outcome in patients with soft tissue sarcoma. *Anticancer Res* 2012; **32**: 3911–5.
- MacDermed DM, Miller LL, Peabody TD, Simon MA, Luu HH, Haydon RC, et al. Primary tumor necrosis predicts distant control in locally advanced soft-tissue sarcomas after preoperative concurrent chemoradiotherapy. . *Int J Radiat Oncol Biol Phys* 2010; **76**: 1147–53Bönig H, ed. doi: <https://doi.org/10.1016/j.ijrobp.2009.03.015>
- Miki Y, Ngan S, Clark JCM, Akiyama T, Choong PFM. The significance of size change of soft tissue sarcoma during preoperative radiotherapy. *European Journal of Surgical*

- Oncology* 2010; **36**: 678–83. doi: <https://doi.org/10.1016/j.ejso.2010.05.021>
11. Pasquier D, Hadj Henni A, Escande A, Tresch E, Reynaert N, Colot O, et al. Diffusion weighted MRI as an early predictor of tumor response to hypofractionated stereotactic boost for prostate cancer. *Sci Rep* 2018; **8**: 10407. doi: <https://doi.org/10.1038/s41598-018-28817-9>
 12. Pham TT, Liney GP, Wong K, Barton MB. Functional MRI for quantitative treatment response prediction in locally advanced rectal cancer. *Br J Radiol* 2017; **90**: 20151078. doi: <https://doi.org/10.1259/bjr.20151078>
 13. Suh CH, Kim HS, Jung SC, Choi CG, Kim SJ. Multiparametric MRI as a potential surrogate endpoint for decision-making in early treatment response following concurrent chemoradiotherapy in patients with newly diagnosed glioblastoma: a systematic review and meta-analysis. *Eur Radiol* 2018; **28**: 2628–38. doi: <https://doi.org/10.1007/s00330-017-5262-5>
 14. Chung PWM, Dehesi BM, Ferguson PC, et al. Radiosensitivity translates into excellent local control in extremity myxoid liposarcoma: a comparison with other soft tissue sarcomas. *Cancer* 2009; **115**: 3254–61.
 15. Soldatos T, Ahlwat S, Montgomery E, Chalian M, Jacobs MA, Fayad LM. Multiparametric assessment of treatment response in high-grade soft-tissue sarcomas with anatomic and functional MR imaging sequences. *Radiology* 2016; **278**: 831–40. doi: <https://doi.org/10.1148/radiol.2015142463>
 16. Meyer JM, Perlewitz KS, Hayden JB, Doung Y-C, Hung AY, Vetto JT, et al. Phase I trial of preoperative chemoradiation plus sorafenib for high-risk extremity soft tissue sarcomas with dynamic contrast-enhanced MRI correlates. *Clin Cancer Res* 2013; **19**: 6902–11. doi: <https://doi.org/10.1158/1078-0432.CCR-13-1594>
 17. Xia W, Yan Z, Gao X. Volume fractions of DCE-MRI parameter as early predictor of histologic response in soft tissue sarcoma: a feasibility study. *Eur J Radiol* 2017; **95**(July): 228–35. doi: <https://doi.org/10.1016/j.ejrad.2017.08.021>
 18. Schnapauff D, Zeile M, Niederhagen MB, Fleige B, Tunn P-U, Hamm B, Ben NM, et al. Diffusion-Weighted echo-planar magnetic resonance imaging for the assessment of tumor cellularity in patients with soft-tissue sarcomas. *J Magn. Reson. Imaging* 2009; **29**: 1355–9. doi: <https://doi.org/10.1002/jmri.21755>
 19. O'Connor JPB, Aboagye EO, Adams JE, Aerts HJWL, Barrington SF, Beer AJ, et al. Imaging biomarker roadmap for cancer studies. *Nat Rev Clin Oncol* 2017; **14**: 169–86. doi: <https://doi.org/10.1038/nrclinonc.2016.162>
 20. Maeda-Otsuka S, Kajihara I, Tasaki Y, et al. Hypoxia accelerates the progression of angiosarcoma through the regulation of angiosarcoma cells and tumor microenvironment. *J Dermatol Sci* 2019;.
 21. Forker L, Gaunt P, Sioletic S, et al. The hypoxia marker CAIX is prognostic in the UK phase III Vortex-Biobank cohort: an important resource for translational research in soft tissue sarcoma. *Br J Cancer* 2018;.
 22. Larsson HBW, Rosenbaum S, Fritz-Hansen T. Quantification of the effect of water exchange in dynamic contrast MRI perfusion measurements in the brain and heart. *Magn Reson Med* 2001; **46**: 272–81. doi: <https://doi.org/10.1002/mrm.1188>
 23. Brookes JA, Redpath TW, Gilbert FJ, Murray AD, Staff RT. Accuracy of T1 measurement in dynamic contrast-enhanced breast MRI using two- and three-dimensional variable FLIP angle fast low-angle shot. *J Magn. Reson. Imaging* 1999; **9**: 163–71. doi: [https://doi.org/10.1002/\(SICI\)1522-2586\(199902\)9:2<163::AID-JMRI3>3.0.CO;2-L](https://doi.org/10.1002/(SICI)1522-2586(199902)9:2<163::AID-JMRI3>3.0.CO;2-L)
 24. Yang L, Forker L, Irlam JJ, Pillay N, Choudhury A, West CML. Validation of a hypoxia related gene signature in multiple soft tissue sarcoma cohorts. *Oncotarget* 2018; **9**: 3946–55. doi: <https://doi.org/10.18632/oncotarget.23280>
 25. Betts GNJ, Eustace A, Patiar S, Valentine HR, Irlam J, Ramchandran A, et al. Prospective technical validation and assessment of intra-tumour heterogeneity of a low density array hypoxia gene profile in head and neck squamous cell carcinoma. *Eur J Cancer* 2013; **49**: 156–65. doi: <https://doi.org/10.1016/j.ejca.2012.07.028>
 26. McRobbie DW, Moore EA, Graves MJ, Prince MR. *MRI from Picture to Proton*. Cambridge: CUP; 2003.
 27. Einarsdóttir H, Karlsson M, Wejde J, Bauer HCF. Diffusion-Weighted MRI of soft tissue tumours. *Eur Radiol* 2004; **14**: 959–63. doi: <https://doi.org/10.1007/s00330-004-2237-0>
 28. Dudeck O, Zeile M, Pink D, Pech M, Tunn P-U, Reichardt P, et al. Diffusion-Weighted magnetic resonance imaging allows monitoring of anticancer treatment effects in patients with soft-tissue sarcomas. *J Magn. Reson. Imaging* 2008; **27**: 1109–13. doi: <https://doi.org/10.1002/jmri.21358>
 29. Jardim-Perassi BV, Huang S, Dominguez-Viqueira W, Poleszczuk J, Budzevich MM, Abdalah MA, et al. Multiparametric MRI and coregistered histology identify tumor habitats in breast cancer mouse models. *Cancer Res* 2019; **79**: 3952–64. doi: <https://doi.org/10.1158/0008-5472.CAN-19-0213>
 30. Surov A, Meyer HJ, Wienke A. Associations between apparent diffusion coefficient (ADC) and Ki 67 in different tumors: a meta-analysis. Part 2: ADCmin. *Oncotarget* 2018; **9**: 8675–80. doi: <https://doi.org/10.18632/oncotarget.24006>
 31. Hompland T, Ellingsen C, Galappathi K, Rofstad EK. DW-MRI in assessment of the hypoxic fraction, interstitial fluid pressure, and metastatic propensity of melanoma xenografts. *BMC Cancer* 2014; **14**: 1–9. doi: <https://doi.org/10.1186/1471-2407-14-92>
 32. Rasmussen JH, Olin A, Lelkaitis G, Hansen AE, Andersen FL, Johannesen HH, et al. Does multiparametric imaging with 18F-FDG-PET/MRI capture spatial variation in immunohistochemical cancer biomarkers in head and neck squamous cell carcinoma? *Br J Cancer* 2020; **123**: 46–53. doi: <https://doi.org/10.1038/s41416-020-0876-9>
 33. Kerkmeijer LGW, Fuller CD, Verkooijen HM, Verheij M, Choudhury A, Harrington KJ, et al. The MRI-Linear accelerator Consortium: evidence-based clinical introduction of an innovation in radiation oncology connecting researchers, methodology, data collection, quality assurance, and technical development. *Front Oncol* 2016; **6**(October): 1–6. doi: <https://doi.org/10.3389/fonc.2016.00215>
 34. Nordmark M, Alsner J, Keller J, Nielsen OS, Jensen OM, Horsman MR, et al. Hypoxia in human soft tissue sarcomas: adverse impact on survival and no association with p53 mutations. *Br J Cancer* 2001; **84**: 1070–5. doi: <https://doi.org/10.1054/bjoc.2001.1728>