



THE UNIVERSITY *of* EDINBURGH

Edinburgh Research Explorer

A Window in the Brain

Citation for published version:

Abdullateef, S, Jordan, B, McLellan, A, Nenadovic, V, Escudero, J & Lo, M 2022, A Window in the Brain: Applying data science to quantitatively detect seizures with minimal-density EEG montage. in *14th European Paediatric Neurology Society Congress.*, EPNS21-406, 14th European Paediatric Neurology Society Congress, Glasgow, United Kingdom, 28/04/22.

Link:

[Link to publication record in Edinburgh Research Explorer](#)

Document Version:

Publisher's PDF, also known as Version of record

Published In:

14th European Paediatric Neurology Society Congress

General rights

Copyright for the publications made accessible via the Edinburgh Research Explorer is retained by the author(s) and / or other copyright owners and it is a condition of accessing these publications that users recognise and abide by the legal requirements associated with these rights.

Take down policy

The University of Edinburgh has made every reasonable effort to ensure that Edinburgh Research Explorer content complies with UK legislation. If you believe that the public display of this file breaches copyright please contact openaccess@ed.ac.uk providing details, and we will remove access to the work immediately and investigate your claim.

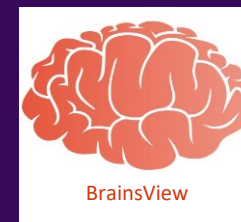




A Window in the Brain: Applying data science to quantitatively detect seizures with minimal-density EEG montage

Shima Abdullateef¹, Brian Jordan², Ailsa McLellan², Vera Nenadovic³, Javier Escudero¹, Tsz-Yan Lo^{2,4}

¹School of Engineering, IDCOM, University of Edinburgh (Edinburgh), ²Royal Hospital for Children & Young Person (Edinburgh), ³BrainsView (Ontario), ⁴Usher Institute, University of Edinburgh, NINE BioQuarter (Edinburgh)



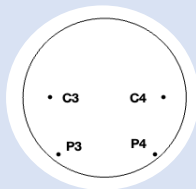
TAKE-HOME MESSAGE

Epileptic seizures can be detected with as few as **four** EEG channels with **above 70 %** accuracy.



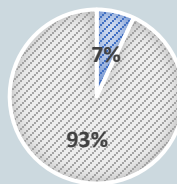
1. BACKGROUND

- Up to 74% of seizure in PCCU do not have clear clinical marker.
- Gold-standard seizure detection using multi-channels EEG needs:
 - Highly specialised neurologist
 - Trained clinical physiologists
 - Round-the clock service
- PCCU team can reliably apply a 4-channels montage shown here.

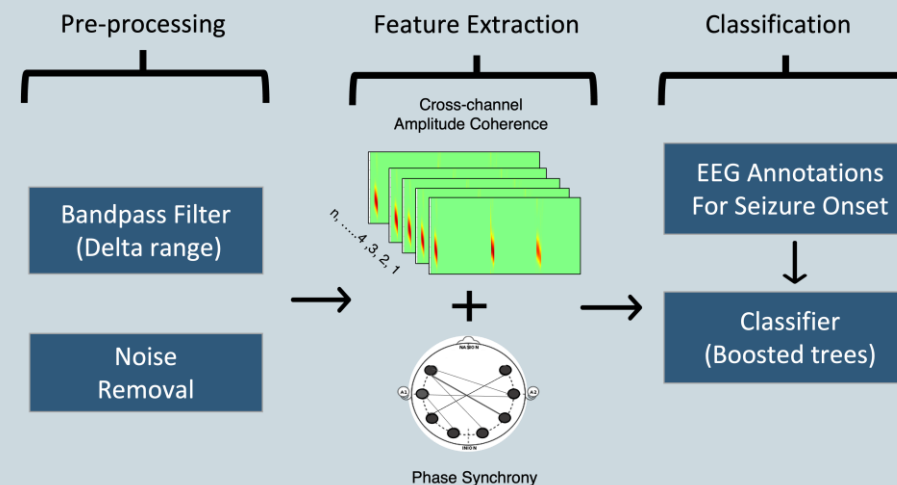


2. METHODS

- Forty fully anonymised routinely collected EEG provided by the Royal Hospital for Children and Young People
 - Age range: 1 -12 years old
 - Total duration: 38.5
 - No. Seizures: 236



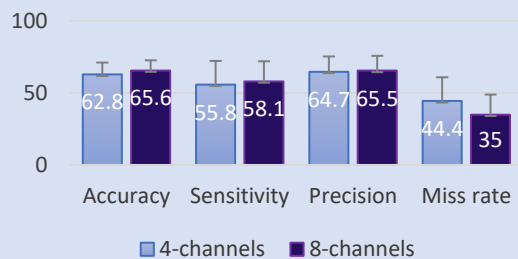
■ Seizure Onset Duration ■ Background EEG



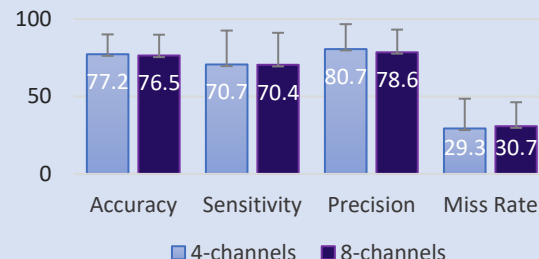
3. RESULTS

- Both features capture the number of connections between the pairs of channels.
- Using two features improved the accuracy for both 8 and 4-channels seizure detection.

Seizure detection using Phase Synchrony only



Seizure detection using phase Synchrony and Coherence



5. FUTURE WORK

- Multi -centre** recruitment of data
- Improving the accuracy** and reducing the miss-rate
- Developing a user-friendly and **accurate seizure detection tool for frontline clinicals**