



THE UNIVERSITY *of* EDINBURGH

## Edinburgh Research Explorer

### **Erratum: Transcriptomes of parents identify parenting strategies and sexual conflict in a subsocial beetle (Nature Communications (2015) 6(8449) 10.1038/ncomms9449)**

**Citation for published version:**

Parker, DJ, Cunningham, CB, Walling, CA, Stamper, CE, Head, ML, Roy-Zokan, EM, McKinney, EC, Ritchie, MG & Moore, AJ 2016, 'Erratum: Transcriptomes of parents identify parenting strategies and sexual conflict in a subsocial beetle (Nature Communications (2015) 6(8449) 10.1038/ncomms9449)', *Nature Communications*, vol. 7, 11737. <https://doi.org/10.1038/ncomms11737>

**Digital Object Identifier (DOI):**

[10.1038/ncomms11737](https://doi.org/10.1038/ncomms11737)

**Link:**

[Link to publication record in Edinburgh Research Explorer](#)

**Document Version:**

Publisher's PDF, also known as Version of record

**Published In:**

Nature Communications

**Publisher Rights Statement:**

This work is licensed under a Creative Commons Attribution 4.0 International License. The images or other third party material in this article are included in the article's Creative Commons license, unless indicated otherwise in the credit line; if the material is not included under the Creative Commons license, users will need to obtain permission from the license holder to reproduce the material. To view a copy of this license, visit <http://creativecommons.org/licenses/by/4.0/>

**General rights**

Copyright for the publications made accessible via the Edinburgh Research Explorer is retained by the author(s) and / or other copyright owners and it is a condition of accessing these publications that users recognise and abide by the legal requirements associated with these rights.

**Take down policy**

The University of Edinburgh has made every reasonable effort to ensure that Edinburgh Research Explorer content complies with UK legislation. If you believe that the public display of this file breaches copyright please contact [openaccess@ed.ac.uk](mailto:openaccess@ed.ac.uk) providing details, and we will remove access to the work immediately and investigate your claim.

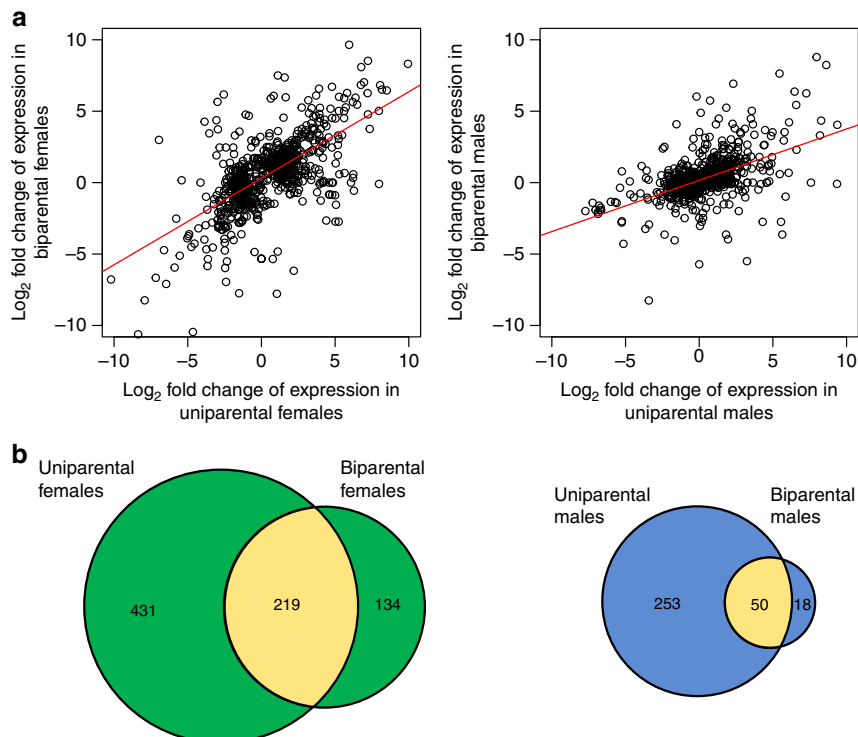


# Erratum: Transcriptomes of parents identify parenting strategies and sexual conflict in a subsocial beetle

Darren J. Parker, Christopher B. Cunningham, Craig A. Walling, Clare E. Stamper, Megan L. Head, Eileen M. Roy-Zokan, Elizabeth C. McKinney, Michael G. Ritchie & Allen J. Moore

*Nature Communications* 6:8449 doi: 10.1038/ncomms9449 (2015); Published 29 Sep 2015; Updated 27 May 2016

In the Methods section of this Article, a detail of the analysis involved in producing Fig. 4 and Table 2 was omitted. The section ‘Mapping and detection of differential expression’ should state that the overall magnitude of gene expression change was examined, ignoring the direction (up or downregulation). There are also errors in the labelling of axes in Fig. 6a. The *y* axis of the graph on the left should have read ‘Log<sub>2</sub>-fold change of expression in biparental females’ and the *x* axis of the graph on the right should have read ‘Log<sub>2</sub>-fold change of expression in uniparental males’. The correct version of Fig. 6 appears below.



**Figure 6**

This work is licensed under a Creative Commons Attribution 4.0 International License. The images or other third party material in this article are included in the article’s Creative Commons license, unless indicated otherwise in the credit line; if the material is not included under the Creative Commons license, users will need to obtain permission from the license holder to reproduce the material. To view a copy of this license, visit <http://creativecommons.org/licenses/by/4.0/>