



THE UNIVERSITY *of* EDINBURGH

Edinburgh Research Explorer

Participatory design of eHealth solutions for women from vulnerable populations with perinatal depression

Citation for published version:

The SPIRIT Group, Gordon, M, Henderson, R, Holmes, JH, Wolters, MK & Bennett, I 2016, 'Participatory design of eHealth solutions for women from vulnerable populations with perinatal depression', *JAMIA: A Scholarly Journal of Informatics in Health and Biomedicine (JAMIA)*, vol. 23, no. 1, pp. 105-109.
<https://doi.org/10.1093/jamia/ocv109>

Digital Object Identifier (DOI):

[10.1093/jamia/ocv109](https://doi.org/10.1093/jamia/ocv109)

Link:

[Link to publication record in Edinburgh Research Explorer](#)

Document Version:

Peer reviewed version

Published In:

JAMIA: A Scholarly Journal of Informatics in Health and Biomedicine (JAMIA)

General rights

Copyright for the publications made accessible via the Edinburgh Research Explorer is retained by the author(s) and / or other copyright owners and it is a condition of accessing these publications that users recognise and abide by the legal requirements associated with these rights.

Take down policy

The University of Edinburgh has made every reasonable effort to ensure that Edinburgh Research Explorer content complies with UK legislation. If you believe that the public display of this file breaches copyright please contact openaccess@ed.ac.uk providing details, and we will remove access to the work immediately and investigate your claim.



OXFORD
UNIVERSITY PRESS

JAMIA: Journal of the
American Medical Informatics Association

**Participatory design of eHealth solutions for women from
vulnerable populations with perinatal depression**

Journal:	<i>Journal of the American Medical Informatics Association</i>
Manuscript ID:	amiajnl-2015-003768.R1
Article Type:	Brief Communication
Keywords:	Patient Decision Aid, Participatory Design, Depression, Pregnancy, Low literacy, Vulnerable population

SCHOLARONE™
Manuscripts

1
2
3 Revised manuscript in response to: JAMIA Call for Papers

4
5 Special Issue on Interactive Systems for Patient-Centered Care to Enhance Patient Engagement

6
7 Title: Participatory design of eHealth solutions for women from vulnerable populations with
8
9 perinatal depression
10
11

12
13
14
15 Authors: Mara Gordon MD, Rebecca Henderson, John H. Holmes PhD, Maria Wolters Dr Phil,
16
17 Ian Bennett MD PhD, and the SPIRIT (Stress in Pregnancy: Improving Results with Interactive
18
19 Technology) Group
20
21

22
23
24 Department of Family Medicine and Community Health, University of Pennsylvania
25

26
27 Communicating author address:
28

29 Ian Bennett MD PhD
30

31 Department of Family Medicine and Community Health
32

33 Perelman School of Medicine
34

35
36 2nd Floor Gates Pavilion
37

38 Hospital of the University of Pennsylvania
39

40
41 3400 Spruce Street
42

43 Philadelphia, PA 19104
44

45
46 Word Count
47

48 Abstract: 150
49

50 Text: 2028
51

52
53 Key words: Patient decision aid, participatory design, depression, pregnancy, low socioeconomic
54
55 status
56
57
58
59
60

1
2
3
4
5
6
7 ABSTRACT

8
9 *Objective:* Cultural and health service obstacles affect the quality of pregnancy care that women
10 from vulnerable populations receive. Using a participatory design approach, the SPIRIT group
11 developed specifications for a suite of eHealth applications to improve quality of perinatal
12 mental health care.
13
14

15
16
17
18 *Materials and Methods:* We established a longitudinal participatory design group consisting of
19 low-income women with a history of antenatal depression, their prenatal providers, mental health
20 specialists, an app developer, and researchers. The group met 20 times over 24 months.
21
22
23 Applications were designed using rapid prototyping. Meetings were documented using field
24 notes.
25
26
27
28

29
30 *Results and Discussion:* The group achieved high levels of continuity and engagement. Three
31 apps were developed by the group: an app to support high-risk women after discharge from
32 hospital, a screening tool for depression, and a patient decision aid for supporting treatment
33 choice.
34
35
36
37
38

39
40 *Conclusion:* Longitudinal participatory design groups are a promising, highly feasible approach
41 to developing technology for underserved populations
42
43
44
45
46
47
48
49
50
51
52
53
54
55
56
57
58
59
60

BACKGROUND

Disorders of mental health are the leading cause of disability globally¹ and remain under-diagnosed and under-treated.² Common mental disorders during pregnancy and the year postpartum (perinatal mental disorders PMD; most often depression and anxiety) affect 14-23% of women overall and as many as 50% of those with low income. They increase the risk of both poor maternal and pediatric outcomes.^{3,4} Low-income women and those from minority ethnic groups are simultaneously at greater risk for PMD, and less likely to receive care for these disorders.^{5,6} These women face a range of both patient and health services related obstacles to care.⁷

The use of patient centered eHealth strategies that accommodate end user needs holds promise to overcome a range of care obstacles for this vulnerable population.⁸ Participatory methodologies are used to improve the patient-centeredness of various interventions.⁹ Provider engagement with patients is especially valuable when designing computer-based interventions for vulnerable populations.¹⁰ This can help promote bilateral exchange of knowledge, help address bias and disparities in the development of new interventions, and identify and address obstacles and opportunities among patients and their providers.¹¹⁻¹³

In this paper, we describe an iterative participatory design strategy that resulted in a suite of three eHealth tools geared to the particular support needs of low-income, ethnic/racial minority women at risk for PMD. We briefly discuss the apps that were developed and end with recommendations for using this approach.

METHODS

We initiated a participatory design group in January 2013 to address issues surrounding depression in pregnancy called SPIRIT (Stress in Pregnancy: Improving Results with Interactive

1
2
3 Technology). The work of this group was approved by the IRB of the University of Pennsylvania
4 and focused on the needs of low-income and ethnic minority women in the urban Philadelphia
5
6 area.
7
8

9
10 *Setting and Participants:*
11

12 The SPIRIT group met monthly at a large hospital-based outpatient prenatal care center
13 for low income Medicaid-insured women in Philadelphia, PA, USA. The group was comprised
14 of members of the two key stakeholder groups – women with history of depression in pregnancy
15 and their prenatal providers (nurse practitioners, physicians, social workers, care facilitators,
16 psychologists and psychiatrists) – as well as center administrators, mental health services
17 researchers, and an application developer (programmer). The center is part of the University of
18 Pennsylvania Health System and cares for approximately 4,000 pregnant women annually. More
19 than 90% of the patients seen are US born African-Americans with a high rate of low literacy.¹⁴
20 An initial information session for all frontline clinical, administrative, and support staff was
21 carried out to recruit staff members. This included obstetrics/gynecology physicians, nurse
22 practitioners, nurses, medical assistants, front desk staff, and mental health providers. The
23 session was announced at a staff meeting and through flyers. Key members of the staff seen as
24 potential champions of the project because of interest in perinatal depression were approached in
25 person.
26
27
28
29
30
31
32
33
34
35
36
37
38
39
40
41
42
43
44

45 Clinicians from the SPIRIT group were asked to identify potential patient members from
46 their own patient panels with a history of perinatal depression and potential interest in
47 participating. Providers invited their patients to come to a SPIRIT meeting to learn about the
48 group.
49
50
51
52
53

54
55 Process:
56
57
58
59
60

1
2
3
4
5
6
7
8
9
10
11
12
13
14
15
16
17
18
19
20
21
22
23
24
25
26
27
28
29
30
31
32
33
34
35
36
37
38
39
40
41
42
43
44
45
46
47
48
49
50
51
52
53
54
55
56
57
58
59
60

Participatory design meetings occurred monthly in a waiting area of the prenatal center and lasted two hours immediately following the regular work day. Between January and June 2013 participants were compensated with \$25 for their time. Patients joined the group in March of 2013. From July 2013 onwards, compensation was increased to \$50 due to increased funding for the project. Participants were also provided with a simple dinner. The group collectively wrote a mission statement, which included the objective of improving communication and healthy outcomes in women with emotional distress using easily accessible interactive technology.

SPIRIT group meetings focused on generating ideas and providing feedback on brief pilot studies implemented by providers, clinical administrative staff, health information technology developers, and video producers. Meetings were facilitated by the research team and involved brainstorming, problem-solving, role playing, and feedback on content. Role playing to review impact of the applications on clinical work flow was particularly effective; members of the group were able to observe proposed work flows and provide immediate responses and suggestions for modifications which could then be discussed for issues such as technical feasibility. Patient participants were critical to identifying favored language, features, and stylistic elements of the “look” of the app that were appropriate to the target population. Input on readability and literacy challenges with language used in the app were particularly targeted by these members of the group. The SPIRIT group took a rapid cycle iterative design approach.¹¹ At each meeting, the SPIRIT group reviewed progress, provided feedback, tested available pilot software, and formulated specific recommendations for immediate next steps. The tools were then revised for the next meeting. Some examples of changes implemented as a result of this process are shown in Table 1.

1
2
3 The health care researchers supported the SPIRIT group by organizing and managing the
4 meetings and reviewing literature to gather relevant evidence and content for each of the
5 proposed applications. The researchers also drafted scripts and specifications informed by such
6 considerations as readability and the high rate of limited literacy in the target population.¹⁴
7
8 Following lean design principles, the programmer and developer members of the design group
9 were less involved initially until a satisfactory specification was established – after which they
10 developed and presented working prototypes.¹¹
11
12
13
14
15
16
17
18
19

20 Live action videography was carried out on location. Animated “guides” were produced
21 using a commercial software product (Moviestorm, UK). Sound for the animation was taken
22 from the live action video.
23
24
25
26

27 RESULTS

28
29 Over the course of 24 months, from January 2013 through December 2014, the SPIRIT
30 participatory design team developed three applications: the MyGamePlan suicide prevention
31 mobile app for iPhone, a tablet based screening tool for PMD, and a patient decision aid (PtDA)
32 for supporting treatment decisions for depression in pregnancy by women and their clinicians.
33
34 The SPIRIT group consisted of a core group of participants (n=17) including patients with
35 history of depression in pregnancy (n=4), prenatal providers (n=2), social workers/care managers
36 (n=2), mental health specialists (n=2), a clinic administrator (n=1), support staff (n=3), research
37 staff (n=2) and a programmer (n=1). Average attendance was 13 (range 5-22). Of the initial 17
38 SPIRIT members 12 continued for the full development period (71%) while the remaining
39 membership had turnover.
40
41
42
43
44
45
46
47
48
49
50

51 *My Game Plan:*
52
53
54
55
56
57
58
59
60

1
2
3 The SPIRIT group developed a downloadable suicide prevention smartphone application
4 for iPhone called MyGamePlan. This application was designed for use by patients discharged
5 from an inpatient hospitalization for suicide risk. MyGamePlan includes a set of functionalities
6 to support the transition following hospitalization including: 1) scheduling and reminder features
7 for follow up, 2) standard safety plan support, 3) and connections to local resources which take
8 advantage of geo-location capabilities of the mobile device. The design team was expanded for
9 this application to temporarily include: 1) a discharge planning clinical social worker at an
10 inpatient psychiatric center within the same health system, and 2) the parent of a suicide victim
11 with strong interest in advocacy for discharge support.
12
13
14
15
16
17
18
19
20
21
22
23

24 *Depression screening tool:*

25
26
27 The SPIRIT group developed a tablet-based self-report screening tool for risk of PMD
28 using a validated 2-stage process with an initial 2-question screen followed by the PHQ-9.¹⁵⁻¹⁷
29 The screening tool was designed to allow implementation of efficient universal screening for
30 these conditions. The design process included fitting within existing work flow. A series of role
31 plays were used to work out this process; each step of the screening through risk identification
32 and response by the members of the staff (support staff, prenatal providers, and mental health
33 specialists) was reviewed during SPIRIT meetings with immediate feedback by team members
34 and corrections to design. The final process involved initial identification of eligible patients
35 (following standard recommendations three times over the course of pregnancy and postpartum)
36 during appointment check in. Patient responses are linked to a patient's unique office visit using
37 a visit bar code generated by scheduling software used in the center. Patients take the tablet
38 computer to their seats to complete in privacy before seeing a clinician. The screening includes
39 validated strategies designed to reduce the burden and increases the efficiency of the process.¹⁵ A
40
41
42
43
44
45
46
47
48
49
50
51
52
53
54
55
56
57
58
59
60

1
2
3 provisional diagnosis based on these answers is provided for use by clinicians.^{16,17} These results
4
5 are immediately transmitted wirelessly through a secure hospital wifi network to the electronic
6
7 health record accessible to health care providers for use in that visit. Patients with current self
8
9 harm risk are flagged for immediate assessment of risk severity.
10
11

12
13 *TIPS (Technology to Improve Patient Services) tablet-based patient decision aid (PtDA):*
14

15 The most ambitious of the apps developed by SPIRIT was a patient decision aid (PtDA)
16
17 to help women with perinatal depression learn about and discuss different treatment modalities
18
19 with their providers.¹⁸ Patient and provider education about available choices is critical to
20
21 engagement and monitoring of women at risk for PMD, where choices are strongly influenced by
22
23 patient preference. The group's design work was guided by the Ottawa Decision Support
24
25 Framework and International Patient Decision Aids Standards (IPDAS; Figure 1): 1) assess
26
27 client and practitioner determinants of decisions to identify decision support needs, 2) provide
28
29 decision support tailored to client needs, and 3) evaluate the decision making process and
30
31 outcomes.^{18,19} The group identified a set of key features for the electronic PtDA (Table 2).
32
33 Guiding design principles included accommodating patient preferences, clinical usefulness,
34
35 cultural appropriateness, and accessibility to women with low-literacy.¹⁹ The group went on to
36
37 evaluate depression treatment options for inclusion in the decision aid. Four criteria were
38
39 identified by the group and used to select and describe treatment options: evidence of benefit,
40
41 evidence of harm, and ease of use, and availability to the patient population. The final set of
42
43 treatments are listed in Table 3.
44
45
46
47
48

49
50 *PtDA functionalities:*
51
52

53 TIPS is a mobile tablet-based application developed for patient use in the waiting room.
54
55 Some examples of the role that the SPIRIT group had in the design of this application are shown
56
57
58
59
60

1
2
3 in Table 3. The SPIRIT group selected a tablet as the medium for the PtDA for: 1) ease of use in
4 the waiting room before appointments, 2) patient familiarity with mobile devices, and 3) ability
5 to integrate audio and visual components for low-literacy users. A personified interface “guide”
6 approach was chosen; both a live actor and an animated guide were used to enhance engagement
7 with the application process (see Figure 2). SPIRIT group members felt that the animated option
8 provided an alternative that would be appealing to a substantial portion of users. The actual
9 utilization and preferences of these options will be formally assessed in future evaluation work.

10
11
12
13
14
15
16
17
18
19
20 The final design of the TIPS app is shown in Figure 3. Patients screening positive for risk
21 of depression are directed to the PtDA. An introductory video allows navigator selection.

22
23
24 Patients are then taken through a series of content and question sections including:

25
26
27 psychoeducation introducing patients to depression in pregnancy, and 2) values clarification in
28 which users review preferences regarding features of potential treatments such as safety and
29 efficacy in the context of pregnancy. Results of the depression screening sections determine
30 initial treatment recommendations for patients based on treatment guidelines.²⁰ The algorithm
31 used to generate this list incorporates severity of depression symptoms, and the presence of
32 thoughts of self harm. All nine of the treatments are available as icons on the screen of the tablet.
33
34
35
36
37
38
39
40
41
42 The navigator describes each treatment, the evidence of benefit and harm, and ease of use.

43
44
45
46
47
48
49
50
51
52
53
54
55
56
57
58
59
60
A patient ultimately selects specific treatment preferences that she wishes to discuss with
her prenatal care providers. This information is summarized along with screening results and the
values clarification summary for the patient (in paper form) as well as her prenatal provider
(electronically through the electronic medical record). Prenatal providers are given additional
brief clinical decision support so that they are prepared to discuss and initiate a plan.

1
2
3 In order to balance the need for rapid viewing of videos and potential need for updates of
4 content the TIPS PtDA utilizes a hybrid app design with a web based element but with pre-
5 loaded videos on the tablet devices for viewing. Content will be updated based on new findings
6 as part of the management of the app.
7
8
9
10
11

12 CONCLUSIONS AND RECOMMENDATIONS

13
14
15 Multi stakeholder participatory design groups are an effective way of developing patient
16 centered, eHealth solutions for low income and racial/ethnic minority populations. Since such
17 groups take time to establish we recommend budgeting adequate time and resources to develop
18 applications. Champions from a range of stakeholder groups played a large role in successfully
19 establishing the group. By recruiting patients from the case load of providers already involved in
20 SPIRIT, we ensured that there already was established trust between end users and provider
21 stakeholders.
22
23
24
25
26
27
28
29
30
31
32
33
34
35
36
37
38
39
40
41
42
43
44
45
46
47
48
49
50
51
52
53
54
55
56
57
58
59
60

1
2
3 Funding Statement - This work was supported by the Agency for Healthcare Research and Quality
4 grant number 1 K18 HS022441-01 and the Penn Medicine Center for Innovations.
5
6

7 Competing Interests Statement - The authors have no competing interests to declare.
8

9 Contributorship Statement – All of the authors of this work have made substantial contributions
10 to the conception or design of the work; or the analysis, or interpretation of data for the work;
11 Drafting the work or revising it critically for important intellectual content; and final approval of
12 the version to be published. All authors are accountable for all aspects of the work in ensuring
13 that questions related to the accuracy or integrity of any part of the work are appropriately
14 investigated and resolved.
15
16
17

18 19 20 ACKNOWLEDGEMENTS

21
22 The authors prepared the current manuscript for the SPIRIT group. Ms. Gordon was supported
23 by a grant from the FOCUS Fellowship on Women’s Health of the Perelman School of Medicine
24 of the University of Pennsylvania.
25
26
27

28 29 30 References:

- 31
32 1. World Health Organization (2008). The Global Burden of Disease: 2004 update.
33 Geneva: WHO
34
35 2. Jiang HJ EA, N. J., Steiner C, Reyes C, and Bierman A. (2000). Care of Women in U.S.
36 Hospitals (Vol. 2). Rockville, MD: Agency for Healthcare Research and Quality.’
37
38 3. Chung TK, L. T., Yip AS, Chiu HF, Lee DT. (2001). Antepartum depressive
39 symptomatology is associated with adverse obstetric and neonatal outcomes.
40
41 *Psychosomatic Medicine*, 63(5), 830-834.
42
43 4. Gaynes, B., Gavin, N., Meltzer-Brody, S., Lohr, K., Swinson, T., Gartlehner, G., et al.
44 (2005). *Perinatal Depression: Prevalence, Screening Accuracy, and Screening*
45 *Outcomes: Summary*: Agency for Healthcare Research and Quality (US).
46
47
48
49
50
51
52
53
54
55
56
57
58
59
60

- 1
2
3 5. Chabrol H, Teissedre F, Saint-Jean M, Teisseyre N, Roge B, Mullet E. (2002). Prevention
4 and treatment of post-partum depression: a controlled randomized study on women at
5
6 and treatment of post-partum depression: a controlled randomized study on women at
7
8 risk. *Psychological Medicine*, 32(6), 1039-1047.
9
- 10 6. Cooper PJ, Murray L, Wilson A, Romaniuk H. (2003). Controlled trial of the short-
11 and long-term effect of psychological treatment of post-partum depression. *British*
12
13 *Journal of Psychiatry*, 182, 412-419.
14
- 15 7. Shakespeare, J., Blake, F., & Garcia, J. (2003). A qualitative study of the acceptability
16
17 of routine screening of postnatal women using the Edinburgh Postnatal Depression
18
19 Scale. *Br J Gen Pract*, 53(493), 614-619.
20
21
- 22 8. Agarwal S, Labrique A. Newborn Health on the Line The Potential mHealth
23
24 Applications. *Jama-Journal of the American Medical Association*. Jul 2014;312(3):229-
25
26 230.
27
28
- 29 9. Jones, L., & Wells, K. (2007). Strategies for academic and clinician engagement in
30
31 community-participatory partnered research. *Jama*, 297(4), 407-410.
32
33
- 34 10. Chang, B. L., Brown, S. B. S. S., Houston, T. K., Kreps, G. L., Kukafka, R., Safran, C., et
35
36 al. (2004). Bridging the digital divide: reaching vulnerable populations. *Journal of the*
37
38 *American Informatics Association*, 11(6), 448-457.
39
40
- 41 11. Bodker K KF, Simonsen J. *Participatory IT Design; Designing for Business and*
42
43 *Workplace Realities*. Cambridge, Massachusetts: The MIT Press; 2004.
44
45
- 46 12. van Bruinessen IR, van Weel-Baumgarten EM, Snippe HW, Gouw H, Zijlstra JM, van
47
48 Dulmen S. Active Patient Participation in the Development of an Online Intervention.
49
50 *Journal of Medical Internet Research*. Nov 2014;16(11).
51
52
53
54
55
56
57
58
59
60

- 1
2
3
4
5
6
7
8
9
10
11
12
13
14
15
16
17
18
19
20
21
22
23
24
25
26
27
28
29
30
31
32
33
34
35
36
37
38
39
40
41
42
43
44
45
46
47
48
49
50
51
52
53
54
55
56
57
58
59
60
13. Luxton DD, McCann RA, Bush NE, Mishkind MC, Reger GM. mHealth for Mental Health: Integrating Smartphone Technology in Behavioral Healthcare. *Professional Psychology-Research and Practice*. Dec 2011;42(6):505-512.
 14. Bennett I, Switzer J, Aguirre A, Evans K, Barg F (2006) 'Breaking it down': patient-clinician communication and prenatal care among African American women of low and higher literacy. *Annals of Family Medicine* 4: 334-340.
 15. Bennett IM, Coco A, Coyne JC, et al. Efficiency of a two-item pre-screen to reduce the burden of depression screening in pregnancy and postpartum: An IMPLICIT network study. *J Amer B Fam Med*. 2008;21(4):317-325.
 16. Whooley MA, Avins AL, Miranda J, Browner WS (1997) Case-finding instruments for depression. Two questions are as good as many. *J Gen Int Med* 12: 439-445.
 17. Kroenke K, Spitzer RL, Williams JBW (2001) The PHQ-9 - Validity of a brief depression severity measure. *J Gen Int Med* 16: 606-613.
 18. Volk RJ, Llewellyn-Thomas H, Stacey D, Elwyn G. Ten years of the International Patient Decision Aid Standards Collaboration: evolution of the core dimensions for assessing the quality of patient decision aids. *Bmc Medical Informatics and Decision Making*. Nov 2013;13.
 19. Légaré, F., O'Connor, A. C., Graham, I., Saucier, D., Côté, L., Cauchon, M., et al. (2006). Supporting patients facing difficult health care decisions: use of the Ottawa Decision Support Framework.
 20. Yonkers KA, Wisner KL, Stewart DE, et al. The management of depression during pregnancy: a report from the American Psychiatric Association and the American

1
2
3 College of Obstetricians and Gynecologists. *General Hospital Psychiatry*. Sep-Oct
4
5 2009;31(5):403-413.
6
7
8
9
10
11
12
13
14
15
16
17
18
19
20
21
22
23
24
25
26
27
28
29
30
31
32
33
34
35
36
37
38
39
40
41
42
43
44
45
46
47
48
49
50
51
52
53
54
55
56
57
58
59
60

Confidential: For Review Only

Table 1. Examples of changes to design derived from SPIRIT group process – decision aid.

Functionality	Change	Reason for change
Personified Interface: 1. Audio/Video 2. Welcome 3. Guide to application	Addition of animated “guide” to live actor	1. Animation was engaging 2. Opportunity for more diversity in appearance of guide 3. Give patients opportunity to actively participate in application
Video presentation of content	Break videos into small clips of less than 1 minute	1. Allow users greater control of the experience 2. Users will lose interest and exit
Navigation	Allow users to skip sections of application	1. Allow users greater control of the experience 2. Users will lose interest and exit
Content	Change	Reason for change
Language used	Modification of guide scripts to a more familiar style	Patient team members found initial scripts to be intimidating and unfamiliar
Appearance of guides (live actor and animation)	Physical appearance including skin tone, hair style, clothing, age. Animated guides selected from a range of proposals.	Physical characteristics of the live actor and animation guides were selected based on their appeal to the team members – particularly patients
Selection of treatments	Elimination of some treatment options	Treatment options which were not realistically accessible to the target group were eliminated to save user time

1
2
3
4
5
6 **Table 2: Features of TIPS patient decision aid.**
7

8
9
10
11
12
13
14
15
16
17
18
19
20
21
22
23
24
25
26
27
28
29
30
31
32
33
34
35
36
37
38
39
40
41
42
43
44

Feature
General
<i>Audio-video</i>
<i>Interactive design</i>
Patient Decision Aid*
<i>Psychoeducation</i>
<i>Values clarification</i>
<i>Stratified presentation of options</i>
<i>Review of options</i>
<i>Patient-selected preferences</i>
Clinical needs of center
<i>Screening tool for risk of depression</i>
<i>Clinical summary</i>
<i>Provider decision support</i>
<i>Inclusion in electronic medical record</i>

45
46 *IPDAS components¹⁶
47
48
49
50
51
52
53
54
55
56
57
58
59
60

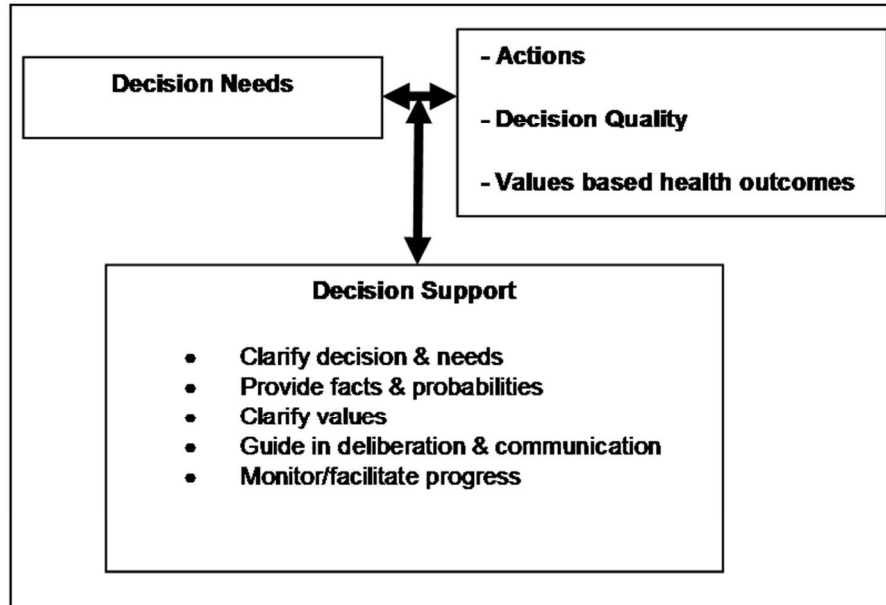
1
2
3
4
5
6
7
8
9
10
11
12
13
14
15
16
17
18
19
20
21
22
23
24
25
26
27
28
29
30
31
32
33
34
35
36
37
38
39
40
41
42
43
44
45
46
47
48
49
50
51
52
53
54
55
56
57
58
59
60

Table 3: Treatments covered in the TIPS PtDA

Treatment
Antidepressant medications
Psychotherapeutic counseling
Watchful waiting
Bright light therapy
Exercise
Behavioral activation
Massage therapy
Relaxation therapy
Music therapy

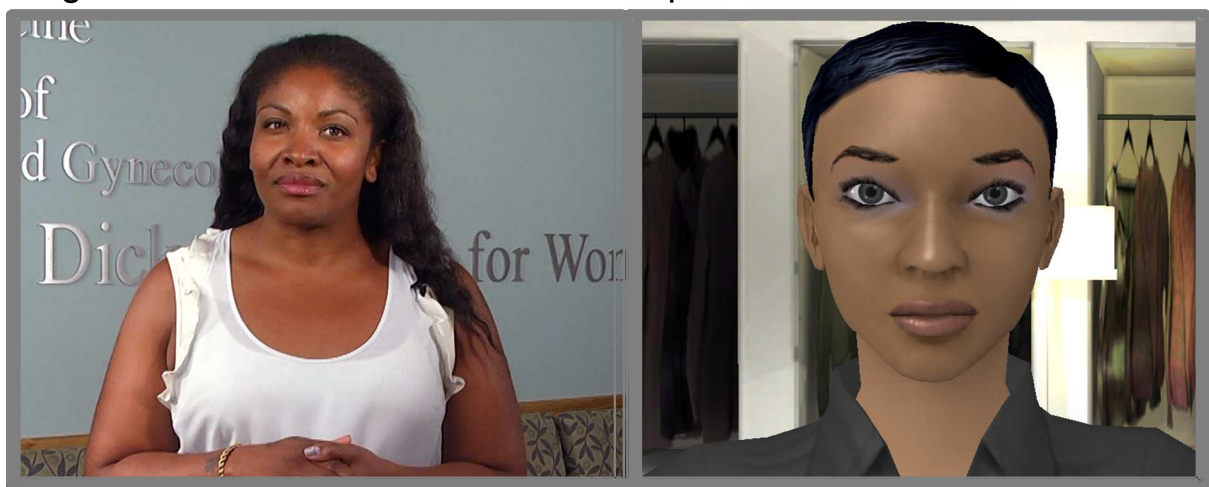
1
2
3
4
5
6
7
8
9
10
11
12
13
14
15
16
17
18
19
20
21
22
23
24
25
26
27
28
29
30
31
32
33
34
35
36
37
38
39
40
41
42
43
44
45
46
47
48
49
50
51
52
53
54
55
56
57
58
59
60

Figure 1. Ottawa Decision Support Framework.



1
2
3
4
5
6
7
8
9
10
11
12
13
14
15
16
17
18
19
20
21
22
23
24
25
26
27
28
29
30
31
32
33
34
35
36
37
38
39
40
41
42
43
44
45
46
47
48
49
50
51
52
53
54
55
56
57
58
59
60

Figure2. Selected characters for TIPS personified interface.



Live Actor

Animation

For Review Only

Figure 3. TIPS App schematic.

