



THE UNIVERSITY *of* EDINBURGH

Edinburgh Research Explorer

Patterns of IgE responses to multiple allergen components and clinical symptoms at age 11 years

Citation for published version:

Simpson, A, Lazic, N, Belgrave, DCM, Johnson, P, Bishop, C, Mills, C & Custovic, A 2015, 'Patterns of IgE responses to multiple allergen components and clinical symptoms at age 11 years', *Journal of Allergy and Clinical Immunology*, vol. 136, no. 5, pp. 1224-1231. <https://doi.org/10.1016/j.jaci.2015.03.027>

Digital Object Identifier (DOI):

[10.1016/j.jaci.2015.03.027](https://doi.org/10.1016/j.jaci.2015.03.027)

Link:

[Link to publication record in Edinburgh Research Explorer](#)

Document Version:

Publisher's PDF, also known as Version of record

Published In:

Journal of Allergy and Clinical Immunology

General rights

Copyright for the publications made accessible via the Edinburgh Research Explorer is retained by the author(s) and / or other copyright owners and it is a condition of accessing these publications that users recognise and abide by the legal requirements associated with these rights.

Take down policy

The University of Edinburgh has made every reasonable effort to ensure that Edinburgh Research Explorer content complies with UK legislation. If you believe that the public display of this file breaches copyright please contact openaccess@ed.ac.uk providing details, and we will remove access to the work immediately and investigate your claim.



Patterns of IgE responses to multiple allergen components and clinical symptoms at age 11 years

Angela Simpson, MD, PhD,^{a,*} Nevena Lazic, PhD,^{b,*§} Danielle C. M. Belgrave, PhD,^{a,c} Phil Johnson, PhD,^{a,d} Christopher Bishop, PhD,^b Clare Mills, PhD,^{a,d,‡} and Adnan Custovic, MD, PhD^{a,‡} *Manchester and Cambridge, United Kingdom*

Background: The relationship between sensitization to allergens and disease is complex.

Objective: We sought to identify patterns of response to a broad range of allergen components and investigate associations with asthma, eczema, and hay fever.

Methods: Serum specific IgE levels to 112 allergen components were measured by using a multiplex array (Immuno Solid-phase Allergen Chip) in a population-based birth cohort. Latent variable modeling was used to identify underlying patterns of component-specific IgE responses; these patterns were then related to asthma, eczema, and hay fever.

Results: Two hundred twenty-one of 461 children had IgE to 1 or more components. Seventy-one of the 112 components were recognized by 3 or more children. By using latent variable modeling, 61 allergen components clustered into 3 component groups (CG1, CG2, and CG3); protein families within each CG were exclusive to that group. CG1 comprised 27 components from 8 plant protein families. CG2 comprised 7 components of mite allergens from 3 protein families. CG3 included 27

components of plant, animal, and fungal origin from 12 protein families. Each CG included components from different biological sources with structural homology and also nonhomologous proteins arising from the same biological source. Sensitization to CG3 was most strongly associated with asthma (odds ratio [OR], 8.20; 95% CI, 3.49-19.24; $P < .001$) and lower FEV₁ ($P < .001$). Sensitization to CG1 was associated with hay fever (OR, 12.79; 95% CI, 6.84-23.90; $P < .001$). Sensitization to CG2 was associated with both asthma (OR, 3.60; 95% CI, 2.05-6.29) and hay fever (OR, 2.52; 95% CI, 1.38-4.61).

Conclusions: Latent variable modeling with a large number of allergen components identified 3 patterns of IgE responses, each including different protein families. In 11-year-old children the pattern of response to components of multiple allergens appeared to be associated with current asthma and hay fever but not eczema. (*J Allergy Clin Immunol* 2015;136:1224-31.)

Key words: *IgE, childhood, component-resolved diagnostics, latent variable modeling, allergens, asthma, wheeze, eczema, hay fever*

From ^athe Centre for Respiratory Medicine and Allergy, Institute of Inflammation and Repair, Manchester Academic Health Science Centre, University of Manchester & University Hospital of South Manchester; ^bMicrosoft Research Cambridge, Cambridge; and ^cthe Centre for Health Informatics, Institute of Population Health, and ^dthe Centre for Respiratory Medicine and Allergy, Institute of Inflammation and Repair, Manchester Institute of Biotechnology, University of Manchester.

*These authors contributed equally to this work as joint first authors.

‡These authors contributed equally to this work as joint senior authors.

§Dr Lazic is currently affiliated with Google, Mountain View, Calif.

Supported by Asthma UK (301, 362, 01/012, 04/014), the JP Moulton Charitable Foundation, the Medical Research Council (grants G0601361 and MR/K002449/1), and the North West Lung Centre Charity.

Disclosure of potential conflict of interest: A. Simpson has received research support from the Medical Research Council (G0601361 and MR/K002449/1), the JP Moulton Charitable Foundation, Thermo Fisher Scientific, EU FP7 Grant agreement no. 312147, and the National Institute for Health Research; has received speaker fees from GlaxoSmithKline, Thermo Fisher Scientific, and Chiesi; and has received travel support from GlaxoSmithKline. D. C. M. Belgrave is employed by GlaxoSmithKline. C. Mills is founding director of and member of the board of Reacta Biotech Ltd (a company commercializing oral food challenges) and has received research support from Reacta Biotech, the UK Biological and Biotechnological Sciences Research Council, DBV Technologies, Novartis, and the Medical Research Council. A. Custovic has received research support from the Medical Research Council (G0601361 and MR/K002449/1), the JP Moulton Charitable Foundation, North West Lung Research Centre Charity, European Union 7th Framework Programme Grant agreement no. 312147, and the National Institute for Health Research and has received personal fees from Novartis, Thermo Fisher, AstraZeneca, ALK-Abelló, and GlaxoSmithKline.

The rest of the authors declare that they have no relevant conflicts of interest.

Received for publication October 3, 2014; revised March 12, 2015; accepted for publication March 18, 2015.

Available online April 30, 2015.

Corresponding author: Angela Simpson, MD, PhD, University of Manchester, ERC Building, Second floor, University Hospital of South Manchester, Manchester M23 9LT, United Kingdom. E-mail: angela.simpson@manchester.ac.uk.

0091-6749

© 2015 The Authors. Published by Elsevier Inc. on behalf of the American Academy of Allergy, Asthma & Immunology. This is an open access article under the CC BY license (<http://creativecommons.org/licenses/by/4.0/>).

<http://dx.doi.org/10.1016/j.jaci.2015.03.027>

Although the presence of specific IgE (sIgE) to allergens is a major risk factor for asthma and hay fever, the relationship is inconsistent, and IgE-mediated sensitization is neither necessary nor sufficient for the expression of disease.¹ In clinical practice and research studies patients are usually assigned as being atopic or not based on the results of skin prick or sIgE tests to extracts made from whole allergen sources.^{2,3} One potential limitation of using whole-allergen extracts is that the sources used for their preparation contain multiple different allergenic proteins and that a positive result might reflect cross-reactivity consequent to homology between similar proteins in different allergen sources.⁴ The advent of molecular allergology has enabled investigators to identify individual proteins within whole allergen sources and to detect sIgE to individual allergen components.⁵ In patients with food allergy, measuring sensitization to components is more informative than measuring levels of IgE to whole extracts.^{4,6-8} For some allergen sources, there is a dominant component to which most sensitized subjects will react (eg, Fel d 1 is positive in almost all subjects with IgE to cat), but for others, no such dominant allergen exists (eg, sensitization to Can f 1, 2, 3, and 5 identifies less than half of those with IgE to dog).⁹

The commercialization of molecular or component-resolved diagnostics (CRD) has facilitated the development of products in which sIgE to more than 100 allergen components can be measured simultaneously by using small volumes of serum.^{10,11} One such technology is the multiplex Immuno Solid-phase Allergen Chip (ImmunoCAP Immuno Solid-phase Allergen Chip [ISAC]).¹² We have recently reported that ISAC data might facilitate better assessment of allergic airway diseases.¹³

The role of such “high-resolution” tools in clinical practice and how best to interpret the complex data they generate is a matter of

Abbreviations used

CG: Component group
CRD: Component-resolved diagnostics
eNO: Exhaled nitric oxide
ISAC: Immuno Solid-phase Allergen Chip
ISU: ISAC standardized units
OR: Odds ratio
sIgE: Serum IgE

some debate.^{14,15} Conventional analyses can overaggregate the underlying complexity¹⁶ and do not capture the heterogeneity in patterns of responses to multiple components, and therefore more sophisticated approaches are needed. A particularly appealing framework is that of latent variable models, in which a latent underlying mechanism explains the presence of multiple correlated items.¹⁷

We hypothesize that distinct patterns of component-specific IgE are associated with different clinical presentations. We propose that latent variable models can be used to identify such patterns and might facilitate better understanding of how data on sIgE to multiple allergen components can be interpreted within individual patients. To address our hypotheses, we measured levels of sIgE to 112 allergen components using a commercially available multiplex array in a population-based birth cohort and used a latent variable model to identify underlying patterns of component-specific IgE responses; these patterns were then related to asthma, eczema, and hay fever.

METHODS

Study population

The Manchester Asthma and Allergy Study is a population-based birth cohort.¹⁸⁻²² Subjects were recruited prenatally and followed prospectively. The study was reviewed by the local institutional review board, and parents provided written informed consent. We used data collected at follow-up at age 11 years for this study. Validated questionnaires were interviewer administered to collect information on parentally reported symptoms, physician-diagnosed diseases, and treatments received.²³ We performed spirometry and measured exhaled nitric oxide (eNO) levels and assessed airway hyperreactivity in a 5-step methacholine challenge test.²⁴

Definition of clinical outcomes

Current wheeze was defined as a positive answer to the following question: “Has your child had wheezing or whistling in the chest in the last 12 months?”²⁵

Current asthma was defined as a positive answer to 2 of 3 of the following questions: “Has the doctor ever told you that your child had asthma?”; “Has your child had wheezing or whistling in the chest in the last 12 months?”; and “Has your child had asthma treatment in the last 12 months?”²⁶

Current hay fever was defined as a positive answer to the following question: “Does your child have hay fever now?”²⁷

Current eczema was defined as a positive answer to the following question: “Has your child had an itchy rash that comes and goes in the last 12 months?”²⁵

Lung function was recorded as FEV₁ and forced vital capacity values.²⁸ Data were expressed as percent predicted FEV₁²⁹ and the FEV₁/forced vital capacity ratio.

Airway hyperreactivity was defined as a greater than 20% decrease in FEV₁ by the final stage of the challenge (16 mg/mL). We also calculated the dose-response slope to analyze the data as a continuous variable.¹⁹

eNO was recorded as a continuous variable in parts per billion.

CRD

We measured levels of sIgE to 112 allergenic molecules (components) from 51 sources using ImmunoCAP ISAC (Thermo Fisher Scientific, Uppsala, Sweden). Levels of component-specific IgE antibodies were reported in ISAC standardized units (ISU). We transformed (discretized) sIgE data using a binary threshold of 0.3 ISU into 4 categories, according to the manufacturer’s guidelines: no (<0.3 ISU), low (0.3-1 ISU), medium (1-15 ISU), and high (>15 ISU) sensitization.

Statistical grouping of allergen components

Our statistical model assumed that there exist clusters of allergen components to which subjects have a similar IgE responses (ie, either being sensitized or not to most of the components within the same cluster). We refer to these clusters as component groups (CGs). We restricted our analysis to 71 components for which there were at least 3 children with positive test results. Components to which fewer than 3 children were sensitized are listed in [Table E1](#) in this article’s Online Repository at www.jacionline.org. We modeled different patterns of IgE response in 221 children with any positive test results.

We inferred allergen clusters and child sensitization to each cluster using Expectation Propagation,³⁰ an algorithm for approximate Bayesian inference (see a detailed description in [Fig E1](#) in this article’s Online Repository at www.jacionline.org). We relied on the Expectation Propagation implementation (available in [Infer.NET](http://research.microsoft.com/infernet) <http://research.microsoft.com/infernet>), a Microsoft-owned library for large-scale Bayesian inference freely available for research purposes. Inference was performed based solely on IgE responses without using any information about protein structure or function or clinical phenotypes. We assigned a component to a CG if the posterior cluster membership probability was greater than 0.7 and characterized each child as sensitized to a CG if the posterior sensitization probability was greater than 0.5. Robustness and reproducibility of the results were assessed by repeating the analysis on 20 random subsets of 200 subjects.

Sequence, structure, and function of allergen components within CGs

We then investigated the sequence, structure, and functional properties of components clustered within the inferred CGs. We compiled an allergen sequence database (available on request) using allergens listed in the ALLFAM database (<http://www.meduniwien.ac.at/allergens/allfam>; release 2011-09-12)³¹ downloaded from the UniProt database (<http://www.uniprot.org>). Allergen sequences were grouped by Pfam clan/family designation and aligned with ClustalW2³² by using default settings. Dendrograms (average distance, BLOSUM62) were drawn by using Jalview, version 2.7. Dendrograms were colored and annotated by using Figtree, version 1.3.1 (<http://tree.bio.ed.ac.uk/software/figtree>). Within each protein family within a CG where 3 or more family members were present, we used a Venn diagram to map the distribution of sensitization.

Associations between CGs and clinical outcomes

Each child was assigned a probability of being sensitized to each CG on a scale of 0 to 1. We then modeled the quantitative CG scores for each participant as a latent variable predictor of clinical outcome using multivariate logistic regression tests. In addition, we assigned each child as sensitized or not to each of the CGs by using a posterior cutoff threshold of 0.5 or greater, noting that each child could be sensitized to any combination of CGs, to quantify the prevalence of sensitization to each CG and provide descriptive statistics of the characteristics of children sensitized to each CG. Analyses were performed with Stata 12.1 and SPSS 20 software (IBM, Armonk, NY).

RESULTS

Participant flow and demographic data

Among 1184 children born into the cohort, 822 attended follow-up at age 11 years; of these, CRD data were obtained for

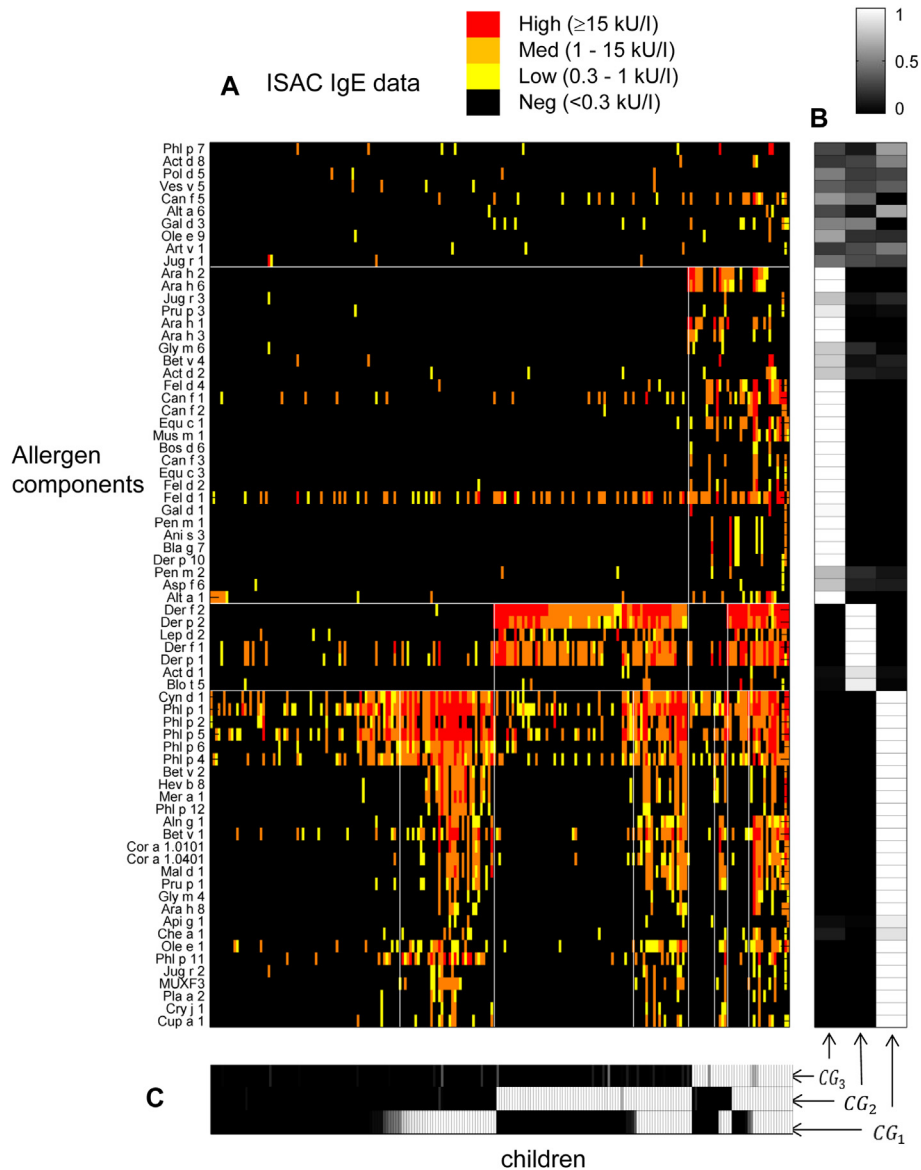


FIG 1. A, Specific IgE for each child to each allergen (quaternary scale, color coded: *black*, negative; *yellow*, low; *orange*, medium; and *red*, high). Allergen components are sorted according to CG membership, and children are sorted according to CG sensitization. B, Probability of each allergen component belonging to each CG (*grayscale*) based on the posterior distribution, indicating that for the 61 allergen components assigned to a CG, the probability was generally high (*white*, usually >0.9). C, Probability of each child being sensitized to each of the CGs (*grayscale*) based on the posterior sensitization probabilities, showing that children were frequently sensitized to more than 1 CG and that all combinations of sensitization were seen.

461 (56.1%). There were no significant differences in demographic characteristics between children with and without CRD data (see Table E2 in this article's Online Repository at www.jacionline.org). Of 461 children included in this study, 221 (47.9%) had a positive sIgE result to at least one of the 112 allergen components, and 58 (12.5%) had asthma.

Characteristics of CGs

Of the 71 allergen components included in the model, 61 clustered into 3 groups (CG1, CG2, and CG3; Fig 1, A, and see Table E3 in this article's Online Repository at www.jacionline.org). The remaining 10 components did not strongly belong to

any cluster, and therefore we did not assign these to any CG (non-CG components, see Table E3). The posterior distribution used to assign components to groups is shown in Fig 1, B. Most of the components were assigned to a single group with very high probability (>0.9). Group membership was very stable, as demonstrated by the component similarity matrix in Fig E2 in this article's Online Repository at www.jacionline.org. Repeating the analysis using quaternary data produced similar results, with CG assignment differing in only 3 components (see Table E4 in this article's Online Repository at www.jacionline.org). However, group membership was less stable (see Fig E3 in this article's Online Repository at www.jacionline.org). Therefore we opted for the binary data

TABLE I. Allergen components within each CG

CG	Pfam protein family	ISAC component	
CG1	β-Expansins (including N- and C-terminal domains)	C- and N-terminal domains: nCyn d 1, rPhl p 1 , N-terminal domain only: rPhl p 2	
	Ribonuclease	rPhl p 5, rPhl p 6	
	Berberine bridge (FAD binding)	nPhl p 4	
	Profilin	rBet v 2, rHev b 8, rMer a 1, rPhl p 12	
	Bet v 1 like (PR10)	rAln g 1, rBet v 1, rCor a 1.0101, rCor a 1.0401 , Mal d 1, rPru p 1, rGly m 4, rAra h 8, rApi g 1	
	Ole e 1 family	rChe a 1, rOle e 1, rPhl p 11	
	CCD	Jug r 2, MUXF3	
	Glycosylhydrolase family 28 (polygalacturonase and pectate lyase)	nPla a 2, nCry j 1, nCup a 1	
	MD-2-related lipid recognition (ML) domain (group 2 mite allergens)	rDer p 2, rDer f 2, rLep d 2	
	Cysteine protease	nDer p 1, nDer f 1, nAct d 1	
CG2	Mite allergen family 5	rBlo t 5	
	Prolamin	rAra h 2, nAra h 6, nJug r 3, rPru p 3	
CG3	Cupin	rAra h 1, rAra h 3, nGly m 6	
	EF hand	rBet v 4	
	Thaumatococin family	nAct d 2	
	Lipocalin	rCan f 1, rCan f 2, rEqu c 1, rFel d 4, Mus m1	
	Serum albumin	nBos d 6, nCan f 3, nEqu c 3, nFel d 2	
	Uteroglobulin-like	rFel d 1	
	Kazal-type inhibitor	nGal d 1	
	Tropomyosin	nPen m 1, rAni s 3, nBla g 7, rDer p 10	
	ATP:guanido phosphotransferase (arginine kinase)	nPen m 2	
	Superoxide dismutase	rAsp f 6	
	Unique to fungi	Alt a 1	
	Non-CG	EF-hand	rPhl p 7
		Bet v 1 like	rAct d 8
		Cysteine-rich secretory protein family (venom antigen)	rPol d 5, rVes v 5
		Trypsin-like serine protease (peptidase S1)	rCan f 5
Enolase		rAlt a 6	
Transferrin		rGal d 3	
Glycosyl hydrolases family 17 (β-glucanase)		rOle e 9	
γ-Thionin (thionin with O-glycans; Art v 1 family)	nArt v 1		
Cupin	nJug r 1		

Pollen allergens are shown in boldface. Allergen nomenclature is based on that of the International Union of Immunological Societies Allergen subcommittee.³³ PR10, Pathogenesis-related class 10 proteins.

representation because it was sufficient to find patterns in the data, while requiring fewer model parameters.

The allergen components within each CG were then sorted by protein family (Pfam), as presented in Table I³³ (see detailed accession numbers Table E5 in this article's Online Repository at www.jacionline.org). CG1 comprised 27 components exclusively of plant origin belonging to 8 different protein families. CG2 comprised 7 components almost exclusively made up of mite allergens classified into 3 protein families. CG3 was the most complex and included 27 components of plant, animal, and fungal origin drawn from 12 protein families. Of note, the protein families within each CG were exclusive to that group.

Ten non-CG allergens (to which there were generally fewer positive test results) came from 9 protein families; 2 were venom allergens, and 5 were from protein families not otherwise represented on the microarray. The 3 remaining allergens in the non-CG group are from protein families that already fall within CGs but to which very few children reacted.

Sequence and structure of allergen components within CGs

Unrooted dendrograms of allergens belonging to different protein families within CGs and accompanying Venn diagrams

mapping the distribution of sensitization to each component within each protein family (when ≥3 family members were present) are presented in Figs E4 to E8 in this article's Online Repository at www.jacionline.org. For some protein families, almost all subjects were sensitized to a single dominant allergen. Within the profilin family, the dominant allergens were Mer a 1 and Hev b 8, which bound IgE from all profilin-reactive subjects (see Fig E4). For the expansin family, Phl p 1 was the dominant allergen (see Fig E5). For the Bet v 1-like family, all but 1 child was sensitized to Bet v 1 (see Fig E6). For pectate lyase, only 3 of the 8 family members are represented on ISAC, and most subjects were sensitized to Cup a 1 (see Fig E7).

Similar relationships were observed for the CG2 components, with the cysteine proteases being dominated by Der p 1, whereas Der f 2 was the dominant allergen for the MD-2-related lipid recognition domain (ML domain) proteins (see Fig E9 in this article's Online Repository at www.jacionline.org).

For CG3 (see Fig E10 in this article's Online Repository at www.jacionline.org), the cupin allergen family was dominated by Ara h 1. For the prolamin family, Ara h 2 appeared to predominate, and for the serum albumins, it was Fel d 2. Fel d 1 was a frequent sensitizer in CG3, but it is the only member of the uteroglobulin-like family identified as an allergen. A dominant allergen was less likely to be identifiable where

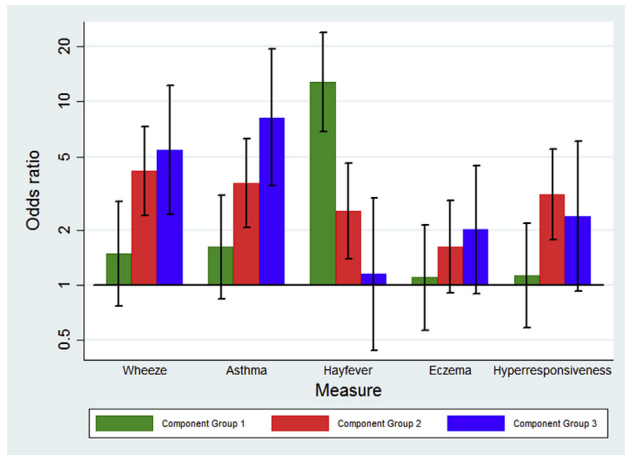


FIG 2. Association between sensitization to CGs and clinical outcomes. Error bars represent 95% CIs of the OR shown on a log scale.

few children were sensitized to that protein family. Although few children were sensitized to tropomyosins, most children were sensitized to most allergens, without a clear dominant allergen. For the lipocalins, the overlapping sensitization patterns were not clear, although Can f 1 was the most common sensitizing allergen.

Relationship between CG sensitization and clinical outcomes

We investigated the association between sensitization to each CG and clinical outcomes using the quantitative CG scores in a multivariate analysis (Fig 2 and Table II). Children sensitized to CG3 were more likely to have asthma (odds ratio [OR], 8.20; 95% CI, 3.49-19.24; $P < .001$), as were children sensitized to CG2 (OR, 3.60; 95% CI, 2.05-6.29; $P < .001$) but not CG1. A similar pattern was seen for wheeze. For hay fever, sensitization to CG1 was the strongest predictor (OR, 12.79; 95% CI, 6.84-23.90; $P < .001$), with a smaller effect seen for sensitization to CG2. For eczema, there was no significant association between sensitization to any of the CGs.

For lung function, only children sensitized to CG3 had a significantly poorer FEV₁ percent predicted, with values in this group on average 6.8% lower than in children not sensitized to CG3 (95% CI, 2.69-11.06; $P = .001$; Fig 3, A). Airway reactivity was significantly greater in those sensitized to CG2, whether expressed as a dose/response ratio or a positive or negative methacholine challenge result (Fig 2). eNO levels were significantly higher among children sensitized to each of the CGs ($P < .001$; Fig 3, B).

We then assigned each child as sensitized or not to each of the CGs using a posterior cutoff threshold of 0.5 or greater. Of the 149 children who were sensitized to 1 or more CGs, 99 were sensitized to only 1, 34 were sensitized to 2, and 16 were sensitized to all 3 CGs (see Fig E11 and Tables E6 and E7 in this article's Online Repository at www.jacionline.org). For the nonsensitized group, two thirds of children were disease free, and eczema was numerically the most common disease (21.4%). For those sensitized to CG3, 28.6% had asthma, eczema, and hay fever as comorbidities, and only 2 (5.7%) children were disease free.

DISCUSSION

We demonstrated that different patterns of IgE responses to multiple allergen components can be uncovered using latent variable modeling and that each pattern bears different associations with clinical outcomes. Within those children with IgE responses, the allergen components to which they had IgE fell into 3 major clusters. The clustering was robust, reproducible, and biologically plausible. The review of the protein families to which the allergen components within each CG belonged indicated striking patterns, with each protein family being exclusive to only 1 CG. (Of note, the algorithms by which CGs were identified did not impose any prior clinical knowledge/information on protein sequence or clinical phenotypes of children.) Importantly, although children could be sensitized to more than 1 CG (and frequently were), sensitization to each distinct cluster (or CG) was associated with different patterns of disease. These results are consistent with our recent findings, which suggested the existence of multiple atopy phenotypes.^{34,35}

The main limitation of our study is that there are a number of potentially important allergens that are not included on the ISAC chip, such as those from fungi (ISAC has only 6 of the 109 fungal allergens identified in the International Union of Immunological Societies). The use of recombinant allergens means posttranslational modifications, such as proline hydroxylation, which are important for IgE binding in some allergens, such as Ara h 2.³⁶ It is possible that the clustering would have been different if additional or alternative allergen components had been available. We also observed that a proportion of children who were not sensitized to any allergen reported symptoms of "allergic" disease, particularly eczema, which was reported in almost 20% of these children. This has been observed in other studies³⁷ and reflects the heterogeneity of these diseases in the population.

Sensitization to CG1 (comprising allergens of 8 different protein families of plant origin, all of which, apart from CCD, can be found in pollens) was strongly associated with hay fever (>12-fold compared with those not sensitized to CG1) but not asthma or wheeze. In their classification of pollen allergens, Radauer and Breiteneder³⁸ identified that of the 2615 protein families found in seed plants, 29 accounted for more than 150 pollen allergens described. Of the 9 most abundant protein families that were identified as dominating the pollen allergen landscape, all but one clustered in CG1. The remaining common family (EF hand, represented by Bet v 4) clustered to CG3, but only 5 children were sensitized to this allergen. Within individual protein families in CG1, it was often possible to identify a "lead/dominant" allergen to which almost all children were sensitized; for example, among the β -expansins, all children reacted to Phl p 1. Bermuda grass is not found in the United Kingdom, yet 115 subjects had IgE to Cyn d 1. It is likely that this represents cross-reactivity with Phl p 1, which has approximately 67% sequence identity to Cyn d 1. For the profilins, all children were sensitized to Mer a 1 (pollen from annual mercury, a weed commonly seen in Europe) and Hev b 8, and most were also sensitized to Phl p 12 and Bet v 2. For the Bet v 1-like allergens, Bet v 1 was the allergen to which most children were sensitized. It was interesting to observe that for all protein families in CG1, the ISAC array contained at least 1 component known to be present in pollen (www.Allergome.org), and for each individual protein family, the pollen allergen or allergens are frequently the one or ones to which much of the

TABLE II. Association between sensitization to CGs and clinical outcomes

Sensitization to:	Current wheeze (OR [95% CI]), <i>P</i> value	Current asthma (OR [95% CI]), <i>P</i> value	Current hay fever (OR [95% CI]), <i>P</i> value	Eczema (OR [95% CI]), <i>P</i> value
CG1	1.48 (0.77-2.84), .24	1.61 (0.84-3.10), .15	12.79 (6.84-23.90), <.001	1.10 (0.57-2.13), .78
CG2	4.19 (2.41-7.30), <.001	3.60 (2.05-6.29), <.001	2.52 (1.38-4.61), .003	1.62 (0.91-2.90), .10
CG3	5.44 (2.42-12.24), <.001	8.20 (3.49-19.24), <.001	1.15 (0.44-3.00), .77	2.00 (0.89-4.49), .09

Values in boldface indicate statistical significance.

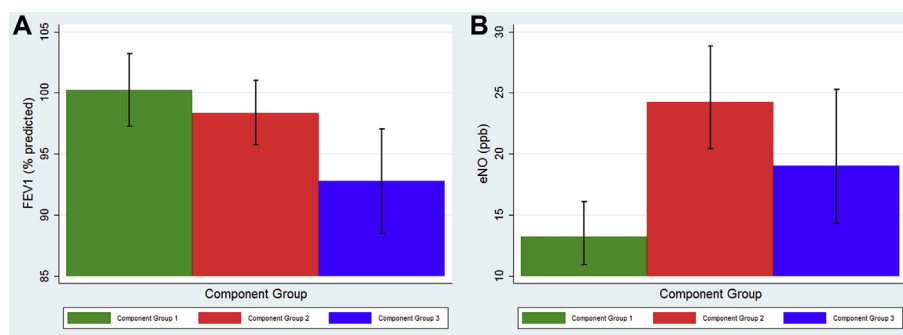


FIG 3. Estimated marginal means for FEV₁ (percent predicted; **A**) and eNO (**B**) in those sensitized to CGs.

children are sensitized, indicating that these might be the lead allergens. At age 11 years, many children had sIgE to all of Phl p 1, 2, 4, 5, 6, 11, and 12. This is in keeping with the concept of “molecular spreading,” as suggested by the analyses in the German Multicenter Atopy Study 90 cohort.³⁹

For CG2, the allergen components were predominantly from dust mites and included the cysteine protease family, where Der p 1 was the allergen to which all children were sensitized, and the group 2 mite allergens, where Der f 2 was the dominant component. Sensitization to CG2 was associated with an approximately 3-fold increase in asthma and a 2-fold increase in hay fever; no association was seen with FEV₁, but there was a significant increase in airway hyperresponsiveness.

CG3 contained a broad range of protein families, many represented by a single component, and this was the CG to which fewest children were sensitized (8.5%). Sensitization to CG3 was most strongly associated with asthma; FEV₁ was significantly less in this group (almost 7% less than in those not sensitized to CG3), with a trend for the airways to be more reactive to methacholine. Almost all allergens from domestic pets clustered in this CG. Within the lipocalin protein family, most children were sensitized to Can f 1, and all those sensitized to Can f 2 were sensitized to multiple lipocalins, with a few children sensitized only to Equ c 1 (n = 5) or Fel d 4 (n = 6). Of the 9 children sensitized to Can f 2, all but 1 had asthma. In a recent description of the characteristics of a pediatric population with severe asthma, Konradsen et al⁹ identified that sensitization to the lipocalins Can f 2 and Equ c 1 was associated with severe asthma, whereas for serum albumins (Fel d 2, Can f 3, and Equ c 3), there was no difference between severe and controlled disease. Furthermore, all children sensitized to Can f 2 were in the severe asthma group. It has been suggested that because of sequence similarity with endogenous human lipocalins, these proteins lie at the borderline between self and nonself, which could predispose to T_H2 immunity.⁴⁰

The patterns we observed can be explained in part by the structural relationships of the allergen components within protein families, as indicated by their sequence similarities (shown in the

unrooted dendrograms); that is, within protein families, there are allergens from different biological sources that show significant structural homology. In addition, the collection of protein families within each CG appears to reflect the propensity to develop IgE antibodies to multiple nonhomologous proteins arising from the same biological source. For example, CG1 included almost all of the pollen allergens tested, CG2 included almost all of the dust mite allergens, and CG3 included animal and food allergens. That individual subjects have detectable IgE to multiple members of the same protein family is not in itself a novel observation, and it is not surprising that such allergen components would be in the same CG. As a consequence, each protein family is exclusive to one of the 3 CGs. Indeed, in a study of patients recruited from allergy clinic in Italy, Scala et al⁴¹ analyzed IgE component results (from an earlier version of ISAC containing 73 allergen components) in more than 3000 patients with IgE reactivity to any member of 3 “panallergen” groups (tropomyosins, profilins, and pathogenesis-related class 10 proteins). They identified a significant direct relationship between different representative molecules within each panallergen group (correlation coefficient usually >0.7). However, when they performed supervised clustering on these data, the components clustered within these panallergen groups, with little evidence of sensitization to more than 1 panallergen. This contrasts with our findings (where pathogenesis-related class 10 protein and profilin components were in the same CG), which might reflect differences in the components included, populations studies, and clustering methodologies used.

The mechanism of development of IgE to a diverse range of proteins from a common biological source is unclear. The nature of T-cell responses to specific environmental allergens might be determined in part by relative expression of different pattern recognition receptors on the surfaces of antigen-presenting cells,⁴² and the role of component-specific IgE on the uptake of the component by dendritic cells is another intriguing finding.⁴³ Genetic variation within the HLA locus can also influence the pattern of development of IgE to multiple allergens.^{44,45}

In conclusion, our results suggest that distinct patterns of IgE responses to different protein families are associated with different clinical symptoms. Latent variable modeling might help identification of these patterns and development of algorithms that can facilitate better interpretation of multiple sIgE allergen component data. However, our findings need to be replicated in other populations before such algorithms can be developed and applied in the clinic.

We thank Jonas Lidholm (Thermo Fisher–Phadia) for helpful discussions regarding allergen accessions on the ISAC array. We also thank the children and parents of the Manchester Asthma and Allergy Study cohort for their commitment to the project and their continued support and enthusiasm. We acknowledge the dedication of the Manchester Asthma and Allergy Study research team (research fellows, nurses, physiologists, technicians, and clerical staff). Finally, we thank Mr Philip Foden for assistance with statistical analysis and in preparing figures.

Key messages

- IgE responses to allergen components in a multiplex array (ISAC) cluster into 3 main groups in a population of 11-year-old children.
- These groups contain both homologous proteins from different sources and nonhomologous proteins from the same source.
- IgE responses to clusters of allergens can be differentially associated with respiratory allergies but not with eczema.

REFERENCES

1. Custovic A, Lazic N, Simpson A. Pediatric asthma and development of atopy. *Curr Opin Allergy Clin Immunol* 2013;13:173-80.
2. Heinzerling LM, Burbach GJ, Edenharter G, Bachert C, Bindslev-Jensen C, Bonini S, et al. GA(2)LEN skin test study I: GA(2)LEN harmonization of skin prick testing: novel sensitization patterns for inhalant allergens in Europe. *Allergy* 2009;64:1498-506.
3. Johansson SG, Hourihane JO, Bousquet J, Bruijnzeel-Koomen C, Dreborg S, Haahtela T, et al. A revised nomenclature for allergy. An EAACI position statement from the EAACI nomenclature task force. *Allergy* 2001;56:813-24.
4. Nicolaou N, Murray C, Belgrave D, Poorafshar M, Simpson A, Custovic A. Quantification of specific IgE to whole peanut extract and peanut components in prediction of peanut allergy. *J Allergy Clin Immunol* 2011;127:684-5.
5. Melioli G, Passalacqua G, Canonica GW, Baena-Cagnani CE, Matricardi P. Component-resolved diagnosis in pediatric allergic rhinoconjunctivitis and asthma. *Curr Opin Allergy Clin Immunol* 2013;13:446-51.
6. Caubet JC, Kondo Y, Urisu A, Nowak-Wegrzyn A. Molecular diagnosis of egg allergy. *Curr Opin Allergy Clin Immunol* 2011;11:210-5.
7. Nicolaou N, Poorafshar M, Murray C, Simpson A, Winell H, Kerry G, et al. Allergy or tolerance in children sensitized to peanut: prevalence and differentiation using component-resolved diagnostics. *J Allergy Clin Immunol* 2010;125:191-7, e1-13.
8. Custovic A, Nicolaou N. Peanut allergy: overestimated in epidemiology or underdiagnosed in primary care? *J Allergy Clin Immunol* 2011;127:631-2.
9. Konradsen JR, Nordlund B, Onell A, Borres MP, Gronlund H, Hedlin G. Severe childhood asthma and allergy to furry animals: refined assessment using molecular-based allergy diagnostics. *Pediatr Allergy Immunol* 2014;25:187-92.
10. Treudler R, Simon JC. Overview of component resolved diagnostics. *Curr Allergy Asthma Rep* 2013;13:110-7.
11. Valenta R, Lidholm J, Niederberger V, Hayek B, Kraft D, Grönlund H. The recombinant allergen-based concept of component-resolved diagnostics and immunotherapy (CRD and CRIT). *Clin Exp Allergy* 1999;29:896-904.
12. Melioli G, Bonifazi F, Bonini S, Maggi E, Mussap M, Passalacqua G, et al. The ImmunoCAP ISAC molecular allergology approach in adult multi-sensitized Italian patients with respiratory symptoms. *Clin Biochem* 2011;44:1005-11.
13. Prospero MC, Belgrave D, Buchan I, Simpson A, Custovic A. Challenges in interpreting allergen microarrays in relation to clinical symptoms: a machine learning approach. *Pediatr Allergy Immunol* 2014;25:71-9.
14. Antonicelli L, Massaccesi C, Braschi MC, Cinti B, Bilo MB, Bonifazi F. Component resolved diagnosis in real life: the risk assessment of food allergy using microarray-based immunoassay. *Eur Ann Allergy Clin Immunol* 2014;46:30-4.
15. Nettis E, Bonifazi F, Bonini S, Di Leo E, Maggi E, Melioli G, et al. Molecular diagnosis and the Italian Board for ISAC. *Eur Ann Allergy Clin Immunol* 2014;46:68-73.
16. Bishop CM. Model-based machine learning. *Philos Trans A Math Phys Eng Sci* 2013;371:20120222.
17. Bishop CM. Latent variable models. In: Jordan MI, editor. *Learning in graphical models*. Boston: MIT Press; 1999. pp. 371-403.
18. Custovic A, Simpson BM, Murray CS, Lowe L, Woodcock A. The National Asthma Campaign Manchester Asthma and Allergy Study. *Pediatr Allergy Immunol* 2002;13:32-7.
19. Belgrave DC, Simpson A, Semic-Jusufagic A, Murray CS, Buchan I, Pickles A, et al. Joint modeling of parentally reported and physician-confirmed wheeze identifies children with persistent troublesome wheezing. *J Allergy Clin Immunol* 2013;132:575-83.e12.
20. Kljaic-Bukvic B, Blekic M, Aberle N, Curtin JA, Hankinson J, Semic-Jusufagic A, et al. Genetic variants in endotoxin signalling pathway, domestic endotoxin exposure and asthma exacerbations. *Pediatr Allergy Immunol* 2014;25:552-7.
21. Nicolaou NC, Simpson A, Lowe LA, Murray CS, Woodcock A, Custovic A. Day-care attendance, position in sibship, and early childhood wheezing: a population-based birth cohort study. *J Allergy Clin Immunol* 2008;122:500-6.e5.
22. Nicolaou NC, Lowe LA, Murray CS, Woodcock A, Simpson A, Custovic A. Exhaled breath condensate pH and childhood asthma: unselected birth cohort study. *Am J Respir Crit Care Med* 2006;174:254-9.
23. Weiland SK, Bjorksten B, Brunekreef B, Cookson WO, von Mutius E, Strachan DP, et al. Phase II of the International Study of Asthma and Allergies in Childhood (ISAAC II): rationale and methods. *Eur Respir J* 2004;24:406-12.
24. Popa V. ATS guidelines for methacholine and exercise challenge testing. *Am J Respir Crit Care Med* 2001;163:292-3.
25. Asher MI, Keil U, Anderson HR, Beasley R, Crane J, Martinez F, et al. International Study of Asthma and Allergies in Childhood (ISAAC): rationale and methods. *Eur Respir J* 1995;8:483-91.
26. Lodrup Carlsen KC, Roll S, Carlsen KH, Mowinckel P, Wijga AH, Brunekreef B, et al. Does pet ownership in infancy lead to asthma or allergy at school age? Pooled analysis of individual participant data from 11 European birth cohorts. *PLoS One* 2012;7:e43214.
27. Braun-Fahrlander C, Wuthrich B, Gassner M, Grize L, Sennhauser FH, Varonier HS, et al. Validation of a rhinitis symptom questionnaire (ISAAC core questions) in a population of Swiss school children visiting the school health services. SCARPOL-team. Swiss Study on Childhood Allergy and Respiratory Symptom with respect to Air Pollution and Climate. *International Study of Asthma and Allergies in Childhood. Pediatr Allergy Immunol* 1997;8:75-82.
28. Simpson A, Custovic A, Tepper R, Graves P, Stern DA, Jones M, et al. Genetic variation in vascular endothelial growth factor- α and lung function. *Am J Respir Crit Care Med* 2012;185:1197-204.
29. Stanojevic S, Wade A, Cole TJ, Lum S, Custovic A, Silverman M, et al. Spirometry centile charts for young Caucasian children: the Asthma UK Collaborative Initiative. *Am J Respir Crit Care Med* 2009;180:547-52.
30. Minka T. Expectation Propagation for approximate Bayesian inference. In: *Proceedings of the 17th Conference on Uncertainty in Artificial Intelligence*; 2001. San Francisco (CA): Morgan Kaufmann, 2001; pp. 362-9.
31. Radauer C, Bublin M, Wagner S, Mari A, Breiteneder H. Allergens are distributed into few protein families and possess a restricted number of biochemical functions. *J Allergy Clin Immunol* 2008;121:847-52.e7.
32. Larkin MA, Blackshields G, Brown NP, Chenna R, McGettigan PA, McWilliam H, et al. Clustal W and Clustal X version 2.0. *Bioinformatics* 2007;23:2947-8.
33. Radauer C, Nandy A, Ferreira F, Goodman RE, Larsen JN, Lidholm J, et al. Update of the WHO/IUIS Allergen Nomenclature Database based on analysis of allergen sequences. *Allergy* 2014;69:413-9.
34. Lazic N, Roberts G, Custovic A, Belgrave D, Bishop CM, Winn J, et al. Multiple atopy phenotypes and their associations with asthma: similar findings from two birth cohorts. *Allergy* 2013;68:764-70.
35. Simpson A, Tan VY, Winn J, Svensen M, Bishop CM, Heckerman DE, et al. Beyond atopy: multiple patterns of sensitization in relation to asthma in a birth cohort study. *Am J Respir Crit Care Med* 2010;181:1200-6.
36. Bernard H, Guillon B, Drumare MF, Paty E, Dreskin SC, Wal JM, et al. Allergenicity of peanut component Ara h 2: contribution of conformational versus linear hydroxyproline-containing epitopes. *J Allergy Clin Immunol* 2015;135:1267-74.

37. Flohr C, Weiland SK, Weinmayr G, Bjorksten B, Braback L, Brunekreef B, et al. The role of atopic sensitization in flexural eczema: findings from the International Study of Asthma and Allergies in Childhood Phase Two. *J Allergy Clin Immunol* 2008;121:141-7.e4.
38. Radauer C, Breiteneder H. Pollen allergens are restricted to few protein families and show distinct patterns of species distribution. *J Allergy Clin Immunol* 2006;117:141-7.
39. Hatzler L, Panetta V, Lau S, Wagner P, Bergmann RL, Illi S, et al. Molecular spreading and predictive value of preclinical IgE response to *Phleum pratense* in children with hay fever. *J Allergy Clin Immunol* 2012;130:894-901.e5.
40. Virtanen T, Kinnunen T, Rytönen-Nissinen M. Mammalian lipocalin allergens—insights into their enigmatic allergenicity. *Clin Exp Allergy* 2012;42:494-504.
41. Scala E, Alessandri C, Palazzo P, Pomponi D, Liso M, Bernardi ML, et al. IgE recognition patterns of profilin, PR-10, and tropomyosin panallergens tested in 3,113 allergic patients by allergen microarray-based technology. *PLoS One* 2011;6:e24912.
42. Emara M, Royer PJ, Mahdavi J, Shakib F, Ghaemmaghami AM. Retagging identifies dendritic cell-specific intercellular adhesion molecule-3 (ICAM3)-grabbing non-integrin (DC-SIGN) protein as a novel receptor for a major allergen from house dust mite. *J Biol Chem* 2012;287:5756-63.
43. Sharquie IK, Al-Ghoulh A, Fitton P, Clark MR, Armour KL, Sewell HF, et al. An investigation into IgE-facilitated allergen recognition and presentation by human dendritic cells. *BMC Immunol* 2013;14:54.
44. Potaczek DP, Kabesch M. Current concepts of IgE regulation and impact of genetic determinants. *Clin Exp Allergy* 2012;42:852-71.
45. Mudde GC, Bheekha R, Buijnzeel-Koomen CA. IgE-mediated antigen presentation. *Allergy* 1995;50:193-9.