



THE UNIVERSITY *of* EDINBURGH

Edinburgh Research Explorer

## Pharmacological therapy for the prevention and treatment of weakness after critical illness: a systematic review

### Citation for published version:

ERACIP group, Shepherd, S, Newman, R, Brett, S & Griffith, D 2016, 'Pharmacological therapy for the prevention and treatment of weakness after critical illness: a systematic review', *Critical Care Medicine*, vol. 44, no. 6, pp. 1198-1205. <https://doi.org/10.1097/CCM.0000000000001652>

### Digital Object Identifier (DOI):

[10.1097/CCM.0000000000001652](https://doi.org/10.1097/CCM.0000000000001652)

### Link:

[Link to publication record in Edinburgh Research Explorer](#)

### Document Version:

Peer reviewed version

### Published In:

Critical Care Medicine

### Publisher Rights Statement:

Author's final peer-reviewed manuscript as accepted for publication

### General rights

Copyright for the publications made accessible via the Edinburgh Research Explorer is retained by the author(s) and / or other copyright owners and it is a condition of accessing these publications that users recognise and abide by the legal requirements associated with these rights.

### Take down policy

The University of Edinburgh has made every reasonable effort to ensure that Edinburgh Research Explorer content complies with UK legislation. If you believe that the public display of this file breaches copyright please contact [openaccess@ed.ac.uk](mailto:openaccess@ed.ac.uk) providing details, and we will remove access to the work immediately and investigate your claim.



# Pharmacological therapy for the prevention and treatment of weakness after critical illness: a systematic review

Dr. Stephen J. Shepherd MBBS, MRCP, FRCA, FFICM<sup>1</sup>, Dr. Richard Newman<sup>2</sup>, Dr. Stephen J. Brett MD, FRCA, FFICM<sup>3</sup> and Dr. David M. Griffith MB ChB, MD, FRCA, FFICM<sup>4</sup> on behalf of the ERACIP study investigators.

## Affiliations:

1. Bart's & The London School of Anaesthesia & Intensive Care, Royal London Hospital, London, UK
2. University of Edinburgh, Edinburgh, UK
3. Centre for Peri-Operative Medicine & Critical Care Research, Imperial College Healthcare NHS Trust, London, UK
4. MRC Centre for Inflammation Research, University of Edinburgh, Edinburgh, UK

## Corresponding author:

Dr. David M. Griffith  
Senior Clinical Research Fellow and Consultant in Critical Care & Anaesthesia  
MRC Centre for Inflammation Research, University of Edinburgh  
The Queens Medical Research Institute  
47 Little France Crescent  
Edinburgh  
EH16 4TJ

**e-mail:** david.m.griffith@ed.ac.uk

**tel:** 01312423134

**Author's contributions:** *SJS*: Design of paper, collection of data, literature review, writing of first draft, writing of final draft, revision of manuscripts, approval of final draft; *RN*: Collection of data, revision of manuscripts, approval of final draft; *SJB*: Original concept, revision of manuscripts, approval of final draft. *DMG*: Design of paper, collection of data, literature review, writing of first draft, writing of final draft, revision of manuscripts, approval of final draft.

**Financial Support:** No financial support was provided for the study

**Reprints:** No reprints will be ordered

**Keywords:** Critical Illness; Polyneuropathy, Critical Illness; Muscular Diseases;

**Word Count:** 4835 words

**Online Supplement:** This paper includes information presented as an online supplement.

**Copyright form disclosures:** Dr. Shepherd disclosed off-label product use (His manuscript discussed the unlicensed use of insulin, oxandrolone, glutamine and beta-blockers to treat ICU acquired weakness. Whilst all of these drugs have licenses, they are not for this indication). Dr. Newman disclosed off-label product use (Discussed in paper). Dr. Brett disclosed off-label product use (Manuscript discusses some substances under investigation. There are no data on which to base a treatment recommendation). Dr. Griffith disclosed off-label product use (Some substances under investigation. There are no data on which to base a treatment recommendation. Several unlicensed drug treatments are discussed in the manuscript but it is clear from the narrative that these are investigational).

1  
2  
3  
4  
5  
6  
7  
8  
9  
10  
11  
12  
13  
14  
15  
16  
17  
18  
19  
20  
21  
22  
23  
24  
25  
26  
27  
28  
29  
30  
31  
32  
33  
34  
35  
36  
37  
38  
39  
40  
41  
42  
43  
44  
45  
46  
47  
48  
49  
50  
51  
52  
53  
54  
55  
56  
57  
58  
59  
60  
61  
62  
63  
64  
65

1 **Abstract**

2  
3  
4 **Objective:** Intensive care unit acquired weakness (ICUAW) is a common complication of  
5  
6  
7  
8  
9  
10  
11  
12  
13  
14  
15  
16  
17  
18  
19  
20  
21  
22  
23  
24  
25  
26  
27  
28  
29  
30  
31  
32  
33  
34  
35  
36  
37  
38  
39  
40  
41  
42  
43  
44  
45  
46  
47  
48  
49  
50  
51  
52  
53  
54  
55  
56  
57  
58  
59  
60  
61  
62  
63  
64  
65

**Data Sources:** We systematically reviewed the published literature relating to pharmacological  
intervention for the treatment and prevention of ICUAW.

**Study Selection:** We searched Medline, Embase, CINAHL+, Web of Science and both US and  
European trial registries up to July 2014 alongside reviews and reference lists from  
populations with no age or language restrictions. We included studies that  
reported a measure of muscle structure or physical function as an outcome  
measure. We estimated pooled odds ratios (OR) and 95% confidence intervals (CI)  
using data extracted from published papers or where available, original data  
provided by the authors. Assessment of bias was performed using the Cochrane  
Collaboration’s risk of bias tool.

**Data Synthesis:** Ten studies met the inclusion criteria. The current body of evidence does not  
support the use of any pharmacological agent in this setting although maintaining  
euglycemia may reduce the incidence of critical illness polyneuropathy.

**Conclusions:** At present no pharmacological intervention can be recommended to prevent or  
treat ICUAW. Further research is required into this field including into more novel  
agents such as myostatin inhibitors. Challenges in the conduct of research in this  
area are highlighted.

**Word Count:** 249

- 1
- 2
- 3
- 4
- 5
- 6
- 7
- 8
- 9
- 10
- 11
- 12
- 13
- 14
- 15
- 16
- 17
- 18
- 19
- 20
- 21
- 22
- 23
- 24
- 25
- 26
- 27
- 28
- 29
- 30
- 31
- 32
- 33
- 34
- 35
- 36
- 37
- 38
- 39
- 40
- 41
- 42
- 43
- 44
- 45
- 46
- 47
- 48
- 49
- 50
- 51
- 52
- 53
- 54
- 55
- 56
- 57
- 58
- 59
- 60
- 61
- 62
- 63
- 64
- 65

## 1 Introduction

2  
3  
4 Patients who survive significant periods of critical illness may suffer long lasting reductions in their  
5  
6 quality of life, much of which can be attributed to muscle weakness (1). Weakness caused by critical  
7  
8 illness is termed 'intensive care unit acquired weakness' (ICUAW) and has been defined by consensus as  
9  
10 'clinically detected weakness in critically ill patients in whom there is no plausible etiology other than  
11  
12 critical illness' (2). It is a common complication which prolongs both hospital and intensive care unit  
13  
14 (ICU) stay and the duration of mechanical ventilation (3).  
15  
16

17  
18  
19 At present, there is an imprecise understanding of the mechanisms of ICUAW. It appears weakness may  
20  
21 result from abnormalities of the peripheral nervous system, peripheral musculature or a combination of  
22  
23 the two (4). Critical illness polyneuropathy (CIP) is a symmetrical condition affecting the limbs,  
24  
25 particularly the lower extremities (4). Weakness is most pronounced in proximal muscles but can involve  
26  
27 the respiratory musculature and impede weaning from mechanical ventilation (5). Proposed  
28  
29 mechanisms of CIP include injury and subsequent degeneration due to microcirculatory dysfunction that  
30  
31 may be aggravated by hyperglycemia, sodium channel inactivation or mitochondrial dysfunction.  
32  
33  
34

35  
36  
37 Mitochondrial dysfunction is also implicated in critical illness polymyopathy (CIM), a primary disease of  
38  
39 muscle which may be clinically indistinguishable from CIP. Histopathology reveals selective loss of thick  
40  
41 filaments in muscle, reflecting a combination of myosin loss and muscle necrosis (6). There is evidence  
42  
43 to suggest overlap between CIP and CIM with CIM carrying a better prognosis (7).  
44  
45  
46

47  
48 Risk factors for ICUAW were recently reviewed (3). Sepsis, inflammation and multiple organ failure all  
49  
50 appear particularly relevant to development of this syndrome, with hyperglycemia likely to be a  
51  
52 significant risk factor for CIP (8). Studies exploring the role of glucocorticoids and neuromuscular  
53  
54 blockers in ICUAW have reported inconsistent results. Inactivity is a possible risk factor but the case for  
55  
56  
57  
58  
59  
60  
61  
62  
63  
64  
65

1 an independent causative effect has not yet been made (7). Despite mechanistic advances, effective  
2 pharmacological treatments are lacking, and treatment is supportive.  
3

4  
5 The primary research question of this study was to ask 'is there any evidence from randomized  
6 controlled trials (RCT) to support the use of any particular pharmacological intervention in the  
7 prevention or treatment of ICUAW?'  
8  
9  
10

## 11 **Materials and Methods**

### 12 **Protocol and registration**

13  
14 This systematic review is reported according to the Preferred Reporting Items for Systematic Reviews  
15 and Meta-Analyses guidelines (9).  
16  
17

### 18 **Eligibility criteria and data sources**

19  
20 Sources included a range of biomedical databases including grey literature sources. We searched  
21 MEDLINE and EMBASE (via OVID), Cochrane, Web of Science, CINAHL+, the European (EUDRACT) and  
22 American ([www.clinicaltrials.gov](http://www.clinicaltrials.gov)) trial registries in July 2014. The search strategies were designed to  
23 identify randomized trials of pharmacological interventions used in critically ill patients (or survivors)  
24 that employed physical function, muscle function, muscle strength, or muscle mass (or equivalent) as  
25 outcome measures. An example of the search strategy used for Medline is included in *the Supplemental*  
26 *Digital Content - Appendix 1*. We screened the reference lists of the included articles for relevant  
27 publications not retrieved in the initial search. All citing articles and related references were also  
28 screened using the Web of Science tool. No language or age restrictions were imposed. Studies  
29 considered were published between 1946 and July Week 4 2014 were included.  
30  
31  
32  
33  
34  
35  
36  
37  
38  
39  
40  
41  
42  
43  
44  
45  
46  
47  
48  
49  
50  
51  
52  
53

### 54 **Study selection and inclusion criteria**

55  
56 Two reviewers (SJS and RN) screened articles at both the title/abstract and full text stages.  
57  
58 Disagreements were resolved by discussion with a third reviewer (DMG) (see *Figure 1*). Randomized and  
59  
60  
61  
62  
63  
64  
65

1 quasi-randomized, comparative interventional studies of intensive care patients or intensive care  
2 survivors were considered. We included studies that reported on a measure of physical function, muscle  
3 strength, muscle bulk or physical mobility. We included both direct (e.g. grip strength) and indirect (e.g.  
4 lean body mass) measures. We also retrieved systematic reviews of such studies. Studies remained in  
5 the review at the title and abstract screening stage if there was not enough information in the title and  
6 abstract on which to exclude them.  
7  
8  
9  
10  
11  
12

### 13 **Data collection process**

14  
15  
16  
17  
18 A dedicated extraction tool was adapted from the Cochrane Collaboration and was used to extract  
19 relevant data; this is included in *Supplementary Digital Content - Appendix 2*. Data extraction was carried  
20 out by a single reviewer (SJS). Only published data were extracted; however, authors were contacted by  
21 e-mail if verification of data was necessary. Where numerical values of mean and standard deviation  
22 results were not supplied within published papers, the author, where available, was contacted by email.  
23  
24  
25  
26  
27  
28  
29  
30  
31 Where the information was still not obtained, enlarged-scale visual estimation was undertaken using  
32 the figures in the published studies (10).  
33  
34  
35

### 36 **Data items**

37  
38  
39 We recorded the study location and the recruitment dates to detect duplicate publications. We  
40 recorded the nature of the intervention including timing, the study setting (e.g. intensive care unit,  
41 hospital ward, or rehabilitation unit), age and outcome measure. Performance of formal meta-analysis  
42 was not carried out due to the heterogeneity of outcome measures and study populations.  
43  
44  
45  
46  
47  
48  
49

### 50 **Risk of bias assessment**

51  
52 Two reviewers (SJS and RN) independently assessed risk of bias in individual studies using the Cochrane  
53 Collaboration Risk of Bias tool (11). Using the tool, risk of bias in key domains was assessed in each study  
54 and given an “low”, “unclear” or “high” risk of bias for each. Disagreements were resolved by discussion  
55  
56  
57  
58  
59  
60  
61  
62  
63  
64  
65



1 with a third reviewer (DMG). Studies were graded as a “low” overall risk of bias where the individual risk  
2 in each domain (sequence generation, allocation concealment, blinding, incomplete outcome data and  
3 selective outcome reporting) was deemed to be low, as “high” where the risk of bias was deemed to be  
4 high in one or more of these domains and similarly “unclear” where the risk was deemed unclear in one  
5 or more of these domains. (11)  
6  
7  
8  
9  
10  
11

## 12 **Secondary Analysis**

13 Due to the low number of papers identified by the primary question of the review, and the lack of any  
14 definitive treatment of any of the therapies tested in these trials, we performed a secondary analysis of  
15 the articles identified in the initial search. During this analysis, all other study designs were included with  
16 the inclusion and exclusion criteria otherwise remaining the same. These additional studies were  
17 analysed using GRADE methodology (12). The purpose of this secondary review was to identify other  
18 treatments that might be considered in the formulation of a trial intervention, even if the level of  
19 evidence was lower than that of the primary review question.  
20  
21  
22  
23  
24  
25  
26  
27  
28  
29  
30  
31  
32  
33  
34

## 35 **Results**

### 36 **Study selection**

37 Full details of the study selection process are shown in *Figure 1*. After de-duplication, 13,057 references  
38 were retrieved. An additional 9 articles were identified from the reference lists of included studies. Full  
39 text articles were retrieved for 51 studies. Thirty-seven were excluded at the full text stage (see *Figure 1*  
40 for reasons). A further 5 trials were excluded as they involved duplicate study populations of other  
41 retrieved publications and one further publication discarded as it was an interval analysis of  
42 subsequently reported trial which had also been retrieved and excluded. Another publication was a  
43 systematic review from which relevant publications were extracted from the reference list (8). The  
44 remaining 10 studies that were eligible were published between 1996 and 2012. Full details including  
45  
46  
47  
48  
49  
50  
51  
52  
53  
54  
55  
56  
57  
58  
59  
60  
61  
62  
63  
64  
65

sample size, duration of follow-up, outcome measure(s) and a synopsis of relevant results are shown in

*Supplementary Digital Content - Table 1*. Interventions were broadly divided into the categories below.

Results are reported as mean (95% confidence intervals) unless otherwise stated.

### *Oxandrolone*

Oxandrolone, an anabolic steroid which promotes growth of muscle mass, has been used in a single trial including 45 patients who had suffered severe thermal injury (13). Participants received nutritional supplementation with or without the addition of oxandrolone 20 mg per day upon admission to a burn rehabilitation unit (13). Oxandrolone was discontinued when at least 80% of the involuntary weight loss that had occurred during the acute burn period had been restored. The primary outcome measure was the rate at which body mass was regained with the percentage of lean body mass a secondary outcome. Patients receiving oxandrolone regained weight faster than those who received nutrition alone with a mean increase of 1.5 (1.38,1.62) vs. 0.7 kg (0.62,0.78) at four weeks,  $p < 0.05$ . Lean body mass at discharge was greater in those who received oxandrolone when measured at discharge from the rehabilitation unit [76 (74.37,77.63) vs. 71% (69.75,72.25) ,  $p < 0.05$ ]. This difference was maintained at six months after discontinuation of oxandrolone. Lost lean mass was not restored in the nutrition alone group by six months; at this time point, the control group had gained on average 4.1 kg (3.57,4.63) from their discharge weight whereas the oxandrolone group had gained an additional 2.8 kg (2.37,3.23). No data was provided on exercise or other rehabilitation undertaken. The overall risk of bias in this study was deemed to be unclear; although a significant clinical effect was reported, missing detail pertaining to most of the important sources of bias make the internal validity of this trial impossible to assess and we were unable to successfully contact the authors concerned.

### *Euglycemia*

As hyperglycemia is thought to be a significant risk factor for CIP, the effect of insulin to maintain euglycemia has been investigated (14). Furthermore, insulin itself has anabolic effects (15). Two trials

1 examining the use of supplemental insulin were included in this review (16, 17). In the first, Mikaeili and  
2 colleagues randomized 40 medical ICU patients to insulin therapy to maintain euglycemia of 80-140  
3 mg/dL vs. a less restrictive regimen to maintain 180-200 mg/dL (17). Their primary outcome measure  
4 was the incidence of CIP as detected by electrophysiological study with the duration of mechanical  
5 ventilation a secondary outcome. Rates of CIP were significantly lower in the euglycemic group [10 (-  
6 3.15,23.15) vs. 45% (23.2,66.8),  $p = 0.01$ ]. The duration of mechanical ventilation was also reduced with  
7 tighter glycemic control [9.72 (8.04-11.4) vs. 14.05 days (10.48,17.62),  $p = 0.04$ ]. The lack of blinding may  
8 have introduced performance bias although investigators blinded to treatment allocation carried out  
9 the outcome assessment.

10 The second study of insulin therapy was performed in 8 patients following major abdominal resection  
11 for cancer (16). Patients received conventional (to maintain levels of 149-200 mg/dL) versus intensive  
12 insulin therapy (to maintain 79-124 mg/dL) on ICU for 24 hours on the first and second days after  
13 elective surgery using a cross over design. All patients received total parenteral nutrition (TPN) from the  
14 first day post-operatively. Their primary outcome measures were the rates of skeletal muscle protein  
15 synthesis and degradation, leucine oxidation, glutamine *de novo* synthesis and dimethylarginine  
16 production. Rates of skeletal muscle protein synthesis were considered relevant to our review. Tighter  
17 glycemic control was associated with greater muscle protein synthesis (as determined by radio-isotope  
18 assay of glutamine uptake and leucine loss) and a less negative nitrogen balance [inferred from  
19 phenylalanine balance -3 (-5.08,-0.92) vs. -11 nmol/100mL/min (-13.08,-8.92),  $p < 0.05$ ]. The clinical  
20 sequelae of these results were not explored and minimal detail was provided regarding the degree of  
21 post-operative organ dysfunction or clinical course, hence the generalizability and utility of this data is  
22 questionable. Rates of hypoglycemia were not reported. As with the previous study, blinding of the  
23 clinical team to the treatment allocation was not possible introducing an unavoidable source of

performance bias. Furthermore, the outcome assessors were also un-blinded, introducing a risk of detection bias. Therefore, whilst interesting, these findings were considered to be at high risk of bias.

### *Growth Hormone*

Anabolic hormone therapy has been utilized in 3 trials comparing treatment with recombinant human growth hormone (rhGH) versus placebo on the intensive care unit including a total of 552 patients (10, 18). One publication included data from two parallel trials (10). In the first trial, a Swedish study, a mean dose of 0.43 IU/kg was given for a period of 12 days to 20 patients who had failed to wean from mechanical ventilation after at least 7 days (18). The primary outcome measure was actually mortality but lean body mass and muscle strength were secondary outcomes considered relevant to our review. Lean body mass increased in the rhGH group [0.8 (-0.38,1.98) vs. -1.1 kg (-2.08,-0.12),  $p < 0.03$ ] but no significant effects were seen on peripheral muscle function assessed by sequential electrical stimulation of adductor pollicis, the cumulative time spent on a mechanical ventilator during the 12 day study period or the rate of weaning (see *Supplementary Digital Content - Table 1* for the relevant summary outcome measures). The article did not include sufficient detail to adequately assess risk of bias.

A subsequent publication described two parallel Finnish and European multi-national trials in which a mean dose of 0.3 IU/kg of rhGH was administered for up to 21 days to patients on ICU after cardiac surgery, abdominal resection, major trauma or in whom there was a diagnosis of Acute Respiratory Distress Syndrome (ARDS) (10). Relevant secondary outcome measures were grip strength, exercise tolerance and self-reported fatigue. Both trials reported a significant excess of in-hospital mortality with the use of rhGH [Finnish trial: 39% versus 20%, relative risk of death 1.9 (1.3,2.9),  $p < 0.001$ ; multi-national trial: 44% versus 18%, relative risk of death 2.4 (1.6,3.5)  $p < 0.001$ ]. Given this strong signal of harm, further analysis of functional improvement was deemed inappropriate.

Gamrin and colleagues randomized 20 critically ill patients on a surgical ICU to treatment with rhGH at 0.3 IU/kg/day or placebo for 5 days after which they measured the fractional synthesis rate of muscle

and performed biopsies of the quadriceps muscle (19). All patients received parenteral nutrition; supplementary enteral nutrition was given in small amounts to 4 patients in the rhGH group and 8 controls. The primary effect variables were the protein content of skeletal muscle (measured as alkali-soluble protein) and the rate of muscle protein synthesis. rhGH was associated with an increased protein content [+207% (-26.92,+440.92),  $p < 0.05$ ] and increased muscle protein synthesis but the variability of response was high. The clinical utility of these observations was also not explored. Overall, the risk of bias was felt to be high in this study; treating clinicians were not blinded although during preparation and analysis, investigators were. Protocol violations also occurred in 3 participants.

### *Propranolol*

Propranolol may attenuate the hypermetabolic state seen in ICU and thus reduce the catabolic response (20). Herndon and colleagues randomized 25 pediatric burn patients to propranolol at a mean dose of  $1.05 \pm \text{S.D. } 0.15 \text{ mg/kg}$  every 4 hours targeting a 20% reduction in heart rate from the average of the preceding day (21). Treatment was initiated 5 days after initial burn excision and continued for a 2 week period. Patients received conventional enteral feeding via naso-duodenal tube. Primary and secondary outcome measures were not specifically stated as thus; however, relevant outcome measures included fat-free (i.e. lean) body mass and fractional synthesis rates of skeletal muscle inferred by phenylalanine uptake. Those receiving propranolol demonstrated less reduction in their lean body mass [-1 (-7.60,+5.60) vs. -9% (-16.43,-1.57),  $p = 0.003$ ], results which were maintained until full healing and discharge from hospital. Propranolol was strongly anabolic and increased the fractional synthetic rate of muscle [0.337 (0.20,0.47) vs. 0.142  $\mu\text{mol}/100 \text{ mL}/\text{min}$  (0.07,0.22),  $p = 0.07$ ]. No patient required a prolonged period of mechanical ventilation in this study and the degree of organ dysfunction was not reported. The risk of bias was judged to be high: only 22/25 patients underwent evaluation of body composition due to technical issues with the scanning equipment over a 3 month period and the radioisotope study of a single patient was excluded from the analysis due to a failed study.

### *Immunoglobulin*

1  
2 Weak evidence has previously suggested that early use of IgM-enriched Immunoglobulin (IVIG) may  
3  
4 prevent CIP and CIM (22). This is based on a possible association of CIPNM with the pro-inflammatory  
5  
6 cytokines released during critical illness, the effect of which may be attenuated by the  
7  
8 immunomodulating properties of IVIG. A single trial examined the use of IVIG on the incidence of both  
9  
10 CIP and CIM (23). Thirty-eight critically ill patients with multiple organ failure (MOF) secondary to  
11  
12 presumed sepsis with early clinical signs of CIP or CIM were included. Patients were randomly assigned  
13  
14 to either IVIG at 0.25g/kg/day or 1% human albumin solution over a period of 3 days. CIP was diagnosed  
15  
16 based upon electrophysiological criteria and CIM histological evaluation. Results were quantified over a  
17  
18 2 week period using a novel summative score that combined data from both of these assessments. No  
19  
20 treatment effect was reported upon any of pre-specified endpoint relevant and the study was  
21  
22 terminated at its first interim analysis due to futility (see *Supplementary Digital Content - Table 1* for  
23  
24 relevant summary measures).  
25  
26  
27  
28  
29  
30  
31

### *Glutamine*

32  
33  
34  
35  
36 Glutamine is the most abundant free amino acid in the body and is normally synthesized and stored in  
37  
38 skeletal muscle, with smaller amounts made by the lungs, liver and brain (24). During sepsis and  
39  
40 catabolic states, increased glutamine demands may be met in part by increasing breakdown of protein  
41  
42 in skeletal muscle but glutamine deficiency can occur (25). Tjader and colleagues randomized 40  
43  
44 critically ill patients with a variety of presentations to glutamine enhanced parenteral nutrition at doses  
45  
46 of 0.00, 0.28, 0.57 or 0.86 g/k/day, corresponding to 0, 20, 40 or 60 g of glutamine per day for a 70 kg  
47  
48 man (26). The primary outcome measures were wet muscle glutamine concentration, protein synthesis  
49  
50 and protein content as alkali-free protein. Protein synthesis rates were determined by phenylalanine  
51  
52 uptake radioisotope study and muscle amino acid content analysed by muscle biopsy after five days. The  
53  
54 treatment successfully normalised plasma glutamine concentration in a dose-dependent way but no  
55  
56  
57  
58  
59  
60  
61  
62  
63  
64  
65

1 significant difference was seen between the muscle glutamine concentrations before and after  
2 treatment for any subgroup (see *Supplementary Digital Content - Table 1*). Protein fractional synthesis  
3 rate did also not differ significantly between any dose-group of glutamine [2.08 (0.81,3.34) vs. 1.95  
4 (1.50,2.40) vs. 1.85 (1.29,2.41) vs. 1.58% (0.69,2.47),  $p > 0.05$  for all]. The risk of bias was deemed to be  
5 high due to incomplete datasets; 37/40 of those randomized completed the full protocol due to clinical  
6 and organisational reasons. Blood and tissue samples were blinded throughout the procedure for  
7 sample analysis, but treatment was not blinded for attending physicians.  
8  
9

### 10 **Risk of bias across studies**

11 Overall, the risk of bias was judged to be high for eight out of the ten included studies (10, 16, 17, 19,  
12 21, 23, 26). For the remaining two trials the risk of bias assessment was unclear (13, 18). A full  
13 description of the the risk of bias assessment is shown in *Table 1*.  
14  
15

### 16 **Secondary analysis of studies not meeting eligibility for primary review**

17 From our secondary analysis, another 18 articles were identified (27-44). One article was excluded as it  
18 described an interim analysis of another included paper (44). Interventions were broadly divided into  
19 exogenous insulin with or without metformin, maintenance of euglycemia, exogenous growth hormone,  
20 insulin-like growth factor and oxandrolone. A summary of the included articles is given in  
21 *Supplementary Digital Content - Table 2*. The GRADE of evidence in the majority of studies was deemed  
22 low (27). Only maintenance of euglycemia demonstrated any significant effects (37, 39, 42). The GRADE  
23 of evidence for these trials was deemed to be moderate.  
24  
25  
26  
27  
28  
29

## 30 **Discussion**

### 31 **Summary of evidence**

1 Our review identified a number of promising treatments but given the current evidence base we are  
2 unable to recommend routine adoption of any particular strategy at this time. The overall risk of bias  
3 within the published evidence and lack of clinical correlates for studies which target surrogate measures  
4 such as lean body mass and protein synthesis are of particular concern. Therefore, at this time, the  
5 evidence does not support the utility of any pharmacological intervention in the treatment or  
6 prevention of ICUAW.  
7

8 Within the setting of general intensive care, only insulin therapy appears to offer any significant  
9 preventative effects upon CIP/CIM although the included trial was small (17). Evidence from sub-  
10 analyses of two larger trials of intensive insulin therapy showed similar benefits but these were not  
11 included in our review as they were not felt to represent randomized controlled trials as only those who  
12 survived to seven days were screened for CIP/CIM by weekly electrophysiological examination (37, 45).  
13 Concerns regarding tight glycaemic control have been raised in the past decade since publication of the  
14 Van den Berghe studies; in these original trials, rates of hypoglycemia were not insignificant, although  
15 morbidity associated with these events low (46, 47). In the Mikaeli study 25% of patients suffered an  
16 episode of hypoglycemia below 45 mg/dL requiring intervention although serious adverse events did  
17 not occur (17). A subsequent multi-centre randomized trial of 6,104 mixed medical and surgical patients  
18 demonstrated increased mortality with this approach, mainly from cardiovascular causes (48). Rates of  
19 hypoglycemia were significantly higher than in either of the Van den Berghe single-centre trials and a  
20 subsequent post-hoc analysis showed that these patients, i.e. those in whom blood sugar was less than  
21 2.2 mmol/L were twice as likely to die (49). Therefore, intensive insulin therapy cannot be routinely  
22 recommended as a strategy to combat weakness amongst critically ill patients. However, more modest  
23 glycaemic targets may be appropriate such as those adopted by Mikaeili and colleagues if adequate  
24 protection against hypoglycemia can be achieved (17). Improvements in technology, in particular  
25  
26  
27  
28  
29  
30  
31  
32  
33  
34  
35  
36  
37  
38  
39  
40  
41  
42  
43  
44  
45  
46  
47  
48  
49  
50  
51  
52  
53  
54  
55  
56  
57  
58  
59  
60  
61  
62  
63  
64  
65



1 continuous glucose monitoring and computer controlled administration of insulin may in the future  
2 allow this to be achieved (50).

3  
4 For patients who have suffered severe thermal injury, oxandrolone appears to offer benefits in recovery  
5 and maintenance of lean body mass (13). Outside of this setting, the benefits are less clear: although not  
6 reporting on our primary outcome measures, a study of trauma patient of oxandrolone 10 mg versus  
7 placebo in combination with enteral nutrition failed to show any improvement in mortality, length of  
8 hospital or ICU stay or duration of mechanical ventilation (51). A similar prospective, double-blind trial in  
9 41 ventilator-dependent surgical patients found that those who received oxandrolone spent longer on a  
10 ventilation (21.7 vs. 16.4 days,  $p = 0.03$ ), had higher rates of re-intubation (44% vs. 13%,  $p = 0.02$ ) and  
11 showed a non-significant trend towards more days in ICU (52). Both trials were small and single centre,  
12 hence further studies would be required to assess effects upon muscle function.

13  
14 Our review suggests that agents such as immunoglobulin and glutamine do not appear to offer benefit  
15 in this setting. It had been postulated that immunoglobulin could have a role in the prevention of  
16 CIP/CIM as this condition has been associated with pro-inflammatory cytokines such as TNF- $\alpha$ , IFN- $\gamma$ , IL-  
17 1, and IL-12 (53). It is believed that IVIG exerts its anti-inflammatory and immunomodulating properties  
18 through regulating such cytokines (23). Glutamine supplementation has been suggested to have a role  
19 in preventing undesired muscle wasting as skeletal muscle is the main producer and exporter of this  
20 amino acid which may be required for proper immune system functioning and subsequent deficiency  
21 during times of physiological stress.

### 22 **Limitations and challenges**

23  
24 A major obstacle to our review was the heterogenous definition of ICUAW. Whilst entities such as CIP  
25 may be defined upon seemingly strict electrophysiological criteria, namely a reduction in the amplitude  
26 of compound muscle action (CMAP) and sensory nerve action potentials (SNAP) with normal or mildly  
27 reduced nerve conduction velocity, a consensus definition is lacking by how much these potentials must  
28

1 be reduced (4). Varying degrees of fibrillation potentials and positive sharp waves can be recorded in  
2 both CIP and CIM and motor unit potentials may be unrecordable if consciousness is depressed;  
3  
4 however, if present, they can be normal or myopathic, therefore the distinction between CIM and CIP is  
5  
6 not absolute (54). Mikaeili and colleagues used a 10% reduction in CMAP/SNAP amplitude but more  
7  
8 precise definitions are lacking (17).  
9  
10

11  
12 Our search strategy deliberately used broadly defined outcome measures so as to offer a more  
13  
14 comprehensive review of current evidence. A significant limitation concerns the use of surrogate  
15  
16 outcome measures, such as lean body mass or muscle bulk to infer functional improvement. This is  
17  
18 clearly a large assumption. Nevertheless, trials targeting 'harder' functional outcomes are lacking  
19  
20  
21 outside of insulin therapy, the caveats to which have been discussed above.  
22  
23

24  
25 A further challenge comes from competing risk; these are events which prevent or significantly alter the  
26  
27 probability a subject will experience a particular outcome (55). Mortality in ICU studies is high, hence  
28  
29 death from other causes may preclude the observation of outcomes such as muscle weakness, leading  
30  
31 to inaccurate estimations of effect. This is particularly problematic where interventions affect both  
32  
33 competing risk and the measured outcome, such as hyperglycemia as seen in the large glycemic control  
34  
35 trials (46-48). Composite outcome measures can be used to account for competing risks but the  
36  
37 relative contributions of each component cannot be determined (56). A more satisfactory approach  
38  
39 which is infrequently employed in ICU studies is to use statistical adjustment, such as multi-state  
40  
41 modelling (57). In our review, the most promising therapy is euglycemia; however, in a large studies  
42  
43 (albeit one which did not not meeting the inclusion criteria for our primary analysis), ICU mortality rates  
44  
45 of 21% and 12% in the intervention and control groups respectively represent competing risks not taken  
46  
47 into account in the analysis (37). The effects on this therapy upon the incidence of CIP/CIN may  
48  
49 therefore be overestimated.  
50  
51  
52  
53  
54  
55  
56  
57

## 58 **Avenues for Future Research**

59  
60  
61  
62  
63  
64  
65

1 Whilst experimental work is ongoing into strategies to cope with ICUAW, functional decline and loss of  
2 strength are not unique to critical illness and may be an inevitable consequence of growing old.  
3

4 Pharmacological treatments which have been trialed in the setting of age-related sarcopenia are similar  
5 to those trialed in critical illness and include the administration of testosterone, growth hormone and  
6  
7 supplementation of vitamin D (58-61). Results to date have been disappointing and largely reflect the  
8  
9 evidence we have discussed in this review, in that whilst improvements in markers such as lean body  
10  
11 mass may be seen, these do not translate into improvements in function and any benefit may be  
12  
13 severely limited by serious side effects, particularly for rhGH.  
14  
15

16 A number of more novel approaches may be of interest. Myostatin is an endogenous, TGF- $\beta$  family  
17  
18 member which functions as an endogenous inhibitor of muscle growth in diverse species including  
19  
20 humans (62). The myostatin gene is expressed almost exclusively in skeletal muscle cells of skeletal  
21  
22 muscle embryonic development as well as in adult animals (63). In adult animals, myostatin appears to  
23  
24 inhibit the activation and differentiation of satellite cells, resident stem cells in skeletal muscle that are  
25  
26 critical to muscle regeneration (63). Targeted disruption of the myostatin gene in mice leads to muscle  
27  
28 hypertrophy and hyperplasia, approximately doubling of muscle mass (64). The function of myostatin as  
29  
30 a negative regulator of muscle growth was recently shown to be conserved in humans (65). Selective  
31  
32 inhibition of this moiety may have broad clinical utility for a variety of muscle disorders including  
33  
34 weakness associated with critical illness. The role of myostatin in the development of critical illness  
35  
36 weakness is currently being investigated ([clinicaltrials.gov](https://clinicaltrials.gov) reference NCT01321320). Other approaches  
37  
38 including IL-6 antagonism and administration of synthetic ghrelin have also been promising in animal  
39  
40 models of cachexia (66). A definitive answer on these molecules may well be with us in the next decade.  
41  
42 As well as focusing upon which pharmacological agent to test, careful consideration must be given to  
43  
44 study design. We urgently require consensus as to which physical outcome variables are best utilised in  
45  
46 assessing weakness in ICU survivors as these vary enormously. Competing risks should also be identified  
47  
48  
49  
50  
51  
52  
53  
54  
55  
56  
57  
58  
59  
60  
61  
62  
63  
64  
65

1 and planned for. Qualifying which interventions were delivered at each stage of the ICU survivor's  
2 journey (i.e. during ICU, between ICU and hospital discharge and after hospital discharge) and agreeing  
3 on taxonomy will allow us to assess optimal timing in addition to optimal agent. Finally, consideration  
4 needs be given how best to account for pre-existing physical decline. It is plausible those with  
5 considerable neuromuscular dysfunction (whether pathological or 'functional') prior to the development  
6 of critical illness will have poorer outcomes than those without; future studies should identify and  
7 account for this in their design.  
8  
9

## 10 **Conclusions**

11 To date, only intensive insulin therapy has been shown to positively affect the incidence of critical illness  
12 acquired weakness; however, this cannot be routinely recommended due to the significant risk of  
13 adverse effects, particularly hypoglycemia. Clinicians should be aware that the current body of evidence  
14 points to a detrimental impact of uncontrolled hyperglycemia in critically ill adults and that avoidance of  
15 hyperglycemia may have an important impact on reducing the incidence of ICUAW but with the risk of  
16 hypoglycemia remains high. Further large-scale investigation into the safe provision of more moderate  
17 glycemic targets is warranted. Whilst novel agents show promise in small observational studies, it is  
18 important that key methodological challenges are addressed. Similarly, clinicians interpreting new  
19 studies in this area must remain mindful of these key challenges in mind when appraising new research.  
20  
21  
22  
23  
24  
25  
26  
27  
28  
29  
30  
31  
32  
33  
34  
35  
36  
37  
38  
39  
40  
41  
42  
43

## 44 **Acknowledgments**

45 This work has been conducted on behalf of Simon Baudouin, Danielle Bear, Bronagh Blackwood,  
46 Stephen Bonner, Stephen Brett, Bronwen Connolly, Rebecca Cusak, Abdel Douiri, Mark Foster, David  
47 Griffith, Michael Grocott, Nicholas Hart, Robert Hatch, Sallie Lamb, Nazir Lone, Danny McAuley, Kathryn  
48 McDowall, Judith Merriweather, Brenda O'Neill, David Parkin, Natalie Pattison, Laura Price, Stephen  
49 Shepherd, Lisa Salisbury, Dorothy Wade and Timothy Walsh of the Enhancing Rehabilitation after Critical  
50 Illness Programme trial steering group. This work is supported (SJB) by the National Institute for Health  
51  
52  
53  
54  
55  
56  
57  
58  
59  
60  
61  
62  
63  
64  
65

1 Research (NIHR) Comprehensive Biomedical Research Centre at Imperial College Healthcare NHS Trust  
2 and Imperial College London. The views expressed are those of the authors and not necessarily the NIHR  
3  
4  
5 or the UK Department of Health.  
6  
7  
8

9 **Declaration of interests**

10  
11 All authors declare that there is no conflict of interest that could be perceived as prejudicing the  
12  
13  
14 impartiality of the paper.  
15  
16  
17  
18  
19  
20  
21  
22  
23  
24  
25  
26  
27  
28  
29  
30  
31  
32  
33  
34  
35  
36  
37  
38  
39  
40  
41  
42  
43  
44  
45  
46  
47  
48  
49  
50  
51  
52  
53  
54  
55  
56  
57  
58  
59  
60  
61  
62  
63  
64  
65

1 **Legends - Main Manuscript**

2  
3  
4 Table 1: Assessment of bias risk

5  
6 Figure 1: Flow chart of study assessment process

7  
8  
9  
10 **Legends - Supplementary Digital Content**

11  
12 Table 1: PICOS table of studies included in primary analysis

13  
14 Table 2: PICOS summary table of potentially interesting studies not included in the systematic review

15  
16  
17 Appendix 1: Search strategy employed for Medline

18  
19  
20 Appendix 2: Data extraction form

## References

1. Herridge MS, Tansey CM, Matte A, et al. Functional disability 5 years after acute respiratory distress syndrome. *The New England journal of medicine* 2011;364(14):1293-1304.
2. Stevens RD, Marshall SA, Cornblath DR, et al. A framework for diagnosing and classifying intensive care unit-acquired weakness. *Critical care medicine* 2009;37(10 Suppl):S299-308.
3. Kress JP, Hall JB. ICU-acquired weakness and recovery from critical illness. *The New England journal of medicine* 2014;371(3):287-288.
4. Latronico N, Bolton CF. Critical illness polyneuropathy and myopathy: a major cause of muscle weakness and paralysis. *The Lancet Neurology* 2011;10(10):931-941.
5. Hadley JS, Hinds CJ. Anabolic strategies in critical illness. *Current opinion in pharmacology* 2002;2(6):700-707.
6. Derde S, Hermans G, Derese I, et al. Muscle atrophy and preferential loss of myosin in prolonged critically ill patients. *Critical care medicine* 2012;40(1):79-89.
7. Latronico N. Neuromuscular alterations in the critically ill patient: critical illness myopathy, critical illness neuropathy, or both? *Intensive care medicine* 2003;29(9):1411-1413.
8. Hermans G, De Jonghe B, Bruyninckx F, et al. Interventions for preventing critical illness polyneuropathy and critical illness myopathy. *The Cochrane database of systematic reviews* 2009(1):CD006832.
9. Welch V, Petticrew M, Tugwell P, et al. PRISMA-Equity 2012 extension: reporting guidelines for systematic reviews with a focus on health equity. *PLoS Med* 2012;9(10):e1001333.
10. Takala J, Ruokonen E, Webster NR, et al. Increased Mortality Associated with Growth Hormone Treatment in Critically Ill Adults. *New England Journal of Medicine* 1999;341(11):785-792.
11. Likis FE, Andrews JC, Fonnesebeck CJ, et al. *Cochrane Risk of Bias Tool*. 2014.

12. Guyatt GH, Oxman AD, Vist GE, et al. GRADE: an emerging consensus on rating quality of evidence and strength of recommendations. *BMJ* 2008;336(7650):924-926.
13. Demling RH, DeSanti L. Oxandrolone induced lean mass gain during recovery from severe burns is maintained after discontinuation of the anabolic steroid. *Burns : journal of the International Society for Burn Injuries* 2003;29(8):793-797.
14. Callahan LA, Supinski GS. Hyperglycemia and acquired weakness in critically ill patients: potential mechanisms. *Critical care* 2009;13(2):125.
15. Dimitriadis G, Mitrou P, Lambadiari V, et al. Insulin effects in muscle and adipose tissue. *Diabetes Res Clin Pract* 2011;93 Suppl 1:S52-59.
16. Biolo G, De Cicco M, Lorenzon S, et al. Treating hyperglycemia improves skeletal muscle protein metabolism in cancer patients after major surgery. *Critical care medicine* 2008;36(6):1768-1775.
17. Mikaeili H, Yazdchi M, Barazandeh F, et al. Euglycemic state reduces the incidence of critical illness polyneuropathy and duration of ventilator dependency in medical intensive care unit. *Bratislavské lekarske listy* 2012;113(10):616-619.
18. Pichard C, Kyle U, Chevrolet JC, et al. Lack of effects of recombinant growth hormone on muscle function in patients requiring prolonged mechanical ventilation: a prospective, randomized, controlled study. *Crit Care Med* 1996;24(3):403-413.
19. Gamrin L, Essen P, Hultman E, et al. Protein-sparing effect in skeletal muscle of growth hormone treatment in critically ill patients. *Ann Surg* 2000;231(4):577-586.
20. Norbury W. Propranolol attenuates factors affecting hypermetabolism in pediatric burn patients. In: *Critical care (London, England)*; 2007. p. P152 (abstract number).
21. Herndon DN, Hart DW, Wolf SE, et al. Reversal of catabolism by beta-blockade after severe burns. *The New England journal of medicine* 2001;345(17):1223-1229.



- 1  
2  
3  
4  
5  
6  
7  
8  
9  
10  
11  
12  
13  
14  
15  
16  
17  
18  
19  
20  
21  
22  
23  
24  
25  
26  
27  
28  
29  
30  
31  
32  
33  
34  
35  
36  
37  
38  
39  
40  
41  
42  
43  
44  
45  
46  
47  
48  
49  
50  
51  
52  
53  
54  
55  
56  
57  
58  
59  
60  
61  
62  
63  
64  
65
22. Mohr M, Englisch L, Roth A, et al. Effects of early treatment with immunoglobulin on critical illness polyneuropathy following multiple organ failure and gram-negative sepsis. *Intensive care medicine* 1997;23(11):1144-1149.
  23. Brunner R, Rinner W, Kitzberger R, et al. Early treatment with intravenous immunoglobulins in patients with critical illness polyneuropathy: A randomized controlled, doubleblinded study. 2012 [cited 16 (Brunner, Rinner, Kitzberger, Sycha, Warszawska, Holzinger, Madl) Medical University of Vienna, Austria][S111]. Available from: <http://ovidsp.ovid.com/ovidweb.cgi?T=JSPAGE=referenceD=emed10NEWS=NAN=70735247>
  24. Bollhalder L, Pfeil AM, Tomonaga Y, et al. A systematic literature review and meta-analysis of randomized clinical trials of parenteral glutamine supplementation. *Clin Nutr* 2013;32(2):213-223.
  25. van Zanten AR. Glutamine and antioxidants: status of their use in critical illness. *Current opinion in clinical nutrition and metabolic care* 2015;18(2):179-186.
  26. Tjader I, Rooyackers O, Forsberg A-M, et al. Effects on skeletal muscle of intravenous glutamine supplementation to ICU patients. *Intensive care medicine* 2004;30(2):266-275.
  27. Sakurai Y, Aarsland A, Herndon DN, et al. Stimulation of muscle protein synthesis by long-term insulin infusion in severely burned patients. 1995 [cited 222 (Sakurai, Aarsland, Herndon, Chinkes, Pierre, Nguyen, Patterson, Wolfe, Brennan, Pruitt Jr., Abumrad, Fischer, Bessey, Cioffi) Metabolism Unit, Shriners Burns Institute, 815 Market Street, Galveston, TX 77555-1220, United States]; 3:[283-297]. Available from: <http://ovidsp.ovid.com/ovidweb.cgi?T=JS&PAGE=reference&D=emed3&NEWS=N&AN=1995285442>
  28. Debroy MA, Wolf SE, Zhang XJ, et al. Anabolic effects of insulin-like growth factor in combination with insulin-like growth factor binding protein-3 in severely burned adults. *The Journal of trauma* 1999;47(5):904-901.

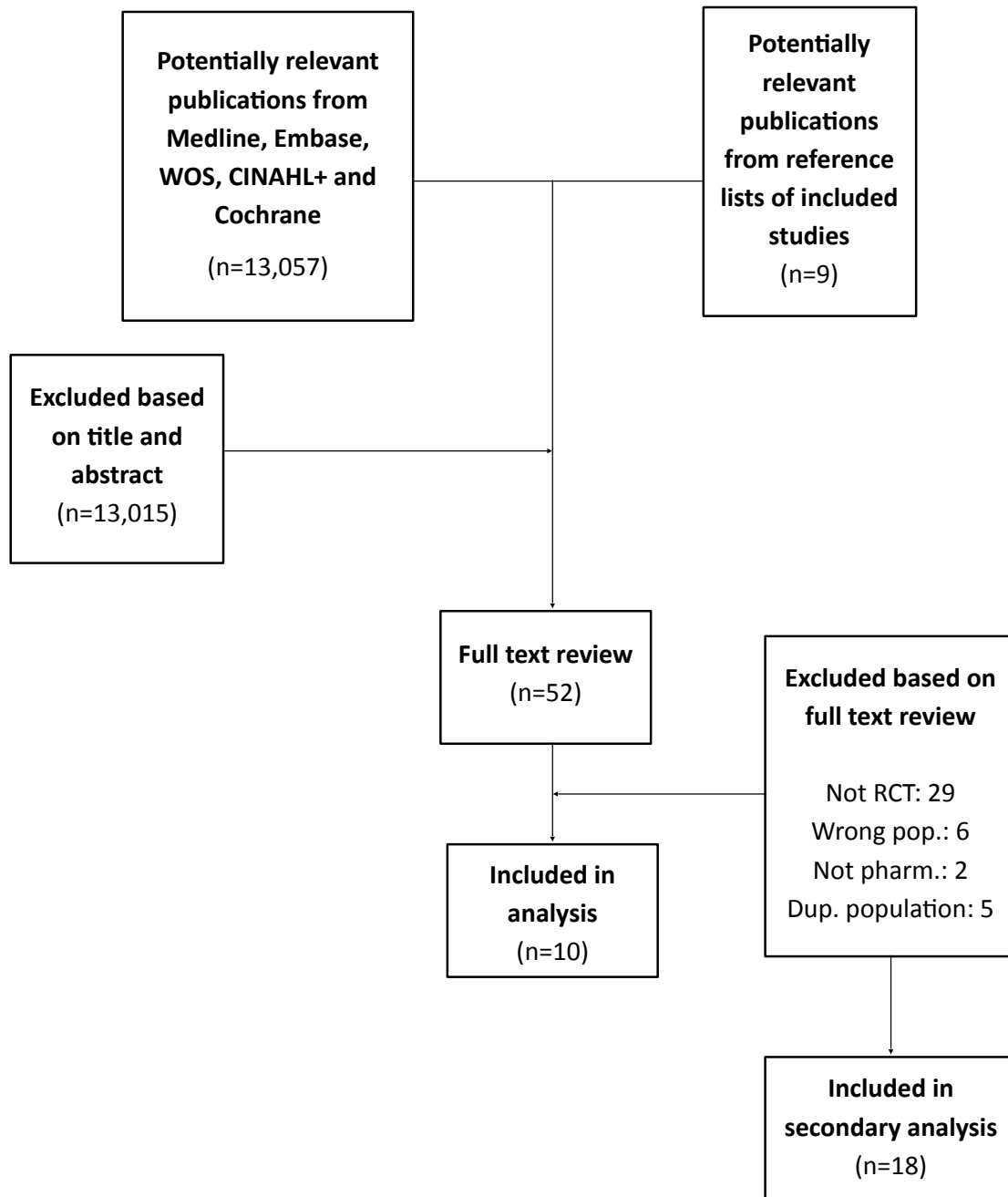
- 1  
2  
3  
4  
5  
6  
7  
8  
9  
10  
11  
12  
13  
14  
15  
16  
17  
18  
19  
20  
21  
22  
23  
24  
25  
26  
27  
28  
29  
30  
31  
32  
33  
34  
35  
36  
37  
38  
39  
40  
41  
42  
43  
44  
45  
46  
47  
48  
49  
50  
51  
52  
53  
54  
55  
56  
57  
58  
59  
60  
61  
62  
63  
64  
65
29. Ferrando AA, Chinkes DL, Wolf SE, et al. A submaximal dose of insulin promotes net skeletal muscle protein synthesis in patients with severe burns. *Annals of surgery* 1999;229(1):11-18.
  30. Hart DW, Herndon DN, Klein G, et al. Attenuation of posttraumatic muscle catabolism and osteopenia by long-term growth hormone therapy. In: *Annals of surgery*; 2001. p. 827-834.
  31. Hart DW, Wolf SE, Ramzy PI, et al. Anabolic effects of oxandrolone after severe burn. 2001 [cited 233 (Hart, Wolf, Ramzy, Chinkes, Beauford, Ferrando, Wolfe, Herndon) Shriners Hospitals for Children, 815 Market St., Galveston, TX 77550, United States]; 4:[556-564]. Available from: <http://ovidsp.ovid.com/ovidweb.cgi?T=JS&PAGE=reference&D=emed5&NEWS=N&AN=2001113998>
  32. Demling RH, DeSanti L. Restoration of body weight, function, and wound healing after severe burns using the anabolic agent oxandrolone is not age dependent. *Ostomy Wound Management* 2002;48(8):42-47.
  33. Hart DW, Wolf SE, Chinkes DL, et al. beta-blockade and growth hormone after burn. *Annals of Surgery* 2002;236(4):450-457.
  34. Suman OE, Thomas SJ, Wilkins JP, et al. Effect of exogenous growth hormone and exercise on lean mass and muscle function in children with burns. *Journal of applied physiology (Bethesda, Md : 1985)* 2003;94(6):2273-2281.
  35. Wolf SE, Thomas SJ, Dasu MR, et al. Improved net protein balance, lean mass, and gene expression changes with oxandrolone treatment in the severely burned. *Annals of surgery* 2003;237(6):801-801.
  36. Gore DC, Herndon DN, Wolfe RR, et al. Comparison of peripheral metabolic effects of insulin and metformin following severe burn injury. 2005 [cited 59 (Gore, Herndon, Wolfe) Department of Surgery, University of Texas Medical Branch, Galveston, TX 77555, United States]; 2:[316-323]. Available from: <http://ovidsp.ovid.com/ovidweb.cgi?T=JS&PAGE=reference&D=emed7&NEWS=N&AN=2005520777>

- 1  
2  
3  
4  
5  
6  
7  
8  
9  
10  
11  
12  
13  
14  
15  
16  
17  
18  
19  
20  
21  
22  
23  
24  
25  
26  
27  
28  
29  
30  
31  
32  
33  
34  
35  
36  
37  
38  
39  
40  
41  
42  
43  
44  
45  
46  
47  
48  
49  
50  
51  
52  
53  
54  
55  
56  
57  
58  
59  
60  
61  
62  
63  
64  
65
37. Van den Berghe G, Schoonheydt K, Beex P, et al. Insulin therapy protects the central and peripheral nervous system of intensive care patients. *Neurology* 2005;64(8):1348-1353.
  38. Przkora R, Herndon DN, Suman OE, et al. Beneficial effects of extended growth hormone treatment after hospital discharge in pediatric burn patients. *Annals of Surgery* 2006;243(6):796-803.
  39. Hermans G, Wilmer A, Meersseman W, et al. Impact of intensive insulin therapy on neuromuscular complications and ventilator dependency in the medical intensive care unit. In: *American journal of respiratory and critical care medicine*; 2007. p. 480-489.
  40. Przkora R, Herndon DN, Suman OE. The effects of oxandrolone and exercise on muscle mass and function in children with severe burns. 2007 [cited 119 (Suman) Children's Wellness and Exercise Center, Shriners Hospitals for Children, 815 Market St, Galveston, TX 77550, United States]; 1:[e109-e116]. Available from: <http://pediatrics.aappublications.org/cgi/reprint/119/1/e109>  
<http://ovidsp.ovid.com/ovidweb.cgi?T=JS&PAGE=reference&D=emed8&NEWS=N&AN=2007129906>
  41. Branski LK, Herndon DN, Barrow RE, et al. Randomized controlled trial to determine the efficacy of long-term growth hormone treatment in severely burned children. *Ann Surg* 2009;250(4):514-523.
  42. Hermans G, Schrooten M, Van Damme P, et al. Benefits of intensive insulin therapy on neuromuscular complications in routine daily critical care practice: a retrospective study. *Critical care (London, England)* 2009;13(1):R5.
  43. Tuvdendorj D, Chinkes DL, Zhang X-J, et al. Long-term oxandrolone treatment increases muscle protein net deposition via improving amino acid utilization in pediatric patients 6 months after burn injury. *Surgery* 2011;149(5):645-653.
  44. Porro LJ, Herndon DN, Rodriguez NA, et al. Five-year outcomes after oxandrolone administration in severely burned children: a randomized clinical trial of safety and efficacy. *Journal of the American College of Surgeons* 2012;214(4):489-502; discussion 502-484.

- 1  
2  
3  
4  
5  
6  
7  
8  
9  
10  
11  
12  
13  
14  
15  
16  
17  
18  
19  
20  
21  
22  
23  
24  
25  
26  
27  
28  
29  
30  
31  
32  
33  
34  
35  
36  
37  
38  
39  
40  
41  
42  
43  
44  
45  
46  
47  
48  
49  
50  
51  
52  
53  
54  
55  
56  
57  
58  
59  
60  
61  
62  
63  
64  
65
45. Hermans G, Wilmer A, Meersseman W, et al. Impact of intensive insulin therapy on neuromuscular complications and ventilator dependency in the medical intensive care unit. *Am J Respir Crit Care Med* 2007;175(5):480-489.
46. van den Berghe G, Wouters P, Weekers F, et al. Intensive insulin therapy in critically ill patients. *The New England journal of medicine* 2001;345(19):1359-1367.
47. Van den Berghe G, Wilmer A, Hermans G, et al. Intensive insulin therapy in the medical ICU. *The New England journal of medicine* 2006;354(5):449-461.
48. Investigators N-SS, Finfer S, Chittock DR, et al. Intensive versus conventional glucose control in critically ill patients. *The New England journal of medicine* 2009;360(13):1283-1297.
49. Investigators N-SS, Finfer S, Liu B, et al. Hypoglycemia and risk of death in critically ill patients. *The New England journal of medicine* 2012;367(12):1108-1118.
50. Wernerman J, Desai T, Finfer S, et al. Continuous glucose control in the ICU: report of a 2013 round table meeting. *Critical care* 2014;18(3):226.
51. Gervasio JM, Dickerson RN, Swearingen J, et al. Oxandrolone in trauma patients. *Pharmacotherapy* 2000;20(11):1328-1334.
52. Bulger EM, Jurkovich GJ, Farver CL, et al. Oxandrolone does not improve outcome of ventilator dependent surgical patients. *Ann Surg* 2004;240(3):472-478; discussion 478-480.
53. De Letter MA, van Doorn PA, Savelkoul HF, et al. Critical illness polyneuropathy and myopathy (CIPNM): evidence for local immune activation by cytokine-expression in the muscle tissue. *J Neuroimmunol* 2000;106(1-2):206-213.
54. Bolton CF. Neuromuscular manifestations of critical illness. *Muscle Nerve* 2005;32(2):140-163.
55. Berry SD, Ngo L, Samelson EJ, et al. Competing risk of death: an important consideration in studies of older adults. *Journal of the American Geriatrics Society* 2010;58(4):783-787.

- 1  
2  
3  
4  
5 56. Wolbers M, Koller MT, Stel VS, et al. Competing risks analyses: objectives and approaches. *Eur Heart*  
6  
7  
8  
9  
10  
11  
12  
13  
14  
15  
16  
17  
18  
19  
20  
21  
22  
23  
24  
25  
26  
27  
28  
29  
30  
31  
32  
33  
34  
35  
36  
37  
38  
39  
40  
41  
42  
43  
44  
45  
46  
47  
48  
49  
50  
51  
52  
53  
54  
55  
56  
57  
58  
59  
60  
61  
62  
63  
64  
65
57. Putter H, Fiocco M, Geskus RB. Tutorial in biostatistics: competing risks and multi-state models. *Stat*  
*Med* 2007;26(11):2389-2430.
58. Hinds CJ. Administration of growth hormone to catabolic patients. *Growth Hormone & Igf Research*  
1999;9:71-75.
59. Ferrando AA, Sheffield-Moore M, Yeckel CW, et al. Testosterone administration to older men  
improves muscle function: molecular and physiological mechanisms. *American journal of physiology*  
*Endocrinology and metabolism* 2002;282(3):E601-607.
60. Latham NK, Anderson CS, Reid IR. Effects of vitamin D supplementation on strength, physical  
performance, and falls in older persons: a systematic review. *Journal of the American Geriatrics*  
*Society* 2003;51(9):1219-1226.
61. Malafarina V, Uriz-Otano F, Iniesta R, et al. Sarcopenia in the elderly: diagnosis, physiopathology and  
treatment. *Maturitas* 2012;71(2):109-114.
62. Wagner KR. Muscle regeneration through myostatin inhibition. *Curr Opin Rheumatol* 2005;17(6):720-  
724.
63. Bo Li Z, Zhang J, Wagner KR. Inhibition of myostatin reverses muscle fibrosis through apoptosis.  
*Journal of cell science* 2012;125(Pt 17):3957-3965.
64. Lee SJ, McPherron AC. Myostatin and the control of skeletal muscle mass. *Current opinion in genetics*  
& development 1999;9(5):604-607.
65. Schuelke M, Wagner KR, Stolz LE, et al. Myostatin mutation associated with gross muscle hypertrophy  
in a child. *The New England journal of medicine* 2004;350(26):2682-2688.
66. Berardi E, Annibali D, Cassano M, et al. Molecular and cell-based therapies for muscle degenerations:  
a road under construction. *Frontiers in physiology* 2014;5:119.

Figure 1 flowchart



**Table 2:** Assessment of bias risk

Reference	Year	No.	Random sequence generation	Allocation concealment	Blinding of participants and personnel	Blinding of outcome assessment	Incomplete outcome data	Selective reporting	Overall risk of bias
			Selection	Performance	Detection	Attrition	Reporting		
Biolo	2008	16	Unclear	Unclear	High	High	Low	Low	High
Brunner	2012	23	Low	Low	Low	Low	High	Low	High
Demling	2003	13	Unclear	Unclear	Unclear	Unclear	Low	Low	Unclear
Gamrin	2000	19	Unclear	Low	High	Low	High	Low	High
Herndon	2001	21	Low	Unclear	Low	Unclear	High	Low	High
Mikaeili	2012	17	Unclear	Unclear	High	Low	Low	Low	High
Pichard	1996	18	Unclear	Unclear	Low	Unclear	Low	Low	Unclear
Takala - 1	1999	10	Unclear	Unclear	Unclear	Unclear	High	Low	High
Takala - 2	1999	10	Unclear	Unclear	Unclear	Unclear	Unclear	Low	High
Tjader	2004	26	Unclear	Low	High	Low	High	Low	High

Supplemental Digital Content - Table 1

[Click here to download Supplemental Data File \(.doc, .tif, pdf, etc.\): SDC Table 1.docx](#)





Supplemental Digital Content - Appendix 1

[Click here to download Supplemental Data File \(.doc, .tif, pdf, etc.\): SDC Appendix 1.docx](#)

Supplemental Digital Content - Appendix 2

[Click here to download Supplemental Data File \(.doc, .tif, pdf, etc.\): SDC Appendix 2.docx](#)