



THE UNIVERSITY *of* EDINBURGH

Edinburgh Research Explorer

Baseline characteristics, analysis plan and report on feasibility for the Prevention Of Decline in Cognition After Stroke Trial (PODCAST)

Citation for published version:

Scutt, P, Daniel, B, Krishnan, K, Ballard, C, Burns, A, Ford, GA, Mant, J, Passmore, PA, Pocock, SJ, Reckless, J, Sprigg, N, Stewart, R, Wardlaw, J & Bath, PMW 2015, 'Baseline characteristics, analysis plan and report on feasibility for the Prevention Of Decline in Cognition After Stroke Trial (PODCAST)', *Trials*, vol. 16, pp. 509. <https://doi.org/10.1186/s13063-015-1033-2>

Digital Object Identifier (DOI):

[10.1186/s13063-015-1033-2](https://doi.org/10.1186/s13063-015-1033-2)

Link:

[Link to publication record in Edinburgh Research Explorer](#)

Document Version:

Publisher's PDF, also known as Version of record

Published In:

Trials

Publisher Rights Statement:

© 2015 Scutt et al. Open Access This article is distributed under the terms of the Creative Commons Attribution 4.0 International License (<http://creativecommons.org/licenses/by/4.0/>), which permits unrestricted use, distribution, and reproduction in any medium, provided you give appropriate credit to the original author(s) and the source, provide a link to the Creative Commons license, and indicate if changes were made. The Creative Commons Public Domain Dedication waiver (<http://creativecommons.org/publicdomain/zero/1.0/>) applies to the data made available in this article, unless otherwise stated

General rights

Copyright for the publications made accessible via the Edinburgh Research Explorer is retained by the author(s) and / or other copyright owners and it is a condition of accessing these publications that users recognise and abide by the legal requirements associated with these rights.

Take down policy

The University of Edinburgh has made every reasonable effort to ensure that Edinburgh Research Explorer content complies with UK legislation. If you believe that the public display of this file breaches copyright please contact openaccess@ed.ac.uk providing details, and we will remove access to the work immediately and investigate your claim.



RESEARCH

Open Access



Baseline characteristics, analysis plan and report on feasibility for the Prevention Of Decline in Cognition After Stroke Trial (PODCAST)

Polly Scutt^{1†}, Dan Blackburn^{2†}, Kailash Krishnan¹, Clive Ballard³, Alistair Burns⁴, Gary A. Ford⁵, Jonathan Mant⁶, Peter Passmore⁷, Stuart Pocock⁸, John Reckless⁹, Nikola Sprigg¹, Rob Stewart¹⁰, Joanna M. Wardlaw¹¹ and Philip M. Bath^{1*}

Abstract

Background: A common complication after stroke is development of cognitive impairment and dementia. However, effective strategies for reducing the risk of developing these problems remain undefined. Potential strategies include intensive lowering of blood pressure (BP) and/or lipids. This paper summarises the baseline characteristics, statistical analysis plan and feasibility of a randomised control trial of blood pressure and lipid lowering in patients post-stroke with the primary objective of reducing cognitive impairment and dementia.

Methods: The Prevention Of Decline in Cognition After Stroke Trial (PODCAST) was a multi-centre prospective randomised open-label blinded-endpoint controlled partial-factorial internal pilot trial running in secondary and primary care. Participants without dementia were enrolled 3–7 months post ischaemic stroke or spontaneous intracerebral haemorrhage, and randomised to intensive versus guideline BP lowering (target systolic BP <125 mmHg versus <140 mmHg); patients with ischaemic stroke were also randomised to intensive or guideline lipid lowering (target LDL cholesterol <1.4 mmol/L versus <3 mmol/L). The primary outcome was the Addenbrooke's Cognitive Examination-Revised; a key secondary outcome was to assess feasibility of performing a large trial of one or both interventions. Data are number (%) or mean (standard deviation). The trial was planned to last for 8 years with follow-up between 1 and 8 years. The plan for reporting the main results is included as Additional file 2.

Results: 83 patients (of a planned 600) were recruited from 19 UK sites between 7 October 2010 and 31 January 2014. Delays, due to difficulties in the provision of excess treatment costs and to complexity of follow-up, led to few centres taking part and a much lower recruitment rate than planned. Patient characteristics at baseline were: age 74 (SD 7) years, male 64 (77 %), index stroke ischaemic 77 (93 %), stroke onset to randomisation 4.5 [SD 1.3] months, Addenbrooke's Cognitive Examination-Revised 86 (of 100, SD 8), Montreal Cognitive Assessment 24 (of 30, SD 3), BP 147/82 (SD 19/11) mmHg, total cholesterol 4.0 (SD 0.8) mmol/L and LDL cholesterol 2.0 (SD 0.7) mmol/L, modified Rankin Scale 1.1 (SD 0.8).

Conclusion: Limited recruitment suggests that a large trial is not feasible using the current protocol. The effects of the interventions on BP, lipids, and cognition will be reported in the main publication.

Trial registration: ISRCTN85562386 registered on 23 September 2009

* Correspondence: philip.bath@nottingham.ac.uk

†Equal contributors

¹Stroke Trials Unit, Division of Clinical Neuroscience, University of Nottingham, City Hospital campus, Hucknall Road, Nottingham NG5 1 PB, UK
Full list of author information is available at the end of the article

Background

Post-stroke cognitive decline and dementia are common, and potentially devastating for both patients and carers. Although lowering blood pressure (BP) and lipids and the use of antithrombotic therapy are known to reduce recurrence after ischaemic stroke [1–6], the effect of these and other interventions on cognition is unclear [7]. The trial designated Prevention Of Decline in Cognition After Stroke Trial (PODCAST) was designed to assess the safety and tolerability of intensive versus guideline BP and lipid lowering in ischaemic stroke and intensive BP versus guideline in haemorrhagic stroke and the feasibility of performing a large trial on whether intensive treatment reduces cognitive decline and dementia post stroke (Protocol, Additional file 1) [8].

Aims

Start-up phase

- To determine the initial safety and the tolerability of intensive versus guideline BP and lipid lowering therapy.
- To determine the feasibility of recruiting and retaining sites and participants in a long-term dementia prevention trial involving patients with a previous stroke.
- To determine the feasibility of reaching and maintaining target BP and lipid levels and identify any barriers to achieving and maintaining BP and lipid targets.
- To determine the feasibility of performing recurrent cognitive assessment in clinic and by telephone.

Main phase

- To determine if ‘intensive’ blood pressure lowering therapy and/or ‘intensive’ lipid lowering therapy after stroke reduces cognitive decline and dementia.
- To determine if ‘intensive’ blood pressure lowering therapy and/or ‘intensive’ lipid lowering therapy after stroke reduces poor quality of life, poor function, depression, stroke recurrence, vascular events, and death.

Methods

PODCAST was a multi-centre prospective randomised open-label blinded-endpoint controlled partial-factorial phase IV trial in secondary and primary care. Participants from 30 UK Stroke Research Network sites who were post ischaemic stroke or intracerebral haemorrhage by 3–7 months were included. All patients gave informed consent.

Interventions

All patients were randomised (1:1) to intensive versus guideline blood pressure lowering (target systolic <125 mmHg versus <140 mmHg). Patients with an ischaemic stroke were also randomised (1:1) to intensive versus guideline lipid lowering (target low density lipoprotein-cholesterol <1.4 mmol/L versus <3 mmol/L). As a result, patients were randomised to one of six groups:

- Intensive BP lowering and intensive lipid lowering (ischaemic stroke only)
- Intensive BP lowering and guideline lipid lowering (ischaemic stroke only)
- Guideline BP lowering and intensive lipid lowering (ischaemic stroke only)
- Guideline BP lowering and guideline lipid lowering (ischaemic stroke only)
- Intensive BP lowering only (intracerebral haemorrhage only)
- Guideline BP lowering only (intracerebral haemorrhage only)

Intensive interventions were delivered in a secondary care/hospital research clinic; guideline interventions were delivered in primary care according to local practice.

Primary outcome

Addenbrooke’s Cognitive Examination-Revised. This was assessed at each clinic visit and its analysis and presentation is described in the outline data tables (Additional file 2). It is a brief cognitive screening tool that was selected because it has greater sensitivity in detecting Alzheimer’s disease and is more sensitive than the Mini-Mental State Examination (MMSE) [9] and has been shown to be sensitive at detecting mild cognitive impairment (MCI) in post-stroke populations [10]. It is good at detecting visuospatial, fluency and executive dysfunction [11].

Secondary outcomes

Feasibility of recruitment and retention of participants, tolerability and safety of the interventions, achieving and maintaining the blood pressure and lipid targets, maintaining differences in systolic blood pressure (>10 mmHg) and low density lipoprotein cholesterol (>1 mmol/L) between the treatment groups, and performing clinic and telephone follow-up of cognition measures. Additional tests of cognition were used:

- Stroop, Trail making. Additional measures of executive function were added since vascular cognitive impairment is known to have a greater effect on these cognitive domains and they better

predict development of dementia and mortality [12–15].

- Montreal Cognitive Assessment (MoCA). This is widely used in post-stroke populations with reasonable sensitivity for detecting MCI and dementia [10, 16–18].
- Telephone MMSE (t-MMSE). This has been compared to the MMSE and has shown strong correlation. A score of 16 on the t-MMSE equates to a score of 19 on the MMSE. A score of 26 on the MMSE equates to a score of 23 on the t-MMSE [19].
- Telephone Interview for Cognitive Status (TICS). This has been validated in a post-stroke population [20].

Blinding

Participants received open-label management. Cognition was assessed both unblinded (in clinic) and blinded (by telephone) to treatment. Adjudication of events (dementia, vascular, serious adverse events) was blinded to management. Recruitment of 600 participants was planned (300/BP group, about 270/statin group) to be sufficient to demonstrate whether sufficient on-treatment differences in BP and lipids can be obtained and maintained, and whether cognition can be assessed satisfactorily. More details of methodology can be found at the published protocol [8].

The study was conducted according to the principles of the Declaration of Helsinki and the International Conference on Harmonisation of Good Clinical Practice. The study was approved by the national research ethics committee (NRES Committee East Midlands – Nottingham 1, approval 09/H0403/71, date 12/11/2009).

Eligibility

The full inclusion and exclusion criteria are given in the published protocol [8] and were designed to include a population who did not have known dementia but who were at higher risk of developing cognitive impairment and dementia on the basis of recent stroke and age, and who were likely to be able to attend follow-up for 5 years. Adult patients were eligible if they fulfilled all of the following criteria:

- Age >70 years and telephone MMSE (t-MMSE) >16° or age >60 and t-MMSE 17–20 (that is, indicator of impairment).
- Previously independent (mRS 0–2)
- Index event was ischaemic stroke (IS) or spontaneous intracerebral haemorrhage (ICH)
- Systolic blood pressure between 125–170 mmHg
- Total cholesterol 3–8 mmol/L
- 3–7 months post stroke onset
- Ability to give written informed consent prior to enrolment

- Had two informants who could support them if cognitive impairment developed

Consent

Informed consent was obtained to undertake a screening cognitive assessment at 8–26 weeks using a telephone version of the MMSE; initially this was done by telephone but was later delivered in clinic. If screened positive, informed consent for the trial was obtained and the clinician used the secure web-based randomisation system to enter a patient into the study between 12 and 30 months post stroke.

Randomisation

To reduce bias and optimise baseline matching between treatment groups, randomisation incorporated stratification (index event), minimisation (on baseline prognostic factors, as highlighted in Table 3), and simple randomisation (in 5 % of patients). Stratification and minimisation allow for improved matching at baseline, minimisation increases statistical power [21], and simple randomisation reduces predictability. The stratification and minimisation variables will be used for adjustment of the primary and secondary analyses. Following randomisation, the investigator was informed of the patient's treatment allocation. Data entry during treatment used the same website and similar range and logic checks.

Trial governance

The trial was supervised by a Trial Steering Committee, and run by a Trial Management Committee (based in Nottingham UK). An independent Data Monitoring Committee met and assessed safety and efficacy on three occasions. Experts, who were blinded to treatment assignment, adjudicated cognitive and dementia outcomes, vascular events, brain scans, and serious adverse events.

Internet trial

The trial was designed as an electronic trial and was accessible via the following links:

- Trial website: <http://www.podcast-trial.org>
- Secure website for real-time data entry, validation and randomisation: https://www.nottingham.ac.uk/~nszwww/podcast/podcasttrialdb/podcast_login.php
- Demo website for investigators to practise data entry: https://www.nottingham.ac.uk/~nszwww/podcast/podcasttrialdb-demo/podcast_login.php (log-in: demoinv1, password: nottingham; pin: 8888)
- Resource website for investigators with all trial documents, including all protocol versions: <http://www.podcast-trial.org/jevpybki.htm>

- Stroop test website: https://www.nottingham.ac.uk/~nszwww/stroop_demo

Data were entered via a secure Internet site. However, some NHS sites could not access certain features, in particular the Stroop application that ran as a Java applet. Problems arose because of hospital firewalls and issues with Java updates on PC and Mac computers.

Progress with the study and modifications to the design

The trial was designed to have two phases of recruitment and funding:

- Start-up phase (36 months, 2010–2013): Recruitment of 600 patients from 30 sites over 24 months with minimum follow-up of at least 12 months. In reality, 83 patients were recruited with the target reduced to 100 patients.
- Main phase (60 months): New funding to be sought for recruitment of 2,800 patients from 100 sites. Funding was never sought since the trial failed to recruit sufficient sites or patients at a rate that was feasible to support a large study.

Several protocol amendments were made, these covering the following issues:

August 2010

1. Addition of twice yearly email reminders to investigators to highlight the need to achieve targets in BP and lipid lowering in patients randomised to intensive treatment. This was done because the difference between intensive and guideline BP and lipid levels was not reaching target (>1 mmol/L LDL cholesterol and >10 mmHg systolic).

May 2012

1. Reduction in target lipid level: The level of target lipid concentration for intensive arm was reduced from LDL cholesterol <2.0 mmol/L to <1.3 mmol/L. This amendment was required because 50 % of patients were at or below the original target at baseline of 2.0 mmol/L, in part reflecting the high usage of statin therapy in this post-stroke population.
2. Revision of suggested guideline lipid lowering therapy (to simvastatin 10–40 mg, pravastatin 10–40 mg, fluvastatin 10–80 mg), and intensive group statins (to atorvastatin > 20 mg, any dose of rosuvastatin). This was due to revised NICE guidelines on lipid management (CG 67, 2008).
3. Addition of monitoring of serum glucose and HbA1c because some BP and lipid drugs may reduce, or cause, diabetes mellitus.
4. Introduction of ‘floating’ clinic appointments to follow planned regular research appointments if a patient randomised to one or both intensive arms had BP and/or lipid readings above target levels. These floating appointments allowed earlier/more aggressive treatment escalation.
5. Clarification that a standing blood pressure measurement should be done in clinic to detect postural hypotension.
6. Addition of NYHA levels 3 or 4 as an exclusion criterion
7. Removal of dementia-specific health-related Quality of Life (DEMQOL) as an outcome
8. Addition/inclusion of patients with posterior circulation infarcts (POCI). POCI was an original exclusion criterion because this group was felt unlikely to develop cognitive impairment.

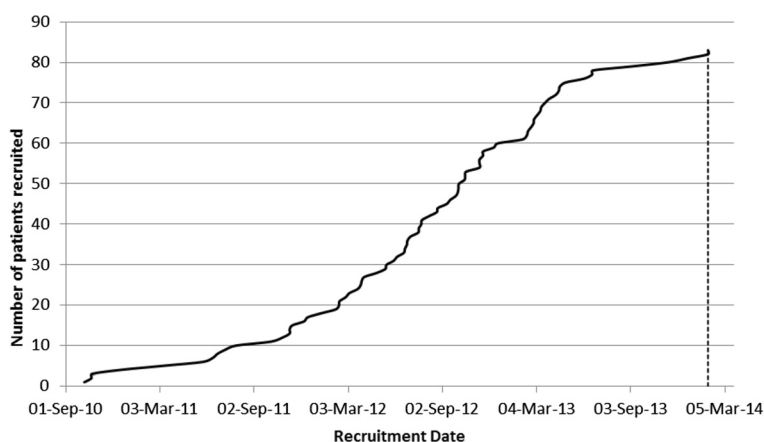


Fig. 1 Recruitment throughout the trial

Table 1 Recruitment issues with the trial

Issue	Explanation	Result/response
Insufficient sites recruited.	Primary Care Trusts refused to fund excess treatments costs, perceiving that some drugs, especially atorvastatin, would be too expensive. This was in spite of atorvastatin becoming generic midway through the trial.	Failure to recruit 30 hospital sites in start-up phase.
Insufficient patients recruited	Insufficient sites recruited. Some sites only identified screen-negative patients (Table 2). Exclusion criteria limited some recruitment; see screen failures (Table 2). Follow-up of patients every 6 months meant that sites reached steady state of follow-up and, to maintain recruitment in other trials, ceased recruiting further patients into PODCAST.	Failure to recruit 600 patients in start-up phase, this precluding moving onto the main phase. The patient target was reduced to 100. Protocol amended to allow inclusion of posterior circulation strokes.

This table follows the format used for the MRC ENOS trial

However cerebellar and brain stem infarcts are known to cause cognitive impairment.

9. Follow-up visits in clinic increased from once a year to every 6 months (with interval blinded telephone follow-up). Low recruitment meant that long-term follow-up in a large trial was unlikely, and so more and earlier visits were necessary to assess and escalate treatment for blood pressure and/or lipid.

- September 2010: Commencement of funding.
- October 2010: Recruitment of first patient.
- September 2012: One year no-cost extension sought and obtained from funders because of low recruitment.
- November 2013: Protocol published [8].
- January 2014: Recruitment of last patient (that is, recruitment over 39 months).
- October 2014: Final follow-up of last patient. End of funding.

June 2013

1. Reduction in sample size for the start-up phase from 600 to 100 patients.
2. Addition of an on-treatment CT scan at or after 1 year of treatment to assess potential changes in white matter disease and cerebral atrophy from pre-baseline.

Key milestones occurred as follows:

- January 2008: Trial planning commenced.
- July 2008: Joint funding application submitted to Alzheimer’s Society and Stroke Association.
- January 2009: Funding awarded.
- April 2009: Confirmation from UK Medicines and Healthcare products Regulatory Agency that trial is not a Clinical Trial of an Investigational Medical Product (CTIMP) and does not fall under the remit of the European Clinical trials Directive.
- November 2009: Approval by UK National Research Ethics Service (Nottingham Research Ethics Committee 1).

Table 2 Summary of screen failures and reasons

Reason for ineligibility	Number
Age 60–70 and t-MMSE > 20	45
Average systolic BP readings <125 mmHg	20
Vascular territory unknown	10
Clinical need for high dose statin	8
Too late: screening should be done before 26 weeks	8
Average systolic BP readings >170 mmHg	7
Too early: screening should be done after 8 weeks	6
Fasting total cholesterol <3 mmol/L	5
Age > 70 and t-MMSE < 17	5
Brain scan >10 days after index event (so precluding differentiation of ischaemic and haemorrhagic stroke)	4
Chronic renal failure/eGFR < 45	4
Modified Rankin Scale > 2	3
Clinical need for intensive BP	3
Consent could not be given	2
No informant available	1
Age 60–70 and t-MMSE < 17	1
Total	132

Table 3 Baseline clinical characteristics. Data are number (%), median [interquartile range] or mean (standard deviation)

	With valid data	All/BP	IS/lipids	ICH
Number	83	83	77	6
Age (years) +	83	74.0 (6.8)	74.3 (6.6)	70.8 (8.4)
>75 (%)	83	42 (50.6)	39 (50.6)	3 (50.0)
Sex, male (%) +	83	64 (77.1)	61 (79.2)	3 (50)
Time to randomisation [months] +	83	4.5 [1.3]	4.5 [1.2]	3.8 [1.7]
<4 (%)	83	21 (25.3)	17 (22.1)	4 (66.7)
Medical history (%)				
Memory problem	77	34 (44.2)	30 (42.3)	4 (66.7)
If yes, length (months)	34	4.8 (2.7)	4.9 (2.9)	4.3 (1.5)
Depression, recent	83	4 (4.8)	4 (5.2)	0 (0.0)
Hypertension, treated				
Pre-index stroke	83	51 (61.4)	47 (61.0)	4 (66.7)
Post-index stroke	83	18 (21.7)	16 (20.8)	2 (33.3)
Neither	83	14 (16.9)	14 (18.2)	0 (0.0)
Hypertension treated with				
Life style measures only	69	0 (0.0)	0 (0.0)	0 (0.0)
Medications only	69	36 (52.2)	34 (54.0)	2 (33.3)
Both	69	30 (43.5)	26 (41.3)	4 (66.7)
Neither	69	3 (4.3)	3 (4.8)	0 (0.0)
Hyperlipidaemia	83	73 (88.0)	68 (88.3)	5 (83.3)
Life style measures only	73	1 (1.4)	0 (0.0)	1 (20.0)
Medications only	73	46 (63.0)	44 (64.7)	2 (40.0)
Both	73	24 (32.9)	22 (32.4)	2 (40.0)
Neither	73	2 (2.7)	2 (2.9)	0 (0.0)
Diabetes mellitus	83	17 (20.5)	16 (20.8)	1 (16.7)
Atrial fibrillation	83	15 (18.1)	15 (19.5)	0 (0.0)
Stroke	83	8 (9.6)	8 (10.4)	0 (0.0)
Transient ischaemic attack	83	16 (19.3)	15 (19.5)	1 (16.7)
Ischaemic heart disease	83	20 (24.1)	19 (24.7)	1 (16.7)
Myocardial infarction	83	11 (13.3)	11 (14.3)	0 (0.0)
Angina	83	18 (21.7)	17 (22.1)	1 (16.7)
Peripheral artery disease	83	5 (6.0)	5 (6.5)	0 (0.0)
Young stroke in first degree	83	10 (12.0)	10 (13.0)	0 (0.0)
Relative smoking (%)				
Current	83	5 (6.0)	5 (6.5)	0 (0.0)
Past	83	51 (61.4)	48 (62.3)	3 (50.0)
Never	83	27 (32.5)	24 (31.2)	3 (50.0)
Alcohol (%)				
>21	83	3 (3.6)	3 (3.9)	0 (0.0)
<21	83	56 (67.5)	52 (67.5)	4 (66.7)
None	83	24 (28.9)	22 (28.6)	2 (33.3)
Median [upw]	83	3 [0, 10]	4 [0, 10]	1 [0, 1]

Table 3 Baseline clinical characteristics. Data are number (%), median [interquartile range] or mean (standard deviation) (*Continued*)

BP tablets (%) +				
0	83	14 (16.9)	14 (18.2)	0 (0.0)
1	83	28 (33.7)	25 (32.5)	3 (50.0)
2	83	29 (34.9)	28 (36.4)	1 (16.7)
3	83	11 (13.3)	9 (11.7)	2 (33.3)
> = 4	83	1 (1.2)	1 (1.3)	0 (0.0)
Median [IQR]	83	1 [1, 2]	1 [1, 2]	1.5 [1, 3]
Lipid tablets (%)				
Any statin +	83	79 (95.2)	75 (97.4)	4 (66.7)
Atorvastatin	79	21 (26.6)	19 (25.3)	2 (50.0)
Fluvastatin	79	1 (1.3)	1 (1.3)	0 (0.0)
Rosuvastatin	79	2 (2.5)	2 (2.7)	0 (0.0)
Simvastatin	79	55 (69.6)	53 (70.7)	2 (50.0)
Pre-morbid mRS (%) + mRS 0	83	20 (24.1)	18 (23.4)	2 (33.3)
mRS 1	83	40 (48.2)	37 (48.1)	3 (50.0)
mRS 2	83	19 (22.9)	18 (23.4)	1 (16.7)
mRS > 2 ^	83	4 (4.8)	4 (5.2)	0 (0.0)
Mean (SD)	83	1.08 (0.8)	1.10 (0.8)	0.83 (0.8)
Hand dominance (%) Right	83	76 (91.6)	70 (90.9)	6 (100.0)
Left	83	6 (7.2)	6 (7.8)	0 (0.0)
Both	83	1 (1.2)	1 (1.3)	0 (0.0)
Side of weakness, left (%)	63	32 (50.8)	30 (50.0)	2 (66.7)
NIHSS (%) Mean (SD) +	83	0.77 (1.1)	0.78 (1.1)	0.67 (0.8)
Median [IQR]	83	0 [0,1]	0 [0,1]	0.5 [0,1]
OCSP classification (%) Total anterior +	83	6 (7.2)	6 (7.8)	0 (0.0)
Partial anterior	83	36 (43.4)	32 (41.6)	4 (66.7)
Lacunar	83	34 (41.0)	32 (41.6)	2 (33.3)
Posterior	83	7 (8.4)	7 (9.1)	0 (0.0)
Addenbrooke's Cognitive Exam-R +	83	86.1 (7.7)	86.0 (7.6)	87.5 (9.9)
MMSE	83	27.9 (2.0)	27.9 (1.9)	27.7 (2.7)
Telephone MMSE	83	20.4 (1.8)	20.4 (1.7)	20.3 (2.7)
Montreal Cognitive Assessment	83	24.0 (2.6)	24.1 (2.6)	22.7 (2.5)
TICS-M	83	24.1 (4.2)	24.3 (4.2)	22.2 (2.6)
Stroop: Part 1 time (sec)	83	54.7	54.6 (20.5)	55.5 (23.6)
Stroop: Part 1 score	83	(20.6) 0.97 (0.0)	0.97 (0.0)	0.99 (0.0)
Stroop: Part 2 time (sec)	83	46.1	46.0 (19.9)	46.6 (31.5)
Stroop: Part 2 score	83	(20.7) 0.97 (0.0)	0.97 (0.0)	0.96 (0.1)
Stroop: Part 3 time (sec)	83	66.9	67.3 (34.8)	62.2 (32.9)
Stroop: Part 3 score	83	(34.5) 0.83 (0.2)	0.83 (0.2)	0.79 (0.3)
Stroop: Interference time (Parts 3-2) (sec)	83	20.9	21.3 (22.3)	15.6 (21.2)
Stroop - Interference score (Parts 32)	83	(22.1) -0.14 (0.2)	-0.14 (0.2)	-0.17 (0.3)
Trail making A time (sec)	83	57.1	58.1 (30.7)	43.7 (12.0)
Trail making A score	83	(30.0) 24.6 (2.8)	24.6 (2.9)	25.0 (0.0)
Trail making B time (sec)	83	155.5	151.5	207.2
Trail making B score	83	(90.8) 22.1 (5.5)	(78.9) 21.9 (5.7)	(192.6) 24.8 (0.4)

Table 3 Baseline clinical characteristics. Data are number (%), median [interquartile range] or mean (standard deviation) (*Continued*)

IQCODE (from informant)	83	3.0 (0.5)	3.0 (0.5)	3.2 (0.2)
Systolic BP (mmHg) +	83	147.1	147.7	139.8
<140 (%)	83	(18.6) 32 (38.6)	(18.6) 30 (39.0)	(18.3) 2 (33.3)
<125 (%)	83	9 (10.8)	8 (10.4)	1 (16.7)
Diastolic BP (mmHg)	83	82.1 (11.1)	82.3 (11.1)	80.1 (13.1)
Heart rate (bpm)	83	71.5 (14.2)	71.7 (14.1)	69.5 (16.7)
Lipids (mmol/L)				
Total cholesterol +	83	4.0 (0.8)	4.0 (0.8)	4.3 (1.2)
Triglycerides	82	1.3 (0.6)	1.3 (0.6)	1.6 (0.6)
HDL cholesterol	81	1.4 (0.5)	1.4 (0.5)	1.5 (0.5)
LDL cholesterol	80	2.0 (0.7)	2.0 (0.7)	1.9 (1)
Non-HDL cholesterol	81	2.6 (0.8)	2.6 (0.8)	2.8 (0.8)
Estimated GFR (ml/min)	79	67.5 (11.6)	68.0 (11.3)	60.8 (13.7)
Glucose (mmol/L)	77	5.6 (1.6)	5.6 (1.6)	5.7 (2.0)

Percentages are calculated from the number of patients with data for that particular variable

+ Minimisation variable - from June 2013 limited to age, ACE-R, systolic blood pressure and total cholesterol because of low recruitment ^ Protocol violation
 BP: blood pressure; bpm: beats per minute; HDL: high density lipoprotein; IS: ischaemic stroke; ICH: intracerebral haemorrhage; LDL: low density lipoprotein;
 MMSE: Mini-Mental State Examination; MoCA: Montreal Cognitive Assessment; NIHSS: National Institutes of Health Stroke Scale; OCSF: Oxfordshire Community
 Stroke Project; TICS-M: Telephone Interview for Cognitive Status-modified

Memory problem: As reported by patient or informant in response to direct questioning, and information from hospital records

MoCA: Estimated from ACE-R with addition of missing questions for attention (reading list of digits forwards and backwards, reading list of letters and tap with hand at each letter A) and abstraction (similarity between banana and orange, similarity between train and bicycle) and use of the ACE-R, not MoCA, picture of an animal. Non-HDL cholesterol = total cholesterol - HDL cholesterol

Results

Only 83 participants were recruited (Fig. 1). The start-up phase did not recruit sufficient numbers to go to the full trial (planned recruitment of 600). A no-cost extension was requested with the aim of recruiting 100 participants. Funding for the main phase of the trial was never sought since the trial failed to recruit at a rate that was feasible to support a large study. Multiple reasons explain poor recruitment of both hospital sites and patients (Table 1). A key problem was the cost of intensive treatment, largely related to atorvastatin, which was proposed in the protocol for use in the intensive lipid control arm [8]. In many cases, the then primary care trusts (now clinical commissioning groups) refused to pay for atorvastatin. Nevertheless, none of these impediments damaged data integrity or validity.

Baseline characteristics

106 patients failed screening with some patients having multiple reasons for screen failure (Table 2). Between 1 October 2010 and 31 January 2014, 83 patients were recruited from 19 sites in the UK; a further 5 sites screened patients but did not recruit a patient.

Patient characteristics at baseline are shown in Table 3; key baseline data included, given as number (%) or mean (standard deviation): age 74.0 (6.8) years, male 64 (77.1 %), index stroke ischaemic 77 (92.8 %), stroke onset to randomisation 4.5 [1.3] months, Addenbrooke's Cognitive

Examination-Revised 86.1 (7.7, maximum score 100), Montreal Cognitive Assessment 24.0 (2.6, maximum score 30), modified Rankin Scale 1.1 (0.8), blood pressure 147.1/82.1 (18.6/11.1) mmHg, total cholesterol 4.0 (0.8) mmol/L and LDL cholesterol 2.0 (0.7) mmol/L. All but one participant had one informant and a majority had two informants (Table 4).

Reporting of results by allocated treatment

The database was locked and the trial unblinded and an interim analysis performed in November 2014, as per the SAP. Interim main results were reported at the UK Stroke Forum in early December 2014. Full results (presented in Additional file 2) will be submitted for publication once the final analysis has been performed. Summary and

Table 4 Identity of first and second informants in 83 participants

Informant	1	2
Wife/partner	52	3
Husband/partner	14	0
Daughter/step-daughter	11	16
Son/step-son	4	12
Friend/neighbour	2	5
Sibling	0	2
Other	0	4
No informant	0	41

individual patient data from PODCAST will be shared with relevant Cochrane and other systematic reviews.

Discussion

Having recruited 83 patients, PODCAST did not achieve its adjusted recruitment target of 100 patients. As a result, the aim of assessing the feasibility of delivering the main phase was not met. Other aims, including the ability to obtain and then maintain differences in BP and lipid levels between intensive and guideline groups, ability to collect cognition scores during regular clinic and telephone follow-up, and incidence rates of cognitive impairment and dementia, will be reported in the main results.

Conclusions

Future trials of dementia prevention in post-stroke populations are required because 20–30 % of stroke survivors will have dementia [22], but >50 % of patients will have cognitive impairment [13, 14]. Cognitive impairment, especially executive dysfunction, results in impaired function, distress to patients and carers and is associated with worse prognosis [23–25]. However, the post-stroke population is very heterogeneous. Also rates of dementia at or before 1 year post-stroke range from 41.3 % in hospital series without excluding prior dementia to 7.4 % in community series of first ever stroke where prior dementia was excluded [23]. Importantly, participants appear to be keen to take part in this type of study, as post-stroke cognitive impairment is one of the silent unmet needs in >40 % of stroke survivors at 1 year [26].

Additional files

Additional file 1: Trial protocol. (PDF 2304 kb)

Additional file 2: Plan for reporting the main results. (DOCX 117 kb)

Abbreviations

ACE-R: Addenbrooke's Cognitive Examination-Revised; BP: blood pressure; BPM: beats per minute; EQ-5D: EuroQoL-5 dimensions; EQ-VAS: EuroQoL-Visual Analogue Scale; HUS: Health Utility Status (derived from EQ-5D); ICH: intracerebral haemorrhage; MMSE: Mini-Mental State Examination; MoCA: Montreal Cognitive Assessment; mRS: Modified Rankin Scale; NIHSS: National Institutes of Health Stroke Scale; PODCAST: Prevention Of Decline in Cognition After Stroke Trial; SAP: statistical analysis plan; SBP: systolic BP; TICS: Telephone Interview Cognition Scale; TOAST: Trial of ORG 10172 in Acute Stroke Treatment; ZDS: Zung Depression Scale.

Competing interests

The following authors report having received recent research or personal funding:

P. Bath – Lundbeck, Phagenesis, ReNeuron

R. Stewart - J&J, Lundbeck, Pfizer, Roche.

The remaining authors have no relevant declarations.

Authors' contributions

PS performed statistical analysis. PS, DB and PB wrote the manuscript. JMW and DB analysed neuroimaging. AB, CB and GF advised on dementia management and diagnosis of neurodegenerative or vascular dementia. PB and GF designed the research, and PS and PB analysed the results. KK, JMW, PP, SP, JR, NS and RS helped design the study and analyse results. All authors read and approved the final manuscript.

Acknowledgements

We thank all the patients, and their informants, for participating in the trial. We also thank the funders: the Alzheimer's Society and the Stroke Association. The sponsor was the University of Nottingham. Finally, we thank the members of the independent Data Monitoring Committee who supervised safety from the beginning to end of the trial.

Chief Investigator(s)

P. M. W. Bath (trial, and lipid arm), G. Ford (BP arm)

Trial Steering Committee

Independent members: John O'Brien (Chair, Newcastle/Cambridge), Stephen Ball (Leeds)

Grant holders: Philip M. W. Bath (Chief Investigator, Nottingham), Gary Ford (Co-Chief Investigator, Newcastle/Oxford), Nikola Sprigg (Deputy Chief Investigator, Nottingham), Clive Ballard (London), Alistair Burns (Manchester), Jonathan Mant (Cambridge), Peter Passmore (Belfast), Stuart Pocock (Consultant Statistician, London), John Reckless (Bath), Rob Stewart (London), Joanna M Wardlaw (Neuroradiologist, Edinburgh).

Patient & Carer representatives: Dave Hanbury, John Murray, Shirley Nurock
Funders' representative: Suzanne Sorensen (Alzheimer's Society, –2011), James Pickett (Alzheimer's Society, 2011–), Peter Coleman (Stroke Association, 2010–14), Kate Holmes (2014–).

Sponsor representative: Angela Shone (University of Nottingham).

Independent Data Monitoring Committee

John Geddes (Oxford, Chair), Jan Staessen (Leuven), Chris Weir (Glasgow, Statistician).

Trial Management Committee

Trial Managers: S. Utton (–2014).

Assistant Trial Manager: H. Foster (2012–).

Medics: Sandeep Ankolekar (–2011), K. Krishnan (2012–).

Coordinators: L. Stokes (–2012), M. Mangoyana (2012–13), K. Whittamore (2013–14), M. Stringer (2014–).

Outcome Coordinators: J. Saunders (–2012), L. Wilkins (2011–12), L. Cobane (2012–13), J. Keeling (2013–).

Data managers: T. Jones (–2013), D. Hazle (2012–), M. Sampson (2013–).

Finance: W. Clarke.

Secretaries: Y. Smallwood, L. Dunn (2013–14).

Cognition/Dementia Adjudicators:

Alistair Burns (Chair, Manchester), Clive Ballard (London), Gary Ford (Newcastle).

Vascular Events Adjudicators:

Peter Passmore (Chair, Belfast), Amit Mistri (Leicester, 2013–14), Robert Henderson (Nottingham, 2013–14).

Serious Adverse Events Adjudicators

Tim England (Derby).

Neuroimaging Adjudicators

Joanna M. Wardlaw (Chair, Edinburgh), Dan Blackburn (Sheffield, 2014).

Health economics

Paul McCrone (London), Martin Knapp (London)

Statistical Analysis

L. Fox (2012–13), P. Scutt (2013–), Lisa Woodhouse (2014–).

Data Management and Programming

Liz Walker, L. Haywood (2011–), Richard Dooley (2013–14)

Recruiting sites (patients recruited/screened): PI, Investigators

Aberdeen Royal Infirmary (6/14): Dr M. J. MacLeod, A. Joyson, H. Gow, J. Furnace

Aintree Hospitals NHS Foundation Trust (5/9): Dr R. Durairaj, C. Cullen, D. Dickinson, M. Ashkar, T. Ingram, V. Sutton, Z. Mellor

Birmingham, Heart of England NHS Foundation Trust – Solihull Hospital (2/9): Dr K. Elfandi, U. Kahn, S. Stafford

Bournemouth, Royal & Christchurch Hospitals NHS Foundation Trust. (6/14):

Dr D. Tiwari, A. Orpen, B. Longland, C. Ovington, E. Rogers, G. Hann, J. Bell, J. Kwan

Bradford Teaching Hospitals NHS Foundation Trust (1/5): Dr C. Patterson, B. Hairsine, L. Johnston, R. Bellfield
 Chesterfield Royal Hospital NHS Foundation Trust (2/9): Dr M. Sajid, M. Ball
 Cornwall, Royal Hospitals NHS Trust, Truro (9/17): Dr F. Harrington, A. Mate, C. Schofield, G. Courtauld, M. Drake
 Doncaster & Bassetlaw Hospitals NHS Foundation Trust (1/2): Dr M. Kini, D. Walstow, M. Hanna
 Inverness, Raigmore Hospital (1/3): Dr P. F. Findlay, A. Macaden, I. Shread
 Margate, QEOM Hospital (1/1): Dr G. Thomas, S. A. Jones
 Mid Cheshire Hospitals NHS Foundation Trust (3/10): Dr A. Kalathil, N. Gautam, R. Miller
 Newcastle-upon-Tyne Hospitals NHS Foundation Trust (6/15): Dr S. Louw, A. Barkat, G. Kennedy, M. Fawcett, T. Thompson, V. Hogg
 North Tees & Hartlepool NHS Foundation Trust (2/4): Dr B. Kumar, D. Bruce, M. Platton
 Nottingham University Hospitals NHS Trust (22/27): Dr A. K. Shetty, Prof P. Bath, Dr K. Krishnan, F. Shelton, J. Clarke, L. Wilkins, Z. Rose, K. Whittamore
 Scarborough General Hospital (1/1): Dr J. Paterson, K. Deighton
 South Tyneside NHS Foundation Trust (1/4): Dr J. Scott, J. Graham, M. Duffy
 West Cumberland Hospital, Whitehaven (1/1): Dr E. Orugun, H. Crowther, R. Jolly
 Yeovil District Hospital NHS Foundation Trust (3/17): Dr K. Rashed, C. Buckley, C. Vickers, D. Hayward, E. Keeling, S. Board
 York Hospitals NHS Foundation Trust (10/11): Dr J. Coyle, A-M Porteous, M. Keeling, N. Dyer, P. Willcoxson
Sites that screened but did not recruit:
 Bath, Royal United Hospital NHS Trust (4): Dr J. Reckless, B. Madigan, D. Button
 Derby Hospitals NHS Foundation Trust (1): Dr K. Muhiddin, M. Mangoyana
 Leicester, University Hospitals (2): Dr D. Eveson, S. Khan
 Poole Hospital NHS Foundation Trust (7): Dr S. Ragab, C. Dickson
 South Tees Hospitals NHS Foundation Trust (2): Dr D. Broughton, K. Chapman

Author details

¹Stroke Trials Unit, Division of Clinical Neuroscience, University of Nottingham, City Hospital campus, Hucknall Road, Nottingham NG5 1 PB, UK.
²Sheffield Institute for Translational Neuroscience, University of Sheffield, 385A Glossop Road, Sheffield S10 2HQ, UK. ³Wolfson Center for Age-Related Diseases, Wolfson Wing, Hodgkin Building, King's College London, Guy's Campus, London SE1 1UL, UK. ⁴Faculty of Medical and Human Sciences, Institute of Brain, Behavior and Mental Health, University of Manchester, Grafton Street, Manchester M13 9NT, UK. ⁵Medical Sciences Division, University of Oxford, John Radcliffe Hospital, Headley Way, Oxford OX3 9DU, UK. ⁶General Practice & Primary Care Research Unit, University of Cambridge, Addenbrooke's Hospital, Forvie Site, Cambridge CB2 0SR, UK. ⁷Institute of Clinical Sciences, Queens University, Belfast, Royal Victoria Hospital, Block B, Belfast BT12 6BA, UK. ⁸Department of Medical Statistics, London School of Hygiene and Tropical Medicine, Keppel Street, London WC1E 7HT, UK. ⁹Department of Endocrinology, Royal United Hospital, Combe Park, Bath BA1 3NG, UK. ¹⁰King's College London (Institute of Psychiatry, Psychology and Neuroscience), Department of Psychological Medicine (Box 63), De Crespigny Park, London SE5 8AF, UK. ¹¹Centre for Clinical Brain Sciences, Western General Hospital, Crewe Rd, Edinburgh EH4 2XU, UK.

Received: 18 May 2015 Accepted: 27 October 2015

Published online: 07 November 2015

References

- Algra A, van Gijn J. Aspirin at any dose above 30 mg offers only modest protection after cerebral ischaemia. *J Neurol Neurosurg Psychiatry*. 1996;60(2):197–9.
- ERAFT (European Atrial Fibrillation Trial) Study Group. Secondary prevention in non-rheumatic atrial fibrillation after TIA or minor stroke. *Lancet*. 1993;342:1255–62.
- Halkes PH, Gray LJ, Bath PM, Diener HC, Guiraud-Chaumeil B, Yatsu FM, et al. Dipyridamole plus aspirin versus aspirin alone in secondary prevention after TIA or stroke: a meta-analysis by risk. *J Neurol Neurosurg Psychiatry*. 2008;79(11):1218–23.
- Leonardi-Bee J, Bath PM, Bousser MG, Davalos A, Diener H-C, Guiraud-Chaumeil B, et al. Dipyridamole for preventing recurrent ischemic stroke and other vascular events: a meta-analysis of individual patient data from randomized controlled trials. *Stroke*. 2005;36(1):162–8.
- Manktelow BN, Potter JF. Interventions in the management of serum lipids for preventing stroke recurrence. *Cochrane Database Syst Rev*. 2009;8(3):CD002091.
- Rashid P, Leonardi-Bee J, Bath P. Blood pressure reduction and the secondary prevention of stroke and other vascular events: a systematic review. *Stroke*. 2003;34:2741–9.
- Ankolekar S, Geeganage C, Anderton P, Hogg C, Bath PM. Clinical trials for preventing post stroke cognitive impairment. *J Neurol Sci*. 2010;299(1–2):168–74.
- Blackburn D, Krishnan K, Fox L, Ballard C, Burns A, Ford G, et al. Prevention of Decline in Cognition after Stroke Trial (PODCAST): a study protocol for a factorial randomised controlled trial of intensive versus guideline lowering of blood pressure and lipids. *Trials J*. 2013;14:401.
- Mioshi E, Dawson K, Mitchell J, Arnold R, Hodges JR. The Addenbrooke's Cognitive Examination Revised (ACE-R): a brief cognitive test battery for dementia screening. *Int J Geriatr Psychiatry*. 2006;21(11):1078–85.
- Pendlebury ST, Mariz J, Bull L, Mehta Z, Rothwell PM. MoCA, ACE-R, and MMSE versus the National Institute of Neurological Disorders and Stroke-Canadian Stroke Network Vascular Cognitive Impairment Harmonization Standards Neuropsychological Battery after TIA and stroke. *Stroke*. 2012;43(2):464–9.
- Morris K, Hacker V, Lincoln NB. The validity of the Addenbrooke's Cognitive Examination-Revised (ACE-R) in acute stroke. *Disabil Rehabil*. 2012;34(3):189–95.
- Melkas S, Vataja R, Oksala NK, Jokinen H, Pohjasvaara T, Oksala A, et al. Depression-executive dysfunction syndrome relates to poor poststroke survival. *Am J Geriatr Psychiatry*. 2010;18(11):1007–16.
- Nys GM, van Zandvoort MJ, de Kort PL, Jansen BP, Kappelle LJ, de Haan EH. Restrictions of the Mini-Mental State Examination in acute stroke. *Arch Clin Neuropsychol*. 2005;20(5):623–9.
- Nys GM, van Zandvoort MJ, de Kort PL, van der Worp HB, Jansen BP, Algra A, et al. The prognostic value of domain-specific cognitive abilities in acute first-ever stroke. *Neurology*. 2005;64(5):821–7.
- Wiberg B, Kilander L, Sundström J, Byberg L, Lind L. The relationship between executive dysfunction and post-stroke mortality: a population-based cohort study. *BMJ Open*. 2012;2:3.
- Dong Y, Slavin MJ, Chan BP, Venketasubramanian N, Sharma VK, Collinson SL, et al. Improving screening for vascular cognitive impairment at three to six months after mild ischemic stroke and transient ischemic attack. *Int Psychogeriatr*. 2014;26(5):787–93.
- Dong Y, Yean Lee W, Hillal S, Saini M, Wong TY, Chen CL, et al. Comparison of the Montreal Cognitive Assessment and the Mini-Mental State Examination in detecting multi-domain mild cognitive impairment in a Chinese sub-sample drawn from a population-based study. *Int Psychogeriatr*. 2013;25(11):1831–8.
- Pendlebury ST, Mariz J, Bull L, Mehta Z, Rothwell PM. Impact of different operational definitions on mild cognitive impairment rate and MMSE and MoCA performance in transient ischaemic attack and stroke. *Cerebrovasc Dis*. 2013;36(5–6):355–62.
- Newkirk LA, Kim JM, Thompson JM, Tinklenberg JR, Yesavage JA, Taylor JL. Validation of a 26-point telephone version of the Mini-Mental State Examination. *J Geriatr Psychiatry Neurol*. 2004;17(2):81–7.
- Barber M, Stott DJ. Validity of the Telephone Interview for Cognitive Status (TICS) in post-stroke subjects. *Int J Geriatr Psychiatry*. 2004;19(1):75–9.
- Weir CJ, Lees KR. Comparison of stratification and adaptive methods for treatment allocation in an acute stroke clinical trial. *Stat Med*. 2003;22:705–26.
- Pendlebury ST, Rothwell PM. Prevalence, incidence, and factors associated with pre-stroke and post-stroke dementia: a systematic review and meta-analysis. *Lancet Neurol*. 2009;8(11):1006–18.
- Oksala NK, Jokinen H, Melkas S, Oksala A, Pohjasvaara T, Hietanen M, et al. Cognitive impairment predicts poststroke death in long-term follow-up. *J Neurol Neurosurg Psychiatry*. 2009;80(11):1230–5.
- Tatemichi TK, Paik M, Bagiella E, Desmond DW, Pirro M, Hanzawa LK. Dementia after stroke is a predictor of long-term survival. *Stroke*. 1994;25(10):1915–9.
- Wiberg B, Lind L, Kilander L, Zethelius B, Sundelof JE, Sundstrom J. Cognitive function and risk of stroke in elderly men. *Neurology*. 2010;74(5):379–85.
- McKevitt C, Fudge N, Redfern J, Sheldenkar A, Crichton S, Rudd AR, et al. Self-Reported Long-Term Needs After Stroke. *Stroke*. 2011;42:1398–1403.