



THE UNIVERSITY *of* EDINBURGH

Edinburgh Research Explorer

Expression profiles and possible roles of galectins in the corpus luteum

Citation for published version:

Nio-Kobayashi, J, Hashiba, K, Sano, M, Okuda, K, Duncan, W & Iwanaga, T 2016, 'Expression profiles and possible roles of galectins in the corpus luteum', *Trends in Glycoscience and Glycotechnology*.
<https://doi.org/10.4052/tigg.1416.1E>

Digital Object Identifier (DOI):

[10.4052/tigg.1416.1E](https://doi.org/10.4052/tigg.1416.1E)

Link:

[Link to publication record in Edinburgh Research Explorer](#)

Document Version:

Peer reviewed version

Published In:

Trends in Glycoscience and Glycotechnology

General rights

Copyright for the publications made accessible via the Edinburgh Research Explorer is retained by the author(s) and / or other copyright owners and it is a condition of accessing these publications that users recognise and abide by the legal requirements associated with these rights.

Take down policy

The University of Edinburgh has made every reasonable effort to ensure that Edinburgh Research Explorer content complies with UK legislation. If you believe that the public display of this file breaches copyright please contact openaccess@ed.ac.uk providing details, and we will remove access to the work immediately and investigate your claim.



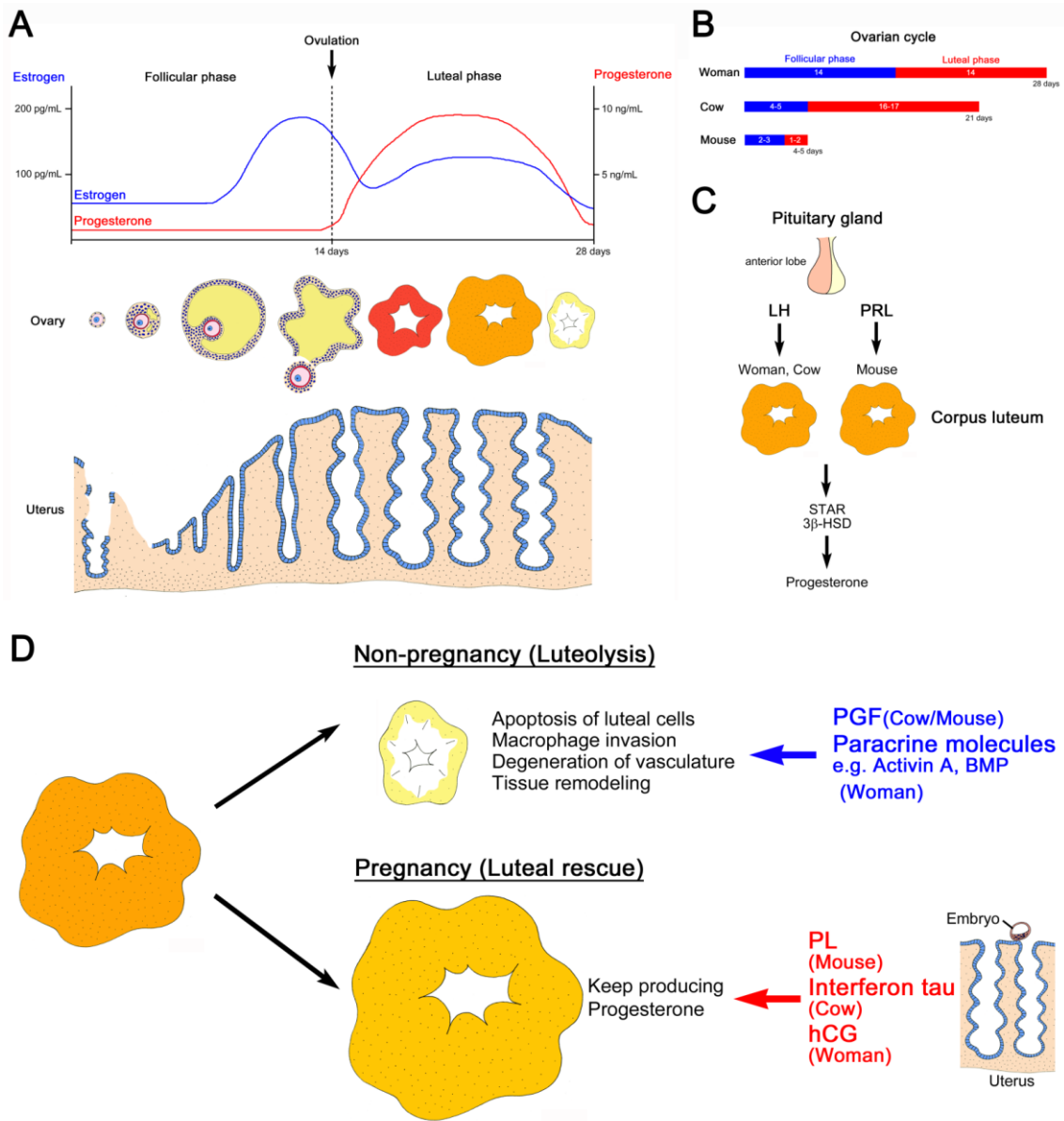


Figure 1 Nio-Kobayashi et al.

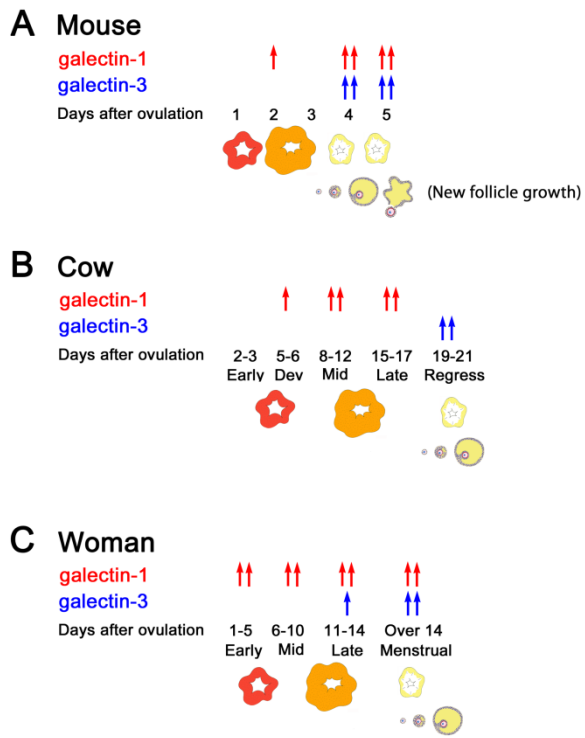


Figure 2 Nio-Kobayashi et al.

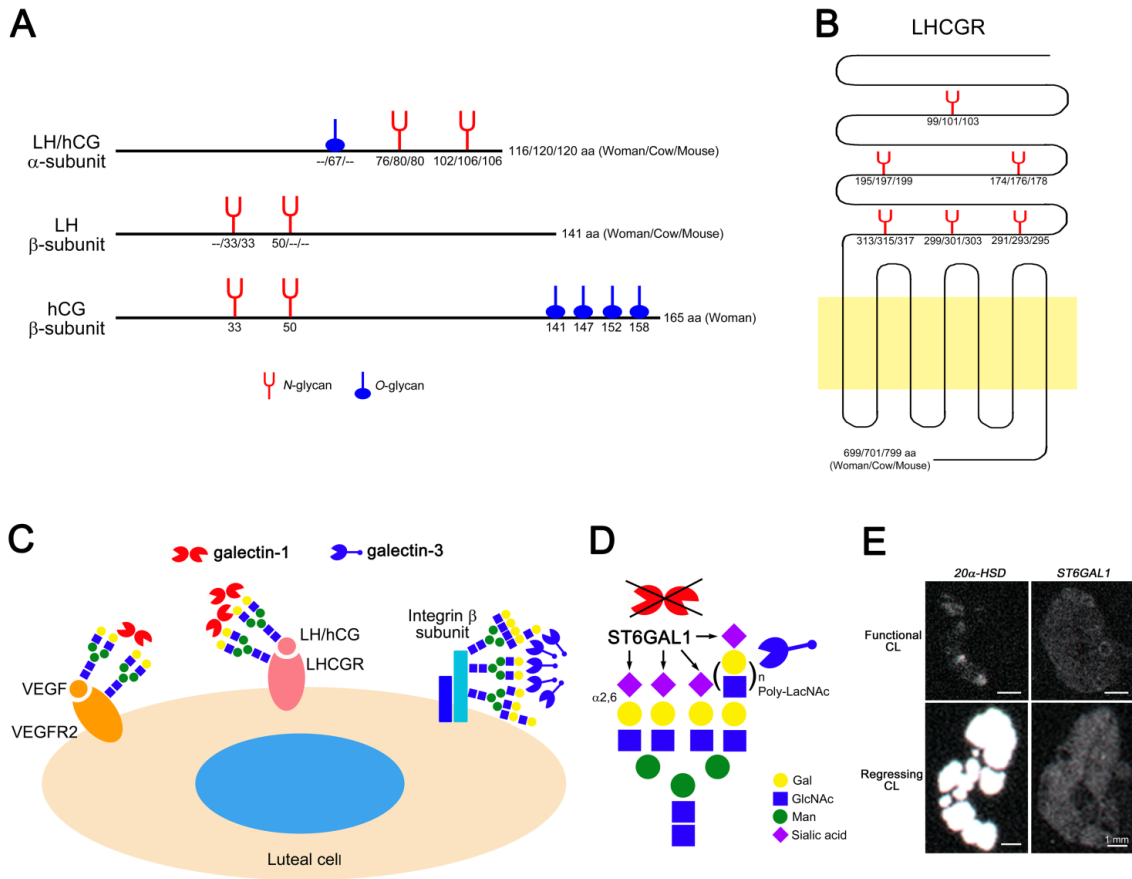


Figure 3 Nio-Kobayashi et al.