



THE UNIVERSITY *of* EDINBURGH

## Edinburgh Research Explorer

# Integrated environmental and genomic analysis reveals the drivers of local adaptation in African indigenous chickens

### Citation for published version:

Gheyas, A, Trujillo, AV, Kebede, A, Lozano-Jaramillo, M, Dessie, T, Hanotte, O & Smith, J 2021, 'Integrated environmental and genomic analysis reveals the drivers of local adaptation in African indigenous chickens', *Molecular Biology and Evolution*. <https://doi.org/10.1093/molbev/msab156>

### Digital Object Identifier (DOI):

[10.1093/molbev/msab156](https://doi.org/10.1093/molbev/msab156)

### Link:

[Link to publication record in Edinburgh Research Explorer](#)

### Document Version:

Publisher's PDF, also known as Version of record

### Published In:

*Molecular Biology and Evolution*

### General rights

Copyright for the publications made accessible via the Edinburgh Research Explorer is retained by the author(s) and / or other copyright owners and it is a condition of accessing these publications that users recognise and abide by the legal requirements associated with these rights.

### Take down policy

The University of Edinburgh has made every reasonable effort to ensure that Edinburgh Research Explorer content complies with UK legislation. If you believe that the public display of this file breaches copyright please contact [openaccess@ed.ac.uk](mailto:openaccess@ed.ac.uk) providing details, and we will remove access to the work immediately and investigate your claim.



Article (Discoveries)

## Integrated environmental and genomic analysis reveals the drivers of local adaptation in African indigenous chickens

Almas A. Gheyas<sup>a\*</sup> (<https://orcid.org/0000-0002-7682-4394>), Adriana Vallejo-Trujillo<sup>b</sup> (<https://orcid.org/0000-0003-3680-218X>), Adebabay Kebede<sup>c,d</sup> (<https://orcid.org/0000-0001-5124-4257>), Maria Lozano-Jaramillo<sup>e</sup> (<https://orcid.org/0000-0001-8344-4827>), Tadelle Dessie<sup>c</sup> (<https://orcid.org/0000-0002-1630-0417>), Jacqueline Smith<sup>a</sup> (<https://orcid.org/0000-0002-2813-7872>), Olivier Hanotte<sup>b,c,\*</sup> (<https://orcid.org/0000-0002-2877-4767>)

**Affiliations:** <sup>a</sup>Centre for Tropical Livestock Genetics and Health (CTLGH), The Roslin Institute, University of Edinburgh, Easter Bush Campus, EH25 9RG, UK; <sup>b</sup>Cells, Organism and Molecular Genetics, School of Life Sciences, University of Nottingham, Nottingham, UK, NG7 2TQ; <sup>c</sup>LiveGene – CTLGH, International Livestock Research Institute (ILRI) Ethiopia, PO Box 5689, Addis Ababa, Ethiopia; <sup>d</sup>Amhara Regional Agricultural Research Institute, Bahir Dar, Ethiopia, PO Box 27; <sup>e</sup>Wageningen University & Research Animal Breeding and Genomics, 6700 AH Wageningen, The Netherlands, PO Box 338

**\*Corresponding Authors:** Almas A. Gheyas: [almas.gheyas@roslin.ed.ac.uk](mailto:almas.gheyas@roslin.ed.ac.uk); Olivier Hanotte: [o.hanotte@cgiar.org](mailto:o.hanotte@cgiar.org); [olivier.hanotte@nottingham.ac.uk](mailto:olivier.hanotte@nottingham.ac.uk)

**Keywords:** Local environmental adaptation, Ecological Niche Modelling, selection signature, genotype-environment association, Redundancy Analysis, African indigenous chicken

## Abstract

Breeding for climate resilience is currently an important goal for sustainable livestock production. Local adaptations exhibited by indigenous livestock allow investigating the genetic control of this resilience. Ecological Niche Modelling (ENM) provides a powerful avenue to identify the main environmental drivers of selection. Here, we applied an integrative approach combining ENM with genome-wide selection signature analyses (*XPEHH* and *Fst*) and genotype-environment association (Redundancy Analysis), with the aim of identifying the genomic signatures of adaptation in African village chickens. By dissecting 34 agro-climatic variables from the ecosystems of 25 Ethiopian village chicken populations, ENM identified six key drivers of environmental challenges: one temperature variable - strongly correlated with elevation, three precipitation variables as proxies for water availability, and two soil/land cover variables as proxies of food availability for foraging chickens. Genome analyses based on whole-genome sequencing ( $n = 245$ ), identified a few strongly supported genomic regions under selection for environmental challenges related to altitude, temperature, water scarcity and food availability. These regions harbour several gene clusters including regulatory genes, suggesting a predominantly oligogenic control of environmental adaptation. Few candidate genes detected in relation to heat-stress, indicates likely epigenetic regulation of thermo-tolerance for a domestic species originating from a tropical Asian wild ancestor. These results provide possible explanations for the rapid past adaptation of chickens to diverse African agro-ecologies, while also representing new landmarks for sustainable breeding improvement for climate resilience. We show that pre-identification of key environmental drivers, followed by genomic investigation, provides a powerful new approach for elucidating adaptation in domestic animals.

## Background

The global livestock sector is facing a major threat from climate change. Extreme weather and global warming are not only challenging the physiological tolerance of animals but also adversely affecting their ecosystems, leading to changes in the quality and quantity of livestock feed or forage, water availability, and disease prevalence (Rojas-Downing, et al. 2017; Rashamol and Sejian 2018). The demand for livestock products, however, is on rise and is estimated to double by 2050 due to increasing populations and improved living standards (Rashamol and Sejian 2018). Sustainable improvement of livestock production, to cater for the increased global demand, will therefore crucially depend on our ability to utilize/develop

climate resilient breeds. Indigenous livestock populations in different parts of the world show greater adaptation to their local agro-climatic conditions compared to exotic breeds (Rashamol and Sejian 2018). Some livestock species, like domestic chicken, show wide environmental tolerance as they are found in practically all human settlements around the world – both in tropical and temperate regions. Elucidating the genetic components of local adaptations in such ubiquitous species will be invaluable towards achieving climate change resilience by allowing the identification of stress adaptation genes and thereby facilitating breed improvements by combining productivity and resilience genotypes.

In the present study, we dissect the environmental and genomic data of many Ethiopian indigenous chickens from diverse agro-climatic regions to identify the environmental and genetic drivers of local adaptation. Ethiopia, with its extreme altitudinal topographies - varying from below sea level to over 4,500 meters above sea level (m.a.s.l.), - illustrates the diversity of agro-ecologies found across tropical Africa (Figures 1A-1B). Three distinct temperature zones are observed in Ethiopia – cool (dega), temperate (weina dega) and hot (kolla) (The Library of Congress 1991). The cool zone expands over the western and the eastern parts of the north-western Ethiopian plateau with elevation generally above 2,400 m.a.s.l., and temperature between near-freezing and 16°C. Lower elevations of the plateau (1,500 - 2,400 m.a.s.l.) constitute the temperate zone, where temperature varies between 16°C and 30°C. The hot zone is located mostly in the eastern parts of the country, where the elevation is below 1,500 m.a.s.l., and the maximum temperature can reach as high as 50°C. A large variation in precipitation - from about 15 cm to 210 cm per annum – is also observed across the country (Fazzini, et al. 2015). While some areas receive rainfall throughout the year, in other parts it is mostly seasonal. Rainfall is the heaviest and most abundant in the southwest and generally decreases from South to North, mainly along the eastern lowlands (The Library of Congress 1991). Different combinations of temperature and rainfall patterns have created a gradation in climatic conditions, which vary from hot-humid and hot-arid to cold-humid and cold-arid (Figure 1B).

The chicken (*Gallus gallus domesticus*) is an introduced species in Africa. While Egypt provides the earliest iconographic evidence of domestic chicken (Mwacharo, et al. 2013), the oldest African chicken bones were found in Ethiopia at the Mezber site of Tigray region, dated to around c.921–801 BCE (Woldekiros and D'Andrea 2017). Molecular evidence supports at least two arrival/dispersion waves for domestic chickens in Africa (Mwacharo, et al. 2013). The first wave likely came from the Indian subcontinent around three thousand years ago, following maritime and terrestrial routes, entering Africa through today's Egypt

and the Horn of the continent. The second wave of arrival occurred during the mid-first millennium AD along Africa's eastern coast, following the maritime trading routes. This may have brought chicken genetic diversity from as far as Southeast and East Asia (Prendergast, et al. 2017). Since its introduction, domestic chicken has dispersed with human movement throughout Africa and have adapted to diverse agro-climatic conditions.

Today, backyard poultry farming constitutes an important economic activity in Ethiopia, providing both income and nutrition to poor rural households and contributing significantly to the national economy. Almost 97% of the country's total poultry meat and egg production comes from backyard farming of chickens by small-holder farmers (Shapiro, et al. 2017). Such backyard farming still relies predominantly on indigenous breeds, characterized by their tolerance to various local environmental challenges (e.g. extreme climatic conditions like temperature and precipitation, disease, and predation) and their ability to forage for food (Getu 2014; Shapiro, et al. 2017; Bettridge, et al. 2018). In the absence of any management practices or breed improvement initiatives, the productivity of these indigenous chickens, however, is quite poor compared to commercial breeds raised under managed farming conditions. Elucidating the genetic basis of local adaptation of these birds will have important implications for sustainable improvement of poultry production.

Despite the observational knowledge that African indigenous chickens are adapted to their harsh environmental conditions, the genetic mechanisms underlying these adaptations are still largely unknown (Muchadeyi and Dzomba 2017). Likewise, little effort has been made to dissect livestock ecosystems to identify major environmental factors that trigger adaptive response (Muchadeyi and Dzomba 2017). Conventionally, environment-genome adaptation studies have focused on the adaptation to an inferred specific environmental stressor, e.g. high altitude or heat stress (Zhang, et al. 2016; Cedraz, et al. 2017), or in a single ecotype (Elbeltagy, et al. 2019; Walugembe, et al. 2019), without analysing the environmental stressors of the considered agro-ecology. In the present study, we are adopting a powerful integrative approach - combining Ecological Niche Modelling (ENM) with genomic analyses (selection signature and genotype-environment association) to first dissect the environmental drivers of local adaptation and then to investigate their impact on the genome. We apply this approach across ecotypes of Ethiopian indigenous chicken populations.

## Results

### Genomic diversity of Ethiopian indigenous chickens

Genomic data for the present study originated from the whole genome sequencing (WGS) of 245 Ethiopian indigenous chicken samples from 25 different populations representing diverse agro-climatic conditions (Figures 1A-1B, Supplementary Table S1). Analysis of the WGS data detected 19.5 M SNPs, of which around 29% are novel. The genetic diversity of the populations is similar, with 10 – 12 M SNPs detected per population and a mean genome nucleotide diversity ( $\pi$ , based on individual sites) between 0.28 and 0.34. After applying stringent quality filtration, we used 14 M autosomal SNPs and 238 individuals for all downstream genomic analyses (see Materials and Methods).

Principal component analysis (PCA) based on the filtered variants reveals the structure and relatedness of the 25 populations (Figure 1C). Only the Hugub and Jarso populations from the Rift Valley slope in eastern Ethiopia are clearly separated from the other populations whereas only a weak sub-structuring based on geographic closeness is generally observed among the rest of the populations. Admixture analysis conforms to this result by showing contributions from three ancestral gene pools, with Hugub and Jarso having a major contribution from a single gene pool, which has a minor presence in the other populations (Figure 1D, Supplementary Figure S1). *Fst* analysis across all 25 populations shows a weighted *Fst* of only 0.04, implying a very low level of population differentiation (see Supplementary Figure S2 for pairwise *Fst* between populations).

### Ecological Niche Modelling (ENM) reveals the environmental diversity of Ethiopian chicken habitats and identifies important environmental drivers of local adaptation

ENM is a powerful tool for predicting the distribution of a species based on the environmental conditions of the species' known occurrence locations. The distribution models were built using the maximum entropy algorithm implemented by MaxEnt (Phillips, et al. 2006) with data on 34 different agro-climatic variables at 250 geographic data points (10 per population). These were considered as "occurrence data". Moreover, 10,000 geographic data points from the remaining of Ethiopia were included as background points, against which the occurrence data could be projected to create population-specific environmental suitability maps. The agro-climatic variables included 21 climatic parameters, eight soil properties, four vegetation parameters, and elevation data from public databases (Supplementary Table S2). These variables were chosen considering their biological relevance for scavenging chickens, e.g.

climatic variables and elevation are expected to affect physiological tolerance of chicken, soil variables likely influence the type and abundance of food, and the vegetation parameters may affect both food availability and exposure to predation. Accordingly, these variables were considered as proxies of environmental selection pressures.

In the first step of ENM, we removed variables which are highly correlated ( $r_s > 0.6$ ; except one from each correlated group) and/or with low contribution in explaining the Ethiopian chicken ecosystems ( $< 4\%$ ) (Supplementary Figures S3, S4). It retained only eight variables: the minimum temperature of the coldest month of a year (minTemp), precipitation seasonality which represents the variation in precipitation across a year (precSeasonality), precipitation in the wettest quarter (precWQ) of a year, precipitation in the driest quarter of a year (precDQ), soil organic carbon content (SoilOrgC), grass/shrub cover (Grassland), proportion of cultivated land (LandUse) and the dominant cultivated crop in an area (Crop\_dominance). Upon further checking, the Grassland variable was removed as it showed high multicollinearity (Variance Inflation factor  $> 7$ ) with LandUse. We also removed Crop\_dominance because of ambiguity and possible erroneous categorization of some of the data points based on visual examination in Google Earth.

The final model with the six selected variables produced a refined estimate of the relative contribution of the variables (Figure 2A). SoilOrgC shows the largest individual contribution (24%), followed by the minTemp (21%), while LandUse has the smallest contribution (10%). The three precipitation variables (precWQ, precDQ and precSeasonality) show a combined contribution of 45%. PCA based on these six variables spread the populations in the environmental space, showing large heterogeneity in Ethiopian agro-climatic conditions and supporting the importance of these variables as environmental drivers of adaptation (Figure 2B). Geographically close populations are generally positioned close to each other with some notable exceptions, e.g. Alfa Midir/Negasi Amba and Arabo/Adane which are geographically close to each other but distant in the environmental space. In contrast, Arabo and Jarso appear close to each other in the environmental space even though they are geographically distant (409 km; Figures 1 and 2B). These outlier pairs show the drastic change in Ethiopian climate and landscape even within short geographic distances. The environmental diversity of Ethiopia is further illustrated by the environmental suitability maps (Figure 2C), which describe how similar is the environment across the country for each of the sampled populations.

## Genomic analyses identify candidate loci for environmental adaptation

With the identification of the important environmental drivers of selection, our next goal was to determine the genetic basis of adaptation to these factors. Two types of analyses were performed: (i) Selection Signature Analysis (SSA) by comparing extreme groups of populations (Low *versus* High) for each environmental predictor (Table 1, Supplementary Figure S7), using *Fst* (Weir and Cockerham 1984) and XPEHH (Sabeti, et al. 2007) approaches with overlapping sliding windows (20 kb size with 10 kb step) and (ii) Genotype-Environment Association (GEA) using Redundancy Analysis (RDA), a multivariate linear regression approach that can simultaneously analyse many loci to detect weak multi-locus signatures of selection (Forester 2019). RDA was chosen over other GEA methods for its robust performance across different sample sizes, levels of population structure, and demographic histories.

SSA windows with empirical *P*-value < 0.01 were considered as putative selective sweeps for a standardized *Fst* (*ZFst*) > 5 or an absolute standardized XPEHH ( $|XPEHH\_std|$ ) > 3 (Supplementary Figures S9-S10). Moreover, since the positive and negative values of XPEHH indicate directionality of selection, all SNPs within a XPEHH-based candidate window needed to show the same directionality. For *Fst*-based candidate windows, we determined the direction of selection based on which group (Low or High) had the lower value of pooled heterozygosity (*Hp*) (Rubin, et al. 2010), and/or based on the signs of the XPEHH value for the corresponding windows (see Materials and Methods).

Across the different environmental analyses, we observe a weak positive correlation between the *Fst* and the XPEHH results ( $r_s = 0.22 - 0.34$ ,  $P < 2.2e-16$ ). A similar observation has also been reported in previous studies (Ma, et al. 2015). Depending on the environmental variables, *Fst* identified 71 to 237 and XPEHH identified 210 to 405 windows above the assigned thresholds (Figure 3A). Selective sweep windows common to both analyses were considered as our strongest candidates. The number of common windows ranged from 6 (SoilOrgC variable) to 24 (precDQ and LandUse variables) (Figure 3A), but none was found for the precWQ variable (Supplementary Figure S12). After merging adjacent windows, 107 to 168 selective Sweep Regions (SRs) of 20 kb to 550 kb size range were obtained (Table 1). Around 76% - 90% of the detected SRs overlap with genes (Supplementary Table S3). The SRs harbour a large number of SNPs (~62,000 to ~101,000), but only 1.5% to 8% show a large difference in allele frequency ( $dAAF > 0.5$ ), and only a handful of these ( $n = 1$  to 35) belong to a potentially functional category (non-synonymous, splicing and ncRNA exonic) (Supplementary Table S4). Hypergeometric tests show that intergenic SNPs are over-



represented among those with large dAAF, while SNPs within genes (non-synonymous, intronic and UTR) are under-represented ( $P < 7.34e-09$ ). The predominance of intergenic SNPs among high frequency variants may indicate that regulatory regions play major roles in adaptation traits. However, it is also possible that many of the intergenic variants are actually neutral but were easily hitchhiked to high frequency with causal variants without having any physiological consequence. Many of the SRs overlap with known QTLs (ChickenQTLdb), suggesting the affected phenotypes (Figure 3B, Supplementary Table S5).

RDA was performed using a set of genome-wide LD-pruned SNPs ( $n = 1,210,311$ ) as response variables and the six environmental predictors as explanatory variables.

Conditioning on geography (latitude and longitude) was applied to correct for spatial auto-correlation and neutral population genetic structure arising from geographic proximity (Rellstab, et al. 2015). In addition, population structure arising from the different origins of the chicken populations (Figure 1D) was corrected for by partialling out ancestry-coefficients from ADMIXTURE analysis. The overall model was highly significant (permutation analysis  $P$ -value  $< 0.01$ ), although it explained only 0.9% of the total genetic variance. This result is not unusual given that only a small proportion of the 1.2 M SNPs is expected to be associated with environmental predictors (Forester 2019). The first five of the six RDA axes were significant, explaining about 88% of the variance captured by the RDA model (Figure 4A-B). Therefore, SNPs from the two extreme ends of the loading distribution ( $SD > 3.5$ ) at each significant axis were taken as outliers ( $n = 2,863$  in total). Considering the strongest correlated environmental variable for each SNP, we found 361 - 668 outlier SNPs per environmental predictor. The correlation values were generally low to moderate, ranging between 0.04 and 0.52 (median = 0.20) (Figure 4C). We applied further filtration of  $r > 0.3$  to retain only those with relatively large environmental correlation; this retained only 374 outliers. Since an LD-pruned SNP set was used in the analysis, it is quite possible that the actual causal variants were not included. We therefore identified any variants that were in complete LD with the outliers SNPs ( $r^2 = 1$ ). This added another 96 SNPs to the candidate SNP list, taking the total to 470 (Supplementary Table S7). The RDA candidate SNPs represent 320 gene-environment combinations, ranging from 21 genes for minTemp to 166 genes for SoilOrgC (Figure 4D). Only 4.2% ( $n=20$ ) of these are common with those detected in either the XPEHH or *Fst* approach but none were detected by all three methods (Figure 4E). The very low overlap between RDA and SSA may be attributed to two possible reasons. First, RDA was performed using LD pruned SNP set and it is likely that many environmentally associated SNPs were not

actually tested. Second, RDA applies a linear regression approach. If the genotype-environment association is anything but linear, it will not be detected by RDA.

### ***Adaptation to extreme temperatures and high altitude***

The minimum temperature of the coldest month of a year (minTemp) shows a strong positive correlation with the maximum temperature of the warmest month ( $r_s = 0.9$ ) and a strong negative correlation ( $r_s < -0.91$ ) with elevation (m.a.s.l.). Therefore, for the SSA, the Low group included two populations (Alfa Midir and Negasi Amba) living at the lowest minimum temperature, the lowest maximum temperature and the highest altitude environments, while the High group included two populations (Hugub and Mihquan) living at the highest minimum temperature, highest maximum temperature and the lower- altitude environments (Supplementary Figure S7). The majority of the SRs (82%) and the strongest signals were detected in the Low group providing evidence in support of adaptation to low temperature and/or high altitude (Figures 3A, 5B-5D, Supplementary Table S3). Of the 209 genes overlapping the SRs, ten genes - all in the Low group - were detected in both *Fst* and XPEHH analyses. These are considered as the most significant candidates (Table 2). Nine of these genes (*CLP1*, *YPEL4*, *ENSGALG00000007381*, *UBEL6*, *TIMM10*, *RTN4RL2*, *SLC43A3*, *PGR2/3*, *P2RX3*) belong to a single SR in chr5:17250000-17280000 (Figure 5E-5G), while the remaining one (*UTP18*) overlaps the region in chr18:5100000-5120000.

Most of the common genes on chr5 SR can be directly related to various stress responses induced by high altitude, e.g. hypoxia (Sarkar, et al. 2003), thrombosis (Gambhir, et al. 2014) and cold temperature (Table 2). For example, *CLP1* is linked to cardiac muscle hypertrophy (Espinoza-Derout, et al. 2007), *YPEL4* has a role in pulmonary diseases (Truong, et al. 2018), *P2RX3* and *ENSGALG00000007381* are involved in blood coagulation (Reactome ; Uniprot), and *SLC43A3* plays a possible important role in the repair and growth of the lung tissue under oxidative stress (Furukawa, et al. 2015). *P2RX3* is also involved in the sensory response to cold and heat, while *PGR2/3* has a role in the immune response (Uniprot). Other genes, e.g. *RTN4RL2*, *UBE2L6*, and *TIMM10* have been found differentially expressed in cells under hypoxic conditions (Lai, et al. 2016; Lee, et al. 2018; Marchesi, et al. 2019), with *RTN4RL2* protecting motor neurons against apoptosis (Uniprot), which may be an essential adaptation to high altitude-induced hypoxia. *UTP18* from chr18 SR has also been found differentially expressed in human hypoxic cardiomyocytes cell line (Lee, et al. 2018) and is involved in the processing of the pre-18S ribosomal RNA (rRNA). The rRNAs are important components of ribosome - the factory for protein biosynthesis (Uniprot).

Some other notable candidates for adaptation to low temperature and/or high altitude, detected with a strong signal ( $ZF_{st} > 8$  or  $|XPEHH\_std| > 4$ ) but from a single approach, include: *SDK1* - which regulate the dendritic spine development and synaptic connectivity (Uniprot), *TRIM3* - involved in nervous system development and critical cellular processes such as proliferation, apoptosis, and transcriptional regulation (Chen, et al. 2014), and *ARFIP2* - with a role in autophagy (Uniprot).

In the High group, 25 candidate genes were found, but none were common between *Fst* and XPEHH analyses. The only gene that overlaps a strong SSA signal is *TOGARAM1* ( $|XPEHH\_std| > 4$ ) (Figure 5E), which is involved in the assembly of non-motile cilia (Nachury and Mick 2019). These organelles are essential for cellular signal transduction and heat-shock induces their rapid loss (Prodromou, et al. 2012). *TOGARAM1* may play an important adaptive role in alleviating this effect in high temperature conditions.

Ingenuity Pathway Analysis (IPA) of the 184 candidate genes from the Low group indicates enrichment of processes like lipid metabolism, small molecule biochemistry, and molecular transport (Supplementary Table S6A), which are expected as hypoxia or cold-temperature stresses affect a cascade of biosynthetic and molecular processes (Chohan 1984; Hopfl, et al. 2003). Low group candidates are also associated with many cardiotoxicity terms like bradycardia, cardiac arrhythmia, heart failure, congenital heart anomaly and cardiac enlargement – indicating involvement in hypoxia stress response. Contrarily, the genes from the High group show more enrichment for processes related to organismal growth and development (Supplementary Table S6A). Low group candidates overlapped with many known QTLs, including those related to skin properties, body temperature, blood parameters, abdominal fat, immune response, and production traits. Meanwhile, High group candidates showed overlap with QTLs for feather properties, disease susceptibility and immune response, and Feed Conversion Ratio (FCR) (Figure 3B, Supplementary Table S5).

Candidate SNPs from RDA analysis are linked to only 21 genes with correlation to minTemp varying between 0.3 and 0.36. Only two of these genes have also been detected by one approach of SSA: *VMP1* - a stress induced gene involved in the autophagy process (Uniprot), and *SEPT9* - a master transcriptional regulator of the adaptive response to hypoxia (Uniprot) (Supplementary Tables S7, S8).

### *Adaptation to extreme rainfall patterns*

Three of the six environmental parameters found in the ENM are related to rainfall (PrecSeasonality – variation in precipitation across the year, PrecWQ – precipitation during the wettest quarter, and PrecDQ – precipitation during the driest quarter). Precipitation variables can affect chicken biology in different ways, e.g. insufficient rainfall may limit access to drinking water, while excessive rainfall may facilitate the spread of pathogens and parasites, challenging chicken immunity (Afrimash 2018).

Analysis of the precipitation variables provided a strong indication of adaptation to restricted water as more SRs (61% of 427 regions) and stronger signals were observed in populations where water scarcity is likely an issue; for example, in agro-ecologies with either a low rainfall (Low groups for precDQ and precWQ) or large seasonal variation in rainfall (High group for precSeasonality) (Figure 3A, Supplementary Table S3). Prolonged water deprivation causes dehydration, which can have serious consequences on the overall physiology due to shrinkage of cells, salt-water imbalance in the body, increased osmotic pressure, renal dysfunction, and disruption of the temperature regulatory cues in the brain (Encyclopaedia of Britannica; Swayne and Radin 1991).

Analysis of the three precipitation variables detected 500 genes overlapping SRs, with 14 commonly identified in *Fst* and XPEHH analyses (Table 2). Ten of these genes come from the precDQ Low group indicating their importance for the adaptation to dry environments where access to water may be an issue (Table 2 and Figure 6). The other four genes come from the precSeasonality analysis (Table 2), of which two are from the High group, indicating possible association to water restriction. Closer inspection of the High group populations (Meseret and Gijet) for PrecSeasonality confirms not only very little rainfall during the driest season (average 9.45 mm/m<sup>2</sup>) but also much lower rainfall in the wettest season (average 461 mm/m<sup>2</sup>) compared to that of all 25 populations (average 697 mm/m<sup>2</sup>).

The commonly detected *Fst* and XPEHH candidate genes affect many biological processes as expected from water scarcity stress, and they include a number of lncRNA genes with possible *cis*-regulatory roles on nearby genes (Table 2). Figure 6G highlights the chr3:71840000-73980000 region from precDQ analysis as it harbours a cluster of several candidate genes (n = 8; four common between *Fst* and XPEHH) and some of the strongest signals. SNPs surrounding *MANEA* show the largest difference in alternative allele frequency (dAAF). This gene has been related to behavioural issues like panic disorder in human

(Jensen, et al. 2014), and it is ubiquitously expressed in many tissues, but most prominently in the urinary bladder and the thyroid (ENTREZ). Another important candidate from the same region is *EPHA7*, which is involved in many gene ontology (GO) biological processes (Uniprot) including apoptotic process, axon guidance (in response to environmental cues), brain development, ephrin receptor signalling (important in kidney physiology), and nephric duct morphogenesis.

*HTR2C* is another common candidate gene from *Fst* and XPEHH (Table 2), detected from precSeasonality analysis (Supplementary Figure S11). This gene plays a crucial mediatory role in the stress-induced activation of the hypothalamic-pituitary-adrenal (HPA) axis (Brummett, et al. 2014). It is involved in many biological processes, including behavioural fear response, regulation of appetite, and regulation of nervous-system processes (Uniprot).

Genes that overlap with strong signals from a single approach ( $ZFst > 8$  or  $|XPEHH\_std| > 4$ ) in relation to water scarcity include: *AGTR1*, *TMEM206* and *ATF3*. *AGTR1* plays a role in the regulation of blood pressure, sodium retention by the kidney, and in kidney development (Uniprot). *TMEM206* is involved in pH-gated chloride channel activity that helps to maintain the body's acid-base balance (Uniprot). *ATF3* is a previously reported common stress-responsive transcription factor (Uniprot ; Zhao, et al. 2016).

We detected two common candidate genes from the precSeasonality Low group, i.e. the population showing low variation in rainfall pattern. *CACNB4* has a functional role in the calcium ion transport (Uniprot), whereas *ENSGALG00000053888* encodes a lncRNA with possible regulatory function. It is not clear what type of stress response these genes are involved with, but these may be associated with the adaptation to an environment with high ambient humidity. We observe that the relative humidity in the precSeasonality Low group (59 - 109%) is generally higher both in the wettest and driest quarters of a year compared to that in the High group (57 - 71%) (Supplementary Figure S8). Two other genes overlap with strong signals in populations experiencing greater rainfall or lower variation in annual rainfall: *PRIM2* (from the precDQ High group;  $ZFst > 8$ ) with a role in DNA replication and *GTDC1* (from the precSeasonality Low group;  $|XPEHH\_std| > 4$ ) showing ubiquitous expression among tissues (Uniprot). IPA analyses of the candidate genes from both the Low and High groups (Tables S6B-6D) as well as the overlap of the genes with known QTLs (Figure 3B, Supplementary Table S5) indicate their involvement in a wide range of biological processes.

The RDA analysis identified 105 candidate genes in relation to the precipitation variables, of which only seven genes were also detected by one method of SSA and a few candidates ( $n=7$ ) are linked to SNPs with relatively larger environmental correlation ( $r \geq 0.4$ ) (Supplementary Table S8). Many of these genes are directly involved in various stress response pathways or processes. For example, *GPC5* is involved in the regulation of the *Wnt* signalling pathway (Uniprot), which mediates stress granule assembly in cells (Lai, et al. 2016); *HMGCLL1* is involved in the biosynthesis of ketone bodies that play an important role in maintaining the body's redox homeostasis in response to environmental or metabolic stressors (Rojas-Morales, et al. 2020); *SLK*, *SLIT3* and *PHLPP1* have involvement in apoptotic processes (Uniprot); and *GDPD1* has been reported to be upregulated under drought stress in some plant species (Kotrade, et al. 2019). *GPC5* has also been found associated with renal disease (Okamoto, et al. 2015). Some other genes possibly have roles in broader physiological adjustments under stressful condition, e.g. *PPFIA2* – has involvement in nervous system processes, *MRPL46* – encodes a structural component of the mitochondrial ribosome, and several lncRNA genes with their potential regulation of nearby genes (Supplementary Table S8).

### ***Soil organic carbon - an indicator of source and abundance of food for scavenging chickens***

Soil organic carbon (SoilOrgC) affects the nature and abundance of animal biomass in the soil. A High SoilOrgC will be characterized by the presence of many earth-dwelling organisms such as insects and worms that are excellent sources of protein-rich food for chickens. Soils rich in organic carbon also provide fertile ground for wild vegetation and for growing crops - equally important for scavenging birds. Only two chromosomal regions (chr1: 197270000-197290000 and chr10: 6820000-6850000) and seven genes – all in the High SoilOrgC group - were identified in both *Fst* and XPEHH analyses (Figure 7). The SR in chr1 overlaps with a cluster of several heme-binding genes (*HBBA*, *HBE*, *HBE1* and *HBBR*) involved in oxygen carrier activity. The *HBE1* gene is also involved in GO biological process: response to organic cyclic compound and protein hetero-oligomerisation (Uniprot). The dAAF pattern is mostly homogeneous across these genes, but a few intronic SNPs from *HBE1* show the largest dAAF (Figure 7G). These genes are overexpressed in broilers with severe myopathic breast muscles, possibly as a response to insufficient oxygen and oxidative stress (Pampouille, et al. 2019). Accordingly, their expression may be adaptive in scavenging chickens in response to oxidative stress from food conversion in high SoilOrgC agro-ecology.

The chr10 region overlaps with two genes, *THSD4* and *ENSGALG00000053176* (*miRNA*). *THSD4* has peptidase activity, and the gene has been found in an *Fst*-based selective sweep between Red Junglefowl (RJF) and commercial birds in a previous study (Qanbari, et al. 2019). *THSD4* is also a candidate gene for a feed efficiency trait in dairy cattle (Yao, et al. 2013). It is likely that the peptidase activity of *THSD4* plays an essential role in the metabolism of protein-rich foods available in high SoilOrgC agro-ecologies. Located within *THSD4*, the *miRNA* gene may be postulated to have a regulatory effect on its expression.

Other candidates overlapping strong signals from a single approach in the High SoilOrgC group include *DCLK1* ( $ZFst > 10$ ) with protein kinase activity and possible involvement in the nervous system and forebrain development, and *GALNT7* ( $|XPEHH\_std| > 4$ ), involved in carbohydrate metabolic process (Uniprot). From the Low SoilOrgC group, four genes overlapped with a strong SR on chr33 (chr33: 6470000-6500000) ( $ZFst: 9 - 12$ ). These include *DRAP1* - involved in transcriptional regulation (Uniprot), *RELA* - a ubiquitously present transcription factor affecting many biological processes including cell growth, immunity, and apoptosis (Uniprot), *UQCC3* which plays an important role in ATP production by mitochondria (Uniprot) and *KAT5* - regulating many biological processes including autophagy under starvation condition (Uniprot). IPA analysis shows many similar molecular and cellular functions being affected by genes from both Low and High groups but contrasting processes include Cell Death and Survival in the Low group whereas Cellular Development, and Cellular Growth and Proliferation in the High group (Supplementary Table S6E), indicating the effects of abundance of food on chicken physiology.

RDA analysis has identified 166 candidate genes for SoilOrgC. Of these, 9 genes were also detected by one of the SSA methods and 36 genes showed  $r \geq 0.4$  (Supplementary Table S8). Many of these genes are involved in the development and processes of brain, eye, ear, and nervous system (e.g. *KIF5C*, *ZEB2*, *RAB5A*, *TENM3*, *GABRB3*, *MDGA1*, *ACVR2B*, *FARP1*, *SPARC*), and in mediating the senses of vision, smell, and taste (*ADGRA3*) – all of which are essential for successful foraging behaviour (Supplementary Table S8). Other important biological processes affected by the major candidates include: growth, development, and reproductive processes (*SPARC*, *NUMA1*, *CDH6*, *ITGA11*, *KIF23*, *PAPPA*, *ACVR2B*, *CDYL*), metabolic processes and feed conversion (*PEXI*, *PAPPA*, *FAM13A*, *EPB41*) and transcriptional regulation (*HMGA2*, *CMSS1*, *CCNC*, *COQ3*, *CDYL*, *ETV3*, *PABPC1* and several lncRNA genes).





pathway (Uniprot). Similarly, most other large SRs harbour many ncRNA genes (Supplementary Table S3).

Strong candidate genes from RDA analysis ( $r \geq 0.4$  or common RDA-SSA genes) are involved predominantly in nervous system processes and visual learning (*ITGB1*, *GABRG3*, *STAU2*), while some genes also have roles in metabolic, maintenance, and reproductive processes (*GDPD4*, *ITGB1*) (Supplementary Table S8).

### ***Shared candidates between environmental predictors***

We detected between 150 and 219 genes from sweep regions in relation to each environmental predictor (Table 1). Interestingly, about 15% of these genes (152 of 1008) are common to two or more environmental analyses (Supplementary Figure S14). The proportion of shared genes between environmental analyses varied between 0.3% and 14%. While these shared genes may represent pleiotropic effects or shared pathways of stress response as observed with IPA analysis (Supplementary Figure S14C), the low rate of overlap in general indicates that our environmental analyses have captured different components of environmental selective pressures that in turn have shaped genomes distinctively.

In a few cases, the same gene was a candidate in both Low and High groups for the same environmental analysis, e.g. *ZNF451* (precDQ), and four genes (*ADGRL3*, *CIS*, *CIR*, *HMGCLL1*) for the SoilOrgC parameter. These genes traverse multiple windows, with separate windows under selection in the two groups. Selection of different regulatory elements or use of alternatively spliced transcripts of the genes in the opposing groups may be responsible for the results. However, while intronic variants from these genes show generally the largest dAAFs, none are annotated as splice variants.

### ***Further validation of sweep regions***

To further validate the detected sweep regions, addressing in particular the possible effects of demography and population structure on selection signature signal, we performed an FLK test (Bonhomme, et al. 2010) on genome-wide SNPs based on the same four populations used for each environmental analysis. FLK corrects for the effects of population structure and demographic events due to drift by taking into account kinship matrix between populations before identifying loci that show outstanding variations in frequency. The outlier SNPs detected in this approach were then intersected with the sweeps from XPEHH and *Fst* analyses. The majority of the 843 SRs ( $n=807$ ; 96%) overlap with at least one FLK-outlier (P

< 0.05) (see Supplementary Table S3). Taking the most significant FLK outlier overlapping each of these regions, we checked for their consistency in allele frequency in the Low and High group populations (e.g. if the allele frequency of the SNPs are higher in each population from one extreme group compared to the populations in the other group). We find this holds true in 79% of the cases (n=635 of 807 SRs). All the strong candidate sweep regions discussed above, except two (an XPEHH region containing *TOGARAMI* gene in minTemp analysis and a common XPEHH-*FST* region containing *STS* and *PUDP* genes in LandUse analysis), were validated by this approach.

Last but not least, we wanted to confirm our sweep regions in independent populations. For this, we created a validation set - for each environmental variable - by taking a new environmentally similar population from one group (e.g. Low group) while taking the most extreme population (that was originally used) from the other group. We then checked for the consistency of allele frequency direction (as observed in the original sets) of the most significant FLK outlier representing a sweep region in the validation set. About 87% of SRs validated above (552 of 635) were found consistent in an independent population (see Supplementary Table S3). Again all the strong candidates discussed in the above sections that passed the first validation, could also be validated in an independent population, except two regions (See Table 2 and Supplementary Table S3 for the validation status of the SRs).

## Discussion

Changes in climatic condition, production environment, and customer demand are shifting the breeding goals for poultry from merely improving production traits to also incorporating welfare, environmental resilience, and disease resistance traits (Muchadeyi and Dzomba 2017). Free range, organic production is also gaining customer preference. Indigenous breeds, with their many adaptive traits including foraging ability, represent excellent genetic resources that can be harnessed for breeding improvement to cater for these emerging needs. Dissecting the genetic basis of environmental adaptation, however, is difficult due to the complexity of agro-climatic stressors posing as selection pressures. To address this issue, our study applied a powerful interdisciplinary approach to first, disentangle and identify the important agro-climatic drivers of adaptation from a large array of environmental parameters and then to identify the associated candidate regions, genes, and variants using multiple complementary genomic approaches. In the *Fst* and XPEHH-based selection signature analyses, we compared extreme populations in relation to single environmental parameters. Contrarily, in the RDA analysis we looked for genotype-environment association across the continuum of environmental parameters by simultaneously fitting all variables in the model.

This is the first study, to the best of our knowledge, to perform such rigorous and comprehensive analysis on a livestock species and more specifically on chicken.

Our study has detected strong adaptive signals in relation to high altitude induced stresses (viz. hypoxia, thrombosis, and cold temperature), water scarcity stress due to dry season, and for the first time, has identified the environmental proxies affecting scavenging conditions and associated genetic adaptations, reflecting the impact of the nature and abundance of food on foraging chickens. Interestingly however, we did not find notable strong signals for heat stress adaptation. It is possibly a legacy of the origin and history of African indigenous chickens, whose ancestors were native inhabitants of tropical South and South-East Asia and were already adapted to the hot and humid climates of these regions (Pitt, et al. 2016). However, when introduced to high elevation regions of Africa, chickens had to rapidly adapt to the challenges of their new environment, explaining why we detected more prominent selection signals in relation to altitude-induced stresses instead of heat-tolerance. As a proof of concept, we specifically looked at two heat shock genes, *HSP70* and *HSP90*, which were found in a recent study to be overexpressed in Brazilian backyard tropical chickens compared to commercial birds (Cedraz, et al. 2017). We find very little allele frequency difference for SNPs across these two genes between the High and Low temperature groups. Although a number of SNPs ( $n=19$ , all from *HSP90*) have reached near fixation ( $AAF>0.9$ ) in the High temperature group, these variants are also present at similar high frequency in other Ethiopian chicken populations including the Low temperature group. This suggests that the same haplotype of the above genes are present across all Ethiopian populations. Given little genetic variation in these genes, it is highly likely that their expression patterns are regulated by epigenetic elements. This gains support from the observation in previous studies that thermal manipulation during chicken embryonic development improves thermo-tolerance later in life (Nassar and Elsherif 2018). Further studies combining transcriptomic and epigenetic data, however, will be required to establish this.

Comparison of our results with the few other available adaptation studies on chicken found little overlap among the candidate genes. For instance, similar to our study, Zhang et al. (2016) reported candidate genes affecting cardiovascular and respiratory systems, and immune responses in Tibetan highland chickens as adaptations to hypoxia, but none are common with our set. This result may be attributed to a number of factors. First, rapid adaptation often works on the “standing variations” in a population (Rees, et al. 2020). Different demographic history of the African and Tibetan chickens may have offered distinct standing variations for the natural selection to work on. As a result, even though the adaptive

responses were similar in both instances, the associated genes were different. Moreover, epistatic interactions and pleiotropic effects of genes may favour selection of one gene over another in different geographic areas (Ostman, et al. 2012). Selection of different genes in different populations in relation to high altitude has also been observed in human studies (Rees, et al. 2020). These results illustrate the plasticity of the genome in its response to environmental selection pressures.

Among the identified candidate genes for each environmental predictor, only a few may be considered as strong candidates, as those were detected by multiple approaches or coincided with extreme signals from a single approach. It suggests that these environmental adaptations are predominantly under oligogenic control - an observation supported by other studies as well (Bell 2009; Rees, et al. 2020). Also, in many instances, we have found important biologically relevant candidate genes residing in the same selection region or at close proximity; e.g. we detected nine major candidate genes associated with hypoxia, low temperature, and thrombosis from a single SR in chr5, cluster of eight genes from chr3 in relation to water scarcity stress, and cluster of four heme-binding genes detected in chr1 from the SoilOrgC analysis. Such gene clusters may actually be at the root of rapid adaptation to extreme environment by being under the genetic control of one or a few regulatory variants only. While further deeper investigation are required, including the identification of the causative mutations, such results provide a new framework to explain the rapid adaptation and success of an ubiquitously adapted species like chicken to different agro-ecologies. This finding has direct implication for achieving fast and sustainable improvements in new breeding programmes aiming to produce chicken lines that will be both productive and well-adapted to the African backyard farming system. With predominantly oligogenic regulation of adaptive traits, the best option for achieving genetic progress would be to combine Genomic Estimated Breeding Value (GEBV) for production traits with a targeted marker-associated selection for environmentally adaptive regions of the genome.

Our study is reporting a low level of overlaps between SSA and RDA results, with none of the strongly supported candidate sweep regions (e.g. regions common to XPEHH and *Fst*) intersecting with RDA outliers. Also, most RDA outliers showed only low to moderate levels of environmental correlation (generally  $r < 0.5$ ). In a context of extreme environments, a strong selection for adaptation will be expected, leading to rapid fixation or near fixation of haplotypes. Such a signal of positive selection will be detected by XPEHH and *Fst* analyses. On the opposite, RDA can only detect candidates that are showing linear association across an environmental gradient and not any non-linear response that may have occurred under

extreme conditions. Much evidence of non-linear gene-environment interaction (G x E) has been observed in agricultural and livestock species as well as in human disease studies (Ma, et al. 2011; Yang 2014; Carvalheiro, et al. 2019). Yang (2014) indeed suggests that linear functions would account for a small portion of G x E variation when a wide range of environmental conditions are tested, which is the case for the Ethiopian landscape, with its highly diverse agro-ecological niches for chickens. Therefore the SSA and RDA approaches used in the present study should be seen as complementary.

Although ENM has been employed extensively for different purposes in wild species and plants, its application in livestock has been negligible. Ours is among the very few early studies that have employed ENM for dissecting livestock ecosystems. This study specifically exemplifies the use of ENM as a powerful predictive tool for adaptation analysis in livestock. Uniquely, it allowed us to first identify the key environmental drivers of selection pressure and then to investigate the corresponding genome responses, instead of the contrary approach commonly applied in animal adaptation studies. Apart from climatic and geographic factors e.g. temperature, elevation, and rainfall, our study identifies other environmental factors like soil and land use properties as important parameters in the ecosystems of foraging chickens. For the first time we show that these variables can be considered as proxies of scavenging conditions of indigenous chickens. We envisage many other different applications of ENM for livestock. For example, environmental characterization of populations, as shown in the present study, can be the basis for characterizing or even defining livestock ecotypes. Along with the agro-climatic data, any other environmental variable (e.g. epidemiological) may be included (Vajana, et al. 2018). Habitat suitability mapping can be a useful approach for predicting suitable areas for introducing exotic breeds (Lozano-Jaramillo, et al. 2019) or for predicting the impact of climatic change on livestock habitats. These can be extremely valuable in conservation of important livestock genetic resources to meet future demand.

## **Materials and Methods**

### ***Sampling design***

Chicken samples analyzed here consisted of 224 birds from 23 populations (villages or Kebeles) collected for this study and 21 samples from two other populations (Horro and Jarso) from a previous study (Lawal, et al. 2018). The sampled populations represent different agro-ecological zones (HarvestChoice 2015) distributed across 13 districts of Ethiopia and six of the nine national regional states (Supplementary Table S1). Blood samples from 8-10 chickens per population were collected with the logistical support and agreement of the Ethiopian Ministry of Agriculture and Ethiopian Institute of Agricultural Research (EIAR).

All animal works were approved by the Institutional Animal Care and Use Committee of the International Livestock Research Institute (IREC2017-26). Geographic coordinates (latitude and longitude) of the sampling villages were recorded, providing the entry points for the collection of environmental data for ENM.

### ***Environmental data***

Environmental data across the Ethiopian landscape were obtained from several public databases at a spatial resolution of 30 arc-seconds ( $\sim 1 \text{ km}^2$ ) (see Supplementary Table S2 and Supplementary Methods for details).

For each population, we originally recorded a single central coordinate (e.g. market place) in the village. However, to capture the environmental condition for the village, we selected nine additional geographic coordinates in separate grids surrounding the actual recorded location for each population. These grids were within 1.2 km from each other and were located using Google Earth Pro v7.3. The environmental data were extracted using the ‘raster’ R package, resulting in a total of 250 coordinate points from all 25 populations and these were considered as “occurrence points” for ENM.

### **Ecological Niche Modelling**

ENM was performed using MaxEnt v3.4.1 (Phillips, et al. 2006). The R package ‘MaxentVariableSelection’ (Jueterbock, et al. 2016) was used to shortlist the environmental variables. The optimized model parameters used for ENM included three Feature Classes, viz. Hinge, Quadratic and Product and a Regularisation Multiplier value of 3.5. (Supplementary Figure S5; further details in Supplementary method). The predictive power of the models was assessed using the Area Under ROC Curve (AUC) values (Supplementary Figure S6A) and the importance of the variables in the test and training data was assessed with a jackknife assay (Supplementary Figure S6B). Habitat suitability maps were generated using MaxEnt’s cumulative output.

### **Whole-genome sequencing and data processing**

WGS was performed on an Illumina HiSeqX platform in paired-end mode with a read length of 150 bp and average coverage of  $\sim 40X$ . Sequence reads were mapped against the GRCg6a reference assembly using BWA-mem v.0.7.15-r1140 (Li 2013). Variant calling was performed following the GATK v3.4 best practice protocol (Broad Institute 2015) involving the Haplotype Caller method and Joint Genotyping of all samples together. Initial variant

filtration was performed using the VQSR approach (Haas 2015) in GTAK using 1 M validated SNPs (Kranis, et al. 2013) and ~20 M known chicken SNPs (Ensembl release 92).

Genomic analyses were performed using only autosomal variants. Individuals with high relatedness ( $> 0.9$ ) were removed based on relatedness calculation in VCFtools v0.1.15 (Danecek, et al. 2011). SNPs that did not pass the following criteria were excluded: genotype quality  $\geq 15$ , depth of coverage  $\geq 3$  and missing genotype rate  $< 20\%$ . Nucleotide diversity was calculated using the `--site-pi` option in VCFtools. PCA was performed using the Eigenstrat method in Eigensoft v6.1.4 software (Price, et al. 2006). Admixture analysis was performed in ADMIXTURE programme v1.3.0 (Alexander, et al. 2009) with  $K$  values 1-5. The best  $K$  value was chosen based on the cross-validation method (Figure S1).

### Selection signature analysis

Extreme Low and High groups of populations were chosen by ranking the 25 populations for each environmental parameter and selecting two populations from each end of the gradations. Combining two populations per group was a deliberate attempt to mitigate any potential bias from population structure and demographic events (see Supplementary method “*Mitigating the effects of population structure and demographic events on selection signature*”).

SSA was performed in overlapping sliding windows with at least 10 SNPs.  $F_{st}$  analyses were performed in VCFtools using the Weir and Cockerham approach (Weir and Cockerham 1984). The weighted  $F_{st}$  values were standardized ( $ZF_{st}$ ) to allow setting the same threshold across analyses. XPEHH analyses were carried out using the Hapbin package (Maclean, et al. 2015) after removing SNPs with missing genotypes. XPEHH analyses were first performed for individual SNPs and then mean values were calculated within windows for both the standardized XPEHH (XPEHH\_std) and the absolute value of XPEHH\_std. Fewer windows were analyzed in XPEHH (91.2K - 91.6K) compared to  $F_{st}$  (92.4K - 92.5K) due to the application of some extra filtration steps (see Supplementary Methods for details). Empirical  $P$ -values were calculated for both  $F_{st}$  and XPEHH by ranking the windows based on each metric.

Pooled heterozygosity ( $H_p$ ) (Rubin, et al. 2010) in windows was calculated for Low and High groups separately to provide an extra source of support for the directionality of selection.  $H_p$  results were consulted when directionality could not be established from the XPEHH result unambiguously or because those windows were not analyzed in XPEHH. Windows were removed from the downstream analysis when the directionality could not be resolved.





## Data availability

The whole genome sequence data used in this study have been deposited in the European Nucleotide Archive (ENA) under study accession numbers PRJEB39275.

## Figure legends

**Figure 1.** (A-B) Sampling location of Ethiopian indigenous chicken populations in relation to variation in elevation and agro-ecological zones – AEZ [62]; (C) PCA plots of the populations based on 14 million autosomal SNP; (D) Admixture analysis results for  $K$  values between 2 and 5 (best  $K = 3$ ).

**Figure 2.** (A) Relative contribution of the six environmental variables selected based on Ecological Niche Modelling; (B) PCA plots showing the distribution of the 25 Ethiopian chicken populations in the environmental space provided by the six selected environmental parameters; (C) Suitability maps of the 25 Ethiopian chicken populations produced by ENM using six selected environmental variables. Hotter colours (towards red spectrum) indicate more suitable conditions.

**Figure 3.** (A) Stacked bar plot showing the split of candidate sweep windows based on Low/High groups and detection methods; (B) Overlap of candidate genes with known QTLs from chicken QTLdb.

**Figure 4:** (A) Variance explained by RDA axes; (B) PCA plot based on RDA axes 1 and 2; (C) Box plots showing the distribution of correlation values of outlier SNPs associated with different environmental predictors; (D) Stacked bar graph showing number of genes linked to RDA outlier SNPs and their split based on environmental correlation; only genes (with  $r \geq 0.3$ ) were finally considered as candidates; (E) Venn diagram showing overlaps of candidate genes between selection signatures and RDA analyses.

**Figure 5:** Selection signature analysis results for minTemp. (A) Scatter plot of standardized values of XPEHH versus  $F_{st}$ . (B) Length distribution of selective Sweep Regions (SRs). (C-D) Box plots showing the distribution of  $F_{st}$  and XPEHH metrics for non-candidate and candidate windows. (E-F) Manhattan plots for the XPEHH and  $F_{st}$  analyses; common windows are marked with asterisk and gene names from common windows are shown in red. (G) Closer look of the common  $F_{st}$ /XPEHH region - chr5:17250000-17280000 - with SNPs showing allele frequency difference (dAAF)  $> 0.5$  between the Low (AlfaMidir, NegasiAmba) and High (Hugub, Mihquan) groups. Genes common between  $F_{st}$  and XPEHH are shown in red.

**Figure 6:** Selection signature analysis results for precDQ. (A) Scatter plot of standardized values of XPEHH versus *Fst*. (B) Length distribution of selective Sweep Regions (SRs). (C-D) Box plots showing the distribution of *Fst* and XPEHH metrics for non-candidate and candidate windows. (E-F) Manhattan plots for the XPEHH and *Fst* analyses; common windows are marked with asterisk and gene names from common windows are shown in red. (G) Closer look of the region – chr3:71840000-73980000 with SNPs showing allele frequency difference (dAAF) > 0.5 between the Low (Gijet, Kido) and High (Kumato, Loya) groups. Genes common between *Fst* and XPEHH are shown in red.

**Figure 7:** Selection signature analysis results for SoilOrgC. (A) Scatter plot of standardized values of XPEHH versus *Fst*. (B) Length distribution of selective Sweep Regions (SRs). (C-D) Box plots showing the distribution of *Fst* and XPEHH metrics for non-candidate and candidate windows. (E-F) Manhattan plots for the XPEHH and *Fst* analyses; common windows are marked with asterisk and gene names from common windows are shown in red. (G) Closer look of the common *Fst*/XPEHH region chr1:197270000-197290000- with SNPs showing allele frequency difference (dAAF) > 0.5 between the Low (Loya, Kumato) and High (Meseret, Gijet) groups. Genes common between *Fst* and XPEHH are shown in red.

## Tables

**Table 1: Summary table describing the Low and High groups and selection signatures results from different environmental analyses**

Environmental variables	Low group populations and environmental stats (mean $\pm$ SD)	High group populations and environmental stats (mean $\pm$ SD)	No. of selective sweep regions (SRs)	Candidate genes (common candidates from XPEHH & Fst; common candidates between SSA and RDA*)
Minimum temperature of the coldest month (minTemp)	AlfaMidir, NegasiAmba (n=20) Min.T (°C): 1.83 $\pm$ 1.07 Max.T (°C): 20.61 $\pm$ 1.20 Elevation (M.A.S.L.): 3219 $\pm$ 192	Hugub, Mihquan (n=20) Min.T (°C): 12.67 $\pm$ 0.92 Max.T (°C): 36.11 $\pm$ 1.18 Elevation (M.A.S.L.): 1077 $\pm$ 276	114	209 (10; 2)
Precipitation of the wettest quarter (precWQ)	Hugub, Jarso (n=24) 314.05 $\pm$ 40.58 mm/m <sup>2</sup>	Gafera, Gesses (n=19) 1088.65 $\pm$ 18.28 mm/m <sup>2</sup>	107	150 (0; 1)
Precipitation of the driest quarter (precDQ)	Gijet, Kido (n=18) 9.40 $\pm$ 0.97 mm/m <sup>2</sup>	Kumato, Loya (n=19) 120.90 $\pm$ 15.80 mm/m <sup>2</sup>	168	217 (10; 3)
Precipitation seasonality (precSeasonality)	Loya, Kumato (n=19) 47.8 $\pm$ 3.62 mm/m <sup>2</sup>	Meseret, Gijet (n=19) 141.20 $\pm$ 2.97 mm/m <sup>2</sup>	152	193 (4; 3)
Soil Organic Carbon (SoilOrgC)	Loya, Kumato (n=19) 71.7 $\pm$ 13.52 g/kg at depth of 0 m	AlfaMidir, Adane (n=20) 145.80 $\pm$ 7.49 g/kg at depth of 0 m	145	219 (7; 9)
LandUse	Gesses, Kido (n=18) 1.28 $\pm$ 1.65 (%)	Meseret, AlfaMidir (n=20) 39.56 $\pm$ 1.67 (%)	157	190 (7; 2)

\* Common genes between one of the SSA approaches and RDA; none of the candidate genes were commonly detected by all three approaches (XPEHH, *FST* and RDA).

**Table 2: Genes detected by both XPEHH and *Fst* in relation to environmental adaptations. Genes present in close proximity on the same chromosome are shown as clusters (in a few cases this involves separate sweep regions).**

Genes and sweep regions	Relevant biological functions for the candidate genes
<i>Adaptation to high altitude stresses (hypoxia, thrombosis and cold tolerance) (Low minTemp)</i>	
<b>Chr5:17230000-17290000</b> \$* <b>Gene cluster:</b> <i>CLP1, YPEL4, ENSGALG00000007381, UBEL6, TIMM10, RTN4RL2, SLC43A3, PGR2/3, P2RX3</i>	<i>CLP1</i> – linked to cardiovascular function and cardiac muscle hypertrophy (Espinoza-Derout, et al. 2007); <i>YPEL4</i> - role in pulmonary diseases (Truong, et al. 2018); <i>P2RX3</i> –blood coagulation, responses to cold, heat and hypoxia (Uniprot); <i>ENSGALG00000007381</i> - blood coagulation (Reactome); <i>SLC43A3</i> - roles in lung tissue repair and growth under oxidative stress (Furukawa, et al. 2015); <i>PGR2/3</i> – immune response (Uniprot); <i>RTN4RL2</i> – roles in axon regeneration and protection of motoneurons against apoptosis (Uniprot), and upregulated in myopathy-affected condition in broiler possibly in response to hypoxia (Marchesi, et al. 2019); <i>UBE2L6</i> : involved in protein ubiquitination pathway (24) and downregulated in cells exposed to hypoxia (28); <i>TIMM10</i> - imports transmembrane proteins into the mitochondrial inner membrane (Uniprot); downregulated in hypoxic cells (Lai, et al. 2016).
<b>Chr18:5090000_5190000</b> \$* <i>UTP18</i>	<i>UTP18</i> - RNA binding and involved in pre-18S rRNA processing (24); belongs to a gene-network targeted by microRNAs differentially expressed in human hypoxic cardiomyocytes cell line (Lee, et al. 2018)
<i>Water scarcity adaptation (Low precDQ)</i>	
<b>Chr3:71840000-73950000</b> \$* <b>(consists of several SRs)</b> <b>Gene cluster:</b> <i>ENSGALG00000036204, ENSGALG00000025686, MANEA, EPHA7</i>	<i>ENSGALG00000036204</i> – a lncRNA with possible cis-regulatory role on nearby genes; e.g. the nearest gene is <i>MMS22L</i> with role in DNA damage repair process (Uniprot); <i>ENSGALG00000025686</i> - U6 spliceosomal RNA with possible role in post-transcriptional modification; <i>MANEA</i> – associated with panic disorder (Jensen, et al. 2014); <i>EPHA7</i> – involved in many functions e.g. apoptotic process, axon guidance, brain development, ephrin receptor signalling pathway, and nephric duct morphogenesis (Uniprot)
<b>Chr3:106430000-106510000</b> \$* <i>MSRA</i>	<i>MSRA</i> -Cellular protein modification, protein repair, response to oxidative stress (Uniprot).
<b>Chr4:74170000-74300000</b> \$* <b>Gene cluster:</b> <i>ENSGALG00000048521,</i>	These lncRNA genes possibly have cis-regulatory functions on nearby genes; a plausible nearby target is <i>PPARGCIA</i> , which is involved in many biological functions.

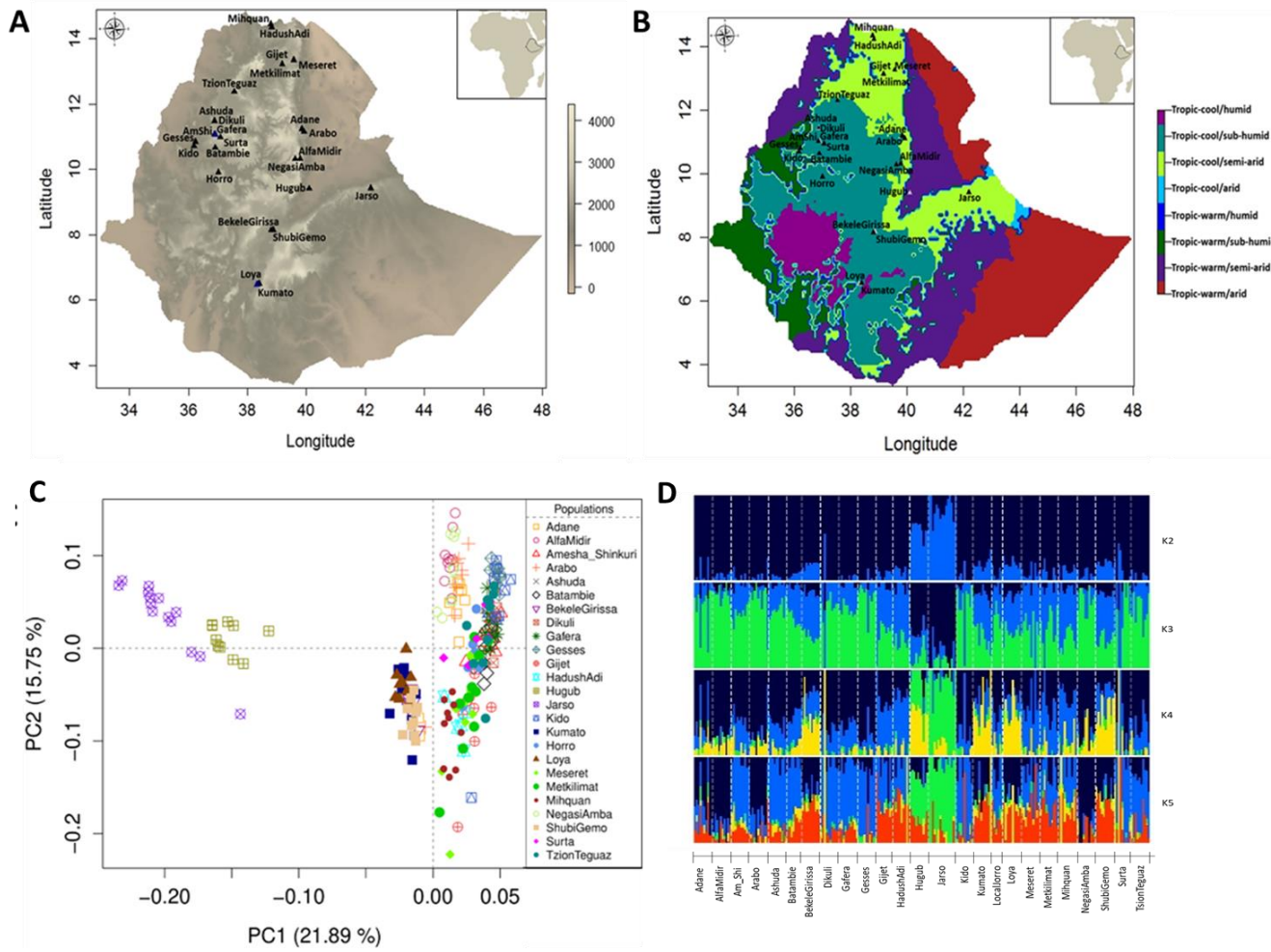
<i>ENSGALG00000050078,</i> <i>ENSGALG00000046053</i>	
<b>Chr6:25040000-25070000</b> \$* <i>SLK</i>	<i>SLK</i> - mediates apoptosis (Uniprot)
<b>Chr11:18110000-18130000</b> \$* <i>BANP</i>	Multicellular organism development, transcriptional regulation, regulation of signal transduction (Uniprot)
<b><i>Adaptation to high precipitation seasonality: possible adaptation to water scarcity</i></b>	
<b>Chr4:2730000-2750000</b> \$* <i>HTR2C</i>	Many functions e.g. behavioural fear response, regulation of appetite, regulation of corticotropin-releasing hormone secretion and nervous system processes (Uniprot).
<b>Chr4:74280000-74310000</b> \$* <i>ENSGALG00000051573</i>	A lncRNA with possible cis-regulatory functions; the nearest protein coding gene is <i>ENSGALG00000040208</i>
<b><i>Possible adaptation to excess rainfall and humidity (Low precSeasonality)</i></b>	
<b>Chr2:11400000_11410000</b> \$* <i>ENSGALG00000053888</i>	A lncRNA with possible regulatory functions; the nearest gene, <i>YTHDF3</i> has role in positive regulation of translation (Uniprot).
<b>Chr7:35360000-35400000</b> \$* <i>CACNB4</i>	Calcium transport; ion transport (Uniprot)
<b><i>Scavenging adaptation to rich source of insect, worm and plant based food (High SoilOrgC)</i></b>	
<b>Chr1:197230000-197310000</b> \$ <b>Gene cluster:</b> <i>HBBA, HBE, HBE1, HBBR,</i> <i>ENSGALG00000052767</i>	<i>HBBA, HBE, HBE1 and HBBR</i> – involved in heme binding, oxygen carrier activity, cellular oxidant detoxification, protein hetero-oligomerization, response to organic cyclic compound (Uniprot). <i>ENSGALG00000052767</i> – novel protein coding
<b>Chr10:6820000-6870000</b> \$* <b>Gene cluster:</b> <i>THSD4,</i> <i>ENSGALG00000053176</i>	<i>THSD4</i> – has peptidase activity (Uniprot) with possible association with feed efficiency traits (Yao, et al. 2013); <i>ENSGALG00000053176</i> is a MiRNA with possible role in RNA silencing and post-transcriptional regulation of gene expression.
<b><i>Scavenging adaptation to low surplus of crop and grain-based food (Low LandUse)</i></b>	
<b>Chr1:127750000-127980000</b> <b>Gene cluster:</b> <i>STS, PUDP</i>	<i>STS</i> - Lipid and steroid metabolism (Uniprot); <i>PUDP</i> - Nucleotide metabolic process (Uniprot).
<b>Chr1:128960000_129350000</b> \$* <i>ENSGALG00000052489</i>	Novel protein coding gene
<b>Chr3:34260000-34320000</b> \$* <b>Gene cluster:</b> <i>SMYD3, KIF26B</i>	<i>SMYD3</i> - Role in transcriptional regulation as a member of an RNA polymerase complex and in cellular response to dexamthasone stimulus (Uniprot); <i>KIF26B</i> –role in cell signalling (Uniprot).
<b>Chr4:56140000-56170000</b> \$ <i>NDST4</i>	<i>NDST4</i> - Strong association with low abdominal fat content in chicken (Uniprot).
<b><i>Scavenging adaptation to crop and grain rich food (High LandUse)</i></b>	

<b>Chr4:75690000-75810000</b> \$*	<i>NCAPG</i> - Cell division, mitotic chromosome condensation (Uniprot).
<i>NCAPG</i>	

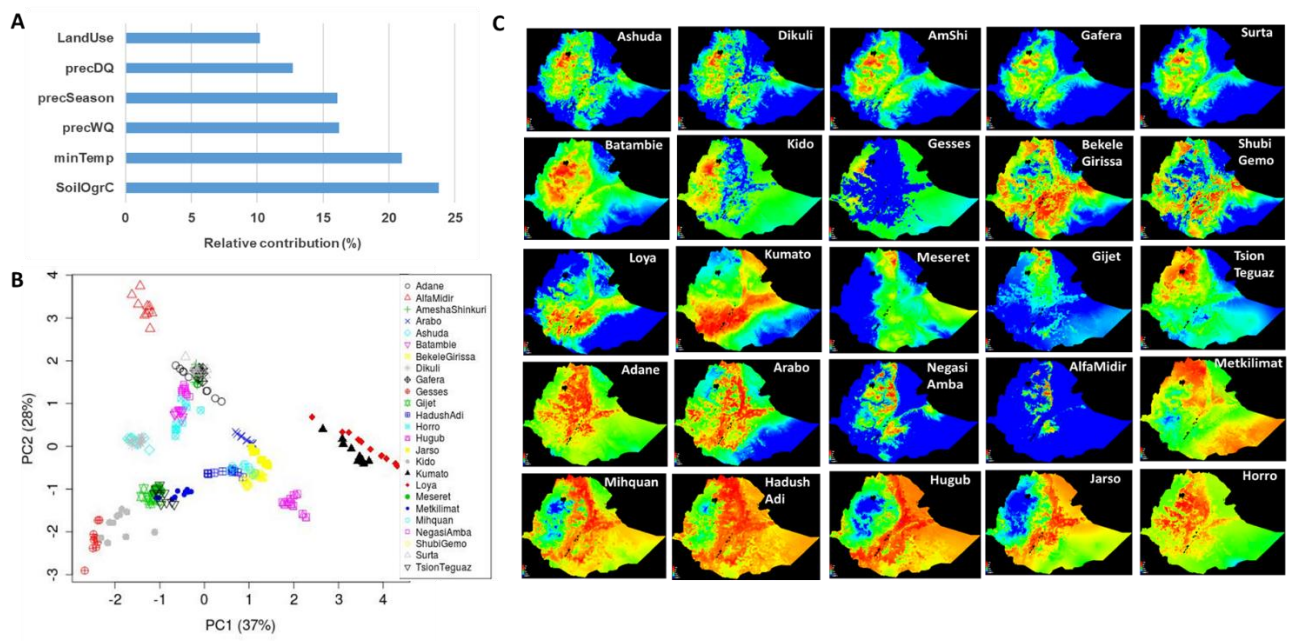
<sup>§</sup> Regions intersecting with highly significant FLK SNPs ( $P < 0.01$ ) and showing consistent pattern of allele frequency in each Low and High population.

\*Regions successfully validated in a new population (i.e. overlapping significant FLK SNP showing consistent pattern of allele frequency with at least 15% difference in allele frequency between Low and High populations in the validation set).

# Figures

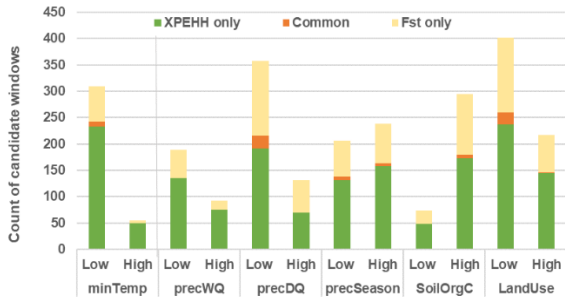
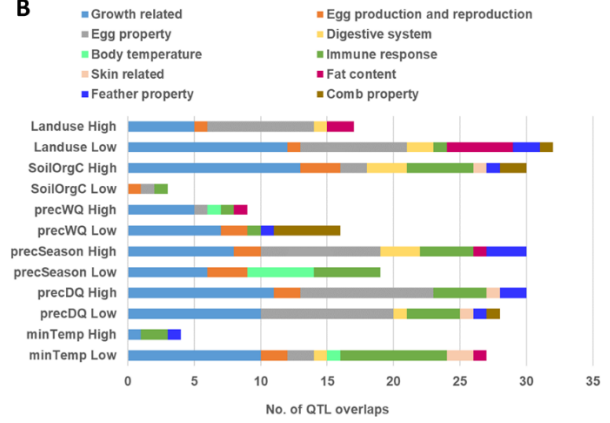


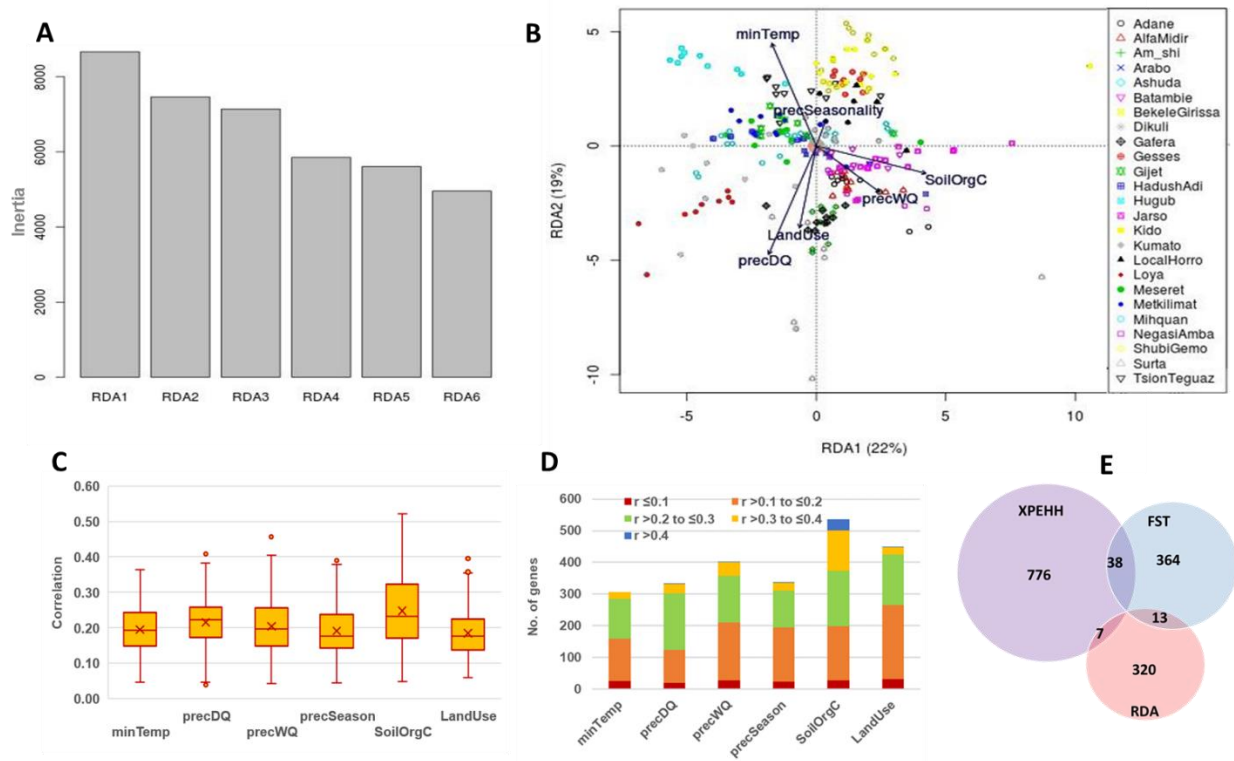
**Figure 1.**



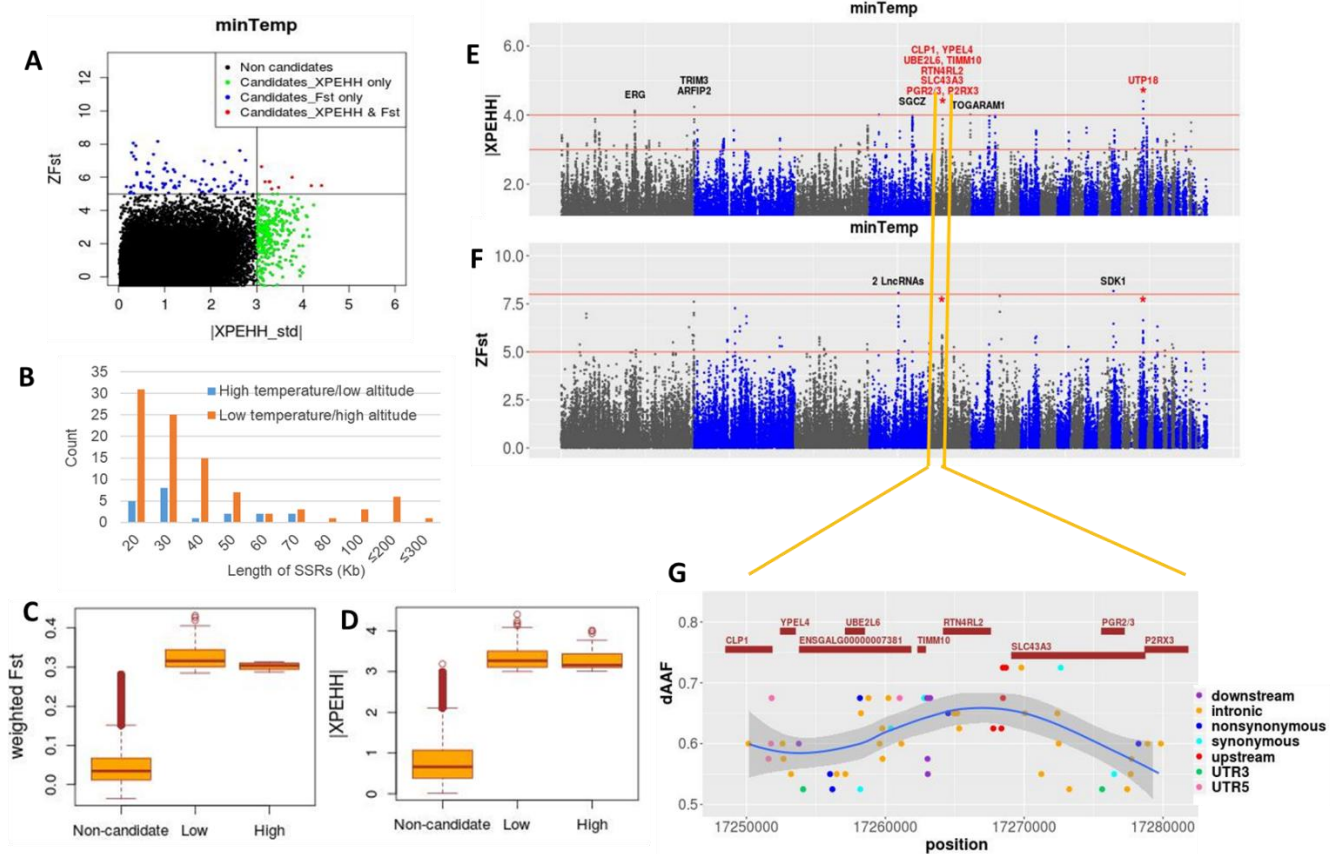
**Figure 2.**



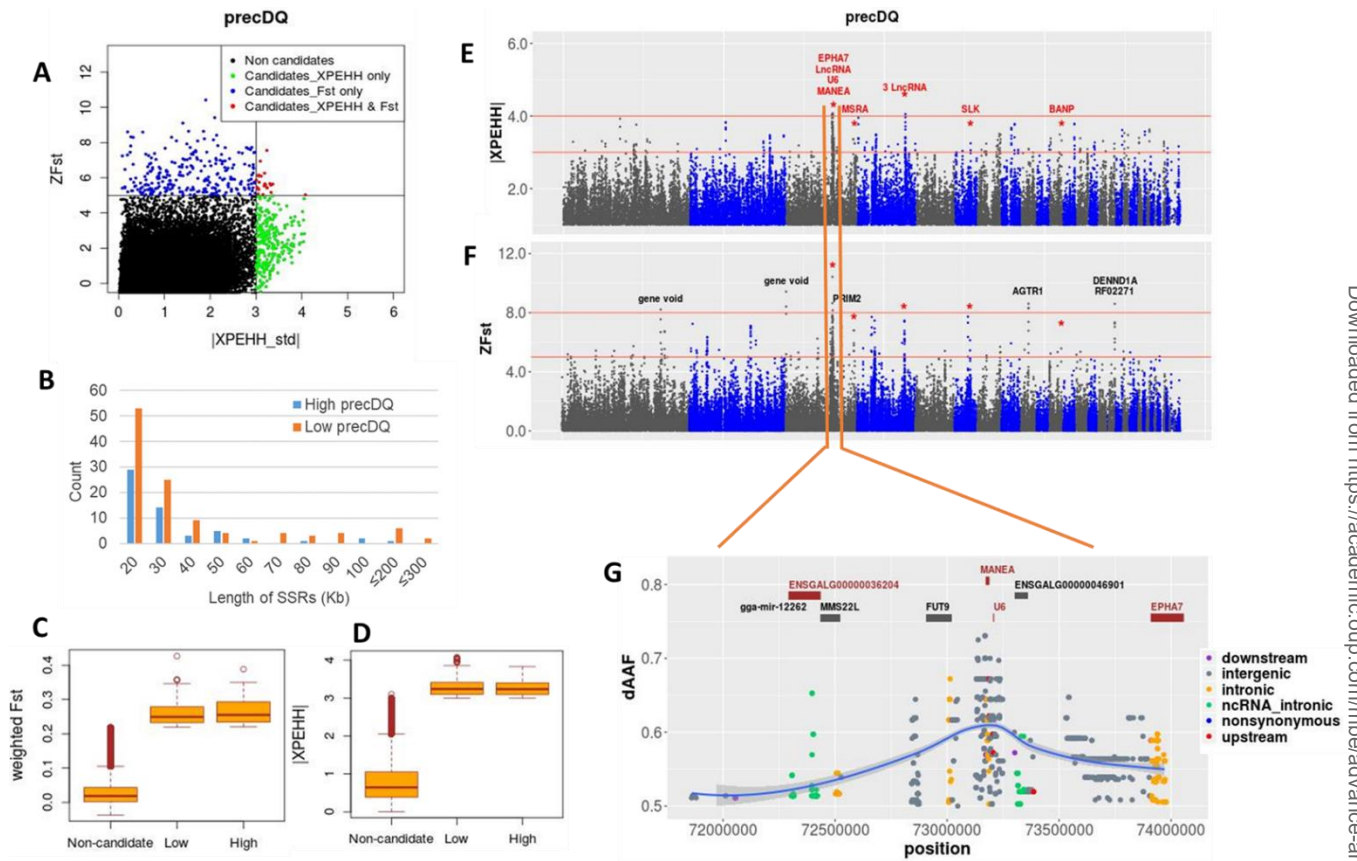
**A****B****Figure 3.**



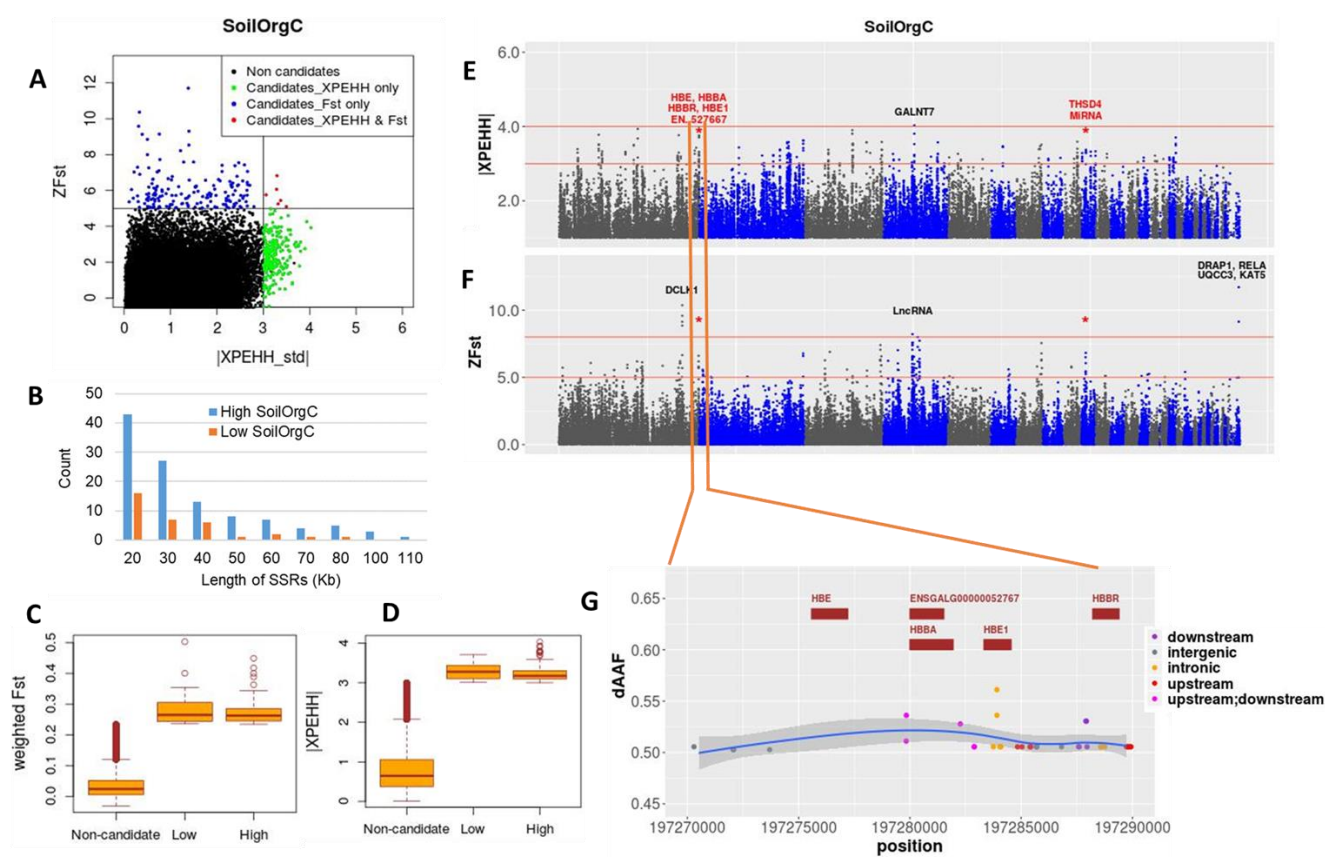
**Figure 4.**



**Figure 5.**



**Figure 6.**



**Figure 7.**



- Espinoza-Derout J, Wagner M, Shahmiri K, Mascareno E, Chaqour B, Siddiqui MA. 2007. Pivotal role of cardiac lineage protein-1 (CLP-1) in transcriptional elongation factor P-TEFb complex formation in cardiac hypertrophy. *Cardiovasc Res.* 75:129-138.
- Fazzini M, Bixci C, Billi P. 2015. The climate of Ethiopia; In: Landscapes and Landforms of Ethiopia, World Geomorphological Landscapes; P. Billi (ed.), DOI 10.1007/978-94-017-8026-1\_3, © Springer Science+Business Media Dordrecht 2015.
- Forester BR. 2019. Detecting multilocus adaptation using Redundancy Analysis (RDA); [https://popgen.nescent.org/2018-03-27\\_RDA\\_GEA.html](https://popgen.nescent.org/2018-03-27_RDA_GEA.html); Accessed on 24/11/2019.
- Furukawa J, Inoue K, Maeda J, Yasujima T, Ohta K, Kanai Y, Takada T, Matsuo H, Yuasa H. 2015. Functional identification of SLC43A3 as an equilibrative nucleobase transporter involved in purine salvage in mammals. *Sci Rep.* 5:15057.
- Gambhir RPS, Anand V, Khatana SS, Bedi VS. 2014. A Brief Review of High Altitude Thrombosis. *Indian J Vasc Endovasc Surg.* 1 (1):20-23.
- Getu A. 2014. Review on Ethiopian poultry origin, domestication, classification and characterization of its production systems. *Middle East J Sci Res.* 22 (7).
- Haas B. 2015. Variant Quality Score Recalibration; <https://docs.google.com/file/d/0B2dK2q40HDWesEpwRkNVQM4wdkE/preview>; Accessed on 23/11/2019.
- HarvestChoice. 2015. AEZ (16-class, 2009), [http://harvestchoice.org/data/AEZ16\\_CLAS](http://harvestchoice.org/data/AEZ16_CLAS). Accessed on 23/11/2019.
- Hopfl G, Ogunshola O, Gassmann M. 2003. Hypoxia and high altitude - The molecular response. *Hypoxia: Through the Lifecycle* 543:89-115.
- Izadnia HR, Tahmoorespur M, Bakhtiarizadeh MR, Nassiri M, Esmailkhanien S. 2019. Gene expression profile analysis of residual feed intake for Isfahan native chickens using RNA-SEQ data. *Ital J Anim Sci.* 18:246-260.
- Jensen KP, Stein MB, Kranzler HR, Yang BZ, Farrer LA, Gelernter J. 2014. The alpha-endomannosidase gene (MANEA) is associated with panic disorder and social anxiety disorder. *Transl Psychiatry* 4:e353.
- Jueterbock A, Smolina I, Coyer JA, Hoarau G. 2016. The fate of the Arctic seaweed *Fucus distichus* under climate change: an ecological niche modeling approach. *Ecol Evol.* 6:1712-1724.
- Kotrade P, Sehr EM, Wischnitzki E, Bruggemann W. 2019. Comparative transcriptomics-based selection of suitable reference genes for normalization of RT-qPCR experiments in drought-stressed leaves of three European *Quercus* species. *Tree Genet Genomes* 15:38.
- Kranis A, Gheyas AA, Boschiero C, Turner F, Yu L, Smith S, Talbot R, Pirani A, Brew F, Kaiser P, et al. 2013. Development of a high density 600K SNP genotyping array for chicken. *BMC Genomics* 14:59.
- Lai MC, Chang CM, Sun HS. 2016. Hypoxia Induces Autophagy through Translational Up-Regulation of Lysosomal Proteins in Human Colon Cancer Cells. *PLoS One* 11(4):e0153627.
- Lawal RA, Al-Atiyat RM, Aljumaah RS, Silva P, Mwacharo JM, Hanotte O. 2018. Whole-Genome Resequencing of Red Junglefowl and Indigenous Village Chicken Reveal New Insights on the Genome Dynamics of the Species. *Front Genet.* 9:264.
- Lee WH, Tsai MJ, Chang WA, Wu LY, Wang HY, Chang KF, Su HM, Kuo PL. 2018. Deduction of novel genes potentially involved in hypoxic AC16 human cardiomyocytes using next-generation sequencing and bioinformatics approaches. *Int J Mol Med.* 42:2489-2502.

- Li H. 2013. Aligning sequence reads, clone sequences and assembly contigs with BWA-MEM. arXiv 1303.3997v1 [q-bio.GN].
- Lindholm-Perry AK, Sexten AK, Kuehn LA, Smith TPL, King DA, Shackelford SD, Wheeler TL, Ferrell CL, Jenkins TG, Snelling WM, et al. 2011. Association, effects and validation of polymorphisms within the NCAPG-LCORL locus located on BTA6 with feed intake, gain, meat and carcass traits in beef cattle. *BMC Genet.* 12:103.
- Lozano-Jaramillo M, Bastiaansen JWM, Dessie T, Komen H. 2019. Use of geographic information system tools to predict animal breed suitability for different agro-ecological zones. *Animal* 13:1536-1543.
- Ma M, Shen MM, Qu L, Dou TC, Guo J, Hu YP, Lu J, Li YF, Wang XG, Wang KH. 2019. Genome-wide association study for carcass traits in spent hens at 72 weeks old. *Ital J Anim Sci.* 18:261-266.
- Ma SJ, Yang LJ, Romero R, Cui YH. 2011. Varying coefficient model for gene-environment interaction: a non-linear look. *Bioinformatics* 27:2119-2126.
- Ma Y, Ding X, Qanbari S, Weigend S, Zhang Q, Simianer H. 2015. Properties of different selection signature statistics and a new strategy for combining them. *Heredity* 115:426-436.
- Macleán CA, Hong NPC, Prendergast JGD. 2015. hapbin: An Efficient Program for Performing Haplotype-Based Scans for Positive Selection in Large Genomic Datasets. *Mol Biol Evol.* 32:3027-3029.
- Marchesi JAP, Ibelli AMG, Peixoto JO, Cantao ME, Pandolfi JRC, Marciano CMM, Zanella R, Settles ML, Coutinho LL, Ledur MC. 2019. Whole transcriptome analysis of the pectoralis major muscle reveals molecular mechanisms involved with white striping in broiler chickens. *Poult Sci.* 98:590-601.
- Muchadeyi FC, Dzomba EF. 2017. Genomics tools for the characterization of genetic adaptation of low input extensively raised chickens. In: Milad M, editor. *Poultry Science*. IntechOpen, DOI: 10.5772/65679.
- Mukiibi R, Vinsky M, Keogh K, Fitzsimmons C, Stothard P, Waters SM, Li C. 2019. Liver transcriptome profiling of beef steers with divergent growth rate, feed intake, or metabolic body weight phenotypes1. *J Anim Sci.* 97:4386-4404.
- Mwacharo JM, Bjornstad G, Han JL, Hanotte O. 2013. The History of African Village Chickens: an Archaeological and Molecular Perspective. *Afr Archaeol Rev.* 30:97-114.
- Nachury MV, Mick DU. 2019. Establishing and regulating the composition of cilia for signal transduction. *Nat Rev Mol Cell Biol.* 20:389-405.
- Nassar FS, Elsherif HR. 2018. Increasing heat tolerance in broiler by using thermal manipulation during embryonic development. *Appro Poult Dairy & Vet Sci.* 5(4). APDV.000616.2018. DOI: 10.31031/APDV.2018.05.000616.
- Okamoto K, Honda K, Doi K, Ishizu T, Katagiri D, Wada T, Tomita K, Ohtake T, Kaneko T, Kobayashi S, et al. 2015. Glypican-5 increases susceptibility to nephrotic damage in diabetic kidney. *Am J Pathol.* 185:1889-1898.
- Oksanen J. 2015. Multivariate analysis of ecological communities in R: vegan tutorial; <https://cran.r-project.org/web/packages/vegan/vegan.pdf>: Accessed on 24/11/2019.
- Ostman B, Hintze A, Adami C. 2012. Impact of epistasis and pleiotropy on evolutionary adaptation. *Proc Biol Sci.* 279:247-256.
- Pampouille E, Hennequet-Antier C, Praud C, Juanchich A, Brionne A, Godet E, Bordeau T, Fagnoul F, Le Bihan-Duval E, Berri C. 2019. Differential expression and co-expression gene



network analyses reveal molecular mechanisms and candidate biomarkers involved in breast muscle myopathies in chicken. *Sci Rep.* 9:14905.

Phillips SJ, Anderson RP, Schapire RE. 2006. Maximum entropy modeling of species geographic distributions. *Ecol Modell.* 190:231-259.

Pitt J, Gillingham PK, Maltby M, Stewart JR. 2016. New perspectives on the ecology of early domestic fowl: An interdisciplinary approach. *J Archaeol Sci.* 74:1-10.

Prendergast ME, Buckley M, Crowther A, Frantz L, Eager H, Lebrasseur O, Hutterer R, Hulme-Beaman A, Neer WV, Douka K, et al. 2017. Reconstructing Asian faunal introductions to eastern Africa from multi-proxy biomolecular and archaeological datasets. *PLoS One* 12(12):e0190336.

Price AL, Patterson NJ, Plenge RM, Weinblatt ME, Shadick NA, Reich D. 2006. Principal components analysis corrects for stratification in genome-wide association studies. *Nat Genet.* 38:904-909.

Prodromou NV, Thompson CL, Osborn DP, Cogger KF, Ashworth R, Knight MM, Beales PL, Chapple JP. 2012. Heat shock induces rapid resorption of primary cilia. *J Cell Sci.* 125:4297-4305.

Qanbari S, Rubin CJ, Maqbool K, Weigend S, Weigend A, Geibel J, Kerje S, Wurmser C, Peterson AT, Brisbi IL, et al. 2019. Genetics of adaptation in modern chicken. *PLoS Genet.* 15:<https://doi.org/10.1371/journal.pgen.1007989>.

QIAGEN Inc. Ingenuity Pathway Analysis;  
<https://www.qiagenbioinformatics.com/products/ingenuitypathway-analysis>.

Quinlan AR, Kindlon N. 2017. Bedtools: <https://bedtools.readthedocs.io/en/latest/index.html>;  
Accessed on 24/11/2019.

Rashamol V, Sejian V. 2018. Climate resilient livestock production: way forward. *J Dairy Vet Sci.* 5(5): 5556673. DOI: 10.19080/JDVS.2018.05.555673.

Reactome. R-GGA-140877: Formation of fibrin clot; <https://reactome.org/content/detail/R-GGA-140877>; Accessed on 10/02/2020.

Rees JS, Castellano S, Andres AM. 2020. The genomics of human local adaptation. *Trends Genet.* 36:415-428.

Rellstab C, Gugerli F, Eckert AJ, Hancock AM, Holderegger R. 2015. A practical guide to environmental association analysis in landscape genomics. *Mol Ecol.* 24:4348-4370.

Rojas-Downing MM, Nejadhashemi AP, Harrigan T, Woznicki SA. 2017. Climate change and livestock: Impacts, adaptation, and mitigation. *Clim Risk Manag.* 16:145-163.

Rojas-Morales P, Pedraza-Chaverri J, Tapia E. 2020. Ketone bodies, stress response, and redox homeostasis. *Redox Biol.* 29:101533.

Rubin CJ, Zody MC, Eriksson J, Meadows JR, Sherwood E, Webster MT, Jiang L, Ingman M, Sharpe T, Ka S, et al. 2010. Whole-genome resequencing reveals loci under selection during chicken domestication. *Nature* 464:587-591.

Sabeti PC, Varilly P, Fry B, Lohmueller J, Hostetter E, Cotsapas C, Xie XH, Byrne EH, McCarroll SA, Gaudet R, et al. 2007. Genome-wide detection and characterization of positive selection in human populations. *Nature* 449:913-U912.

Sarcev T, Secen N, Sabo A, Povazan D. 2008. [Influence of dexamethasone on appetite and body weight in lung cancer patients]. *Med Pregl.* 61:571-575.

- Sarkar S, Banerjee PK, Selvamurthy W. 2003. High altitude hypoxia: An intricate interplay of oxygen responsive macroevents and micromolecules. *Mol Cel Biochem.* 253:287-305.
- Shapiro BI, Gebru G, Desta S, Negassa A, Nigussie K, Abose3 G, Mechale H. 2017. Ethiopia livestock sector analysis. ILRI Project Report. Nairobi, Kenya: International Livestock Research Institute (ILRI).
- Swayne DE, Radin MJ. 1991. The Pathophysiological Effects of Water and Feed Restriction in Chickens. *Avian Pathol.* 20:649-661.
- Tadelle D, Kijora C, Peters KJ. 2003. Indigenous chicken ecotypes in Ethiopia: growth and feed utilization potentials. *Int J Poult Sci.* 2:144-152.
- The Library of Congress. 1991. The climate of Ethiopia; [http://www.geography-site.co.uk/pages/countries/climate/ethiopia\\_climate.html](http://www.geography-site.co.uk/pages/countries/climate/ethiopia_climate.html); Accessed on 22/11/2019.
- Truong L, Zheng YM, Song TY, Tang Y, Wang YX. 2018. Potential important roles and signaling mechanisms of YPEL4 in pulmonary diseases. *Clin Transl Med.* 7(1):16.
- Uniprot. <https://www.uniprot.org/>; accessed on 10/02/2020.
- Vajana E, Barbato M, Colli L, Milanesi M, Rochat E, Fabrizi E, Mukasa C, Del Corvo M, Masembe C, Muwanika VB, et al. 2018. Combining Landscape Genomics and Ecological Modelling to Investigate Local Adaptation of Indigenous Ugandan Cattle to East Coast Fever. *Front Genet.* 9:385.
- Walugembe M, Bertolini F, Dematawewa CMB, Reis MP, Elbeltagy AR, Schmidt CJ, Lamont SJ, Rothschild MF. 2019. Detection of Selection Signatures Among Brazilian, Sri Lankan, and Egyptian Chicken Populations Under Different Environmental Conditions. *Front Genet.* 9:737.
- Wang K, Li M, Hakonarson H. 2010. ANNOVAR: Functional annotation of genetic variants from next-generation sequencing data. *Nucleic Acids Res.* 38:e164.
- Weir BS, Cockerham CC. 1984. Estimating F-Statistics for the Analysis of Population-Structure. *Evol.* 38:1358-1370.
- Woldekiros HS, D'Andrea AC. 2017. Early evidence for domestic chickens (*Gallus gallus domesticus*) in the Horn of Africa. *Int. J. Osteoarchaeol.* 27 (3):329-341.
- Yang RC. 2014. Analysis of linear and non-linear genotype x environment interaction. *Front Genet.* 5:227.
- Yao C, Spurlock DM, Armentano LE, Page CD, VandeHaar MJ, Bickhart DM, Weigel KA. 2013. Random Forests approach for identifying additive and epistatic single nucleotide polymorphisms associated with residual feed intake in dairy cattle. *Int. J. Dairy Sci.* 96:6716-6729.
- Zhang H, Hu X, Wang Z, Zhang Y, Wang S, Wang N, Ma L, Leng L, Wang S, Wang Q, et al. 2012. Selection signature analysis implicates the PC1/PCSK1 region for chicken abdominal fat content. *PLoS One* 7:e40736.
- Zhang Q, Gou WY, Wang XT, Zhang YW, Ma J, Zhang HL, Zhang Y, Zhang H. 2016. Genome Resequencing Identifies Unique Adaptations of Tibetan Chickens to Hypoxia and High-Dose Ultraviolet Radiation in High-Altitude Environments. *Genome Biol Evol.* 8:765-776.
- Zhao J, Li XY, Guo MX, Yu JD, Yan CH. 2016. The common stress responsive transcription factor ATF3 binds genomic sites enriched with p300 and H3K27ac for transcriptional regulation. *BMC Genomics* 17:335.