



THE UNIVERSITY *of* EDINBURGH

## Edinburgh Research Explorer

# CT coronary angiography in patients with suspected angina due to coronary heart disease (SCOT-HEART): an open-label, parallel-group, multicentre trial

### Citation for published version:

SCOT-HEART investigators 2015, 'CT coronary angiography in patients with suspected angina due to coronary heart disease (SCOT-HEART): an open-label, parallel-group, multicentre trial', *The Lancet*, vol. 385, no. 9985, pp. 2383-2391. [https://doi.org/10.1016/S0140-6736\(15\)60291-4](https://doi.org/10.1016/S0140-6736(15)60291-4)

### Digital Object Identifier (DOI):

[10.1016/S0140-6736\(15\)60291-4](https://doi.org/10.1016/S0140-6736(15)60291-4)

### Link:

[Link to publication record in Edinburgh Research Explorer](#)

### Document Version:

Publisher's PDF, also known as Version of record

### Published In:

The Lancet

### General rights

Copyright for the publications made accessible via the Edinburgh Research Explorer is retained by the author(s) and / or other copyright owners and it is a condition of accessing these publications that users recognise and abide by the legal requirements associated with these rights.

### Take down policy

The University of Edinburgh has made every reasonable effort to ensure that Edinburgh Research Explorer content complies with UK legislation. If you believe that the public display of this file breaches copyright please contact [openaccess@ed.ac.uk](mailto:openaccess@ed.ac.uk) providing details, and we will remove access to the work immediately and investigate your claim.



# CT coronary angiography in patients with suspected angina due to coronary heart disease (SCOT-HEART): an open-label, parallel-group, multicentre trial



The SCOT-HEART investigators\*



## Summary

**Background** The benefit of CT coronary angiography (CTCA) in patients presenting with stable chest pain has not been systematically studied. We aimed to assess the effect of CTCA on the diagnosis, management, and outcome of patients referred to the cardiology clinic with suspected angina due to coronary heart disease.

**Methods** In this prospective open-label, parallel-group, multicentre trial, we recruited patients aged 18–75 years referred for the assessment of suspected angina due to coronary heart disease from 12 cardiology chest pain clinics across Scotland. We randomly assigned (1:1) participants to standard care plus CTCA or standard care alone. Randomisation was done with a web-based service to ensure allocation concealment. The primary endpoint was certainty of the diagnosis of angina secondary to coronary heart disease at 6 weeks. All analyses were intention to treat, and patients were analysed in the group they were allocated to, irrespective of compliance with scanning. This study is registered with ClinicalTrials.gov, number NCT01149590.

**Findings** Between Nov 18, 2010, and Sept 24, 2014, we randomly assigned 4146 (42%) of 9849 patients who had been referred for assessment of suspected angina due to coronary heart disease. 47% of participants had a baseline clinic diagnosis of coronary heart disease and 36% had angina due to coronary heart disease. At 6 weeks, CTCA reclassified the diagnosis of coronary heart disease in 558 (27%) patients and the diagnosis of angina due to coronary heart disease in 481 (23%) patients (standard care 22 [1%] and 23 [1%];  $p < 0.0001$ ). Although both the certainty (relative risk [RR] 2.56, 95% CI 2.33–2.79;  $p < 0.0001$ ) and frequency of coronary heart disease increased (1.09, 1.02–1.17;  $p = 0.0172$ ), the certainty increased (1.79, 1.62–1.96;  $p < 0.0001$ ) and frequency seemed to decrease (0.93, 0.85–1.02;  $p = 0.1289$ ) for the diagnosis of angina due to coronary heart disease. This changed planned investigations (15% vs 1%;  $p < 0.0001$ ) and treatments (23% vs 5%;  $p < 0.0001$ ) but did not affect 6-week symptom severity or subsequent admittances to hospital for chest pain. After 1.7 years, CTCA was associated with a 38% reduction in fatal and non-fatal myocardial infarction (26 vs 42, HR 0.62, 95% CI 0.38–1.01;  $p = 0.0527$ ), but this was not significant.

**Interpretation** In patients with suspected angina due to coronary heart disease, CTCA clarifies the diagnosis, enables targeting of interventions, and might reduce the future risk of myocardial infarction.

**Funding** The Chief Scientist Office of the Scottish Government Health and Social Care Directorates funded the trial with supplementary awards from Edinburgh and Lothian's Health Foundation Trust and the Heart Diseases Research Fund.

**Copyright** © Newby et al. Open Access article distributed under the terms of CC BY.

## Introduction

Many patients with recent onset angina have a cardiac event within 1–2 years<sup>1</sup> and will benefit from intervention.<sup>2</sup> Although the rapid clinical assessment of patients with suspected angina due to coronary heart disease is successful at identifying high-risk individuals,<sup>3,4</sup> many patients are still misdiagnosed. Patients diagnosed with non-cardiac chest pain account for a third of patients who subsequently die from cardiovascular disease or have an acute coronary syndrome during 5 years of follow-up.<sup>4</sup> Improved diagnostic accuracy and risk stratification is needed, especially in younger patients.<sup>5</sup>

CT coronary angiography (CTCA) has a sensitivity of 89% and specificity of 96% for the detection of coronary heart disease.<sup>6</sup> However, concerns have been raised about

its generalisability in patients with cardiac disease, with the potential for poor image quality in those with obesity, coronary calcification, or arrhythmia, and the high levels of radiation exposure (about 15 mSv).<sup>6,7</sup> However, the evolution of scanning technology has led to improved spatial and temporal resolution with lower radiation doses that should translate into a more effective and safer imaging strategy.

Most clinical trials have focused on assessing the accuracy and comparability of CTCA for the identification of coronary heart disease.<sup>8–10</sup> In one study,<sup>11</sup> investigators assessed the effect of CTCA on the management of low-risk patients presenting to the emergency department with acute chest pain. Data from the study suggested improved decision making but an increase in further downstream testing and health-care costs without any

Published Online  
March 15, 2015  
[http://dx.doi.org/10.1016/S0140-6736\(15\)60291-4](http://dx.doi.org/10.1016/S0140-6736(15)60291-4)

This online publication has been corrected. The corrected version first appeared at [thelancet.com](http://thelancet.com) on Month DD, 2015

See Online/Comment  
[http://dx.doi.org/10.1016/S0140-6736\(15\)60463-9](http://dx.doi.org/10.1016/S0140-6736(15)60463-9)

\*Members listed at end of report

Correspondence to:  
Prof David Newby, British Heart Foundation/University of Edinburgh, Centre for Cardiovascular Science, Chancellor's Building, Edinburgh EH16 4SA, Scotland  
[d.e.newby@ed.ac.uk](mailto:d.e.newby@ed.ac.uk)

### Research in context

#### Evidence before this study

Between 2007 and 2010, we searched PubMed for reports published in English with the search terms “computed tomography”, “coronary angiography”, “angina pectoris”, and “coronary heart disease”. We identified a high-quality health technology assessment comprehensive systematic review that assessed the role of 64-multidetector CT coronary angiography (CTCA). In keeping with previous analyses from the European Society of Cardiology, the review confirmed the diagnostic utility of CTCA in the identification of coronary heart disease. However, this systemic review highlighted several areas that need further research and in particular highlighted the need to assess the usefulness of multidetector CTCA in patients with suspected coronary heart disease. Shortly afterwards, the National Institute for Health and Care Excellence (NICE) outlined recommendations for the assessment and investigation of recent onset chest pain or discomfort of suspected cardiac origin. These guidelines specifically called for research into the clinical and cost-effectiveness of CTCA in the diagnosis of angina pectoris due to coronary heart disease.

One study has assessed the effect of CTCA on the management of low-risk patients presenting to the emergency department

with acute chest pain. The data suggested improved decision making but an increase in further downstream testing and health-care costs without any effect on cardiovascular outcomes. By contrast, the benefit of implementing CTCA for patients presenting to the cardiology clinic with stable chest pain has not been systematically assessed.

#### Added value of this study

We provide new information about the effect of CTCA on the diagnosis, management, and outcome of patients referred to the cardiology clinic with suspected angina due to coronary heart disease.

#### Implications of all the available evidence

The addition of CTCA to standard clinical care markedly clarifies the diagnosis of angina due to coronary heart disease. This method reduces the need for further stress testing, increases the use of invasive coronary angiography, and results in more focused treatment regimes that are associated with an apparent reduction in fatal and non-fatal myocardial infarction. Further longer term follow-up and health economic assessment are needed to establish the clinical and cost-effectiveness of CTCA before adoption into routine clinical practice.

effect on cardiovascular outcomes.<sup>11</sup> By contrast, the benefit of implementation of CTCA for patients presenting to the cardiology clinic with stable chest pain has not been systematically assessed.<sup>7,12</sup> We aimed to investigate the effect of CTCA on the diagnosis, management, and outcome of patients referred to the cardiology clinic with suspected angina due to coronary heart disease.

## Methods

### Study design

In this open-label, parallel-group, randomised controlled trial, we recruited patients from 12 cardiology chest pain clinics across Scotland. The study design is described in detail elsewhere.<sup>13</sup> The study was done with the approval of the research ethics committee.

### Participants

Patients aged 18–75 years and referred by a primary-care physician to a dedicated cardiology chest pain clinic with stable suspected angina due to coronary heart disease were eligible for inclusion. Patients with acute chest pain are not seen in such clinics but are referred directly to the emergency department. Exclusion criteria were inability to undergo CT scanning, renal failure (serum creatinine >250 µmol/L or estimated glomerular filtration rate <30 mL/min), previous recruitment to the trial, major allergy to iodinated contrast media, inability to give informed consent, known pregnancy, and acute coronary syndrome within 3 months.

All patients underwent routine clinic assessment including, if deemed appropriate, symptom-limited exercise electrocardiography with the standard Bruce protocol. Symptoms (typical, atypical, or non-anginal chest pain according to the National Institute for Health and Care Excellence [NICE] definition<sup>12</sup>), diagnosis, investigations, and treatment strategy were documented at the end of the clinic attendance, before randomisation. This included categorising (no, unlikely, probable, or yes) the likelihood of the diagnosis of coronary heart disease and angina due to coronary heart disease and documentation of the need for additional stress imaging, such as stress echocardiography, and radionuclide or magnetic resonance myocardial perfusion imaging, and invasive coronary angiography. Patients gave written informed consent.

### Randomisation and masking

After recruitment, patients were randomly assigned (1:1) to standard care plus coronary calcium score and CTCA, or to standard care alone, by use of a web-based randomisation service to ensure allocation concealment. Randomisation used minimisation to ensure balance for age, sex, BMI, diabetes, history of coronary heart disease, atrial fibrillation, and baseline diagnosis of angina due to coronary heart disease.

### Procedures

Cardiovascular risk was calculated with the ASSIGN score, a validated Scottish cardiovascular risk score that also incorporates social deprivation and family history of

For the ASSIGN score see <http://assign-score.com/>

cardiovascular disease.<sup>14</sup> CT scans were done with 64 detector row scanner (Brilliance 64, Philips Medical Systems, Netherlands, and Biograph mCT, Siemens, Germany) and 320 detector row scanner (Aquilion ONE, Toshiba Medical Systems, Japan) at three imaging sites. All CT coronary angiograms were assessed by at least two accredited assessors (a cardiologist and a radiologist) and the first 40 scans from each imaging site underwent independent central validation to ensure consistency of approach. Obstructive coronary artery disease was defined as a luminal stenosis more than 70% in one or more major epicardial vessel or more than 50% in the left main stem.<sup>12</sup> Luminal cross-sectional area stenoses were classified as normal (<10%), mild non-obstructive (10–49%), moderate non-obstructive (50–70%), or obstructive (>70%). Assessors reported the presence of coronary heart disease with excellent intra-observer agreement of 95% and inter-observer agreement of 91%.

**Outcomes**

The primary endpoint of the study was the proportion of patients diagnosed with angina pectoris secondary to coronary heart disease at 6 weeks. Long-term outcomes were death, myocardial infarction, coronary revascularisation procedures, admittance to hospital for chest pain episodes, cerebrovascular disease, and peripheral vascular disease, and were identified with data from the Information and Statistics Division of the National Health Service (NHS) Scotland and, when appropriate, confirmed by review of patient health records. Categorisation for analysis was done masked to randomised allocation.

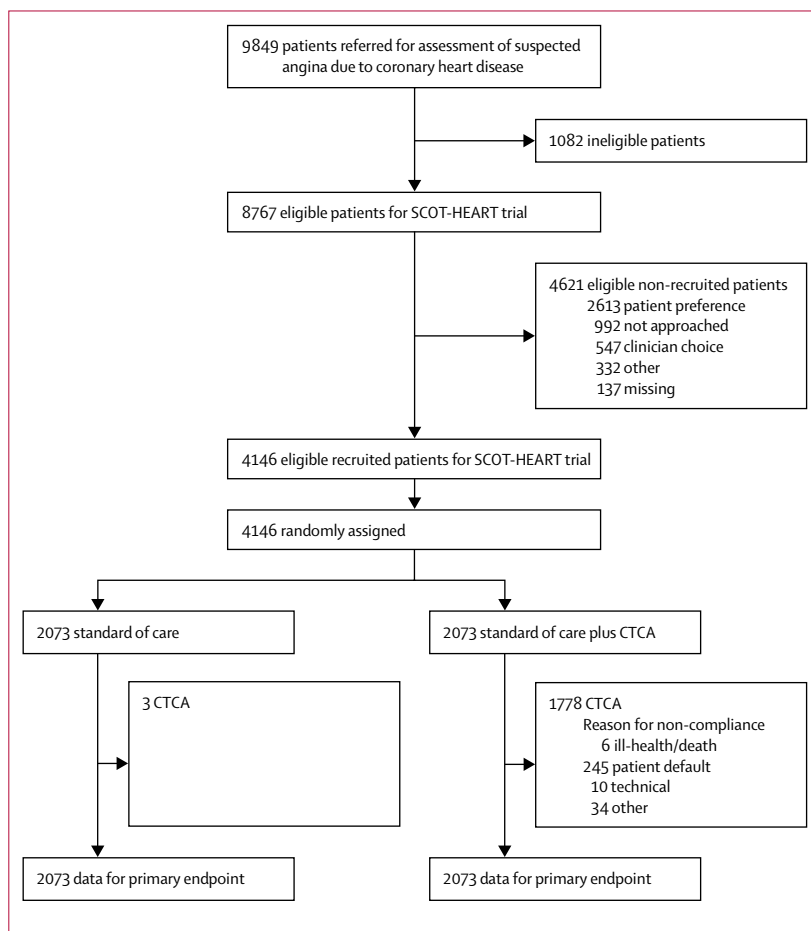
At 6 weeks, the attendant clinician was asked to review their patients' diagnosis and management plan in view of all available information including the CTCA report (standard care plus CTCA) or the ASSIGN score (standard care alone). The attending clinician documented all alterations in the diagnosis, investigations (eg, further stress testing or invasive coronary angiography), or treatments (eg, preventive and antianginal treatments). Like at baseline, patients' anginal symptoms were assessed by a self-administered Seattle Angina Questionnaire,<sup>15</sup> with telephone follow-up for non-responders after two mailings two weeks apart.

For safety outcomes, radiation doses were recorded as the dose-length product and the effective radiation dose calculated (0.014 mSv/mGy·cm conversion factor). We noted adverse reactions to the scanning procedure—eg, contrast reaction, renal impairment or vasovagal response. We recorded the presence of incidental findings and whether they could provide an alternative diagnosis for the presenting chest pain.

**Statistical analysis**

For 80% power at a two-sided p value of 0.05, we aimed to recruit 2069 patients per group to detect an absolute change of 4% in the diagnosis of angina.

The diagnoses of coronary heart disease, and angina due to coronary heart disease (primary endpoint) were assessed for certainty (yes/no vs unlikely/probable in the primary analysis) and frequency (yes/probable vs



**Figure 1: Trial Profile**  
CTCA=CT coronary angiography.

	All participants (n=4146)	Standard care and CTCA (n=2073)	Standard care (n=2073)
Men	2325 (56%)	1162 (56%)	1163 (56%)
Age (years)	57.1±9.7	57.1±9.7	57.0±9.7
BMI (kg/m <sup>2</sup> )	29.7±5.9	29.7±5.8	29.8±6.0
Atrial fibrillation	84 (2%)	42 (2%)	42 (2%)
Previous CHD	372 (9%)	186 (9%)	186 (9%)
Previous CVD	139 (3%)	91 (4%)	48 (2%)
Previous PVD	53 (1%)	36 (2%)	17 (1%)
Smoking habit*	2185 (53%)	1095 (53%)	1090 (53%)
Hypertension	1395 (34%)	712 (34%)	683 (33%)
Diabetes	444 (11%)	223 (11%)	221 (11%)
Hypercholesterolaemia	2176 (53%)	1099 (53%)	1077 (52%)
Family history	1716 (41%)	887 (43%)	829 (40%)

(Table 1 continues on next page)

	All participants (n=4146)	Standard care and CTCA (n=2073)	Standard care (n=2073)
(Continued from previous page)			
Serum cholesterol (mmol/L)			
Total	5.41±1.20	5.41±1.23	5.41±1.17
HDL	1.35±0.43	1.35±0.42	1.35±0.43
Antiplatelet agent	1993 (48%)	1009 (49%)	984 (48%)
Statin	1786 (43%)	902 (44%)	884 (43%)
β-blockade	1357 (33%)	685 (33%)	672 (32%)
ACE inhibitor or ARB	685 (17%)	341 (16%)	344 (17%)
Calcium channel blocker	377 (9%)	183 (9%)	194 (9%)
Nitrates	1160 (28%)	570 (28%)	590 (29%)
Other antianginal treatment	191 (5%)	95 (5%)	96 (5%)
Anginal symptoms†			
Typical	1462 (35%)	737 (36%)	725 (35%)
Atypical	988 (24%)	502 (24%)	486 (23%)
Non-anginal	1692 (41%)	833 (40%)	859 (41%)
Seattle Angina Questionnaire			
Physical limitation	74±22	73±22	74±22
Angina stability	44±28	44±28	44±28
Angina frequency	68±22	68±22	68±22
Treatment satisfaction	92±12	92±12	92±13
Quality of life	55±21	55±21	55±22
Electrocardiogram			
Normal	3492 (84%)	1757 (85%)	1735 (84%)
Abnormal	608 (15%)	292 (14%)	316 (15%)
Stress electrocardiograph			
Performed	3517 (85%)	1764 (85%)	1753 (85%)
Normal	2188 (62%)	1103 (63%)	1085 (62%)
Inconclusive	566 (16%)	284 (16%)	282 (16%)
Abnormal‡	529 (15%)	264 (15%)	265 (15%)
Further investigation	1315 (32%)	633 (31%)	682 (33%)
Stress imaging			
Radionuclide	389 (9%)	176 (9%)	213 (10%)
Other	30 (1%)	16 (1%)	14 (1%)
Invasive coronary angiography	515 (12%)	255 (12%)	260 (13%)
Baseline diagnosis			
CHD	1938 (47%)	982 (47%)	956 (46%)
Angina due to CHD	1485 (36%)	742 (36%)	743 (36%)
Predicted 10-year CHD risk§	17±12%	18±11%	17±12%

Data are n (%) or mean ± SD. CTCA=CT coronary angiography. CHD=coronary heart disease. CVD=cerebrovascular disease. PVD=peripheral vascular disease. HDL=high density lipoprotein. ACE=angiotensin-converting enzyme. ARB=angiotensin receptor blocker. \*Current and ex-smokers. †National Institute for health and Care Excellence criteria. ‡Evidence of myocardial ischaemia. §ASSIGN score.

**Table 1: Baseline participant characteristics and clinic assessment**

See Online for appendix unlikely/no). These categories were analysed with logistic regression and adjusted for centre and minimisation variables excluding the baseline diagnosis. Odds ratios were converted into relative risks for presentation.<sup>16</sup> Secondary binary outcomes were analysed in a similar way. All analyses were intention to treat, and patients were analysed in the group they were allocated to, irrespective of compliance with scanning. Missing data were removed from analyses, except for survival

endpoints when they were censored at the time that they were lost from the study. Clinical outcomes from routine data were analysed with Cox regression, adjusted as before, and Kaplan-Meier plots were constructed. Data are presented as mean±standard deviation, median (IQR), and relative risk or hazard ratio (95% CI) as appropriate. Statistical significance was taken as a two-sided p value of less than 0.05.

### Role of the funding source

The funder had no role in the trial conduct including data collection, analysis, interpretation, writing of the manuscript, and the decision to submit. The data were analysed by Edinburgh Clinical Trials Unit. The Trial Steering Committee and the Chief Investigator were responsible for the decision to submit the manuscript. Toshiba, Siemens, and Philips had no role in the trial conduct.

### Results

Between Nov 18, 2010, and Sept 24, 2014, we randomly assigned 4146 (42%) of 9849 patients who had been referred for assessment of suspected angina due to coronary heart disease at 12 cardiology centres across Scotland (figure 1). Table 1 shows baseline characteristics. Few participants had a history of cardiovascular disease, but there was a high prevalence of cardiovascular risk factors and preventive treatments associated with a high 10-year risk of coronary heart disease events. At the initial clinic assessment, most participants had anginal chest pain with limiting symptoms and most underwent exercise electrocardiography stress testing (table 1). At baseline, the attending clinician established that half the participants had coronary heart disease and a third had angina due to coronary heart disease.

After clinic consultation, 2073 participants were randomly assigned to CTCA, of whom 295 defaulted or did not complete the scan (appendix). Participants who defaulted were less likely to have typical anginal chest pain (58 [23%] vs 686 [39%];  $p<0.0001$ ) or have a diagnosis of angina due to coronary heart disease (50 [20%] vs 692 [38%];  $p<0.0001$ ).

Of those 1778 participants who underwent CTCA, 31 (2%) had an adverse event related to the CTCA (13 contrast reactions, seven contrast extravasations, four vasovagal reactions, four headaches, and three other reactions). All adverse events were mild and self-limiting with no cases of anaphylaxis or renal failure. The median radiation dose was 4.1 (IQR 3.0–5.6) mSv, (dose-length product 291 [216–397] mGy·cm); more than a third (37%) of the dose was attributable to the measurement of the coronary artery calcium score. CTCAs were mainly done with the 320 detector row scanner ( $n=1343$ ) and overall diagnostic quality was achieved in 95%. Most participants (63%) had evidence of coronary heart disease with a quarter having obstructive disease (table 2). In the opinion of the clinicians reporting the CTCA, this finding markedly

	N (%)
Coronary calcium score	1159 (65%)
Low (<100 AU)	303 (17%)
Medium (100–400 AU)	315 (18%)
High (>400AU)	
CTCA	
Normal	654 (37%)
Non-obstructive CHD	672 (38%)
Mild (<50%)	372 (21%)
Moderate (50–70%)	300 (17%)
Obstructive CHD	452 (25%)
One vessel	207 (12%)
Two vessels	128 (7%)
Three vessels	117 (7%)
Other cardiac findings	501 (28%)
Aortic valve calcification	146 (8%)
Mitral valve calcification	29 (2%)
Dilated left ventricle	38 (2%)
Dilated right ventricle	12 (1%)
Dilated left atrium	80 (5%)
Dilated right atrium	11 (1%)
Left ventricular wall thinning	33 (2%)
Left ventricular hypertrophy	70 (4%)
Hypertrophic obstructive cardiomyopathy	4 (0.2%)
Other	232 (13%)
Non-cardiac findings	677 (38%)
Parenchymal lung disease	281 (16%)
Pulmonary mass or nodule	188 (11%)
Emphysema	154 (9%)
Hiatus hernia	135 (8%)
Liver pathology	40 (2%)
Lymphadenopathy	13 (1%)
Pulmonary embolism	5 (0.3%)

Data are n (%). AU=Agatston Units. CTCA=CT coronary angiography. CHD=coronary heart disease.

**Table 2: Findings of CTCA (n=1778)**

increased the certainty (relative risk [RR] 3.76, 95% CI 3.61–3.89;  $p<0.0001$ ) but reduced the frequency (0.78, 0.70–0.86;  $p<0.0001$ ), of the diagnosis of angina due to coronary heart disease. We noted several incidental findings that were clinically important or identified non-coronary causes of chest pain (table 2).

The attending clinician reported that, compared with standard care, CTCA increased the certainty (RR 2.56, 95% CI 2.33–2.79;  $p<0.0001$ ) and frequency (1.09, 1.02–1.17;  $p=0.0172$ ) of the diagnosis of coronary heart disease at 6 weeks (table 3). For the primary endpoint, this translated into an increased certainty (1.79, 1.62–1.96;  $p<0.0001$ ) but no effect on frequency (0.93, 0.85–1.02;  $p=0.1289$ ) of the diagnosis of angina due to coronary heart disease. Overall, the 6-week diagnosis of coronary heart disease changed in 27% of participants assigned CTCA compared with 1% assigned to standard care and the

	6-week diagnosis				
	Yes	Probable	Unlikely	No	Total
<b>Diagnosis of coronary heart disease</b>					
Standard care and CTCA					
Baseline diagnosis					
Yes	197 (10%)*	2 (0%)	4 (0%)	7 (0%)	210 (10%)
Probable	148 (7%)	490 (24%)*	26 (1%)	107 (5%)	771 (37%)
Unlikely	124 (6%)	48 (2%)	698 (34%)*	80 (4%)	950 (46%)
No	7 (0%)	4 (0%)	1 (0%)	126 (6%)*	138 (7%)
Total	476 (23%)	544 (26%)	729 (35%)	320 (15%)	2069 (100%)
Standard care					
Baseline diagnosis					
Yes	220 (11%)*	1 (0%)	0 (0%)	1 (0%)	222 (11%)
Probable	0 (0%)	721 (35%)*	6 (0%)	7 (0%)	734 (35%)
Unlikely	1 (0%)	6 (0%)	975 (47%)*	0 (0%)	982 (47%)
No	0 (0%)	0 (0%)	0 (0%)	132 (6%)*	132 (6%)
Total	221 (11%)	728 (35%)	981 (47%)	140 (7%)	2070 (100%)
<b>Diagnosis of angina due to coronary heart disease</b>					
Standard care and CTCA					
Baseline diagnosis					
Yes	126 (6%)*	0 (0%)	6 (0%)	8 (0%)	140 (7%)
Probable	69 (3%)	402 (19%)*	52 (3%)	77 (4%)	600 (29%)
Unlikely	33 (2%)	55 (3%)	822 (40%)*	151 (7%)	1061 (51%)
No	3 (0%)	8 (0%)	19 (1%)	237 (11%)*	267 (13%)
Total	231 (11%)	465 (22%)	899 (43%)	473 (23%)	2068 (100%)
Standard care					
Baseline diagnosis					
Yes	139 (7%)*	1 (0%)	1 (0%)	0 (0%)	141 (7%)
Probable	2 (0%)	588 (28%)*	5 (0%)	7 (0%)	602 (29%)
Unlikely	2 (0%)	4 (0%)	1055 (51%)*	0 (0%)	1061 (51%)
No	0 (0%)	0 (0%)	1 (0%)	265 (13%)*	266 (13%)
Total	143 (7%)	593 (29%)	1062 (51%)	272 (13%)	2070 (100%)

Data are n (%). Clinicians were asked to diagnose both coronary heart disease, and angina due to coronary heart disease, in view of all available information. They were asked to categorise this according to the level of confidence in their diagnosis (yes, probable, unlikely, or no) both at baseline and at 6 weeks after the result of the CTCA (standard care and CTCA) and ASSIGN score (standard care). Certainty of the diagnosis was assessed by comparing yes/no with probable/unlikely. Frequency of the diagnosis was compared between yes/probable and unlikely/no. CTCA=CT coronary angiography. \*Complete agreement at baseline and 6 weeks.

**Table 3: Baseline and 6-week diagnoses of coronary heart disease and angina due to coronary heart disease**

6-week diagnosis of angina due to coronary heart disease in 23% of participants assigned CTCA compared with 1% assigned to standard care ( $p<0.001$  for both).

Changes in the diagnosis were associated with changes in planned investigations (15% vs 1% respectively;  $p<0.0001$ ; table 4). Specifically, the use of CTCA was associated with the cancellation of 121 functional stress tests and 29 invasive coronary angiograms. Conversely, CTCA was associated with 94 further invasive coronary angiograms (table 4). These changes were mainly the result of the exclusion or identification of obstructive coronary heart disease (appendix).

The changes in diagnoses and investigations were associated with changes in the subsequent recommendations for preventive (18% vs 4% respectively;

p<0.0001) and antianginal (9% vs 1% respectively; p<0.0001) treatments (table 4). Although the use of antianginal treatment was reduced, CTCA was not associated with an increase in the proportion of coronary revascularisation (11.2 vs 9.7%; p=0.0611; table 5, figure 2, and appendix).

Results of the Seattle Angina Questionnaire showed that treatment satisfaction was excellent at the baseline clinic attendance (92/100). Compared with baseline, angina stability and frequency markedly improved at 6 weeks in patients undergoing CTCA (n=640, 44±28 to 62±24 at baseline; p<0.001; and n=655, 68±22 to 79±23; p<0.0001, respectively) and in those assigned standard care (n=651, 44±28 to 61±24; p<0.0001 at baseline; and n=653, 68±22 to 80±23; p<0.0001, respectively). We noted no differences in the improvements in angina stability and frequency between the randomised groups (between group difference, 1.02±0.84 [p=0.2234] and -0.87±0.70 [p=0.2147]). Furthermore, we recorded no differences in subsequent numbers of admittance to hospital for chest pain (table 5 and appendix).

Patients were followed up for a median of 1.7 (range 0.1–4.1) years. CTCA was associated with 38% reduction in coronary heart disease death and non-fatal myocardial infarction (figure 2) although, for the prespecified analysis, this fell just short of statistical significance (adjusted HR 0.62, 95% CI 0.38–1.01; p=0.0527).

**Discussion**

In this large multicentre randomised clinical trial, the addition of CTCA to standard clinical care clarified the diagnosis of angina due to coronary heart disease. This reduced the need for further stress testing, increased the use of invasive coronary angiography, and changed treatment regimes that might be associated with a reduction in fatal and non-fatal myocardial infarction.

This trial has five major strengths. First, we included a broad and large population of patients who were representative of those referred to the cardiology clinic for assessment of suspected angina due to coronary heart disease. Second, we specifically included patients who had been excluded from previous studies of CTCA such as those with obesity, high calcium scores, and atrial fibrillation. Despite their inclusion, we obtained diagnostic information in 99% of patients. Third, we allowed unrestricted use of further stress imaging in keeping with clinician choice and routine practice because we wanted to explore the effect of the addition of CTCA as opposed to doing a head-to-head comparison with other diagnostic approaches. Fourth, we focused on the effect of CTCA on patient-centred and clinician-centred outcomes rather than comparing diagnostic accuracy between imaging modalities or anatomic versus functional testing. Finally, we assessed the effect of this intervention on both short-term and long-term outcomes to define the impact of this additional imaging intervention to routine clinical practice.

	Standard care and CTCA		Standard care	
	Cancellation	New	Cancellation	New
<b>Investigations</b>				
Stress imaging	121	5	0	6
Invasive coronary angiography	29	94	1	8
Total	150	99	1	14
<b>Medical treatments</b>				
Preventive treatment	77	293	8	84
Antianginal treatment	112	82	6	11
Total	189	375	14	95

CTCA=CT coronary angiography.

**Table 4: Changes in investigations and treatments at 6 weeks**

	All participants (n=4146)	Standard care and CTCA (n=2073)	Standard care (n=2073)	HR (95% Wald confidence limits)	p value*
CHD death† and myocardial infarction	68 (1.6%)	26 (1.3%)	42 (2.0%)	0.616 (0.378–1.006)	0.0527
CHD death†, myocardial infarction, and stroke	79 (1.9%)	31 (1.5%)	48 (2.3%)	0.644 (0.410–1.012)	0.0561
Non-fatal myocardial infarction	57 (1.4%)	22 (1.1%)	35 (1.7%)	0.627 (0.367–1.069)	0.0862
Non-fatal stroke	12 (0.3%)	5 (0.1%)	7 (0.2%)	0.727 (0.228–2.315)	0.5900
All-cause death	37 (0.9%)	17 (0.8%)	20 (1.0%)	0.860 (0.450–1.642)	0.6468
Cardiovascular death†	11 (0.3%)	4 (0.2%)	7 (0.3%)	0.574 (0.167–1.971)	0.3776
Non-cardiovascular death	26 (0.6%)	13 (0.6%)	13 (0.6%)	1.006 (0.466–2.172)	0.9879
Coronary revascularisation‡	434 (10.7%)	233 (11.2%)	201 (9.7%)	1.198 (0.992–1.448)	0.0611
Percutaneous coronary intervention	344 (8.3%)	184 (8.9%)	160 (7.7%)	1.190 (0.963–1.472)	0.1075
Coronary artery bypass graft surgery	99 (2.4%)	54 (2.6%)	45 (2.2%)	1.218 (0.819–1.812)	0.3304
Hospitalisation for chest pain§	511 (12.3%)	247 (11.9%)	264 (12.7%)	0.928 (0.780–1.104)	0.3993
Cardiac chest pain	145 (3.5%)	76 (3.7%)	69 (3.3%)	1.115 (0.805–1.545)	0.5130
Non-cardiac chest pain	391 (9.4%)	183 (8.8%)	208 (10.0%)	0.864 (0.708–1.054)	0.1498

CTCA=CT coronary angiography. HR=hazard ratio. CHD=coronary heart disease.\*Cox regression. †Cause of death was certified as myocardial infarction in all cases. ‡Nine patients had percutaneous coronary intervention followed by coronary artery bypass surgery. §Some patients had admissions for both cardiac and non-cardiac chest pain.

**Table 5: Clinical outcomes**

In our study, 36% of patients were diagnosed with angina due to coronary heart disease in the clinic. We noted that although the certainty and frequency of the diagnosis of coronary heart disease increased, the overall diagnostic rate of angina due to coronary heart disease did not change or seemed to fall with the introduction of CTCA. This finding suggests clinicians tend to overdiagnose angina due to coronary heart disease, probably for fear of undertreatment. However, CTCA did diagnose many patients with angina due to coronary heart disease who had been misclassified in the clinic. Overall reclassification happened in one in four patients and this is clearly important for the subsequent investigation and treatment of these patients.

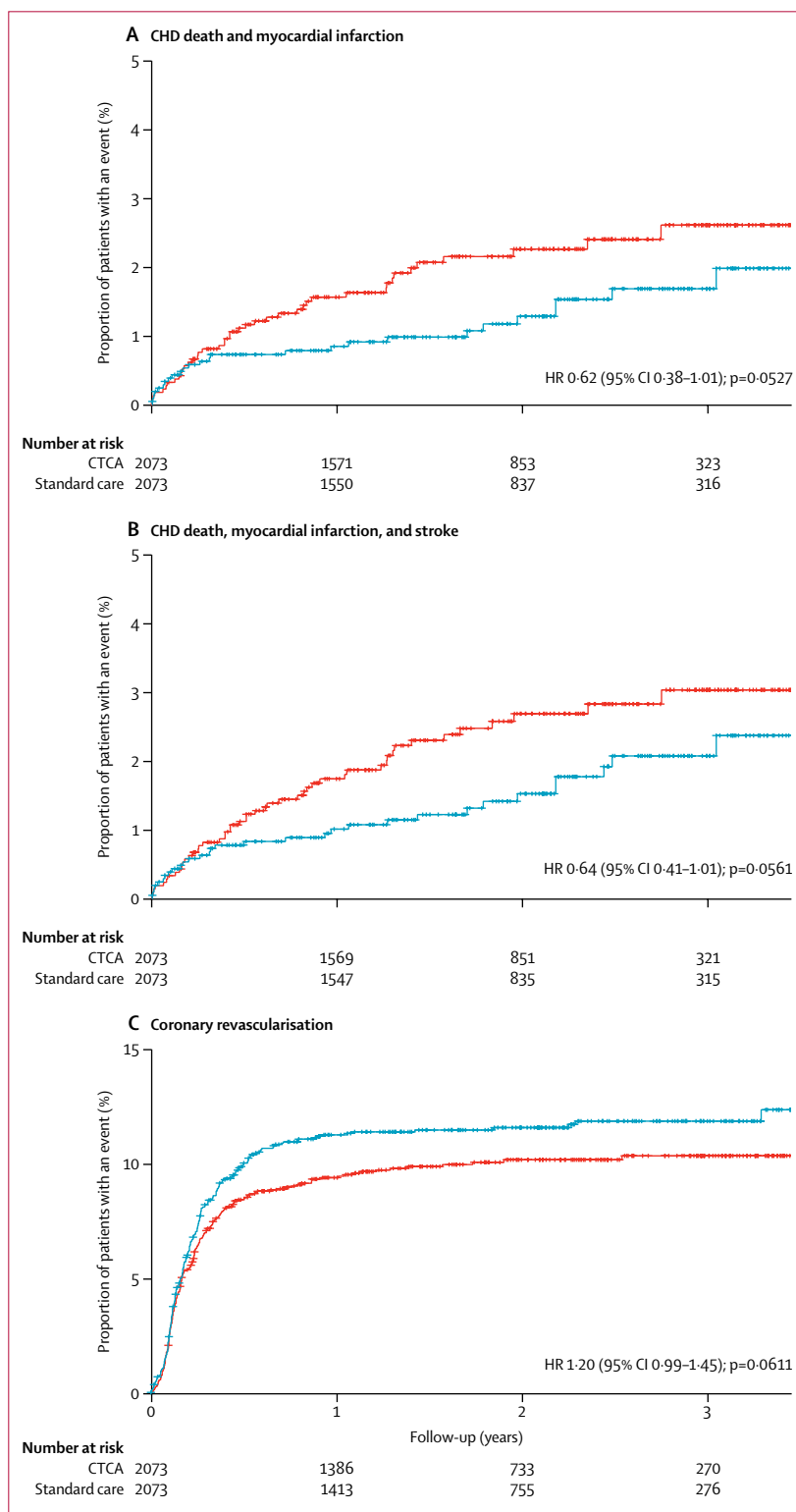
In view of its strong negative predictive value, the cancellation of invasive coronary angiography with the use of CTCA would be anticipated. However, CTCA caused a modest net increase in use of invasive coronary angiography. These extra invasive coronary angiograms showed obstructive coronary heart disease in most patients, including those with severe triple vessel disease. Indeed CTCA was associated with an apparent increase in coronary revascularisation, although this fell just short of statistical significance.

CTCA undoubtedly increased the identification of both obstructive and non-obstructive coronary atherosclerosis. This finding led to changes in preventive treatments despite a high prevalence of such treatments at baseline. In keeping with the changes in diagnoses, overall preventive treatment was increased and antianginal treatment was decreased. One in four patients had changes to their treatment.

Treatment satisfaction at the clinic was high and symptoms improved markedly by 6 weeks, but we recorded no short-term differences in the frequency and severity of symptoms between the allocated groups. In view of the marked improvement in symptoms with standard care and the reduction of antianginal treatment with CTCA, it is perhaps not surprising that there was no effect on 6-week symptom severity. It will be interesting to see whether differences can be seen with longer follow-up at 6 months when the potential effect of coronary revascularisation will have had chance to take effect. However, CTCA did not seem to prevent subsequent admittance of patients to hospital with chest pain, suggesting admission with chest pain is not dependent on whether there is uncertainty regarding the presence of coronary heart disease.

We had anticipated that a significant early change in overall clinical outcome would be unlikely because most patients had normal coronary arteries or mild coronary

heart disease. Indeed, the overall absolute event rate during a median of 1.7 years of follow-up was low at 2%. However, we recorded a 38% reduction in myocardial



**Figure 2: Kaplan-Meier curves for CHD death and myocardial infarction (A), CHD death, myocardial infarction, and stroke (B), and coronary revascularisation (C) in patients assigned to CTCA (blue) and standard care (red)**

Each cross-hair shows when a participant is censored from further follow-up.

The number at risk for each yearly interval is given for each randomised allocation group. CHD=coronary heart disease. CTCA=CT coronary angiography.



infarction in those randomly assigned to CTCA. We acknowledge that the absolute number of events was modest, the finding was borderline significant, and further long-term follow-up is needed. However, we believe that this finding is in keeping with the improvements in the management and treatment consequent on the clearer diagnosis of coronary heart disease, especially because patients with recent onset angina have an increased risk of early events.<sup>14</sup> Indeed, we recorded a higher event rate in the first few months following clinic consultation (figure 2). Although coronary revascularisation is not associated with improved outcomes in patients with chronic stable coronary heart disease,<sup>17</sup> it is associated with improved outcomes in those with acute coronary syndromes.<sup>18</sup> Therefore, we suggest that patients with recent onset angina due to coronary heart disease are an intermediate risk group, and that this plausibly accounts for the trend towards a reduction in coronary events from the combination of changes in medical treatment and coronary revascularisation.

Our trial has several important limitations. First, this was an open trial and attending clinicians might favour either CTCA or functional tests, which could have affected their decision making. Irrespective of clinician bias, it undoubtedly changed clinician behaviour and the apparent trends to improved clinical outcomes provide inferential evidence that this diagnostic test was beneficial for the patient. Second, the Kaplan-Meier curves for clinical outcomes seem to suggest that alterations in patient management consequent on the CTCA might have taken more than 6 weeks to be effectively implemented in some patients. Therefore, we cannot confidently exclude an effect on anginal symptoms and further long-term follow-up is planned. Third, the cost-effectiveness of CTCA and the downstream health-care resource utilisation do need to be studied. We intend to undertake a health economic assessment of CTCA in this clinical setting and explore whether there are specific patient subgroups that would potentially benefit from this intervention. Finally, we excluded patients older than 75 years. We were concerned that most of these patients would have evidence of coronary heart disease, and the application of CTCA to this population would be less discriminatory. We were also concerned preventive interventions that affect outcomes have a weaker effect in elderly people.<sup>19</sup> This would potentially hinder our ability to assess whether CTCA had an effect on long-term outcomes. Coronary calcification would also be higher and consequently CTCA might not be as useful in this age group.

In conclusion, in patients with suspected angina due to coronary heart disease, CTCA clarifies the diagnosis and leads to major alterations in investigations and treatments. There is a suggestion that this finding is associated with apparent improvements in fatal and non-fatal coronary events, but this needs to be confirmed by further long-term follow-up.

#### Contributors

The SCOT-HEART investigators contributed to the conception or design of the work, or the acquisition, analysis, or interpretation of data for the work; were involved in drafting the manuscript and revising it, and have given final approval of the version to be published; and are accountable for the work.

#### Declaration of interests

DN, EvB, GR, and GMcK have received honoraria and consultancy from Toshiba Medical Systems. GR has received honoraria from companies (Bracco, Bayer-Schering, GE Healthcare and Guerbet) producing contrast media.

#### Acknowledgements

This trial was funded by The Chief Scientist Office of the Scottish Government Health and Social Care Directorates (CZH/4/588), with supplementary awards from Edinburgh and Lothian's Health Foundation Trust and the Heart Diseases Research Fund. DN (CH/09/002) and MW (FS/11/014) are supported by the British Heart Foundation. DEN is the recipient of a Wellcome Trust Senior Investigator Award (WT103782A1A). AT is supported by Barts Cardiovascular Biomedical Research Unit, funded by the National Institute for Health Research. EvB is supported by the Scottish Imaging Network: A Platform of Scientific Excellence (SINAPSE). The Royal Bank of Scotland supported the provision of 320-multidetector CT for NHS Lothian and the University of Edinburgh. The Clinical Research Imaging Centre (Edinburgh) is supported by the National Health Service Research Scotland (NRS) through National Health Service Lothian Health Board. The Clinical Research Facility Glasgow and Clinical Research Facility Tayside are supported by National Health Service Research Scotland (NRS).

#### SCOT-HEART investigators

Chief Investigator: David Newby; Trial Research Fellows: Michelle Williams, Amanda Hunter, Tania Pawade, Anoop Shah; Grant Applicants: David Newby (Principal Applicant), Andrew Flapan, John Forbes, Allister Hargreaves, Stephen Leslie, Steff Lewis, Graham McKillop, Scott McLean, John Reid, James Spratt, Neal Uren; Trial Steering Committee: Adam Timmis (Chair), Colin Berry, Nicholas Boon, Liz Clark, Peter Craig, Tom Barlow, Marcus Flather, John Forbes, Steff Lewis, Chiara McCormack, Scott McLean, David Newby, Giles Roditi, Edwin van Beek, Michelle Williams, Amanda Hunter, Susan Shepherd, Marise Bucukoglu; Edinburgh Clinical Trials Unit: Steff Lewis, Valentina Assi, Richard Parker, Ashma Krishan, Chiara McCormack, Fiona Wee, Anthony Wackett, Allan Walker, Lynsey Milne, Kat Oatey; Trial Sites: Borders General Hospital, Melrose: Paul Neary, Gillian Donaldson, Terry Fairbairn, Marlene Fotheringham, Fiona Hall; Forth Valley Royal Hospital, Larbert: Allister Hargreaves, James Spratt, Stephen Glen, Sarah Perkins, Fiona Taylor, Louisa Cram, Catherine Beveridge, Avril Cairns, Frances Dougherty; Glasgow Royal Infirmary: Hany Eteiba, Alan Rae, Kate Robb, Wenda Crawford, Patricia Clarkin, Elisabeth Lennon; Ninewells Hospital, Dundee: Graeme Houston, Stuart Pringle, Prasad Guntur Ramkumar, Thiru Sudarshan, Yvonne Fogarty, Dawn Barrie, Kim Bissett, Adelle Dawson, Scott Dundas, Deborah Letham, Linda O'Neill, Valerie Ritchie, Jonathan Weir-McCall; Perth Royal Infirmary, Perth: Hamish Dougall; Royal Alexandra Hospital, Paisley: Faheem Ahmed, Alistair Cormack, Iain Findlay, Stuart Hood, Clare Murphy, Eileen Peat, Lynne McCabe, Margaret McCubbin; Royal Infirmary of Edinburgh, Edinburgh: Barbara Allen, Edwin van Beek, Miles Behan, Danielle Bertram, David Brian, Amy Cowan, Nicholas Cruden, Martin Denvir, Marc Dweck, Laura Flint, Andrew Flapan, Samantha Fyfe, Neil Grubb, Collette Keanie, Chris Lang, Tom MacGillivray, David MacLachlan, Margaret MacLeod, Saeed Mirsadraee, Avril Morrison, Nicholas Mills, David Northridge, Alyson Phillips, Laura Queripel, John Reid, Neal Uren, Nicholas Weir; St John's Hospital, Livingston; Ashok Jacob, Fiona Bett, Frances Divers, Katie Fairley, Edith Keegan, Tricia White, Julia Fowler; University Hospital, Ayr: John Gemmill, James McGowan, Margo Henry; Victoria Hospital, Kirkcaldy: Mark Francis, Dennis Sandeman, Lorraine Dinnel; Western General Hospital, Edinburgh: David Newby, Peter Bloomfield, Martin Denvir, Peter Henriksen, Donald MacLeod, Avril Morrison; Western Infirmary, Glasgow/Institute of Cardiovascular and Medical

Sciences, University of Glasgow: Colin Berry, Kenneth Mangion, Ify Mordi, Giles Roditi, Nikolaos Tzemos, Eugene Connolly, Heather Boylan, Ammani Brown, Lesley Farrell, Alison Frood, Caroline Glover, Janet Johnstone, Kirsten Lanaghan, Deborah McGlynn, Lorraine McGregor, Evonne McLennan, Laura Murdoch, Victoria Paterson, Fiona Teyhan, Marion Teenan, Rosie Woodward, Tracey Steedman.

#### References

- Gandhi MM, Lampe FC, Wood DA. Incidence, clinical characteristics, and short-term prognosis of angina pectoris. *Br Heart J* 1995; **73**: 193–98.
- Kravitz RL, Laouri M, Kahan JP, et al. Validity of criteria used for detecting underuse of coronary revascularization. *JAMA* 1995; **274**: 632–38.
- Newby DE, Fox KAA, Flint LL, Boon NAA. A 'same day' direct-access chest pain clinic: improved management and reduced hospitalization. *QJM* 1998; **91**: 333–37.
- Sekhri N, Feder GS, Junghans C, Hemingway H, Timmis AD. How effective are rapid access chest pain clinics? Prognosis of incident angina and non-cardiac chest pain in 8762 consecutive patients. *Heart* 2007; **93**: 458–63.
- Boyle RM. Value of rapid-access chest pain clinics. *Heart* 2007; **93**: 415–16.
- Miller JM, Rochitte CE, Dewey M, et al. Diagnostic performance of coronary angiography by 64-row CT. *N Engl J Med* 2008; **359**: 2324–36.
- Mowatt G, Cummins E, Waugh N, et al. Systematic review of the clinical effectiveness and cost-effectiveness of 64-slice or higher computed tomography angiography as an alternative to invasive coronary angiography in the investigation of coronary artery disease. *Health Technol Assess* 2008; **12**: iii–iv, ix–143.
- Schroeder S, Achenbach S, Bengel F, et al, and the Working Group Nuclear Cardiology and Cardiac CT, and the European Society of Cardiology, and the European Council of Nuclear Cardiology. Cardiac computed tomography: indications, applications, limitations, and training requirements: report of a Writing Group deployed by the Working Group Nuclear Cardiology and Cardiac CT of the European Society of Cardiology and the European Council of Nuclear Cardiology. *Eur Heart J* 2008; **29**: 531–56.
- Dewey M, Zimmermann E, Deissenrieder F, et al. Noninvasive coronary angiography by 320-row computed tomography with lower radiation exposure and maintained diagnostic accuracy: comparison of results with cardiac catheterization in a head-to-head pilot investigation. *Circulation* 2009; **120**: 867–75.
- Layritz C, Schmid J, Achenbach S, et al. Accuracy of prospectively ECG-triggered very low-dose coronary dual-source CT angiography using iterative reconstruction for the detection of coronary artery stenosis: comparison with invasive catheterization. *Eur Heart J Cardiovasc Imaging* 2014; **15**: 1238–45.
- Hoffmann U, Truong QA, Schoenfeld DA, et al, and the ROMICAT-II Investigators. Coronary CT angiography versus standard evaluation in acute chest pain. *N Engl J Med* 2012; **367**: 299–308.
- National Institute for Clinical healthcare Excellence (NICE). Chest pain of recent onset: assessment and diagnosis of recent onset chest pain or discomfort of suspected cardiac origin. NICE Clinical Guideline 95. 2010.
- Newby DE, Williams MC, Flapan AD, et al. Role of multidetector computed tomography in the diagnosis and management of patients attending the rapid access chest pain clinic, The Scottish computed tomography of the heart (SCOT-HEART) trial: study protocol for randomized controlled trial. *Trials* 2012; **13**: 184.
- Woodward M, Brindle P, Tunstall-Pedoe H, and the SIGN group on risk estimation. Adding social deprivation and family history to cardiovascular risk assessment: the ASSIGN score from the Scottish Heart Health Extended Cohort (SHHEC). *Heart* 2007; **93**: 172–76.
- Spertus JA, Winder JA, Dewhurst TA, et al. Development and evaluation of the Seattle Angina Questionnaire: a new functional status measure for coronary artery disease. *J Am Coll Cardiol* 1995; **25**: 333–41.
- Zhang J, Yu KF. What's the relative risk? A method of correcting the odds ratio in cohort studies of common outcomes. *JAMA* 1998; **280**: 1690–91.
- Boden WE, O'Rourke RA, Teo KK, et al, and the COURAGE Trial Research Group. Optimal medical therapy with or without PCI for stable coronary disease. *N Engl J Med* 2007; **356**: 1503–16.
- Fox KA, Poole-Wilson PA, Henderson RA, et al, and the Randomized Intervention Trial of unstable Angina Investigators. Interventional versus conservative treatment for patients with unstable angina or non-ST-elevation myocardial infarction: the British Heart Foundation RITA 3 randomised trial. *Lancet* 2002; **360**: 743–51.
- Shepherd J, Blauw GJ, Murphy MB, et al, and the PROSPER study group. PROspective Study of Pravastatin in the Elderly at Risk. Pravastatin in elderly individuals at risk of vascular disease (PROSPER): a randomised controlled trial. *Lancet* 2002; **360**: 1623–30.