



THE UNIVERSITY *of* EDINBURGH

Edinburgh Research Explorer

The EGF/CSF-1 paracrine invasion loop can be triggered by heregulin beta1 and CXCL12

Citation for published version:

Hernandez, L, Smirnova, T, Kedrin, D, Wyckoff, J, Zhu, L, Stanley, ER, Cox, D, Muller, WJ, Pollard, JW, Van Rooijen, N & Segall, JE 2009, 'The EGF/CSF-1 paracrine invasion loop can be triggered by heregulin beta1 and CXCL12', *Cancer Research*, vol. 69, no. 7, pp. 3221-7. <https://doi.org/10.1158/0008-5472.CAN-08-2871>

Digital Object Identifier (DOI):

[10.1158/0008-5472.CAN-08-2871](https://doi.org/10.1158/0008-5472.CAN-08-2871)

Link:

[Link to publication record in Edinburgh Research Explorer](#)

Document Version:

Peer reviewed version

Published In:

Cancer Research

Publisher Rights Statement:

Published in final edited form as:
Cancer Res. 2009 April 1; 69(7): 3221–3227.
Published online 2009 March 17. doi: 10.1158/0008-5472.CAN-08-2871

General rights

Copyright for the publications made accessible via the Edinburgh Research Explorer is retained by the author(s) and / or other copyright owners and it is a condition of accessing these publications that users recognise and abide by the legal requirements associated with these rights.

Take down policy

The University of Edinburgh has made every reasonable effort to ensure that Edinburgh Research Explorer content complies with UK legislation. If you believe that the public display of this file breaches copyright please contact openaccess@ed.ac.uk providing details, and we will remove access to the work immediately and investigate your claim.





Published in final edited form as:

Cancer Res. 2009 April 1; 69(7): 3221–3227. doi:10.1158/0008-5472.CAN-08-2871.

The EGF/CSF-1 Paracrine Invasion Loop can be Triggered by Heregulin Beta 1 and CXCL12

Lorena Hernandez^{1,◇}, Tatiana Smirnova^{1,◇}, Dmitriy Kedrin¹, Jeffrey Wyckoff^{1,2}, Liyin Zhu^{3,4}, E. Richard Stanley³, Dianne Cox^{1,3}, William J. Muller⁵, Jeffrey W. Pollard³, Nico Van Rooijen⁶, and Jeffrey E. Segall^{1,2,*}

¹ Departments of Anatomy and Structural Biology, Albert Einstein College of Medicine, Bronx, NY 10461, USA ² Gruss Lipper Center for Biophotonics, Albert Einstein College of Medicine, Bronx, NY 10461, USA ³ Developmental and Molecular Biology, Albert Einstein College of Medicine, Bronx, NY 10461, USA ⁴ Center of Reproductive Biology and Women's Health Albert Einstein College of Medicine, Bronx, NY 10461, USA ⁵ McGill University, Life Sciences Complex, Rm 523, 3655 Sir William, Montreal Quebec, Canada, H3G 1Y6 ⁶ Department of Molecular Cell Biology, Free University Medical Center, Amsterdam, The Netherlands

Abstract

An important step in the process of metastasis from the primary tumor is invasive spread into the surrounding stroma. Using an *in vivo* invasion assay, we have previously shown that imposed gradients of EGF or CSF-1 can induce invasion through an EGF/CSF-1 paracrine loop between cancer cells and macrophages. We now report that invasion induced by other ligands also relies upon this EGF/CSF-1 paracrine invasive loop. Using an *in vivo* invasion assay, we show that MTLn3 breast cancer cells overexpressing ErbB3 exhibit enhanced invasion compared to control MTLn3 cells in response to the ErbB3 ligand HRG- β 1. The invasive response of both MTLn3-ErbB3 and transgenic MMTV-Neu tumors to HRG- β 1 is inhibited by blocking EGFR, CSF-1R, or macrophage function, indicating that invasiveness to HRG- β 1 is dependent upon the EGF/CSF-1 paracrine loop. Furthermore, we show that CXCL12 also triggers *in vivo* invasion of transgenic MMTV-PyMT tumors in an EGF/CSF-1 dependent manner. Although the invasion induced by HRG- β 1 or CXCL12 is dependent on the EGF/CSF-1 paracrine loop, invasion induced by EGF is not dependent upon HRG- β 1 or CXCL12 signaling, demonstrating an asymmetric relationship between different ligand/receptor systems in driving invasion. Our results identify a stromal/tumor interaction that acts as an engine underlying invasion induced by multiple ligands.

INTRODUCTION

Metastasis is a multi-step process involving invasion of the basement membrane and surrounding stroma, intravasation, extravasation and survival/growth of cancer cells at new sites (1). Our research has focused on elucidating what drives cancer cells to leave the primary tumor, cross the basement membrane, resulting in invasion of the surrounding stroma, with the expectation of finding novel targets of metastasis that may be used to prevent the occurrence of this fatal process. With the development of an *in vivo* invasion assay in which invasive cells are collected from the primary tumor using needles preloaded with Matrigel and a chemoattractant (2), new insights into the process of invasion have been made. Employing this

*Corresponding author Jeffrey E. Segall, Department of Anatomy and Structural Biology, 1300 Morris Park Avenue, Albert Einstein College of Medicine, Bronx, NY 10461, USA, Telephone: 718-678-1109, segall@accom.yu.edu.

[◇]These authors contributed equally to this manuscript

in vivo invasion assay to collect invasive cells from rat MTLn3 breast primary xenograft tumors as well as from transgenic mice in which mammary tumors are induced by the expression of the Polyoma Middle T oncoprotein from the MMTV promoter (PyMT) (3), it was observed that macrophages aided cancer cells in invading the surrounding tissue. This was due to a paracrine communication loop involving secretion of CSF-1 by cancer cells that would activate macrophages to secrete EGF, a chemoattractant for the cancer cells that would drive their invasion (4). Inhibition of either EGF or CSF-1 signaling resulted in decreased invasion to background levels (3), suggesting that EGF/CSF-1 signaling was the key to *in vivo* invasion in response to either EGF or CSF-1 in this model.

This research implicated the tumor microenvironment, especially stromal cells such as macrophages, in collaborating in the process of metastasis. Tumor associated macrophages, TAMs, have been correlated with poor prognosis in several cancers including breast, with high density of TAMs associated with metastasis (5,6). Furthermore, overexpression of CSF-1, a major growth factor involved in the survival, differentiation and chemotaxis of macrophages has been shown to correlate with poor prognosis in breast cancer (7,8). Studies using transgenic PyMT mice carrying a null mutation in the CSF-1 gene showed that recruitment of macrophages to the primary tumor was dramatically decreased in this model and accordingly, there was slower tumor progression with significantly reduced metastasis that was rescued upon expression of CSF-1 in the mammary tumor epithelium (9). Furthermore, imaging of PyMT tumors in which macrophages were labeled with Texas Red dextran showed that tumor cell motility was associated with the presence of macrophages, with more frequent motility associated with perivascular macrophages (10), suggesting again a close interaction between carcinoma cells and macrophages within the primary tumor that facilitates invasion.

In vitro characterization of invasion typically involves studying cancer cell traversal of a Matrigel barrier. Using this assay, several chemoattractants have been found to stimulate invasion, including CXCL12 (SDF-1) and Heregulin Beta 1 (HRG β 1). CXCL12 is a chemokine that binds to CXCR4. CXCR4 can be highly expressed on breast cancer cells as compared to normal breast tissue (11), and has been implicated as a predictor of poor prognosis in patients with breast cancer (12). In MDA-MB-231 breast cancer cells it has been shown that CXCL12 stimulates their invasion *in vitro*, as well as plays a key role in the metastatic behavior of these cells *in vivo* (11). HRG β 1, an EGF-like ligand that binds and activates ErbB3 and ErbB4, members of the ErbB family of receptor tyrosine kinases (13), has been implicated in modulating the invasive behavior of breast cancer cells. HRG β 1 stimulates the *in vitro* invasive behavior of MDA-MB-231, and downregulation of HRG β 1 expression results in impaired invasiveness *in vitro* and metastasis *in vivo* (14). HRG β 1 also has been shown to induce the migration and invasion of MCF-7 and T47D cells *in vitro* through activation of the ErbB2 and ErbB3 receptors (15). Overexpression of ErbB3 in MTLn3 cells results in enhanced chemotaxis to HRG β 1 as well as in increased metastatic behavior of MTLn3 cells, including leaving the primary tumor in greater numbers (16).

Since CXCL12 and HRG β 1 have been implicated in breast cancer cell invasion, we tested their ability to stimulate invasion *in vivo* in the tumor microenvironment using the *in vivo* invasion assay. Remarkably, we found that although HRG β 1 can stimulate the *in vivo* invasion of MTLn3 cells overexpressing the ErbB3 receptor, this invasion is inhibited by addition of Iressa, an EGFR tyrosine kinase inhibitor, or an EGF neutralizing antibody, as well as by a CSF-1R blocking antibody or by macrophage depletion using liposome encapsulated clodronate. This dependency on EGF/CSF-1 signaling to stimulate invasion *in vivo* was recapitulated in the MMTV-Neu transgenic animal model of mammary cancer in which ErbB3 is also expressed (17). In addition, we found that *in vivo* invasion towards a G-protein coupled receptor ligand, CXCL12, is also dependent upon the EGF/CSF-1 paracrine loop. Our results suggest that targeting EGF or CSF-1 signaling can be effective in blocking invasion in response to

heterologous ligands through a novel dependence on tumor/stroma interactions revealed *in vivo*.

MATERIALS AND METHODS

Cell lines and animal models

All procedures involving mice were conducted in accordance with the National Institutes of Health regulations concerning the use and care of experimental animals. The study of mice was approved by the Albert Einstein College of Medicine animal use committee. The rat mammary carcinoma MTLn3 cells transduced with the empty pLXSN retroviral vector or vector containing human ErbB3 receptor (16) were grown in α -MEM supplemented with 5% fetal bovine serum (FBS) and penicillin/streptomycin solution (Life Technologies). The tumor cells were grown to 70–85% confluence before being harvested. Cells were detached using PBS-EDTA and 5 scraped using a rubber policeman. 5×10^5 cells were injected into the right fourth mammary fat pad from the head of 5-to-7-week-old female severe combined immunodeficient (SCID) mice (National Cancer Institute, Bethesda, MD). Tumors were allowed to grow for 4 weeks before cell collection. FVB mice transgenic for the polyoma virus middle T (PyVT or PyMT) oncogene under the mouse mammary tumor virus (MMTV) long terminal repeat 206 (LTR), generated as previously described (18), were used for *in vivo* invasion assays at 12–14 weeks of age. FVB mice transgenic for *Neu* driven by the MMTV LTR containing an activating deletion in the extracellular region (17) were used in *in vivo* invasion assays and for primary tumor harvest at 31–33 weeks of age.

In vivo invasion assay

Cell collection into needles placed in the primary tumor of anesthetized mice was carried out as described previously (2). Invasive cells were collected into 33-gauge Hamilton needles (Fisher 14-815-423) filled with Matrigel (Beckton Dickinson 356234) diluted 1:10 with L15-BSA and a chemoattractant for 4 hours. At the end of collection, the contents of the needles were extruded with approximately 30ul DAPI using a syringe onto a coverslip. The chemoattractants used in this assay include HRG β 1 at a concentration of 50nM (R & D Systems 396-HB), EGF at 25nM (Life Technologies), and CXCL12 α at 62.5nM (R & D Systems 460-SD). To inhibit activation of the EGF receptor through EGF binding, an anti-mouse EGF neutralizing antibody (R & D Systems AF2028) was used at a concentration of 20 μ g/ml. To inhibit activity of the EGF receptor, Iressa (AstraZeneca), a tyrosine kinase inhibitor specific for the EGF receptor, was used at 1 μ M. For inhibiting the CSF-1 receptor, a purified monoclonal anti-mouse CSF-1 receptor antibody (AFS98) (19) was used at 15 μ g/ml. To block activation of CXCR4, AMD3100 was used at 100nM (Sigma A5602). To block HRG β 1 mediated signaling, an ErbB3 antibody that blocks binding of HRG β 1 to the ErbB3 receptor was used (Fisher HER-3 Ab-5). As a control antibody for the experiments involving signaling inhibition using blocking/neutralizing antibodies, a mouse IgG antibody was used at the same concentration used for the experimental antibodies (Jackson ImmunoResearch 015-000-003). To functionally impair macrophages in mice bearing tumors, clodronate liposomes were administered systemically. Empty (control) and clodronate-containing liposomes were administered by tail vein into mice 48 hours prior to the *in vivo* invasion assay. Liposomes were prepared as detailed in (20) using clodronate at a concentration of 2.5 grams per 10 ml PBS. Clodronate (or Cl2MDP) was a gift of Roche Diagnostics GmbH, Mannheim, Germany. Phosphatidylcholine (LIPOID E PC) was obtained from Lipoid GmbH, Ludwigshafen, Germany. Cholesterol was purchased from SIGMA Chem.Co., USA. Animals were injected with 100 μ l of liposome solution per 10g of weight.

Determination of cell types collected in the *in vivo* invasion assay

After 4 hour collection, the invasive cells were extruded from the needles using 10% paraformaldehyde into poly-L-lysine coated MatTek dishes and fixed for 1 hour at room temp. To block non-specific binding the samples were incubated overnight at 4°C in Tris-buffered saline (TBS)-1% FBS. The blocking solution was removed, cells washed with TBS-1% BSA and incubated with a primary antibody mixture of mouse anti-ErbB3 antibody (Neomarkers MS-303) for carcinoma cells and rat anti-F4/80 (21) for macrophages in TBS-1% BSA. After 1 hour incubation with the primary antibodies, the cells were washed with TBS-1% BSA and incubated in a mixture of goat anti-mouse Cy3 and sheep anti-rat FITC. The cells were rinsed and left in TBS-1% BSA with 4',6 -diamidino-2-phenylindole (DAPI) and counted using a fluorescence microscope.

Microchemotaxis chamber assay

A 48-well microchemotaxis chamber (Neuroprobe, Cabin John, MD) was used as described previously (16). Briefly, cells were starved for 3 hours in L15 media supplemented with 0.35% BSA (L15-BSA) at 37°C, then detached using PBS-EDTA and loaded into the top wells of the microchemotaxis chamber, 20,000 cells per well. Cells were allowed to migrate for 4 hours at 37°C through a collagen-coated 8µm pore filter (Neuroprobe) towards bottom wells filled with either EGF or HRGβ1 diluted in L15-BSA with or without EGF neutralizing antibody (R & D Systems AF2028), or to L15-BSA alone. The filter was then taken out, fixed in 10% paraformaldehyde for 1 hour, nonmigrating cells were removed from the top surface of the filter, and the remaining cells on the lower surface were stained overnight in hematoxylin staining solution (Fisher, CS402-1D). The membrane was then washed in de-ionized water and migrated cells were counted using a light microscope.

Primary tumor cell culturing and CSF-1 ELISA

After the animal was euthanized, the primary tumor was removed, rinsed briefly in 70% ethanol and washed with PBS. In a petri dish with PBS, the tumor was minced until only small clumps remained. The minced tumor was transferred into a 50 ml conical tube into 10ml digestion medium consisting of growth medium supplemented with 300 U/ml collagenase (Sigma C5138) and 100 U/ml hyaluronidase (Sigma H3506), and incubated in a 37°C shaker for 30 mins. Tumor cells and clumps were centrifuged at 1000rpm, washed 3X with PBS and resuspended in growth medium (DMEM/F12 (Fisher MT10092CV) supplemented with 10% FBS, and 50U/ml Pen/Strep, 10µg/ml insulin (Sigma I5523), 1mg/ml BSA, 5µg/ml linoleic acid complex (Sigma L1376), 20U/ml Fungizone (Invitrogen 15290-018), 50µg/ml Gentamicin (Sigma G-1272), and 1.2g sodium bicarbonate per 1000 ml medium) and plated at densities varying from 1 to 5×10^6 on 10cm plates (22). The following day the cultures were washed with growth medium and medium was changed every day following that. Cells were cultured for 5–10 days before they were used for *in vitro* stimulations. Cells were grown to 85–90% confluency, starved for 3 hours in L15-BSA and stimulated for 4 hours with 12.5nM HRGβ1 in L15-BSA. After 4 hours, the supernatants were collected, spun down to remove debris and stored at -20°C. The samples were tested for the presence of secreted CSF-1 using a mouse CSF-1 ELISA kit (R & D Systems MMC00).

Statistical analysis

Multiple comparisons were performed using ANOVA and 2 condition comparisons performed using t-test.

RESULTS

HRGβ1 stimulates the *in vivo* invasion of MTLn3-ErbB3 cells

ErbB3 overexpression in MTLn3 cells increases their *in vitro* chemotactic response to HRGβ1 through the formation of active ErbB2-ErbB3 heterodimers (16), as well as their metastatic behavior *in vivo*. To investigate whether HRGβ1 could also stimulate MTLn3 rat mammary adenocarcinoma cell chemotaxis and invasion *in vivo*, cells expressing increased levels of ErbB3 (MTLn3-ErbB3) or empty vector control cells (MTLn3-pLXSN) were injected into the mammary fat pads of SCID mice to form orthotopic tumors. Four weeks post-injection, microneedles containing Matrigel and a chemoattractant were inserted into the primary tumors to collect invasive cells. HRGβ1 induced *in vivo* invasion in MTLn3-ErbB3 tumors (Fig. 1A) in a dose dependent fashion, with the optimal concentration being 50nM HRGβ1. Using EGF as a chemoattractant, comparable invasiveness of MTLn3-pLXSN and MTLn3-ErbB3 cells was observed, indicating that overexpression of ErbB3 did not affect the ability of MTLn3 cells to respond to EGF (Fig. 1B). However, MTLn3-ErbB3 tumors showed a greater *in vivo* invasion in response to HRGβ1 compared to control pLXSN tumors (Fig 1B).

Previous studies have shown that macrophages co-migrate with breast cancer cells in response to EGF stimulation in the needle collection assay (3). To assess whether macrophages also co-migrate with cancer cells in HRGβ1-mediated *in vivo* invasion, the invasive cells collected upon HRGβ1 stimulation from MTLn3-ErbB3 tumors were fixed and stained with an ErbB3 antibody to detect MTLn3-ErbB3 cells and an F4/80 antibody to detect macrophages. MTLn3-ErbB3 cells represented 75% ($\pm 5\%$) of the invasive population and macrophages 25% ($\pm 5\%$), with no other cell types present in significant amounts, similar to what we have previously reported for the *in vivo* invasion in response to EGF (3). To test whether macrophages play a role in the invasive behavior of MTLn3-ErbB3 cells in response to HRGβ1, macrophages were functionally impaired using clodronate-containing-liposomes (20). SCID mice bearing MTLn3-ErbB3 tumors were injected i.v. with clodronate-containing-liposomes or empty liposomes as a negative control 48 hours prior to performing the *in vivo* invasion assay. As described in the Supplemental Data and Supplemental Fig. 1, although the number of macrophages in the primary tumor is not decreased, clodronate liposome treatment results in reduced macrophage function as measured by macropinocytosis of 70kD dextran. There was a significantly reduced invasive response to HRGβ1 in tumors that had been pretreated with clodronate, compared to those pretreated with empty liposomes (ratio of HRGβ1-induced *in vivo* invasion in the presence of clodronate-containing liposomes to empty liposomes: 0.6 ± 0.1 , $p < 0.01$); while basal invasion in the absence of attractant was not affected. This indicates that macrophages contribute to the invasive behavior of MTLn3-ErbB3 cells in response to HRGβ1 stimulation.

The EGF/CSF-1 paracrine loop is required for the *in vivo* invasion of MTLn3-ErbB3 cells in response to HRGβ1

The previous section suggested that macrophages could play an active role in HRGβ1-induced *in vivo* invasion of MTLn3-ErbB3 cells. We therefore tested whether the EGF/CSF-1 paracrine loop was necessary for HRGβ1-induced *in vivo* invasion. We first evaluated the role of CSF-1 signaling by blocking the CSF-1 receptor on macrophages using a CSF-1 receptor blocking antibody. As a positive control, we confirmed that the invasion of MTLn3-ErbB3 tumor cells towards EGF was inhibited upon blockage of the CSF-1 receptor ($p < 0.05$) (Fig. 2A, left side). Similarly, addition of the CSF-1 receptor antibody also inhibited HRGβ1-stimulated *in vivo* invasion by MTLn3-ErbB3 tumors ($p < 0.005$) (Fig. 2A, right side), indicating that activation of the CSF-1 receptor in macrophages is required for MTLn3-ErbB3 cells to invade in response to HRGβ1.

To determine whether EGF signaling also plays a role in the invasive response of MTLn3-ErbB3 cells to HRG β 1 stimulation, an EGFR- specific tyrosine kinase inhibitor, Iressa (23), was added to microneedles loaded with HRG β 1 (Fig. 2B). Addition of Iressa inhibited the *in vivo* invasion of MTLn3-ErbB3 cells to HRG β 1, bringing the response down to basal levels ($p < 0.05$). This suggests that EGFR signaling is required for MTLn3-ErbB3 cells to invade when stimulated with HRG β 1. To test whether EGF specifically was required, we determined the effect of an EGF antibody that blocks the binding of EGF to its receptor, EGFR (Fig. 2C). The EGF antibody significantly inhibited the *in vivo* invasion of MTLn3-ErbB3 cells to EGF as anticipated ($p < 0.05$, Fig. 2C, left side), but also resulted in inhibition of the *in vivo* invasion of MTLn3-ErbB3 cells to HRG β 1 ($p < 0.005$, Fig. 2C, right side). To check that the neutralizing EGF antibody was specific in blocking EGF-mediated signaling and does not affect HRG β 1 binding and chemotaxis, a Boyden chamber was used to analyze the *in vitro* chemotaxis behavior of MTLn3-ErbB3 cells in the presence of the EGF antibody. While the EGF antibody itself had no effect in the basal motility of MTLn3-ErbB3 cells ($p < 0.6$, data not shown), the EGF antibody blocked the chemotaxis of MTLn3-ErbB3 cells to EGF ($p < 0.005$) but not to HRG β 1 ($p < 0.15$) (Fig. 2D), demonstrating that the antibody was not directly affecting HRG β 1 chemotaxis. This result indicates that HRG β 1-induced *in vivo* invasion is dependent on the secretion of EGF within the primary tumor. In summary, these results indicate that HRG β 1-mediated *in vivo* invasion of MTLn3-ErbB3 tumors is dependent on EGF/CSF-1 signaling within the primary tumor.

An ErbB2 transgenic model recapitulates the MTLn3-ErbB3 xenograft model of *in vivo* invasion to HRG β 1

To determine whether HRG β 1 mediated *in vivo* invasion is dependent on EGF and CSF-1 signaling in other breast cancer models, we compared the MMTV-PyMT and MMTV-Neu transgenic models (17,18). We have previously shown that HRG β 1 did not induce invasion of MMTV-PyMT tumors (3), but MMTV-Neu tumors show high levels of expression of ErbB3 (17). Consistent with their ErbB3 expression, MMTV-Neu tumors showed enhanced *in vivo* invasion in response to HRG β 1 ($p < 0.005$) whereas MMTV-PyMT tumors did not (Fig. 3A). We next tested the effect of blocking EGF and CSF-1 receptor signaling on HRG β 1-induced *in vivo* invasion (Fig. 3B). Addition of the EGF neutralizing antibody ($p < 0.005$) or CSF-1 receptor blocking antibody ($p < 0.005$) resulted in inhibition of MMTV-Neu tumor invasion in response to HRG β 1. We conclude that HRG β 1 stimulates *in vivo* invasion in MMTV-Neu tumors also by activating the EGF/CSF-1 paracrine loop. To test how HRG β 1 could trigger the EGF/CSF-1 paracrine loop we stimulated MMTV-Neu primary tumor cells *in vitro* with HRG β 1 and tested the supernatants for CSF-1 secretion. Cultured Neu primary tumor cells were stimulated for 4 hours with HRG β 1 (the same time used for the *in vivo* invasion assay), and the supernatants were collected and assayed for the presence of CSF-1 protein using a commercially available ELISA. There was a modest but significant increase in CSF-1 secretion upon HRG β 1 stimulation of Neu tumor cells (ratio of HRG β 1 stimulated to buffer stimulated: 1.60 ± 0.66 , mean and standard deviation, $N=6$, $p < 0.05$). Thus, HRG β 1 induction of CSF-1 production could induce the EGF/CSF-1 paracrine loop.

CXCL12 mediated *in vivo* invasion in MMTV-PyMT tumors is also dependent on activation of EGF/CSF-1 signaling

We had previously found that CXCL12 also induced *in vivo* invasion in MMTV-PyMT tumors and that this invasive response could be blocked upon addition of Iressa (J. Wyckoff and D. Cox, unpublished, Supplemental Fig. 2). Given our studies showing that HRG β 1-induced invasion was dependent on the EGF/CSF-1 paracrine loop, we decided to test whether a different type of ligand, such as CXCL12, which activates the G-protein coupled receptor CXCR4, could also activate the EGF/CSF-1 paracrine loop. Similar to our results with HRG β 1-induced invasion, both the neutralizing EGF antibody ($p < 0.005$) and the CSF-1R

blocking antibody ($p < 0.005$) resulted in decreased *in vivo* invasion of MMTV-PyMT tumors in response to CXCL12 (Fig. 4). To evaluate the contribution of macrophages to CXCL12 *in vivo* invasion, MMTV-PyMT mice were injected with either empty or clodronate-containing liposomes via tail vein 48 hours prior to measurement. Clodronate treatment resulted in significantly reduced *in vivo* invasion to CXCL12 in PyMT tumors (the ratio of *in vivo* invasion to CXCL12 in tumors pretreated with clodronate containing liposomes to empty liposomes was 0.4 ± 0.2 , $p < 0.04$).

CXCL12 and HRG β 1 signaling are not required for invasion in response to EGF

Given that CXCL12 and HRG β 1-induced invasion are dependent on EGF/CSF-1 signaling, we then wished to determine whether EGF/CSF-1 induced invasion was in turn dependent upon CXCL12 or HRG β 1. We first tested whether CXCL12 signaling was necessary for EGF/CSF-1 *in vivo* invasion. We added the CXCR4 inhibitor AMD3100 (24) to needles containing CXCL12 as a positive control to confirm that AMD3100 could block CXCL12 mediated *in vivo* invasion from PyMT tumors. As expected, addition of AMD3100 resulted in inhibition of CXCL12 mediated *in vivo* invasion from PyMT tumors ($p < 0.005$) (Fig. 5A); however, addition of AMD3100 to EGF containing needles did not result in impaired *in vivo* invasion to EGF in PyMT tumors ($p < 0.4$) (Fig. 5B). These results demonstrate that although CXCL12-induced *in vivo* invasion is dependent on EGF/CSF-1 signaling, EGF-induced *in vivo* invasion is not dependent on CXCL12 signaling.

Similarly, to test the role of HRG β 1 in EGF-induced *in vivo* invasion, we used an anti-ErbB3 blocking antibody. ErbB3 is the major receptor for HRG β 1 in MTLn3-ErbB3 cells (16), and this antibody blocks the binding site for HRG β 1 on ErbB3. Addition of the ErbB3 blocking antibody inhibited invasion of MTLn3-ErbB3 tumors to HRG β 1 ($p < 0.005$) (Fig. 5C) but not to EGF ($p < 0.4$) (Fig. 5D), indicating that although HRG β 1-induced *in vivo* invasion is dependent on EGF signaling, EGF-induced *in vivo* invasion is not dependent on HRG β 1.

DISCUSSION

We have previously shown that breast cancer cells invade surrounding breast tissue with the help of macrophages (3). This process involves a paracrine communication loop between cancer cells and macrophages in which cancer cells secrete CSF-1, a chemoattractant for macrophages. Macrophages are in turn stimulated by CSF-1 and secrete EGF, a ligand that binds to the EGF receptor in breast cancer cells and directs their chemotaxis (4). Within the primary tumor, externally imposed gradients of EGF or CSF-1 will induce cancer cell and macrophage invasion up the gradient. We report here for the first time that other ligand/receptor systems can induce *in vivo* invasion responses that are dependent upon this EGF/CSF1 paracrine loop. Both a xenograft model (MTLn3-ErbB3 (16)) overexpressing the receptor for heregulin, ErbB3, and a transgenic model (MMTV-Neu (17)) that expresses ErbB3, show heregulin-induced invasion. This heregulin-induced invasion is dependent on macrophage function as indicated by clodronate liposome inhibition, as well as by inhibition using a blocking CSF-1R antibody. Both an EGFR-specific inhibitor, Iressa, as well as an anti-EGF antibody, demonstrate that EGFR function and signaling via extracellular EGF are required for the heregulin-induced invasion, but not for heregulin chemotaxis *in vitro*. A ligand for CXCR4, CXCL12 (SDF-1), induced invasion effectively in the MMTV-PyMT model (which showed no invasion in response to heregulin). CXCL12-induced *in vivo* invasion was also dependent upon macrophage function, CSF-1R function, and extracellular EGF signaling.

While inhibition of the EGF/CSF-1 paracrine loop blocked *in vivo* invasion in response to HRG β 1 and CXCL12, inhibition of either CXCR4 or ErbB3 did not block *in vivo* invasion induced by EGF. These results demonstrate that the EGF/CSF-1 *in vivo* paracrine invasion loop is independent of HRG β 1 and CXCL12, but can be triggered by these chemoattractants.

Based on these results, we propose a novel model for *in vivo* invasion (Fig. 6), in which the EGF/CSF-1 paracrine loop is an important driver of invasion within the primary tumor. In its simplest form, invasion is induced by ligands of EGFR or CSF-1R present in the tumor microenvironment, which directly feed into this “invasion engine”. In addition, if the tumor cells (or potentially the macrophages) express other receptors such as ErbB3 or CXCR4, the corresponding ligands such as heregulin or CXCL12 can activate the engine, which can then dramatically enhance the invasion response to the ligand. Both CXCL12 and heregulin are expressed in breast cancers (25–29). CXCL12 can be secreted by cancer-activated fibroblasts (30,31) while heregulin has been reported to be expressed by endothelial cells (32–34). In consequence, the invasion induced in response to the ligands secreted by these cells in the local tumor microenvironment can contribute to enhanced intravasation and metastasis by directing invasion out into the stroma and towards blood vessels. We have previously reported that the MTLn3-ErbB3 cells show enhanced intravasation and metastasis (16), and CXCR4 has also been reported to enhance breast cancer metastasis (11,35), consistent with this hypothesis. However, not all ligands are able to trigger the invasion response in the models we have tested; the macrophage chemoattractant VEGF did not induce invasion (3).

A clinical implication of these results is that inhibition of EGFR or CSF-1R signaling could provide a broader inhibition of tumor cell invasiveness than might be anticipated based simply on EGFR expression. EGFR expression levels in MTLn3 cells are slightly elevated (about 50,000 per cell (36)), but are not overexpressed to the level associated with typical EGFR overexpressors such as the MDA-MB-231 cells (700,000 receptors per cell (37)) or MDA-MB-468 cells (1.9×10^6 receptors per cell (38)). Similarly, CSF1R expression in MTLn3 cells is low (4), and MTLn3 cells do not show CSF-1 induced lamellipod extension responses (data not shown). Thus, our data suggest that invasion by breast tumors that do not show high EGFR or CSF-1R expression can still be sensitive to inhibition of these receptors due to *in vivo* paracrine interactions that can occur in the tumor microenvironment.

Supplementary Material

Refer to Web version on PubMed Central for supplementary material.

Acknowledgments

Funding was provided by CA107050 (D.C.), CA110269 (L.H.), CA77522 (T.S. and J.E.S.) and CA100324 (E.R.S., J.W., J.W.P. and J.E.S.), CBCRA and Terry Fox Foundation (W.M.), CA131270 (J.P.). J.E.S. is the Betty and Sheldon Feinberg Senior Faculty Scholar in Cancer Research.

References

1. Steeg PS. Tumor metastasis: mechanistic insights and clinical challenges. *Nat Med* 2006;12:895–904. [PubMed: 16892035]
2. Wyckoff JB, Segall JE, Condeelis JS. The collection of the motile population of cells from a living tumor. *Cancer Res* 2000;60:5401–4. [PubMed: 11034079]
3. Wyckoff J, Wang W, Lin EY, et al. A paracrine loop between tumor cells and macrophages is required for tumor cell migration in mammary tumors. *Cancer Res* 2004;64:7022–9. [PubMed: 15466195]
4. Goswami S, Sahai E, Wyckoff JB, et al. Macrophages promote the invasion of breast carcinoma cells via a colony-stimulating factor-1/epidermal growth factor paracrine loop. *Cancer Res* 2005;65:5278–83. [PubMed: 15958574]
5. Bingle L, Brown NJ, Lewis CE. The role of tumour-associated macrophages in tumour progression: implications for new anticancer therapies. *J Pathol* 2002;196:254–65. [PubMed: 11857487]
6. Scholl SM, Pallud C, Beuvon F, et al. Anti-colony-stimulating factor-1 antibody staining in primary breast adenocarcinomas correlates with marked inflammatory cell infiltrates and prognosis. *J Natl Cancer Inst* 1994;86:120–6. [PubMed: 8271294]

7. Lin EY, Gouon-Evans V, Nguyen AV, Pollard JW. The macrophage growth factor CSF-1 in mammary gland development and tumor progression. *J Mammary Gland Biol Neoplasia* 2002;7:147–62. [PubMed: 12465600]
8. Scholl SM, Lidereau R, de la Rochefordiere A, et al. Circulating levels of the macrophage colony stimulating factor CSF-1 in primary and metastatic breast cancer patients. A pilot study. *Breast Cancer Res Treat* 1996;39:275–83. [PubMed: 8877007]
9. Lin EY, Nguyen AV, Russell RG, Pollard JW. Colony-stimulating factor 1 promotes progression of mammary tumors to malignancy. *J Exp Med* 2001;193:727–40. [PubMed: 11257139]
10. Wyckoff JB, Wang Y, Lin EY, et al. Direct visualization of macrophage-assisted tumor cell intravasation in mammary tumors. *Cancer Res* 2007;67:2649–56. [PubMed: 17363585]
11. Muller A, Homey B, Soto H, et al. Involvement of chemokine receptors in breast cancer metastasis. *Nature* 2001;410:50–6. [PubMed: 11242036]
12. Kato M, Kitayama J, Kazama S, Nagawa H. Expression pattern of CXC chemokine receptor-4 is correlated with lymph node metastasis in human invasive ductal carcinoma. *Breast Cancer Res* 2003;5:R144–50. [PubMed: 12927045]
13. Breuleux M. Role of heregulin in human cancer. *Cell Mol Life Sci* 2007;64:2358–77. [PubMed: 17530167]
14. Tsai MS, Shamon-Taylor LA, Mehmi I, Tang CK, Lupu R. Blockage of heregulin expression inhibits tumorigenicity and metastasis of breast cancer. *Oncogene* 2003;22:761–8. [PubMed: 12569369]
15. Spencer KS, Graus-Porta D, Leng J, Hynes NE, Klemke RL. ErbB2 is necessary for induction of carcinoma cell invasion by ErbB family receptor tyrosine kinases. *J Cell Biol* 2000;148:385–97. [PubMed: 10648571]
16. Xue C, Liang F, Mahmood R, et al. ErbB3-dependent motility and intravasation in breast cancer metastasis. *Cancer Res* 2006;66:1418–26. [PubMed: 16452197]
17. Siegel PM, Ryan ED, Cardiff RD, Muller WJ. Elevated expression of activated forms of Neu/ErbB-2 and ErbB-3 are involved in the induction of mammary tumors in transgenic mice: implications for human breast cancer. *Embo J* 1999;18:2149–64. [PubMed: 10205169]
18. Guy CT, Cardiff RD, Muller WJ. Induction of mammary tumors by expression of polyomavirus middle T oncogene: a transgenic mouse model for metastatic disease. *Mol Cell Biol* 1992;12:954–61. [PubMed: 1312220]
19. Sudo T, Nishikawa S, Ogawa M, et al. Functional hierarchy of c-kit and c-fms in intramarrow production of CFU-M. *Oncogene* 1995;11:2469–76. [PubMed: 8545103]
20. van Rooijen N, van Kesteren-Hendriks E. “In vivo” depletion of macrophages by liposome-mediated “suicide”. *Methods Enzymol* 2003;373:3–16. [PubMed: 14714393]
21. Austyn JM, Gordon S. F4/80, a monoclonal antibody directed specifically against the mouse macrophage. *Eur J Immunol* 1981;11:805–15. [PubMed: 7308288]
22. Matulka LA, Triplett AA, Wagner KU. Parity-induced mammary epithelial cells are multipotent and express cell surface markers associated with stem cells. *Dev Biol* 2007;303:29–44. [PubMed: 17222404]
23. Wakeling AE, Guy SP, Woodburn JR, et al. ZD1839 (Iressa): an orally active inhibitor of epidermal growth factor signaling with potential for cancer therapy. *Cancer Res* 2002;62:5749–54. [PubMed: 12384534]
24. Hatse S, Princen K, Bridger G, De Clercq E, Schols D. Chemokine receptor inhibition by AMD3100 is strictly confined to CXCR4. *FEBS Lett* 2002;527:255–62. [PubMed: 12220670]
25. Burger JA, Kipps TJ. CXCR4: a key receptor in the crosstalk between tumor cells and their microenvironment. *Blood* 2006;107:1761–7. [PubMed: 16269611]
26. Kang H, Watkins G, Parr C, Douglas-Jones A, Mansel RE, Jiang WG. Stromal cell derived factor-1: its influence on invasiveness and migration of breast cancer cells in vitro, and its association with prognosis and survival in human breast cancer. *Breast Cancer Res* 2005;7:R402–10. [PubMed: 15987445]
27. Dunn M, Sinha P, Campbell R, et al. Co-expression of neuregulins 1, 2, 3 and 4 in human breast cancer. *J Pathol* 2004;203:672–80. [PubMed: 15141382]

28. Atlas E, Cardillo M, Mehmi I, Zahedkargaran H, Tang C, Lupu R. Heregulin is sufficient for the promotion of tumorigenicity and metastasis of breast cancer cells in vivo. *Mol Cancer Res* 2003;1:165–75. [PubMed: 12556556]
29. Stove C, Bracke M. Roles for neuregulins in human cancer. *Clin Exp Metastasis* 2004;21:665–84. [PubMed: 16035612]
30. Orimo A, Gupta PB, Sgroi DC, et al. Stromal fibroblasts present in invasive human breast carcinomas promote tumor growth and angiogenesis through elevated SDF-1/CXCL12 secretion. *Cell* 2005;121:335–48. [PubMed: 15882617]
31. Allinen M, Beroukhi R, Cai L, et al. Molecular characterization of the tumor microenvironment in breast cancer. *Cancer Cell* 2004;6:17–32. [PubMed: 15261139]
32. Iivanainen E, Paatero I, Heikkinen SM, et al. Intra- and extracellular signaling by endothelial neuregulin-1. *Exp Cell Res* 2007;313:2896–909. [PubMed: 17499242]
33. Lemmens K, Segers VF, Demolder M, De Keulenaer GW. Role of neuregulin-1/ErbB2 signaling in endothelium-cardiomyocyte cross-talk. *J Biol Chem* 2006;281:19469–77. [PubMed: 16698793]
34. Cote GM, Miller TA, Lebrasseur NK, Kuramochi Y, Sawyer DB. Neuregulin-1alpha and beta isoform expression in cardiac microvascular endothelial cells and function in cardiac myocytes in vitro. *Exp Cell Res* 2005;311:135–46. [PubMed: 16185687]
35. Liang Z, Wu H, Reddy S, et al. Blockade of invasion and metastasis of breast cancer cells via targeting CXCR4 with an artificial microRNA. *Biochem Biophys Res Commun* 2007;363:542–6. [PubMed: 17889832]
36. Lichtner RB, Wiedemuth M, Kittmann A, Ullrich A, Schirmacher V, Khazaie K. Ligand-induced activation of epidermal growth factor receptor in intact rat mammary adenocarcinoma cells without detectable receptor phosphorylation. *J Biol Chem* 1992;267:11872–80. [PubMed: 1318304]
37. Fitzpatrick SL, LaChance MP, Schultz GS. Characterization of epidermal growth factor receptor and action on human breast cancer cells in culture. *Cancer Res* 1984;44:3442–7. [PubMed: 6331647]
38. Filmus J, Pollak MN, Cailleau R, Buick RN. MDA-468, a human breast cancer cell line with a high number of epidermal growth factor (EGF) receptors, has an amplified EGF receptor gene and is growth inhibited by EGF. *Biochem Biophys Res Commun* 1985;128:898–905. [PubMed: 2986629]

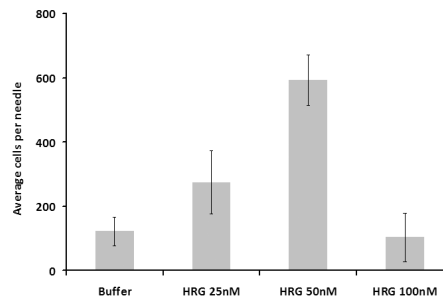
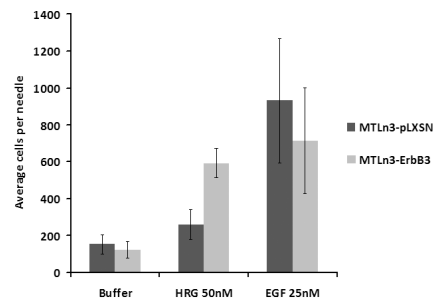
A**B**

Figure 1. HRG β 1 induces *in vivo* invasion of MTLn3-ErbB3 cells

A. Dose-response for HRG β 1-stimulated *in vivo* invasion in MTLn3-ErbB3 primary tumors ($p < .002$ by ANOVA). B. *In vivo* invasion of MTLn3-ErbB3 (light gray) and MTLn3-pLXSN (dark gray) primary tumors in response to 50nM HRG β 1 and 25nM EGF ($p < .0004$ for pLXSN and $p < .02$ for ErbB3 by ANOVA). Means and standard deviations are shown.

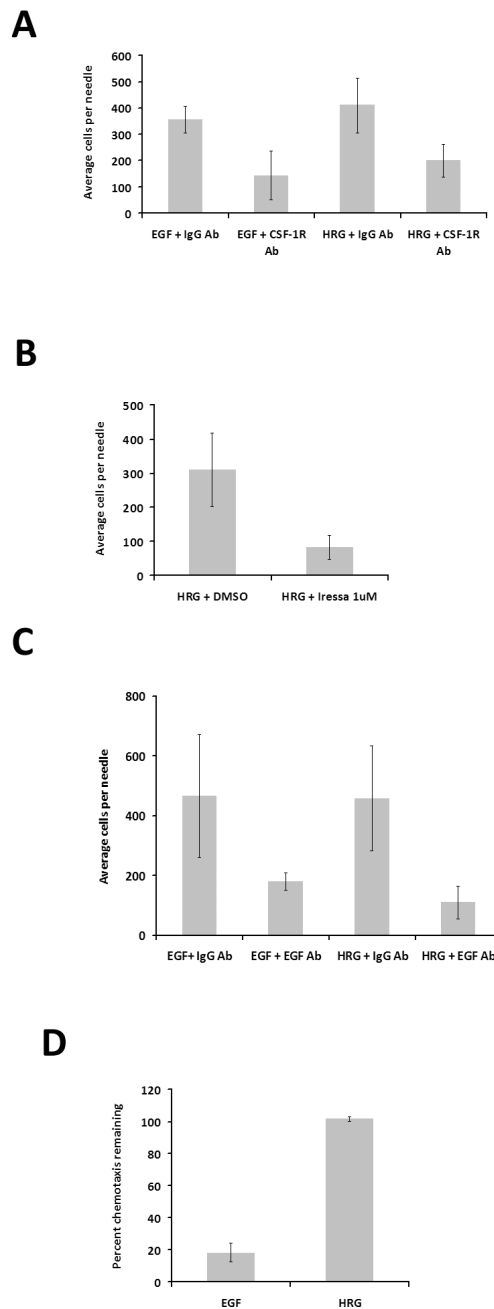


Figure 2. EGF/CSF-1 signaling is required for *in vivo* invasion of MTLn3-ErbB3 tumors in response to HRG β 1 stimulation

A. *In vivo* invasion in response to 25 nM EGF or 50 nM HRG β 1 in the presence of a control antibody, (IgG Ab), or a CSF-1 receptor-blocking antibody (CSF-1R Ab). B. The effect of 1 μ M Iressa or vehicle (DMSO) on *in vivo* invasion of MTLn3-ErbB3 primary tumors in response to 50 nM HRG β 1. C. *In vivo* invasion in response to 25 nM EGF or 50 nM HRG β 1 in the presence of a control antibody, (IgG Ab), or an EGF-binding antibody (EGF Ab). D. The effect of an EGF neutralizing antibody on chemotaxis of MTLn3-ErbB3 cells to 5 nM EGF or 12.5 nM HRG β 1 determined using a Boyden chamber. Results are shown as the percent of the chemotaxis response for each ligand remaining in the presence of the inhibitor compared

to the chemotactic response for that ligand in the absence of the inhibitor. Means and standard deviations are shown. Pairwise comparisons by t-test are provided in the text.

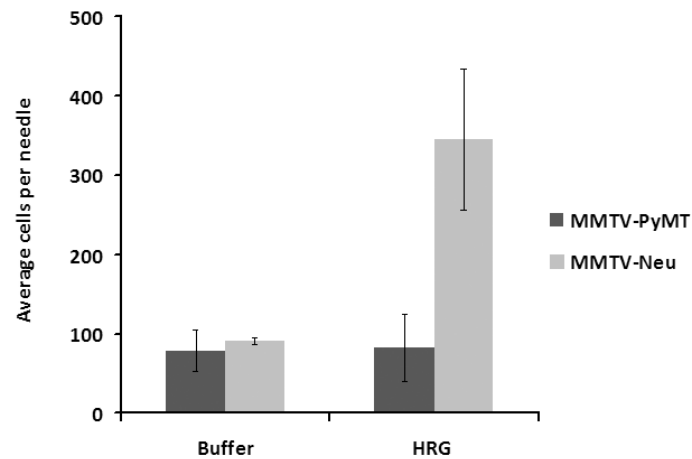
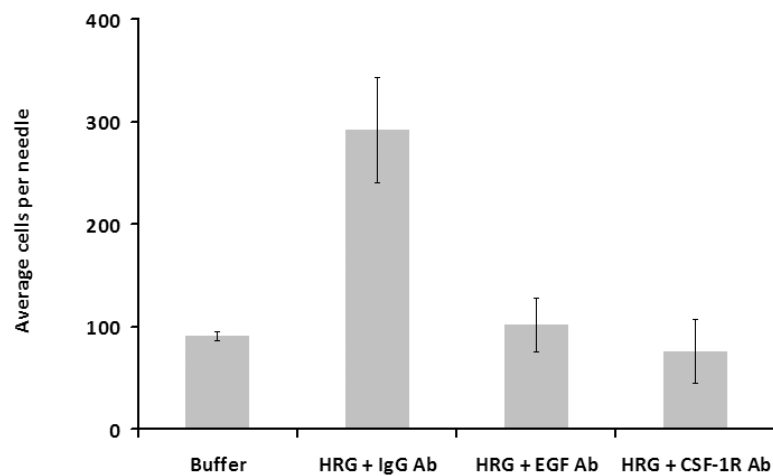
A**B**

Figure 3. MMTV-Neu tumors show *in vivo* invasion in response to HRG β 1 which requires EGF/CSF-1 signaling

A. MMTV-PyMT (dark gray) and MMTV-Neu (light gray) tumors were tested for their ability to invade *in vivo* in response to 50 nM HRG β 1. B. MMTV-Neu tumor *in vivo* invasive response to 50 nM HRG β 1 in the presence of either control antibody (IgG Ab), an EGF neutralizing antibody (EGF Ab) or a CSF-1 R blocking antibody (CSF-1R Ab) ($p < 5 \times 10^{-13}$ by ANOVA). Means and standard deviations are shown.

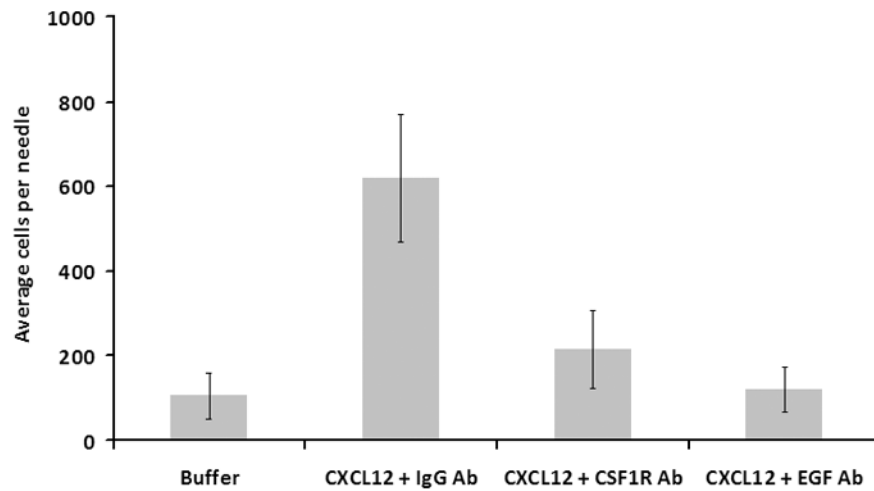


Figure 4. MMTV-PyMT tumors invade *in vivo* in response to CXCL12 stimulation and this invasion is dependent on EGF/CSF-1 signaling and macrophages

In vivo invasion of MMTV-PyMT tumors in response to 62.5 nM CXCL12 in the presence of a control antibody (IgG Ab), a CSF-1 receptor antibody (CSF-1R Ab), or an EGF neutralizing antibody (EGF Ab) ($p < 2 \times 10^{-8}$ by ANOVA). Means and standard deviations are shown.

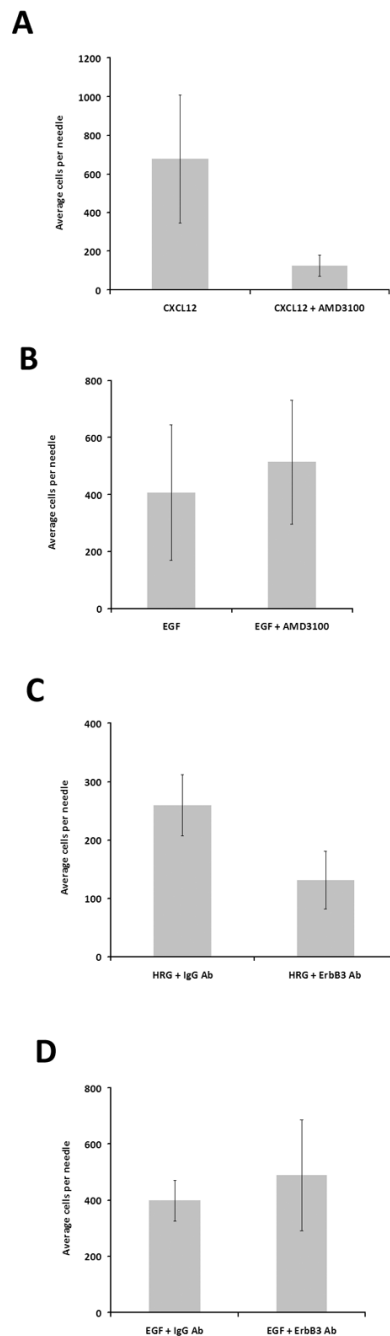


Figure 5. EGF induced *in vivo* invasion is not dependent on CXCL12 or HRG β 1 signaling

A. The effect of CXCR4 inhibition (AMD3100, 100 nM) on invasion of MMTV-PyMT tumors in response to 62.5 nM CXCL12. B. The effect of CXCR4 inhibition (AMD3100, 100 nM) on invasion of MMTV-PyMT tumors in response to EGF. C. *In vivo* invasion of MTLn3-ErbB3 tumors to 50 nM HRG β 1 in the presence of a control antibody (IgG Ab), or an ErbB3 blocking antibody (ErbB3 Ab). D. *In vivo* invasion of MTLn3-ErbB3 tumors to 25 nM EGF in the presence of a control antibody (IgG Ab), or an ErbB3 blocking antibody (ErbB3 Ab). Means and standard deviations are shown. Pairwise comparisons by t-test are provided in the text.

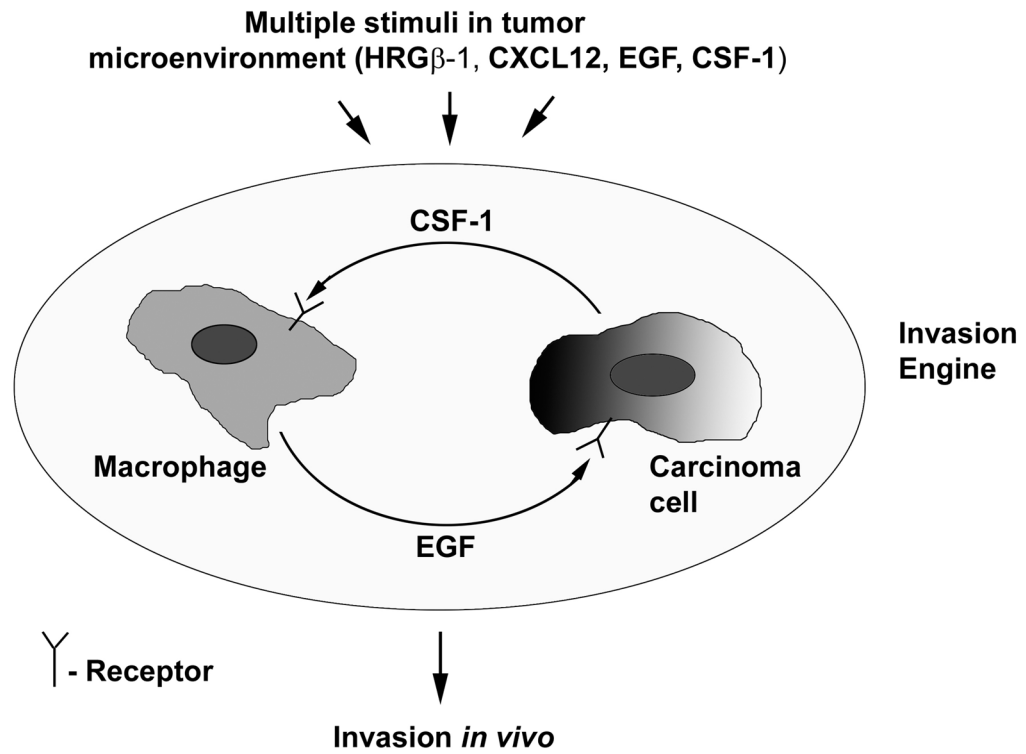


Figure 6. Model for *in vivo* invasion

The primary tumor expresses receptors for a number of chemoattractants, including the EGF receptor. Chemoattractants present in the tumor microenvironment can feed into the EGF/CSF-1 paracrine loop, which then drives invasion *in vivo*.