



THE UNIVERSITY *of* EDINBURGH

Edinburgh Research Explorer

Experimental equilibrium crystal structures: Molecular dynamics as a probe for atomic probability density functions

Citation for published version:

Reilly, AM, Wann, DA, Morrison, CA & Rankin, DWH 2007, 'Experimental equilibrium crystal structures: Molecular dynamics as a probe for atomic probability density functions', *Chemical Physics Letters*, vol. 448, no. 1-3, pp. 61-64. <https://doi.org/10.1016/j.cplett.2007.09.073>

Digital Object Identifier (DOI):

[10.1016/j.cplett.2007.09.073](https://doi.org/10.1016/j.cplett.2007.09.073)

Link:

[Link to publication record in Edinburgh Research Explorer](#)

Document Version:

Peer reviewed version

Published In:

Chemical Physics Letters

Publisher Rights Statement:

Copyright © 2007 Elsevier B.V. All rights reserved.

General rights

Copyright for the publications made accessible via the Edinburgh Research Explorer is retained by the author(s) and / or other copyright owners and it is a condition of accessing these publications that users recognise and abide by the legal requirements associated with these rights.

Take down policy

The University of Edinburgh has made every reasonable effort to ensure that Edinburgh Research Explorer content complies with UK legislation. If you believe that the public display of this file breaches copyright please contact openaccess@ed.ac.uk providing details, and we will remove access to the work immediately and investigate your claim.



This is the peer-reviewed author's version of a work that was accepted for publication in *Chemical Physics Letters*. Changes resulting from the publishing process, such as editing, corrections, structural formatting, and other quality control mechanisms may not be reflected in this document. Changes may have been made to this work since it was submitted for publication. A definitive version is available at: <http://dx.doi.org/10.1016/j.cplett.2007.09.073>

Cite as:

Reilly, A. M., Wann, D. A., Morrison, C. A., & Rankin, D. W. H. (2007). Experimental equilibrium crystal structures: Molecular dynamics as a probe for atomic probability density functions. *Chemical Physics Letters*, 448 (1-3), 61-64.

Manuscript received: 16/08/2008; Accepted: 24/09/2007; Article published: 01/10/2007

Experimental equilibrium crystal structures: Molecular dynamics as a probe for atomic probability density functions**

Anthony M. Reilly,¹ Derek A. Wann,¹ Carole A. Morrison¹ and David W. H. Rankin^{1,*}

^[1]EaStCHEM, School of Chemistry, Joseph Black Building, University of Edinburgh, West Mains Road, Edinburgh, EH9 3JJ, UK.

^[*]Corresponding author; e-mail: d.w.h.rankin@ed.ac.uk

^[**]We thank the Edinburgh Parallel Computing Centre, the NSCCS (<http://www.nscs.ac.uk>) and the EaStCHEM Research Computing Facility (<http://www.eastchem.ac.uk/rcf>), supported by the eDIKT initiative (<http://www.edikt.org>), for computational resources. CAM acknowledges the Royal Society for the award of a University Research Fellowship. We also thank Profs. B. Leimkuhler and G.S. Pawley for useful discussions.

Abstract

Molecular dynamics simulations using plane-wave DFT calculations have been used along with experimental data to determine the equilibrium crystal structure and thermal anisotropic displacements parameters for ND₃.

1. Introduction

Equilibrium structures, corresponding to theoretical vibrationless states at potential-energy minima, are the ultimate goal of structural chemists. Only by reducing structures to this common denominator can geometric parameters obtained from different experimental and theoretical methods be compared directly.

Thermal motion of atoms in crystals, as in gases and liquids, yields vibrationally-averaged structures, which may yield apparently inaccurate geometric parameters. Atoms generally move along curved trajectories, with apparent bond shortening when determined by diffraction. This has long been understood [1] and [2], and attempts have been made to counter these structural inconsistencies, including rigid-body analysis of motions [3] (ignoring significant effects of internal molecular vibrations) and classical molecular dynamics (MD) to simulate thermally-averaged structures [4].

Here we demonstrate that, by using MD simulations of a periodic solid, we can follow atomic motions under the influence of vibrational and lattice modes, thence determining the differences between the time-averaged and equilibrium atomic positions. These, applied to nuclear coordinates obtained by neutron diffraction, yield an experimental equilibrium structure. MD trajectory analysis also permits theoretical estimation of the anisotropic displacement parameters (ADPs) of each atom. These important parameters define the thermal motion of the atoms in the crystal in terms of Gaussian probability ellipsoids [5]. We have applied the method to the phase I crystal structure of ND₃. The high symmetry and small cell size make this an ideal case for exploring the potential of MD to simulate crystal structures. The downside to this test case, however, is the low accuracy of the experimental data, which feature a limited $\sin \theta / \lambda$ range and large ESDs [6]. Nevertheless, we present a method for obtaining experimental equilibrium crystal structures and discuss the limitations of sampling adequate phonon dispersion in this case.

2. Calculations

We have applied plane-wave density-functional theory (PW-DFT) to study the time-averaged structure of phase I ND₃, whose structure had previously been determined by neutron powder diffraction [6]. The cubic (*P*2₁3) crystallographic unit-cell contains four molecules, with $a = 507.3$ pm and $V = 130.55 \times 10^6$ pm³ at 77 K. The experimental bond length is 98.8 pm. Starting from the experimental structure and symmetry, the

theoretical 0 K equilibrium structure was optimised at ambient pressure using the PW-DFT package CASTEP [7]. The electronic core was described using CASTEP's standard ultrasoft pseudopotentials and the PW91 functional was used for both electron exchange and correlation [8]. The plane-wave cut-off energy was 400 eV and a $2 \times 2 \times 2$ Monkhorst-Pack grid was used to sample reciprocal space. During optimisation the unit-cell parameters and atomic positions were alternately optimised until the maximum energy change per atom was less than 5×10^{-7} eV. The optimised cell parameter was 518.46 pm, with r N-D 103.5 pm.

The MD simulations (NVE and NVT ensembles) were run with $P1$ space-group symmetry so that all vibrations were properly represented. The initial temperature of each simulation was chosen to equilibrate at 77 K, the temperature of the original crystallographic experiments. For the NVT ensemble this was facilitated by a Nosé-Hoover chain of five thermostats [9]. Atomic coordinates, velocities and forces were calculated every 0.8 fs for 30 ps for NVE and 50 ps for NVT. As the temperature is stable in most experiments, the NVT ensemble should provide a more realistic picture of the system over time and a more ergodic simulation. The NPT ensemble was not adopted as variable-cell DFT simulations typically require a larger cut-off energy to converge properly. The effect of fixing the cell at its 0 K length is a pressure of approximately 0.1 GPa. Previous studies have suggested that increasing the pressure from ambient to 0.1 GPa results in the lattice modes of ammonia changing by only 5 cm^{-1} [10] and [11]. The effect of the simulation pressure on the vibrational potential-energy surface (PES) is therefore marginal.

Table 1. Fractional coordinates for ND_3

	Equilibrium	MD averaged	Correction	Experimental ^a	Corrected
<i>NVE ensemble – $1 \times 1 \times 1$ cell</i>					
x_{N}	0.1935	0.1974(6)	-0.0039(6)	0.2108(11)	0.2069(13)
x_{D}	0.3460	0.3520(8)	-0.0060(8)	0.3694(6)	0.3634(10)
y_{D}	0.2712	0.2697(6)	0.0015(6)	0.2694(6)	0.2709(8)
z_{D}	0.0910	0.0965(8)	-0.0055(8)	0.1141(11)	0.1086(14)
<i>NVT ensemble – $1 \times 1 \times 1$ cell</i>					
x_{N}	0.1935	0.1974(5)	-0.0039(5)	0.2108(11)	0.2069(12)
x_{D}	0.3460	0.3519(7)	-0.0059(7)	0.3694(6)	0.3635(9)
y_{D}	0.2712	0.2698(5)	0.0016(5)	0.2694(6)	0.2710(8)
z_{D}	0.0910	0.0968(6)	-0.0058(6)	0.1141(11)	0.1083(13)
<i>NVT ensemble – $2 \times 2 \times 2$ cell</i>					
x_{N}	0.1925	0.1969(23)	-0.0044(23)	0.2108(11)	0.2064(25)
x_{D}	0.3471	0.3523(25)	-0.0052(25)	0.3694(6)	0.3642(25)
y_{D}	0.2711	0.2715(27)	-0.0004(25)	0.2694(6)	0.2690(25)
z_{D}	0.0932	0.0989(27)	-0.0057(27)	0.1141(11)	0.1084(29)

[a]Crystal structure at 77 K [6].

Simulating only a $1 \times 1 \times 1$ cell neglects non- Γ -point phonon modes such as acoustic modes. To determine the effects of phonon dispersion on the equilibrium structure an NVT-MD simulation of a $2 \times 2 \times 2$ cell of

ND₃ was performed using the CPMD code. The standard pseudopotentials provided were used at a cut-off energy of 800 eV, with a single k -point and the PBE functional [12]. The geometry was optimised to the same level of convergence as in the $1 \times 1 \times 1$ cell calculations with N-D again 103.5 pm. An NVT Car-Parrinello MD simulation was then performed with a timestep of 0.09 fs. The force, velocity and position of each particle were sampled every 0.9 fs for 15 ps. All MD results are presented in Table 1.

3. Results and discussion

The asymmetric unit of crystalline ND₃ consists of one third of a molecule. The MD trajectory was analysed initially by determining the time-averaged position of each atom in the cell. The values of x_N , y_N and z_N , estimated separately, were averaged to give the single coordinate for nitrogen. The symmetry of the $P2_13$ space-group was used to map each of the time-averaged atomic positions into the asymmetric unit; these were then averaged again to provide the final time-averaged position. The high symmetry of the crystal structure increases our dataset size and, therefore, the accuracy of our average positions. The uncertainties of the time-averaged coordinates were estimated using the central limit theorem [13]; the blocking method [14] was applied to correct for the effects of data correlation.

The differences between time-averaged and equilibrium positions of the N and D atoms, Δx , Δy and Δz , are the corrections to be applied to the experimental structure. Differences between two calculations at the same level of theory should cancel any systematic errors attributable to the theoretical method. Table 1 lists vibrationally-averaged fractional coordinates from the MD simulations, calculated equilibrium coordinates, the correction terms, and the coordinates from the neutron diffraction crystal structure, before and after vibrational correction. The uncertainties of the correction factors are the same as those of the averaged positions, and combine with the experimental uncertainties to give the ESDs of the corrected fractional coordinates. The validity of the DFT PES may be ascertained from the velocity-autocorrelation function of the system, which yields the phonon spectrum by Fourier transformation. This spectrum agrees excellently with experiment [15], and previous constrained MD simulations on NH₃ have also shown the suitability of DFT for modelling thermal motion in ammonia [10]. This Γ -point phonon spectrum does not indicate whether all thermal motions and phonon dispersion have been accurately depicted by the simulations.

As expected, the average deuterium position lies closer to the nitrogen in the vibrationally-averaged structures, for both ensembles, than in the calculated equilibrium structure. The NVE ensemble N-D bond length is 0.41 pm longer in the experimental equilibrium structure than in the experimental time-averaged structure; the NVT ensemble lengthening is 0.54 pm and 0.63 pm from the $1 \times 1 \times 1$ and $2 \times 2 \times 2$ simulations, respectively. The $2 \times 2 \times 2$ simulation yields an experimental equilibrium bond length of 99.4 pm. The ESD of the experimental bond length is 0.9 pm, a relatively large value caused by the limited $\sin \theta / \lambda$

λ range of the experiment; in contrast, the ESDs of the bond lengths for data collected at 2 K and 180 K (with much larger $\sin \theta / \lambda$ ranges) are 0.2 and 0.5 pm. We might expect our bond length correction to be more than the experimental ESD at 77 K, assuming a better $\sin \theta / \lambda$ range, and would be highly significant for a single-crystal structure.

We have calculated the ADPs of the atoms using the MD trajectories. ADPs represent the elements of the symmetric variance-covariance matrix, \mathbf{U} , of atoms and are given by the time-averaged anisotropic mean-squared atomic displacements

$$U_{ij} = \langle \Delta x_i \Delta x_j \rangle \quad (1)$$

where Δx_i represents the displacement of atom i . Table 2 gives the components of \mathbf{U} for the N and D atoms as determined from the MD simulations and the experimental ADPs [6] for the crystal structure at 77 K, showing that the theoretical ADPs are significantly different to the experimental values. The uncertainties of the ADPs were evaluated using the central limit theorem and an estimate of the correlation length of the simulation was obtained from the blocking method applied to the average positions [13]. The resulting ellipsoids (from the $1 \times 1 \times 1$ NVT simulation) are plotted for the corrected experimental structure in Fig. 1.

Table 2. Elements of the variance-covariance matrix (U_{ij}) for the asymmetric unit of ND_3

Component/ \AA^2	NVE	NVT	NVT	Experimental ^a
	$1 \times 1 \times 1$ cell	$1 \times 1 \times 1$ cell	$2 \times 2 \times 2$ cell	
D				
U_{11}	0.0091(7)	0.0101(6)	0.0146(15)	0.0467(36)
U_{22}	0.0076(6)	0.0085(5)	0.0152(16)	0.0407(38)
U_{33}	0.0096(7)	0.0102(6)	0.0161(17)	0.0552(30)
U_{21}	-0.0027(2)	-0.0028(1)	-0.0036(4)	-0.0096(21)
U_{31}	0.0026(2)	0.0039(2)	0.0026(3)	0.0091(34)
U_{32}	-0.0005(1)	-0.0003(1)	-0.0003(1)	-0.0027(24)
N				
U_{ii}	0.0047(4)	0.0048(2)	0.0103(11)	0.0290(22)
U_{ij}	-0.0009(1)	-0.0003(1)	-0.0007(1)	-0.0015(15)

[a]Crystal structure at 77 K [6].

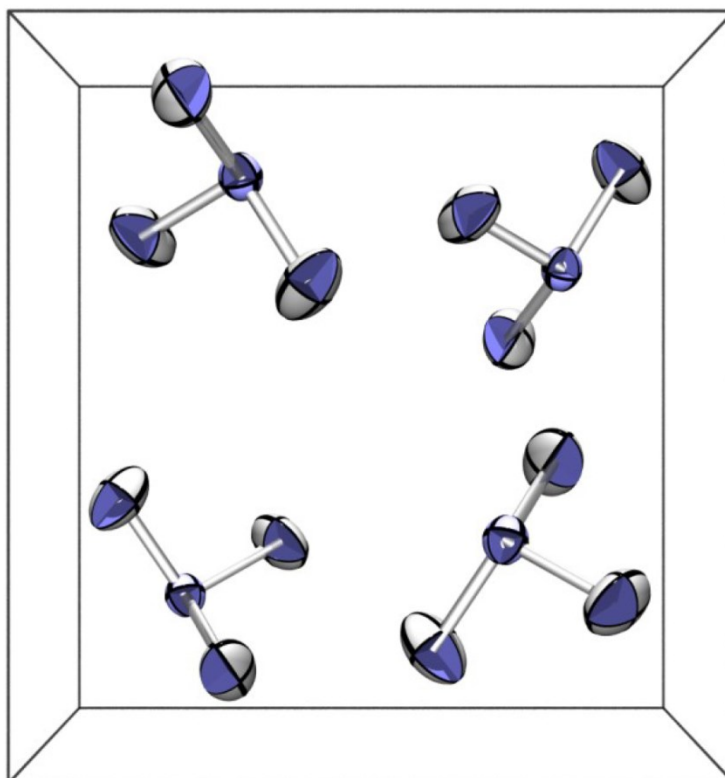


Figure 1. ND_3 unit-cell projection along the c -axis showing calculated probability ellipsoids from the $1 \times 1 \times 1$ simulation. (Produced using ORTEP-3 [16] and POV-ray.)

In the MD simulations only phonon modes commensurate with the $1 \times 1 \times 1$ and $2 \times 2 \times 2$ cells are included. Potentially important low-frequency high-amplitude modes, such as acoustic modes, may thus be neglected. The $2 \times 2 \times 2$ cell simulation allows for some acoustic motion to be included, and the ADPs increase by 50%. Note that such acoustic modes have significant translational character, which, involving rigid translations of the whole molecules, does not affect the vibrational correction terms. Encouragingly, Fig. 1 shows that the ellipsoids obtained using only a single unit cell are reasonable in shape and orientation.

These calculated ADPs yield thermal probability ellipsoids independent of experimental error and crystal disorder, effects that are often hard to evaluate but can be significant for corrections for thermal motion, including rigid-body refinements. Using their ADPs, Hewat and Riekel estimated the corrected (equilibrium) bond length to be 103.9(20) pm [6], with a correction of 5 pm. This is much longer than the MD simulations here suggested but is consistent with their much larger experimental U_{ij} values. Reanalysis of their dataset using a modified structure factor equation designed to incorporate reorientation of the ND_3 molecules about the C_3 cubic axis suggests a much shorter corrected bond length of 100.1(7) pm [17], within one ESD of the corrected bond length obtained from the $2 \times 2 \times 2$ NVT simulation performed here. A previous neutron

study of ND_3 [18] suggested smaller ADPs than those from the later study [6]. Further MD simulations of ammonia would reduce uncertainties about the structure and ADPs of ammonia.

MD simulations allow detailed investigation of the probability density function (PDF), which determines atomic motion in the solid state. Currently this PDF is approximated as a trivariate Gaussian and depicted as a probability ellipsoid using the ADPs. A numerical PDF could be determined and visualised from an MD simulation. This is illustrated for the D atom of asymmetric unit of ND_3 using the $1 \times 1 \times 1$ NVT-MD simulation. The atomic positions have been binned in two dimensions with bins containing fewer than six positions (out of 650 000) being omitted for clarity. The shape of this PDF (shown in Fig. 2) approximates to a trivariate Gaussian function, albeit with some deviations.

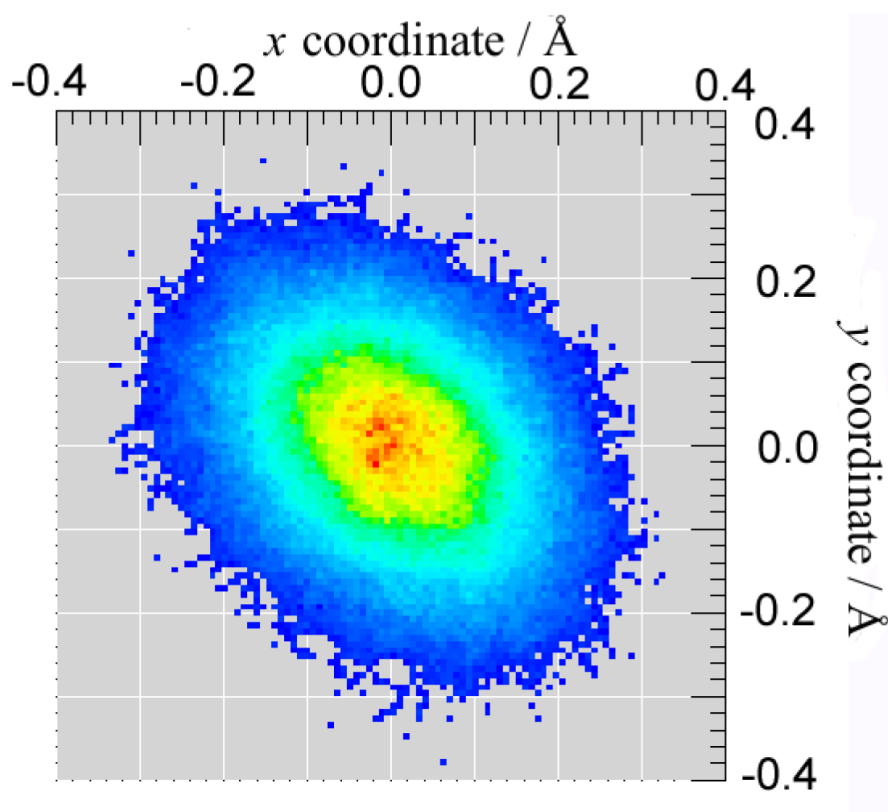


Figure 2. 2-D histogram of the ND_3 D atom positions during the $1 \times 1 \times 1$ simulation. Density increases towards the centre of the ellipsoid. The x and y coordinates are parallel to the a and c lattice vectors. (Produced using OpenDX.)

4. Conclusion

MD simulations of phase I ND_3 using $1 \times 1 \times 1$ and $2 \times 2 \times 2$ cells sampling from the NVE and NVT ensembles illustrate a method for obtaining experimental equilibrium crystal structures. Significant differences are found between the theoretical and experimental ADPs. These may be partly explained by phonon modes neglected by the simulations. However, current experimental data for ammonia are conflicting and have large uncertainties, hindering meaningful comparison of the theoretical and experimental results. Applying MD simulations to determine equilibrium crystal structures is a promising method that allows for detailed analysis of PDFs. Further work will be carried out to provide a conclusive picture of the thermal motion in ammonia to determine ADPs and atomic PDFs independent of systematic error, structural disorder and the assumptions of the form of the atomic PDF.

Notes and references

- [1] D. W. J. Cruickshank, *Acta Crystallogr.* 9 (1956) 757.
- [2] W. R. Busing, H. A. Levy, *Acta Crystallogr.* 17 (1964) 142.
- [3] G. A. Jeffrey, J. R. Ruble, R. K. McMullan, J. A. Pople, *Proc. R. Soc. London, Ser. A*, 414 (1987) 47.
- [4] W. Hummel, A. Raselli, H.-B. Bürgi, *Acta Crystallogr., Sect. B: Struct. Sci.*, 1990, 46, 683
- [5] W. Hummel, J. Hauser and H.-B. Bürgi, *J. Mol. Graphics* 8 (1990) 214.
- [6] G. S. Pawley, *Proc. R. S. E. (A)* 70 (1971/72) 225.
- [7] J. van Eerden, S. Harkema, D. Feil, *Acta Crystallogr, Sect. B: Struct. Sci.*, 1990, 46, 222.
- [8] K. N. Trueblood, H.-B. Bürgi, H. Bunzlaff, J. D. Dunitz, C. M. Gramaccioli, U. Shmueli, S. C. Abrahams, *Acta Crystallogr., Sect. A* 53 (1996) 770.
- [9] A. W. Hewat, C. Riekell, *Acta Crystallogr., Sect. A: Cryst. Phys., Diffr., Theor. Gen. Cryst.* 35 (1979) 569.
- [10] S. J. Clark, M. D. Segall, C. J. Pickard, P. J. Hasnip, M. J. Probert, K. Refson, M. C. Payn, *Z. Kristallogr.* 220 (2005) 567.
- [11] J. P. Perdew, J. A. Chevary, S. H. Vosko, K. A. Jackson, M. R. Pederson, D. J. Singh, C. Fiolhais *Phys. Rev. B* 46 (1992) 6671.
- [12] G. J. Martyna, M. L. Klein, M. Tuckermann, *J. Chem. Phys.* 97 (1992) 2635.
- [13] M. M. Siddick, G. J. Ackland, C. A. Morrison, *J. Chem. Phys.* 125 (2006) 64707.
- [14] C. L. Nye, F. D. Medina, *Phys. Rev. B.* 32 (1985), 2510.
- [15] CPMD, Version 3.11.1, IBM Corp. 1990–2006, MPI für Festkörperforschung, Stuttgart, 1997–2001.
- [16] J. P. Perdew, K. Burke, M. Ernzerhof, *Phys. Rev. Lett.* 77 (1996) 3865.
- [17] M. P. Allen, D. J. Tildesley, *Computer Simulation of Liquids*, Oxford University Press, 1989.
- [18] H. Flyvbjerg, H. G. Petersen, *J. Chem. Phys.* 91 (1989) 461.
- [19] A. M. Reilly, D. S. Middlemiss, M. M. Siddick, D. A. Wann, G. J. Ackland, C. C. Wilson, D. W. H. Rankin, C. A. Morrison, manuscript submitted.
- [20] L. J. Farrugia, *J. Appl. Cryst.*, 30 (1997) 565.

[21] POV-Ray™ for Windows, Version 3.61, Persistence of Vision Raytracer Pty. Ltd. 2003–2006.

[22] F. Leclercq, P. Damay, M. Foukani, *J. Chem. Phys.* 102 (1995) 4400.

[23] J. W. Reed, P. M. Harris, *J. Chem. Phys.* 35 (1961) 1730.

[24] OpenDX, Version 4.4.4, available from www.opendx.org.