



THE UNIVERSITY *of* EDINBURGH

Edinburgh Research Explorer

Recombination

The good, the bad and the variable

Citation for published version:

Stapley, J, Feulner, PGD, Johnston, SE, Santure, AW & Smadja, CM 2017, 'Recombination: The good, the bad and the variable', *Philosophical Transactions of the Royal Society B: Biological Sciences*, vol. 372, no. 1736, 20170279. <https://doi.org/10.1098/rstb.2017.0279>

Digital Object Identifier (DOI):

[10.1098/rstb.2017.0279](https://doi.org/10.1098/rstb.2017.0279)

Link:

[Link to publication record in Edinburgh Research Explorer](#)

Document Version:

Publisher's PDF, also known as Version of record

Published In:

Philosophical Transactions of the Royal Society B: Biological Sciences

General rights

Copyright for the publications made accessible via the Edinburgh Research Explorer is retained by the author(s) and / or other copyright owners and it is a condition of accessing these publications that users recognise and abide by the legal requirements associated with these rights.

Take down policy

The University of Edinburgh has made every reasonable effort to ensure that Edinburgh Research Explorer content complies with UK legislation. If you believe that the public display of this file breaches copyright please contact openaccess@ed.ac.uk providing details, and we will remove access to the work immediately and investigate your claim.



Introduction



Cite this article: Stapley J, Feulner PGD, Johnston SE, Santure AW, Smadja CM. 2017 Recombination: the good, the bad and the variable. *Phil. Trans. R. Soc. B* **372**: 20170279. <http://dx.doi.org/10.1098/rstb.2017.0279>

Accepted: 21 September 2017

One contribution of 13 to a theme issue ‘Evolutionary causes and consequences of recombination rate variation in sexual organisms’.

Subject Areas:

evolution, genomics, genetics, health and disease and epidemiology, plant science, ecology

Keywords:

crossing over, meiosis, genetic linkage, evolution, adaptation, genomics

Author for correspondence:

Jessica Stapley

e-mail: jessica.stapley@env.ethz.ch

Recombination: the good, the bad and the variable

Jessica Stapley¹, Philine G. D. Feulner^{2,3}, Susan E. Johnston⁴, Anna W. Santure⁵ and Carole M. Smadja⁶

¹Centre for Adaptation to a Changing Environment, IBZ, ETH Zürich, Zürich, Switzerland

²Department of Fish Ecology and Evolution, Centre of Ecology, Evolution and Biogeochemistry, EAWAG Swiss Federal Institute of Aquatic Science and Technology, 6047 Kastanienbaum, Switzerland

³Division of Aquatic Ecology and Evolution, Institute of Ecology and Evolution, University of Bern, 3012 Bern, Switzerland

⁴Institute of Evolutionary Biology, University of Edinburgh, Edinburgh EH9 3JY, UK

⁵School of Biological Sciences, University of Auckland, Auckland 1142, New Zealand

⁶Institut des Sciences de l'Évolution UMR 5554, CNRS, IRD, EPHE, Université de Montpellier, 3095 Montpellier cedex 05, France

JS, 0000-0002-9138-5684; PGDF, 0000-0002-8078-1788; SEJ, 0000-0002-5623-8902; AWS, 0000-0001-8965-1042

Recombination, the process by which DNA strands are broken and repaired, producing new combinations of alleles, occurs in nearly all multicellular organisms and has important implications for many evolutionary processes. The effects of recombination can be *good*, as it can facilitate adaptation, but also *bad* when it breaks apart beneficial combinations of alleles, and recombination is highly *variable* between taxa, species, individuals and across the genome. Understanding how and why recombination rate varies is a major challenge in biology. Most theoretical and empirical work has been devoted to understanding the role of recombination in the evolution of sex—comparing between sexual and asexual species or populations. How recombination rate evolves and what impact this has on evolutionary processes within sexually reproducing organisms has received much less attention. This Theme Issue focusses on how and why recombination rate varies in sexual species, and aims to coalesce knowledge of the molecular mechanisms governing recombination with our understanding of the evolutionary processes driving variation in recombination within and between species. By integrating these fields, we can identify important knowledge gaps and areas for future research, and pave the way for a more comprehensive understanding of how and why recombination rate varies.

1. Introduction

Recombination, the exchange of DNA between maternal and paternal chromosomes during meiosis, is a near universal processes occurring in almost all forms of life and is fundamental for DNA repair and meiotic cell division. Recombination is *good* as it can facilitate adaptation through the creation of novel genetic combinations [1,2], but also *bad* as it can break apart favourable combinations of alleles [3], and despite meiosis and recombination being highly regulated, recombination is frequently *variable* across the genome, across taxa, between the sexes, populations and individuals [4]. Although ongoing advances in DNA sequencing technology and methods to estimate recombination from population-based samples are providing much needed empirical evidence of ‘How’ recombination varies, our understanding of ‘Why’ it varies is progressing more slowly.

When considering this question: ‘Why does recombination rate vary?’, there is much focus on the evolutionary advantage of sex, but much less attention given to understanding why recombination varies between sexually reproducing

organisms. For us, as a group of evolutionary biologists who have observed variation in recombination rate in sexually reproducing organisms—we considered this an important knowledge gap. Hence, we proposed this special issue ‘Evolutionary causes and consequences of recombination rate variation in sexual organisms’ with the aim to bring this question to the fore and to encourage more researchers to investigate if and how recombination rate varies, whether it responds to natural or sexual selection, and how it influences fundamental evolutionary processes within sexually reproducing organisms, such as adaptation and speciation.

To understand the evolution of recombination, like any trait, we need information on the heritability and plasticity of the trait, on how the trait influences fitness, and on the molecular mechanisms controlling the trait. In this respect, we know a lot about recombination—recombination is heritable, many populations harbour additive genetic variation for it, and it can respond to selection in the laboratory [4]. Recombination is also modified by a range of environmental stimuli, including temperature [5] and condition [6]. Recombination has well-characterized fitness effects: for example, in humans, altered rates of recombination can cause chromosomal abnormalities, reduced fertility and disease [7]. Enormous progress has been made recently in understanding the genetic elements that control recombination, and these include elements that are highly conserved across eukaryotes (e.g. SPO11), as well as evolutionarily dynamic elements such as PRDM9 [8]. However, unlike other traits that evolutionary biologists commonly study, recombination has some very unusual properties: it can influence the efficacy of selection [9,10], facilitate adaptation to changing environments [1,11], it can alter patterns of nucleotide diversity [8] and influence genetic diversity within populations [12,13]. Thus, variation in recombination can experience direct and indirect selection, and this selection can result from short-term (in the next generation) and long-term (over many generations) benefits.

Addressing the question ‘Why does recombination rate vary?’ necessitates understanding both direct and indirect effects of selection. However, most researchers often do not consider selection operating at these different scales simultaneously. For example, population geneticists often view recombination as a population parameter that is under indirect and long-term selection, whereas developmental biologists consider the direct, short-term effects that an altered rate of recombination has on individual traits like fertility. One goal of this Special Issue is to try to better integrate these different perspectives. Thus, we sought contributions from the ‘population genetics–evolutionary’ perspective [14–16] as well as the ‘developmental–molecular’ perspective [5,7,8], with the hope that this will foster greater communication across these disciplines.

The Special Issue opens with a general review of how and why recombination rate varies across eukaryotes. It includes an analysis of data from the largest collection of linkage maps to date and an overview of the processes that explain variation in recombination rate—from genome architecture to evolutionary explanations. The review introduces many of the concepts and evolutionary theories that are explored in greater depth in the proceeding articles. Although empirical data for recombination are growing rapidly, progress in explaining this variation has been slow. Dapper & Payseur [17] argue that progress in the field is hampered by a disconnect between empirical data and the large body of theory that

has been developed to explain variation in recombination. For example, much theory has been developed to explain the evolutionary advantage of recombination, but this theory does not address quantitative differences among individuals or variation at different genomic scales [17]. Likewise, empirical data are often not collected to directly test current theories and to address this Dapper & Payseur [17] provide a useful table that lists the main hypotheses proposed to explain the evolution of recombination, along with their key requirements and testable predictions relating to each.

Variation in recombination may be explained by variation in the sexual system and the evolutionary consequences of different reproductive modes. For example, selfing and inbreeding species may benefit from high rates of recombination because it can increase genetic diversity and allelic shuffling, and there is some evidence to support this [4]. However, the transition to obligate asexuality may result in suppression of recombination, because asexuals often have modified meiosis and because recombination can erode heterozygosity in asexuals [18]. To investigate how recombination rate varies between sexual and asexual species, Haag *et al.* [18] build a new linkage map for an undescribed species of brine shrimp whose closest relative is an obligate asexual. In their focal sexual species, they report one of the shortest linkage maps known, and propose that the observed low recombination rates in some sexual species may favour sex–asex transitions or, alternatively, may be a consequence of it. The generality of this finding has yet to be tested and Haag *et al.* [18] acknowledge that counter examples in other groups exist. One notable counter example is observed in *Daphnia*, a genus that contains both sexual and asexual parthenogenetic species. In cyclically parthenogenetic species for which linkage maps have been made, we observe a very high recombination rate per megabase compared to other crustaceans [4]. These apparent contradictory results demonstrate that we need more recombination data in a greater ranges of species in order to begin to address long-standing theories on the evolution of recombination.

A notable pattern to emerge from empirical data is the observation that the distribution of recombination events is distinctly non-random across the genome. Variation is observed at many genomic scales: between chromosomes, between megabase regions within chromosomes and across regions spanning only a few kilobases. Between closely related species, there is often more variation in the distribution of recombination events compared to the total frequency of these events, suggesting that the rate at which recombination evolves is likely to depend on the genomic scale [4,17]. Variable rates of recombination between chromosomes have long been recognized, with sex chromosomes representing the most well-known example of this phenomenon as non-recombining sex chromosomes have evolved multiple times across taxa. The repeatability with which sex chromosomes have evolved suppressed recombination makes them excellent models to investigate how selection drives regional suppression of recombination and to identify proximate mechanisms [16]. In her contribution, Charlesworth [16] reviews the proximate and ultimate mechanisms driving suppression of recombination in sex chromosomes and provides recommendations of how to study this in divergent systems that differ in the age of their sex-linked regions.

Estimates of recombination at the fine genomic scale can provide information about how recombination influences or is influenced by genetic elements and neighbouring DNA

sequence. Recombination is often higher in sequence regions with high gene density and GC content and lower in sequence regions that are enriched for simple repeats and transposable elements (TE). Although these patterns are known from a wide range of eukaryotes, the proximate and ultimate mechanisms driving these correlations are poorly understood. To begin to address this problem, Kent *et al.* [19] provide a comprehensive review of how and why recombination rate is correlated with TE density. In their review, they strive to address the problem of 'cause and effect' in this relationship, which is challenging because TE density can be modified by local recombination rate (i.e. TEs accumulate in regions of low recombination), but TEs can also modify the local recombination rate when the host genomes epigenetically silence TEs, and this often results in suppressed recombination [19]. Kent *et al.* [19] propose that the relationship between TEs and recombination may be better understood as 'coevolution', which involves positive feedback between recombination suppression and TE accumulation.

Another commonly observed pattern in sequence data is a positive correlation between recombination rate and nucleotide diversity. This relationship can be driven by the mutagenic effects of recombination [8], but it can also be the result of purifying selection acting on a deleterious mutation, and in doing so reducing genetic diversity at neighbouring, genetically linked loci (a process referred to as background selection (BGS)) [12]. This size of the region that experiences a loss in diversity is determined by the strength of selection (increasing with increasing selection) and the local recombination rate (larger in regions of low recombination). Comeron [12] reviews the concepts behind BGS, and argues that studies that attempt to investigate evidence for selection in the genome using patterns of nucleotide diversity should use a null model that incorporates BGS. With this approach, we can better determine baseline levels of diversity across the genome and identify the regions experiencing different forms of selection [12].

A pervasive pattern to emerge from accumulating fine-scale recombination data is that in many species, recombination is localized to small genomic regions referred to as hotspots. Hotspots are present in a wide range of species, but absent from some well-known model species such as *Caenorhabditis elegans* [20] and *Drosophila* [21]. Progress in understanding the molecular mechanisms controlling hotspot position and activity has fuelled exciting empirical and theoretical work. Tiemann-Boege *et al.* [8] provide a comprehensive review of recombination hotspots and the processes governing double-strand breaks (DSBs), which precede recombination. Repair of DSBs often introduces changes into the sequence—either via mutations or via biased gene conversion, and in many cases, the allele that initiates the DSB (active allele) is converted to an inactive allele—turning hotspots cold [8,15]. One mechanism controlling hotspot activity in several mammals is PRDM9, a zinc-finger binding protein that recognizes and binds to sequence motifs, initiating a DSB. Investigation of this *trans*-acting factor has provided a great deal of insight into how and why hotspot activity varies between species [22]. The rapid turnover of hotspots controlled by PRDM9 can also drive reproductive isolation between mouse strains [8] and PRDM9 was originally described as a speciation gene [7]. The self-destructive nature of PRDM9-directed hotspots creates rapid evolutionary dynamics—when an active allele is converted to an inactive allele and recombination rate declines, selection will favour new PRDM9 alleles in order to restore the optimal level of recombination for the species [15].

To model these rapid dynamics, Latrille *et al.* [15] develop a population-genetic Red Queen model, explore the behaviour of their model over a range of conditions via simulations, and finally support their model with analytical and numerical approximations [15]. Importantly, their analyses demonstrate that for low-scaled mutation rates (i.e. the mutation rate multiplied by the effective population size), there tends to be only one PRDM9 allele that dominates, which is then replaced through hard sweeps as the recombination targets in the genome are eroded. By contrast, at higher scaled mutation rates, a population of PRDM9 alleles can exist, each binding unique motifs in the genome [15].

Variation in recombination is not solely due to genetic factors: a multitude of environmental factors both extrinsic and intrinsic have been found to alter recombination frequency and distribution. Experimental work in *Drosophila melanogaster* has been instrumental in the development of this field and Stevison *et al.* [6] review this body of work and explore the possible molecular mechanisms governing plasticity. The authors also reflect on the lessons learnt and provide recommendations for future empirical research, which they successfully implement in a related species *D. pseudoobscura* as a proof of concept and to provide new data in less characterized species [6]. Alves *et al.* [7] explore the vulnerabilities of human meiosis, one of which is maternal age, an intrinsic factor that is often associated with a greater frequency of chromosomal abnormalities and altered recombination. One hypothesis proposed to explain increased aneuploidy in older females is that recombination frequency or distribution changes with age; however, Alves and coauthors argue that this is unlikely because the effects of maternal age on recombination are not consistent or strong enough to drive the patterns of aneuploidy observed [7].

While there are many environmental cues known to influence recombination, temperature and condition are perhaps the most well known. Morgan *et al.* [5] provide a comprehensive review of how temperature can influence meiosis and thus recombination through changes in the axes, which unite sister chromatids, and the synaptonemal complex, the protein structure that forms between these chromatids during meiosis. As proteins responsible for the formation of those structures during meiosis are in general (across eukaryotes) prone to aggregation and hence are particularly temperature-sensitive, this could explain why temperature often has a relatively consistent effect on recombination across taxa [5]. The second important environmental cue to influence recombination is condition. An organism in poor condition or in a poor environment may benefit from shuffling its genome, as its haplotype is poorly matched to the current environment, and there is some empirical evidence to support this [14]. Previous theoretical work suggests that condition-dependent recombination seems to emerge most readily in models of haploid rather than diploid selection, and that recombination rate plasticity is unlikely unless, for example, maternal effects are assumed. Rybnikov *et al.* [14] construct a simulation model to test the emergence of condition-dependent recombination rate. Their model demonstrates that in the case where recombination rates *within* a group of selected loci are determined by an unlinked locus, alleles at the locus conferring condition-dependent recombination can readily invade a population with a fixed recombination rate. These modelling results agree with theoretical studies that indicate that in diploids, direct effects—where the locus determining recombination influences recombination *between*

itself and the group of selected loci—are unlikely to lead to plasticity in recombination rate. Interestingly, the simulations in the paper also demonstrate that plasticity in recombination rate requires that the population spends relatively equal time in different selective environments—if the majority of time is spent in a single environment, a single, fixed rate of recombination is favoured [4].

In conclusion, in spite of exciting recent results, understanding how and why recombination rate varies across the genome and across taxa remains a major challenge in biology. For this reason, we present a series of contributions that critically evaluate theoretical and empirical developments on variation in recombination rate between taxa [4,17,18] and across the genome [7,8,12,16,19], and outline some tentative explanations, both mechanistic [5] and evolutionary [6,14,15], for this variation. This Special Issue includes work from scholars who differ in their perspective, but whose approaches and study systems are complementary. Such

integration has not been attempted before and it is our hope that this theme issue will contribute to a comprehensive conceptual framework that will inspire a wider range of theoretical and empirical tests for the evolution of recombination rate—covering the *good*, the *bad* and the *variable*.

Data accessibility. This article has no additional data.

Competing interests. We declare we have no competing interests.

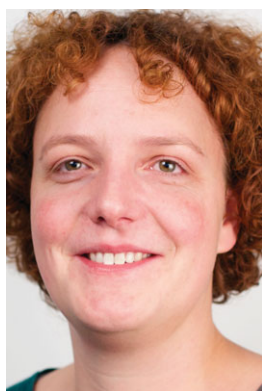
Funding. J.S. is supported by a fellowship from ACE, ETH Zürich. P.G.D.F. is supported by funding from the Swiss National Science Foundation (SNSF proposal numbers 31003A_163446 and 310030E-160812). C.M.S. acknowledges support from the Agence Nationale pour la Recherche and the CNRS, France. S.E.J. is supported by a Royal Society University Research Fellowship.

Acknowledgements. We would like to thank Roger Butlin for suggesting we prepare this Theme Issue and greatly appreciate all Helen Eaton's help in preparing the issue. We thank the authors for their great contributions and all of the reviewers for providing valuable and timely feedback.

Authors' profiles



Jessica Stapley is a research fellow at ETH Zürich in Switzerland. She is an evolutionary biologist, currently studying how genome structure and organization influence evolutionary processes and adaptation. She was awarded a PhD from the Australian National University in 2004, and has undertaken postdoctoral fellowships in South Africa, Panama and the UK. Her research integrates experimental, genetic and genomic tools in a wide range of study systems, including lizards, birds and plants. She has had a long-standing interest in how and why recombination varies across species and across the genome and how this can influence evolutionary processes, adaptation and speciation.



Philine Feulner obtained her PhD in evolutionary biology from the University of Potsdam, Germany, followed by postdoctoral fellowships at the University of Sheffield, UK, University of Münster, Germany, and the Max Planck Institute for Evolutionary Biology in Plön, Germany. She is currently a group leader for Fish Genomics at EAWAG, the Swiss Federal Institute of Aquatic Science and Technology, Switzerland. Philine's research is centred around understanding processes and factors creating and shaping genomic variation and divergence, including recombination. Philine mainly studies fish genome evolution with the aim to link genomic changes to diversity and differentiation at the organismal level.



Susan Johnston is a Royal Society University research fellow at the University of Edinburgh, UK. She completed a PhD in evolutionary genetics at the University of Sheffield, UK, and held postdoctoral positions at the University of Turku, Finland, and the University of Edinburgh. Her research uses genomic approaches to understand the genetic basis of evolutionary trade-offs in natural populations. Most recently, she has been interested in understanding the evolution of individual recombination rates in wild mammals and birds, and investigating how recombination rates and landscapes evolve under domestication.



Anna Santure completed a PhD in quantitative genetics at the University of Otago, New Zealand, and postdoctoral fellowships at the Institute of Zoology, Zoological Society of London, and at the University of Sheffield, UK. She is currently a senior lecturer in the School of Biological Sciences, University of Auckland, New Zealand. Anna's current research uses large-scale genomic tools to determine the genetic basis of traits in wild populations, with the aim to understand how these populations will respond to future selection pressures including climate change. She is currently exploring sex, age and individual differences in recombination rates across a number of species. Anna is also very interested in using genomic information to estimate relatedness between individuals, reconstruct pedigrees and assess population differentiation.



Carole Smadja completed a PhD in evolutionary biology at the University of Montpellier, France, and postdoctoral fellowships at the University of Sheffield and Imperial College London, UK. She is currently a CNRS research scientist at the Institute for Evolutionary Biology, Montpellier, France. Carole's current research addresses the mechanisms of speciation and adaptation, with a special focus on the factors favouring divergence in the presence of gene flow and the genomics of reproductive isolation. Her current projects in the house mouse and in the pea aphid tackle the role of sequence, expression and structural divergence at candidate multi-gene families in speciation and the influence of recombination rate variation in shaping patterns of genomic differentiation.

References

- Rice WR. 2002 Experimental tests of the adaptive significance of sexual recombination. *Nat. Rev. Genet.* **3**, 241–251. (doi:10.1038/nrg760)
- Felsenstein J. 1974 The evolutionary advantage of recombination. *Genetics* **78**, 737–756.
- Charlesworth B, Barton NH. 1996 Recombination load associated with selection for increased recombination. *Genet. Res.* **67**, 27–41. (doi:10.1017/S0016672300033450)
- Stapley J, Feulner PGD, Johnston SE, Santure AW, Smadja CM. 2017 Variation in recombination frequency and distribution across eukaryotes: patterns and processes. *Phil. Trans. R. Soc. B* **372**, 20160455. (doi:10.1098/rstb.2016.0455)
- Morgan CH, Zhang H, Bomblies K. 2017 Are the effects of elevated temperature on meiotic recombination and thermotolerance linked via the axis and synaptonemal complex? *Phil. Trans. R. Soc. B* **372**, 20160470. (doi:10.1098/rstb.2016.0470)
- Stevison L, Sefick S, Rushton C, Graze R. 2017 Recombination rate plasticity: revealing mechanisms by design. *Phil. Trans. R. Soc. B* **372**, 20160459. (doi:10.1098/rstb.2016.0459)
- Alves I, Houle AA, Hussin JG, Awadalla P. 2017 The impact of recombination on human mutation load and disease. *Phil. Trans. R. Soc. B* **372**, 20160465. (doi:10.1098/rstb.2016.0465)
- Tiemann-Boege I, Schwarz T, Striedner Y, Heissl A. 2017 The consequences of sequence erosion in the evolution of recombination hotspots. *Phil. Trans. R. Soc. B* **372**, 20160462. (doi:10.1098/rstb.2016.0462)
- Otto SP, Lenormand T. 2002 Resolving the paradox of sex and recombination. *Nat. Rev. Genet.* **3**, 252–261. (doi:10.1038/nrg761)
- Hill WG, Robertson A. 1966 The effect of linkage on limits to artificial selection. *Genet. Res.* **8**, 269–294. (doi:10.1017/S0016672300010156)
- Charlesworth B. 1976 Recombination modification in a fluctuating environment. *Genetics* **83**, 181–195.
- Cameron JM. 2017 Background selection as null hypothesis in population genomics: insights and challenges from *Drosophila* studies. *Phil. Trans. R. Soc. B* **372**, 20160471. (doi:10.1098/rstb.2016.0471)
- Ellegren H, Galtier N. 2016 Determinants of genetic diversity. *Nat. Rev. Genet.* **17**, 422–433. (doi:10.1038/nrg.2016.58)
- Rybnikov SR, Frenkel ZM, Korol AB. 2017 What drives the evolution of condition-dependent recombination in diploids? Some insights from simulation modelling. *Phil. Trans. R. Soc. B* **372**, 20160460. (doi:10.1098/rstb.2016.0460)
- Latrille T, Duret L, Lartillot N. 2017 The Red Queen model of recombination hot-spot evolution: a theoretical investigation. *Phil. Trans. R. Soc. B* **372**, 20160463. (doi:10.1098/rstb.2016.0463)
- Charlesworth D. 2017 Evolution of recombination rates between sex chromosomes. *Phil. Trans. R. Soc. B* **372**, 20160456. (doi:10.1098/rstb.2016.0456)
- Dapper AL, Payseur BA. 2017 Connecting theory and data in recombination rate evolution. *Phil. Trans. R. Soc. B* **372**, 20160469. (doi:10.1098/rstb.2016.0469)
- Haag CR, Theodosiou L, Zahab R, Lenormand T. 2017 Low recombination rates in sexual species and sex–asex transitions. *Phil. Trans. R. Soc. B* **372**, 20160461. (doi:10.1098/rstb.2016.0461)
- Kent TV, Uzunović J, Wright SI. 2017 Coevolution between transposable elements and recombination. *Phil. Trans. R. Soc. B* **372**, 20160458. (doi:10.1098/rstb.2016.0458)
- Rockman MV, Kruglyak L. 2009 Recombinational landscape and population genomics of *Caenorhabditis elegans*. *PLoS Genet.* **5**, e1000419. (doi:10.1371/journal.pgen.1000419)
- Cameron JM, Ratnapan R, Bailin S. 2012 The many landscapes of recombination in *Drosophila melanogaster*. *PLoS Genet.* **8**, e1002905. (doi:10.1371/journal.pgen.1002905)
- Baker Z, Schumer M, Haba Y, Bashkirova L, Holland C, Rosenthal GG, Przeworski, M. 2017 Repeated losses of PRDM9-directed recombination despite the conservation of PRDM9 across vertebrates. *eLife* **6**, e24133. (doi:10.7554/eLife.24133)