



THE UNIVERSITY *of* EDINBURGH

Edinburgh Research Explorer

Determinants of cognitive performance and decline in 20 diverse ethno-regional groups

A COSMIC collaboration cohort study

Citation for published version:

Cohort Studies of Memory in an International Consortium (COSMIC), Lipnicki, DM, Makkar, SR, Crawford, JD, Thalamuthu, A, Kochan, NA, Lima-Costa, MF, Castro-Costa, E, Ferri, CP, Brayne, C, Stephan, B, Llibre-Rodriguez, JJ, Llibre-Guerra, JJ, Valhuerdi-Cepero, AJ, Lipton, RB, Katz, MJ, Derby, CA, Ritchie, K, Ancelin, M-L, Carrière, I, Scarmeas, N, Yannakoulia, M, Hadjigeorgiou, GM, Lam, L, Chan, W, Fung, A, Guaita, A, Vaccaro, R, Davin, A, Kim, KW, Han, JW, Suh, SW, Riedel-Heller, SG, Roehr, S, Pabst, A, van Boxtel, M, Köhler, S, Deckers, K, Ganguli, M, Jacobsen, EP, Hughes, TF, Anstey, KJ, Cherbuin, N, Haan, MN, Aiello, AE, Dang, K, Kumagai, S, Chen, T, Narazaki, K, Ng, TP & Gao, Q 2019, 'Determinants of cognitive performance and decline in 20 diverse ethno-regional groups: A COSMIC collaboration cohort study', *PLoS Medicine*, vol. 16, no. 7, e1002853. <https://doi.org/10.1371/journal.pmed.1002853>

Digital Object Identifier (DOI):

[10.1371/journal.pmed.1002853](https://doi.org/10.1371/journal.pmed.1002853)

Link:

[Link to publication record in Edinburgh Research Explorer](#)

Document Version:

Publisher's PDF, also known as Version of record

Published In:

PLoS Medicine

General rights

Copyright for the publications made accessible via the Edinburgh Research Explorer is retained by the author(s) and / or other copyright owners and it is a condition of accessing these publications that users recognise and abide by the legal requirements associated with these rights.

Take down policy

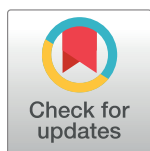
The University of Edinburgh has made every reasonable effort to ensure that Edinburgh Research Explorer content complies with UK legislation. If you believe that the public display of this file breaches copyright please contact openaccess@ed.ac.uk providing details, and we will remove access to the work immediately and investigate your claim.



RESEARCH ARTICLE

Determinants of cognitive performance and decline in 20 diverse ethno-regional groups: A COSMIC collaboration cohort study

Darren M. Lipnicki^{1*}, Steve R. Makkar¹, John D. Crawford¹, Anbupalam Thalamuthu¹, Nicole A. Kochan¹, Maria Fernanda Lima-Costa², Erico Castro-Costa², Cleusa Pinheiro Ferri³, Carol Brayne⁴, Blossom Stephan⁵, Juan J. Llibre-Rodriguez⁶, Jorge J. Llibre-Guerra^{7,8}, Adolfo J. Valhuerdi-Cepero⁹, Richard B. Lipton^{10,11,12}, Mindy J. Katz¹⁰, Carol A. Derby^{10,11}, Karen Ritchie^{13,14,15}, Marie-Laure Ancelin^{13,14}, Isabelle Carrière^{13,14}, Nikolaos Scarmeas^{16,17}, Mary Yannakoulia¹⁸, Georgios M. Hadjigeorgiou^{19,20}, Linda Lam²¹, Wai-chi Chan²², Ada Fung²³, Antonio Guaita²⁴, Roberta Vaccaro²⁴, Annalisa Davin²⁴, Ki Woong Kim^{25,26,27}, Ji Won Han²⁵, Seung Wan Suh²⁵, Steffi G. Riedel-Heller²⁸, Susanne Roehr²⁸, Alexander Pabst²⁸, Martin van Boxtel²⁹, Sebastian Köhler²⁹, Kay Deckers²⁹, Mary Ganguli^{30,31,32}, Erin P. Jacobsen³⁰, Tiffany F. Hughes³³, Kaarin J. Anstey^{34,35,36}, Nicolas Cherbuin³⁶, Mary N. Haan³⁷, Allison E. Aiello^{38,39}, Kristina Dang³⁷, Shuzo Kumagai⁴⁰, Tao Chen⁴⁰, Kenji Narazaki⁴¹, Tze Pin Ng⁴², Qi Gao⁴², Ma Shwe Zin Nyunt⁴³, Marcia Sczufca⁴⁴, Henry Brodaty^{1,45}, Katya Numbers¹, Julian N. Trollor^{1,46}, Kenichi Meguro⁴⁷, Satoshi Yamaguchi⁴⁷, Hiroshi Ishii⁴⁷, Antonio Lobo^{48,49,50}, Raul Lopez-Anton^{49,50,51}, Javier Santabábara^{49,50,52}, Yvonne Leung¹, Jessica W. Lo¹, Gordana Popovic^{1,53}, Perminder S. Sachdev^{1,45*}, for Cohort Studies of Memory in an International Consortium (COSMIC)[†]



OPEN ACCESS

Citation: Lipnicki DM, Makkar SR, Crawford JD, Thalamuthu A, Kochan NA, Lima-Costa MF, et al. (2019) Determinants of cognitive performance and decline in 20 diverse ethno-regional groups: A COSMIC collaboration cohort study. *PLoS Med* 16 (7): e1002853. <https://doi.org/10.1371/journal.pmed.1002853>

Academic Editor: Alexander C. Tsai, Massachusetts General Hospital, UNITED STATES

Received: February 26, 2019

Accepted: June 14, 2019

Published: July 23, 2019

Copyright: © 2019 Lipnicki et al. This is an open access article distributed under the terms of the [Creative Commons Attribution License](https://creativecommons.org/licenses/by/4.0/), which permits unrestricted use, distribution, and reproduction in any medium, provided the original author and source are credited.

Data Availability Statement: Data were provided by the contributing studies to COSMIC on the understanding and proviso that the relevant study leaders be contacted for further use of their data and additional formal data sharing agreements be made. Researchers can apply to use COSMIC data by completing a COSMIC Research Proposal Form available from <https://cheba.unsw.edu.au/consortia/cosmic/research-proposals>

1 Centre for Healthy Brain Ageing, University of New South Wales, Sydney, New South Wales, Australia, **2** Instituto René Rachou, Fundação Oswaldo Cruz, Rio de Janeiro, Brazil, **3** Departamento de Psiquiatria, Universidade Federal de São Paulo, São Paulo, Brazil, **4** Department of Public Health and Primary Care, Cambridge University, Cambridge, United Kingdom, **5** Institute of Health and Society, Newcastle University, Newcastle upon Tyne, United Kingdom, **6** Finlay-Albarrán Faculty of Medical Sciences, Medical University of Havana, Havana, Cuba, **7** Institute of Neurology and Neurosurgery, Havana, Cuba, **8** Memory and Aging Center, University of California, San Francisco, San Francisco, California, United States of America, **9** Medical University of Matanzas, Matanzas, Cuba, **10** Saul R. Korey Department of Neurology, Albert Einstein College of Medicine, Yeshiva University, New York, New York, United States of America, **11** Department of Epidemiology and Population Health, Albert Einstein College of Medicine, Yeshiva University, New York, New York, United States of America, **12** Department of Psychiatry and Behavioral Medicine, Albert Einstein College of Medicine, Yeshiva University, New York, New York, United States of America, **13** Inserm, U1061 Neuropsychiatry: Epidemiological and Clinical Research, La Colombière Hospital, Montpellier, France, **14** Université de Montpellier, Montpellier, France, **15** Centre for Clinical Brain Sciences, University of Edinburgh, Edinburgh, United Kingdom, **16** 1st Department of Neurology, Aiginition Hospital, Medical School, National and Kapodistrian University of Athens, Athens, Greece, **17** Taub Institute for Research on Alzheimer's Disease and the Aging Brain, Gertrude H. Sergievsky Center, Department of Neurology, Columbia University, New York, New York, United States of America, **18** Department of Nutrition and Dietetics, Harokopio University, Athens, Greece, **19** University of Thessaly, Larissa, Greece, **20** Department of Neurology, Medical School, University of Cyprus, Nicosia, Cyprus, **21** Department of Psychiatry, Chinese University of Hong Kong, Hong Kong SAR, China, **22** Department of Psychiatry, University of Hong Kong, Hong Kong SAR, China, **23** Department of Applied Social Sciences, Hong Kong Polytechnic University, Hong Kong SAR, China, **24** Golgi Cenci Foundation, Milan, Italy, **25** Department of Neuropsychiatry, Seoul National University Bundang Hospital, Seongnam, Korea, **26** Department of Psychiatry, College of Medicine, Seoul National University, Seoul, Korea, **27** Department of Brain and Cognitive Science, College of Natural Sciences, Seoul National University, Seoul, Korea, **28** Institute of Social Medicine, Occupational Health and Public Health, Medical Faculty, University of Leipzig, Leipzig, Germany, **29** Department of Psychiatry and Neuropsychology, School for Mental Health and Neuroscience, Maastricht University Medical Center, Maastricht, The Netherlands, **30** Department of Psychiatry, School of Medicine, University of Pittsburgh, Pittsburgh, Pennsylvania, United States of America, **31** Department of Neurology, School of Medicine, University of Pittsburgh, Pittsburgh, Pennsylvania, United States of America, **32** Department of Epidemiology, Graduate School of Public Health, University of Pittsburgh, Pittsburgh,

Funding: Funding for COSMIC comes from a National Health and Medical Research Council of Australia Program Grant (ID 1093083) (PSS, HB), the National Institute On Aging of the National Institutes of Health under Award Number RF1AG057531 (PSS, MG, RBL, KR, KWK, HB), and philanthropic contributions to The Dementia Momentum Fund (UNSW Project ID PS38235) (PSS, HB). Funding for each of the contributing studies is as follows: The Brazilian Ministry of Health (Department of Science and Technology), the Brazilian Ministry of Science and Technology (National Fund for Scientific and Technological Development, Funding of Studies, Brazilian National Research Council) and the Minas Gerais State Research Foundation (MFLC, ECC); Major awards from the Medical Research Council and the Department of Health, UK (CB); The Wellcome Trust Foundation (GR066133 and GR08002) and the Cuban Ministry of Public Health (JLLR); Supported in part by National Institutes of Health grants NIA 2 P01 AG03949, the Leonard and Sylvia Marx Foundation, and the Czup Foundation (RBL, MJK); Novartis (KR, MLA); IIRG-09133014 from the Alzheimer's Association; 189 10276/8/9/2011 from the ESPA-EU program Excellence Grant (ARISTEIA), which is co-funded by the European Social Fund and Greek National resources, and ΔΥ2β/οικ.51657/14.4.2009 from the Ministry for Health and Social Solidarity (Greece) (NS); The Mei Family Trust (LL); Financed with own funds and supported in part by "Federazione Alzheimer Italia", Milan, Italy (AG); The Korean Health Technology R&D Project, Ministry of Health and Welfare, Republic of Korea [Grant No. HI09C1379 (A092077)] (KWK); The Interdisciplinary Centre for Clinical Research at the University of Leipzig (Interdisziplinäres Zentrum für Klinische Forschung/IZKF; grant 01KS9504) (SGRH); Grant # R01AG07562 from the National Institute on Aging, National Institutes of Health, United States Department of Health and Human Services (MG); National Health and Medical Research Council of Australia grants 973302, 179805, 157125 and 1002160 (KA); NIH grants AG12975, T32 AG049663, ES023451 (MNH); Carolina Population Center (CPC) Funding: CPC Center grant (the P2C Center grant from NIH): P2C HD050924. CPC NICHD-NRSA Population Research Training (the T32 Training grant from NIH): T32 HD007168, Biosocial Training Grant: T32 HD091058 (AEA); JSPS KAKENHI Grant Number JP17K09146 (SK); Agency for Science Technology and Research (A*STAR) Biomedical Research Council (BMRC) [Grants: 03/1/21/17/214 and 08/1/21/19/567] and the National Medical Research Council [Grant: NMRC/1108/2007] (TPN); The Wellcome Trust

Pennsylvania, United States of America, **33** Department of Sociology, Anthropology, and Gerontology, Youngstown State University, Youngstown, Ohio, United States of America, **34** School of Psychology, University of New South Wales, Sydney, New South Wales, Australia, **35** Neuroscience Research Australia, Sydney, New South Wales, Australia, **36** Centre for Research on Ageing, Health and Wellbeing, Australian National University, Canberra, Australian Capital Territory, Australia, **37** Department of Epidemiology and Biostatistics, School of Medicine, University of California, San Francisco, San Francisco, California, United States of America, **38** Department of Epidemiology, Gillings School of Global Public Health, University of North Carolina at Chapel Hill, Chapel Hill, North Carolina, United States of America, **39** Carolina Population Center, University of North Carolina at Chapel Hill, Chapel Hill, North Carolina, United States of America, **40** Center for Health Science and Counseling, Kyushu University, Kasuga, Japan, **41** Faculty of Socio-Environmental Studies, Fukuoka Institute of Technology, Fukuoka, Japan, **42** Gerontology Research Programme, Department of Psychological Medicine, Yong Loo Lin School of Medicine, National University of Singapore, Singapore, **43** Department of Psychological Medicine, Yong Loo Lin School of Medicine, National University of Singapore, Singapore, **44** Instituto de Psiquiatria e LIM-23, Hospital da Clínicas, Faculdade de Medicina, Universidade de São Paulo, São Paulo, Brazil, **45** Dementia Collaborative Research Centre, University of New South Wales, Sydney, New South Wales, Australia, **46** Department of Developmental Disability Neuropsychiatry, School of Psychiatry, University of New South Wales, Sydney, New South Wales, Australia, **47** Geriatric Behavioral Neurology, Tohoku University, Sendai, Japan, **48** Department of Medicine and Psychiatry, Universidad de Zaragoza, Zaragoza, Spain, **49** Instituto de Investigación Sanitaria Aragón, Zaragoza, Spain, **50** Centro de Investigación Biomédica en Red de Salud Mental, Ministry of Science and Innovation, Madrid, Spain, **51** Department of Psychology and Sociology, Universidad de Zaragoza, Zaragoza, Spain, **52** Department of Microbiology, Preventive Medicine and Public Health, Universidad de Zaragoza, Zaragoza, Spain, **53** School of Mathematics and Statistics, University of New South Wales, Sydney, New South Wales, Australia

¶ Authors' and other collaborators' associations with COSMIC are provided in the Acknowledgments * d.lipnicki@unsw.edu.au (DML); p.sachdev@unsw.edu.au (PSS)

Abstract

Background

With no effective treatments for cognitive decline or dementia, improving the evidence base for modifiable risk factors is a research priority. This study investigated associations between risk factors and late-life cognitive decline on a global scale, including comparisons between ethno-regional groups.

Methods and findings

We harmonized longitudinal data from 20 population-based cohorts from 15 countries over 5 continents, including 48,522 individuals (58.4% women) aged 54–105 (mean = 72.7) years and without dementia at baseline. Studies had 2–15 years of follow-up. The risk factors investigated were age, sex, education, alcohol consumption, anxiety, apolipoprotein E ε4 allele (*APOE*4*) status, atrial fibrillation, blood pressure and pulse pressure, body mass index, cardiovascular disease, depression, diabetes, self-rated health, high cholesterol, hypertension, peripheral vascular disease, physical activity, smoking, and history of stroke. Associations with risk factors were determined for a global cognitive composite outcome (memory, language, processing speed, and executive functioning tests) and Mini-Mental State Examination score. Individual participant data meta-analyses of multivariable linear mixed model results pooled across cohorts revealed that for at least 1 cognitive outcome, age ($B = -0.1$, $SE = 0.01$), *APOE*4* carriage ($B = -0.31$, $SE = 0.11$), depression ($B = -0.11$, $SE = 0.06$), diabetes ($B = -0.23$, $SE = 0.10$), current smoking ($B = -0.20$, $SE = 0.08$), and history of stroke ($B = -0.22$, $SE = 0.09$) were independently associated with poorer cognitive

Foundation and FAPESP, São Paulo, Brazil (MS); National Health & Medical Research Council of Australia Program Grant (ID 350833) (PSS, HB); Supported by grants from the Fondo de Investigación Sanitaria, Instituto de Salud Carlos III, Spanish Ministry of Economy and Competitiveness, Madrid, Spain (grants 94/1562, 97/1321E, 98/0103, 01/0255, 03/0815, 06/0617, G03/128), and the Fondo Europeo de Desarrollo Regional (FEDER) of the European Union and Gobierno de Aragón, Group #19 (AL). The funders had no role in study design, data collection and analysis, decision to publish, or preparation of the manuscript. The content is solely the responsibility of the authors and does not necessarily represent the official views of the National Institutes of Health or other funders.

Competing interests: I have read the journal's policy and the authors of this manuscript have the following competing interests: AEA is a consultant for Kinsa Inc. and has received an unrestricted gift from Gojo Inc. CB is a member of the Editorial Board of PLOS Medicine. HB is on the Advisory Board of Nutricia Australia. MG was on Biogen Inc's "Patient Journey Advisory Group" in 2016 and 2017. NS reports personal fees from Merck Consumer Health and the NIH outside the submitted work. RBL is the Edwin S. Lowe Professor of Neurology at the Albert Einstein College of Medicine in New York. He receives research support from the NIH: 2P01 AG003949 (mPI), 5U10 NS077308 (PI), R01 NS082432 (Investigator), 1RF1 AG057531 (Site PI), RF1 AG054548 (Investigator), 1R01 AG048642 (Investigator), R56 AG057548 (Investigator), K23 NS09610 (Mentor), K23AG049466 (Mentor), 1K01AG054700 (Mentor). He also receives support from the Migraine Research Foundation and the National Headache Foundation. He serves on the editorial board of Neurology, senior advisor to Headache, and associate editor to Cephalalgia. He has reviewed for the NIA and NINDS, holds stock options in eNeura Therapeutics and Biohaven Holdings; serves as consultant, advisory board member, or has received honoraria from: American Academy of Neurology, Alder, Allergan, American Headache Society, Amgen, Autonomic Technologies, Avanir, Biohaven, Biovision, Boston Scientific, Dr. Reddy's, Electrocore, Eli Lilly, eNeura Therapeutics, GlaxoSmithKline, Merck, Pernix, Pfizer, Supernus, Teva, Trigemina, Vector, Vedanta. He receives royalties from Wolff's Headache 7th and 8th Edition, Oxford Press University, 2009, Wiley and Informa. PSS received grant funding from the NIH/NIA (USA) and the NHMRC (Australia), as well as philanthropic funding through The Dementia Momentum. He is on the

performance ($p < 0.05$ for all), and higher levels of education ($B = 0.12$, $SE = 0.02$) and vigorous physical activity ($B = 0.17$, $SE = 0.06$) were associated with better performance ($p < 0.01$ for both). Age ($B = -0.07$, $SE = 0.01$), *APOE*4* carriage ($B = -0.41$, $SE = 0.18$), and diabetes ($B = -0.18$, $SE = 0.10$) were independently associated with faster cognitive decline ($p < 0.05$ for all). Different effects between Asian people and white people included stronger associations for Asian people between ever smoking and poorer cognition (group by risk factor interaction: $B = -0.24$, $SE = 0.12$), and between diabetes and cognitive decline ($B = -0.66$, $SE = 0.27$; $p < 0.05$ for both). Limitations of our study include a loss or distortion of risk factor data with harmonization, and not investigating factors at midlife.

Conclusions

These results suggest that education, smoking, physical activity, diabetes, and stroke are all modifiable factors associated with cognitive decline. If these factors are determined to be causal, controlling them could minimize worldwide levels of cognitive decline. However, any global prevention strategy may need to consider ethno-regional differences.

Author summary

Why was this study done?

- There is a growing global burden associated with cognitive decline and dementia.
- Evidence for modifiable risk factors that could be targeted to reduce this burden needs to be improved.
- Risk factors for cognitive decline and dementia might differ between ethno-regional groups.

What did the researchers do and find?

- We analyzed cognitive performance and risk factor data from 48,522 older individuals, provided by 20 studies of aging representing 15 countries (Australia, Brazil, Cuba, France, Germany, Greece, Hong Kong, Italy, Japan, Singapore, Spain, South Korea, The Netherlands, the United Kingdom, and the United States). Cognitive performance was measured as Mini-Mental State Examination (MMSE) and global cognition scores.
- When controlling for confounding risk factors, the apolipoprotein E $\epsilon 4$ allele (*APOE*4*), depression, diabetes, current smoking, and history of stroke were associated with poorer cognitive performance, and higher levels of education and vigorous physical activity were associated with better performance. Age, *APOE*4*, and diabetes were associated with faster cognitive decline.
- Compared to white people, Asian people showed stronger associations between having ever smoked and cognitive performance, and between diabetes and cognitive decline.

Australian Advisory Board of Biogen Pharmaceuticals. All other authors have declared that no competing interests exist.

Abbreviations: *APOE** 4, apolipoprotein E ϵ 4 allele; BMI, body mass index; COSMIC, Cohort Studies of Memory in an International Consortium; IPD, individual participant data; MMSE, Mini-Mental State Examination; SD, standard deviation; SE, standard error.

What do these findings mean?

- Modifiable risk factors associated with cognitive decline include education, smoking, physical activity, diabetes, and stroke.
- If these associations are determined to be causal, interventions targeting these factors may help reduce the global burden of cognitive decline and dementia.
- Interventions may require tailoring to particular ethno-regional groups.

Introduction

Whether a normal aspect of the aging process or a consequence of neuropathological changes arising from many possible causes, cognitive decline is almost invariably associated with growing old [1,2]. The world's population is aging rapidly, and with no effective therapies, the global financial and societal burdens of cognitive decline are set to rise. Modifiable risk factors for cognitive decline offer means to intervene and prevent or delay these rising global burdens. However, the evidence base for associations between modifiable risk factors and cognitive decline remains poor, and improving this is a research priority [1,3].

This study aims to improve the understanding of associations between risk factors and late-life cognitive performance and decline. The first of 3 distinctive features of this study is a comprehensive examination of risk factors, with a large range of demographic, medical, lifestyle, and physical and mental health factors investigated. Second is the global scale, with data obtained from 20 population-based cohorts from 15 countries across 5 continents. Third is the use of individual participant data (IPD), which has advantages over aggregate approaches, including the ability to standardize analyses across samples and to adjust for confounding factors [4]. Having previously identified faster rates of cognitive decline in Asian people than in white people [5], we also investigate whether the effects of risk factors differ between Asian people and white people in this analysis. This study was done to identify and further assess risk factors for poorer cognitive performance and decline in late life, and to determine whether associations between particular factors and cognition are global.

Methods

Contributing studies

All 20 contributing cohorts were population-based and members of the Cohort Studies of Memory in an International Consortium (COSMIC) collaboration [6], and are detailed in Table 1. Fourteen of these cohorts were included in our previous report on cognitive decline [5]. The additional 6 cohorts included in this study are CHAS, LEILA75+, MAAS, MoVIES, SALSA, and Tajiri, which expand the number of countries covered by 3 (Cuba, Germany, and The Netherlands) and increase the representation of Latin Americans and North American Hispanics. Full cohorts were generally not used, as we excluded individuals with dementia at baseline or who were missing age, sex, education, or dementia status data (typically less than 1%; S1 and S2 Tables). The cohorts had various assessment schedules (2–16 waves) and follow-up durations (2–15 years; S3 Table). This project was approved by the University of New South Wales Human Research Ethics Committee (HC 12446 and HC 17292). The contributing cohorts had prior ethics approval (S4 Table). This study is reported as per the Strengthening

Table 1. Contributing studies (in alphabetical order).

Study	Abbreviation	Location	Main race/ethnicity	Years run ^a	Reference
Bambui Cohort Study of Ageing	Bambui	Bambui, Brazil	Brazilian	1997–2013	Lima-Costa et al. [7]
Cognitive Function & Ageing Study	CFAS	United Kingdom ^b	White	1989–	Brayne et al. [8]
Cuban Health and Alzheimer Study	CHAS	Havana and Matanzas, Cuba	White, black, mixed ^c	2003–	Llibre-Rodriguez et al. [9]
Einstein Aging Study	EAS	New York, US	White, black ^d	1993–	Katz et al. [10]
Etude Santé Psychologique Prévalence Risques et Traitement	ESPRIT	Montpellier, France	White	1999–	Ritchie et al. [11]
Hellenic Longitudinal Investigation of Aging and Diet	HELIAD	Larissa and Marousi, Greece	White	2010–	Dardiotis et al. [12]
Hong Kong Memory and Ageing Prospective Study	HK-MAPS	Hong Kong	Chinese	2005–	Wong et al. [13]
Invecchiamento Cerebrale in Abbiategrasso	Invece.Ab	Abbiategrasso, Italy	White	2010–2015	Guaita et al. [14]
Korean Longitudinal Study on Cognitive Aging and Dementia	KLOSCAD	South Korea (nationwide)	Korean	2009–2018	Han et al. [15]
Leipzig Longitudinal Study of the Aged	LEILA75+	Leipzig, Germany	White	1997–2014	Riedel-Heller et al. [16]
Maastricht Aging Study ^e	MAAS	South Limburg, The Netherlands	White	1993–2018	Jolles et al. [17]
Monongahela Valley Independent Elders Survey	MoVIES	Mid-Monongahela Valley, PA, US	White	1987–2002	Ganguli et al. [18]
Personality and Total Health Through Life Project	PATH	Canberra, Australia	White	2001–	Anstey et al. [19]
Sacramento Area Latino Study on Aging	SALSA	Sacramento area, CA, US	Hispanic, Mexican ancestry	1998–2008	Haan et al. [20]
São Paulo Ageing & Health Study	SPAH	São Paulo, Brazil	Brazilian	2003–2008	Sczufca et al. [21]
Sasaguri Genkimon Study	SGS	Sasaguri, Japan	Japanese	2011–	Narazaki et al. [22]
Singapore Longitudinal Ageing Studies (I)	SLASI	Singapore	Chinese	2003–	Feng et al. [23]
Sydney Memory and Ageing Study	Sydney MAS	Sydney, Australia	White	2005–	Sachdev et al. [24]
Tajiri Project	Tajiri	Tajiri, Japan	Japanese	1998–2005	Meguro et al. [25]
Zaragoza Dementia Depression Project	ZARADEMP	Zaragoza, Spain	White	1994–	Lobo et al. [26]

^aStudies without an end date are ongoing.

^bFive identical centers including Cambridgeshire, Gwynedd, Newcastle, Nottingham, and Oxford.

^cWhite 72.4%, black 16.5%, mixed 11.0%.

^dWhite 66.5%, black 27.6%.

^eOnly participants aged 55 years or more at baseline were included.

<https://doi.org/10.1371/journal.pmed.1002853.t001>

the Reporting of Observational Studies in Epidemiology (STROBE) guideline ([S1 Checklist](#)), and the prospective analysis plan is provided as [S1 Text](#).

Measures

All cohorts provided age and sex data. Educational attainment was provided as years in full-time education or converted to this from categorical data ([S5 Table](#)).

Our first cognitive outcome measure was a brief global cognitive or screening test: the Mini-Mental State Examination (MMSE) [27] in 16 cohorts (the 4 exceptions are detailed in [S6 Table](#)). The second measure was a global cognition composite score, calculated from 4 neuropsychological tests, each representing 1 of 4 cognitive domains. Cohorts varied in the neuropsychological tests administered, so for each domain we used a single common test or

type: delayed word list recall for memory, semantic fluency for language, and Trail Making Test A and B for processing speed and executive functioning, respectively (S6 Table).

The baseline factors investigated were age, sex, education, current alcohol consumption (nil/minimal, 1 drink/week, 2+ drinks/week), anxiety, apolipoprotein E ϵ 4 allele (*APOE*4*) carriage (having at least 1 ϵ 4 allele), atrial fibrillation, blood pressure and pulse pressure, body mass index (BMI), cardiovascular disease, depression (both current and history of), diabetes, health (self-reported: very good, good, or poor), high cholesterol (either total cholesterol or triglycerides), hypertension, peripheral vascular disease, physical activity (minimal, or moderate or vigorous at least once a week), smoking (never, past, current), and history of stroke. For some of these factors, while particular levels may be considered as increasing risk, others may be considered as protective. For simplicity we refer to all of the factors investigated as risk factors. Most cohorts lacked data for some factors (S7 Table). The available data for some factors were comparable across the contributing studies as presented (*APOE*4*, BMI, blood pressure and pulse pressure, and smoking). Other factors required harmonization because the type and number of measures for these varied across the studies. For binary medical and mental health condition variables (anxiety, current depression, history of depression, hypertension, diabetes, high cholesterol, peripheral vascular disease, atrial fibrillation, cardiovascular disease, and stroke), we used all available information from a study relevant to diagnosing or classifying the condition. For example, in a study with limited information, hypertension may be classified only from a medical history record, while for another study, it may be indicated by any of self-reported history, use of relevant medication, or measured blood pressure exceeding values indicated by international guidelines. Some factors required further work to harmonize, including the transformation or collapsing of original responses into a standard format (alcohol consumption, health, and physical activity). This involved a more subjective approach: For example, the division of general health responses into 3 categories for some studies was informed by the distribution of individuals across categories in the majority of studies (i.e., smaller proportions endorsing each of the best and worst health levels than the middle level). Physical activity was the most difficult factor to harmonize, given the large variety of measures across the studies, from simple questions on general activity to more involved questionnaires that specified activities and the frequency and duration these were participated in. Our harmonization protocols for all of the factors, including the specific conditions included in factors like cardiovascular disease, are fully detailed in S8–S20 Tables.

Statistical analysis

Standardization of outcome scores. First, within each study, raw MMSE and domain scores, pooled across all waves, were transformed to have a Gaussian (or normal) distribution, calculated so that the transformed value has the same percentile value as the original value in the original distribution (in SPSS such scores are described simply as normal scores, but are produced under the Rank Cases procedure). Transformed score outliers were then winsorized to values plus or minus 3 standard deviations (SDs) from the mean scores. These were then standardized by converting to Z-scores within each study, using estimated means and SDs of baseline scores within each study at common values of age, sex, and education. The common values were the average values at baseline from data pooled across all studies (common values: age = 72.7 years, education = 9.0 years, and sex = 0.42, indicating 42% males). SDs used for the calculation of the Z-scores were the estimated SDs of the residuals (i.e., the standard errors [SEs] of the estimates) obtained from the regression models for each study after adjustment for age, sex, and education. Our method of standardizing scores from multiple studies is essentially the same as that described by Griffith et al. [28] for obtaining standardized demographically

based category-centered scores. However, instead of obtaining *Z*-scores using means and SDs from subsamples within each study with the same restricted ranges of demographic characteristics, we used regression models to obtain estimated means and SDs for specific common values of demographic variables. The global cognition composite score was computed by averaging the standardized domain scores, and then standardizing the average scores using the same process described above. A global cognition composite score was computed for individuals with data for at least 3 cognitive domains.

Associations of age at baseline, sex, and education with cognitive performance/decline. Our analyses used linear mixed models, which are widely used to analyze longitudinal data and are recommended to address missing data as well as to reduce non-random attrition bias. Linear mixed models were used to examine the associations of age at baseline, sex, and education with cognitive performance evaluated at a common value of “time in study” equal to the mean value for the combined sample, as well as cognitive decline (per decade) on each outcome, separately for each cohort. These models included fixed effect terms for age at baseline (centered at the mean of 72.7 years), age at baseline squared, sex (centered at the proportion of 42% males), education (centered at the mean of 9.0 years), time in study (centered at the mean across all studies of 3.1 years), time in study squared, interactions between age at baseline and each of education and sex, and interactions between time and each of age at baseline, sex, and education (the full model equation is displayed in [S1 Text](#)). This selection of model terms was based on preliminary variable selection analyses, such that terms explaining at least 0.1 percent of variance on at least 1 outcome measure were retained (see [S1 Text](#) for details). The variables were centered to reduce collinearity between the variables and quadratic or interaction terms. Note that since time in study was centered at 3.1 years, the effects of predictors on cognition were for performance at this time in study. The intercept and time terms were treated as random effects, with an unstructured covariance type. Using a method described by Singer and Willet [29], we investigated the possible influence of baseline performance on cognitive decline by examining the covariance between the random effects of intercept and slope. For these analyses, time was coded to have the value 0 at baseline, so that the covariance term quantifies the relationship between individuals’ performance at baseline and their rate of change. In the presence of an overall decline in performance over time, a positive (or negative) covariance term implies that a lower performance at baseline is associated with a faster (or slower) rate of decline.

Associations between putative risk factors and cognitive performance/decline: Partially adjusted multivariable models. Associations between each potential risk factor and performance/decline for each cognitive outcome were examined using linear mixed models. The models included the following fixed effect terms: age at baseline, age at baseline squared, education, sex, age at baseline \times education, the factor being analyzed, time in study, time in study squared, and 2-way interactions between the factor and each of time in study, time in study squared, age at baseline, sex, and education (the full model equation is displayed in [S1 Text](#)). Preliminary analyses indicated quadratic associations between cognitive performance and both education and BMI, consistent with previous reports [30,31]. For this reason, in analyses where BMI or education were examined, quadratic terms for these were included, as well as their 2-way interactions with age, age squared, education, sex, time in study, and time in study squared. Separate linear mixed models were produced for each factor and outcome combination. The intercept and time terms were included as random terms, with an unstructured covariance type. While these models investigating risk factors 1 by 1 all included age, sex, and education, we refer to them as partially adjusted models to distinguish them from later models featuring multiple risk factors, which are referred to as fully adjusted models.

We used random effects IPD meta-analysis to pool the cohort-wise linear mixed model results to obtain pooled estimates of effect sizes for each of the model terms. Of particular interest were the associations between each factor (including age at baseline, sex, and education) and cognitive performance, the association between each factor and cognitive decline (i.e., the fixed effect of factor \times time in study), and the association between each factor and change in the rate of cognitive decline (i.e., the fixed effect of factor \times time in study squared). A negative pooled value for the factor term would indicate that the factor was associated with a lower level of cognitive performance at the average time in study of 3.1 years. A negative pooled value for the time in study term would indicate that cognition declined over time in the absence of the factor (or at its mean value, for continuous factors). Therefore, a negative pooled value for the factor \times time interaction term would indicate that having the factor was associated with a faster rate of decline than not having the factor. A significant negative pooled value for the factor \times time in study squared term would indicate that the presence of the factor is associated with a faster rate of decline with increasing time in study.

Associations between putative risk factors and cognitive performance/decline: Fully adjusted multivariable models. For each cognitive outcome, we fit multivariable models that featured multiple factors, and are thus termed fully adjusted, to determine independent associations with cognitive performance/decline. Not all the factors investigated above were included in these models as not all were available for every cohort, with the choice of data used involving a compromise between the number of factors included and the number of cohorts with data for all factors. The first model (fully adjusted model 1) used data from 11 cohorts (Bambui, EAS, ESPRIT, HELIAD, HK-MAPS, Invece.Ab, KLOSCAD, PATH, SALSA, SLASI, and Sydney MAS; $N = 13,917$) and included alcohol consumption, *APOE**4 status, cardiovascular disease, diabetes, high cholesterol, hypertension, smoking, and history of stroke, as well as age, sex, and education. Also included were the interactions between each factor and age, age squared, education, sex, time in study, and time in study squared. Model terms from within each cohort were pooled using random effects IPD meta-analysis using the same process described above. This model was repeated with *APOE**4 status replaced with either BMI (using the same cohorts except for SGS replacing HK-MAPS; $N = 17,270$) or current depression (using the same cohorts except for SGS replacing SLASI; $N = 18,011$). Separate multivariable models were fit because combining *APOE**4, BMI, and current depression in 1 model (either together or in pairs) meant that the analyses would only include a maximum of 2 cohorts from Asian countries. We reasoned that a minimum of 3 cohorts from Asian countries was required to perform meaningful comparisons with cohorts of white people (see below). A second fully adjusted model (fully adjusted model 2) used data from only 9 cohorts (Bambui, EAS, ESPRIT, HELIAD, Invece.Ab, KLOSCAD, PATH, SALSA, and Sydney MAS; $N = 11,897$) but simultaneously investigated a larger set of factors: alcohol consumption, *APOE**4 status, BMI, cardiovascular disease, depression, diabetes, high cholesterol, hypertension, physical activity, smoking, and history of stroke. Categorical factors with 3 levels were also examined as binary factors by collapsing the higher levels and comparing against the lowest (e.g., past and current smoking collapsed to ever smoking and compared against never smoked). This allowed for the inclusion of cohorts with only binary level data on these factors. We report significant results for both the binary and multi-level versions of each factor, to better understand both the overall and dose-response relationship of a factor's effects. We also investigated whether baseline cognitive performance was related to rate of change in each of our fully adjusted models, using the same approach as for the partially adjusted models described above. Heterogeneity of effect sizes among samples was assessed using the I^2 statistic, reflecting the proportion of variation due to variability between studies, rather than sampling error or chance. We report I^2 values obtained from fixed effects models, which give appropriate indications of variation across studies. I^2 values of $<40\%$,

40%–60%, and >60% were taken to indicate low, moderate, and substantial heterogeneity, respectively, as per Cochrane Collaboration guidelines [32].

Ethno-regional comparisons. We examined whether relationships between factors and cognitive performance/decline differed between groups of white people and Asian people; included in the white group were all individuals self-reporting or classified as a white person from 11 cohorts of predominantly white people (CFAS, EAS, ESPRIT, HELIAD, Invece.Ab, LEILA75+, MAAS, MoVIES, PATH, Sydney MAS, and ZARADEMP), and included in the Asian group were all individuals from 5 cohorts in countries with majority Asian populations (HK-MAPS, KLOSCAD, SGS, Tajiri, and SLASI, with the last cohort comprising 95.6% Chinese, 1.8% Malay, 2.1% Indian, and 0.6% other). Individuals from the Latin American and North American Hispanic cohorts (Bambui, CHAS, SPAH, and SALSA) were not included in these groups. We performed the partially adjusted and fully adjusted model 1 (including repeats with BMI or current depression replacing *APOE**4 status) linear mixed models described above using these groups, with the cohort-wise mixed model results pooled and differences between white people and Asian people tested using meta-regression. A binary, cohort-level variable (white person = 0, Asian person = 1) was included as a moderator term in the meta-regression. A significant moderator term would indicate a significant difference in the effect between white people and Asian people. Results for model terms were also pooled within the cohorts of white people or Asian people separately using random effects meta-analysis. The size, direction, and significance of model terms were examined within each group to help interpret significant moderator effects.

The Sydney COSMIC team created the pooled dataset and ran the linear mixed models using IBM SPSS Statistics 24. The meta-analyses were performed using the Metan and Metareg packages in Stata 13. Two-sided *p*-values were used, with an $\alpha = 0.05$ threshold for statistical significance.

Results

Sample description

The overall sample comprised 48,522 eligible individuals contributed by the 20 cohorts. Their baseline age ranged from 54 to 105 years (mean = 72.7 \pm SD 7.5), and 58.4% were women. The mean number of years of education was 9.0 (SD = 4.5) years. [S21 Table](#) shows cohort-specific demographic characteristics, and [S22](#) and [S23 Tables](#) show the prevalence and mean values for the factors investigated.

Associations between factors and cognitive performance

Across all 20 cohorts, significant associations were found using both partially and fully adjusted multivariable models. We focus here on the fully adjusted model results, though later summarize the partially adjusted model results (full details in [S2 Text](#) and [S24–S26 Tables](#)). As shown in [Table 2](#), fully adjusted models identified increased age, *APOE**4 carriage, depression, diabetes, history of stroke, and current smoking as independently associated with lower scores for 1 or both of the MMSE and global cognition composite. Heterogeneity of these effects was low (I^2 values ranging between 0% and 26.4%), except for age (moderate heterogeneity in model 2: 56.2%) and *APOE**4 carriage (moderate heterogeneity in both models 1 and 2: 48.2% and 40.2%, respectively). Conversely, cardiovascular disease, higher education, and vigorous physical activity were associated with better cognitive performance. Heterogeneity for associations with cardiovascular disease and vigorous physical activity was low across models ($I^2 < 40%$). For education, however, heterogeneity was high in each model (except for MMSE

Table 2. Associations between putative risk factors and cognitive performance found with fully adjusted models^a.

Factor	Model 1 ^b				Model 2 ^c			
	Global cognition		MMSE		Global cognition		MMSE	
	B (SE)	I ² (%)	B (SE)	I ² (%)	B (SE)	I ² (%)	B (SE)	I ² (%)
Age at baseline	-0.091 (0.012)***	56.2	-0.052 (0.007)***	35.5	-0.103 (0.013)***	35.2	-0.060 (0.009)***	26.7
Education	0.115 (0.021)***	85.7	0.095 (0.011)***	71.2	0.126 (0.021)***	72.2	0.106 (0.010)***	33.0
Sex, male	-0.014 (0.088)	59.7	-0.040 (0.091)	76.8	-0.087 (0.108)	55.5	-0.147 (0.127)	74.5
Alcohol								
1 drink/week ^d	0.077 (0.108)	0	0.160 (0.085)	0	0.080 (0.113)	0	0.148 (0.087)	0
2+ drinks/week ^d	0.081 (0.110)	54.5	0.069 (0.051)	4.6	0.064 (0.111)	52.6	0.063 (0.049)	0
APOE*4 carrier	-0.311 (0.107)**	48.2	-0.006 (0.055)	11.9	-0.251 (0.101)*	40.2	-0.078 (0.049)	0
Body mass index ^e					0.001 (0.007)	0	-0.002 (0.006)	23.1
Cardiovascular disease	0.030 (0.058)	0	0.095 (0.044)*	0	0.027 (0.062)	0	0.141 (0.047)**	0
Depression, current					-0.113 (0.057)*	0	-0.073 (0.069)	31.5
Diabetes	-0.230 (0.097)*	26.3	-0.119 (0.085)	45.8	-0.209 (0.116)	37.9	-0.136 (0.084)	34.5
High cholesterol	-0.034 (0.071)	23.8	-0.034 (0.036)	0	0.012 (0.051)	0	-0.050 (0.039)	0
Hypertension	-0.170 (0.115)	64.3	-0.007 (0.044)	7.0	-0.206 (0.122)	61.3	-0.022 (0.044)	0
Physical activity								
Moderate ^f					0.087 (0.093)	28.7	0.069 (0.078)	31.0
Vigorous ^f					0.160 (0.146)	56.9	0.168 (0.061)**	0
Smoking								
Past ^g	0.045 (0.069)	11.2	-0.025 (0.043)	0	0.074 (0.080)	23.0	-0.020 (0.043)	0
Current ^g	-0.144 (0.170)	34.7	-0.217 (0.082)**	0	-0.134 (0.167)	33.1	-0.202 (0.082)*	0
History of stroke	-0.252 (0.249)	65.9	-0.223 (0.089)*	4.5	-0.218 (0.270)	68.7	-0.199 (0.086)*	0

^aResults are for the mean time in study (3.1 years) and controlled for age at baseline (mean = 73.1 years), education (mean = 9.15 years), and sex (40% male); negative B values indicate worse performance. Global cognition was calculated as a composite of 4 neuropsychological tests, each representing 1 of 4 cognitive domains: memory, language, processing speed, and executive functioning. MMSE denotes Mini-Mental State Examination. Empty cells are for factors not included in model 1.

* $p < 0.05$

** $p < 0.01$

*** $p < 0.001$.

^bUsed data from 11 cohorts ($N = 13,917$) and included alcohol consumption, APOE*4 status, cardiovascular disease, diabetes, high cholesterol, hypertension, smoking, and history of stroke.

^cUsed data from 9 cohorts ($N = 11,897$) and included alcohol consumption, APOE*4 status, BMI, cardiovascular disease, depression, diabetes, high cholesterol, hypertension, physical activity, smoking, and history of stroke.

^dVersus nil/minimal alcohol.

^eCentered at mean = 25.2 kg/m².

^fOne or more times/week versus minimal activity.

^gVersus never smoked.

<https://doi.org/10.1371/journal.pmed.1002853.t002>

performance in model 2). Models replacing APOE*4 status with BMI or current depression found no associations for these factors (S27 Table).

Associations between factors and cognitive decline

Analyses with no risk factors in the model and pooled across cohorts revealed declining scores over time for the global cognition composite ($B = -0.859$, $SE = 0.253$, $p < 0.01$) and the MMSE ($B = -0.452$, $SE = 0.168$, $p < 0.01$; S25 Table). Quadratic effects show the rate of decline per decade becoming even greater as time in study progressed for the global cognition composite score ($B = -0.049$, $SE = 0.023$, $p < 0.05$).

As shown in [Table 3](#), fully adjusted multivariable models found that higher age and *APOE**4 carriage were both associated with more decline on both cognitive outcomes, and that diabetes was associated with more decline in MMSE score. Cardiovascular disease was associated with less cognitive decline. Heterogeneity of these associations was low (I^2 values ranging between 0% and 11.1%), except for *APOE**4 carriage, for which heterogeneity was moderate ($I^2 = 46.6\%$). Quadratic effects indicated that as time in study progressed, the slower rate of decline associated with high cholesterol became even slower, whereas the slower rate of decline associated with alcohol consumption weakened. The faster rate of decline associated with current smoking also diminished as time progressed ([S28 Table](#)). Heterogeneity of these associations was low (all $I^2 = 0$). Models replacing *APOE**4 status with BMI or current depression found no associations for these factors ([S29](#) and [S30 Tables](#)).

[Table 4](#) summarizes the significant linear associations between factors and cognitive performance and decline found with partially or fully adjusted multivariable models.

Comparisons of associations between white people and Asian people

Comparisons of associations between white people and Asian people were not performed for fully adjusted model 2 because this model retained only 1 Asian cohort. Significant results were found only with partially adjusted models.

[Fig 1](#) shows significant differences in the association of risk factors with cognitive performance between white people and Asian people. Global cognition composite scores for men were lower than for women in white people but higher than for women in Asian people (group difference: $B = 0.334$, $SE = 0.085$, $p < 0.001$). Moderate heterogeneity for this effect ($I^2 = 54.9$) suggests that the effect was not fully accounted for by ethno-regional differences. For the MMSE, *APOE**4 carriers had higher scores than non-carriers in Asian people but not in white people (group difference: $B = 0.343$, $SE = 0.146$, $p < 0.05$). Poor self-rated health was associated with lower MMSE scores in white people but not in Asian people (group difference: $B = 0.266$, $SE = 0.12$, $p < 0.05$). Compared to white people, Asian people showed greater negative effects on MMSE scores associated with ever smoking ($B = -0.240$, $SE = 0.118$, $p < 0.05$). Heterogeneity for the effects of *APOE**4 carriage, poor self-rated health, and smoking was low (I^2 range = 0%–8.8%), suggesting that ethno-regional differences played a considerable role. For full results, including within-group effects, see [S31 Table](#).

The overall rate of cognitive decline did not differ between white people and Asian people (see the results for models featuring no risk factors in [S32 Table](#)). However, the trajectories for MMSE scores associated with some factors differed significantly between white people and Asian people, as shown in [Fig 2](#). There was greater decline associated with diabetes for Asian people than for white people ($B = -0.658$, $SE = 0.27$, $p < 0.05$; [S32 Table](#)). Further, quadratic effects showed that with increasing time in study, there was a growing rate of decline associated with each of diabetes ($B = -0.296$, $SE = 0.137$, $p < 0.05$), high cholesterol ($B = -0.296$, $SE = 0.132$, $p < 0.05$), and higher education ($B = -0.024$, $SE = 0.011$, $p < 0.05$) among Asian people compared to white people ([S33 Table](#)). Heterogeneity for each of these group differences was low ($I^2 < 10\%$), again suggesting a substantial influence of ethno-regional differences.

Discussion

This large meta-analysis of over 48,000 individuals from 15 countries investigated associations between putative risk factors and late-life cognition. It has an additional 6 cohorts (including from 3 new countries) relative to our earlier study of cognitive decline in COSMIC cohorts [5], but more importantly includes a wide range of risk factors, beyond only those of age, sex, education, and *APOE**4 carriage that we previously investigated. The current study found that

Table 3. Effects of putative risk factors on the rate of cognitive decline found with fully adjusted models^a.

Factor	Model 1 ^b				Model 2 ^c			
	Global cognition		MMSE		Global cognition		MMSE	
	B (SE)	I ² (%)	B (SE)	I ² (%)	B (SE)	I ² (%)	B (SE)	I ² (%)
Age at baseline	-0.065 (0.005) ^{***}	0	-0.046 (0.005) ^{***}	18.2	-0.067 (0.006) ^{***}	0	-0.051 (0.005) ^{***}	0
Education	-0.017 (0.011)	56.3	0.002 (0.008)	39.4	-0.024 (0.013)	62.9	0 (0.009)	39.7
Sex, male	0.016 (0.074)	37.7	0.025 (0.075)	50.0	0.003 (0.079)	38.0	-0.072 (0.048)	0
Alcohol								
1 drink/week ^d	0.254 (0.304)	57.8	0.121 (0.090)	0	0.137 (0.286)	49.8	0.155 (0.094)	0
2+ drinks/week ^d	0.120 (0.140)	43.1	0.009 (0.083)	28.6	0.055 (0.162)	49.9	-0.003 (0.09)	36.6
APOE*4 carrier	-0.339 (0.143) [*]	38.8	-0.103 (0.078)	24.3	-0.409 (0.177) [*]	49.6	-0.167 (0.077) [*]	17.5
Body mass index ^e					-0.014 (0.009)	0	0.003 (0.012)	52.8
Cardiovascular disease	0.140 (0.077)	0	0.156 (0.071) [*]	8.9	0.169 (0.083) [*]	0	0.182 (0.067) ^{**}	0
Depression, current					0.033 (0.220)	47.2	-0.03x (0.103)	30.8
Diabetes	-0.010 (0.100)	0	-0.128 (0.126)	45.7	-0.012 (0.108)	0	-0.185 (0.091) [*]	11.1
High cholesterol	0.074 (0.065)	0	-0.080 (0.052)	0	0.094 (0.070)	0	-0.048 (0.083)	30.8
Hypertension	-0.156 (0.177)	57.7	0.058 (0.051)	0	-0.114 (0.179)	46.9	0.065 (0.056)	0
Physical activity								
Moderate ^f					0.033 (0.096)	0	0.123 (0.124)	47.0
Vigorous ^f					0.039 (0.160)	26.6	0.058 (0.092)	13.7
Smoking								
Past ^g	-0.096 (0.073)	0	-0.007 (0.089)	40.1	-0.069 (0.085)	7.1	-0.009 (0.088)	39.5
Current ^g	-0.084 (0.220)	11.7	-0.090 (0.183)	46.4	-0.051 (0.244)	17.0	-0.090 (0.183)	46.4
History of stroke	-0.280 (0.177)	0	-0.136 (0.243)	62.2	-0.239 (0.217)	8.8	-0.278 (0.154)	20.4
Baseline score	-0.030 (0.050)	41.8	0.007 (0.046)	69.7	0.002 (0.036)	13.0	0.014 (0.039)	53.1

^aFactor × time interactions for the mean time in study (3.1 y), controlled for age at baseline (mean = 73.1 y), education (mean = 9.15 y), and sex (40% female); negative B values indicate more decline. Global cognition was calculated as a composite of 4 neuropsychological tests, each representing 1 of 4 cognitive domains: memory, language, processing speed, and executive functioning. MMSE denotes Mini-Mental State Examination. Empty cells are for factors not included in model 1.

^{*}*p* < 0.05

^{**}*p* < 0.01

^{***}*p* < 0.001.

^bUsed data from 11 cohorts (*N* = 13,917) and included alcohol consumption, APOE*4 status, cardiovascular disease, diabetes, high cholesterol, hypertension, smoking, and history of stroke.

^cUsed data from 9 cohorts (*N* = 11,897) and included alcohol consumption, APOE*4 status, BMI, cardiovascular disease, depression, diabetes, high cholesterol, hypertension, physical activity, smoking, and history of stroke.

^dVersus nil/minimal alcohol.

^eCentered at mean = 25.2 kg/m².

^fOne or more times/week versus minimal activity.

^gVersus never smoked.

<https://doi.org/10.1371/journal.pmed.1002853.t003>

higher age showed negative associations with performance and decline, in keeping with age being the strongest risk factor for dementia [33], and also for mild cognitive impairment [34]. Other factors independently associated with poorer performance were APOE*4 carriage, depression, diabetes, current smoking, and history of stroke. APOE*4 carriage and diabetes were also both independently associated with cognitive decline. Associations of cognitive performance and decline with APOE*4 reflect its being a risk factor for Alzheimer disease [35], and the corresponding moderate levels of heterogeneity are consistent with the relationship between APOE*4 and dementia being influenced by factors we did not control for in these analyses, such as race/ethnicity (which was controlled only in later analyses) and midlife

Table 4. Summary of factors significantly associated with worse or better cognitive performance and/or faster or slower cognitive decline^a.

Factor	Performance	Decline
Worse performance or faster decline		
Age at baseline	Global; MMSE	Global; MMSE
Anxiety ^b	Global	
APOE* 4 carriage	Global	Global; MMSE
Body mass index	Global	
Depression, current	Global; MMSE	
Diabetes	Global; MMSE	MMSE
Health, poor ^{b,c}	Global; MMSE	Global
Hypertension	Global	
Peripheral vascular disease	Global	
Smoking, current	Global	
Smoking, past		Global
Stroke	Global; MMSE	Global; MMSE
Better performance or slower decline		
Alcohol, 1 drink/week ^d	MMSE	
Alcohol, 2+ drinks/week ^d	MMSE	MMSE
Cardiovascular disease	MMSE	Global; MMSE
Education	Global; MMSE	
Physical activity, vigorous ^e	Global; MMSE	

^aSignificant effects for at least 1 fully adjusted multivariable model (independent effects) are shown in bold font, and significant effects for only partially adjusted multivariable models are in normal font. Empty cells indicate no significant results. Global cognition was calculated as a composite of 4 neuropsychological tests, each representing 1 of 4 cognitive domains: memory, language, processing speed, and executive functioning. MMSE denotes Mini-Mental State Examination.

^bNot included in fully adjusted models.

^cVersus very good.

^dVersus nil/minimal alcohol.

^eOne or more times/week versus minimal activity.

<https://doi.org/10.1371/journal.pmed.1002853.t004>

vascular risk factors [36,37]. Evidence also links diabetes with poorer cognitive performance and greater decline [38], as well as increased risk of dementia [39]. The relationship between late-life depression and cognitive dysfunction is complex [40], but our finding of an association with performance but not decline might favor late-life depression being a psychological response to cognitive impairment or a prodrome of dementia, rather than a causal factor. Cognitive outcomes following stroke are varied [41], and our finding of stroke being independently associated with poorer performance but not decline suggests greater effects of stroke on initial impairment than on more gradual later changes in cognition. While implicated as a risk factor for cognitive decline and dementia [42], we found current smoking to be associated with a slowing of the rate of decline over time. This might reflect a protective effect of nicotine or smoking in late-life on cognition [43], or a selection bias arising from the death or dropout of smokers experiencing detrimental health or cognitive effects. Smokers had poorer cognitive performance than non-smokers, consistent with an overall negative cumulative impact of smoking on late-life cognition [44].

Education and vigorous physical activity were both independently associated with better cognitive performance. The association for education is well established [45], but our

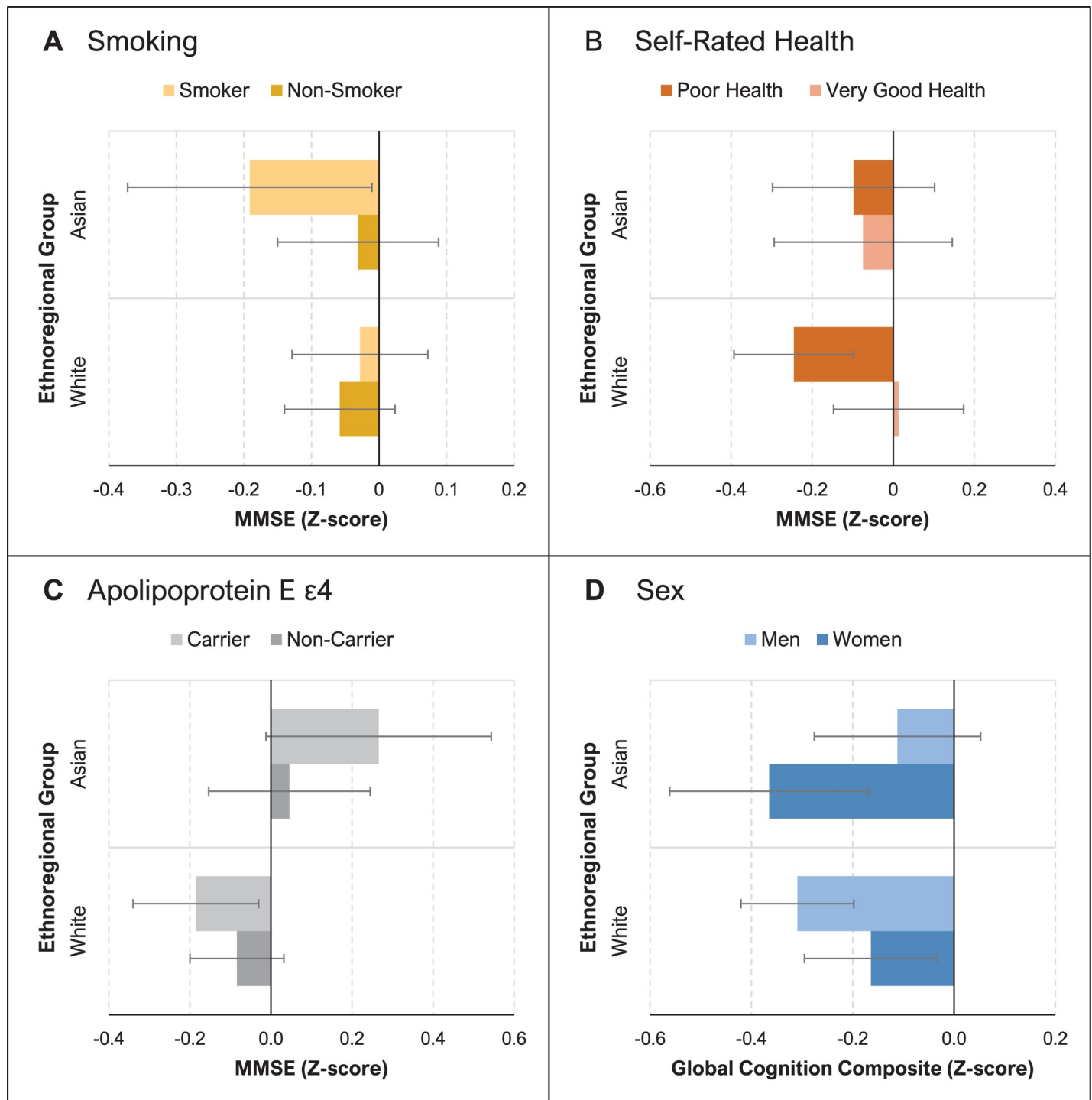


Fig 1. Risk factors for cognitive performance that differ between Asian people and white people. Bars show standardized scores at the mean time in study (3.1 years) for participants with and without the risk factor in both groups: Asian people and white people. Error bars indicate standard error of the mean. Mean Mini-Mental State Examination (MMSE) performance is compared for smokers and non-smokers (A), participants with poor versus very good self-rated health (B), and apolipoprotein E ε4 allele (*APOE**4) carriers and non-carriers (C). (D) compares the mean performance for the global cognition composite (calculated from tests of 4 cognitive domains) in men and women.

<https://doi.org/10.1371/journal.pmed.1002853.g001>

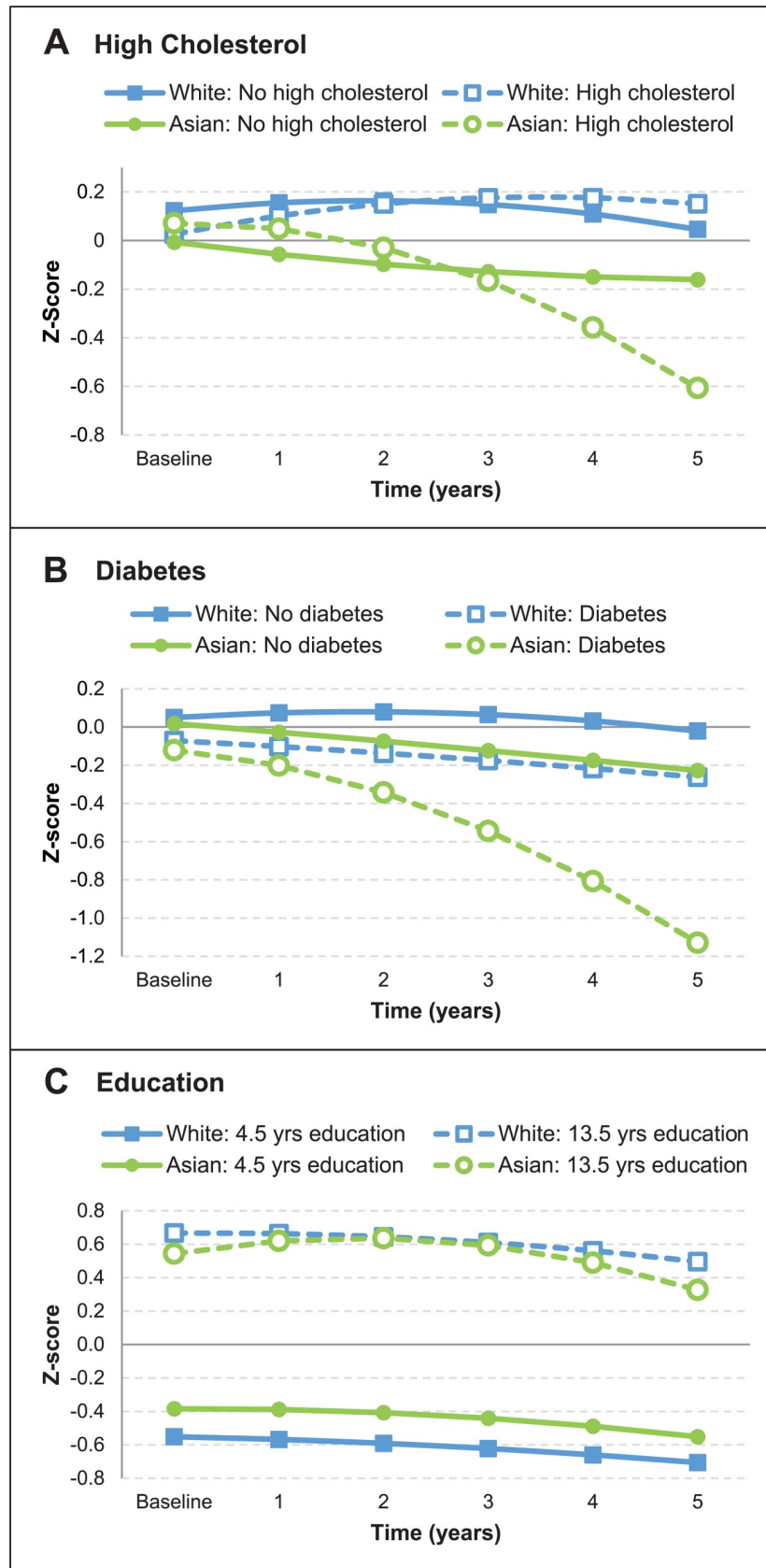


Fig 2. Risk factors for cognitive decline that differ between Asian people and white people. Fitted trajectories are for the first half decade since baseline, and show mean changes in standardized Mini-Mental State Examination (MMSE) scores for both groups: Asian people and white people. (A) compares participants with and without high cholesterol, and (B) compares participants with and without diabetes. (C) compares participants with high and low levels of education, determined as 1 standard deviation (4.5 years) above and below the mean of 9 years, respectively.

<https://doi.org/10.1371/journal.pmed.1002853.g002>

observation of high heterogeneity in the association between education and cognition across cohorts is consistent with a previously reported large degree of ethno-geographic variability in the association between education and dementia [46]. While existing evidence supports a positive effect of physical activity on cognition [47], we found that vigorous physical activity was associated with better cognition, but that moderate activity was not. However, we did not distinguish between moderate intensity activity types or consider duration or frequency beyond at least once a week. The association between physical activity and cognition was independent of potential mediating factors like BMI and cardiovascular disease, consistent with more direct neuroplastic effects [47]. Cardiovascular disease was associated with better cognitive performance and slower decline. This differs from reports of the opposite association [48] or of no association in individuals aged 65 years or more [49]. While this result remains unaccounted for, the true association may have been obscured by not controlling for the potentially protective effects of medications [50]. Our results for high cholesterol are consistent with this being associated with a lower risk of dementia [51] and less cognitive decline in late life [52].

Atrial fibrillation is often reported as a risk factor for cognitive decline [53], but this association was not observed in the current study. From another study, the risk of cognitive decline appears to be stronger with earlier age of onset and longer duration of atrial fibrillation [54], but we did not have age of onset data to gauge whether participants in our cohorts had atrial fibrillation long enough to elicit statistically significant effects. We also did not have the data needed to consider the use of anticoagulants, which a recent meta-analysis found significantly reduced the effects of atrial fibrillation on cognitive decline [55].

Global cognition composite scores for men were lower than for women among white people, but this was reversed in Asian people. Older women generally outperform older men on verbal memory tests, possibly because of biological mechanisms such as effects of estrogen [56] or sex-specific cognitive reserve [57], but also sociocultural factors [58]. Opposite effects have been attributed to gender disparities in educational opportunities and socioeconomic investment in some countries, including China [59]. Indeed, another study from China found better memory performance in women than men when levels of education were comparable [60]. Our observation of a moderate level of heterogeneity for ethno-regional differences in the association between sex and cognition supports the idea that factors like socioeconomics may be involved, but that these are not ethno-regionally specific. *APOE*4* carriers had higher MMSE scores than non-carriers among Asian people, but not among white people. The low heterogeneity of this difference suggests that ethno-regional differences played a large role in accounting for the moderate level of between-study variability of this effect when investigated across all cohorts (Table 2). While some studies report better performance on particular cognitive tests among carriers [61], higher scores are not expected, given the association between *APOE*4* and Alzheimer disease [35]. However, the prevalence of *APOE*4* among individuals with Alzheimer disease is reportedly lower in Asian countries than in North America and Northern Europe [62]. This potentially suggests *APOE*4* has less detrimental cognitive effects in Asian people, but does not explain better scores. *APOE*4* is a strong predictor of mortality [63], and differences in this association between white people and Asian people that could generate different levels of survivor bias in these groups remain to be explored. Lower cognitive performance in white people with poor self-rated health is consistent with expectations [64].

However, Asian people with poor self-rated health did not show worse cognition, possibly because culturally based health perceptions led them to underestimate their true health status, as suggested by the finding that US residents of Asian ethnicity (~80% foreign-born) more often report poor or fair health than US-born white people, despite having objectively better health [65]. Ever smoking had larger negative effects on MMSE scores in Asian people than in white people. While this effect is potentially related to differences in the lifetime duration and intensity of smoking [44], we lack sufficient data to investigate this.

Compared to white people, there was both more cognitive decline and a growing rate of decline associated with diabetes in Asian people, who might develop diabetes younger and experience more complications than people of European descent [66]. We also found a growing rate of cognitive decline associated with high cholesterol in Asian people. A previous finding of faster cognitive decline in Chinese participants with high cholesterol was thought to potentially reflect ethnic/racial differences and/or a low use of statins, which may convey cognitive benefits [67]. Similar effects could help to explain our results, given a report of lower statin use among outpatients with atherothrombosis in Asian countries (including all that we investigated) than in North America, Western Europe, and Australia [68]. The cognitive reserve hypothesis suggests that education delays cognitive decline by offsetting the effects of accumulating neuropathology, but that decline is rapid once the level of neuropathology cannot be compensated for [69]. The growing rate of cognitive decline associated with increased education among Asian people compared to white people might be because white people had higher levels of education overall, and did not show an association between education and decline at the mean age of study because of greater cognitive reserve.

The results of this study show similarities with and differences from our earlier study using 14 COSMIC cohorts [5]. However, it is important to note that the focuses of the studies were slightly different, and the corresponding differences in the statistical approaches mean that the results from the 2 studies are not strictly comparable. Our earlier study focused on modeling the trajectory of variation of cognitive performance with age, combining both cross-sectional and longitudinal variation of cognition with age, whereas the current study made time in study the main predictor variable (and included age at baseline as a covariate). The latter approach distinguishes between the effects of cross-sectional and longitudinal variation of age, and is similar to that used by Piccinin et al. [70]. Faster decline with greater age, or with longer time in study, and *APOE**4 carriage was found in both COSMIC studies, but only the earlier study found slightly slower decline on the MMSE with more education or being male, and slightly faster decline on the MMSE for Asian people than for white people. The addition of new cohorts and change in overall ethno-regional representation may have also contributed to these differences, as could have the slightly greater overall level of education of the participants in the current study (9.0 versus 8.8 years), given how education can affect decline via cognitive reserve as discussed above.

Our study has a number of limitations, including the broad classifications of people as white or Asian that overlook major ethnic and genetic diversity. We aim to expand the number of COSMIC members from particular countries to enable us to perform analyses with more refined groups, such as Chinese or Japanese rather than Asian people more broadly, in future investigations. Harmonization of data can involve some loss or distortion of information that may alter the nature of associations found. This may be particularly so for physical activity, where the nuances of questionnaires used by some studies were lost during harmonization to a simpler format that accommodated data from studies with less sophisticated measures. Other limitations include insufficient anxiety and general health data to investigate any independent associations of these factors with cognition. All of the factors we investigated have been previously linked to cognitive performance or decline, but so have others not included in the current study, including hearing loss and social isolation [71]. We intend to investigate these

factors in the future, using different and smaller sets of COSMIC cohorts that have these data. Further, we did not specifically investigate factors at midlife, when some, such as high cholesterol, exert their strongest late-life cognitive effects [72]. The MMSE has been criticized as psychometrically unsound for assessing cognitive change in healthy older adults [73], and its having different properties from our global cognition composite may explain some of the different findings between these measures. Also, only using global measures of cognition means effects of factors associated with particular cognitive domains were not investigated. Finally, across all factors investigated, we found more to be associated with cognitive performance than with cognitive decline. This suggests that many of the associations may be due to common or confounding causes rather than the identified factors having causal effects on cognitive change in late life.

In this study, we identified factors with independent effects on late-life cognitive performance and decline. With data from so many diverse international cohorts, our results can be generalized on a global scale. Some of the factors we identified are modifiable, including education, smoking, physical activity, diabetes, and stroke. However, since this analysis cannot establish causality, the utility of targeting these factors in interventions to delay or minimize cognitive decline, including that leading to dementia, is unknown. It was recently reported that some dementia risk factors are more prevalent in low- and middle-income countries than in high-income countries, which contributes to them having greater population attributable fractions for dementia in those regions [74]. This, together with our finding that white people and Asian people showed different associations between some factors and cognition, suggests that interventions to reduce the risk and level of cognitive decline and dementia may require tailoring to particular ethno-regional groups. Further consideration of how interventions are implemented is likely to be particularly required in low- and middle-income countries, where resources may be limited and access to healthcare restricted [75].

Supporting information

S1 Checklist. STROBE statement checklist for cohort studies.

(DOCX)

S1 Table. Criteria used to exclude participants with dementia at baseline.

(DOCX)

S2 Table. Percentages of individuals missing age, sex, education, and dementia status data.

(DOCX)

S3 Table. Number of assessment waves, time since baseline, and number of individuals with MMSE scores for each wave.

(DOCX)

S4 Table. Ethics approvals for the individual contributing studies.

(DOCX)

S5 Table. Year values assigned to educational attainment categories.

(DOCX)

S6 Table. Global or screening test and neuropsychological tests used to represent the cognitive domains investigated.

(DOCX)

S7 Table. Risk factors analyzed for each study.

(DOCX)

S8 Table. Potential risk factors investigated: Definitions and numbers of studies contributing data.

(DOCX)

S9 Table. General health: Study-specific details and harmonization protocols.

(DOCX)

S10 Table. Anxiety: Study-specific details and harmonization protocols.

(DOCX)

S11 Table. Depression: Study-specific details and harmonization protocols.

(DOCX)

S12 Table. Hypertension: Study-specific details and harmonization protocols.

(DOCX)

S13 Table. Diabetes: Study-specific details and harmonization protocols.

(DOCX)

S14 Table. High cholesterol: Study-specific details and harmonization protocols.

(DOCX)

S15 Table. Peripheral vascular disease: Study-specific details and harmonization protocols.

(DOCX)

S16 Table. Atrial fibrillation: Study-specific details and harmonization protocols.

(DOCX)

S17 Table. Cardiovascular disease: Study-specific details and harmonization protocols.

(DOCX)

S18 Table. Stroke: Study-specific details and harmonization protocols.

(DOCX)

S19 Table. Alcohol use: Study-specific details and harmonization protocols.

(DOCX)

S20 Table. Physical activity: Study-specific details and harmonization protocols.

(DOCX)

S21 Table. Baseline demographic characteristics of the cohorts.

(DOCX)

S22 Table. Mean (SD) and number with data for continuous factors in each study.

(DOCX)

S23 Table. Prevalence of categorical factors in each study.

(DOCX)

S24 Table. Partially adjusted model results for effects of factors on cognitive performance and per decade cognitive decline.

(DOCX)

S25 Table. Coefficients for the time in study and time in study squared terms from partially and fully adjusted models.

(DOCX)

S26 Table. Quadratic effects: Coefficients from partially adjusted models showing association between each risk factor and the change in slope with each additional decade (time in study squared).

(DOCX)

S27 Table. Regression coefficients for association between each risk factor and cognitive performance from fully adjusted model 1 alternatives that replace *APOE4 status with body mass index or depression.**

(DOCX)

S28 Table. Quadratic effects: Coefficients from fully adjusted models 1 and 2, showing association between each risk factor and the change in slope with each additional decade (time in study squared).

(DOCX)

S29 Table. Regression coefficients for association between each risk factor and change over time per decade from fully adjusted model 1 alternatives that replace *APOE4 status with body mass index or depression.**

(DOCX)

S30 Table. Quadratic effects: Coefficients from the fully adjusted model 1 alternatives (that replace *APOE4 with either body mass index or current depression) showing associations between each risk factor and the change in slope with each additional decade (time in study squared).**

(DOCX)

S31 Table. Comparisons of associations between factors and cognitive performance for white people and Asian people.

(DOCX)

S32 Table. Comparisons of associations between factors and per decade cognitive decline for white people and Asian people.

(DOCX)

S33 Table. Comparisons of associations between factors and per decade cognitive decline (quadratic effects) for white people and Asian people.

(DOCX)

S1 Text. Prospective analysis plan.

(DOCX)

S2 Text. Partially adjusted model results and discussion.

(DOCX)

Acknowledgments

The Sydney COSMIC team comprises Perminder S. Sachdev (head of COSMIC, and joint study leader of the Sydney Memory and Ageing Study), Darren M. Lipnicki (COSMIC study coordinator), Steve R. Makkar, John D. Crawford, Anbupalam Thalamuthu, Nicole A. Kochan, Yvonne Leung, Jessica W. Lo, and Gordana Popovic (consultant statistician).

Affiliations of the authors with the contributing studies are as follows (an asterisk indicates study leader or joint study leader). Bambui Cohort Study of Ageing: Maria Fernanda Lima-Costa, Erico Castro-Costa*, Cleusa Pinheiro Ferri; Cognitive Function & Ageing Study: Carol Brayne*, Blossom Stephan; Cuban Health and Alzheimer Study: Juan J. Llibre-Rodriguez*,

Jorge J. Llibre-Guerra, Adolfo J. Valhuerdi-Cepero; Einstein Aging Study: Richard B. Lipton*, Mindy J. Katz*, Carol A. Derby; Etude Santé Psychologique Prévalence Risques et Traitement: Karen Ritchie*, Marie-Laure Ancelin*, Isabelle Carrière; Hellenic Longitudinal Investigation of Aging and Diet: Nikolaos Scarmeas*, Mary Yannakoulia, Georgios M. Hadjigeorgiou; Hong Kong Memory and Ageing Prospective Study: Linda Lam*, Wai-chi Chan, Ada Fung; Invecchiamento Cerebrale in Abbiategrosso: Antonio Guaita*, Roberta Vaccaro, Annalisa Davin; Korean Longitudinal Study on Cognitive Aging and Dementia: Ki Woong Kim*, Ji Won Han, Seung Wan Suh; Leipzig Longitudinal Study of the Aged: Steffi G. Riedel-Heller*, Susanne Roehr, Alexander Pabst; Maastricht Aging Study: Martin van Boxtel*, Sebastian Köhler*, Kay Deckers; Monongahela Valley Independent Elders Survey: Mary Ganguli*, Erin P. Jacobsen, Tiffany F. Hughes; Personality and Total Health Through Life Project: Kaarin J. Anstey*, Nicolas Cherbuin; Sacramento Area Latino Study on Aging: Mary N. Haan*, Allison E. Aiello, Kristina Dang; Sasaguri Genkimon Study: Shuzo Kumagai*, Tao Chen, Kenji Narazaki; Singapore Longitudinal Ageing Studies (I): Tze Pin Ng*, Qi Gao, Ma Shwe Zin Nyunt; São Paulo Ageing & Health Study: Marcia Scazufca*, Sydney Memory and Ageing Study: Henry Brodaty*, Katya Numbers, Julian N. Trollor; Tajiri Project: Kenichi Meguro*, Satoshi Yamaguchi, Hiroshi Ishii; Zaragoza Dementia Depression Project: Antonio Lobo*, Raul Lopez-Anton, Javier Santabábara.

Further COSMIC study leaders: Yuda Turana (Atma Jaya Cognitive & Aging Research), Bagher Larijani and Iraj Nabipour (Bushehr Elderly Health Programme), Kenneth Rockwood (Canadian Study of Health and Aging), Xiao Shifu (Chinese Longitudinal Aging Study), Pierre-Marie Preux and Maëlen Guerchet (Epidemiology of Dementia in Central Africa), Ingmar Skoog (Gothenburg H70 Birth Cohort Studies), Toshiharu Ninimiya (Hisayama Study), Richard Walker (Identification and Intervention for Dementia in Elderly Africans study), Hugh Hendrie (Indianapolis-Ibadan Dementia Project), Liang-Kung Chen (I-Lan Longitudinal Aging Study), Suzana Shahar (Neuroprotective Model for Healthy Longevity among Malaysian Older Adults [LRGS TUA]), Jacqueline Dominguez (Marikina Memory and Aging Project), Murali Krishna (Mysore Studies of Natal Effects on Ageing and Health), Michael Crowe (Puerto Rican Elderly: Health Conditions study), Richard Mayeux and Nicole Schupf (Washington Heights Inwood and Columbia Aging Project).

COSMIC National Institutes of Health grant investigators: Perminder Sachdev (Scientia Professor of Neuropsychiatry; Co-Director, Centre for Healthy Brain Ageing, UNSW Sydney; Director, Neuropsychiatric Institute, Prince of Wales Hospital, Sydney, Australia), Mary Ganguli (Professor of Psychiatry, Neurology, and Epidemiology, University of Pittsburgh), Ronald Petersen (Professor of Neurology; Director, Mayo Clinic Alzheimer's Disease Research Center and the Mayo Clinic Study of Aging), Richard Lipton (Edwin S. Lowe Professor and Vice Chair of Neurology, Albert Einstein College of Medicine), Karen Ritchie (Professor and Director of the Neuropsychiatry Research Unit of the French National Institute of Research [INSERM U1061]), Ki Woong Kim (Professor of Brain and Cognitive Sciences, Director of National Institute of Dementia of Korea), Louisa Jorm (Director, Centre for Big Data Research in Health; Professor, Faculty of Medicine, UNSW Sydney, Australia), Henry Brodaty (Scientia Professor of Ageing & Mental Health; Co-Director, Centre for Healthy Brain Ageing, UNSW Sydney; Director, Dementia Collaborative Research Centre; Senior Consultant, Old Age Psychiatry, Prince of Wales Hospital).

Additional contributions

CHAS: CHAS is part of the 10/66 Dementia Research Group population-based research program in Cuba, a collaborative agreement between the London Institute of Psychiatry and the Medical University of Havana. We thank all the researchers who took part in this population-based study. EAS: We acknowledge the contributions of Molly Zimmerman, the EAS staff

for assistance with recruitment and clinical and neuropsychological assessments, and the participants who volunteered their time. HELIAD: We thank other co-investigators of the study including Euthimios Dardiotis, Mary Kosmidis, Pararskevi Sakka, and other contributors to the study, particularly Elena Margioti. Invece.Ab: We acknowledge the further study members Emanuele Tino Poloni, Simona Abbondanza, Mauro Colombo, Silvia Francesca Vitali, and Daniele Zaccaria, and the contributions of Gianluigi Forloni (“Mario Negri” Institute for Pharmacological Research, Milan, Italy) and Simona Villani (University of Pavia, Pavia, Italy), and are also grateful to the Federazione Alzheimer Italia (Milan, Italy), for supporting the study. MoVIES: We acknowledge the contributions of 1,681 study participants from the Monongahela Valley and of multiple MoVIES project personnel over the years. PATH: We thank the PATH investigators and team. SALSA: We acknowledge Anne Lee for her programming and statistical expertise. SGS: We acknowledge the further study members Yu Nofuji, Eri Shio-kawa, Takatori Honda, Sanmei Chen, and Yuka Haeuchi, and the other contributors to the study. SLASI: We gratefully acknowledge the help and support of the following voluntary welfare organizations: Geylang East Home for the Aged, Presbyterian Community Services, Thye Hua Kwan Moral Society (Moral Neighbourhood Links), Yuhua Neighbourhood Link, Henderson Senior Citizens’ Home, NTUC Eldercare Co-op, Thong Kheng Seniors Activity Centre (Queenstown Centre), Redhill Moral Seniors Activity Centre, SARAH Seniors Activity Centre, and Training and Research Academy at Jurong Point. Sydney MAS: We acknowledge the contributions of additional members of the MAS Team: Brian Draper, Kristan Kang, Karen Mathers, and Wei Wen. ZARADEMP: We acknowledge the contribution of the lay interviewers, senior medical students, and members of the ZARADEMP Workgroup who participated in the study.

Author Contributions

Conceptualization: Darren M. Lipnicki, Steve R. Makkar, John D. Crawford, Nicole A.

Kochan, Erico Castro-Costa, Carol Brayne, Juan J. Llibre-Rodriguez, Richard B. Lipton, Karen Ritchie, Nikolaos Scarmeas, Linda Lam, Antonio Guaita, Ki Woong Kim, Steffi G. Riedel-Heller, Sebastian Köhler, Mary Ganguli, Kaarin J. Anstey, Mary N. Haan, Shuzo Kumagai, Tze Pin Ng, Marcia Scazufca, Henry Brodaty, Kenichi Meguro, Antonio Lobo, Perminder S. Sachdev.

Data curation: Darren M. Lipnicki, Steve R. Makkar, John D. Crawford, Anbupalam Thalamuthu, Nicole A. Kochan, Maria Fernanda Lima-Costa, Erico Castro-Costa, Cleusa Pinheiro Ferri, Carol Brayne, Blossom Stephan, Juan J. Llibre-Rodriguez, Jorge J. Llibre-Guerra, Adolfo J. Valhuerdi-Cepero, Richard B. Lipton, Mindy J. Katz, Carol A. Derby, Karen Ritchie, Marie-Laure Ancelin, Isabelle Carrière, Nikolaos Scarmeas, Mary Yannakoulia, Georgios M. Hadjigeorgiou, Linda Lam, Wai-chi Chan, Ada Fung, Antonio Guaita, Roberta Vaccaro, Annalisa Davin, Ki Woong Kim, Ji Won Han, Seung Wan Suh, Steffi G. Riedel-Heller, Susanne Roehr, Alexander Pabst, Martin van Bortel, Sebastian Köhler, Kay Deckers, Mary Ganguli, Erin P. Jacobsen, Tiffany F. Hughes, Kaarin J. Anstey, Nicolas Cherbuin, Mary N. Haan, Allison E. Aiello, Kristina Dang, Shuzo Kumagai, Tao Chen, Kenji Narazaki, Tze Pin Ng, Qi Gao, Ma Shwe Zin Nyunt, Marcia Scazufca, Henry Brodaty, Katya Numbers, Julian N. Trollor, Kenichi Meguro, Satoshi Yamaguchi, Hiroshi Ishii, Antonio Lobo, Raul Lopez-Anton, Javier Santabárbara, Perminder S. Sachdev.

Formal analysis: Steve R. Makkar, Anbupalam Thalamuthu, Gordana Popovic.

Funding acquisition: Richard B. Lipton, Karen Ritchie, Ki Woong Kim, Mary Ganguli, Henry Brodaty, Perminder S. Sachdev.

Investigation: John D. Crawford, Nicole A. Kochan, Maria Fernanda Lima-Costa, Erico Castro-Costa, Cleusa Pinheiro Ferri, Carol Brayne, Blossom Stephan, Juan J. Llibre-Rodriguez, Jorge J. Llibre-Guerra, Adolfo J. Valhuerdi-Cepero, Richard B. Lipton, Mindy J. Katz, Carol A. Derby, Karen Ritchie, Marie-Laure Ancelin, Isabelle Carrière, Nikolaos Scarmeas, Mary Yannakouli, Georgios M. Hadjigeorgiou, Linda Lam, Wai-chi Chan, Ada Fung, Antonio Guaita, Roberta Vaccaro, Annalisa Davin, Ki Woong Kim, Ji Won Han, Seung Wan Suh, Steffi G. Riedel-Heller, Susanne Roehr, Alexander Pabst, Martin van Boxtel, Sebastian Köhler, Kay Deckers, Mary Ganguli, Erin P. Jacobsen, Tiffany F. Hughes, Kaarin J. Anstey, Nicolas Cherbuin, Mary N. Haan, Allison E. Aiello, Kristina Dang, Shuzo Kumagai, Tao Chen, Kenji Narazaki, Tze Pin Ng, Qi Gao, Ma Shwe Zin Nyunt, Marcia Scazufca, Henry Brodaty, Katya Numbers, Julian N. Trollor, Kenichi Meguro, Satoshi Yamaguchi, Hiroshi Ishii, Antonio Lobo, Raul Lopez-Anton, Javier Santabárbara, Perminder S. Sachdev.

Methodology: Yvonne Leung, Jessica W. Lo.

Project administration: Darren M. Lipnicki.

Supervision: Darren M. Lipnicki, Perminder S. Sachdev.

Visualization: Steve R. Makkar.

Writing – original draft: Darren M. Lipnicki, Steve R. Makkar, John D. Crawford, Perminder S. Sachdev.

Writing – review & editing: Darren M. Lipnicki, Steve R. Makkar, John D. Crawford, Anbupalam Thalamuthu, Nicole A. Kochan, Maria Fernanda Lima-Costa, Erico Castro-Costa, Cleusa Pinheiro Ferri, Carol Brayne, Blossom Stephan, Juan J. Llibre-Rodriguez, Jorge J. Llibre-Guerra, Adolfo J. Valhuerdi-Cepero, Richard B. Lipton, Mindy J. Katz, Carol A. Derby, Karen Ritchie, Marie-Laure Ancelin, Isabelle Carrière, Nikolaos Scarmeas, Mary Yannakouli, Georgios M. Hadjigeorgiou, Linda Lam, Wai-chi Chan, Ada Fung, Antonio Guaita, Roberta Vaccaro, Annalisa Davin, Ki Woong Kim, Ji Won Han, Seung Wan Suh, Steffi G. Riedel-Heller, Susanne Roehr, Alexander Pabst, Martin van Boxtel, Sebastian Köhler, Kay Deckers, Mary Ganguli, Erin P. Jacobsen, Tiffany F. Hughes, Kaarin J. Anstey, Nicolas Cherbuin, Mary N. Haan, Allison E. Aiello, Kristina Dang, Shuzo Kumagai, Tao Chen, Kenji Narazaki, Tze Pin Ng, Qi Gao, Ma Shwe Zin Nyunt, Marcia Scazufca, Henry Brodaty, Katya Numbers, Julian N. Trollor, Kenichi Meguro, Satoshi Yamaguchi, Hiroshi Ishii, Antonio Lobo, Raul Lopez-Anton, Javier Santabárbara, Yvonne Leung, Jessica W. Lo, Gordana Popovic, Perminder S. Sachdev.

References

1. Institute of Medicine. Cognitive aging: progress in understanding and opportunities for action. Washington (DC): National Academies Press; 2015. <https://doi.org/10.17226/21693> PMID: 25879131
2. Kane RL, Butler M, Fink HA, Brasure M, Davila H, Desai P, et al. Interventions to prevent age-related cognitive decline, mild cognitive impairment, and clinical Alzheimer's-type dementia. Rockville (MD): Agency for Healthcare Research and Quality; 2017. Report No. 17-EHC008-EF.
3. National Academies of Sciences, Engineering, and Medicine. Preventing cognitive decline and dementia: a way forward. Washington (DC): National Academies Press; 2017. <https://doi.org/10.17226/24782> PMID: 28650595
4. Riley RD, Lambert PC, Abo-Zaid G. Meta-analysis of individual participant data: rationale, conduct, and reporting. *BMJ*. 2010; 340:c221. <https://doi.org/10.1136/bmj.c221> PMID: 20139215
5. Lipnicki DM, Crawford JD, Dutta R, Thalamuthu A, Kochan NA, Andrews G, et al. Age-related cognitive decline and associations with sex, education and apolipoprotein E genotype across ethnocultural groups and geographic regions: a collaborative cohort study. *PLoS Med*. 2017; 14(3):e1002261. <https://doi.org/10.1371/journal.pmed.1002261> PMID: 28323832

6. Sachdev PS, Lipnicki DM, Kochan NA, Crawford JD, Rockwood K, Xiao S, et al. COSMIC (Cohort Studies of Memory in an International Consortium): an international consortium to identify risk and protective factors and biomarkers of cognitive ageing and dementia in diverse ethnic and sociocultural groups. *BMC Neurol.* 2013; 13:165. <https://doi.org/10.1186/1471-2377-13-165> PMID: 24195705
7. Lima-Costa MF, Firmo JO, Uchoa E. Cohort profile: the Bambui (Brazil) Cohort Study of Ageing. *Int J Epidemiol.* 2011; 40(4):862–7. <https://doi.org/10.1093/ije/dyq143> PMID: 20805109
8. Brayne C, McCracken C, Matthews FE. Cohort profile: the Medical Research Council Cognitive Function and Ageing Study (CFAS). *Int J Epidemiol.* 2006; 35(5):1140–5. <https://doi.org/10.1093/ije/dyl199> PMID: 16980700
9. Llibre-Rodríguez JJ, Valhuerdi-Cepero A, Lopez-Medina AM, Noriega-Fernandez L, Porto-Alvarez R, Guerra-Hernandez MA, et al. Cuba's Aging and Alzheimer Longitudinal Study. *MEDICC Rev.* 2017; 19(1):31–5. PMID: 28225543
10. Katz MJ, Lipton RB, Hall CB, Zimmerman ME, Sanders AE, Verghese J, et al. Age-specific and sex-specific prevalence and incidence of mild cognitive impairment, dementia, and Alzheimer dementia in blacks and whites: a report from the Einstein Aging Study. *Alzheimer Dis Assoc Disord.* 2012; 26(4):335–43. <https://doi.org/10.1097/WAD.0b013e31823dbcfc> PMID: 22156756
11. Ritchie K, Carriere I, Ritchie CW, Berr C, Artero S, Ancelin ML. Designing prevention programmes to reduce incidence of dementia: prospective cohort study of modifiable risk factors. *BMJ.* 2010; 341:c3885. <https://doi.org/10.1136/bmj.c3885> PMID: 20688841
12. Dardiotis E, Kosmidis MH, Yannakoulia M, Hadjigeorgiou GM, Scarmeas N. The Hellenic Longitudinal Investigation of Aging and Diet (HELIAID): rationale, study design, and cohort description. *Neuroepidemiology.* 2014; 43(1):9–14. <https://doi.org/10.1159/000362723> PMID: 24993387
13. Wong CH, Leung GT, Fung AW, Chan WC, Lam LC. Cognitive predictors for five-year conversion to dementia in community-dwelling Chinese older adults. *Int Psychogeriatr.* 2013; 25(7):1125–34. <https://doi.org/10.1017/S1041610213000161> PMID: 23544873
14. Guaita A, Colombo M, Vaccaro R, Fossi S, Vitali SF, Forloni G, et al. Brain aging and dementia during the transition from late adulthood to old age: design and methodology of the “Invece.Ab” population-based study. *BMC Geriatr.* 2013; 13:98. <https://doi.org/10.1186/1471-2318-13-98> PMID: 24063518
15. Han JW, Kim TH, Kwak KP, Kim K, Kim BJ, Kim SG, et al. Overview of the Korean Longitudinal Study on Cognitive Aging and Dementia. *Psychiatry Investig.* 2018; 15(8):767–74. <https://doi.org/10.30773/pi.2018.06.02> PMID: 30086611
16. Riedel-Heller SG, Busse A, Aurich C, Matschinger H, Angermeyer MC. Prevalence of dementia according to DSM-III-R and ICD-10: results of the Leipzig Longitudinal Study of the Aged (LEILA75+) Part 1. *Br J Psychiatry.* 2001; 179:250–4. <https://doi.org/10.1192/bjp.179.3.250> PMID: 11532803
17. Jolles J, Houx PJ, Van Boxtel MP, Ponds RW. *The Maastricht Aging Study: determinants of cognitive aging.* Maastricht: Neuropsych Publishers; 1995.
18. Ganguli M, Dodge HH, Chen P, Belle S, DeKosky ST. Ten-year incidence of dementia in a rural elderly US community population: the MoVIES Project. *Neurology.* 2000; 54(5):1109–16. <https://doi.org/10.1212/wnl.54.5.1109> PMID: 10720283
19. Anstey KJ, Christensen H, Butterworth P, Eastaer S, Mackinnon A, Jacomb T, et al. Cohort profile: the PATH through life project. *Int J Epidemiol.* 2012; 41(4):951–60. <https://doi.org/10.1093/ije/dyr025> PMID: 21349904
20. Haan MN, Mungas DM, Gonzalez HM, Ortiz TA, Acharya A, Jagust WJ. Prevalence of dementia in older Latinos: the influence of type 2 diabetes mellitus, stroke and genetic factors. *J Am Geriatr Soc.* 2003; 51(2):169–77. PMID: 12558712
21. Sczufca M, Menezes PR, Araya R, Di Rienzo VD, Almeida OP, Gunnell D, et al. Risk factors across the life course and dementia in a Brazilian population: results from the Sao Paulo Ageing & Health Study (SPAH). *Int J Epidemiol.* 2008; 37(4):879–90. <https://doi.org/10.1093/ije/dyn125> PMID: 18583392
22. Narazaki K, Nofuji Y, Honda T, Matsuo E, Yonemoto K, Kumagai S. Normative data for the Montreal Cognitive Assessment in a Japanese community-dwelling older population. *Neuroepidemiology.* 2013; 40(1):23–9. <https://doi.org/10.1159/000339753> PMID: 23075757
23. Feng L, Gwee X, Kua EH, Ng TP. Cognitive function and tea consumption in community dwelling older Chinese in Singapore. *J Nutr Health Aging.* 2010; 14(6):433–8. PMID: 20617284
24. Sachdev PS, Brodaty H, Reppermund S, Kochan NA, Trollor JN, Draper B, et al. The Sydney Memory and Ageing Study (MAS): methodology and baseline medical and neuropsychiatric characteristics of an elderly epidemiological non-demented cohort of Australians aged 70–90 years. *Int Psychogeriatr.* 2010; 22(8):1248–64. <https://doi.org/10.1017/S1041610210001067> PMID: 20637138

25. Meguro K, Ishii H, Kasuya M, Akanuma K, Meguro M, Kasai M, et al. Incidence of dementia and associated risk factors in Japan: the Osaki-Tajiri Project. *J Neurol Sci*. 2007; 260(1–2):175–82. <https://doi.org/10.1016/j.jns.2007.04.051> PMID: 17553526
26. Lobo A, Saz P, Marcos G, D a J, De-la-C amara C, Ventura T, et al. The ZARADEMP Project on the incidence, prevalence and risk factors of dementia (and depression) in the elderly community: II. Methods and first results. *Eur J Psychiatry*. 2005; 19:40–54.
27. Folstein MF, Folstein SE, McHugh PR. “Mini-mental state”. A practical method for grading the cognitive state of patients for the clinician. *J Psychiatr Res*. 1975; 12(3):189–98. PMID: 1202204
28. Griffith L, van den Heuvel E, Fortier I, Hofer S, Raina P, Sohel N, et al. Harmonization of cognitive measures in individual participant data and aggregate data meta-analysis. Methods research report. Rockville (MD): Agency for Healthcare Research and Quality; 2013. AHRQ Publication No. 13-EHC040-EF.
29. Singer JB, Willet JB. *Applied longitudinal data analysis*. New York: Oxford University Press; 2003.
30. Sturman MT, de Leon CF, Bienias JL, Morris MC, Wilson RS, Evans DA. Body mass index and cognitive decline in a biracial community population. *Neurology*. 2008; 70(5):360–7. <https://doi.org/10.1212/01.wnl.0000285081.04409.bb> PMID: 17881716
31. Wilson RS, Hebert LE, Scherr PA, Barnes LL, Mendes de Leon CF, Evans DA. Educational attainment and cognitive decline in old age. *Neurology*. 2009; 72(5):460–5. <https://doi.org/10.1212/01.wnl.0000341782.71418.6c> PMID: 19188578
32. Higgins JPT, Green S, editors. *Cochrane handbook for systematic reviews of interventions*. Version 5.1.0. Cochrane Collaboration; 2011.
33. Prince M, Wimo A, Guerchet M, Ali GC, Wu YT, Prina M. *World Alzheimer report 2015: the global impact of dementia. An analysis of prevalence, incidence, cost and trends*. London: Alzheimer’s Disease International; 2015.
34. Luck T, Lupp M, Briel S, Riedel-Heller SG. Incidence of mild cognitive impairment: a systematic review. *Dement Geriatr Cogn Disord*. 2010; 29(2):164–75. <https://doi.org/10.1159/000272424> PMID: 20150735
35. Corder EH, Saunders AM, Strittmatter WJ, Schmechel DE, Gaskell PC, Small GW, et al. Gene dose of apolipoprotein E type 4 allele and the risk of Alzheimer’s disease in late onset families. *Science*. 1993; 261(5123):921–3. <https://doi.org/10.1126/science.8346443> PMID: 8346443
36. Bangen KJ, Beiser A, Delano-Wood L, Nation DA, Lamar M, Libon DJ, et al. APOE genotype modifies the relationship between midlife vascular risk factors and later cognitive decline. *J Stroke Cerebrovasc Dis*. 2013; 22(8):1361–9. <https://doi.org/10.1016/j.jstrokecerebrovasdis.2013.03.013> PMID: 23601373
37. Farrer LA, Cupples LA, Haines JL, Hyman B, Kukull WA, Mayeux R, et al. Effects of age, sex, and ethnicity on the association between apolipoprotein E genotype and Alzheimer disease. A meta-analysis. APOE and Alzheimer Disease Meta Analysis Consortium. *JAMA*. 1997; 278(16):1349–56. PMID: 9343467
38. Moheet A, Mangia S, Seaquist ER. Impact of diabetes on cognitive function and brain structure. *Ann N Y Acad Sci*. 2015; 1353:60–71. <https://doi.org/10.1111/nyas.12807> PMID: 26132277
39. Ninomiya T. Diabetes mellitus and dementia. *Curr Diab Rep*. 2014; 14(5):487. <https://doi.org/10.1007/s11892-014-0487-z> PMID: 24623199
40. Bennett S, Thomas AJ. Depression and dementia: cause, consequence or coincidence? *Maturitas*. 2014; 79(2):184–90. <https://doi.org/10.1016/j.maturitas.2014.05.009> PMID: 24931304
41. Tang EY, Amiesimaka O, Harrison SL, Green E, Price C, Robinson L, et al. Longitudinal effect of stroke on cognition: a systematic review. *J Am Heart Assoc*. 2018; 7(2):e006443. <https://doi.org/10.1161/JAHA.117.006443> PMID: 29335318
42. Baumgart M, Snyder HM, Carrillo MC, Fazio S, Kim H, Johns H. Summary of the evidence on modifiable risk factors for cognitive decline and dementia: a population-based perspective. *Alzheimers Dement*. 2015; 11(6):718–26. <https://doi.org/10.1016/j.jalz.2015.05.016> PMID: 26045020
43. Momtaz YA, Ibrahim R, Hamid TA, Chai ST. Smoking and cognitive impairment among older persons in Malaysia. *Am J Alzheimers Dis Other Dement*. 2015; 30(4):405–11. <https://doi.org/10.1177/1533317514552318> PMID: 25260596
44. Mons U, Schottker B, Muller H, Kliegel M, Brenner H. History of lifetime smoking, smoking cessation and cognitive function in the elderly population. *Eur J Epidemiol*. 2013; 28(10):823–31. <https://doi.org/10.1007/s10654-013-9840-9> PMID: 23990211
45. Cagney KA, Lauderdale DS. Education, wealth, and cognitive function in later life. *J Gerontol B Psychol Sci Soc Sci*. 2002; 57(2):P163–72. <https://doi.org/10.1093/geronb/57.2.p163> PMID: 11867664
46. Sharp ES, Gatz M. Relationship between education and dementia: an updated systematic review. *Alzheimer Dis Assoc Disord*. 2011; 25(4):289–304. <https://doi.org/10.1097/WAD.0b013e318211c83c> PMID: 21750453

47. Phillips C. Lifestyle modulators of neuroplasticity: how physical activity, mental engagement, and diet promote cognitive health during aging. *Neural Plast.* 2017; 2017:3589271. <https://doi.org/10.1155/2017/3589271> PMID: 28695017
48. Stefanidis KB, Askew CD, Greaves K, Summers MJ. The effect of non-stroke cardiovascular disease states on risk for cognitive decline and dementia: a systematic and meta-analytic review. *Neuropsychol Rev.* 2018; 28(1):1–15. <https://doi.org/10.1007/s11065-017-9359-z> PMID: 28856507
49. Schievink SHJ, van Boxtel MPJ, Deckers K, van Oostenbrugge RJ, Verhey FRJ, Kohler S. Cognitive changes in prevalent and incident cardiovascular disease: a 12-year follow-up in the Maastricht Aging Study (MAAS). *Eur Heart J.* 2017 Jul 22. <https://doi.org/10.1093/eurheartj/ehx365> PMID: 29020327
50. Peters R, Collerton J, Granic A, Davies K, Kirkwood T, Jagger C. Antihypertensive drug use and risk of cognitive decline in the very old: an observational study—the Newcastle 85+ Study. *J Hypertens.* 2015; 33(10):2156–64. <https://doi.org/10.1097/HJH.0000000000000653> PMID: 26237554
51. Mielke MM, Zandi PP, Sjogren M, Gustafson D, Ostling S, Steen B, et al. High total cholesterol levels in late life associated with a reduced risk of dementia. *Neurology.* 2005; 64(10):1689–95. <https://doi.org/10.1212/01.WNL.0000161870.78572.A5> PMID: 15911792
52. van den Kommer TN, Dik MG, Comijs HC, Fassbender K, Lutjohann D, Jonker C. Total cholesterol and oxysterols: early markers for cognitive decline in elderly? *Neurobiol Aging.* 2009; 30(4):534–45. <https://doi.org/10.1016/j.neurobiolaging.2007.08.005> PMID: 17888546
53. Hui DS, Morley JE, Mikolajczak PC, Lee R. Atrial fibrillation: a major risk factor for cognitive decline. *Am Heart J.* 2015; 169(4):448–56. <https://doi.org/10.1016/j.ahj.2014.12.015> PMID: 25819850
54. Singh-Manoux A, Fayosse A, Sabia S, Canonico M, Bobak M, Elbaz A, et al. Atrial fibrillation as a risk factor for cognitive decline and dementia. *Eur Heart J.* 2017; 38(34):2612–8. <https://doi.org/10.1093/eurheartj/ehx208> PMID: 28460139
55. Zeng D, Jiang C, Su C, Tan Y, Wu J. Anticoagulation in atrial fibrillation and cognitive decline: a systematic review and meta-analysis. *Medicine (Baltimore).* 2019; 98(7):e14499.
56. Ancelin ML, Ritchie K. Lifelong endocrine fluctuations and related cognitive disorders. *Curr Pharm Des.* 2005; 11(32):4229–52. PMID: 16375742
57. Sundermann EE, Maki PM, Rubin LH, Lipton RB, Landau S, Biegon A, et al. Female advantage in verbal memory: evidence of sex-specific cognitive reserve. *Neurology.* 2016; 87(18):1916–24. <https://doi.org/10.1212/WNL.0000000000003288> PMID: 27708128
58. Herlitz A, Rehnman J. Sex differences in episodic memory. *Curr Dir Psychol Sci.* 2008; 17(1):52–6.
59. Lei X, Hu Y, McArdle JJ, Smith JP, Zhao Y. Gender differences in cognition among older adults in China. *J Hum Resour.* 2012; 47(4):951–71. PMID: 24347682
60. Zhang J, Zhou W, Wang L, Zhang X, Harvard Aging Brain Study. Gender differences of neuropsychological profiles in cognitively normal older people without amyloid pathology. *Compr Psychiatry.* 2017; 75:22–6. <https://doi.org/10.1016/j.comppsy.2017.02.008> PMID: 28285181
61. Marioni RE, Campbell A, Scotland G, Hayward C, Porteous DJ, Deary IJ. Differential effects of the APOE e4 allele on different domains of cognitive ability across the life-course. *Eur J Hum Genet.* 2016; 24(6):919–23. <https://doi.org/10.1038/ejhg.2015.210> PMID: 26395552
62. Crean S, Ward A, Mercaldi CJ, Collins JM, Cook MN, Baker NL, et al. Apolipoprotein E epsilon4 prevalence in Alzheimer's disease patients varies across global populations: a systematic literature review and meta-analysis. *Dement Geriatr Cogn Disord.* 2011; 31(1):20–30. <https://doi.org/10.1159/000321984> PMID: 21124030
63. Deelen J, Beekman M, Uh HW, Helmer Q, Kuningas M, Christiansen L, et al. Genome-wide association study identifies a single major locus contributing to survival into old age; the APOE locus revisited. *Aging Cell.* 2011; 10(4):686–98. <https://doi.org/10.1111/j.1474-9726.2011.00705.x> PMID: 21418511
64. Sargent-Cox K, Cherbuin N, Sachdev P, Anstey KJ. Subjective health and memory predictors of mild cognitive disorders and cognitive decline in ageing: the Personality and Total Health (PATH) through Life Study. *Dement Geriatr Cogn Disord.* 2011; 31(1):45–52. <https://doi.org/10.1159/000322373> PMID: 21150203
65. Kandula NR, Lauderdale DS, Baker DW. Differences in self-reported health among Asians, Latinos, and non-Hispanic whites: the role of language and nativity. *Ann Epidemiol.* 2007; 17(3):191–8. <https://doi.org/10.1016/j.annepidem.2006.10.005> PMID: 17320786
66. Ma RC, Chan JC. Type 2 diabetes in East Asians: similarities and differences with populations in Europe and the United States. *Ann N Y Acad Sci.* 2013; 1281:64–91. <https://doi.org/10.1111/nyas.12098> PMID: 23551121
67. Ma C, Yin Z, Zhu P, Luo J, Shi X, Gao X. Blood cholesterol in late-life and cognitive decline: a longitudinal study of the Chinese elderly. *Mol Neurodegener.* 2017; 12(1):24. <https://doi.org/10.1186/s13024-017-0167-y> PMID: 28270179

68. Bhatt DL, Steg PG, Ohman EM, Hirsch AT, Ikeda Y, Mas JL, et al. International prevalence, recognition, and treatment of cardiovascular risk factors in outpatients with atherothrombosis. *JAMA*. 2006; 295(2):180–9. <https://doi.org/10.1001/jama.295.2.180> PMID: 16403930
69. Mungas D, Gavett B, Fletcher E, Farias ST, DeCarli C, Reed B. Education amplifies brain atrophy effect on cognitive decline: implications for cognitive reserve. *Neurobiol Aging*. 2018; 68:142–50. <https://doi.org/10.1016/j.neurobiolaging.2018.04.002> PMID: 29798764
70. Piccinin AM, Muniz-Terrera G, Clouston S, Reynolds CA, Thorvaldsson V, Deary IJ, et al. Coordinated analysis of age, sex, and education effects on change in MMSE scores. *J Gerontol B Psychol Sci Soc Sci*. 2013; 68(3):374–90. <https://doi.org/10.1093/geronb/gbs077> PMID: 23033357
71. Livingston G, Sommerlad A, Orgeta V, Costafreda SG, Huntley J, Ames D, et al. Dementia prevention, intervention, and care. *Lancet*. 2017; 390(10113):2673–734. [https://doi.org/10.1016/S0140-6736\(17\)31363-6](https://doi.org/10.1016/S0140-6736(17)31363-6) PMID: 28735855
72. Anstey KJ, Ashby-Mitchell K, Peters R. Updating the evidence on the association between serum cholesterol and risk of late-life dementia: review and meta-analysis. *J Alzheimers Dis*. 2017; 56(1):215–28. <https://doi.org/10.3233/JAD-160826> PMID: 27911314
73. Spencer RJ, Wendell CR, Giggey PP, Katzel LI, Lefkowitz DM, Siegel EL, et al. Psychometric limitations of the mini-mental state examination among nondemented older adults: an evaluation of neurocognitive and magnetic resonance imaging correlates. *Exp Aging Res*. 2013; 39(4):382–97. <https://doi.org/10.1080/0361073X.2013.808109> PMID: 23875837
74. Mukadam N, Sommerlad A, Huntley J, Livingston G. Population attributable fractions for risk factors for dementia in low-income and middle-income countries: an analysis using cross-sectional survey data. *Lancet Glob Health*. 2019; 7(5):e596–603. [https://doi.org/10.1016/S2214-109X\(19\)30074-9](https://doi.org/10.1016/S2214-109X(19)30074-9) PMID: 31000129
75. Ferri CP, Jacob KS. Dementia in low-income and middle-income countries: different realities mandate tailored solutions. *PLoS Med*. 2017; 14(3):e1002271. <https://doi.org/10.1371/journal.pmed.1002271> PMID: 28350797