



THE UNIVERSITY *of* EDINBURGH

Edinburgh Research Explorer

Genome-wide association study identifies a variant in HDAC9 associated with large vessel ischemic stroke

Citation for published version:

International Stroke Genetics Consortium (ISGC), Bellenguez, C, Bevan, S, Gschwendtner, A, Spencer, CCA, Burgess, AI, Pirinen, M, Jackson, C, Traylor, M, Strange, A, Su, Z, Band, G, Syme, PD, Malik, R, Pera, J, Norrving, B, Lemmens, R, Freeman, C, Schanz, R, James, T, Poole, D, Murphy, L, Segal, H, Cortellini, L, Cheng, Y-C, Woo, D, Nalls, MA, Müller-Myhsok, B, Meisinger, C, Seedorf, U, Ross-Adams, H, Boonen, S, Wloch-Kopeck, D, Valant, V, Slark, J, Furie, K, Delavaran, H, Langford, C, Deloukas, P, Edkins, S, Hunt, S, Gray, E, Dronov, S, Peltonen, L, Gretarsdottir, S, Thorleifsson, G, Thorsteinsdottir, U, Stefansson, K, Boncoraglio, GB, Parati, EA & Sudlow, C 2012, 'Genome-wide association study identifies a variant in HDAC9 associated with large vessel ischemic stroke', *Nature Genetics*, vol. 44, no. 3, pp. 328-33. <https://doi.org/10.1038/ng.1081>

Digital Object Identifier (DOI):

[10.1038/ng.1081](https://doi.org/10.1038/ng.1081)

Link:

[Link to publication record in Edinburgh Research Explorer](#)

Document Version:

Peer reviewed version

Published In:

Nature Genetics

Publisher Rights Statement:

© 2012 Nature Publishing Group, a division of Macmillan Publishers Limited. All Rights Reserved.

General rights

Copyright for the publications made accessible via the Edinburgh Research Explorer is retained by the author(s) and / or other copyright owners and it is a condition of accessing these publications that users recognise and abide by the legal requirements associated with these rights.

Take down policy

The University of Edinburgh has made every reasonable effort to ensure that Edinburgh Research Explorer content complies with UK legislation. If you believe that the public display of this file breaches copyright please contact openaccess@ed.ac.uk providing details, and we will remove access to the work immediately and investigate your claim.



Published in final edited form as:

Nat Genet. ; 44(3): 328–333. doi:10.1038/ng.1081.

Genome-wide association study identifies a variant in *HDAC9* associated with large vessel ischemic stroke

International Stroke Genetics Consortium (ISGC) and Wellcome Trust Case Control Consortium 2 (WTCCC2)*

Abstract

Genetic factors have been implicated in stroke risk but few replicated associations have been reported. We conducted a genome-wide association study (GWAS) in ischemic stroke and its subtypes in 3,548 cases and 5,972 controls, all of European ancestry. Replication of potential signals was performed in 5,859 cases and 6,281 controls. We replicated reported associations between variants close to *PITX2* and *ZFHX3* with cardioembolic stroke, and a 9p21 locus with large vessel stroke. We identified a novel association for a SNP within the histone deacetylase 9 (*HDAC9*) gene on chromosome 7p21.1 which was associated with large vessel stroke including additional replication in a further 735 cases and 28583 controls (rs11984041, combined $P = 1.87 \times 10^{-11}$, OR=1.42 (95% CI) 1.28-1.57). All four loci exhibit evidence for heterogeneity of effect across the stroke subtypes, with some, and possibly all, affecting risk for only one subtype. This suggests differing genetic architectures for different stroke subtypes.

Cerebrovascular disease (stroke) is one of the three most common causes of death and the major cause of adult chronic disability (1). Stroke represents an increasing health problem throughout the world as the proportion of elderly increases, and is an important cause of dementia and age-related cognitive decline. While conventional risk factors such as hypertension account for a significant proportion of stroke risk, much remains unexplained (2). Twin and family history studies suggest genetic factors are responsible for some of this unexplained risk (3). Stroke is a syndrome rather than a single disease, and subtypes of stroke are caused by a number of different specific disease processes. About 80% of stroke is ischemic; the three most common ischemic stroke subtypes are large vessel, cardioembolic and small vessel (lacunar) stroke. Genetic epidemiological studies show heterogeneity between stroke subtypes, the large vessel subtype being more strongly associated with family history (4). SNPs associated with atrial fibrillation were found only to be significantly associated with cardioembolic stroke (5,6), and a 9p21 variant initially

Corresponding Authors: Hugh S Markus, Stroke and Dementia Research Centre, Clinical Sciences, St George's University of London, London, UK, SW17 0RE, hmarkus@sgul.ac.uk; Peter Donnelly, Wellcome Trust Centre for Human Genetics, Roosevelt Drive, Oxford, OX3 7BN, UK, peter.donnelly@well.ox.ac.uk.

*A full list of authors appears at the end of this article. A full list of members of WTCCC2 appears in the Supplementary Material.

Author Contributions

SBe, CCAS, PS, MF, CLMS, PMR, MD, PDo and HSM designed the experiment. SBe, AG, AIB, CAJ, TJ, DP, LM, HS, CLMS, PMR, MD and HSM were responsible for collecting and phenotyping discovery samples.

Replication sample or replication data were provided PDS, JP, BN, RL, RS, LC, Y-CC, DW, MAN, US, HRA, SBo, DW-K, VV, JS, KF, HD, SG, GT, UT, KS, GBB, EAP, JA, EH, CL, M-GF, AH, BBW, SJK, BJM, BK, JFM, VT, AL, MJM, AS, MW, JR, PS. Genotyping, quality control and informatics were conducted by CB, SBe, CCAS, MP, MT, AS, ZS, GB, CF, RM, BM-M, CM, CL, SE, SH, EG, SD, AG, MF, PD, HSM.

Genetic and statistical analysis was performed by CB, SB, CCAS, MP, AS, ZS, GB, CF, MT, RM, AH, MF, and PDo.

The WTCCC2 management committee (PDo (Chair), LP (Deputy Chair), JMB, EB, MAB, JPC, AC, PDe, AD, JJ, HSM, CGM, CNAP, RP, AR, SJS, RCT, ACV, NWW) monitored the execution of the study. CB, SBe, CCAS, MP, MF, PD, HSM contributed to writing the first draft of the manuscript. All authors reviewed and commented on the final manuscript.

No financial competing interests

associated with coronary artery disease and atherosclerosis only associated with large vessel stroke (7). This suggests that different genetic variants can predispose to different subtypes of ischemic stroke.

To date there have been few genome wide association studies (GWAS) in ischemic stroke and few replicable associations have been identified (8). To further understand the genetic basis of ischemic stroke, we undertook a GWAS as part of the Wellcome Trust Case Control Consortium 2 (WTCCC2). We hypothesised that associations might be present only with specific stroke subtypes. To investigate this, cases were classified into stroke subtypes according to the pathophysiological TOAST classification (9), using clinical assessment as well as brain and vascular imaging where available (see Online Methods). Association analyses were performed on all ischemic stroke combined (including individuals not further classified by stroke subtype), and also the three major stroke subtypes: large vessel, small vessel and cardioembolic stroke. Discovery samples were of European ancestry and were genotyped on Illumina arrays (see Online Methods). Following quality control, the discovery set consisted of 3,548 cases (2,374 British, 1,174 German) and 5,972 controls (5,175 British WTCCC2 common controls, and 797 German controls) genotyped on an overlapping set of 495,851 autosomal SNPs (Table 1 and Online Methods). Within the British and German data, cases and controls were well matched for ancestry (see Online Methods and Supplementary Figure 1). We therefore performed association analysis separately in the two groups and combined them using a fixed effect meta-analysis approach. A two-stage replication study was performed in 5,859 cases (3,863 European, 1,996 American) and 6,281 controls (4,554 European, 1,727 American) all of self-reported European ancestry. (Table 1 and Online Methods). Full details of the cohorts are available in the Supplementary material. and Supplementary Table 1.

Table 2 shows results at previously reported loci and Figure 1 shows the association analysis results across the autosomes. We replicated an association between cardioembolic stroke and variants close to the *PITX2* gene and also a SNP in the *ZFHX3* gene, both of which were initially associated with atrial fibrillation, a well recognised risk factor for stroke (5,6,10). We also replicated a previously reported association between large vessel stroke and the 9p21 region (7). As we, and others, already reported (11,12), we did not confirm the previously published association between all stroke and variants in the 12p13 region (13, 14).

Thirty-eight previously unreported loci showed potential association for all stroke or one of the stroke subtypes in the discovery samples, and we further investigated these loci in the European replication samples by genotyping 43 SNPs covering these loci as well as 7 SNPs to cover the previously reported loci (Supplementary Table 2). Thirteen of these previously unreported loci and the previously reported loci were taken forward to replication in the American samples with genotyping of 20 SNPs covering these regions (Supplementary Table 3). Most replication samples were genotyped using Sequenom assays; for those previously typed with GWAS chips we used genotype imputation where the SNP was not directly typed (see Supplementary Tables 2 and 3 and Online Methods). A SNP at chromosome 7p21.1 (rs11984041) showed evidence of association with large vessel stroke in the discovery data ($P=1.07 \times 10^{-5}$) and in the joint European and US replication data in the same direction (one-sided $P=7.9 \times 10^{-5}$). As a further check, we investigated this SNP in three further collections of large vessel cases and matched controls (735 cases, 28583 controls in total), which we refer to as Stage 3 replication (see Online Methods for details). The Stage 3 data also showed evidence in the same direction (one-sided $P=2.25 \times 10^{-4}$). Together, the combined discovery and three-stage replication data provide strong evidence for association ($P=1.87 \times 10^{-11}$) and suggest each copy of the A allele increases risk of large vessel stroke by approximately 1.4 fold (Table 2 and Figure 2). This SNP is within the final

intron of the gene *HDAC9*. The risk allele (A) frequency was 9.29% and 8.78% in the UK and German discovery controls respectively.

Standard statistical tests of association between rs11984041 and each of cardioembolic and small vessel stroke are not significant (discovery plus 2-stage replication $p = 0.12$, OR = 1.10, 95% CI = 0.98 – 1.23, and $p = 0.06$, OR = 1.13, 95% CI = 1.00 – 1.28 respectively). A non-significant result could simply be due to a lack of power: lack of significance in itself cannot rule out an effect in these subtypes. We investigated this potential genetic heterogeneity further by formally comparing different statistical models for the effect of the SNP on the different stroke subtypes. The models we compared were: (i) a model in which the variant has no effect on risk for any of the subtypes (“null” model); (ii) a model in which the SNP has the same effect on each subtype (“same effects” model); (iii) three models, in each of which the SNP has an effect on one subtype, and no effect for the other two subtypes (“LVD”, “SVD” and “CE” models respectively for the effect only in large vessel, small vessel, and cardioembolic stroke); and (iv) a “correlated effects” model allowing different, but correlated, effects for each subtype. We undertook the model comparison in a Bayesian statistical framework (see Online Methods for details), for our new association around *HDAC9*, as well as for the previously reported associations we confirmed as listed in Table 2. The results, based on the discovery and the first two stages of the replication, are shown in Figure 3.

For rs11984041 at *HDAC9* there is very strong evidence against the null model and both the SVD and CE models (unsurprisingly given we ascertained this SNP on the basis of evidence for an effect in LVD) and also strong evidence against the model in which the SNP has the same effect in each subtype, thus demonstrating genetic heterogeneity across stroke subtypes at this SNP. The greatest posterior weight rests on the model in which there is only an effect for large vessel disease, with some weight on the correlated effects model, and in this model the posterior distributions on effect size for SVD and CE stroke are concentrated on much smaller effect sizes than for LVD.

In our data, heterogeneity is also seen at rs2383207 in the 9p21 region, a locus associated with heart disease and related phenotypes, and previously associated with large vessel stroke. Most support is for the model in which the effect sizes for the three stroke subtypes are correlated but there is also substantial weight on the model in which there is only an effect for large vessel stroke. The same analyses in our data for the top SNPs in the regions previously associated with cardioembolic stroke (*PITX2* region, rs1906599, and *ZFHX3* regions, rs12932445) show strong support for the model in which these SNPs only affect risk for cardioembolic stroke. Together these analyses provide compelling evidence for heterogeneity of genetic effects between stroke subtypes.

The association with rs11984041, in the gene *HDAC9*, implicates a novel region of the genome in an individual’s susceptibility to stroke. Any association with stroke could be mediated via associations with intermediate cardiovascular risk factors that themselves increase large vessel stroke risk. Our study design does not allow a direct assessment of this, as such risk factors were not available for control individuals. However, to date no associations have been reported between rs11984041 or correlated SNPs and hypertension (15), hyperlipidaemia (16), or diabetes (17) from large-scale GWAS of these risk factors.

Association of genetic variants surrounding *HDAC9* are represented in Figure 4. All variants showing an association signal reside within a peak between two recombination hotspots and encompass the tail end of *HDAC9*. The downstream genes *TWIST1* and *FERD3L* are physically relatively close to the identified peak and cannot be excluded as possible mechanisms via which genetic variants may exert *cis*-effects on the large vessel stroke

phenotype. *HDAC9* is a member of a large family of genes that encode proteins responsible for deacetylation of histones, and therefore regulation of chromatin structure and gene transcription (18). *HDAC9* is ubiquitously expressed, with high levels of expression in cardiac tissue, muscle and brain (19). Although known as histone deacetylases, these proteins also act on other substrates (20) and lead to both upregulation and downregulation of genes (21).

The mechanism by which variants in the *HDAC9* region increase large vessel stroke risk is not immediately clear. The specific association with this stroke subtype would be consistent with the association acting via accelerating atherosclerosis. The *HDAC9* protein inhibits myogenesis and is involved in heart development (19) although deleterious effects on systemic arteries have not yet been reported. Alternatively it could increase risk by altering brain ischaemic responses and therefore have effects on neuronal survival. The protein has been shown to protect neurons from apoptosis, both by inhibiting JUN phosphorylation by MAPK10 and by repressing JUN transcription. HDAC inhibitors have been postulated as a treatment for stroke (22).

It is not uninformative that a large GWAS (~3,500 cases, ~6,000 controls) failed to find any novel associations for the combined phenotype of ischemic stroke. It may be that the genetic architecture of the disease involves fewer variants of more moderate effect than many other diseases, and/or that these happen not to be well tagged by the Illumina 660-W chip used in the study. On the other hand, as our data demonstrate, all the known loci exhibit genetic heterogeneity across the stroke subtypes, with at least some, and possibly all, affecting only a single subtype. This supports the possibility that distinct subtypes of the disease have differing genetic architectures. However this is based on only four loci and does not exclude the possibility that future loci associated with stroke may predispose to all ischaemic stroke. Clinical classification of disease into subtypes is not perfect. Since errors in classification would reduce power to detect heterogeneity, our findings of homogeneity within classes indirectly reinforces the value of current classification methods. Because GWAS studies to date, including the one reported here, have had relatively small sample sizes for each disease subtype (and hence are underpowered for common variants of small effect), it remains possible, and indeed *a priori* likely, that the range of effect sizes for each subtype will be similar to those for other common diseases. This suggests that future genetic studies should study adequate sample sizes for particular subtypes of ischaemic stroke, rather than for the disease as a whole.

In summary, in this largest GWAS study of ischemic stroke conducted to date, we identified a novel association with the *HDAC9* gene region in large vessel stroke with an estimated effect size which is at the larger end for GWAS loci (OR 1.38, 95% CI 1.22-1.57 from replication data). We also replicated three other known loci, and showed genetic heterogeneity across subtypes of the disease for all four stroke loci. This genetic heterogeneity seems likely to reflect heterogeneity in the underlying pathogenic mechanisms, and reinforces the need for separate consideration of stroke subtypes in the research and clinical context.

Supplementary Material

Refer to Web version on PubMed Central for supplementary material.

Acknowledgments

The principal funding for this study was provided by the Wellcome Trust, as part of the Wellcome Trust Case Control Consortium 2 project (085475/B/08/Z and 085475/Z/08/Z and WT084724MA). For details of other funding support see Supplementary Material.

We thank S. Bertrand, J. Bryant, S.L. Clark, J.S. Conquer, T. Dibling, J.C. Eldred, S. Gamble, C. Hind, M.L. Perez, C.R. Stribling, S. Taylor and A. Wilk of the Wellcome Trust Sanger Institute's Sample and Genotyping Facilities for technical assistance. We acknowledge use of the British 1958 Birth Cohort DNA collection, funded by the Medical Research Council grant G0000934 and the Wellcome Trust grant 068545/Z/02, and of the UK National Blood Service controls funded by the Wellcome Trust. We thank W. Bodmer and B. Winney for use of the People of the British Isles DNA collection, which was funded by the Wellcome Trust.

We thank the following who contributed to collection, phenotyping, sample processing and data management for the different cohorts. Oxford Vascular Study: Annette Burgess, Anila Syed, Nicola Paul. Edinburgh Stroke Study: Martin Dennis, Peter Sandercock, Charles Warlow, Simon Hart, Sarah Keir, Joanna Wardlaw, Andrew Farrall, Gillian Potter, Aidan Hutchison, Mike McDowall. Aberdeen: Alireza Pasdar, Helen Clinkscale. Glasgow: Peter Higgins. ISGS: T. G. Brott, R. D. Brown, S. Silliman, M. Frankel, D. Case, S. Rich, J. Hardy, A. Singleton. GEOS: Mary J Sparks, Kathy Ryan, John Cole, Marcella Wozniak, Barney Stern, Robert Wityk, Constance Johnson, David Buchholz. Australian Stroke Genetics Collaborative membership: Jane Maguire, Simon Koblar, Jonathan Gollidge, Jonathan Surm, Graeme Hankey, Jim Jannes, Martin Lewis, Rodney Scott, Lisa Lincz; Pablo Moscato; Ross Baker.

APPENDIX

Methods

Study subjects

All subjects were of self-reported European ancestry. Patients were classified into mutually exclusive etiologic subtypes according to the Trial of Org 10172 in Acute Stroke Treatment (TOAST) (9). TOAST classification was performed in all stroke cases. The TOAST system has a category of “etiology unknown” which includes cases in which no cause has been found due to insufficient investigation, as well as cases where no cause is found despite full investigation. This “unknown” group was not analysed in subtype analyses described in this paper which focussed only in those patients where there were appropriate investigations to assign one of three subtypes; large vessel disease, cardioembolic and small vessel disease. The unknown cases were only included in the analyses of all ischaemic stroke which did not take into account subtype.

Our main analyses were of associations with all ischemic stroke and with the three main subtypes: large vessel, cardioembolic and small vessel stroke. We performed additional analyses in the discovery populations with young stroke (age <70 years at first stroke), and with the presence of large vessel stenosis and, separately, the presence of cardioembolic source, irrespective of assigned subtype. These last two analyses allowed inclusion of patients whose data was excluded from individual subtype analysis because they had more than one potential stroke subtype. Details of individual populations are given in Table 1 and in supplementary material.

DNA sample preparation

This was performed as described in the Supplementary Material.

GWA genotyping

Samples from the cases were genotyped at the WTSI on the Human660W-Quad (a custom chip designed by WTCCC2 comprising Human550 and circa 6000 common CNVs from the Structural Variation Consortium (24)). Samples from British control collections were genotyped on the Human1.2M-Duo (a WTCCC2 custom array comprising Human1M-Duo and the CNV content described above). Bead intensity data was processed and normalized in BeadStudio; data for successfully genotyped samples was extracted and genotypes called within collections using Illuminus(25). German controls were typed on Illumina Human 550k platform, and intensity data was processed and normalized for each sample in GenomeStudio using the Illumina cluster file HumanHap550v3.

GWA quality control

Samples—As previously described (26,27), we removed samples whose genome-wide patterns of diversity differed from those of the collection at large, interpreting them likely to be due to biases or artefacts. To do so we used a Bayesian clustering approach (28) to infer outlying individuals on the basis of call rate, heterozygosity, ancestry, and average probe intensity. To obtain a set of putatively unrelated individuals we used a hidden Markov model (HMM) to infer identity by descent and then iteratively removed individuals to obtain a set with pair-wise identity by descent <5%. To guard against sample mishandling we removed samples if their inferred gender was discordant with recorded gender, or if <90% of the SNPs typed by Sequenom on entry to sample handling (see above) agreed with the genome-wide data. Our final discovery dataset consisted of 3548 cases (2374 British, 1174 German) and 5972 controls (5175 British, 797 German) following sample quality control (Supplementary Table 4). A full breakdown of samples by cohort and subtype is in Table 1.

SNPs—A measure of (Fisher) information for allele frequency at each SNP was calculated using SNPTEST (see URLs). Autosomal SNPs were excluded if this information measure was below 0.98, if minor allele frequency was <0.01%, if the SNP had >5% missing data, or if Hardy Weinberg p-value was $<1 \times 10^{-20}$ in the case or control collections. In the 58C, UKBS and case data set, association between SNP and the plate on which samples were genotyped was calculated and SNPs with a plate effect p-value $<1 \times 10^{-6}$ were also excluded. An additional 45 SNPs were removed following visual inspection of cluster plots. A breakdown of the number of SNPs excluded is provided in Supplementary Table 5. Only SNPs genotyped on all the case and control collections were considered, leaving 495,851 autosomal SNPs after quality control. Hardy Weinberg p-values for the SNPs taken to replication are given in Supplementary Table 6.

Initial replication genotyping and quality control

Genotyping of European replication samples was carried out at the WTSI using Sequenom iPLEX Gold assay and genotyping of the US samples at the Broad Institute, Boston, USA using the Sequenom platform, with the exception of the GEOS Study, in which genotyping was carried out using Illumina Human Omni1-Quad. Imputation to HapMap3 using BEAGLE software program (29) was performed. Individual samples were excluded from analysis if they had call rates <80% or if reported gender was discordant with gender specific markers. We removed pairs of samples showing concordance indicative of being duplicates.

The PoBI samples were genotyped on the custom Human1.2M-Duo array using Illumina's Infinium platform and subjected to similar quality control as described above; for each SNP used in replication the cluster plot was visually inspected.

The PROCARDIS controls were genotyped with the Illumina HumanHap 610 Quad beadchip. PCA with HapMap2 reference population data allowed exclusion of individuals with non-European ancestry. Subsequent PCA with HapMap3 on German stroke samples with GWAS data and additional European reference population data, showed German PROCARDIS controls had similar ancestry to German stroke cases (data not shown).

Third stage replication of rs11984041 SNP

For the deCODE cases and controls genotyping was performed on 317K or 370K Illumina chips. The SNP rs11984041 was imputed using HapMap. ASGC cases and control samples were genotyped on the Illumina HumanHap610-Quad array, SNP rs11984041 was directly genotyped. Milan cases samples were genotyped using Illumina Human610-Quadv1_B or Human660W-Quad_v1_A beadchip; both include the rs11984041 SNP. Milan controls were

genotyped with the Illumina HumanHap 610 Quad beadchip. PCA with HapMap3 on the Italian stroke samples showed that Italian PROCARDIS controls had similar ancestry to Italian stroke cases.

Genotype imputation

This was performed as described in the Supplementary Material.

Association analysis

We performed single SNP analysis separately in the British and German discovery data sets under an additive model (on the log-odds scale) using missing data likelihood score tests as implemented in SNPTTEST. We conducted a fixed effect meta-analysis in R to combine the evidence of association, averaging the estimated effect size parameters associated with genotype risk across the two data sets, weighting the effect size estimates by the inverse of the square of corresponding standard errors. P-values were calculated assuming the combined data z-score to be normally distributed. The British and German cohorts had an inflation factor ranging from 1.014 to 1.058 and from 1.011 to 1.044 respectively, depending on the stroke subtype considered (Supplementary Figure 1). This analysis was also performed separately in males and females.

We also conducted a genome-wide scan analysis based on a Bayesian model which allows each stroke subtype to have its own effect and models relationships between these effects using a hierarchical prior specification. The same effects were assumed for the corresponding stroke subtype in both British and German populations (Supplementary Table 2).

Finally we performed a genome-wide scan using GENECLUSTER (31). This estimates genealogical tree of the case-control sample at a position of interest based on the genealogy of a reference panel (HapMap2 CEU in our case), by simultaneously phasing and clustering the case and control haplotypes to the tips of the reference genealogy. The method detects signals of association in the form of differential clustering of cases and controls underneath a branch, or a number of branches, in the estimated genealogy, which is equivalent to associations due to haplotypic effects or allelic heterogeneity (Supplementary Table 2).

Replication

Replication of potential associations found in the GWAS of the discovery cohorts was conducted in two stages in independent European and American samples. We investigated in the European replication cohorts 50 SNPs, that either were in loci reported in the literature from previous GWAS, or showed potential associations ($P < 1 \times 10^{-5}$) with all stroke or one of the stroke subtypes in analysis of the discovery data set, and showed consistent direction of effect in both British and German cohorts (Supplementary Table 2). This threshold was chosen based on resources available for replication. After analysis of the combined results of the discovery and European replication populations 20 of these SNPs were taken forward to second stage replication in the American samples (Supplementary Table 3).

Association analysis was performed in each replication cohort separately via a logistic regression assuming an additive genetic model. Evidence of association across the replication data was combined using a fixed effect meta-analysis as previously described. Data on the presence or absence of a cardioembolic source or large vessel stenosis (irrespective of assigned TOAST subtype) were not available in all of replication cohorts. For replication of SNPs identified due to association with these phenotypes in the discovery cohorts, we assessed association in the replication cohorts with the cardioembolic or large vessel stroke subtypes respectively.

Bayesian model comparison

Details of this analysis are given in the Supplemental Material.

Additional references

The authors of this paper are:

Bellenguez Céline^{1*} Bevan Steve^{2*} Gschwendtner Andreas³ Spencer Chris C
 A1 Burgess Annette I.4 Pirinen Matti I Jackson Caroline
 A5 Traylor Matthew² Strange Amy¹ Su Zhan¹ Band Gavin¹ Syme Paul
 D6 Malik Rainer³ Pera Joanna⁷ Norrving Bo^{8,9} Lemmens Robin^{10,11} Freeman Colin¹ Schanz Re-
 nata¹² James Tom² Poole Deborah⁴ Murphy Lee¹³ Segal Helen⁴ Cortellini Lynelle^{14,15} Cheng Y
 u-Ching¹⁶ Woo Daniel¹⁷ Nalls Michael A.¹⁸ Müller-
 Myhsok Bertram¹⁹ Meisinger Christa²⁰ Seedorf Udo²¹ Ross-
 Adams Helen⁷ Boonen Steven²² Wloch-
 Kopec Dorota⁷ Valant Valerie^{14,15} Slark Julia¹² Furie Karen¹⁴ Delavaran Hossein^{8,9} Langford
 Cordelia²³ Deloukas Panos²³ Edkins Sarah²³ Hunt Sarah²³ Gray Emma²³ Dronov Serge²³ Pelto-
 nen Leena²³ Gretarsdottir Solveig²⁴ Thorleifsson Gudmar²⁴ Thorsteinsdottir Unnur^{24,25} Stefan-
 sson Kari^{24,25} Boncoraglio Giorgio B.²⁶ Parati Eugenio A.
 26 Attia John²⁷ Holliday Elizabeth²⁷ Levi Chris²⁷ Franzosi Maria-
 Grazia²⁸ Goel Anuj^{1,29} Helgadottir Anna^{1,24,29} Blackwell Jenefer
 M30,31 Bramon Elvira³² Brown Matthew A³³ Casas Juan
 P34,35 Corvin Aiden³⁶ Duncanson Audrey³⁷ Jankowski Janusz^{38,39} Mathew Christopher
 G40 Palmer Colin NA⁴¹ Plomin Robert⁴² Rautanen Anna¹ Sawcer Stephen
 J43 Trembath Richard C⁴⁰ Viswanathan Ananth C⁴⁴ Wood Nicholas W⁴⁵ Worrall Bradford B.
 46 Kittner Steven J⁴⁷ Mitchell Braxton D¹⁶ Kissela Brett¹⁷ Meschia James F.
 48 Thijs Vincent^{10,11} Lindgren Arne^{8,9} Macleod Mary
 Joan⁶ Slowik Agnieszka⁷ Walters Matthew⁴⁹ Rosand Jonathan^{14,15} Sharma Pankaj¹² Farrell Ma-
 rtin^{1,29} Sudlow Cathie LM⁵ Rothwell Peter
 M4 Dichgans Martin³ Donnelly Peter^{1,50†} Markus Hugh S^{2†}
¹Wellcome Trust Centre for Human Genetics, University of Oxford, Roosevelt Drive,
 Oxford, UK
²Stroke and Dementia Research Group, St George's University of London, London,
 UK
³Institute for Stroke and Dementia Research, Klinikum der Universität München,
 Ludwig-Maximilians-University Munich, Germany
⁴Stroke Prevention Research Unit, Nuffield Department of Clinical Neuroscience,
 University of Oxford
⁵Division of Clinical Neurosciences, University of Edinburgh, Edinburgh, UK
⁶Division of Applied Medicine, University of Aberdeen, Aberdeen, UK
⁷Department of Neurology, Jagiellonian University Medical College, Botaniczna 3
 str. 31-503 Krakow, Poland
⁸Department of Clinical Sciences Lund, Neurology, Lund University, Sweden
⁹Department of Neurology, Skåne University Hospital, Lund, Sweden
¹⁰Department of Neurology, University Hospitals Leuven, Belgium

*These authors contributed equally.

†These authors jointly directed the study.

- ¹¹Vesalius Research Center, VIB, Leuven, Belgium
- ¹²Imperial College Cerebrovascular Research Unit (ICCRU), Imperial College London, Fulham Palace Rd, London, UK
- ¹³Wellcome Trust Clinical Research Facility Genetics Core Laboratory, University of Edinburgh, Western General Hospital, Edinburgh. UK
- ¹⁴Center for Human Genetic Research, Department of Neurology, Massachusetts General Hospital, Boston, USA
- ¹⁵Program in Medical and Population Genetics, Broad Institute, Cambridge MA, USA
- ¹⁶University of Maryland School of Medicine, Departments of Medicine, Epidemiology and Public Health, Baltimore USA
- ¹⁷University of Cincinnati College of Medicine, Cincinnati, OH, USA
- ¹⁸Laboratory of Neurogenetics, Intramural Research Program, National Institute on Aging, Bethesda, Maryland, USA
- ¹⁹Max Planck Institute of Psychiatry, Munich, Germany
- ²⁰Helmholtz Zentrum München, German Research Center for Environmental Health, Institute of Epidemiology II, Neuherberg, Germany
- ²¹Leibniz-Institut für Arterioskleroseforschung an der Universität Münster, Münster, Germany
- ²²Division of Geriatric Medicine, University Hospital Leuven, Leuven, Belgium
- ²³Wellcome Trust Sanger Institute, Wellcome Trust Genome Campus, Hinxton, Cambridge, UK
- ²⁴deCODE Genetics, Sturlugata 8, IS-101 Reykjavik, Iceland
- ²⁵University of Iceland, Faculty of Medicine, 101 Reykjavik, Iceland
- ²⁶Fondazione IRCCS Istituto Neurologico Carlo Besta, Milano, Italy
- ²⁷Centre for Brain and Mental Health Research, University of Newcastle, Hunter Medical Research Institute, Newcastle, NSW, Australia
- ²⁸Department of Cardiovascular Research, Istituto di Ricerche Farmacologiche Mario Negri, Milan, Italy
- ²⁹Department of Cardiovascular Medicine, University of Oxford, Oxford, UK
- ³⁰Centre for Child Health Research, University of Western Australia, West Perth, Australia
- ³¹Cambridge Institute for Medical Research, University of Cambridge School of Clinical Medicine, Cambridge, UK
- ³²Division of Psychological Medicine and Psychiatry, Biomedical Research Centre for Mental Health at the Institute of Psychiatry, King's College London, UK
- ³³The University of Queensland Diamantina Institute, Princess Alexandra Hospital, University of Queensland, Brisbane, Queensland, Australia
- ³⁴Dept Epidemiology and Population Health, London School of Hygiene and Tropical Medicine, London, UK
- ³⁵Department of Epidemiology and Public Health, University College London, UK

- ³⁶Neuropsychiatric Genetics Research Group, Institute of Molecular Medicine, Trinity College Dublin, Eire
- ³⁷Molecular and Physiological Sciences, The Wellcome Trust, London, UK
- ³⁸Centre for Gastroenterology, Bart's and the London School of Medicine and Dentistry, London, UK
- ³⁹Division of Clinical Pharmacology, University of Oxford, Oxford, UK
- ⁴⁰Dept Medical and Molecular Genetics, King's College London School of Medicine, Guy's Hospital, London, UK
- ⁴¹Biomedical Research Centre, Ninewells Hospital and Medical School, Dundee, UK
- ⁴²Social, Genetic and Developmental Psychiatry Centre, King's College London Institute of Psychiatry, Denmark Hill, London, UK
- ⁴³University of Cambridge Dept Clinical Neurosciences, Addenbrooke's Hospital, Cambridge, UK
- ⁴⁴NIHR Biomedical Research Centre for Ophthalmology, Moorfields Eye Hospital NHS Foundation Trust and UCL Institute of Ophthalmology, London, UK
- ⁴⁵Dept Molecular Neuroscience, Institute of Neurology, Queen Square, London, UK
- ⁴⁶University of Virginia Departments of Neurology and Public Health Sciences, Charlottesville, Virginia, USA
- ⁴⁷Baltimore Veterans Administration Medical Center and University of Maryland School of Medicine, Department of Neurology and the Geriatric Research, Education, and Clinical Center, Baltimore, USA
- ⁴⁸Mayo Clinic, Department of Neurology, Jacksonville, Florida, USA
- ⁴⁹Institute of Cardiovascular and Medical Sciences, University of Glasgow, Glasgow, UK
- ⁵⁰Dept Statistics, University of Oxford, Oxford, UK
- *These authors contributed equally.
- †These authors jointly directed the study.

References

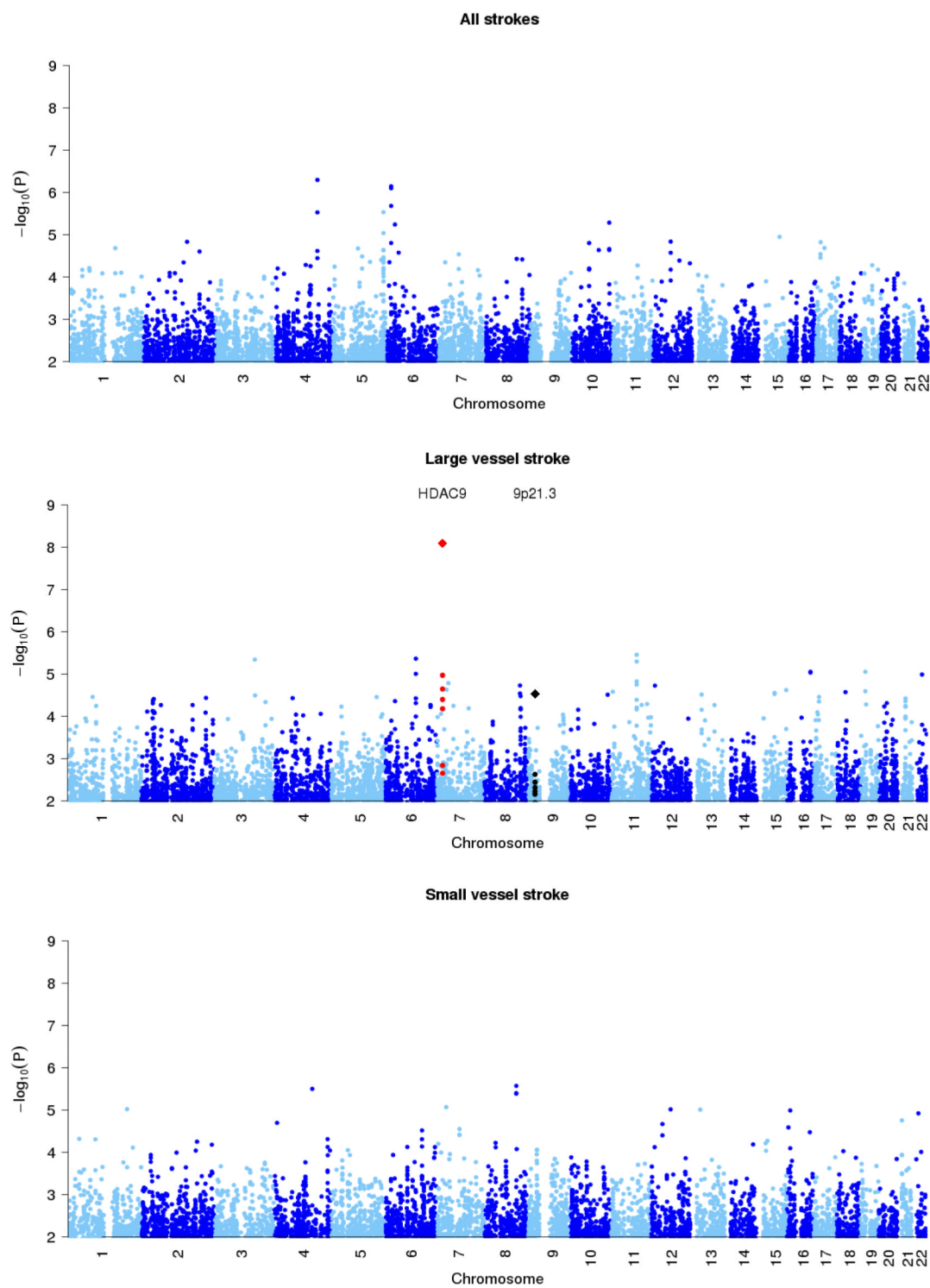
1. Reducing brain damage: faster access to better stroke care. National Audit Office, Department of Health; London, UK: 2005.
2. Sacco RL, Ellenberg JH, Mohr JP, Tatemichi TK, Hier DB, Price TR, Wolf PA. Infarcts of undetermined cause: the NINCDS Stroke Data Bank. *Ann Neurol.* 1989; 25:382–90. [PubMed: 2712533]
3. Dichgans M. Genetics of ischaemic stroke. *Lancet Neurol.* 2007; 6:149–161. [PubMed: 17239802]
4. Jerrard-Dunne P, Cloud G, Hassan A, Markus HS. Evaluating the genetic component of ischemic stroke subtypes: a family history study. *Stroke.* 2003; 34:1364–1369. [PubMed: 12714707]
5. Gretarsdottir S, Thorleifsson G, Manolescu A, Styrkarsdottir U, Helgadottir A, et al. Risk variants for atrial fibrillation on chromosome 4q25 associate with ischemic stroke. *Ann Neurol.* 2008; 64:402–409. [PubMed: 18991354]
6. Lemmens L, Buysschaert I, Geelen V, Fernandez-Cadenas I, Montaner J, et al. The Association of the 4q25 Susceptibility Variant for Atrial Fibrillation With Stroke Is Limited to Stroke of Cardioembolic Etiology. *Stroke.* 2010; 41:1850–1857. [PubMed: 20671249]

7. Gschwendtner A, Bevan S, Cole JW, Plourde A, Matarin M, et al. Sequence variants on chromosome 9p21.3 confer risk for atherosclerotic stroke. *Ann Neurol*. 2009; 65:531–539. [PubMed: 19475673]
8. Markus HS. Genetics Studies in Ischaemic Stroke. *Translational Stroke Research*. 2010; 1:238–245.
9. Adams HP Jr, Bendixen BH, Kappelle LJ, Biller J, Love BB, et al. Classification of subtype of acute ischemic stroke. Definitions for use in a multicenter clinical trial. TOAST. Trial of Org 10172 in Acute Stroke Treatment. *Stroke*. 1993; 24:35–41. [PubMed: 7678184]
10. Gudbjartsson DF, Holm H, Gretarsdottir S, Thorleifsson G, Walters GB, et al. A sequence variant in ZFHX3 on 16q22 associates with atrial fibrillation and ischemic stroke. *Nat Genet*. 2009; 41:876–878. [PubMed: 19597491]
11. International Stroke Genetics Consortium; Wellcome Trust Case-Control Consortium 2. Failure to validate association between 12p13 variants and ischemic stroke. *N Engl J Med*. 2010; 22:362–1547.
12. Olsson S, Melander O, Jood K, Smith JG, Lökvist H, et al. the International Stroke Genetics Consortium (ISGC). Genetic Variant on Chromosome 12p13 Does Not Show Association to Ischemic Stroke in 3 Swedish Case-Control Studies. *Stroke*. 2011; 42:214–216. [PubMed: 21148441]
13. Ikram MA, Seshadri S, Bis JC, Fornage M, DeStefano AL, et al. Genomewide association studies of stroke. *N Engl J Med*. 2009; 23:360–1718.
14. Chen K, Xiao ZS, Hou SQ, Zhao RT, Liu YF, et al. Strong association between the NINJ2 gene polymorphism and the susceptibility of stroke in Chinese Han population in Fangshan district. *Beijing Da Xue Xue Bao*. 2010; 42:498–502. [PubMed: 20957003]
15. Newton-Cheh C, Johnson T, Gateva V, Tobin MD, Bochud M, et al. Genome-wide association study identifies eight loci associated with blood pressure. *Nat Genet*. 2009; 41:666–76. [PubMed: 19430483]
16. Teslovich TM, Musunuru K, Smith AV, Edmondson AC, Stylianou IM, et al. Biological, clinical and population relevance of 95 loci for blood lipids. *Nature*. 2010; 5:466–707.
17. Voight BF, Scott LJ, Steinthorsdottir V, Morris AP, Dina C, et al. Twelve type 2 diabetes susceptibility loci identified through large-scale association analysis. *Nat Genet*. 2010; 42:579–89. [PubMed: 20581827]
18. Haberland M, Montgomery RL, Olson EN. The many roles of histone deacetylases in development and physiology: implications for disease and therapy. *Nat Rev Genet*. 2009; 10:32–42. [PubMed: 19065135]
19. Chang S, McKinsey TA, Zhang CL, Richardson JA, Hill JA, et al. Histone deacetylases 5 and 9 govern responsiveness of the heart to a subset of stress signals and play redundant roles in heart development. *Mol Cell Biol*. 2004; 24:8467–76. [PubMed: 15367668]
20. Kouzarides T. Acetylation: a regulatory modification to rival phosphorylation? *EMBO J*. 2000; 19:1176–9. [PubMed: 10716917]
21. Glaser KB, Staver MJ, Waring JF, Stender J, Ulrich RG, et al. Gene expression profiling of multiple histone deacetylase (HDAC) inhibitors: defining a common gene set produced by HDAC inhibition in T24 and MDA carcinoma cell lines. *Mol Cancer Ther*. 2003; 2:151–63. [PubMed: 12589032]
22. Langley B, Brochier C, Riviello MA. Targeting histone deacetylases as a multifaceted approach to treat the diverse outcomes of stroke. *Stroke*. 2009; 40:2899–905. [PubMed: 19478231]
23. Kubo M, Hata J, Ninomiya T, Matsuda K, Yonemoto K, Nakano T, et al. A nonsynonymous SNP in PRKCH (protein kinase C η) increases the risk of cerebral infarction. *Nat Genet*. 2007; 39:212–217. [PubMed: 17206144]
24. Conrad DF, Pinto D, Redon R, Feuk L, Gokcumen O, et al. Origins and functional impact of copy number variation in the human genome. *Nature*. 2010; 464:704–12. [PubMed: 19812545]
25. Teo Y, Inouye M, Small K, Gwilliam R, Deloukas P, et al. A genotype calling algorithm for the Illumina BeadArray platform. *Bioinformatics*. 2007; 23:2741–2746. [PubMed: 17846035]
26. Genetic Analysis of Psoriasis Consortium; the Wellcome Trust Case Control Consortium 2. Strange A, Capon F, Spencer CC, et al. A genome-wide association study identifies new psoriasis

- susceptibility loci and an interaction between HLA-C and ERAP1. *Nat Genet.* 42:985–990. [PubMed: 20953190]
27. The UK Parkinson's Disease Consortium; The Wellcome Trust Case Control Consortium 2. Dissection of the genetics of Parkinson's disease identifies an additional association 5' of SNCA and multiple associated haplotypes at 17q21. *Hum Mol Genet.* 2011; 20:345–353. [PubMed: 21044948]
 28. Bellenguez C, Strange A, Freeman C; Wellcome Trust Case Control Consortium,
 29. Donnelly P, Spencer CC. A robust clustering algorithm for identifying problematic samples in genome-wide association studies. *Bioinformatics.* Nov 3.2011 [Epub ahead of print] PubMed PMID: 22057162.
 30. Browning B, Browning S. A unified approach to genotype imputation and haplotype-phase inference for large data sets of trios and unrelated individuals. *Am J Hum Genet.* 2009; 84:210–23. [PubMed: 19200528]
 31. Howie BN, Donnelly P, Marchini J. A flexible and accurate genotype imputation method for the next generation of genome-wide association studies. *PLoS Genet.* 2009; 5:e1000529. [PubMed: 19543373]
 32. Su Z, Cardin N, Wellcome Trust Case Control Consortium. Donnelly P, Marchini J. A Bayesian Method for Detecting and Characterizing Allelic Heterogeneity and Boosting Signals in Genome-Wide Association Studies. *Statist. Sci.* 2009; 24:430–450.

URL section

33. PROCARDIS. www.procardis.org
34. SNPTTEST. <http://www.stats.ox.ac.uk/~marchini/software/gwas/snptest.html>
35. NINDS Human Genetics Resource Center DNA and Cell Line Repository. <http://ccr.coriell.org/ninds>
36. Biowulf Linux cluster at the National Institutes of Health. Bethesda, Md. (<http://biowulf.nih.gov>)



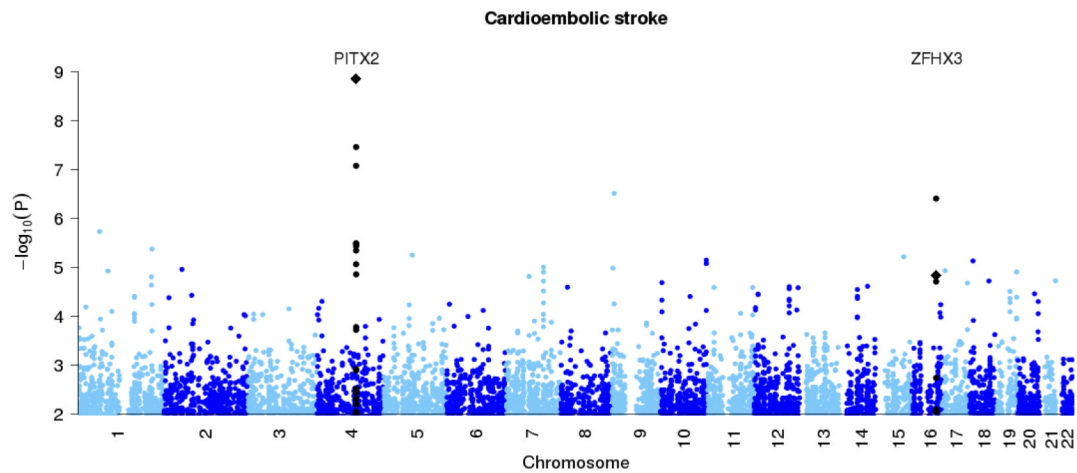


Figure 1. Genome-wide association results at autosomal SNPs in combined British and Germany discovery samples

All ischemic stroke (top panel), large vessel stroke (second panel), small vessel stroke (third panel) and cardioembolic stroke (final panel). Loci previously reported in the literature for particular stroke subtypes (Table 2) are shown in black, with the new *HDAC9* locus shown in red. In addition the combined p-values for discovery study and stages one and two of the replication study, at the top SNPs for these loci, are marked with diamonds.

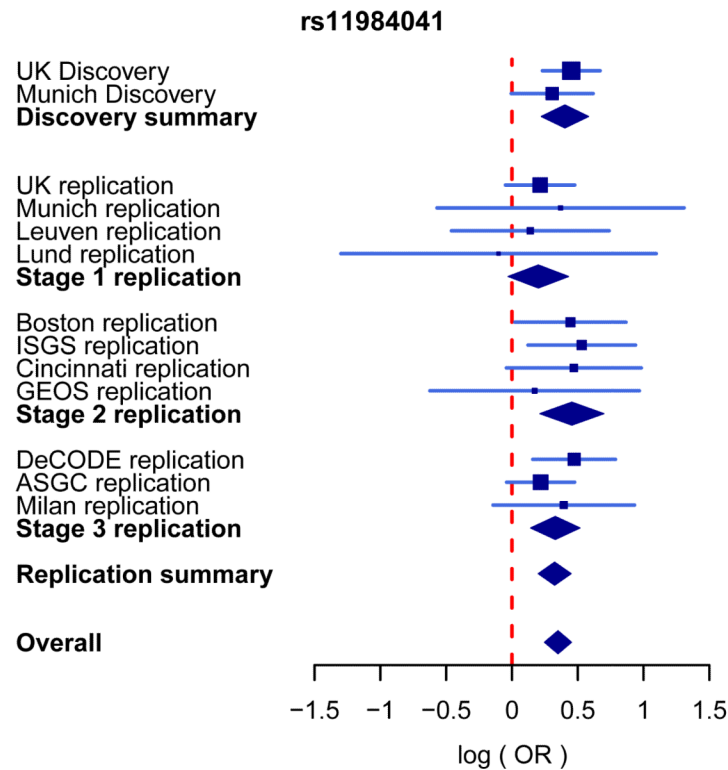


Figure 2. Forest plot for the associations between rs11984041 and large vessel stroke in discovery and replication collections

The blue lines show the 95% confidence intervals of the log odds-ratio (OR) for each cohort, with the area of each square proportional to the inverse of the standard error. The diamonds indicate the 95% confidence interval for, from top to bottom, the discovery summary (combined British and German discovery collections), combined across collections within each of the three replication stages, the replication summary (combined across all three replication stages) and the overall summary (all discovery and replication collections combined). Evidence was combined across collections via an inverse-variance weighted fixed-effect meta-analysis. There was no evidence of heterogeneity of effect across collections ($P = 0.92$).

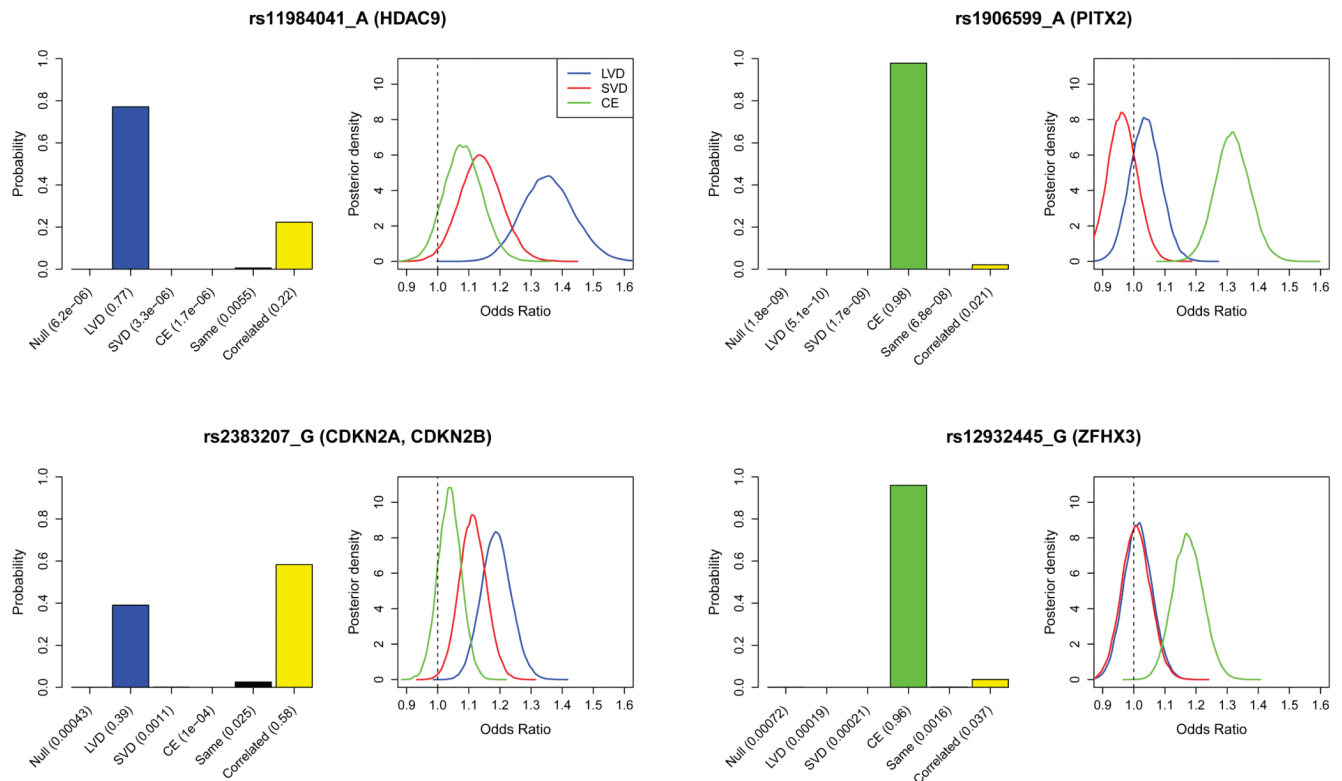


Figure 3. Genetic heterogeneity of different stroke sub-types for the 4 loci with significant associations: *HDAC9*, *PITX2*, *9p21(CDKN2A/CDKN2B)* and *ZFHX3*

Bar plots show the posterior probabilities on the models of association: no effect in any subtype (Null), same effect in all subtypes, correlated effects across subtypes or subtype specific effects (see main text). Models are *a priori* assumed to be equally likely. Bayes factors, which compare the evidence (marginal likelihood) between any pair of models, can be calculated as the ratio of the posterior probability assigned to each model as reported under each bar of the plot. Accompanying density plots show the marginal posterior distribution on the odds ratio of the risk allele for each stroke subtype assuming a model of correlated effects (see methods for specification of priors). These analyses were performed using both discovery and replication samples (stage 1 & 2).

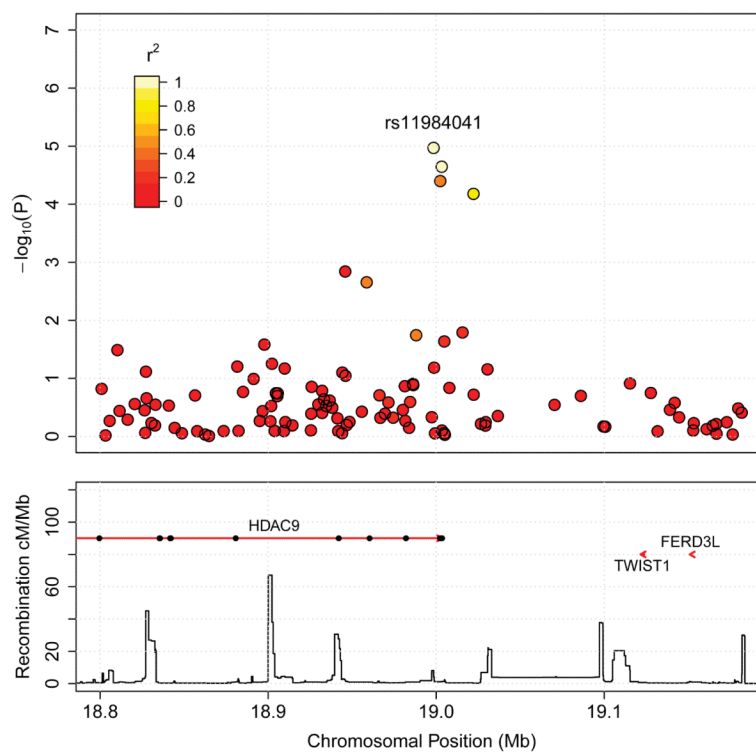


Figure 4.

Plot of association signals around rs11984041 for large vessel stroke in the combined British and German discovery samples. SNPs are coloured based on their correlation (r^2) with the labelled hit SNP which has the smallest P-value in the region. r^2 is calculated from the WTCCC2 control data. The bottom section of each plot shows the fine scale recombination rates estimated from HapMap data, and genes are marked by horizontal red lines. Arrows on the horizontal red lines denote direction of transcription, and black rectangles are exons.

and

Table 1
Post quality control breakdown of case and control by cohort and ischaemic stroke subtype

All: all ischaemic stroke, LVD: large vessel stroke, SVD: small vessel stroke, CE: cardioembolic stroke. Note that not all strokes are classified into a subtype.

	All strokes			Controls		
	LVD	CE	SVD	LVD	CE	SVD
DISCOVERY	Munich	1174	346	330	106	797
	UK ¹	2374	498	460	474	5175
	Total	3548	844	790	580	5972
STAGE 1 REPLICATION - EUROPEAN	Krakow	1214	152	362	170	551
	Leuven	418	63	154	52	650
	Lund	428	21	139	97	465
	Munich ²	54	19	16	5	310
	UK ³	1749	306	303	490	2578
	Total	3863	561	974	814	4554
STAGE 2 REPLICATION - US	Boston	533	150	206	56	522
	Cincinnati	438	67	106	90	257
	GEOS	419	37	90	54	498
	ISGS	606	121	156	111	450
	Total	1996	375	558	311	1727
STAGE 1 + STAGE 2 REPLICATION	Total	5859	936	1532	1125	6281
DISCOVERY + REPLICATION	Total	9407	1780	2322	1705	12253

¹The UK discovery cohort was made of three British cohorts from London, Oxford and Edinburgh and used the shared WTCCC2 controls.

²The Munich replication samples comprised some samples planned for the discovery GWAS where there was insufficient DNA for GWAS but sufficient for replication. It used controls from a German cohort enrolled in the PROCARDIS trial.

³The UK replication cohorts included samples from Aberdeen, Glasgow and Imperial as well as some samples planned for the discovery GWAS where there was insufficient DNA for GWAS but sufficient for replication (see methods). The UK replication cohorts used shared POBI controls genotypes as part of the WTCCC2.

and

Page 19

Table 2

Association signals at the newly associated locus (upper tier) and at loci previously reported as associated with stroke or one of the stroke subtype (lower tier)

All: all ischaemic stroke, LVD: large vessel stroke, CE: cardioembolic stroke. For PITX2 and ZFH3, results are given for one SNP reported in the literature and the SNP that showed the strongest association signal in the discovery samples. For the 9p21 region, the SNP reported in the literature is also the one showing the strongest association signal in the discovery cohort. There is some overlap between samples in this study and previous published studies of associations with above loci (5,6,10,13). A SNP in PRKCH, associated with stroke in Japanese populations (23) was very rare (<0.5%) in our Caucasian population so we had no power to perform an analysis of association with this SNP.

Chr	rsID	Position ⁶	Candidate gene	Stroke subtype	Risk allele	RAF ⁷	Discovery P-value OR(95% CI)	Stage 1&2 P-value (one-sided) OR (95% CI)	Stage3 P-value (one-side) OR (95% CI)	Combined P-value OR(95%CI)
7p21.1	rs11984041 ^{1,2}	18,998,460	HDAC9	LVD	A	0.09	1.07E-05 1.50 (1.25-1.79)	7.90E-05 1.38 (1.17-1.63)	2.25E-04 1.39 (1.15-1.68)	1.87E-11 1.42 (1.28-1.57)
4q25	rs2200733 ^{2,3,4}	111,929,618	PITX2	CE	A	0.10	3.64E-06 1.49 (1.26-1.77)	3.99E-04 1.24 (1.09-1.41)	- -	5.06E-8 1.32 (1.20-1.46)
	rs19065993	111,932,135					3.45E-08 1.45 (1.27-1.66)	3.16E-04 1.19 (1.08-1.32)	- -	1.39E-09 1.28 (1.18-1.39)
9p21.3	rs23832073	22,105,959	CDKN2A, CDKN2B	LVD	G	0.51	2.35E-03 1.18 (1.06-1.31)	2.03E-03 1.16 (1.05-1.28)	- -	2.93E-05 1.17 (1.09-1.25)
12p13.33	rs11833579 ^{3,5}	645,460	NINJ2	All	G	0.75	9.65E-01 1.00 (0.92-1.08)	5.25E-01 1.00 (0.94-1.06)	- -	9.81E-01 1.00 (0.95-1.05)
16q22.3	rs7193343 ³	71,586,661	ZFH3	CE	A	0.16	1.94E-05 1.36 (1.18-1.57)	- -	- -	- -
	rs12932445 ²	71,627,389					3.91E-07 1.44 (1.25-1.66)	4.84E-02 1.09 (0.98-1.21)	- -	1.44E-05 1.20 (1.11-1.31)

¹ Krakow replication samples were not considered because of Hardy-Weinberg test p-value < 5×10^{-4} in controls.

² SNP imputed in GEOS replication samples.

³ SNP reported in the literature.

⁴ TSGS replication samples were not considered because of Hardy-Weinberg test p-value < 5×10^{-4} in controls.



⁵ SNP imputed in the British discovery samples and not genotyped nor imputed in the discovery and replication German controls.

⁶ NCBI human genome build 36 coordinates.

⁷ Risk allele frequency computed in the British discovery controls

and