



THE UNIVERSITY *of* EDINBURGH

Edinburgh Research Explorer

Voice anthropomorphism, interlocutor modelling and alignment effects on syntactic choices in human–computer dialogue

Citation for published version:

Cowan, B, Branigan, H, Obregón, M, Bugis, E & Beale, R 2015, 'Voice anthropomorphism, interlocutor modelling and alignment effects on syntactic choices in human–computer dialogue', *International Journal of Human-Computer Studies*, vol. 83, pp. 27–42. <https://doi.org/10.1016/j.ijhcs.2015.05.008>

Digital Object Identifier (DOI):

[10.1016/j.ijhcs.2015.05.008](https://doi.org/10.1016/j.ijhcs.2015.05.008)

Link:

[Link to publication record in Edinburgh Research Explorer](#)

Document Version:

Peer reviewed version

Published In:

International Journal of Human-Computer Studies

General rights

Copyright for the publications made accessible via the Edinburgh Research Explorer is retained by the author(s) and / or other copyright owners and it is a condition of accessing these publications that users recognise and abide by the legal requirements associated with these rights.

Take down policy

The University of Edinburgh has made every reasonable effort to ensure that Edinburgh Research Explorer content complies with UK legislation. If you believe that the public display of this file breaches copyright please contact openaccess@ed.ac.uk providing details, and we will remove access to the work immediately and investigate your claim.



Abstract

The growth of speech interfaces and speech interaction with computer partners has made it increasingly important to understand the factors that determine users' language choices in human-computer dialogue. We report two controlled experiments that used a picture-naming-matching task to investigate whether users in human-computer speech-based interactions tend to use the same grammatical structures as their conversational partners, and whether such *syntactic alignment* can impact strong default grammatical preferences. We additionally investigate whether beliefs about system capabilities that are based on partner identity (i.e. human or computer) and speech interface design cues (here, voice anthropomorphism) affect the magnitude of syntactic alignment in such interactions. We demonstrate syntactic alignment for both dative structures (e.g., *give the waitress the apple* vs. *give the apple to the waitress*), where there is no strong default preference for one or other structure (Experiment 1), and noun phrase structures (e.g., *a purple circle* vs. *a circle that is purple*), where there is a strong default preference for one structure (Experiment 2). The tendency to align syntactically was unaffected by partner identity (human vs. computer) or voice anthropomorphism. These findings have both practical and theoretical implications for HCI by demonstrating the potential for spoken dialogue system behaviour to influence users' syntactic choices in interaction. As well as verifying natural corpora findings, this work also highlights that priming and cognitive mechanisms that are unmediated by beliefs about partner identity could be important in understanding why people align syntactically in human-computer dialogue.

***Highlights (for review)**

Highlights:

- Paper investigates syntactic alignment in spoken human-computer dialogue
- The role of partner modelling through partner type and voice is also explored
- Humans align similarly with human and computer partners, irrespective of voice
- Priming is an important mechanism to consider in explaining our HCD behaviours
- Syntactic alignment can affect strong default preferences and could be used to improve spoken dialogue technology

Voice anthropomorphism, interlocutor modelling and alignment effects on syntactic choices in human-computer dialogue

**Benjamin R Cowan^{1,3*}, Holly P. Branigan², Mateo Obregón², Enas Bugis¹,
Russell Beale¹**

***Corresponding Author**

**¹ HCI Centre, School of Computer Science, University of Birmingham, Edgbaston
Campus, Birmingham, B15 2TT**

**² Department of Psychology, University of Edinburgh, 7 George Square, Edinburgh,
EH8 9JZ**

**³ School of Information and Library Studies, University College Dublin, Belfield,
Dublin 4, Ireland**

Email: benjamin.cowan@ucd.ie

Tel: +353 (0)17167660

Abstract

The growth of speech interfaces and speech interaction with computer partners has made it increasingly important to understand the factors that determine users' language choices in human-computer dialogue. We report two controlled experiments that used a picture-naming-matching task to investigate whether users in human-computer speech-based interactions tend to use the same grammatical structures as their conversational partners, and whether such *syntactic alignment* can impact strong default grammatical preferences. We additionally investigate whether beliefs about system capabilities that are based on partner identity (i.e. human or computer) and speech interface design cues (here, voice anthropomorphism) affect the magnitude of syntactic alignment in such interactions. We demonstrate syntactic alignment for both dative structures (e.g., *give the waitress the apple* vs. *give the apple to the waitress*), where there is no strong default preference for one or other structure (Experiment 1), and noun phrase structures (e.g., *a purple circle* vs. *a circle that is purple*), where there is a strong default preference for one structure (Experiment 2). The tendency to align syntactically was unaffected by partner identity (human vs. computer) or voice anthropomorphism. These findings have both practical and theoretical implications for HCI by demonstrating the potential for spoken dialogue system behaviour to influence users' syntactic choices in interaction. As well as verifying natural corpora findings, this work also highlights that priming and cognitive mechanisms that are unmediated by beliefs about partner identity could be important in understanding why people align syntactically in human-computer dialogue.

Keywords: Human-computer dialogue, syntactic alignment, speech interaction, user behaviour, psycholinguistics, interlocutor modelling

1. INTRODUCTION

Recent innovations in consumer electronics have led to a rapid increase in the frequency of spoken dialogue interactions between people and artificial systems, where users use natural speech to command devices or to query systems, and devices and systems in turn use natural speech to respond. Speech and human-computer dialogue interactions are now common in mainstream technology products; 87% of iPhone 4S users have reported using Siri at least once a month (Barrett & Jiang, 2012) and many other services such as Google Now, in-car systems and Smart TVs are using speech as an interaction modality. The future growth of human-robot interaction as well as the use of embodied conversational agents highlights that natural dialogue interactions between computers and humans are likely to become more prominent. With this in mind, recent calls have been made for HCI and speech-based researchers to combine efforts to understand what governs our interactions with speech technology to design more effective speech interface interactions (Aylett, Kristensson, Whittaker, & Vazquez-Alvarez, 2014).

Although a vast body of knowledge has been accumulated about the factors that govern spoken dialogue behaviours between two people (*human-human dialogues; HHD*), comparatively little is known about spoken dialogues between people and artificial systems (*human-computer dialogues; HCD*). In this paper, we focus on one particular factor that has been hypothesised to strongly influence speakers' behaviour in HHD: linguistic *alignment*, or the tendency for conversational partners to converge on common language choices.

We investigate whether users show alignment of grammatical structure (*syntactic alignment*) in speech-based HCDs under controlled experimental conditions using a game in which a participant and their partner alternately describe and match pictures. The game includes images that can be described by two different grammatical structures. In the game, the participant's partner (a 'confederate') uses specific grammatical structures (*primes*) to describe their images and we observe whether participants then tend to use the same structure rather than the alternative structure in their subsequent descriptions. The game therefore gives participants an opportunity to make choices around the structure they use to describe the images whilst allowing experimenters to observe the effect of the prime on their syntactic choice. Although previous more naturalistic research has suggested that users do align syntactically in speech-based HCD (Stoyanchev & Stent, 2009), such work does not control potential confounds that may affect the magnitude of alignment (e.g. effects associated with repetition of particular words, recency effects, natural frequency of structures and speech recognition errors). Using a controlled experimental paradigm such as the picture-description-matching game allows a precise focus on the causal impact of particular variables while controlling such confounds in the game materials. Indeed such studies are important in validating more naturalistic corpora work (Gilquin & Gries, 2009). The current study also expands previous laboratory-based alignment research on text (Branigan, Pickering, Pearson, McLean, & Nass, 2003) to speech-based dialogue interactions, reflecting the increased prominence of speech as an interaction modality in popular devices. Previous research has also highlighted higher sharing of syntax with the computer in speech-based than text-based interactions (Le Bigot et al., 2007). Text-based studies of alignment may therefore underestimate the

magnitude of alignment in spoken HCD, making it important to explore syntactic alignment in a speech-based HCD context.

Importantly, we examine alignment for two types of syntactic alternation that differ in their default structural preferences. Experiment 1 focuses on Double Object (DO; e.g. “*The cowboy offering the robber the banana*”) and Prepositional Object (PO; e.g. “*The cowboy offering the banana to the robber*”) structures. These are relatively evenly balanced in terms of default preferences in a non-biasing context¹ when people are describing dative events (i.e., events involving transfer of possession; roughly 60% PO, 40% DO, based on natural language corpora: Gries & Stefanowitsch, 2004; see also Pickering, Branigan, & McLean, 2002 for similar evidence from experimental studies). Experiment 2 focuses on noun phrase structures, specifically Adjective-Noun (AN; e.g., *the red circle*) and Noun-Relative Clause (RC; e.g., *the circle that's red*) structures. People have been shown to have a strong default preference for using AN structures in a non-biasing context when they are describing relevant items such as coloured and patterned shapes (around 95%, based on available evidence from experimental studies; Branigan, McLean, Messenger, & Jones, in preparation). Studying two syntactic alternations allows us to verify the generalizability of our findings and test whether mechanisms of syntactic alignment in HCI are sufficiently influential to impact strong intrinsic structural preferences. In addition it also allows us to explore whether syntactic alignment might be mediated more strongly by beliefs about the conversational partner, or *interlocutor*, for structure choices in which one alternative is strongly favoured (as in

¹ In this case, a non-biasing context refers to a context where people have not just been systematically exposed to one or other structure produced by their conversational partner (i.e. a prime).

1
2
3
4 noun phrase structures). Under these circumstances, the choice between a strongly
5
6
7 favoured and a strongly disfavoured alternative might be particularly salient, and might
8
9 therefore be more amenable to strategic decisions based on beliefs about interlocutors'
10
11 likely understanding or preferences.
12
13
14

15 The work also adds insight onto the role that partner type (i.e. computer or
16
17 human) and design choices (such as voice anthropomorphism) have on levels of syntactic
18
19 alignment. Current findings in HCD suggest that many of our language behaviours are
20
21 mediated by our perceptions of computers as effective communication partners
22
23 (Amalberti, Carbonell, & Falzon, 1993; Bell & Gustafson, 1999; Brennan, 1998; Le
24
25 Bigot et al., 2007). In particular, research on alignment of lexical choice in HCD
26
27 (Bergmann, Branigan, & Kopp, in press; Branigan, Pickering, Pearson, McLean, &
28
29 Brown, 2011) suggests that users adapt their lexical choices to accommodate their
30
31 partner's perceived limitations as an interlocutor, with greater adaptation to partners
32
33 perceived as less able. Work on anthropomorphic robotic agents suggests that we see
34
35 such agents as more intelligent and capable than non-anthropomorphic agents (Kiesler,
36
37 Powers, Fussell, & Torrey, 2008; King & Ohya, 1996). This raises the possibility that
38
39 anthropomorphic cues in HCD scenarios may lead users to adapt less in these contexts
40
41 than when interacting with a computer partner with less anthropomorphic cues.
42
43
44
45
46
47
48
49

50 Validating the occurrence of syntactic alignment in speech-based HCD under
51
52 controlled experimental conditions, and demonstrating that characteristics of the partner
53
54 affect syntactic alignment, would provide evidence that computer partner utterances as
55
56 well as design can act as a means of inducing users to use predictable structures that the
57
58 system can process successfully. Importantly the work also has implications for the
59
60
61
62
63
64
65

1
2
3
4 understanding of what guides our linguistic choices in HCD. Demonstrating that syntactic
5
6 alignment is impacted by the anthropomorphism of the partner (and indeed by whether
7
8 the partner is a computer or human) would show that syntactic alignment, like other
9
10 language behaviours in HCD, is adaptive and influenced by our perceived limitations of
11
12 the system as a dialogue partner. In contrast, if we found that syntactic alignment occurs
13
14 in HCD but is unaffected by partner type, this would tentatively support the notion that
15
16 cognitive architectures involved in language comprehension and production and the
17
18 priming of language representations may play a role in syntax choice in HCD (Pickering
19
20 & Garrod, 2004).
21
22
23
24
25
26

27 In both experiments, native English speakers played a picture-naming and -
28
29 matching game with either a human, a computer with an anthropomorphic voice, or a
30
31 computer with a robotic voice. The computer voices used were shown to yield significant
32
33 differences in user perceptions of partner ability, with the anthropomorphic voice leading
34
35 people to see a computer partner as being more advanced, flexible and competent than
36
37 those hearing the robotic voice (see section 3). The participants and their partners took
38
39 turns describing pictures of dative events (Experiment 1) or colored patterned shapes
40
41 (Experiment 2), and choosing pictures in response to their partner's descriptions (in all
42
43 experiments the partner was either a human confederate or a computer controlled
44
45 remotely by a member of the experiment team). Two types of structural alternation were
46
47 tested across the experiments, each with two alternatives that were primed using the
48
49 partner's descriptions (Experiment 1: Prepositional Object (*PO*) or Double Object (*DO*);
50
51 Experiment 2: Adjective-Noun (*AN*) or Noun-Relative clause (*RC*)) with the
52
53 experimenter noting the structure that the participants used when producing their own
54
55
56
57
58
59
60
61
62
63
64
65

1 immediately subsequent description. Syntactic alignment is said to occur when
2
3
4
5
6
7 participants used the same structure as the prime they were previously exposed to. We
8
9 found that syntactic alignment occurred in both experiments, yet this effect was not
10
11 significantly impacted by the partner conditions. This supports the notion that automatic
12
13 priming of linguistic representations may play a significant role in alignment of syntax
14
15 choice in HCD.
16
17
18
19

20 **2. BACKGROUND**

21 **2.1 Alignment in Human-Human Dialogue**

22
23
24
25
26
27
28 A large body of evidence from HHD has shown that conversational partners
29
30 influence each other's behaviour. In particular, conversational partners show a robust
31
32 tendency to converge on, or *align*, their non-linguistic and linguistic behaviour, such as
33
34 posture and gestures (Chartrand & Bargh, 1999; Van Baaren, Janssen, Chartrand, &
35
36 Dijksterhuis, 2009), as well as semantic, lexical, and syntactic choices (Branigan,
37
38 Pickering, & Cleland, 2000; Brennan & Clark, 1996; Clark & Brennan, 1991; Garrod &
39
40 Anderson, 1987; Pickering & Branigan, 1998). Alignment of language has been
41
42 hypothesised to play a causal role in successful communication: by aligning their
43
44 linguistic representations in production and comprehension, interlocutors also come to
45
46 develop aligned situation models, or shared semantic representations of the topic under
47
48 discussion, and hence mutual understanding (Garrod & Pickering, 2009; Pickering &
49
50 Garrod, 2004). By corollary, communication is likely to be less successful if speakers do
51
52 not align their language use (Reitter & Moore, 2007). Behavioural alignment has also
53
54 been argued to act as a social glue, heightening social bonds and increasing liking
55
56
57
58
59
60
61
62
63
64
65

1
2
3
4 between interlocutors (Chartrand & Bargh, 1999; Giles, Coupland, & Coupland, 1991;
5
6
7 Van Baaren et al., 2009).

8
9
10 Although it is uncontroversial that alignment of language is widespread and
11
12 robust in HHD, there is less agreement concerning its underlying mechanisms. One
13
14 account suggests that alignment is largely automatic and unconscious (Pickering &
15
16 Garrod, 2004, 2006). Under this account, alignment in HHD occurs because linguistic
17
18 representations are activated whenever conversational partners produce or comprehend
19
20 utterances, and residual activation or implicit learning of these representations leads to an
21
22 increased chance of their subsequent use (Branigan et al., 2000; Chang, Dell, & Bock,
23
24 2006). That is, alignment arises from automatic priming of linguistic representations that
25
26 occurs in non-interactive as well as interactive contexts (e.g., Chang et al., 2006; Meyer
27
28 & Schvaneveldt, 1971). This account makes no reference to non-linguistic factors (such
29
30 as speakers' beliefs about their interlocutors), and characterizes alignment as an
31
32 automatic consequence of the cognitive architecture of language processing.
33
34
35
36
37
38
39

40
41 An alternative account proposes that alignment on particular linguistic choices in
42
43 HHD may be mediated by speakers' beliefs about their interlocutors (e.g. Branigan,
44
45 Pickering, Pearson, McLean, & Brown, 2011; Brennan & Clark, 1996). In this account,
46
47 alignment is seen as a manifestation of audience design (Bell, 1984). One facet of
48
49 audience design is that speakers plan their utterances with reference to their beliefs about
50
51 what the listener will understand. Thus they choose between linguistic alternatives
52
53 according to their model of their interlocutors' knowledge and abilities. This *interlocutor*
54
55 *model* may be based on assumptions about the communities to which they believe their
56
57 interlocutor belongs (e.g., resident of Edinburgh, non-native speaker of English, wine
58
59
60
61
62
63
64
65

aficionado) and the knowledge that these communities are assumed likely to have (Clark, 1996; Fussell & Krauss, 1992), as well as calculations about what the interlocutor is likely to understand given their previous observed language use (Branigan et al., 2011). For instance, if a non-native speaker has previously used an unconventional name for an object (e.g., *chair that goes backwards and forwards* instead of *rocking chair*), her interlocutor may align on the same name to enhance the likelihood of mutual understanding, on the basis that the non-native speaker probably does not understand the conventional name (otherwise she would have used it) but clearly does understand *chair that goes backwards and forwards* (as evidenced by the fact that she has just used that term; Bortfeld & Brennan, 1997).

Of course, these two explanations for alignment effects are not mutually exclusive. Alignment may well have both unmediated and mediated components that manifest themselves to differing extents in different contexts for different aspects of language (Branigan, Pickering, Pearson, & McLean, 2010). For example, in communicative contexts in which mutual understanding between interlocutors is paramount (e.g., safety-critical situations), beliefs about what the interlocutor is likely to understand correctly may play a particularly strong role in alignment.

Recently, studies have used HCD interactions to explore these theoretical positions, comparing levels of alignment with human and computer partners (further details of this work is included in section 2.2). This is based on the fact that computers are more likely to be judged as less communicatively able compared to human partners (Branigan et al., 2003). Our research extends this work on how syntactic alignment is impacted by perceptions of partner abilities by using spoken HCD interactions.

Furthermore, rather than solely observing overall differences between computers and human partners, we also explore how design cues within HCD interactions may affect these alignment levels and as such how these theoretical accounts operate within an HCD context. Evidence that syntactic alignment is affected by partner type (e.g. human vs. computer) and by computer partner design would support a more mediated account to syntactic alignment in HHD and HCD, whereas no effect of partner would lend support to a more automatic mechanism being influential in syntactic alignment in HCD interactions.

2.2 Alignment in Human-Computer Dialogue

Recent research has shown that alignment occurs for some aspects of language in HCDs (see Branigan et al., 2010 for a review). For example, speakers show alignment of voices with computer interlocutors on prosodic and acoustic speech features (Bell, Gustafson, & Heldner, 2003; Levitan et al., 2012; Oviatt, Darves, & Coulston, 2004; Suzuki & Katagiri, 2007). Work has also shown that users align at a lexical level with computer partners (Bergmann et al., in press; Branigan et al., 2011; Brennan, 1996; Stoyanchev & Stent, 2009). In addition, both more naturalistic (Stoyanchev & Stent, 2009) and laboratory research investigating text-based dialogues (Branigan et al., 2003) has shown that speakers align syntactically in HCD. Research by Stoyachev & Stent (2009) using the Let's Go! dialogue system found that more action verbs were present in user responses when the system used such verbs in their system prompts. The trend to reuse a partner's syntax was also noted in recent research observing children playing a dialogue game with robot partners (Nalin et al., 2012). Controlled experimental studies of

1 syntactic alignment in text-based HCD using a similar picture naming and matching
2
3
4 game as in the current study (Branigan et al., 2003) also showed that people tended to
5
6 align syntactically with computers. As noted above, much of the previous literature has
7
8 been focused on more naturalistic interactions where confounding factors that might
9
10 affect the magnitude of alignment are difficult to control. Previous controlled
11
12 experimental work on syntactic alignment in HCD has also concentrated on text-based
13
14 interactions, where research has shown lower levels of syntactic structure sharing
15
16 compared to speech-based interactions. Our work validates and extends previous
17
18 naturalistic work by using controlled experimentation in a speech-based interaction
19
20 context to control for confounds through the experimental materials (e.g. ensuring no
21
22 boost to alignment associated with lexical repetition [see Branigan, Pickering and Cleland
23
24 2000], controlling the turns between prime and target, balancing the exposure to prime
25
26 structures across the game) and set up (e.g. using a wizard of oz procedure to ensure no
27
28 impact of speech recognition errors). In addition the use of speech-based interaction
29
30 increases the relevance of the work to the growing use of speech as a popular interface
31
32 modality.
33
34
35
36
37
38
39
40
41
42
43

44 **2.3 Partner effects on alignment in Human-Computer Dialogue**

45
46
47 Evidence from alignment of lexical choices in HCDs highlights the possibility for
48
49 effects of partner identity on alignment under at least some circumstances. Branigan et al.
50
51 (2011) had participants take part in a picture-naming and -matching task with a partner
52
53 that they believed to be a human or a computer (in fact, it was always a pre-scripted
54
55 computer). With both kinds of partner, participants tended to name objects using the
56
57
58
59
60
61
62
63
64
65

1
2
3
4 same name that their partner had previously used (e.g., calling an object a *seat* vs. a
5
6 *bench*), in both text-based and spoken interaction. The tendency to align lexical choice
7
8 was robust and persistent, occurring even when the name was normally strongly
9
10 disfavoured (produced spontaneously less than 20% of the time in a non-biasing context),
11
12 and when their partner had named the object eight turns earlier. Crucially, however,
13
14 alignment was stronger when participants believed that they were interacting with a
15
16 computer than a human. This pattern was replicated in German by Bergmann et al. (in
17
18 press), and contrasts with previous suggestions that lexical alignment occurs at similar
19
20 levels in HHD and HCD (Brennan, 1996; although note that unlike Branigan et al.'s
21
22 (2011) and Bergmann et al.'s (in press) experiments, Brennan's study did not statistically
23
24 compare HHD and HCD directly). Moreover, participants' tendency to align with a
25
26 computer partner was affected by superficial aspects in the interaction (i.e., aspects
27
28 unrelated to the system's actual behaviour): participants who began the task by viewing a
29
30 start-up screen with a 1987 copyright along with a fictitious review from a computer
31
32 magazine stating its limited abilities ('Basic' computer) showed a stronger tendency to
33
34 align than participants who viewed a start-up screen with a current year copyright and
35
36 review stating the system's sophisticated technology ('Advanced' computer).
37
38
39
40
41
42
43
44
45

46
47 Branigan et al. (2011) suggested that participants' tendency to align on lexical
48
49 choice was influenced by their beliefs about what their interlocutor would be likely to
50
51 understand based on perceived identity and non-functional aspects of the interaction.
52
53 Overall, participants took an interlocutor's prior use of a name as evidence that the
54
55 interlocutor would understand that name correctly; participants therefore chose to use that
56
57 name, to facilitate successful understanding. But they did so to a greater extent when
58
59
60
61
62
63
64
65

1
2
3
4 interacting with a computer because computers are generally believed to be less
5
6 communicatively able than humans, and therefore more prone to misunderstanding
7
8 (Branigan et al., 2003). Moreover, the stronger alignment with a 'Basic' than an
9
10 'Advanced' computer suggests that participants' beliefs about interlocutor ability (and in
11
12 turn participants' linguistic behaviour) were affected by superficial cues, specifically a
13
14 system suggesting age and limited functions versus a system suggesting modernity and
15
16 extensive functions. These beliefs were apparently established at the outset of the
17
18 interaction and not updated on the basis of the interlocutors' actual behaviour during the
19
20 interaction (in all conditions, the interlocutor always displayed successful understanding
21
22 of the participants' lexical choice by correctly choosing the object named by the
23
24 participant). These results therefore suggest not only that people may display different
25
26 linguistic behaviour when interacting with computers than with humans, but also that
27
28 system design could engender these behavioural differences by affecting users'
29
30 expectations about the computer's abilities as an interlocutor in HCD.
31
32
33
34
35
36
37
38
39
40

41 The finding that people aligned to different extents depending on whether they
42
43 believed their interlocutor to be a computer or a human is consistent with previous
44
45 research suggesting significant differences in linguistic behaviour in HCDs versus HHDs.
46
47 Amalberti, Carbonell, & Falzon (1993) showed that when people took part in a telephone
48
49 conversation concerning air-fares and timetables, their linguistic behaviour differed
50
51 depending on whether they believed their partner to be a human or a computer. Thus
52
53 when interacting with a computer, people tended to use fewer fillers and coherence
54
55 markers, provided less information, used more words, and tended to solve problems on
56
57 their own rather than using linguistic means to clarify ambiguities and increase
58
59
60
61
62
63
64
65

1
2
3
4 understanding. Kennedy, Wilkes, Elder, & Murray (1988) reported similar findings,
5
6 whereby participants tended to use ‘simpler’ utterances (reduced use of pronominal
7
8 anaphors, more basic lexical choices, and shorter utterances) in HCD than in HHD.
9
10 Similarly, people tend to use simple syntactic structures when interacting linguistically
11
12 with animated computer-based agents (Bell & Gustafson, 1999). People’s preconceptions
13
14 of the system’s capability have also been shown to be integral to how users form their
15
16 speech when interacting with speech dictation software, for example with respect to
17
18 hyperarticulation as well as phonological and lexical adjustments (Meddeb & Frenz-
19
20 Belkin, 2010).
21
22
23
24
25
26

27 Such findings suggest users’ models of the computer’s competencies as a
28
29 dialogue actor may guide their linguistic behaviour in HCD. In fact, users’ perceptions of
30
31 their interlocutors’ abilities have consistently been proposed as a significant determinant
32
33 of linguistic adaptation in HCD (Amalberti et al., 1993; Brennan, 1998; Le Bigot et al.,
34
35 2007). That is, linguistic behaviour in HCDs is assumed to be fundamentally guided by
36
37 beliefs about the characteristics of the computer (and failures in establishing accurate
38
39 beliefs have been identified as a particular cause of communicative breakdown in HCDs;
40
41 Brennan, 1998), although it is not clear how such beliefs may be established in the first
42
43 place. Branigan et al. (2011)’s experiments suggest that system design could play some
44
45 role by influencing people’s perceptions of system abilities, with superficial (non-
46
47 functional) features giving rise to different interlocutor models, and as such could impact
48
49 levels of alignment in dialogue.
50
51
52
53
54
55
56

57 In sum, much of the research on language use in HCD has highlighted a
58
59 significant impact of partner modelling on our language choices. Many of the studies
60
61
62
63
64
65

1
2
3
4 have observed how our language use varies when interacting with humans and computers,
5
6
7 be it the use of simpler syntactic structures, anaphora or lexical choice. Yet little attention
8
9 has been given to the role partner modelling may play specifically in alignment of
10
11 syntactic structure, and how these may be affected by design decisions. As in previous
12
13 experimental research on lexical alignment, we wish to see whether syntactic alignment
14
15 is sensitive to partner type and superficial cues, consistent with other HCD research.
16
17 Importantly, rather than focusing on the superficial cues of system age and reviews as in
18
19 previous lexical alignment research, we examine the role that design of the interlocutor
20
21 may have on perceptions and levels of syntactic alignment. Understanding this has
22
23 significant practical value for those wishing to leverage syntactic alignment effects in
24
25 guiding spoken dialogue system user inputs.
26
27
28
29
30

31 32 **2.4 Voice anthropomorphism and partner modelling**

33
34
35

36 As highlighted, the work of Branigan et al. (2011) supports a potential role for
37
38 non-functional, superficial cues to impact levels of alignment in HCD, through impacting
39
40 our model of the partner's dialogue competence. Such models may be impacted by the
41
42 design of the interlocutor. Research on anthropomorphism in robot and computer agents
43
44 has shown that people rate anthropomorphised robotic agents as more lifelike (Kiesler et
45
46 al., 2008), and that anthropomorphic agents are rated as more intelligent and capable
47
48 (King & Ohya, 1996). Users have also been shown to treat computer partners using
49
50 anthropomorphic prompts more similarly to a human social partner, using more second
51
52 person pronouns compared to computer partners using other, less anthropomorphic,
53
54 prompts (Brennan & Ohaeri, 1994). Indeed seminal research in HCI highlights our
55
56
57
58
59
60
61
62
63
64
65

tendency to behave similarly towards computer partners as we do towards human partners in aspects such as politeness (Fogg & Nass, 1997; Nass, Steuer, & Tauber, 1994) and using voice as a social actor identity cue (Nass et al., 1994). This work led us to focus on the potential of voice anthropomorphism in affecting user assumptions of partner ability in spoken HCD interactions. Using an anthropomorphic voice for a computer dialogue partner may make the computer appear more akin to a human conversational partner not only in the form of the output, but also in ascribed communicative competences. In other words, having a human-like voice may lead users to believe that the computer has more advanced communicative capabilities.

Although previous work suggests that anthropomorphism is likely to affect user attributions, it is not specific about the aspects of the agent that impact such attributions. The work presented here therefore tests the role of the voice specifically (see section 3: Manipulation Check below). This not only disambiguates the impact voice may have from other anthropomorphised attributes of an agent but also addresses a design decision that is highly relevant to speech interfaces more generally. To preview our results, we show that people rate an *Anthropomorphic* computer voice as more advanced, flexible and competent than a less anthropomorphic *Robotic* computer voice. This supports previous research mentioned above and demonstrates that voice anthropomorphism specifically affects users' perception of interlocutor competence and thus may have an impact on levels of alignment in HCD.

2.5 Partner-based effects for syntactic alignment?

Although beliefs about an interlocutor may be decisive in determining some

linguistic choices, it may not play a strong role in determining others. There is evidence that this may be the case for grammatical choices in at least some circumstances.

Branigan, Pickering, Pearson, McLean, & Nass (2003) had participants play a similar text-based picture-naming and -matching task to that used by Branigan et al. (2011), except that participants described and matched pictures of dative events (e.g., showing, giving) rather than naming individual objects. When participants described events that involved the same action as the event that their partner had just described, they showed a stronger tendency to align syntactic structure with a ‘computer’ than a ‘human’ interlocutor, as Branigan et al. (2011) found for lexical choices. But when participants described events that involved a different action to their partner’s description, they aligned syntactic structure with their partner to the same extent irrespective of whether they believed that their partner was a computer or a human. Thus they were as likely to use a *double object (DO)* structure (e.g., *The waitress is showing the doctor the cup*) after their partner used a DO structure (e.g., *The cowboy is handing the jug to the clown*) and a *prepositional object (PO)* structure (e.g., *The waitress is showing the cup to the doctor*) after their partner used another PO structure when they believed they were interacting with a human as when they believed they were interacting with a computer. This discrepancy is intriguing, and suggests that speakers’ linguistic choices in HCDs may not always be guided by beliefs about their interlocutors: when structural alternatives are not salient (as they may have been in Branigan et al., 2003, when the action - and hence verb - were repeated), speakers may not necessarily accommodate their interlocutors’ perceived capabilities. Taking these results together with existing evidence about the role of partner modelling in affecting lexical alignment and adaptation in HCD more generally

(highlighted in section 2.3), it is clear that the role of partner modelling on users' syntactic choices in HCD, and specifically their tendency to syntactically align, needs further investigation.

2.6 Research Aims & Hypotheses

As described in section 1, the research aims to investigate magnitudes of syntactic alignment in HCD compared to HHD through controlled experimentation as well as its potential to impact user's strong default syntactic preferences. It also aims to explore the role of interlocutor identity and design cues such as voice anthropomorphism on the extent of syntactic alignment, independent of potential confounding factors. Such findings are not only informative about how design decisions about the system as a conversational partner causally impact user attributions and behaviour in HCD, but also whether these decisions, or indeed partner type (i.e. computer or human) itself, affect users' alignment behaviour, concordant with findings highlighting user-system adaptation in HCD and the sensitivity of lexical alignment to partner characteristics in HCD.

To facilitate comparisons with previous research, the two experiments that we report here use the same type of controlled experimental paradigm used in previous related research in HHD (Cleland & Pickering, 2003), which has also been shown to be sensitive to the effects of users' beliefs on language behaviour (Branigan et al., 2003). In our studies, we asked participants to interact with another human, a computer with a highly anthropomorphic voice, or a computer with a monotone 'robotic' voice (each tested in the manipulation check presented in section 3) to play a picture-description and matching game. The participants and their partners took turns describing pictures of

1
2
3
4 dative events (Experiment 1) or colored patterned shapes (Experiment 2) for their partner,
5
6
7 and choosing pictures in response to their partner's descriptions. We manipulated the
8
9 grammatical structure of the partners' (scripted) descriptions (Experiment 1:
10
11 Prepositional Object (*PO*) or Double Object (*DO*)- similar in terms of default preference;
12
13 Experiment 2: Adjective-Noun (*AN*) or Noun-Relative clause (*RC*)- *AN* being heavily
14
15 preferred), and examined whether participants used the same structure that they had just
16
17 heard when producing their own immediately subsequent description. We further
18
19 examined whether any such tendency was affected by the identity of the partner, with
20
21 greater alignment predicted for partners that might be believed to be communicatively
22
23 less able, on the basis of identity (human vs. computer) or design (anthropomorphic vs.
24
25 robotic voice).

26
27
28
29
30
31
32 We hypothesise that there will be a significant alignment effect in both
33
34 experiments. Based on findings of lexical alignment and other HCD research we also
35
36 hypothesise that there will be a significant effect of partner type on the magnitude of
37
38 alignment, specifically that larger magnitudes of alignment will be seen in the computer
39
40 partner conditions compared to the human partner condition, and that alignment will be
41
42 significantly higher in the robotic compared to the anthropomorphic computer partner
43
44 conditions. We also hypothesise that the influence of partner type on alignment may vary
45
46 across the structures tested in Experiment 1 and 2 due to the difference in salience
47
48 between structural alternatives. That is, the effect of partner type on alignment may be
49
50 higher when structural alternatives used by the partner vary strongly in their use in a null
51
52 context, making it more salient to the user when their partner is alternating between
53
54 common and uncommon structures, with people aligning more with computer partners to
55
56
57
58
59
60
61
62
63
64
65

1
2
3
4 ensure communication success in this context. However if no statistically significant
5
6 effects of partner are found, this may support a more automatic, priming-based view of
7
8 syntactic alignment in HCD.
9

10 11 12 **3. MANIPULATION CHECK** 13 14

15
16 Before conducting the main research, people's initial beliefs about the abilities of
17
18 a computer as a conversation partner were measured in a study to verify that design
19
20 considerations such as voice anthropomorphism do significantly affect user judgments, as
21
22 suggested by previous research.
23
24

25
26 A sample of 63 participants (35 women, 28 men) with a mean age of 24.33 years
27
28 (S.D.= 4.13 years) were recruited via campus-wide emails from the University of
29
30 Birmingham and Edinburgh staff and student communities to take part in the research.
31
32 All participants were adult native English speakers.
33
34
35

36
37 The study involved participants listening to audio clips of one of six possible
38
39 computer voices (a male and female version was created for each of the three voice
40
41 types) describing 8 objects, in a between-participants design (i.e., each participant
42
43 experienced only one voice). Similar to the experiments in section 4 and 5, a between-
44
45 participants design was used. This was so that the study reflected as much as possible the
46
47 scenario of interacting with a single dialogue partner, a common scenario in natural HCD
48
49 interactions, rather than comparing multiple partners in one interaction. In the *Robotic*
50
51 *voice* condition, descriptions were produced in a 'robotic' and monotone voice that
52
53 lacked natural intonation. The audio recordings of descriptions used for this voice were
54
55 created using the Fred (for the male version) and Kathy (for the female version) voice
56
57
58
59
60
61
62
63
64
65

options on the text-to-speech program Vox Machina 1.1 for Mac. The *Anthropomorphic voice* condition used audio recordings of the descriptions given by a computer voice producing human-like speech. The audio used for this condition was created using the voice Nick (for the male voice condition) and Nina (for the female voice condition) from the University of Edinburgh's Centre for Speech Technology Research (CSTR) Festival text-to-speech system (<http://www.cstr.ed.ac.uk/projects/festival/>). An extreme anthropomorphic voice (the *Human voice* condition) was also used in the experiment. It was created using recordings of a male and female member of the experiment team describing the same 8 objects. In all conditions participants were told that the voices heard were computer-generated voices.

Participants were asked to complete a questionnaire about the voices they heard, consisting of 15 items. Participants were given the statement "If a computer system used this voice to speak to me, I'd think it was" and were asked to rate the computer system on perceptions of its advanced nature (Basic-Advanced), capability (Capable-Incapable), cost (Cheap-Expensive), quality (Good-Bad), flexibility (Inflexible-Flexible), power (Lacking in Power- Powerful), speed (Quick-Slow), stability (Stable-Unstable), professionalism (Amateurish- Professional), modernity (Up to date- Old Fashioned), efficiency (Efficient-Inefficient), trustworthiness (Untrustworthy-Trustworthy), competence (Incompetent-Competent), controllability (Controllable-Uncontrollable) and complexity (Simple-Complex). All items were measured using a 7-point semantic differential scale. Items were taken from previous metrics used in the HCI (Hassenzahl, 2001) and wider literature (Osgood, 1957) in addition to specific items, such as the item probing the basic vs. advanced nature of the computer system, that were added for the

1
2
3
4 current study to test if the voices mapped onto perceptions of computers as basic and
5
6 advanced interlocutors (Branigan et al., 2011). The presentation sequence of
7
8 questionnaire items was individually randomized for each participant.
9
10

11
12 Participants were recruited via email. Participants were invited to take part in an
13
14 online study investigating opinions of computer voices in which they would listen to 8
15
16 audio clips of a computer voice and then complete a short questionnaire about the voice
17
18 they just heard. A link to the online questionnaire was also included in the original
19
20 recruitment email. After accessing the online questionnaire through the link, users
21
22 listened to 8 audio clips of one of six types of computer voice. They were then asked to
23
24 rate the voice they had just heard on the 15 questionnaire items. After completing the
25
26 questionnaire they were presented with a debrief page to explain the motivations of the
27
28 study and were thanked for taking part in the research.
29
30
31
32
33
34
35

36 Due to the violation of multivariate normality, a robust version of MANOVA
37
38 using permutation testing (Anderson, 2001) was run using the vegan package (Oksanen et
39
40 al., 2015) in R (R Core Team, 2014) to test the effects of voice type and voice gender
41
42 across the 15 items measured. Recent research has advised that robust statistical
43
44 approaches should be used above classical statistical approaches due to their increase in
45
46 statistical power and accuracy, especially (although not exclusively) in cases where
47
48 assumptions are violated (for a discussion of robust methods and their procedures see
49
50 Erceg-Hurn & Mirosevich, 2008; Field, Miles, & Field, 2012; Keselman, Algina, Lix,
51
52 Wilcox, & Deering, 2008). These were therefore used throughout the data analysis for
53
54
55
56
57
58
59
60
61
62
63
64
65

this manipulation check². The permutational MANOVA showed that there was a statistically significant main effect of voice type [$F(2,57) = 11.21, p = .001$]; however, there was no main effect of voice gender [$F(1,60) = 0.17, p > .05$] or interaction between voice gender and voice type [$F(2,60) = 0.93, p > .05$]. To identify the effects of voice on the dimensions of the questionnaire highlighted by the MANOVA, a robust One-Way ANOVA using 20% trimmed means with Winsorized variance and bootstrapping was run on each of the questionnaire items using the WRS2 package (Mair, Schoenbrodt, & Wilcox, 2014). Robust ANOVAs are used due to violation of the assumptions of normality and homogeneity of variance in much of the data analysed. In this situation modern robust approaches to ANOVA have been highlighted to be significantly more powerful than classic ANOVA approaches (see Erceg-Hurn & Mirosevic, 2008). Trimmed means and Winsorized variance are used to control for the potential influence of outliers, and the combination of these techniques and bootstrapping have been shown to result in better control of Type I error when classical test assumptions are violated (Keselman et al., 2008). For brevity only those that showed a statistically significant difference are reported.

There were significant differences between participants' ratings of the computer voices on the Basic-Advanced [$F_t = 10.44, p = .001$], Capable-Incapable [$F_t = 9.49, p < .001$], Cheap-Expensive [$F_t = 13.64, p < .001$], Good-Bad [$F_t = 16.52, p < .001$], Inflexible-Flexible [$F_t = 10.95, p = .002$], Lacking in Power-Powerful [$F_t = 20.04, p < .001$], Amateur-Professional [$F_t = 11.55, p = .002$], Up to date-Old Fashioned [$F_t = 31.07, p < .001$],

² Classic parametric tests (i.e. MANOVA and One Way ANOVA) were also conducted concurrently with the robust analyses used in this section with similar results being attained. Due to the desire to control Type I error as well as maximize statistical power in the context of assumptions of normality and homogeneity of variance being violated, the results of the robust tests are reported.

Untrustworthy-Trustworthy [$F_t=11.26$, $p=.002$], Incompetent-Competent [$F_t=9.88$, $p<.001$] and Simple-Complex [$F_t=5.63$, $p=.006$] items.

Robust post-hoc tests showed that, compared to the *Robotic* voice condition, participants rated a computer using the *Anthropomorphic* computer voice as significantly more advanced ($p=.008$), expensive ($p=.008$), good ($p=.002$), flexible ($p=.002$), powerful ($p<.001$), professional ($p=.003$), up to date ($p<.001$) and competent ($p=.002$).

Compared to the *Robotic* voice condition, participants also rated a computer using the *Human* voice condition as more advanced ($p<.001$), capable ($p<.001$), expensive ($p<.001$), good ($p<.001$), flexible ($p<.001$), powerful ($p<.001$), professional ($p<.001$), up to date ($p<.001$), trustworthy ($p<.001$), competent ($p<.001$) and complex ($p=.01$).

| Dimension | Voice | N | Mean | S.D. |
|-------------------|-----------------|----|------|------|
| Basic-Advanced | Anthropomorphic | 21 | 3.23 | 0.85 |
| | Robotic | 21 | 2.08 | 0.81 |
| | Human | 21 | 4.08 | 0.92 |
| Capable-Incapable | Anthropomorphic | 21 | 3.46 | 0.51 |
| | Robotic | 21 | 4.00 | 0.84 |
| | Human | 21 | 2.62 | 0.51 |
| Cheap-Expensive | Anthropomorphic | 21 | 3.31 | 0.50 |
| | Robotic | 21 | 2.08 | 0.81 |
| | Human | 21 | 4.31 | 0.87 |
| Good-Bad | Anthropomorphic | 21 | 3.54 | 0.51 |
| | Robotic | 21 | 4.92 | 1.26 |
| | Human | 21 | 2.46 | 0.51 |

| | | | | |
|---------------------------|-----------------|----|------|------|
| Inflexible-Flexible | Anthropomorphic | 21 | 3.46 | 1.17 |
| | Robotic | 21 | 2.15 | 0.77 |
| | Human | 21 | 4.08 | 0.87 |
| Lacking in Power-Powerful | Anthropomorphic | 21 | 3.62 | 0.51 |
| | Robotic | 21 | 2.39 | 0.51 |
| | Human | 21 | 4.39 | 0.83 |
| Quick-Slow | Anthropomorphic | 21 | 3.77 | 0.48 |
| | Robotic | 21 | 4.46 | 1.59 |
| | Human | 21 | 3.54 | 0.51 |
| Stable-Unstable | Anthropomorphic | 21 | 3.23 | 1.24 |
| | Robotic | 21 | 3.54 | 1.17 |
| | Human | 21 | 2.85 | 0.83 |
| Amateurish-Professional | Anthropomorphic | 21 | 3.92 | 0.87 |
| | Robotic | 21 | 2.31 | 0.81 |
| | Human | 21 | 4.54 | 1.21 |
| Up To Date-Old Fashioned | Anthropomorphic | 21 | 4.15 | 1.30 |
| | Robotic | 21 | 6.08 | 0.81 |
| | Human | 21 | 2.69 | 0.87 |
| Efficient-Inefficient | Anthropomorphic | 21 | 3.31 | 1.12 |
| | Robotic | 21 | 3.85 | 1.27 |
| | Human | 21 | 3.23 | 0.85 |
| Untrustworthy-Trustworthy | Anthropomorphic | 21 | 4.31 | 0.50 |
| | Robotic | 21 | 3.62 | 0.51 |
| | Human | 21 | 5.31 | 0.87 |

| | | | | |
|-----------------------------|-----------------|----|------|------|
| Incompetent-Competent | Anthropomorphic | 21 | 4.77 | 0.79 |
| | Robotic | 21 | 3.69 | 0.87 |
| | Human | 21 | 5.31 | 0.50 |
| Controllable-Uncontrollable | Anthropomorphic | 21 | 3.77 | 0.79 |
| | Robotic | 21 | 2.92 | 0.87 |
| | Human | 21 | 3.15 | 0.89 |
| Simple-Complex | Anthropomorphic | 21 | 2.46 | 0.51 |
| | Robotic | 21 | 1.92 | 0.87 |
| | Human | 21 | 3.39 | 0.87 |

Table 1: Trimmed means and Winsorized standard deviations for each item by condition

A computer using the *Human* voice condition was rated as significantly more capable ($p=.025$), expensive ($p=.008$), good ($p=.002$), up to date ($p=.01$), trustworthy ($p=.007$) and complex ($p=.03$) compared to the *Anthropomorphic* voice condition. All other comparisons were not statistically significant ($p > .05$). The trimmed means and Winsorized standard deviations of the sample are displayed in Table 1.

The findings of the manipulation check provide evidence that participants judged computers that use the voices in the experiment differently on dimensions that are likely to impact their views of the computers' abilities as effective interlocutors. Importantly the *Anthropomorphic* computer voice was rated as more advanced, flexible and competent than the *Robotic* voice, with the *Anthropomorphic* and *Human* voices not differing statistically on these dimensions. The *Anthropomorphic* condition also led participants to rate a computer using this voice as more expensive, good, powerful, professional and up-

1
2
3
4 to-date than participants experiencing the *Robotic* voice condition. The most extreme
5
6 anthropomorphic computer voice (i.e. the *Human* voice) led people to rate a computer as
7
8 more capable, competent and flexible when compared to a more robotic-sounding voice.
9
10 Unsurprisingly the *Human* voice also led to users to believe it to be more trustworthy,
11
12 capable and up-to-date and expensive when compared to the speech synthesized
13
14 *Anthropomorphic* voice.
15
16
17
18
19

20 The manipulation check extends previous research suggesting that people see
21
22 anthropomorphic agents as more capable and intelligent (Kiesler et al., 2008; King &
23
24 Ohya, 1996) by showing that people can make judgments about anthropomorphism of
25
26 agents on the basis of voice, and that these judgments in turn affect judgments of
27
28 attributes such as ability. It also demonstrates that the voices used in the following
29
30 experiments map onto advanced and basic judgments that are suggested to influence
31
32 lexical alignment (Branigan et al., 2011). The following experiment (Experiment 1) used
33
34 the *Anthropomorphic* and *Robotic* voice conditions tested in this manipulation check to
35
36 observe the potential impact of user's beliefs on syntactic alignment, because they were
37
38 generated using speech synthesis and thus most comparable to voices likely to be used in
39
40 current speech interface design.
41
42
43
44
45
46
47

48 **4. EXPERIMENT 1**

49
50

51 Experiment 1 set out to establish whether alignment of syntactic structure occurs
52
53 in speech-based HCI, and whether this is influenced by judgments of partner competence
54
55 based on superficial (i.e. non-functional) aspects such as voice type. The study used the
56
57 dative (PO/DO) alternation, which has been extensively studied in previous speech-based
58
59
60
61
62
63
64
65

HHD and text-based HCD alignment research (Branigan et al., 2003). If people behave in speech-based HCD in the same way as in speech-based HHD, then we would expect to find a significant syntactic alignment effect, so that participants would be more likely to use a PO structure if their partner had just used another PO structure than if their partner had just used a DO structure. Moreover, if this alignment effect were affected by beliefs about the communicative ability of the dialogue partner, then we would expect significantly stronger alignment with computer partners than with human partners (as in Branigan et al., 2011); if such beliefs were in turn affected by interlocutor design considerations such as voice anthropomorphism, then we would further expect differences between the anthropomorphic and robotic voice conditions when compared to the human condition, with greater alignment predicted with robotic voices than anthropomorphic voices.

4.1 Method

4.1.1 Participants

A sample of 42 participants (23 women, 19 men) with a mean age of 23.34 years (S.D. = 4.19 years) took part in the research. All participants were recruited from the University of Birmingham community with both staff and students from a wide range of disciplines taking part in the research. All participants were adult native English speakers. They were given £5 as an honorarium for taking part in the research.

4.1.2 Communication Game

Participants completed a communication game with a partner. Conversational partners took turns to describe images to their partner (*describing turn*) and to choose from a pair of displayed pictures an image that matched their partner's description (*matching turn*). The dyad comprised of a naïve participant and a confederate (human or pre-scripted computer). The confederate used pre-specified grammatical structures (primes) when describing their pictures. The participants were not made aware that their partner was a confederate until after the end of the session. On a matching turn, participants listened to their partner's (i.e. the confederate's) utterance (the prime) and clicked on the picture that matched that description from the images in front of them. On a describing turn, participants described the image displayed in front of them (the target).

4.1.3 Communication Game Items

24 experimental items were included in the game, each comprising a description of a picture (a *prime sentence*, uttered by the confederate), a *match picture* (a picture that matched the confederate's prime sentence, seen in the participant's matching turn), a *distractor picture* (displayed with the match picture during the participant's matching turn), and a *target picture* (displayed on the participant's describing turn for the participant to describe - see Figure 1 for an example image). The 24 prime sentences occurred in two conditions (PO: e.g. *The chef handing the jug to the waitress* vs. DO: e.g. *The chef handing the waitress the jug*). The match and target pictures each depicted a dative event involving an agent, patient and beneficiary. Below each picture was a present-tense verb in capital letters (which participants were instructed to use in their

target descriptions). There were four prime sentences (and 4 related match pictures) and four target pictures for each of the six verbs (*give, hand, offer, sell, show, throw*). The event depicted in the target picture always involved different entities and a different action from the event depicted in the prime picture. Distractor pictures involved a mixture of dative and monotransitive events, and were selected randomly on each trial from a pool of 48 filler pictures also used for filler trials (see below; 30 monotransitive events involving 18 monotransitive verbs, each used between two and four times: *pull, kick, hit, hold, lift chase, kiss, punch, eat, scold, shoot, drop, push, catch, tickle, touch, polish, follow*; 18 dative events involving the six experimental verbs).



Figure 1 - Example experiment item picture. Such a picture can be described either as “the cowboy offering the robber the banana” (Double Object-DO) or “the cowboy offering the banana to the robber” (Prepositional Object-PO).

48 filler items were also included in the game. These items were used to mask the focus of the game being on the experimental items. As with the experimental items, they comprised of a description of a picture (description of a monotransitive event uttered by the confederate), a match picture (seen by the participant in a matching turn that was a match to the confederate's description), a distractor picture (involving a monotransitive or dative event, displayed with the match picture to the participant in a matching turn), and a target picture to be described by the participant in their describing turn to the partner (i.e. the confederate). Crucially the target picture was of a monotransitive event, rather than a ditransitive event as in the experimental items (see Figure 2). Pictures for the target and match pictures in these items were taken from the pool of 48 filler pictures described above.



Figure 2- Example monotransitive filler item picture “The waitress kicking the robber”.

We constructed two lists, each containing one version of each experimental item: 12 of each prime condition (PO or DO prime), as well as all the filler items. Experiment items in list 1 that had DO as their prime had PO as their prime in list 2 and vice versa. The prime condition was within subjects so as to observe participants' likelihood of using a particular structure in conditions where their partner in the same dialogue primed both that structure and an alternative grammatically acceptable structure equally. This helps rule out explanations for any priming effect, such as participants imprinting on one specific structure, which would exist if structures were primed between subjects. The list received by participants was balanced as much as possible within each condition. The order of experimental items and filler items was fixed for all participants with the distractor pictures being randomly assigned for each item. At least two filler items separated experimental items in each list. A flowchart of the turns for the confederate and the participant in the game are included in Figure 3.

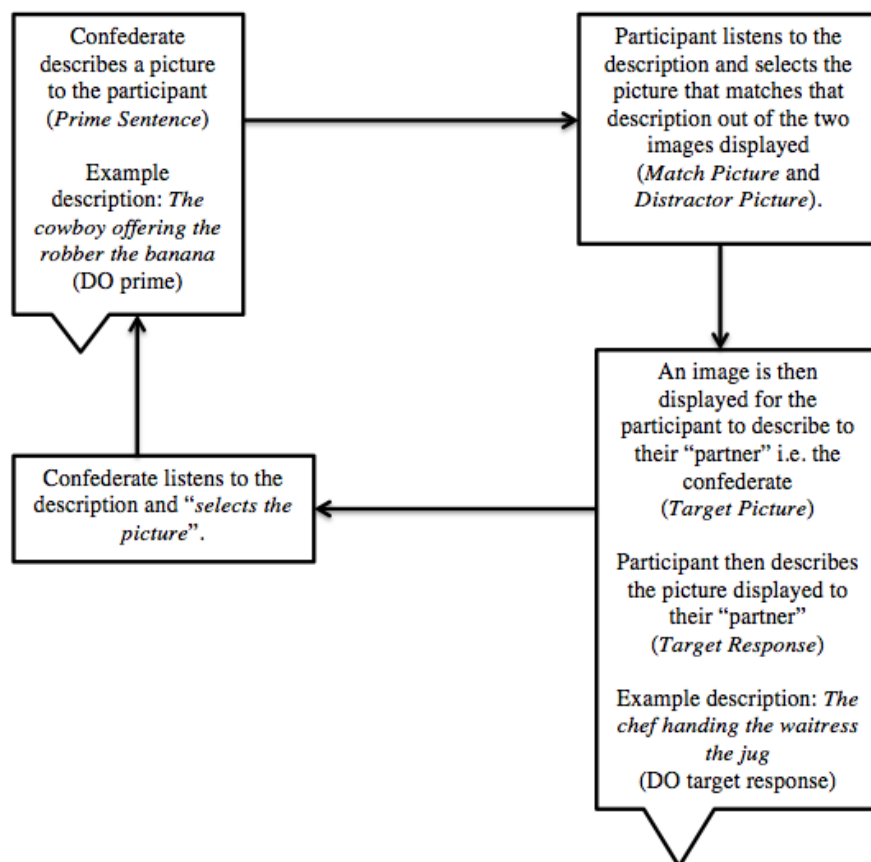


Figure 3- Flowchart of game interaction for experiment items. Filler items are identical apart from monotransitive descriptions are used in the prime sentence position and target pictures in the participant turn being of monotransitive events.

4.1.4 Interlocutor Conditions

The study included 3 interlocutor conditions (the levels of the independent variable *Interlocutor*) in a between-participants design. A between-participants design was used to ensure that the experiment session reflected as much as possible an interaction with a single dialogue partner, thus lending our findings increased ecological validity in simulating the context of more natural HCD scenarios. A within-participants

design would lead to comparisons to the other partner conditions and thus would impact the ecological validity of any potential partner-based effects to real world HCD contexts (in which people do not sequentially carry out the same task with human and computer partners). In addition we wished to ensure that user behaviours were not impacted by boredom or practice effects, a significant issue in using within-participant research in this context. In the *Human* condition, participants completed the task with a co-present human partner. This condition was included effectively as a control condition against which we could compare levels of alignment in the computer interlocutor conditions. In the *Robotic* computer condition, participants completed the task with a computer that projected a robotic voice. As in the manipulation check, the audio recordings of descriptions used for this voice were created using the Fred voice option on text-to-speech interface Vox Machina 1.1 for Mac. In the *Anthropomorphic* computer condition, participants completed the task with a computer using the anthropomorphic voice (Nick from the University of Edinburgh's Centre for Speech Technology Research (CSTR) Festival text-to-speech system). During the sessions the computer confederates were simulated using a wizard of oz procedure whereby a member of the experiment team controlled remotely the utterances that they used. A connection to the computer in the experiment session was established using Windows Remote Assistance. From this, the experimenter was able to control the computer in the experiment room remotely. The experimenter listened into the session using Skype on the participant's laptop and played audio clips of the relevant descriptions needed for participants to match their pictures on the lab-based machine, thus simulating a computer interlocutor being present in the room, similar to the human-human condition.

4.1.5 Procedure

Native English speaking participants were recruited via email from across the University of Birmingham staff and student community and were randomly assigned to one of the three conditions. Upon arrival, they were welcomed by the experimenter, given information about the task being conducted in the study and asked to give consent to take part in the research. The experimenter also checked whether the participant had taken part in any similar studies previously and if so they were informed that they could not take part in the research. The experimenter then informed the participant that they were leaving to get their partner ready and would return soon. The experimenter then returned and took the participant to the experiment lab where they were asked to take a seat on one side of a table. Upon initially entering the lab they could see their partner (and therefore identify whether it was a human or computer partner). During the experiment itself, the table was divided by a screen so that the participant could not see their interlocutor during the dialogue (and thus could not use non-verbal signals for communication). They were then asked to complete a demographic questionnaire (gathering data about their age, gender, whether they were a native English speaker and whether they suffered from any medical condition that would affect their ability to view computer screens safely). The criteria for participation were made clear in the recruitment email. The questions in the demographic questionnaire were used as a final check of these criteria. If participants stated that they were not native English speakers or suffered from a medical complaint, they were informed that they could not take part in the research.

Upon completion of the demographic questionnaire, participants were given information verbally and in written form by the experimenter about the game they were

1
2
3
4 about to play with a partner. The experimenter instructed the participant (and confederate
5
6
7 in the human condition) that the game involved each of them taking turns in being the
8
9
10 matcher and the describer of pictures. They were told the aim of the game was to describe
11
12 the picture in front of them (on describing turns), and to select the correct item described
13
14 to them by their partner (on matching turns), as quickly and as accurately as possible.
15
16
17 They were explicitly informed in these instructions whether they were playing with
18
19 another human participant (in the Human condition) or a computer (in the Robotic and
20
21 Anthropomorphic conditions). To familiarize participants with the game, they completed
22
23 a practice trial of four items.
24

25
26
27 The confederate always took the role of the describer (i.e. took a describing turn)
28
29 first and always understood participant's descriptions and matched the pictures. The
30
31 experimenter noted the syntactic structure (PO, DO or Other) of the participant's target
32
33 responses when describing the target item in the experiment item pair. A description was
34
35 scored as a "PO" if the theme of the action immediately followed the verb and was
36
37 followed by the preposition "to" and the beneficiary. A description was scored as a "DO"
38
39 if the beneficiary immediately followed the verb and was followed by the theme.
40
41
42 Responses not scored as either POs or DOs were scored as "Other". This data acts as the
43
44 categorical dependent variable *Target Response* in the analysis below. The sessions were
45
46 audio recorded so that on the rare occasion that the experimenter did not note down the
47
48 target responses they could be recovered. The experimenter then thanked and debriefed
49
50 the participants as to the motivations of the study.
51
52
53
54
55
56
57
58
59
60
61
62
63
64
65

4.2 Results

Of the 1008 target responses, 665 (65.97%) were coded as PO and 327 (32.44%) were coded as DO. There were 16 target responses (1.59%) coded as Other. These 16 data points were removed from the *Target Response* variable. The LME analysis used to analyze the data (see below) is robust to the inclusion of NA data in the dependent variable.

Table 2 shows the proportion of PO target responses as well as the number of PO target responses by condition. This is also shown graphically in Figure 4. The *alignment effect* is calculated as the difference between the proportion of PO target responses in the PO and DO prime conditions³.

| Condition | N | PO Primes | DO Primes | Alignment Effect |
|-----------------------|----|-----------|-----------|------------------|
| Human-Human | 14 | .72 (120) | .61 (101) | .12 |
| Human-Robotic | 14 | .80 (131) | .65 (106) | .15 |
| Human-Anthropomorphic | 14 | .73 (120) | .52 (87) | .20 |
| Total | 42 | .75 (371) | .59 (294) | .16 |

Table 2- Proportion and number of Prepositional Object (PO) target responses by condition

³ These represent the proportion of PO responses in the total number of PO and DO responses within each condition and as such the proportion of DO responses in each condition can be identified by subtracting the proportions displayed from 1.

1
2
3
4 Mixed effects logistic regression analysis was run on the data using the *lme4*
5
6
7 package (Version 1.1-7) (Bates, Maechler, Bolker, & Walker, 2014) in R (R Core Team,
8
9 2014) (Version 3.1.2). The analysis models the impact of fixed effects (e.g. prime,
10
11 interlocutor and interactions) on the log odds of a specific outcome (e.g. a PO target
12
13 response) occurring. It also facilitates the inclusion of random effects in the model that
14
15 can consider participant and item variation (by-participant and by-item random
16
17 intercepts) as well as the varying impacts of the fixed effects within these units (by-
18
19 participant and by-item random slopes) (see Barr, Levy, Scheepers & Tily, 2013 for a
20
21 detailed discussion). This allows us to more fully model potential individual item and
22
23 participant effects within the analysis as well as negating the need for separate item and
24
25 participant analyses previously used in psycholinguistic research (Barr, Levy, Scheepers,
26
27 & Tily, 2013; Clark, 1973).
28
29
30
31
32
33
34
35
36
37
38
39
40
41
42
43
44
45
46
47
48
49
50
51
52
53
54
55
56
57
58
59
60
61
62
63
64
65

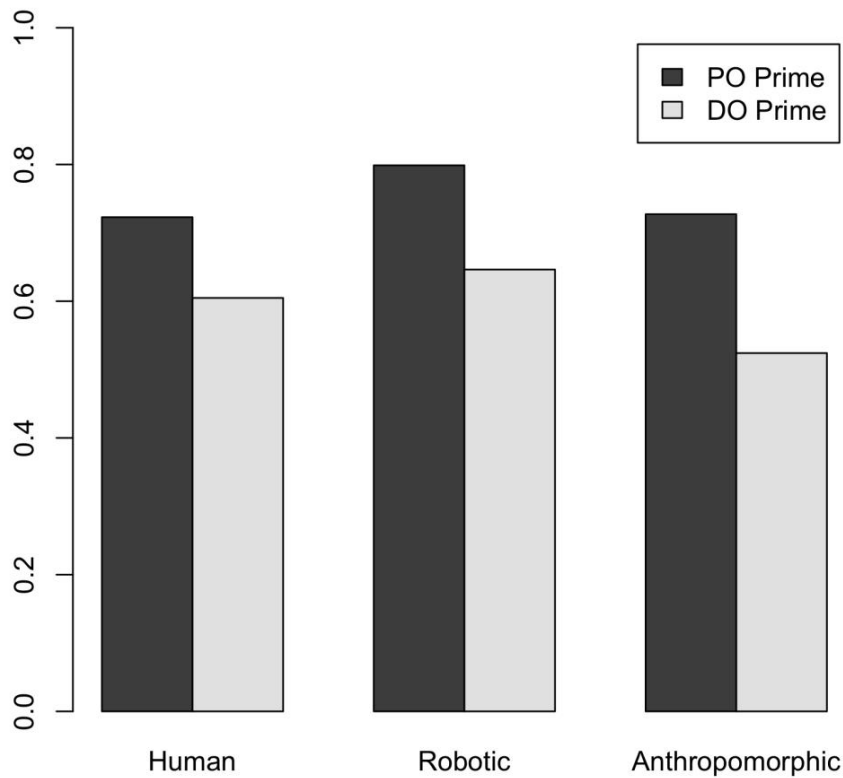


Figure 4 - Proportion of Prepositional Object (PO) target responses for Prepositional Object (PO-Black) and Double Object (DO-Grey) primes by Interlocutor condition.

The outcome variable *Target Response* was relevelled (using the `relevel()` function) to ensure that the model output refers to the likelihood of PO production. The Interlocutor and Primes variables were also relevelled to ensure that the Human and DO prime conditions acted as the base categories for comparison. The model and related *lme4* syntax are shown in Table 3. Due to issues with model convergence identified with using maximal models in mixed effects logistic regression analyses (Barr, Levy, Scheepers, &

Tily, 2013), the higher order within-item random slope for the *Prime:Interlocutor* interaction was removed to facilitate convergence. The final model includes within-participant random slopes for *Prime* and within-item random slopes for *Prime* and *Interlocutor*.

Model: $Target_Response \sim Prime + Interlocutor + Prime:Interlocutor + (1+Prime | Participant) + (1+ Prime | Item) + (1+ Interlocutor | Item)$

| Fixed Effects | Estimates | SE | Wald Z | P value |
|---|-----------|------|--------|---------|
| Intercept | 0.67 | 0.48 | 1.38 | .167 |
| Prime (PO) | 1.39 | 0.46 | 3.05 | .002 |
| Interlocutor (Anthropomorphic) | -0.51 | 0.66 | -0.77 | .442 |
| Interlocutor (Robotic) | 0.24 | 0.65 | 0.37 | .715 |
| Prime (PO): Interlocutor (Anthropomorphic) | 0.54 | 0.56 | 0.97 | .332 |
| Prime (PO):Interlocutor (Robotic) | 0.30 | 0.55 | 0.54 | .591 |

| Random Effects | SD |
|--------------------|------|
| <i>Participant</i> | |
| Intercept | 1.54 |
| Prime (PO) | 0.80 |
| <i>Item</i> | |
| Intercept | 0.22 |
| Prime (PO) | 0.92 |
| <i>Item</i> | |

| | |
|-----------------|------|
| Intercept | 0.71 |
| Anthropomorphic | 0.73 |
| Robotic | 0.19 |

Table 3 - Summary of fixed and random effects for Experiment 1 LME model

The model shows that there was a statistically significant increase in the likelihood of PO target descriptions being used in the PO prime condition compared to the DO prime condition ($z=3.05$, $p=.002$)⁴. There were no significant interactions between the Prime and Interlocutor levels (PO-Robotic: $z=0.54$, $p>.05$; PO-Anthropomorphic: $z=0.97$, $p>.05$). Thus there was no statistically significant difference between the alignment effect in the human and computer-based conditions, nor any effect of voice type on alignment levels when compared to the human condition. A summary of the fixed and random effects of the model is shown in Table 3.

4.3 Discussion

Experiment 1 found evidence of syntactic alignment in both human-human and human-computer speech-based dialogues. Participants showed a reliable tendency to more likely produce PO descriptions after hearing a PO description than after hearing a DO description. This tendency occurred to the same extent irrespective of whether participants interacted with a human or a computer interlocutor, and irrespective of whether the computer interlocutor's voice was anthropomorphic or robot-like.

⁴ To check that alignment and partner effects did not vary across the experiment an analysis including a fixed effect of *Time* (first vs. second half of communication game) was also conducted. Time did not significantly affect alignment or the effect of partner on alignment.

5. EXPERIMENT 2

Experiment 1 found no difference in the magnitude of people's syntactic alignment with computer versus human interlocutors, nor with computer interlocutors that had 'human-like' versus 'robot-like' voices. These results contrast with previous research on lexical alignment in human-computer dialogue, which showed stronger alignment with computer interlocutors than with human interlocutors, and with computers presented as more limited in ability than with computers presented as more advanced in ability (Branigan et al., 2011). This disparity might reflect a fundamental difference in the extent to which speakers draw on their interlocutor models when making lexical versus syntactic choices. However, an alternative explanation for the disparity between experiments may exist in differences in default preferences for the two alternatives between which speakers chose. Experiment 1 found equivalent alignment with computer and human interlocutors for syntactic choices that were relatively evenly balanced in terms of default preferences (roughly 60% PO, 40% DO; see Gries & Stefanowitsch, 2004; Pickering, Branigan, & McLean, 2002). In contrast, Branigan et al. (2011) found stronger alignment with less capable interlocutors, and with basic computers, for lexical choices that differed strongly in their default preferences (used spontaneously more than 80% vs. less than 20% in a non-biasing context).

In Experiment 2 we therefore examined syntactic alignment when one alternative structure was strongly favoured over the other. Specifically, rather than the Preposition (PO) and Double Object (DO) structures tested in Experiment 1, we compared syntactic alignment for *Adjective-Noun (AN)* and *Noun-Relative (RC)* clause structures (e.g., *the*

red square vs. *the square that's red*). Previous research on HHDs has shown that although syntactic alignment occurs for this structure pair, there is a very strong default preference for AN structures (around 95%) (Branigan et al., In Preparation), and the magnitude of alignment is correspondingly small (Cleland & Pickering, 2003). Experiment 2 therefore allowed us to test whether mechanisms of syntactic alignment in HCI are sufficiently influential to affect strong intrinsic structural preferences. In addition, under these circumstances the choice between a strongly favoured and a strongly disfavoured alternative might be particularly salient, and could therefore be more influenced by strategic decisions based on beliefs about interlocutors' likely understanding or preferences than the structures studied in Experiment 1. Thus we might expect to find more alignment with a computer than with a human interlocutor when one structure is normally strongly disfavoured, and – if the relevant beliefs are influenced by voice anthropomorphism – stronger alignment with a computer with a robotic voice than with a more human-like voice. However, if alignment occurred but identity of the interlocutor had no effect, this would further suggest that users' models of interlocutor abilities formed by superficial cues do not significantly impact speakers' syntactic choices in HCD under these conditions.

5.1 Method

5.1.1 Participants

A sample of 57 participants (30 women, 27 men) with a mean age of 21.30 years (SD= 3.76 years) from the University of Birmingham took part in the study. Participants were recruited from the staff and student community and came from a wide variety of

subject backgrounds. All were adult native English speakers. They were given a £7 honorarium for participation.

5.1.2 Communication Game Items

The communication game structure used in Experiment 1, where participants took turns to describe and match images, was again used in this study. In this experiment we prepared 72 experimental items, again with each experimental item comprising a prime description, a match picture, a distractor picture, and a target picture (see Figure 5 for example match picture used for prime descriptions). Rather than using the PO and DO structures in Experiment 2, the 72 prime descriptions occurred in two conditions (AN: *The red square* vs. RC: *The square that's red*). The materials used (i.e. the descriptions, match, distractor, and target pictures) varied from Experiment 1 in that they were modeled on those used in Cleland and Pickering (2003), and depicted a colored shape (shapes: *star, circle, square, heart, oval, diamond*; colors: *orange, red, blue, purple, green, yellow*). Each of the possible 36 combinations were used once as an RC prime and once as an AN prime for each participant. The target picture always involved a different color and shape from the prime picture. Distractor pictures differed from match pictures in color and shape (50%), shape (25%), or color (25%) to ensure that there was no consistency in the dimension(s) of difference that could lead to participants to assume that one or other description type would be more felicitous for their partner on their describing turn.

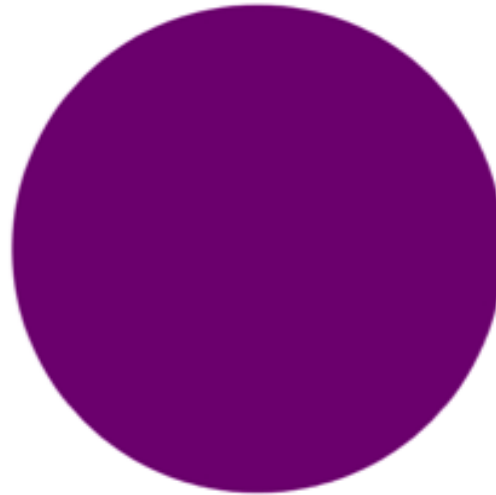


Figure 5 - Example experiment target picture. The picture can be described using “the purple circle” (Adjective-Noun) or “the circle that’s purple” (Relative Clause).

There were also 120 filler items with the same structure as the experimental items described above, thus containing a description by the confederate, a match picture, a distractor picture, and a target picture to be described (see Figure 6). Again, as in Experiment 1 these were used to mask the focus on the experiment being on the experiment items. To reflect similar dimension to the experiment items, the filler descriptions by the confederate (and the related match pictures), distractor and target pictures involved combinations of multiples of uncolored shapes (1, 2, 3, 4 or 5 shapes per picture), colors (*orange, red, blue, green, purple, yellow*), patterns (*stripy, wavy, dotted, chequered, zigzag, pitted*) and possible color-pattern combinations. This was so as to give consistency to the game. In total 192 items were experienced by each participant,

with the experimental items balanced for prime across the game (36 AN and 36 RC primes in total). The order of presentation was fixed for all participants with the constraint that at least one filler item separated each experimental item. Due to the dispreferred nature of RC structures, more items and participants were used in this experiment to increase the likelihood of RC structures being generated in the data, important to facilitating model convergence for the analysis.

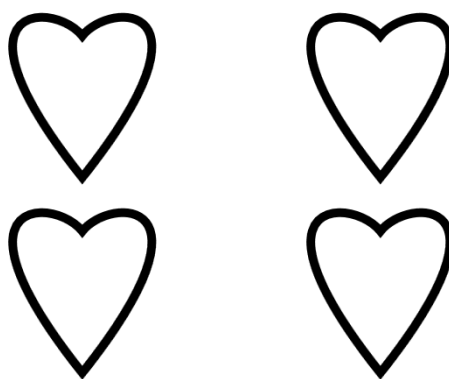


Figure 6- Example filler item target picture “four hearts”.

5.1.3 Interlocutor Conditions

The study again included 3 interlocutor conditions: *Human*, *Robotic* and *Anthropomorphic*. As in Experiment 1, the *Robotic* condition used the voice in the pre-test for the *Robotic* condition. Audio recordings of the experimental team were used to simulate the computer interlocutor in the *Anthropomorphic* condition. This was so as to amplify the anthropomorphism of the interlocutor voice as well as maximize the difference in anthropomorphism of the computer interlocutor’s voice compared to the *Robotic* condition. A computer using the type of *Anthropomorphic* voice used in this

experiment (i.e. the Human voice in the manipulation check mentioned in section 3) was rated as more advanced, flexible and competent compared to if a computer used the *Robotic* voice.

5.1.4 Procedure

The procedure was identical to Experiment 1. The experimenter noted the syntactic structure (AN, RC or Other) of the participant's target responses when describing the target picture in the experiment item. A description was scored as an "AN" if the adjective immediately preceded the noun (e.g. *the red circle* or *red circle*). A description was scored as an "RC" if it included a noun followed by a post-nominal phrase with the adjective (e.g. *the circle that's red*, *circle that is red*, *circle which is red*). Responses not scored as either ANs or RCs were scored as "Other".

5.2 Results

Of the total 4104 utterances, 3975 (96.86%) were AN and 88 (2.14%) were RC utterances. There were 41 (1.0%) target responses code as Other. These were removed from the *Target Response* variable. Table 4 shows the proportion of AN target responses in each *Interlocutor* and *Prime* condition. These are also shown graphically in Figure 7. The alignment effect was calculated as the difference between the proportion of AN target responses in the AN and RC prime conditions.

Table 4- Proportion and number of Adjective-Noun target responses by condition

| Condition | N | AN Primes | RC Primes | Alignment Effect |
|---------------------------|----|-------------|-------------|------------------|
| Human-Human | 19 | .997 (714) | .980 (695) | .017 |
| Human-Robotic | 19 | .990 (664) | .971 (657) | .019 |
| Human- Anthropomorphic | 19 | .985 (636) | .946 (609) | .039 |
| Total | 57 | .991 (2014) | .966 (1961) | .025 |

As in Experiment 1, mixed effects logistic regression was run using the *lme4* package, using the same model as Experiment 1. The outcome variable *Target Response* was relevelled to ensure that the model assessed likelihood of producing an AN response⁵. The Prime and Interlocutor variables were also relevelled as in Experiment 1.

⁵ Mixed effect logistic regression analysis was also run to assess the effect of prime and interlocutor on the likelihood of producing RC target responses. The findings from this analysis showed the same pattern, i.e., only a significant effect of prime; note that this analysis required simplification of the random effects structure to facilitate convergence. To keep consistency with previous syntactic alignment research and to use the model with more detailed random effects, the model assessing the likelihood of AN target responses is presented.

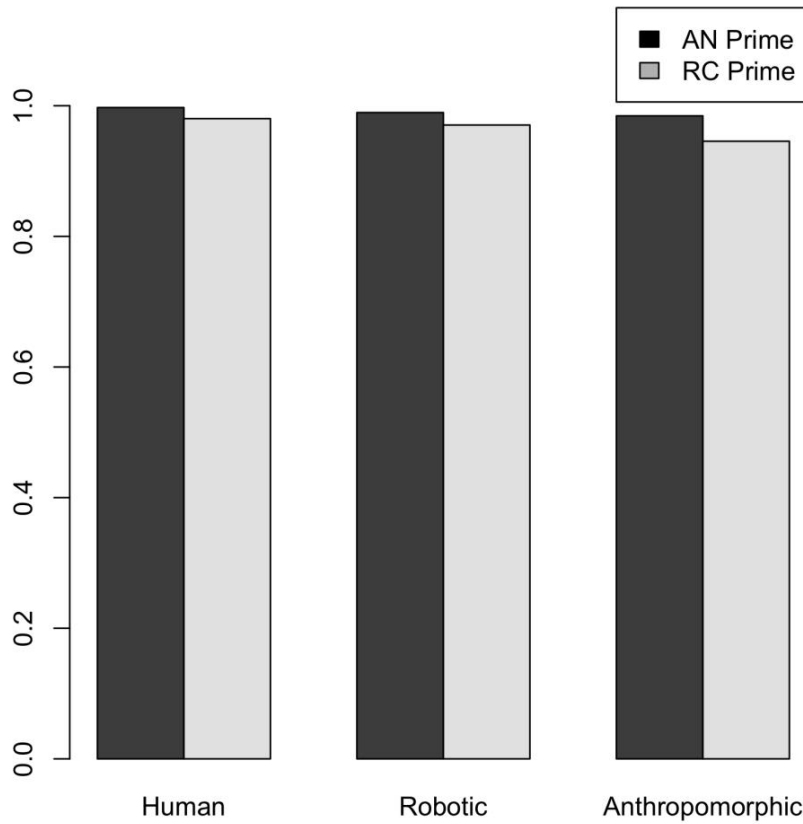


Figure 7- Proportion of Adjective Noun (AN) target responses for Adjective-Noun (AN-Black) and Relative Clause (RC-Grey) primes by Interlocutor condition.

The model showed that there was a significant effect of prime on likelihood of producing an AN target response, highlighting a higher likelihood of producing an AN response in the AN prime condition ($z = 2.21$, $p = .027$) than the RC condition⁶. Again there were no statistically significant interlocutor effects on alignment levels (AN-Robotic: $z = -0.68$, $p = .50$; AN-Anthropomorphic: $z = -0.44$, $p = .66$). The summary of fixed and random effects for the model is shown in Table 5.

⁶ As in Experiment 1, we ran an analysis including *Time* (first versus second halves of the experiment) as a fixed effect to observe temporal effects of alignment, however the same model did not converge.

Model: $Target_Response \sim Prime + Interlocutor + Prime:Interlocutor + (1+Prime | Participant) + (1+ Prime | Item) + (1+ Interlocutor| Item)$

| Fixed Effects | Estimates | SE | Wald Z | P value |
|---|-----------|------|--------|---------|
| Intercept | 5.27 | 0.70 | 7.51 | <.001 |
| Prime (AN) | 2.29 | 1.03 | 2.21 | .027 |
| Interlocutor (Robotic) | -0.61 | 0.83 | -0.74 | .46 |
| Interlocutor (Anthropomorphic) | -1.20 | 0.80 | -1.49 | .14 |
| Prime (AN): Interlocutor (Robotic) | -0.68 | 1.00 | -0.68 | .50 |
| Prime (AN): Interlocutor (Anthropomorphic) | -0.45 | 1.02 | -0.44 | .66 |

| Random Effects | SD |
|----------------|----|
|----------------|----|

Participant

| | |
|-----------|------|
| Intercept | 1.46 |
|-----------|------|

| | |
|------------|------|
| Prime (AN) | 0.82 |
|------------|------|

Item

| | |
|-----------|------|
| Intercept | 0.23 |
|-----------|------|

| | |
|------------|------|
| Prime (AN) | 0.23 |
|------------|------|

Item

| | |
|-----------|------|
| Intercept | 1.26 |
|-----------|------|

| | |
|---------|------|
| Robotic | 0.43 |
|---------|------|

| | |
|-----------------|------|
| Anthropomorphic | 0.94 |
|-----------------|------|

Table 5 -Summary of fixed and random effects in Experiment 2 LME Model

5.3 Discussion

Experiment 2 again found evidence of reliable syntactic alignment in both human-human and human-computer speech-based dialogues. Participants were more likely to produce AN target descriptions after hearing their interlocutor produce an AN description than after hearing an RC description. This tendency occurred to the same extent irrespective of whether participants interacted with a human or a computer interlocutor, and irrespective of whether the computer interlocutor's voice was human-like (in fact, a recording of a human voice) or robot-like.

6. GENERAL DISCUSSION

Speech-based interfaces are becoming increasingly important in the interactions between people and artificial systems. Relatively little is known about the factors that determine people's language use in HCD, and speech-based HCD in particular, although previous research has suggested that users' models of the system's capabilities (interlocutor models) may play an important role in HCD generally. We examined through two controlled experiments whether people's grammatical choices in speech-based HCD are affected by their experience of the system's grammatical choices, so that they tend to use the same grammatical structures as the system has just used. The studies acted as experimental validation for previous naturalistic studies on syntactic alignment in HCD (Stoyanchev & Stent, 2009) by facilitating the control of potential confounds to syntactic alignment in such studies. It also allowed us to identify whether findings related to syntactic alignment in text-based HCD extend to speech-based interactions, a highly relevant context in current interaction modality developments. The testing of syntactic

1
2
3
4 constructs that vary in their default preferences across the experiments not only allowed
5
6 us to generalize our findings, they also addressed the potential for alignment effects to
7
8 impact strong intrinsic structural preferences in syntax use. We further investigated
9
10 whether any such tendency might be influenced by users' beliefs about the system's
11
12 capability, and specifically the possible role of system design, focusing on voice
13
14 anthropomorphism. Participants interacted with a human or computer partner in a speech-
15
16 based task that involved describing and selecting pictures showing dative events or
17
18 colored patterned objects. The computer partners used voices that differed in their
19
20 anthropomorphism and that were rated as differing in their characteristics along
21
22 dimensions such as advanced nature, capability, modernity and efficiency.
23
24
25
26
27
28

29
30 The results of both experiments demonstrated that users' syntactic choices in
31
32 speech-based dialogue were affected by their interlocutors' linguistic behaviour on a
33
34 turn-by-turn basis. In Experiment 1, participants were more likely to produce PO
35
36 descriptions of dative events immediately after hearing their interlocutor produce a PO
37
38 description for an unrelated picture than after hearing a DO description; in Experiment 2,
39
40 participants were more likely to produce AN descriptions of objects immediately after
41
42 hearing their interlocutor produce an AN description for an unrelated object than after
43
44 hearing an RC description. In both experiments, this tendency was unaffected by the
45
46 perceived identity of the interlocutor: participants aligned to the same extent whether they
47
48 were interacting with a human interlocutor or computer interlocutor; similarly, they
49
50 aligned to the same extent with a computer interlocutor that had an anthropomorphic
51
52 voice as with a computer interlocutor that had a robot-like voice.
53
54
55
56
57
58
59

60 These results add to the growing body of evidence that people tend to align
61
62
63
64
65

1
2
3
4 aspects of their language with their conversational partners not only in HHDs, but also in
5
6 HCDs. Previous research has shown alignment of prosodic and acoustic features (Bell et
7
8 al., 2003; Levitan et al., 2012; Oviatt et al., 2004; Suzuki & Katagiri, 2007) and lexical
9
10 choice (Branigan et al., 2011; Brennan, 1996) in speech-based HCDs, and of lexical
11
12 (Branigan et al., 2011; Brennan, 1996) and syntactic choice (Branigan et al., 2003) in
13
14 text-based HCDs. Our results show that users also align syntactically in speech-based
15
16 HCDs, and that this tendency occurs both for structural alternations in which the
17
18 alternatives are relatively balanced in their default preferences (PO/DO structures), and
19
20 for structural alternations in which one alternative is very strongly favoured (AN/RC
21
22 structures). Previous research has shown that lexical alignment in human-computer
23
24 interaction can affect very strong preferences (Branigan et al., 2011). The current study
25
26 found much weaker alignment on disfavoured syntactic structures. Nevertheless, this
27
28 increase was significant, and suggests that in HCDs as well as in HHDs, even very strong
29
30 default preferences may be impacted by an interlocutor's linguistic behaviour.
31
32
33
34
35
36
37
38
39
40

41 This result has important implications for research on HCD, especially as the use
42
43 of speech and natural dialogue as an interaction modality grows in popularity. One of the
44
45 motivations for the current research was to investigate the potential for exploiting
46
47 alignment to shape users' linguistic interactions with artificial systems (Bell et al., 2003;
48
49 Stoyanchev & Stent, 2009). The fact that users syntactically align with their partners in
50
51 speech-based HCD underlines the potential for the system's linguistic behaviours to
52
53 implicitly guide the user into using specific syntactic structures in less constrained HCDs,
54
55 leading to a predictable element of speech behaviours that can be modeled in speech
56
57 recognition. Such modelling may lead to considerable reduction in recognition errors and
58
59
60
61
62
63
64
65

1
2
3
4 thus increase the likelihood of successful communication. Moreover, we have shown that
5
6 syntactic alignment occurs in speech based interactions where the computer interlocutor
7
8 and human partner are co-present, a relevant scenario to developments in speech-based
9
10 dialogue interactions with devices as well as robotic and embodied conversational agents,
11
12 supporting findings highlighting alignment in text-based interactions where partners are
13
14 not co-present (Branigan et al., 2003). The work importantly lends experimental
15
16 validation to more naturalistic studies that have found syntactic alignment in human-
17
18 computer dialogue scenarios (Stoyanchev & Stent, 2009). From the alternative
19
20 perspective of dialogue generation, our results support previous proposals (based on
21
22 evidence from HHD) that engineering systems to produce output that aligned with their
23
24 human interlocutors would yield more naturalistic dialogues (Brockmann, Isard,
25
26 Oberlander, & White, 2005). Overall, our research suggests that syntactic alignment
27
28 could be leveraged in automated interlocutor systems to improve recognition and
29
30 comprehension of the users' behaviour, as well as to yield more naturalistic output by the
31
32 system, and thus ultimately to improve communication success (Pickering & Garrod,
33
34 2004).
35
36
37
38
39
40
41
42
43

44 These experiments also contribute to understanding the mechanisms of language
45
46 behaviours in HCDs. As natural speech grows as an interaction modality in HCI, we need
47
48 to develop an understanding of the causal mechanisms that govern our linguistic
49
50 behaviours within this modality, to give us a sound and generalizable basis for future
51
52 systems development. Earlier less controlled and more naturalistic studies found
53
54 differences in language use between HHDs and HCDs (Amalberti et al., 1993; Kennedy
55
56 et al., 1988) that suggested that users' linguistic choices in HCD are affected by their
57
58
59
60
61
62
63
64
65

beliefs about the computer's abilities, and some researchers have accordingly suggested that interlocutor models strongly influence language use in HCD (Amalberti et al., 1993; Brennan, 1998). Evidence that people are more likely to repeat their interlocutor's word choices when they believe that their interlocutor is less capable (computer vs. human; 'basic' computer vs. advanced computer; Branigan et al., 2011) is consistent with this hypothesis. But our experiment-based research, similar in ethos to seminal HCI work by Nass, Steuer, & Tauber (1994) and Nass & Moon (2000), suggests that other factors may also influence language use in these contexts. Specifically, the finding that people tended to align with their interlocutors' syntactic choices, but to the same extent with computer as with human interlocutors (and irrespective of design cues that have been demonstrated to impact judgments of ability, i.e., computer voice), is consistent with current models of HHD that suggest part of the alignment effect may be due to automatic priming mechanisms that do not specifically involve interlocutor modelling in determining speakers' language behaviour (Garrod & Pickering, 2009; Pickering & Garrod, 2004). In this account, people tend to repeat their interlocutors' language choices partly due to the processing of those choices automatically facilitating their subsequent re-use. This account explains why speakers repeat syntactic choices in non-interactive contexts (Bock, 1986) as well as interactive contexts (Branigan et al., 2000; Cleland & Pickering, 2003). The fact that we found similar syntactic behaviour irrespective of interlocutor type gives tentative support to the importance of considering such an account in an HCD context. Our experiments indicate that a factor to be considered in our understanding of user language behaviour in HCD may be the relative accessibility of relevant structures, specifically facilitation of one alternative through prior exposure (i.e. priming); we would

1
2
3
4 similarly expect that other language-internal factors that have been shown to affect
5 syntactic choice in HHDs (e.g., given vs. new information status; Clark & Haviland,
6 1977) could also affect syntactic choice in HCDs, although further research
7 demonstrating this empirically is needed to support such a claim.
8
9

10
11
12
13
14
15 We stress that this does not mean that users' syntactic choices, and in particular
16 their tendency to make the same choices as their interlocutor, is always automatic and
17 impervious to beliefs. Our experiments examined speakers' choices between the PO/DO
18 alternation and the AN/RC alternation. Although these structures differ in relative
19 preferences (neither alternative is strongly favoured in the PO/DO alternation, whereas
20 there is a strong preference for the AN in the AN/RC alternation), both alternations of the
21 two structure types do not differ greatly in complexity (for example, all four structures
22 are acquired relatively early in childhood; Brown, 1973; Campbell & Tomasello, 2001).
23
24
25
26
27
28
29
30
31
32
33
34
35
36
37
38
39
40
41
42
43
44
45
46
47
48
49
50
51
52
53
54
55
56
57
58
59
60
61
62
63
64
65
66
67
68
69
70
71
72
73
74
75
76
77
78
79
80
81
82
83
84
85
86
87
88
89
90
91
92
93
94
95
96
97
98
99
100
101
102
103
104
105
106
107
108
109
110
111
112
113
114
115
116
117
118
119
120
121
122
123
124
125
126
127
128
129
130
131
132
133
134
135
136
137
138
139
140
141
142
143
144
145
146
147
148
149
150
151
152
153
154
155
156
157
158
159
160
161
162
163
164
165
166
167
168
169
170
171
172
173
174
175
176
177
178
179
180
181
182
183
184
185
186
187
188
189
190
191
192
193
194
195
196
197
198
199
200
201
202
203
204
205
206
207
208
209
210
211
212
213
214
215
216
217
218
219
220
221
222
223
224
225
226
227
228
229
230
231
232
233
234
235
236
237
238
239
240
241
242
243
244
245
246
247
248
249
250
251
252
253
254
255
256
257
258
259
260
261
262
263
264
265
266
267
268
269
270
271
272
273
274
275
276
277
278
279
280
281
282
283
284
285
286
287
288
289
290
291
292
293
294
295
296
297
298
299
300
301
302
303
304
305
306
307
308
309
310
311
312
313
314
315
316
317
318
319
320
321
322
323
324
325
326
327
328
329
330
331
332
333
334
335
336
337
338
339
340
341
342
343
344
345
346
347
348
349
350
351
352
353
354
355
356
357
358
359
360
361
362
363
364
365
366
367
368
369
370
371
372
373
374
375
376
377
378
379
380
381
382
383
384
385
386
387
388
389
390
391
392
393
394
395
396
397
398
399
400
401
402
403
404
405
406
407
408
409
410
411
412
413
414
415
416
417
418
419
420
421
422
423
424
425
426
427
428
429
430
431
432
433
434
435
436
437
438
439
440
441
442
443
444
445
446
447
448
449
450
451
452
453
454
455
456
457
458
459
460
461
462
463
464
465
466
467
468
469
470
471
472
473
474
475
476
477
478
479
480
481
482
483
484
485
486
487
488
489
490
491
492
493
494
495
496
497
498
499
500
501
502
503
504
505
506
507
508
509
510
511
512
513
514
515
516
517
518
519
520
521
522
523
524
525
526
527
528
529
530
531
532
533
534
535
536
537
538
539
540
541
542
543
544
545
546
547
548
549
550
551
552
553
554
555
556
557
558
559
560
561
562
563
564
565
566
567
568
569
570
571
572
573
574
575
576
577
578
579
580
581
582
583
584
585
586
587
588
589
590
591
592
593
594
595
596
597
598
599
600
601
602
603
604
605
606
607
608
609
610
611
612
613
614
615
616
617
618
619
620
621
622
623
624
625
626
627
628
629
630
631
632
633
634
635
636
637
638
639
640
641
642
643
644
645
646
647
648
649
650
651
652
653
654
655
656
657
658
659
660
661
662
663
664
665
666
667
668
669
670
671
672
673
674
675
676
677
678
679
680
681
682
683
684
685
686
687
688
689
690
691
692
693
694
695
696
697
698
699
700
701
702
703
704
705
706
707
708
709
710
711
712
713
714
715
716
717
718
719
720
721
722
723
724
725
726
727
728
729
730
731
732
733
734
735
736
737
738
739
740
741
742
743
744
745
746
747
748
749
750
751
752
753
754
755
756
757
758
759
760
761
762
763
764
765
766
767
768
769
770
771
772
773
774
775
776
777
778
779
780
781
782
783
784
785
786
787
788
789
790
791
792
793
794
795
796
797
798
799
800
801
802
803
804
805
806
807
808
809
810
811
812
813
814
815
816
817
818
819
820
821
822
823
824
825
826
827
828
829
830
831
832
833
834
835
836
837
838
839
840
841
842
843
844
845
846
847
848
849
850
851
852
853
854
855
856
857
858
859
860
861
862
863
864
865
866
867
868
869
870
871
872
873
874
875
876
877
878
879
880
881
882
883
884
885
886
887
888
889
890
891
892
893
894
895
896
897
898
899
900
901
902
903
904
905
906
907
908
909
910
911
912
913
914
915
916
917
918
919
920
921
922
923
924
925
926
927
928
929
930
931
932
933
934
935
936
937
938
939
940
941
942
943
944
945
946
947
948
949
950
951
952
953
954
955
956
957
958
959
960
961
962
963
964
965
966
967
968
969
970
971
972
973
974
975
976
977
978
979
980
981
982
983
984
985
986
987
988
989
990
991
992
993
994
995
996
997
998
999
1000

1
2
3
4
5
6
7
8
9
10
11
12
13
14
15
16
17
18
19
20
21
22
23
24
25
26
27
28
29
30
31
32
33
34
35
36
37
38
39
40
41
42
43
44
45
46
47
48
49
50
51
52
53
54
55
56
57
58
59
60
61
62
63
64
65
66
67
68
69
70
71
72
73
74
75
76
77
78
79
80
81
82
83
84
85
86
87
88
89
90
91
92
93
94
95
96
97
98
99
100
101
102
103
104
105
106
107
108
109
110
111
112
113
114
115
116
117
118
119
120
121
122
123
124
125
126
127
128
129
130
131
132
133
134
135
136
137
138
139
140
141
142
143
144
145
146
147
148
149
150
151
152
153
154
155
156
157
158
159
160
161
162
163
164
165
166
167
168
169
170
171
172
173
174
175
176
177
178
179
180
181
182
183
184
185
186
187
188
189
190
191
192
193
194
195
196
197
198
199
200
201
202
203
204
205
206
207
208
209
210
211
212
213
214
215
216
217
218
219
220
221
222
223
224
225
226
227
228
229
230
231
232
233
234
235
236
237
238
239
240
241
242
243
244
245
246
247
248
249
250
251
252
253
254
255
256
257
258
259
260
261
262
263
264
265
266
267
268
269
270
271
272
273
274
275
276
277
278
279
280
281
282
283
284
285
286
287
288
289
290
291
292
293
294
295
296
297
298
299
300
301
302
303
304
305
306
307
308
309
310
311
312
313
314
315
316
317
318
319
320
321
322
323
324
325
326
327
328
329
330
331
332
333
334
335
336
337
338
339
340
341
342
343
344
345
346
347
348
349
350
351
352
353
354
355
356
357
358
359
360
361
362
363
364
365
366
367
368
369
370
371
372
373
374
375
376
377
378
379
380
381
382
383
384
385
386
387
388
389
390
391
392
393
394
395
396
397
398
399
400
401
402
403
404
405
406
407
408
409
410
411
412
413
414
415
416
417
418
419
420
421
422
423
424
425
426
427
428
429
430
431
432
433
434
435
436
437
438
439
440
441
442
443
444
445
446
447
448
449
450
451
452
453
454
455
456
457
458
459
460
461
462
463
464
465
466
467
468
469
470
471
472
473
474
475
476
477
478
479
480
481
482
483
484
485
486
487
488
489
490
491
492
493
494
495
496
497
498
499
500
501
502
503
504
505
506
507
508
509
510
511
512
513
514
515
516
517
518
519
520
521
522
523
524
525
526
527
528
529
530
531
532
533
534
535
536
537
538
539
540
541
542
543
544
545
546
547
548
549
550
551
552
553
554
555
556
557
558
559
560
561
562
563
564
565
566
567
568
569
570
571
572
573
574
575
576
577
578
579
580
581
582
583
584
585
586
587
588
589
590
591
592
593
594
595
596
597
598
599
600
601
602
603
604
605
606
607
608
609
610
611
612
613
614
615
616
617
618
619
620
621
622
623
624
625
626
627
628
629
630
631
632
633
634
635
636
637
638
639
640
641
642
643
644
645
646
647
648
649
650
651
652
653
654
655
656
657
658
659
660
661
662
663
664
665
666
667
668
669
670
671
672
673
674
675
676
677
678
679
680
681
682
683
684
685
686
687
688
689
690
691
692
693
694
695
696
697
698
699
700
701
702
703
704
705
706
707
708
709
710
711
712
713
714
715
716
717
718
719
720
721
722
723
724
725
726
727
728
729
730
731
732
733
734
735
736
737
738
739
740
741
742
743
744
745
746
747
748
749
750
751
752
753
754
755
756
757
758
759
760
761
762
763
764
765
766
767
768
769
770
771
772
773
774
775
776
777
778
779
780
781
782
783
784
785
786
787
788
789
790
791
792
793
794
795
796
797
798
799
800
801
802
803
804
805
806
807
808
809
810
811
812
813
814
815
816
817
818
819
820
821
822
823
824
825
826
827
828
829
830
831
832
833
834
835
836
837
838
839
840
841
842
843
844
845
846
847
848
849
850
851
852
853
854
855
856
857
858
859
860
861
862
863
864
865
866
867
868
869
870
871
872
873
874
875
876
877
878
879
880
881
882
883
884
885
886
887
888
889
890
891
892
893
894
895
896
897
898
899
900
901
902
903
904
905
906
907
908
909
910
911
912
913
914
915
916
917
918
919
920
921
922
923
924
925
926
927
928
929
930
931
932
933
934
935
936
937
938
939
940
941
942
943
944
945
946
947
948
949
950
951
952
953
954
955
956
957
958
959
960
961
962
963
964
965
966
967
968
969
970
971
972
973
974
975
976
977
978
979
980
981
982
983
984
985
986
987
988
989
990
991
992
993
994
995
996
997
998
999
1000

1
2
3
4 may lead the evaluation of interlocutor abilities to become highly salient, and thus give
5
6 rise to effects of interlocutor modelling on syntactic choice, including the likelihood of
7
8 syntactic alignment.
9

10
11
12 Equally, in our experiments the interlocutor always appeared to understand
13
14 participants correctly (to ensure that variation in the interlocutor's comprehension
15
16 behaviour did not confound our comparisons between different interlocutor identities and
17
18 system design features). A limitation of taking this approach is that the computer partner
19
20 is seen to understand both structures equally well, potentially leading there to be no
21
22 motivation to the user to use their partner model to change their behaviour. However, if
23
24 users' syntactic choices made reference to this partner model (in this case the belief that
25
26 the partner could understand both structures equally well and either structure could
27
28 therefore be used successfully without any danger of communication breakdown), we
29
30 would expect users to either consistently imprint on the first structure that they
31
32 encountered from the partner, or alternatively consistently use whichever structure they
33
34 normally preferred to use in a non-biasing context. Contrary to this, we found a
35
36 significant alignment effect in each study. This pattern of results is more consistent with
37
38 an automatic priming account of syntactic alignment. Nevertheless, further research
39
40 making the partner's limitations more salient through partner behaviour could lead to
41
42 more definitive conclusions about the role that partner modelling plays in syntactic
43
44 alignment, and syntactic choices in HCD more generally. For instance, if people
45
46 experienced miscommunication with an interlocutor, such as comprehension errors, this
47
48 might make the interlocutor's limitations more salient, so that speakers would show an
49
50 increased tendency to take the partner's capabilities into account when formulating
51
52
53
54
55
56
57
58
59
60
61
62
63
64
65

1
2
3
4 subsequent utterances, and thus align more strongly to the communication partner's
5
6
7 syntax. Communication breakdown might therefore trigger the use of interlocutor
8
9 modelling to choose between linguistic alternatives (including syntactic choices), as
10
11
12 Pickering and Garrod (2004) suggested.
13
14

15 In this research, response latencies of the confederate could not be measured
16
17 effectively because the confederate and participant game systems were not linked. High
18
19 turn-taking latencies are negatively correlated with levels of lexical as well as acoustic
20
21 and prosodic alignment in the observation of entrainment in corpora (Levitan et al., 2012;
22
23 Nenkova, Gravano, & Hirschberg, 2008). Although there is no evidence to suggest that
24
25 such latencies affect syntactic alignment specifically (and there is evidence in the relevant
26
27 psycholinguistic literature that priming effects may persist over many intervening
28
29 utterances; Bock & Griffin (2000)), we note that varying latencies in the sessions may
30
31 have impacted the levels of alignment in the experiment, and this remains an issue for
32
33 further investigation. A further limitation is that, as is common in wizard of oz and
34
35 confederate-based dialogue experiments in HCD, the confederates were not blind to the
36
37 conditions being tested, potentially impacting their behaviours in the dialogue
38
39 interactions. However we found no effect of partner in the studies, suggesting that such
40
41 an effect is not likely to strongly impact the validity of our findings.
42
43
44
45
46
47
48
49

50 We suggest that future work should extend this research in terms of both the
51
52 structures and the contexts investigated. First, it is important to examine a wider variety
53
54 of more complex syntactic structures, which might be more amenable to influences of
55
56 interlocutor modelling. Second, it is important to widen the context of study. The
57
58 communication task used in this research used images that could easily be described
59
60
61
62
63
64
65

1
2
3
4 using the two structures under investigation in the respective experiments. This allowed
5
6 controlled elicitation of the structures of interest, although of course it did not facilitate
7
8 alignment itself (as both structures could potentially be used to describe the experimental
9
10 items). However, it is important to also explore more naturalistic contexts and
11
12
13 interactions where pictures are not the main stimuli and where stimuli are not deliberately
14
15 designed to elicit the grammatical alternatives under investigation. Third, it is important
16
17 to investigate communicative contexts where the salience of partner abilities is more
18
19 marked than that tested here, as well as researching the impact of functional experiences
20
21 of the system on alignment behaviour. If interlocutor models were not found to be
22
23 impactful in these scenarios, it would further support the case to consider the role of low-
24
25 level cognitive mechanisms in determining people's language behaviour in HCDs
26
27 alongside interlocutor modelling suggested by previous research.
28
29
30
31
32
33

34 Finally, we suggest that our study has methodological implications for future HCI
35
36 related dialogue research. In conjunction with previous work on alignment in HCD
37
38 (Branigan et al., 2011, 2003), our experiments demonstrate that experimental
39
40 psycholinguistic methodology can be harnessed to study the impact of interlocutor design
41
42 in the development of dialogue systems, and moreover that it can be applied to the
43
44 increasingly important context of natural spoken HCD in which the computer is present
45
46 as an interlocutor. The laboratory-based approach adopted in the current study has
47
48 benefits in allowing a carefully controlled study of the effects of manipulating factors
49
50 such as voice anthropomorphism in ways that allow us to exclude potentially
51
52 confounding factors (e.g., by manipulating beliefs about a partner's ability whilst keeping
53
54 their actual behaviour constant; by controlling potentially important linguistic features
55
56
57
58
59
60
61
62
63
64
65

such as structural frequency). In addition, the use of similar methodology across both HCI and psycholinguistic fields allows for cross interpretation of findings that will likely accelerate the development of models, theoretical breakthrough and sharing of scientific knowledge across both the HCI and psycholinguistic domains. Controlled experiments of the kind reported here also offer a particularly powerful tool for validating findings from research focusing on more naturalistic contexts (Gilquin & Gries, 2009). Two important directions for future research are therefore to extend the current methodology to investigate other aspects of linguistic alignment in HCI contexts, and to examine whether the design-based findings replicate outside a laboratory context, for example by analyzing real-world corpora of HCD that use such design manipulations or by using experimental methods that place fewer restrictions on participants' language and interaction (Howes, Healey, & Purver, 2010) in such partner conditions.

In conclusion, we have shown through controlled experimentation that when people interact with computers using speech, they converge on their interlocutor's syntactic choices, supporting existing naturalistic research, and that the level of syntactic alignment is similar to when they interact with other people. However design aspects that have been shown to affect beliefs do not affect user syntactic choices, suggesting that levels of alignment of syntactic choices seem to be at least in part impacted by cognitive mechanisms rather than solely by interlocutor models.

7. ACKNOWLEDGEMENTS

The work was funded by the University of Birmingham Ramsay Fund and the British Academy. Holly P. Branigan was supported by a British Academy/Leverhulme

Senior Research fellowship. The authors would like to thank Charlie Pinder, Will Byrne and Manpreet Pangli for their data gathering work and Andrew Howes for his comments on previous drafts of the manuscript.

8. REFERENCES

- Amalberti, R., Carbonell, N., & Falzon, P. (1993). User representation of computer systems in human-computer speech interaction. *International Journal of Man-Machine Studies*, 38, 547–566.
- Anderson, M. J. (2001). A new method for non-parametric multivariate analysis of variance. *Austral Ecology*, 26, 32–46.
- Aylett, M. P., Kristensson, P. O., Whittaker, S., & Vazquez-Alvarez, Y. (2014). None of a CHInd: Relationship Counselling for HCI and Speech Technology. In *CHI '14 Extended Abstracts on Human Factors in Computing Systems* (pp. 749–760). New York, NY, USA: ACM.
- Barr, D. J., Levy, R., Scheepers, C., & Tily, H. J. (2013). Random effects structure for confirmatory hypothesis testing: Keep it maximal. *Journal of Memory and Language*, 68(3), 255–278.
- Barrett, J., & Jiang, Y. (2012). *Apple iPhone Siri Users* (Market Report). Dallas, Texas: Parks Associates.
- Bates, D., Maechler, M., Bolker, B., & Walker, S. (2014). lme4: Linear mixed-effects models using Eigen and S4. (Version 1.1-7).
- Bell, A. (1984). Language style as audience design. *Language in Society*, 13(02), 145–204.
- Bell, L., & Gustafson, J. (1999). Interaction with an animated agent in a spoken dialogue system. In *Proceedings of the Sixth European Conference on Speech Communication and Technology* (pp. 1143–1146). Budapest, Hungary: ISCA.
- Bell, L., Gustafson, J., & Heldner, M. (2003). Prosodic adaptation in human-computer interaction. In *Proceedings ICPhS 2003* (pp. 2453–2456). ISCA.
- Bergmann, K., Branigan, H. P., & Kopp, S. (in press). Exploring the alignment space – lexical and gestural alignment to real and virtual humans. *Frontiers in Human-Media Interaction*.
- Bock, J. K. (1986). Syntactic persistence in language production. *Cognitive Psychology*, 18(3), 355–387.
- Bock, K., & Griffin, Z. M. (2000). The persistence of structural priming: transient activation or implicit learning? *Journal of Experimental Psychology. General*, 129(2), 177–192.
- Bortfeld, H., & Brennan, S. E. (1997). Use and acquisition of idiomatic expressions in referring by native and non - native speakers. *Discourse Processes*, 23(2), 119–147.
- Branigan, H. P., McLean, J. F., Messenger, K., & Jones, M. (In Preparation). The nature of children's lexico-syntactic representations.

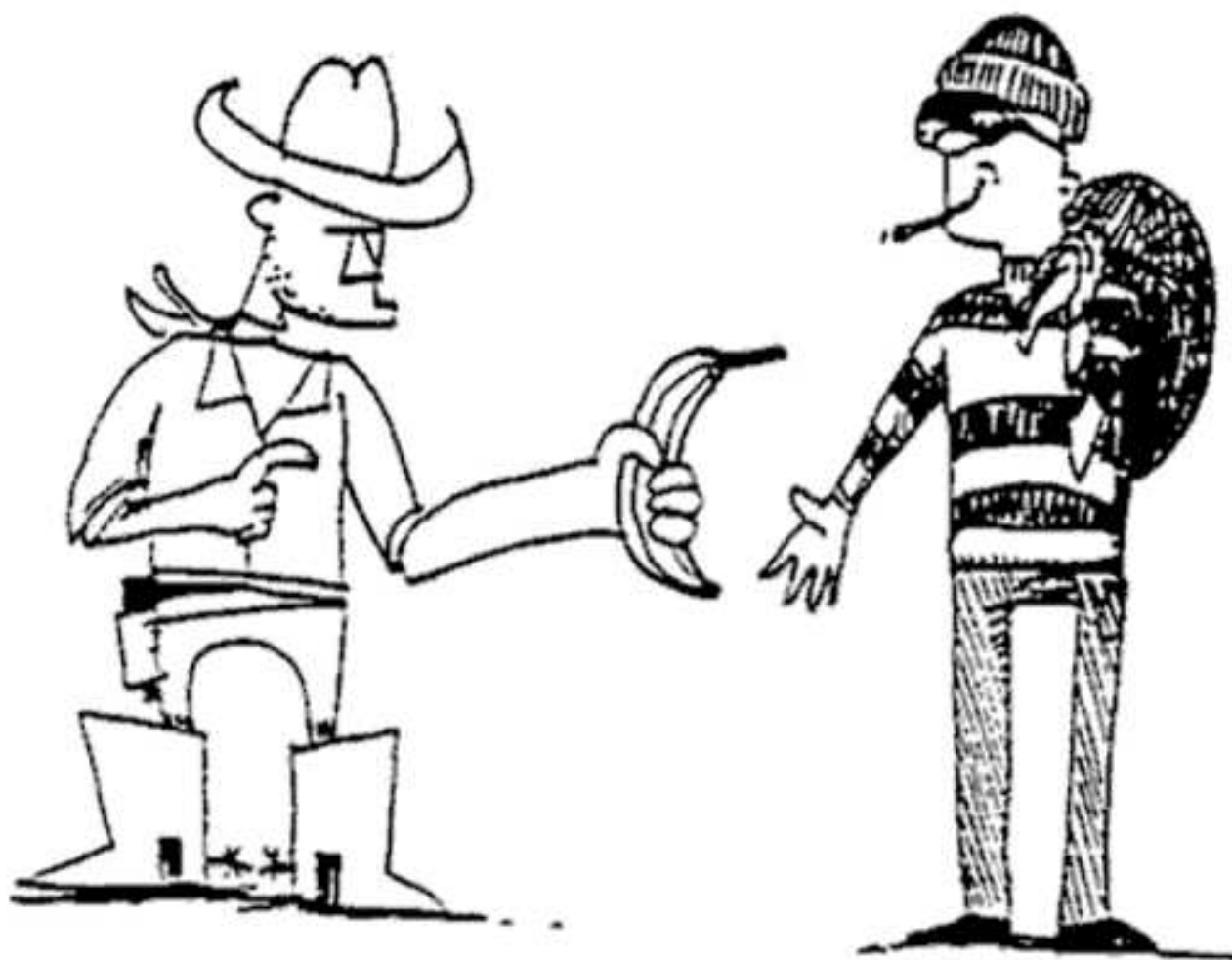
- 1
- 2
- 3
- 4 Branigan, H. P., Pickering, M. J., & Cleland, A. (2000). Syntactic co-ordination in
- 5 dialogue. *Cognition*, 75, B 13–25.
- 6
- 7 Branigan, H. P., Pickering, M. J., Pearson, J. M., & McLean, J. F. (2010). Linguistic
- 8 alignment between people and computers. *Journal of Pragmatics*, 42(9), 2355–
- 9 2368.
- 10
- 11 Branigan, H. P., Pickering, M. J., Pearson, J. M., McLean, J. F., & Brown, A. (2011). The
- 12 role of beliefs in lexical alignment: Evidence from dialogs with humans and
- 13 computers. *Cognition*, 121(1), 41–57.
- 14
- 15 Branigan, H. P., Pickering, M. J., Pearson, J. M., McLean, J. F., & Nass, C. (2003).
- 16 Syntactic alignment between computers and people: the role of belief about
- 17 mental states. In *Proceedings of the Twenty-fifth Annual Conference of the*
- 18 *Cognitive Science Society* (pp. 186–191). Boston, MA: Erlbaum, Mahwah.
- 19
- 20 Brennan, S. E. (1996). Lexical entrainment in spontaneous dialog. In *Proceedings of the*
- 21 *International Symposium on Spoken Dialogue* (pp. 41–44). Philadelphia, USA.
- 22
- 23 Brennan, S. E. (1998). The grounding problem in conversations with and through
- 24 computers. *Social and Cognitive Psychological Approaches to Interpersonal*
- 25 *Communication*, 201–225.
- 26
- 27 Brennan, S. E., & Clark, H. H. (1996). Conceptual pacts and lexical choice in
- 28 conversation. *Journal of Experimental Psychology: Learning, Memory, and*
- 29 *Cognition*, 22(6), 1482–1493.
- 30
- 31 Brennan, S. E., & Ohaeri, J. O. (1994). Effects of message style on users' attributions
- 32 toward agents. In *Conference Companion on Human Factors in Computing*
- 33 *Systems* (pp. 281–282). New York, NY, USA: ACM.
- 34
- 35 Brockmann, C., Isard, A., Oberlander, J., & White, M. (2005). Modelling alignment in
- 36 affective dialogue. In *Proceedings of the UM-05 Workshop on Adapting the*
- 37 *Interaction Style to Affective Factors*. Edinburgh.
- 38
- 39 Chang, F., Dell, G. S., & Bock, K. (2006). Becoming syntactic. *Psychological Review*,
- 40 113(2), 234–272.
- 41
- 42 Chartrand, T., & Bargh, J. A. (1999). The chameleon effect: The perception-behaviour
- 43 link and social interaction. *Journal of Personality and Social Psychology*, 76,
- 44 893–910.
- 45
- 46 Clark, H. H. (1973). The language-as-fixed-effects fallacy: A critique of language
- 47 statistics in psychological research. *Journal of Verbal Learning and Verbal*
- 48 *Behavior*, 12, 335–359.
- 49
- 50 Clark, H. H. (1996). *Using Language*. Cambridge University Press.
- 51
- 52 Clark, H., & Haviland, S. (1977). Comprehension and the given-new contract. In
- 53 *Discourse Production and Comprehension. Discourse Processes: Advances in*
- 54 *Research and Theory* (Vol. 1, pp. 1–40). Norwood, NJ 07648: Ablex Publishing
- 55 Corporation.
- 56
- 57 Clark, H. H., & Brennan, S. E. (1991). Grounding in communication. In *Perspectives on*
- 58 *socially shared cognition* (pp. 127–149). American Psychological Association.
- 59
- 60 Cleland, A., & Pickering, M. J. (2003). The use of lexical and syntactic information in
- 61 language production: Evidence from the priming of noun-phrase structure.
- 62 *Journal of Memory and Language*, 49(2), 214–230.
- 63
- 64
- 65

- 1 Erceg-Hurn, D. M., & Miroseovich, V. M. (2008). Modern robust statistical methods: an
2 easy way to maximize the accuracy and power of your research. *The American*
3 *Psychologist*, 63(7), 591–601.
- 4 Field, A., Miles, J., & Field, Z. (2012). *Discovering statistics using R*. Los Angeles;
5 London: SAGE.
- 6 Fogg, B. J., & Nass, C. (1997). Silicon sycophants: the effects of computers that flatter.
7 *International Journal of Human-Computer Studies*, 46(5), 551–561.
- 8 Fussell, S. R., & Krauss, R. M. (1992). Coordination of knowledge in communication:
9 Effects of speakers' assumptions about what others know. *Journal of Personality*
10 *and Social Psychology*, 62(3), 378–391.
- 11 Garrod, S., & Anderson, A. (1987). Saying what you mean in dialogue: A study in
12 conceptual and semantic co-ordination. *Cognition*, 27(2), 181–218.
- 13 Garrod, S., & Pickering, M. J. (2009). Joint action, interactive alignment, and dialogue.
14 *Topics in Cognitive Science*, 1, 292–304.
- 15 Giles, H., Coupland, J., & Coupland, N. (1991). *Contexts of accommodation:*
16 *developments in applied sociolinguistics*. Cambridge University Press.
- 17 Gilquin, G., & Gries, S. (2009). Corpora and experimental methods: A state-of-the-art
18 review. *Corpus Linguistics and Linguistic Theory*, 5(1), 1–26.
- 19 Gries, S. T., & Stefanowitsch, A. (2004). Extending collostructional analysis: A corpus-
20 based perspective on 'alternations'. *International Journal of Corpus Linguistics*,
21 9(1), 97–129.
- 22 Hassenzahl, M. (2001). The effect of perceived hedonic quality on product appealingness.
23 *International Journal of Human-Computer Interaction*, 13(4), 481–499.
- 24 Howes, C., Healey, P. G. T., & Purver, M. (2010). Tracking lexical and syntactic
25 alignment in conversation. In *Proceedings of the Twenty-fifth Annual Conference*
26 *of the Cognitive Science Society*. Portland, Oregon.
- 27 Kennedy, A., Wilkes, A., Elder, L., & Murray, W. S. (1988). Dialogue with machines.
28 *Cognition*, 30(1), 37–72.
- 29 Keselman, H. J., Algina, J., Lix, L. M., Wilcox, R. R., & Deering, K. N. (2008). A
30 generally robust approach for testing hypotheses and setting confidence intervals
31 for effect sizes. *Psychological Methods*, 13(2), 110–129.
- 32 Kiesler, S., Powers, A., Fussell, S. R., & Torrey, C. (2008). Anthropomorphic
33 Interactions with a robot and robot-like agent. *Social Cognition*, 26(2), 169–181.
- 34 King, W. J., & Ohya, J. (1996). The representation of agents: anthropomorphism, agency,
35 and intelligence. In *Conference Companion on Human Factors in Computing*
36 *Systems* (pp. 289–290). New York, NY, USA: ACM.
- 37 Le Bigot, L., Terrier, P., Amiel, V., Poulain, G., Jamet, E., & Rouet, J.-F. (2007). Effect
38 of modality on collaboration with a dialogue system. *International Journal of*
39 *Human-Computer Studies*, 65(12), 983–991.
- 40 Levitan, R., Gravano, A., Willson, L., Benus, S., Hirschberg, J., & Nenkova, A. (2012).
41 Acoustic-prosodic Entrainment and Social Behavior. In *Proceedings of the 2012*
42 *Conference of the North American Chapter of the Association for Computational*
43 *Linguistics: Human Language Technologies* (pp. 11–19). Stroudsburg, PA, USA:
44 Association for Computational Linguistics.
- 45 Mair, P., Schoenbrodt, F., & Wilcox, R. R. (2014). *WRS2: Wilcox robust estimation and*
46 *testing*.

- Meddeb, E. J., & Frenz-Belkin, P. (2010). What? I Didn't Say THAT!: Linguistic strategies when speaking to write. *Journal of Pragmatics*, 42(9), 2415–2429.
- Meyer, D. E., & Schvaneveldt, R. W. (1971). Facilitation in recognizing pairs of words: evidence of a dependence between retrieval operations. *Journal of Experimental Psychology*, 90(2), 227–234.
- Nalin, M., Baroni, I., Kruijff-Korabayova, I., Canamero, L., Lewis, M., Beck, A., ... Sanna, A. (2012). Children's adaptation in multi-session interaction with a humanoid robot. In *2012 IEEE RO-MAN* (pp. 351–357).
- Nass, C., & Moon, Y. (2000). Machines and Mindlessness: Social Responses to Computers. *Journal of Social Issues*, 56(1), 81–103.
- Nass, C., Steuer, J., & Tauber, E. R. (1994). Computers are Social Actors. In *Proceedings of CHI 94* (pp. 72–78). Boston, MA, USA: ACM.
- Nenkova, A., Gravano, A., & Hirschberg, J. (2008). High Frequency Word Entrainment in Spoken Dialogue. In *Proceedings of the 46th Annual Meeting of the Association for Computational Linguistics on Human Language Technologies: Short Papers* (pp. 169–172). Stroudsburg, PA, USA: Association for Computational Linguistics.
- Oksanen, J., Guillaume Blanchet, F., Kindt, R., Legendre, P., Minchin, P. R., O'Hara, B., ... Wagner, H. (2015). *vegan: Community Ecology Package* (Version 2.2-1).
- Osgood, C. E. (1957). *The Measurement of Meaning*. University of Illinois Press.
- Oviatt, S., Bernard, J., & Levow, G. A. (1998). Linguistic adaptations during spoken and multimodal error resolution. *Language and Speech*, 41 (Pt 3-4), 419–442.
- Oviatt, S., Darves, C., & Coulston, R. (2004). Toward adaptive conversational interfaces: Modeling speech convergence with animated personas. *ACM Transactions on Computer-Human Interaction*, 11(3), 300–328.
- Pickering, M. J., & Branigan, H. P. (1998). The representation of verbs: Evidence from syntactic priming in language production. *Journal of Memory and Language*, 39, 633–651.
- Pickering, M. J., Branigan, H. P., & McLean, J. F. (2002). Constituent Structure Is Formulated in One Stage. *Journal of Memory and Language*, 46(3), 586–605.
- Pickering, M. J., & Garrod, S. (2004). Towards a mechanistic psychology of dialogue. *Behavioral and Brain Sciences*, 27, 169–225.
- Pickering, M. J., & Garrod, S. (2006). Alignment as the Basis for Successful Communication. *Research on Language and Computation*, 4(2-3), 203–228.
- R Core Team. (2014). *R: A language and environment for statistical computing* (Version 3.1.2). Vienna, Austria: R Foundation for Statistical Computing.
- Reitter, D., & Moore, J. D. (2007). Predicting success in dialogue. In *Proceedings of the 45th Annual Meeting-Association for Computational Linguistics* (pp. 808–815). Prague, Czech Republic.
- Stoyanchev, S., & Stent, A. (2009). Lexical and syntactic priming and their impact in deployed spoken dialog systems. In *Proceedings of Human Language Technologies: The 2009 Annual Conference of the North American Chapter of the Association for Computational Linguistics, Companion Volume: Short Papers* (pp. 189–192). Stroudsburg, PA, USA: Association for Computational Linguistics.
- Suzuki, N., & Katagiri, Y. (2007). Prosodic alignment in human–computer interaction. *Connection Science*, 19(2), 131–141.

1
2
3
4 Van Baaren, R., Janssen, L., Chartrand, T., & Dijksterhuis, A. (2009). Where is the love?
5 the social aspects of mimicry. *Philosophical Transactions of the Royal Society B*,
6 364, 2381–2389.
7
8
9
10
11
12
13
14
15
16
17
18
19
20
21
22
23
24
25
26
27
28
29
30
31
32
33
34
35
36
37
38
39
40
41
42
43
44
45
46
47
48
49
50
51
52
53
54
55
56
57
58
59
60
61
62
63
64
65

Figure 1 file
[Click here to download high resolution image](#)



OFFER



KICK

Figure 3 file

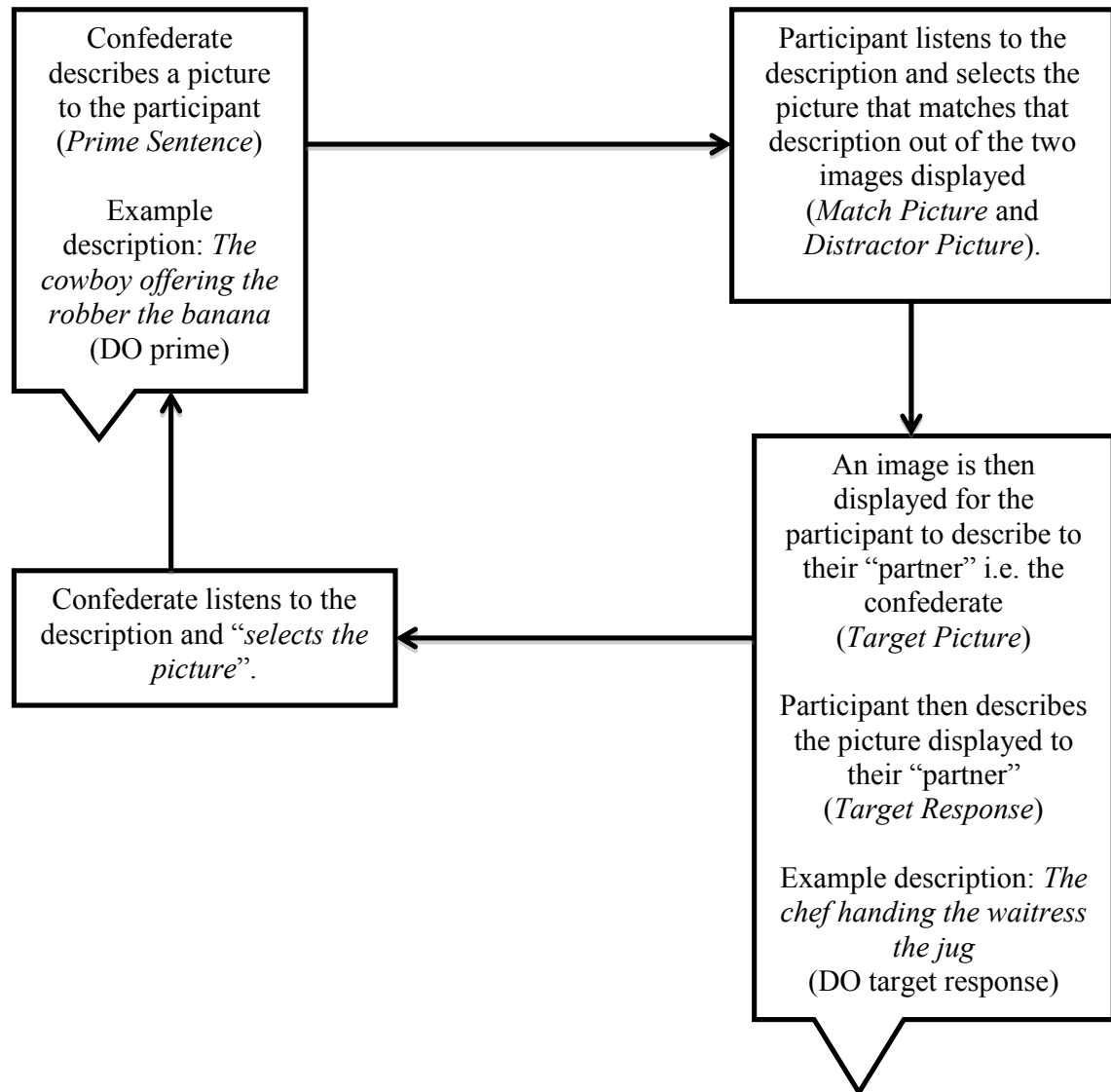


Figure 4 file
[Click here to download high resolution image](#)

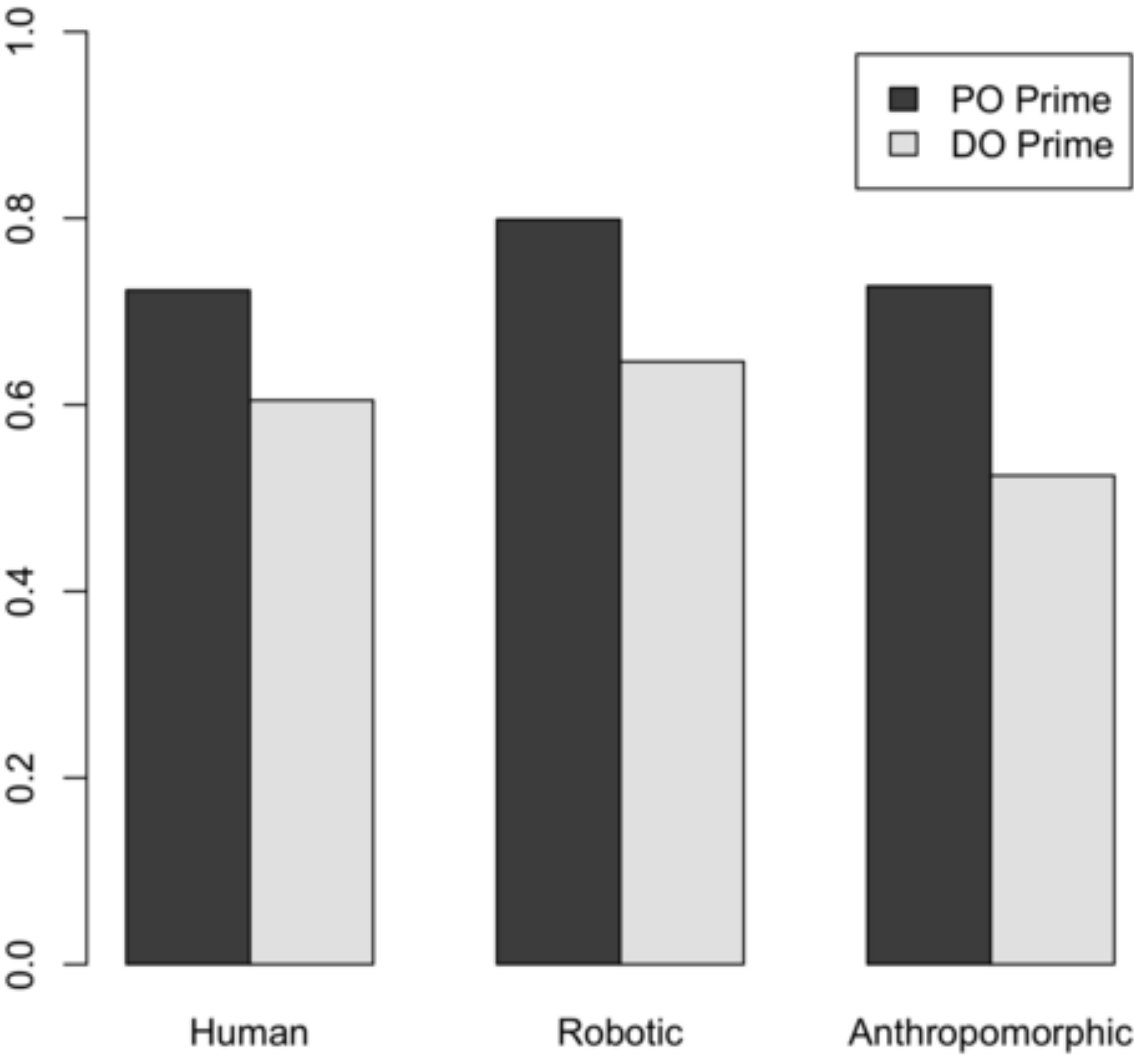


Figure 5 file
[Click here to download high resolution image](#)

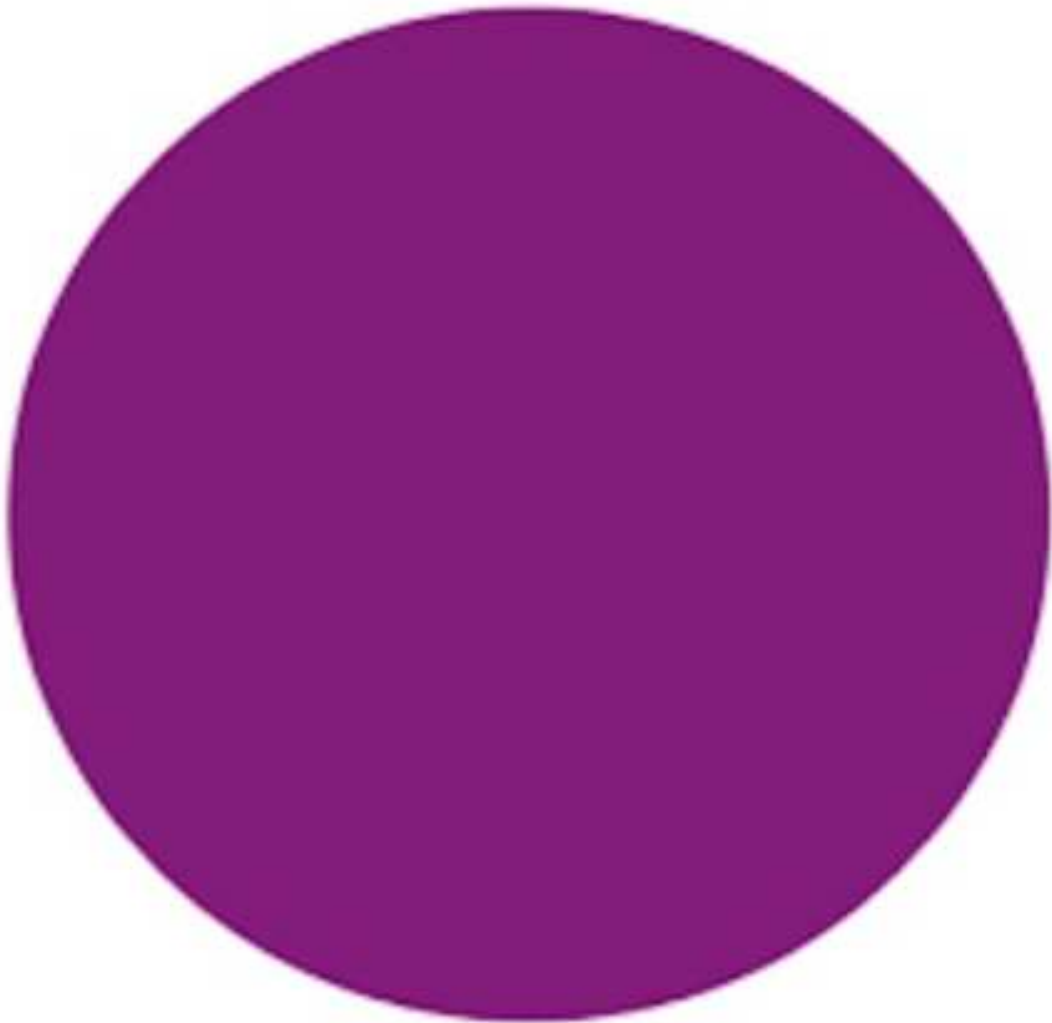


Figure 6 file
[Click here to download high resolution image](#)

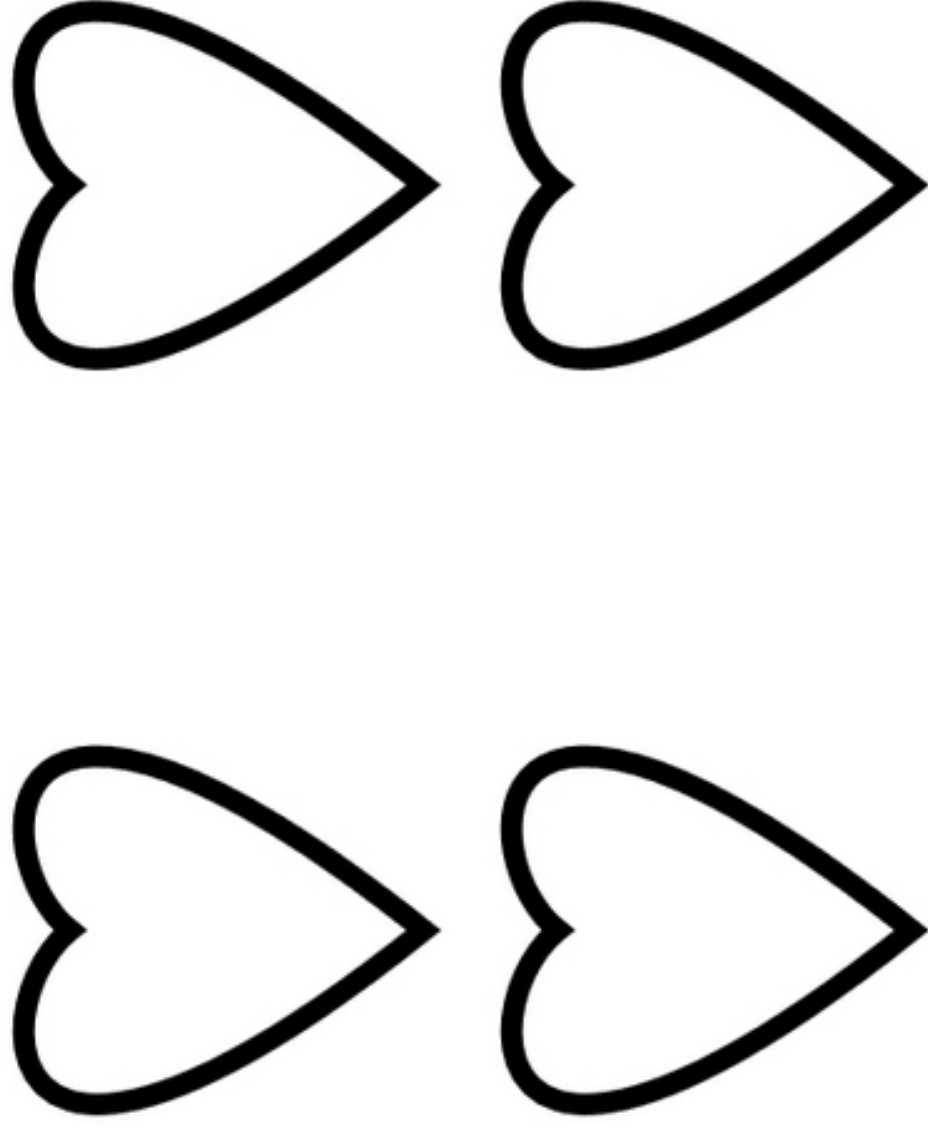


Figure 7 file
[Click here to download high resolution image](#)

