



THE UNIVERSITY *of* EDINBURGH

Edinburgh Research Explorer

Enrichment and characterization of a bacteria consortium capable of heterotrophic nitrification and aerobic denitrification at low temperature

Citation for published version:

Yao, S, Ni, J, Chen, Q & Borthwick, AGL 2013, 'Enrichment and characterization of a bacteria consortium capable of heterotrophic nitrification and aerobic denitrification at low temperature', *Bioresource technology*, vol. 127, pp. 151-157. <https://doi.org/10.1016/j.biortech.2012.09.098>

Digital Object Identifier (DOI):

[10.1016/j.biortech.2012.09.098](https://doi.org/10.1016/j.biortech.2012.09.098)

Link:

[Link to publication record in Edinburgh Research Explorer](#)

Document Version:

Peer reviewed version

Published In:

Bioresource technology

General rights

Copyright for the publications made accessible via the Edinburgh Research Explorer is retained by the author(s) and / or other copyright owners and it is a condition of accessing these publications that users recognise and abide by the legal requirements associated with these rights.

Take down policy

The University of Edinburgh has made every reasonable effort to ensure that Edinburgh Research Explorer content complies with UK legislation. If you believe that the public display of this file breaches copyright please contact openaccess@ed.ac.uk providing details, and we will remove access to the work immediately and investigate your claim.



Accepted Manuscript

Enrichment and characterization of a bacteria consortium capable of heterotrophic nitrification and aerobic denitrification at low temperature

Shuo Yao, Jinren Ni, Qian Chen, A.G.L. Borthwick

PII: S0960-8524(12)01448-4

DOI: <http://dx.doi.org/10.1016/j.biortech.2012.09.098>

Reference: BITE 10610

To appear in: *Bioresource Technology*

Received Date: 24 July 2012

Revised Date: 25 September 2012

Accepted Date: 26 September 2012

Please cite this article as: Yao, S., Ni, J., Chen, Q., Borthwick, A.G.L., Enrichment and characterization of a bacteria consortium capable of heterotrophic nitrification and aerobic denitrification at low temperature, *Bioresource Technology* (2012), doi: <http://dx.doi.org/10.1016/j.biortech.2012.09.098>

This is a PDF file of an unedited manuscript that has been accepted for publication. As a service to our customers we are providing this early version of the manuscript. The manuscript will undergo copyediting, typesetting, and review of the resulting proof before it is published in its final form. Please note that during the production process errors may be discovered which could affect the content, and all legal disclaimers that apply to the journal pertain.



1
2 **Enrichment and characterization of a bacteria consortium capable of**
3
4 **heterotrophic nitrification and aerobic denitrification at low temperature**
5
6

7 Shuo Yao^a, Jinren Ni^{a*}, Qian Chen^a, Alistair G. L. Borthwick^b
8
9

10 ^aDepartment of Environmental Engineering, Peking University; The Key Laboratory of
11
12 Water and Sediment Sciences, Ministry of Education, Beijing 100871, China
13
14

15 ^bDepartment of Civil and Environmental Engineering, University College Cork, Cork,
16
17
18 Ireland
19
20

21
22
23
24 *Corresponding author:
25

26 Jinren Ni;
27

28
29 Ying Jie Communication Center 417N, Peking University, Beijing 100871, China;
30
31

32 Tel.: +86-10-62751185; fax: +86-10-62756526;
33
34

35 E-mail address: nijinren@iee.pku.edu.cn
36
37
38
39
40
41
42
43
44
45
46
47
48
49
50
51
52
53
54
55
56
57
58
59
60
61
62
63
64
65

Abstract

Nitrogen removal in wastewater treatment plants is usually severely inhibited under cold temperature. The present study proposes bioaugmentation using psychrotolerant heterotrophic nitrification-aerobic denitrification consortium to enhance nitrogen removal at low temperature. A functional consortium has been successfully enriched by stepped increase in DO concentration. Using this consortium, the specific removal rates of ammonia and nitrate at 10 °C reached as high as 3.1 mg-N/(g-SS·h) and 9.6 mg-N/(g-SS·h) respectively. PCR-DGGE and clone library analysis both indicated a significant reduction in bacterial diversity during enrichment. Phylogenetic analysis based on nearly full-length 16S rRNA genes showed that *Alphaproteobacteria*, *Deltaproteobacteria* and particularly *Bacteroidetes* declined while *Gammaproteobacteria* (all clustered into *Pseudomonas* sp.) and *Betaproteobacteria* (mainly *Rhodoferrax ferrireducens*) became dominant in the enriched consortium. It is likely that *Pseudomonas* spp. played a major role in nitrification and denitrification, while *Rhodoferrax ferrireducens* and its relatives utilized nitrate as both electron acceptor and nitrogen source.

Keywords: low temperature; enrichment; heterotrophic nitrification; aerobic denitrification; 16S rRNA gene;

1. Introduction

During the last few decades, the importance of nutrient removal has increased as a result of the necessity to avoid eutrophication of receiving waters. The most common, efficient, and cost-effective way to remove nitrogen from municipal and industrial wastewaters is biological treatment which normally involves autotrophic nitrification and anoxic denitrification. However, the implementation of biological technology is very challenging in the winter months due to high sensitivity of autotrophic nitrifiers to low temperature. Randall and Buth (1984) demonstrated that both nitrite and nitrate formation were strongly inhibited at temperatures of 10 °C or less. Studies of various wastewater treatment systems employing nitrification have reported that failures occurred during the winter (Ilies and Mavinic, 2001; Kim et al., 2006). Additionally, the reliability of denitrification on the temperature was increased when temperature fell below 10°C (Carrera et al., 2003).

Recent studies have highlighted the existence of bacteria which are both heterotrophic nitrifier and aerobic denitrifier, such as *Alcaligenes faecalis* (Joo et al., 2005), *Acinetobacter calcoaceticus* (Zhao et al., 2010), *Pseudomonas stutzeri* (Zhang et al., 2011), and *Bacillus subtilis* (Yang et al., 2011). Under aerobic conditions, these heterotrophic microorganisms are able to oxidize ammonia to hydroxylamine, nitrite, or nitrate and immediately denitrify these products to N₂O and/or N₂. As a result, ammonium compounds can be converted to gaseous products in a single aeration phase. Due to their useful characteristics, heterotrophic nitrifying-aerobic denitrifying

1
2 microorganisms have already been applied in the bioaugmentation treatment of
3
4 nitrogenous wastewater (Bouchez et al., 2009; Joo et al., 2006; Patureau et al., 2001).
5
6

7 Under cold temperatures conditions, bioaugmentation using heterotrophic
8
9 nitrifying-aerobic denitrifying microorganisms holds obvious advantages over
10
11 conventional autotrophic nitrification and anoxic denitrification: (1) heterotrophic
12
13 nitrifier possess better tolerance to low temperature compared with autotrophic nitrifier
14
15 (Eckenfelder, 2000); (2) hardly any nitrite/nitrate would be present in the effluent of
16
17 aerobic tank because nitrification products are denitrified simultaneously; and (3)
18
19 heterotrophs grow faster and so should easily be retained in the treatment system.
20
21 However, such studies have rarely been conducted to date.
22
23
24
25
26
27
28

29 The present paper describes enrichment of an aerobic denitrifying consortium and
30
31 further investigation into its capability of both heterotrophic nitrification and aerobic
32
33 denitrification at 10 °C. Microbial community structure analysis was also conducted to
34
35 understand better the community alternation during enrichment and the functional group
36
37 in the enriched consortium. This study provides a basis for further applications of the
38
39 present aerobic consortium in cold bioaugmentation for nitrogen removal.
40
41
42
43
44
45
46
47
48

49 **2. Materials and Methods**

50 **2.1. Enrichment of the consortium**

51
52 Enrichment of aerobic denitrifying organisms was carried out in two identical 1 l
53
54 reactors (R1 and R2) using inorganic salts medium with the fill-and-draw cultivation .
55
56
57
58
59
60
61
62
63
64
65

1 The seed sludge was taken from the secondary sedimentation tank of a local municipal
2 wastewater treatment plant in Beijing on a cold winter's day (Mid- January). The
3
4 inorganic salts medium used contains (per liter) : 2.73 g sodium acetate; 0.306 g NH_4Cl ;
5
6
7 1 g KNO_3 ; 0.15 g KH_2PO_4 ; 0.1 g $\text{MgSO}_4 \cdot 7\text{H}_2\text{O}$; 0.006 g $\text{FeSO}_4 \cdot 7\text{H}_2\text{O}$; pH 7.0-7.3.
8
9
10 Both reactors were initially inoculated with the original seed sludge and thereby
11
12 acclimation commenced. Both systems were operated at a cycle of 24 h, including
13
14 instant feeding, 20 h of aerobic reaction, 0.5 h of sludge settling, 10 min of effluent
15
16 discharge and idling. The volumetric exchange ratio was almost 100%, resulting in a
17
18 hydraulic retention time (HRT) of approximate 24 h and the nitrate loading rate of 0.14
19
20 kg/(L·d). The sludge retention time (SRT) was calculated to be around 10 d.
21
22
23 Aeration was supplied by an adjustable air pump and porous stone that provided fine
24
25 bubble aeration. In each cycle, constant aeration was supplied and the dissolved
26
27 oxygen (DO) concentration fluctuated in a definitive range during most of the aerobic
28
29 period (only increased obviously when the growth matrix were completely depleted,
30
31 typically in the last hour of the aerobic period). DO concentrations were measured
32
33 periodically in each cycle and the average value was used to represent the DO level of
34
35 the whole day. In different cycles, DO level was controlled by changing air flow rate
36
37 with the help of a gas flow meter. For R1, high amount of aeration was applied
38
39 throughout the enrichment process to ensure the DO concentration at ≈ 6.0 mg/L
40
41 (ranged 4.9-6.7 mg/L). In R2, the aeration amount was raised in two steps to ensure
42
43 DO concentration increasing from <0.5 mg/L to ≈ 3 mg/L (ranged 2.2-3.8 mg/L) and
44
45
46
47
48
49
50
51
52
53
54
55
56
57
58
59
60
61
62
63
64
65

1 then ≈ 6.0 mg/L (ranged 5.2-6.9 mg/L). The pH in both systems, which was not
2
3
4 controlled during the whole experiment, typically increased from 7.0 to 8.6 over the
5
6
7 cycle. The cultivation temperature was decreased from 15 °C to 10 °C on the seventh
8
9
10 day.

11 12 13 14 15 **2.2. Nitrogen removal performance**

16 The medium used for performance evaluation contained 2.73 g/L CH_3COONa ,
17
18 0.15 g/L KH_2PO_4 , 0.1 g/L $\text{MgSO}_4 \cdot 7\text{H}_2\text{O}$, and 0.001 g/L $\text{FeSO}_4 \cdot 7\text{H}_2\text{O}$. Furthermore,
19
20 0.577 g/L nitrate was supplied as the sole nitrogen source when nitrate removal
21
22 performance was investigated; similarly, 0.306 g/L ammonia was used as the sole
23
24 nitrogen source for assessing the ammonia removal performance. 100 mL of fresh test
25
26 medium was placed in a 250 mL shake flask, inoculated with the test biomass (washed
27
28 twice before use, initial MLSS concentration set to 800 mg/L) and then cultivated at 10
29
30 °C and 160 rpm for 12 h. DO concentration fluctuated between 1.5 and 3.2 mg/L
31
32 during the whole test. Samples were taken at 3-h intervals for measurement of COD,
33
34 NH_4^+ -N, NO_2^- -N, and NO_3^- -N.
35
36
37
38
39
40
41
42
43
44
45
46
47
48
49

50 51 52 **2.3. Analytical methods**

53 NH_4 -N, NO_2 -N and NO_3 -N were measured by Nessler's reagent
54
55 spectrophotometry, N-(1-naphthalene)-diaminoethane spectrophotometry and ultraviolet
56
57 spectrophotometric method respectively (APHA, 1998). Dissolved oxygen (DO)
58
59
60
61
62
63
64
65

1 concentration was measured by a DO meter (YSI-550A, YSI, USA). Mixed liquor
2
3
4 suspended solids (MLSS) was determined using Methods 2540 D (APHA, 1998).
5
6

7 8 9 10 **2.4. DNA extraction**

11
12 Genomic DNA was extracted from 1 mL samples using a 3S DNA isolation kit
13
14 (Shenergy Biocolor, Shanghai) according to the manufacturer's instructions. Obtained
15
16 genomic DNA was examined on an 1% agarose gel to estimate the DNA's size and
17
18 concentration, and then stored at below -20 °C.
19
20
21
22
23
24
25

26 27 **2.5. PCR-DGGE analysis**

28
29 PCR was performed using the universal bacterial primers GC-F341 (5'-
30
31 CCTACGGGAGGCAGCAG -3', attached with a GC clamp on the 5' terminus) and
32
33 R518 (5'- ATTACCGCGGCTGCTGG -3') to amplify the V3 hypervariable regions of
34
35 16S rRNA genes. The total reaction mixture of PCR consisted of 50 µl with the
36
37 following ingredients: 5 µl 10×buffer, 4 µl dNTP mix (2.5 mM each), 1 µl primer
38
39 GC-F341 (10 mM), 1 µl primer R518 (10 mM), 0.25 µl recombinant Taq DNA
40
41 polymerase (TaKaRa, Dalian, China), 5 µl of extracted DNA (diluted to approx. 2ng/ul
42
43 before use), and sterile Milli-Q water to the final volume. A touchdown PCR program
44
45
46
47 was then performed as described by Vivas et al. (2009) with the initial annealing
48
49 temperature decreased to 60 °C and the extension time in amplification reduced to 1 min.
50
51
52
53
54
55
56
57 PCR products were analyzed by electrophoresis in 2% agarose gel.
58
59
60
61
62
63
64
65

1
2 DGGE of the PCR product was performed in a polyacrylamide gel (10% w/v) with
3
4 denaturing gradients from 25% to 55% using a D-code DGGE system (Bio-rad, USA).
5
6 Electrophoresis was performed in 1×TAE buffer at 160V and 60 °C for 6h. After
7
8 electrophoresis, the gel was stained with Gelred™ (Biotium, USA) for 20 min, followed
9
10 by rinsing with Milli-Q water. The gel was then scanned with a UV transilluminator
11
12 (Bio-rad, USA) to acquire the DGGE band image.
13
14
15
16
17
18
19
20

21 **2.6. Construction of 16S rRNA gene clone libraries and sequence analysis**

22
23 Two clone libraries were constructed from the original seed sludge and the
24
25 enriched consortium in R2. PCR was performed with forward primer F27 (5'-
26
27 AGAGTTTGATCMTGGCTCAG -3') and reverse primer R1492 (5'-
28
29 TTGGYTACCTTGTTACGACT -3') to get nearly full-length (~ 1500 bp) 16S rRNA
30
31 genes. The reaction system was consistent with the conditions used for DGGE. PCR
32
33 was performed under the following conditions: 95 °C /5 min denaturation step; 35
34
35 cycles each of 95 °C /45 s, 50 °C /45 s, 72 °C /90 s; and a final extension step at 72 °C
36
37 /10 min.
38
39
40
41
42
43
44

45
46 Triplicate PCR products were pooled and purified with Qiaquick PCR Gel
47
48 Extraction Kit (QIAGEN, Stanford, CA, USA), cloned using the pGEM-T Easy Vector
49
50 System (TaKaRa, Dalian, China) with TOP10 competent *E. Coli* cells (Tiangen, Beijing,
51
52 China), and plated on LB (Luria-Bertani) plates supplied with ampicillin (Sigma).
53
54
55
56
57 Colonies were randomly picked, cultured overnight in LB broth supplemented with
58
59
60
61
62
63
64
65

1
2 ampicillin, and then sequenced on both strands using the vector primers M13F-47 and
3
4 M13R-48 in Invitrogen Inc. (Beijing, China).
5
6

7 Obtained sequences were compared with available sequences in the GenBank
8
9 database using the Basic Local Alignment Search Tool (BLAST). Phylogenetic
10
11 reconstructions were performed in MEGA 5.05 using neighbor-joining (NJ) method
12
13 with 1000 bootstrap replicates and the maximum composite likelihood model.
14
15
16
17 Diversity indices were calculated from sequence data based on the number of OTUs
18
19 (operational taxonomic units). An OUT was defined as a 16S rRNA gene sequence
20
21 group in which sequences differ by 5% or less. The Shannon diversity index H
22
23 (Shannon, 1948) was calculated as follows: $H = -\sum(p_i) (\ln p_i)$ where p_i is the proportion of
24
25 an individual OTU relative to all sequences analyzed. Library coverage C was
26
27 calculated according to the formula $C = (1 - (n_1/N)) * 100\%$, where n_1 was the number of
28
29 OTUs containing only one sequence, and N the total number of 16S rRNA gene
30
31 sequences analyzed (Good, 1953).
32
33
34
35
36
37
38
39
40
41
42

43 **3. Results and Discussion**

44 **3.1. Enrichment of the consortium**

45
46
47 Two different aeration modes have been adopted to enrich consortium capable of
48
49 aerobic denitrification at low temperature. Fig. 1 shows the time-histories of nitrate
50
51 removal performance and DO concentration during the enrichment process in R1 and
52
53
54
55
56
57 R2. Initially, with seed sludge present, nitrate removal took place under anoxic
58
59
60
61
62
63
64
65

1 conditions (R2) rather than aerobic conditions (R1), implying that the seed sludge was
2 only capable of anoxic denitrification. During enrichment with a constant air supply
3
4 (DO \approx 6 mg/L) in R1, the nitrate removal efficiency increased over time and eventually
5 saturated at about 65 %. In R2, despite the stepwise increase of DO concentration
6
7 (from $<$ 0.5 mg/L to \approx 3 mg/L and then to \approx 6 mg/L), the denitrification efficiency was
8
9 consistently above 90 % and saturated at approximately 99 %. This indicates that a
10 consortium with excellent aerobic denitrification capability at low temperature was
11
12 successfully obtained in R2.
13
14
15
16
17
18
19
20
21
22

23 As shown previously, the aeration mode played an important role in the enrichment
24 process. Alternating aerobic/anoxic conditions could lead to a high density of bacteria
25 carrying out aerobic denitrification, as reported in several studies (Frette et al., 1997;
26
27 Patureau et al., 2000). Moreover, sequential aerobic cultivation in the presence of
28
29 nitrate was found to be efficient in enriching aerobic denitrifiers (Takaya et al., 2003).
30
31 In the present study, transition from anoxic conditions to aerobic conditions via a
32
33 two-step increase in DO concentration (in R2) was found to be more efficient than
34
35 constant aerobic conditions (in R1) with regard to enrichment of aerobic denitrifiers.
36
37
38 Moreover, the reproducibility of the enrichment method and the stability of the
39
40 established system were verified. Hence the novel cultivation method applied in R2 is
41
42 convenient, effective and reliable in enriching a consortium with excellent aerobic
43
44 denitrification capability.
45
46
47
48
49
50
51
52
53
54
55
56
57
58
59
60
61
62
63
64
65

3.2. Nitrate removal performance at low temperature

Nitrate removal performance of the successfully enriched consortium in R2 was investigated under aerobic conditions at 10 °C; the seed sludge was also tested for comparison purposes. Fig. 2 presents plots of the removal of nitrate and production of nitrite as functions of time for the enriched consortium and the seed sludge cases. A dramatic decrease of nitrate was observed with the enriched culture in R2, whereas hardly any reduction in nitrate concentration occurred for the seed sludge. In the former case, approximately 70mg/L nitrate was completely removed within 9 h with low accumulation of nitrite; in other words, the specific nitrate removal rate was 7.68 mg-N/(L·h) or 9.6 mg-N/(g-SS·h).

In previous studies (Kim et al., 2002; Nakajima-Kambe et al., 2005; Vacková et al., 2011) denitrification activity at 10 °C was invariably measured under anoxic conditions (see Table 1 for a summary of the specific experimental conditions and corresponding nitrate removal rates). The presence of oxygen has severe inhibition effect on conventional denitrification process. As result, conventional denitrification can only take place under anoxic conditions. However, the consortium obtained in the present study exhibited excellent denitrifying activity under relatively high DO (1.5-3.2 mg/L) condition, which is even higher than that obtained under anoxic conditions in previous studies. With high specific denitrification rate and no restrictions of DO concentration, the present consortium could effectively denitrify total oxidized nitrogen (TON, sum of nitrate and nitrite) during the aeration phase for the realization of simultaneous

1 nitrification and denitrification (SND) process.
2
3
4
5
6

7 **3.3. Ammonia removal performance at low temperature**

8
9

10 As mentioned in Section 1, large percentage of aerobic denitrifiers are also
11 heterotrophic nitrifiers, so the heterotrophic nitrification capability of the enriched
12 aerobic denitrification consortium was further investigated. Fig. 3 plots the time
13 histories of ammonia removal and production of total oxidized nitrogen at 10 °C for the
14 enriched consortium in R2 and seed sludge cases. The enriched consortium exhibited
15 a 90% increase in ammonia removal capability over that of the seed sludge taken from a
16 municipal wastewater treatment plant. During the 12h test period, the concentration of
17 ammonia declined from 80 mg/L to less than 50 mg/L, with a corresponding specific
18 removal rate of 2.44 mg-N/(L·h) or 3.1 mg-N/(g-SS·h). This rate at 10 °C represented
19 an increase of approximate 100% over previous results from a pilot-scale sequencing
20 batch reactor using real-time control where the ammonia removal rate was 1.54 mg
21 NH₄-N/g MLSS/h at 11.9 °C (Yang et al., 2007), and > 800% increase over aerobic
22 granular sequencing batch airlift reactor (SBAR) where the specific ammonia removal
23 rate was 0.31-0.35 mg/g/h at 10 °C (Bao et al., 2009).
24
25
26
27
28
29
30
31
32
33
34
35
36
37
38
39
40
41
42
43
44
45
46
47

48 Although the present tests show that ammonia removal occurred at 10 °C, no
49 corresponding accumulation of total oxidized nitrogen was observed under aerobic
50 conditions in either the seed sludge or enriched consortium cases. Aerobic nitrification
51 test with ATU as an inhibitor for autotrophic ammonia oxidation was carried out for
52
53
54
55
56
57
58
59
60
61
62
63
64
65

1 both cultures. The results showed that the oxygen uptake rate was barely depressed by
2
3
4 the addition of ATU, which indicated that the autotrophic nitrification reaction was severely
5
6 inhibited in both systems. Considering that seed sludge cannot support aerobic
7
8 denitrification, the low accumulation of total oxidized nitrogen indicates that nitrification
9
10 reaction (both autotrophic nitrification and heterotrophic nitrification reaction) was strongly
11
12 inhibited. And as a result, the ammonia removal in the seed sludge system was mainly
13
14 due to bacterial assimilation as also reported elsewhere in the literature (Ilies and
15
16 Mavinic, 2001). The increased amount of removed ammonia and hardly any
17
18 accumulation of total oxidized nitrogen in the enriched culture system could probably
19
20 be attributed to heterotrophic nitrification and simultaneous aerobic denitrification (as
21
22 already observed in Section 3.2).
23
24
25
26
27
28
29
30

31
32 Consequently, bioaugmentation with the present enriched consortium holds
33
34 considerable promise for effective ammonia removal and realization of SND at low
35
36 temperature. Moreover, the relatively high cell yield should make large-scale
37
38 cultivation and further application a practical proposition. However, other
39
40 investigators discussed the possibility of slight increase of excess sludge in the
41
42 treatment system bioaugmented with similar fast-growing microorganisms, provided the
43
44 added bacteria took a small proportion in the activated sludge system (Patureau et al.,
45
46 2001). Only in high-strength wastewater treatment, excess sludge could become one
47
48 of the key issues needed to be considered (Joo et al., 2006). Also the enriched
49
50 consortium formed large flocs of about 3–4 mm size and exhibited excellent settling and
51
52
53
54
55
56
57
58
59
60
61
62
63
64
65

1
2 compaction properties, resulting in a high-quality treated effluent.
3
4
5
6

7 **3.4. PCR-DGGE analysis**

8
9

10 In order to investigate the changes in the microbial community structure during the
11 enrichment process, PCR-DGGE analysis was performed. The results, depicted in Fig.
12 4, indicate a substantial difference between the microbial community structure of the
13 enriched consortium and that of the original seed sludge, and this difference was more
14 pronounced in R2 enrichment than R1. It can be discerned that the complexity of the
15 microbial community significantly reduced during the enrichment process in R2. For
16 example, bands 4, 8-9 and 12-14, which were dominant in the DGGE profiles of the
17 seed sludge and even in R1 enrichment culture, became less intense or completely
18 disappeared in the profiles of the R2 enrichment. Meanwhile, a small number of
19 dominant bands intensified or emerged during the enrichment process in R2, such as
20 bands 20, 23 and 24. These changes imply that the microorganisms which can
21 effectively utilize nitrate under aerobic conditions became dominant, whereas others,
22 which were unable to adapt properly, declined during the selective enrichment process
23 (Chanika et al., 2011; Hilyard et al., 2008).
24
25
26
27
28
29
30
31
32
33
34
35
36
37
38
39
40
41
42
43
44
45
46
47
48
49
50

51 **3.5. Detailed bacterial community analysis based on 16S rRNA gene clone libraries**

52
53

54 To characterize the detailed bacterial community composition of the seed sludge
55 and the R2 enrichment, nearly full-length (~ 1500 bp) 16S rRNA gene clone libraries
56
57
58
59
60
61
62
63
64
65

1 were constructed. For each case, 48 clones were randomly picked and sequenced.

2
3
4 Analysis of the sequences from the seed sludge clone library revealed 32 distinct OTUs
5
6
7 while only 8 distinct OTUs were found in the R2 enrichment clone library. Diversity
8
9
10 indices was calculated to be 3.24 for the seed sludge clone library and 1.49 for the
11
12
13 enrichment library, indicating a significant reduction in bacterial diversity.

14
15 Additionally, library coverage was calculated and the results indicated a high coverage
16
17
18 in the enrichment clone library (93.18 %) and a much lower coverage (47.92 %) in the
19
20
21 seed sludge library. Generally, the outcomes from DGGE and clone library analysis
22
23
24 both indicated a significant reduction in bacterial diversity during enrichment.

25
26 However, some inconsistency of the outcomes was noted. Clone library analysis
27
28
29 provided less dominant microbial species for R2 culture than DGGE analysis. One
30
31
32 possible explanation is that 1-2 base mutation or mispairing during the PCR
33
34
35 amplification could lead to different migration on the DGGE gel and thus generation of
36
37
38 extra bands.

39
40 Phylogenetic analysis was then performed using BLAST searches at NCBI.
41
42
43 Phylum or class-level (for Proteobacteria) phylogenetic affiliations for these sequences
44
45
46 are depicted in Fig. 5. It is evident that several dominant groups in the seed sludge
47
48
49 declined, such as *Alphaproteobacteria*, *Deltaproteobacteria* and particularly
50
51
52 *Bacteroidetes* (from 41.7% in seed sludge clone library to only 4.2% in R2 enrichment).
53
54
55 Members of the *Bacteroidetes* phylum are thought to degrade complex organic matters,
56
57
58 and in the enrichment process aiming at functional group capable of nitrogen removal, it
59
60
61
62
63
64
65

1 declined as expected. In the enriched consortium, *Betaproteobacteria* and
2
3
4 *Gammaproteobacteria* have emerged to be two dominate groups, accounting for 47.9%
5
6
7 (23 out of 48) and 41.7% (20 out of 48) of the total sequences respectively. Detailed
8
9
10 phylogenetic affiliation of the sequences retrieved from R2 enrichment were
11
12 summarized in table 2 and a neighbor-joining phylogenetic tree was also constructed
13
14
15 (Fig. 6).
16

17
18 All the 20 *Gammaproteobacterial* sequences from the enrichment culture were
19
20 clustered into *Pseudomonas* sp. which originally only accounted for 2.1% (1 out of 48)
21
22 of the total sequences from the seed sludge. Several lineages of the genus
23
24 *Pseudomonas* have been reported capable of heterotrophic nitrification and aerobic
25
26 denitrification, including *P. alcaligenes* (Su et al., 2006), *Pseudomonas putida* (Kim et
27
28 al., 2008), and *Pseudomonas stutzeri* (Miyahara et al., 2010; Zhang et al., 2011).
29
30
31 Moreover, *Pseudomonas* spp. have also been found to adapt well to cold conditions and
32
33 flourish at relatively low temperature (Margesin and Schinner, 1994; Matsuo et al.,
34
35 2010). Therefore *Pseudomonas* spp., as the most abundant species in the enriched
36
37 consortium, potentially played the largest role in nitrification and denitrification under
38
39 cold temperature. Additionally, *Pseudomonas* spp. were reported to produce mainly
40
41 N_2 as end product under aerobic conditions in previous studies. For example, *P.*
42
43 *alcaligenes* AS-1 was reported to produce $1.5 \pm 0.5 \text{ mmol L}^{-1} N_2$ and $0.2 \pm 0.0 \text{ mmol L}^{-1}$
44
45 N_2O from $2.5 \pm 0.2 \text{ mmol L}^{-1} NH_4-N$ (Su et al., 2006). Moreover, *Pseudomonas*
46
47 *stutzeri* TR2 produces little N_2O under all conditions tested and thus possesses potential
48
49
50
51
52
53
54
55
56
57
58
59
60
61
62
63
64
65

1
2 to reduce N₂O emissions when applied to sewage disposal fields (Miyahara et al., 2010).

3
4 As a result, it is reasonable to infer N₂ as the main end product of the enriched

5
6 consortium.

7
8
9
10 Most of the 23 sequences affiliated with the class *Betaproteobacteria* cluster under
11
12 *Comamonadaceae*, a family of bacteria often reported in wastewater treatment systems.

13
14 Of these, 15 sequences were closely related to *Rhodoferax ferrireducens* T118, which is

15
16 a psychrotolerant, facultatively anaerobic bacterium capable of utilizing nitrate as the

17
18 electron acceptor (Finneran et al., 2003). A constraint-based, genome-scale in silico

19
20 metabolic model and laboratory studies have unveiled the genome of *R. ferrireducens*

21
22 T118 contains a respiratory nitrate reductase complex (Rfer_2792-95) and assimilatory

23
24 nitrate reductase (Rfer_2559) (Risso et al., 2009). As a result, *R. ferrireducens*

25
26 probably utilized nitrate as both electron acceptor and nitrogen source under low

27
28 temperature.

29
30 It is interesting to note that no sequences affiliated with autotrophic nitrosobacteria

31
32 were available in both clone libraries. Instead, putative heterotrophic

33
34 nitrification-aerobic denitrification bacteria became most dominant in R2 enrichment.

35
36 This lends further credence to the proposition that nitrification in the enriched

37
38 consortium is carried out by heterotrophic rather than autotrophic nitrifiers.

39 40 41 42 43 44 45 46 47 48 49 50 51 52 53 54 **4. Conclusions**

55
56 By stepwise increase of DO concentration during enrichment, a psychrotolerant

1 consortium with excellent nitrogen removal capability (specific ammonia and nitrate
2 removal rate being 3.1 mg-N/(g-SS·h) and 9.6 mg-N/(g-SS·h) and optimized community
3 structure has been obtained. Detailed community structure analysis indicated that
4
5
6
7
8
9
10 *Pseudomonas* spp. and the closest relatives of *Rhodoferrax ferrireducens* probably
11 played a major role in nitrogen removal. Bioaugmentation with this consortium can
12 potentially improve ammonia removal efficiency with little accumulation of total
13 oxidized Nitrogen during a single aeration phase, and thus offer a promising alternative
14
15
16
17
18
19
20
21 for nitrogen removal under cold temperature conditions.
22
23
24
25

26 Acknowledgements

27
28
29 Financial support from National Natural Science Foundation of China (Grant No.
30 21261140336/B070302) is very much appreciated.
31
32
33
34
35
36

37 References

- 38
39
40 [1] APHA, 1998. Standard Methods for the Examination of Water and Wastewater, 20th
41 ed. Washington, DC.
42
43
44
45 [2] Bao, R. L., Yu, S. L., Shi, W. X., Zhang, X. D. and Wang, Y. L., 2009. Aerobic
46 granules formation and nutrients removal characteristics in sequencing batch
47 airlift reactor (SBAR) at low temperature. J. Hazard. Mater. 168, 1334-1340.
48
49
50
51 [3] Bouchez, T., Patureau, D., Delgenes, J. P. and Moletta, R., 2009. Successful bacterial
52 incorporation into activated sludge flocs using alginate. Bioresour. Technol. 100,
53
54
55
56
57
58
59
60
61
62
63
64
65

- 1
2 1031-1032.
3
4
5 [4] Carrera, J., Vicent, T. and Lafuente, F. J., 2003. Influence of temperature on
6
7 denitrification of an industrial high-strength nitrogen wastewater in a two-sludge
8
9 system. *Water Sa* 29, 11-16.
10
11
12 [5] Chanika, E., Georgiadou, D., Soueref, E., Karas, P., Karanasios, E., Tsiropoulos, N.
13
14 G., Tzortzakakis, E. A. and Karpouzas, D. G., 2011. Isolation of soil bacteria able
15
16 to hydrolyze both organophosphate and carbamate pesticides. *Bioresour.*
17
18 *Technol.* 102, 3184-3192.
19
20
21 [6] Eckenfelder, W. W., 2000. *Industrial Water Pollution Control*. McGraw-Hill,
22
23
24
25
26
27 Singapore.
28
29 [7] Finneran, K. T., Johnsen, C. V. and Lovley, D. R., 2003. *Rhodoferax ferrireducens* sp.
30
31 nov., a psychrotolerant, facultatively anaerobic bacterium that oxidizes acetate
32
33 with the reduction of Fe(III). *Int. J. Syst. Evol. Microbiol.* 53, 669-673.
34
35
36 [8] Frette, L., Gejlsbjerg, B. and Westermann, P., 1997. Aerobic denitrifiers isolated
37
38 from an alternating activated sludge system. *FEMS Microbiol. Ecol.* 24,
39
40
41
42
43 363-370.
44
45 [9] Good, I.J., 1953. The population frequencies of species and the estimation of
46
47
48
49
50
51
52
53
54
55
56
57
58
59
60
61
62
63
64
65

- 1
2 Microbiol. 74, 1176-1182.
3
4
5 [11] Ilies, P. and Mavinic, D. S., 2001. The effect of decreased ambient temperature on
6
7 the biological nitrification and denitrification of a high ammonia landfill
8
9 leachate. Water Res. 35, 2065-2072.
10
11
12 [12] Joo, H. S., Hirai, M. and Shoda, M., 2005. Characteristics of ammonium removal
13
14 by heterotrophic nitrification-aerobic denitrification by *Alcaligenes faecalis* no.
15
16 4. J. Biosci. Bioeng. 100, 184-191.
17
18
19 [13] Joo, H. S., Hirai, M. and Shoda, M., 2006. Piggery wastewater treatment using
20
21 *Alcaligenes faecalis* strain No. 4 with heterotrophic nitrification and aerobic
22
23 denitrification. Water Res. 40, 3029-3036.
24
25
26 [14] Kim, D. J., Lee, D. I. and Keller, J., 2006. Effect of temperature and free ammonia
27
28 on nitrification and nitrite accumulation in landfill leachate and analysis of its
29
30 nitrifying bacterial community by FISH. Bioresour. Technol. 97, 459-468.
31
32
33 [15] Kim, M., Jeong, S. Y., Yoon, S. J., Cho, S. J., Kim, Y. H., Kim, M. J., Ryu, E. Y.
34
35 and Lee, S. J., 2008. Aerobic Denitrification of *Pseudomonas putida* AD-21 at
36
37 Different C/N Ratios. J. Biosci. Bioeng. 106, 498-502.
38
39
40 [16] Kim, Y. S., Nayve, F. R. P., Nakano, K. and Matsumura, M., 2002. Screening and
41
42 characterization of facultative psychrophilic denitrifiers for treatment of nitrate
43
44 contaminated groundwater using starch-based biodegradable carriers. Environ.
45
46 Technol. 23, 1017-1026.
47
48
49 [17] Margesin, R. and Schinner, F., 1994. Properties of cold-adapted microorganisms
50
51
52
53
54
55
56
57
58
59
60
61
62
63
64
65

- 1
2 and their potential role in biotechnology. J. Biotechnol. 33, 1-14.
3
4
5 [18] Matsuo, S., Shirai, H. and Takada, Y., 2010. Isocitrate dehydrogenase isozymes
6
7 from a psychrotrophic bacterium, *Pseudomonas psychrophila*. Arch. Microbiol.
8
9 192, 639-650.
10
11
12 [19] Miyahara, M., Kim, S. W., Fushinobu, S., Takaki, K., Yamada, T., Watanabe, A.,
13
14
15 Miyauchi, K., Endo, G., Wakagi, T. and Shoun, H., 2010. Potential of Aerobic
16
17 Denitrification by *Pseudomonas stutzeri* TR2 To Reduce Nitrous Oxide
18
19 Emissions from Wastewater Treatment Plants. Appl. Environ. Microbiol. 76,
20
21 4619-4625.
22
23
24 [20] Nakajima-Kambe, T., Okada, N., Takeda, M., Akutsu-Shigeno, Y., Matsumura, M.,
25
26
27
28
29
30
31
32
33
34
35
36
37
38
39
40
41
42
43
44
45
46
47
48
49
50
51
52
53
54
55
56
57
58
59
60
61
62
63
64
65
- [21] Patureau, D., Helloin, E., Rustrian, E., Bouchez, T., Delgenes, J. P. and Moletta, R.,
2001. Combined phosphate and nitrogen removal in a sequencing batch reactor
using the aerobic denitrifier, *Microvirgula aerodenitrificans*. Water Res. 35,
189-197.
- [22] Patureau, D., Zumstein, E., Delgenes, J. P. and Moletta, R., 2000. Aerobic
denitrifiers isolated from diverse natural and managed ecosystems. Microbial
Ecol. 39, 145-152.
- [23] Randall, C. W. and Buth, D., 1984. Nitrite buildup in activated-sludge resulting

- 1 from temperature effects. J. Water Pollution Control Federation 56, 1039-1044.
- 2
- 3
- 4 [24] Risso, C., Sun, J., Zhuang, K., Mahadevan, R., Deboy, R., Ismail, W., Shrivastava,
- 5
- 6
- 7 S., Huot, H., Kothari, S., Daugherty, S., Bui, O., Schilling, C. H., Lovley, D. R.
- 8
- 9
- 10 and Methe, B. A., 2009. Genome-scale comparison and constraint-based
- 11
- 12 metabolic reconstruction of the facultative anaerobic Fe(III)-reducer *Rhodoferrax*
- 13
- 14 *ferrireducens*. BMC Genomics 10.
- 15
- 16
- 17
- 18 [25] Shannon, C.E., 1948. A mathematical theory of communication. Bell Syst. Tech. J.
- 19
- 20
- 21 27, 623–656.
- 22
- 23
- 24 [26] Su, J. J., Yeh, K. S. and Tseng, P. W., 2006. A strain of *Pseudomonas* sp. isolated
- 25
- 26 from piggery wastewater treatment systems with heterotrophic nitrification
- 27
- 28 capability in Taiwan. Curr. Microbiol. 53, 77-81.
- 29
- 30
- 31
- 32 [27] Takaya, N., Catalan-Sakairi, M. A. B., Sakaguchi, Y., Kato, I., Zhou, Z. M. and
- 33
- 34
- 35 Shoun, H., 2003. Aerobic denitrifying bacteria that produce low levels of nitrous
- 36
- 37 oxide. Appl. Environ. Microbiol. 69, 3152-3157.
- 38
- 39
- 40 [28] Vacková, L., Srb, M., Stloukal, R. and Wanner, J., 2011. Comparison of
- 41
- 42 denitrification at low temperature using encapsulated *Paracoccus denitrificans*,
- 43
- 44 *Pseudomonas fluorescens* and mixed culture. Bioresour. Technol. 102,
- 45
- 46 4661-4666.
- 47
- 48
- 49
- 50
- 51 [29] Vivas, A., Moreno, B., Garcia-Rodriguez, S., Benitez, E., 2009. Assessing the
- 52
- 53
- 54 impact of composting and vermicomposting on bacterial community size and
- 55
- 56
- 57 structure, and microbial functional diversity of an olive-mill waste. Bioresour.
- 58
- 59
- 60
- 61
- 62
- 63
- 64
- 65

1 Technol. 100, 1319–1326.

2
3
4 [30] Yang, Q., Peng, Y. Z., Liu, X. H., Zeng, W., Mino, T. and Satoh, H., 2007. Nitrogen
5 removal via nitrite from municipal wastewater at low temperatures using
6
7 real-time control to optimize nitrifying communities. Environ. Sci. Technol. 41,
8
9
10
11
12
13 8159-8164.

14
15 [31] Yang, X. P., Wang, S. M., Zhang, D. W. and Zhou, L. X., 2011. Isolation and
16
17
18
19
20
21
22
23
24
25
26
27
28
29
30
31
32
33
34
35
36
37
38
39
40
41
42
43
44
45
46
47
48
49
50
51
52
53
54
55
56
57
58
59
60
61
62
63
64
65

nitrogen removal characteristics of an aerobic heterotrophic
nitrifying-denitrifying bacterium, *Bacillus subtilis* A1. Bioresour. Technol. 102,
854-862.

[33] Zhang, J. B., Wu, P. X., Hao, B. and Yu, Z. N., 2011. Heterotrophic nitrification
and aerobic denitrification by the bacterium *Pseudomonas stutzeri* YZN-001.
Bioresour. Technol. 102, 9866-9869.

[33] Zhao, B., He, Y. L., Hughes, J. and Zhang, X. F., 2010. Heterotrophic nitrogen
removal by a newly isolated *Acinetobacter calcoaceticus* HNR. Bioresour.
Technol. 101, 5194-5200.

Figure Captions

FIGURE 1. Time-histories of nitrate removal performance and DO concentration during enrichment process in (a) R1 and (b) R2. Symbols: open pentagons, DO concentration; closed stars, nitrate removal efficiency.

FIGURE 2. Nitrate removal performance of the enriched consortium in R2 and seed sludge at 10 °C. Symbols: closed symbols, enriched consortium in R2; open symbols, seed sludge; squares, NO_3^- -N; triangles, NO_2^- -N.

FIGURE 3. Ammonia removal performance of the enriched consortium in R2 and seed sludge at 10 °C. Symbols: closed symbols, enriched consortium in R2; open symbols, seed sludge; circles, NH_4^+ -N; diamonds, TON.

FIGURE 4. DGGE analysis of the bacterial community in seed sludge (lanes 0), enrichment consortium in R1 (lanes 1) and R2 (lanes 2).

FIGURE 5. Phylum or class-level (for Proteobacteria) phylogenetic affiliations for sequences retrieved from seed sludge and enrichment consortium in R2.

FIGURE 6. Phylogenetic tree of the enriched consortium in R2 based on nearly full-length 16S rRNA gene sequences.

TABLE 1. Specific nitrate removal rate at low temperature in several studies.

TABLE 2. Closest phylogenetic affiliation of 48 clones in R2 enrichment based on BLAST comparison in the GenBank database.

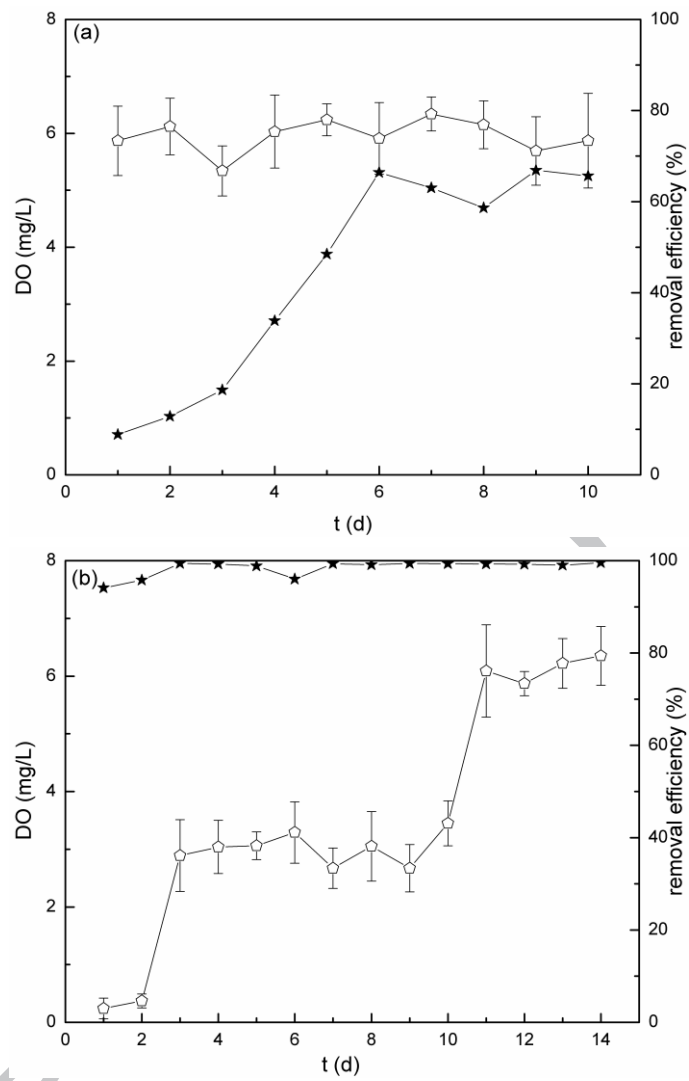


Figure 1

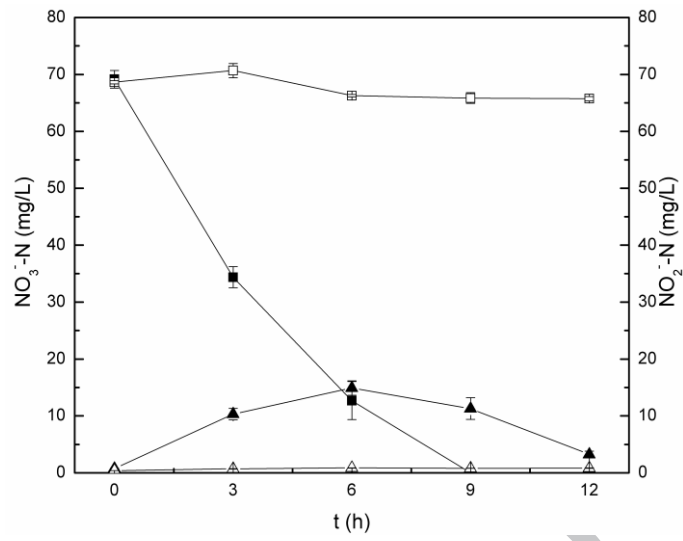


Figure 2

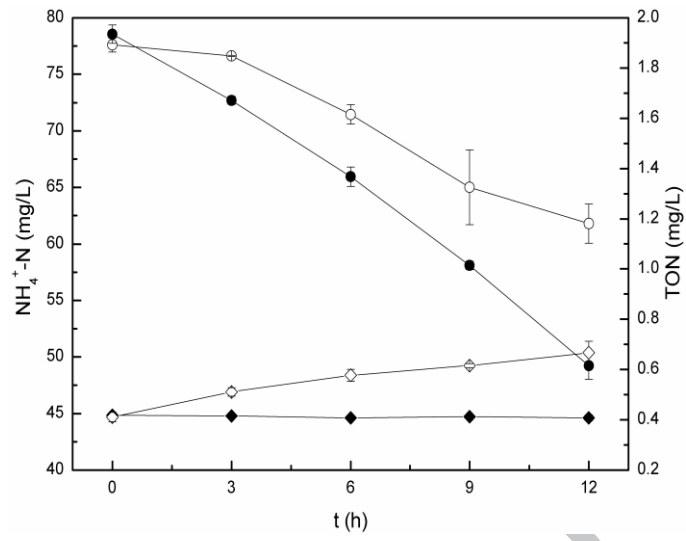


Figure 3

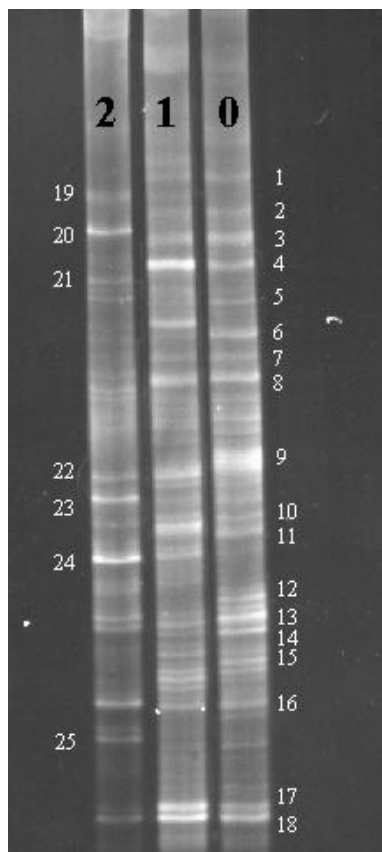


Figure 4

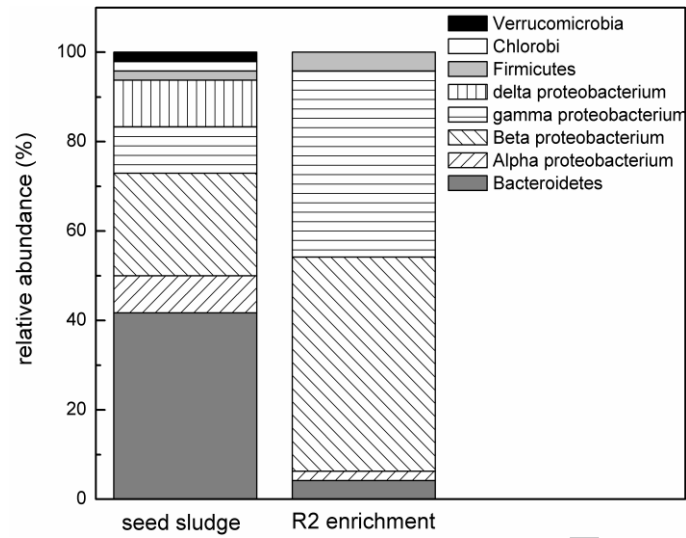


Figure 5

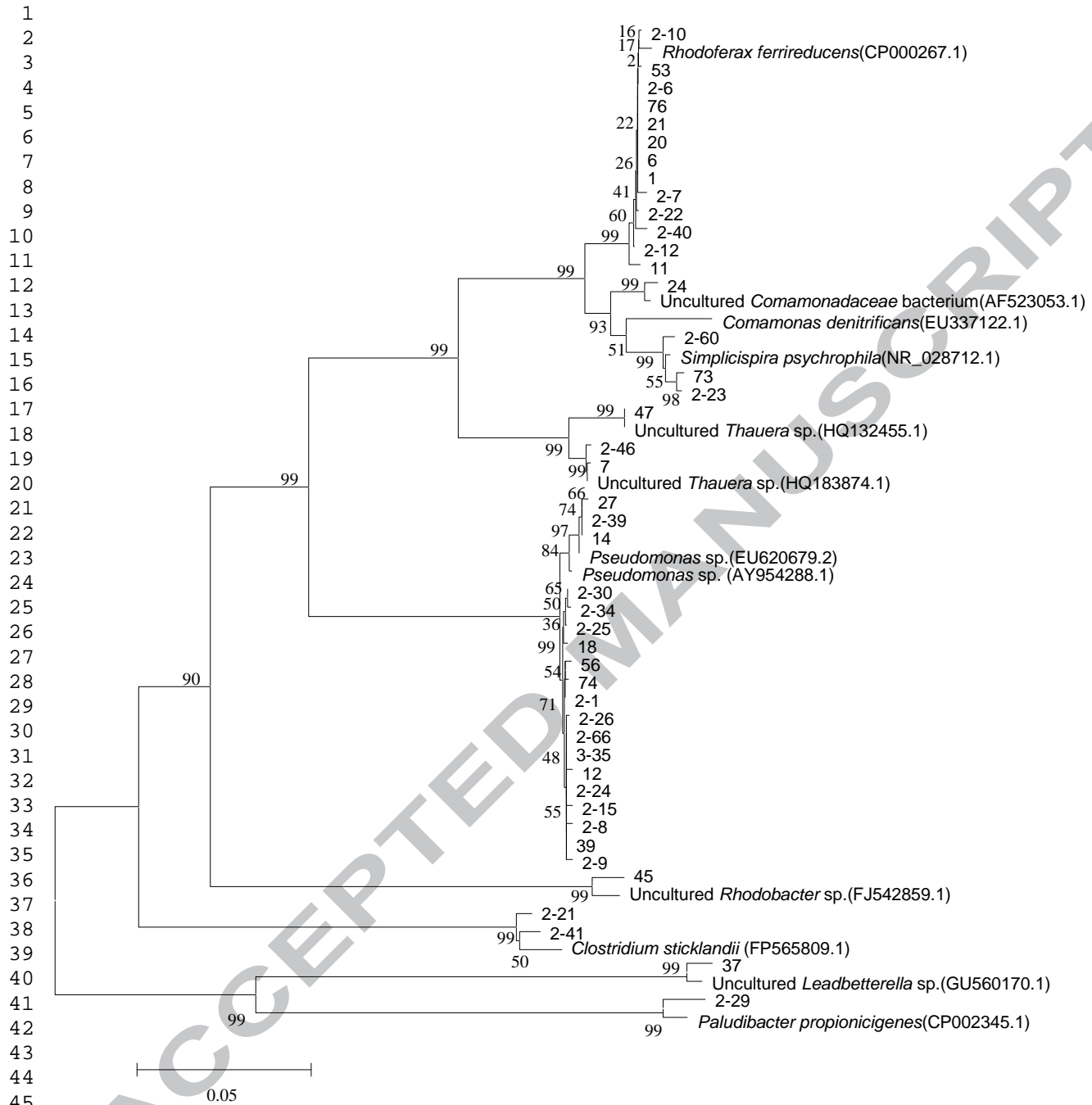


Figure 6

Table 1

Specific rate (mg-N/(g-SS·h))	Biomass	Carbon source	Oxygen condition	Reference
2.38	Pure culture	Soluble starch	Anoxic	Kim et al., 2002
1.0	Pure culture	Glucose	Anoxic	Nakajima-Kambe et al., 2005
0.45	Mixed culture	Glucose	Anoxic	Nakajima-Kambe et al., 2005
0.075	Immobilized enriched consortium	Ethanol	Anoxic	Vacková et al., 2011
0.14	Immobilized pure culture	Ethanol	Anoxic	Vacková et al., 2011
9.6	Mixed culture	Acetate	Aerobic	Present study

Table 2

No. of clones	Closest relative	Accession	% Similarity
18	<i>Pseudomonas</i> sp. SKU 16S ribosomal RNA gene, partial sequence	AY954288.1	98-99
2	<i>Pseudomonas</i> sp. HY-14 16S ribosomal RNA gene, partial sequence	EU620679.2	99
15	<i>Rhodoferrax ferrireducens</i> T118, complete genome	CP000267.1	98-99
3	<i>Simplicispira psychrophila</i> strain CA 1 16S ribosomal RNA, partial sequence	NR_028712.1	98
1	Uncultured <i>Comamonadaceae</i> bacterium clone B-23 16S ribosomal RNA gene, partial sequence	AF523053.1	98
1	<i>Comamonas denitrificans</i> strain 2B7 16S ribosomal RNA gene, partial sequence	EU337122.1	99
2	Uncultured <i>Thauera</i> sp. clone De168 16S ribosomal RNA gene, partial sequence	HQ183874.1	99
1	Uncultured <i>Thauera</i> sp. clone S-123 16S ribosomal RNA gene, partial sequence	HQ132455.1	99
1	Uncultured <i>Rhodobacter</i> sp. clone A05-08G 16S ribosomal RNA gene, partial sequence	FJ542859.1	97
2	<i>Clostridium sticklandii</i> str. DSM 519 chromosome,	FP565809.1	98-100

1
2
3
4
5
6
7
8
9
10
11
12
13
14
15
16
17
18
19
20
21
22
23
24
25
26
27
28
29
30
31
32
33
34
35
36
37
38
39
40
41
42
43
44
45
46
47
48
49
50
51
52
53
54
55
56
57
58
59
60
61
62
63
64
65

complete genome

1 *Paludibacter propionicigenes* WB4, complete genome CP002345.1 97

1 Uncultured *Leadbetterella* sp. clone W4S69 16S ribosomal GU560170.1 98

RNA gene, partial sequence

- Psychrotrophic heterotrophic nitrifying-aerobic denitrifying consortium acclimated.
- Stepwise increase of DO concentration for high efficient consortium enrichment.
- High removal rates of ammonia and nitrate (3.1 and 9.6 mg-N/(g-SS·h)) at 10 °C.
- Main functional groups identified as *Pseudomonas* sp. and *Rhodoferrax ferrireducens*.