



THE UNIVERSITY *of* EDINBURGH

## Edinburgh Research Explorer

# Retinal vessel phenotype in patients with primary open-angle glaucoma

**Citation for published version:**

Chiquet, C, Gavard, O, Arnould, L, Mautuit, T, Macgillivray, TJ, Bron, AM, Semecas, R, Trucco, E & Florent, A 2020, 'Retinal vessel phenotype in patients with primary open-angle glaucoma', *Acta Ophthalmologica*, vol. 98, no. 1. <https://doi.org/10.1111/aos.14192>

**Digital Object Identifier (DOI):**

[10.1111/aos.14192](https://doi.org/10.1111/aos.14192)

**Link:**

[Link to publication record in Edinburgh Research Explorer](#)

**Document Version:**

Peer reviewed version

**Published In:**

Acta Ophthalmologica

**Publisher Rights Statement:**

This is the authors' peer-reviewed manuscript as accepted for publication.

**General rights**

Copyright for the publications made accessible via the Edinburgh Research Explorer is retained by the author(s) and / or other copyright owners and it is a condition of accessing these publications that users recognise and abide by the legal requirements associated with these rights.

**Take down policy**

The University of Edinburgh has made every reasonable effort to ensure that Edinburgh Research Explorer content complies with UK legislation. If you believe that the public display of this file breaches copyright please contact [openaccess@ed.ac.uk](mailto:openaccess@ed.ac.uk) providing details, and we will remove access to the work immediately and investigate your claim.



# Acta Ophthalmologica

## RETINAL VESSEL PHENOTYPE IN PATIENTS WITH PRIMARY OPEN-ANGLE GLAUCOMA

Journal:	<i>Acta Ophthalmologica</i>
Manuscript ID	Draft
Wiley - Manuscript type:	Original Article
Date Submitted by the Author:	n/a
Complete List of Authors:	Chiquet, Christophe; Centre Hospitalier Universitaire Grenoble Alpes, Department of Ophthalmology Gavard, Olivier; Centre Hospitalier Universitaire Grenoble Alpes, Department of Ophthalmology Arnould, Louis; Centre Hospitalier Universitaire de Dijon, Ophthalmology Mautuit, Thibaud; Centre Hospitalier Universitaire Grenoble Alpes MacGillivray, Tom; University of Edinburgh, Clinical Research Imaging Centre Bron, Alain; Dijon University Hospital, Department of Ophthalmology Semecas, Rachel; Centre Hospitalier Universitaire Grenoble Alpes, Department of Ophthalmology Trucco, Emmanuele; University of Dundee, VAMPIRE project, Computing, School of Science and Engineering, Florent, Aptel; Centre Hospitalier Universitaire Grenoble Alpes, Department of Ophthalmology
Keywords:	glaucoma, retinal vessel, tortuosity, fractal dimension, vampire software



1  
2  
3  
4  
5  
6  
7  
8  
9  
10  
11  
12  
13  
14  
15  
16  
17  
18  
19  
20  
21  
22  
23  
24  
25  
26  
27  
28  
29  
30  
31  
32  
33  
34  
35  
36  
37  
38  
39  
40  
41  
42  
43  
44  
45  
46  
47  
48  
49  
50  
51  
52  
53  
54  
55  
56  
57  
58  
59  
60

**SERVICE  
D'OPHTALMOLOGIE**

Grenoble, 10/12/2018

Dear Editor,

Please find attached a full-length paper entitled:

**" RETINAL VESSEL PHENOTYPE IN PATIENTS WITH PRIMARY OPEN-ANGLE GLAUCOMA"** which we wish to submit to the Journal Acta Ophthalmologica.

All authors have seen and approved the manuscript and have significantly contributed to this work. The manuscript has not been published and is not being considered for publication elsewhere.

This original case-control study provides new perspectives on the relationship between glaucoma and phenotype of retinal vessels. This study showed that the morphology of the retinal vessels differed in POAG patients compared to healthy subjects. POAG was associated with a narrowing of arterial and venous retinal vessels, a higher arterio-venule ratio, and lower values of fractal parameters (marker of the anatomical complexity of the vessel network). Central retinal artery equivalent was positively associated with RNFL thickness but not visual field parameters.

The important insights of this study would promote longitudinal study or interventional study given the opportunity to test whether changing retinal vasculature could have an impact on the progression of glaucoma.

Sincerely yours,

Prof. Christophe CHIQUET, MD, PhD

**Pr C. Chiquet**  
☎ 0476765271  
✉ Fax : 0476765757  
✉ cchiquet@chu-grenoble.fr

**Pr F. Aptel**

**Dr D. Bernheim**  
**Dr K. Palombi**  
Praticiens Hospitaliers

**Dr R. Semecas**  
**Dr J. Kosacki**  
**Dr M. Gallice**  
Chefs de Clinique - Assistan

**Hôpital de Jour**  
☎ 0476768753  
✉ fax 0476765140

**Hospitalisation**  
☎ 0476768875  
✉ fax 0476768821

**Consultation**  
☎ 0476765814/8952  
✉ fax 0476765282

**Urgences**  
☎ 0476765566

**Hôpital MICHALLON**  
8ème étage

1  
2  
3  
4  
5 **RETINAL VESSEL PHENOTYPE IN PATIENTS WITH PRIMARY**  
6  
7 **OPEN-ANGLE GLAUCOMA**  
8  
9

10  
11  
12 CHIQUET C, GAVARD O, ARNOULD L, MAUTUIT T, MACGILLIVRAY TJ, BRON  
13 AM, SEMECAS R, TRUCCO E, APTEL F  
14  
15

16  
17  
18  
19  
20  
21 <sup>1</sup> Department of ophthalmology, University Hospital of Grenoble, France  
22

23 <sup>2</sup> Grenoble Alpes University, Grenoble, France  
24

25 <sup>3</sup> VAMPIRE project, Centre for Clinical Brain Sciences, University of Edinburgh,  
26  
27 Edinburgh, UK  
28

29 <sup>4</sup> Department of Ophthalmology, University Hospital of Dijon, France  
30

31 <sup>5</sup> VAMPIRE project, Computing, School of Science and Engineering, University  
32  
33 of Dundee, Dundee, UK  
34  
35  
36  
37  
38  
39  
40

41 Corresponding author: Prof. Christophe CHIQUET, Department of Ophthalmology,  
42  
43 Grenoble Alpes University Hospital, CS 10217, 38043 Grenoble cedex09, France  
44  
45 christophe.chiquet@inserm.fr  
46  
47  
48  
49

50 **Running head: RETINAL VESSELS IN PRIMARY OPEN-ANGLE GLAUCOMA**  
51  
52  
53  
54  
55  
56  
57  
58  
59  
60

## Abstract

**Purpose:** To characterize the phenotype of retinal vessels using central retinal artery equivalent (CRAE), central retinal vein equivalent (CRVE), tortuosity and fractal dimension (FD) in primary open angle glaucoma (POAG) subjects.

**Methods:** This prospective case control multicenter study included 61 POAG subjects and 61 controls matched for age, systemic hypertension and body mass index. Fundus images of the right-eye were acquired using a non-mydratic camera. CRAE, CRVE, arteriole-to-venule ratio, FD and tortuosity of the vascular network were measured using VAMPIRE software (Vessel Assessment and Measurement Platform for Images of the Retina). POAG patients underwent 24.2 sita-standard visual field and peri-papillary Optical Coherence Tomography examinations. Data were expressed as median and interquartile range (75-25<sup>th</sup> percentiles).

**Results:** The control group was comparable to the POAG group for sex ratio, refraction and intraocular pressure. The mean CRAE and the mean CRVE were significantly lower in the POAG group than in the control group (150.5 (137.9; 157.1)  $\mu\text{m}$  vs 161.3 (154.0; 168.4)  $\mu\text{m}$  and 204.8 (190.1; 218.1)  $\mu\text{m}$  vs 233.5 (222.3; 246.9)  $\mu\text{m}$ , respectively;  $p < 0.001$ ) and for fractal parameters as well. No significant difference was found for tortuosity between the two groups. There was a significant correlation between CRAE and retinal nerve fiber layer thickness ( $r = 0.27$ ;  $p = 0.03$ ). VAMPIRE parameters were not correlated with visual field indices.

**Conclusion:** POAG was associated with a narrowing of arterial and venous retinal vessels, a higher arterio-venule-ratio, and lower values of fractal dimension. The relationship between CRAE and RNFL thickness needs further investigation.

## Introduction

Primary open angle glaucoma (POAG), characterized by a progressive change of the optic nerve head and consequent visual field defects, is the second cause of blindness worldwide. Several risk factors have been associated with glaucoma, including increased intraocular pressure (IOP), which is the only treatable risk factor to date, ethnicity, myopia, and age. The implication of vascular factors is still debated. Optic nerve vascularization shares with retinal vascularization an effective autoregulation, and the absence of sympathetic innervation. Reduction of ocular perfusion pressure, associated with deteriorated vascular autoregulation, could promote ischemia and oxidative stress within the optic nerve.

Clinical studies of ocular vascular changes associated with glaucoma have mainly focused on retinal vessel diameter (Jonas et al. 1989; Ikram et al. 2005; Mitchell et al. 2005; Amerasinghe et al. 2008; Kawasaki et al. 2013; Yoo et al. 2015), and the relationship with retinal nerve fiber layer (RNFL) thickness or visual field defects (Hall et al. 2001; Zheng et al. 2009; Tham et al. 2013). For instance, a positive association was reported between decreased peripapillary arteriole diameter and visual field defects in the corresponding hemifield (Hall et al. 2001). Moreover, a narrower retinal arteriolar and venular caliber was reported in POAG patients independently of IOP levels (Mitchell et al. 2005; Amerasinghe et al. 2008). A recent longitudinal study also reported that retinal arteriolar narrowing was associated with an increased 10-year risk of glaucoma development (Kawasaki et al. 2013). The study based on retinal vascular diameters can be improved by analyzing fractal measurements that provide information about the complexity of the vessel network (McGrory et al. 2017). More recently OCT angiography was used to image the microvasculature in the superficial and deep capillary layers in the peripapillary

1  
2  
3 region. Glaucoma patients had a lower vessel density than controls (Yarmohammadi  
4 et al. 2016), and vessel density was correlated with visual field loss or RNFL  
5 thickness (Lee et al. 2016).  
6  
7  
8  
9

10 Analysis of fundus camera images offers a non-invasive measurement method  
11 to study the vascular retinal network, which reflects the efficiency of the circulation  
12 and the distribution of shear stress. VAMPIRE (Vessel Assessment and  
13 Measurement Platform for Images of the Retina, Universities of Edinburgh and  
14 Dundee) software enables quantitative analysis of the vascular morphometry. It has  
15 been used in several studies including lacunar stroke, among others (Perez-Rovira et  
16 al. 2011; MacGillivray et al. 2015; Trucco et al. 2015; McGrory et al. 2017).  
17  
18  
19  
20  
21  
22  
23  
24  
25

26 The objective of this study was to characterize the phenotype of retinal vessels  
27 using recognized retinal vascular parameters - central retinal artery equivalent  
28 (CRAE), central retinal vein equivalent (CRVE), tortuosity and fractal dimension (FD)  
29 - in eyes with POAG compared to controls matched for age, systemic hypertension  
30 and body mass index (BMI).  
31  
32  
33  
34  
35  
36  
37  
38  
39  
40  
41  
42  
43  
44  
45  
46  
47  
48  
49  
50  
51  
52  
53  
54  
55  
56  
57  
58  
59  
60

## Material and methods

### Participants

Patients were prospectively included in two separate cohorts at the University Hospital of Dijon and at the University Hospital of Grenoble (IRB #5891). This study was conducted in accordance with the ethical principles of the Declaration of Helsinki on medical research in patients. Subjects were included after they provided written and oral informed consent.

### Primary open-angle glaucoma population

The group of patients suffering from POAG consisted in 61 subjects over 18 years old (median: 61; 25-75 percentiles: (55.5; 71.5) years), with a sex-ratio women / men of 1.1, a median BMI of 22.6 (20.5; 25.1), systemic hypertension in 19.7%, a median refraction of -0.5 (-1; +1) diopters and a mean IOP of 14 (11.5; 17) mmHg (under treatment). Previous treatment history of POAG patients is summarized in [Table 2](#).

Fifty-one patients (83%) were treated with at least one hypotensive topical medication. For visual field, median MD and PSD were -4.4 (-13; -1.4) dB and 5.8 (2.6; 9.1) dB, respectively. RNFL average was 69 (58.5; 77.0)  $\mu\text{m}$ .

Diagnosis of glaucoma was based on consecutive and reliable abnormal standard automated perimetry with abnormal results on the Glaucoma Hemifield Test and pattern standard deviation outside 95% of normal limits, and characteristic optic nerve damage (asymmetric cup-to-disc ratio  $>0.2$ , rim thinning, notching, excavation or retinal nerve fiber layer defect). A gonioscopy ruled out patients with non-open angles and we excluded patients with secondary glaucomas or normal tension glaucomas. Humphrey 24.2 sita-standard visual field parameters (Mean Deviation and Pattern Standard Deviation) were recorded and the reliability indices of the



1  
2  
3 European Glaucoma Society were used: visual fields with fixation loss lower than  
4  
5 20%, false-positive errors lower than 33%, and false-negative errors lower than 33%  
6  
7 were considered as reliable. Optical Coherence Tomography examinations  
8  
9 parameters (peripapillary and sectorial retinal nerve fiber layer thickness (Cirrus HD-  
10  
11 OCT 5000, Zeiss Meditec, Dublin, CA, USA) were performed. Glaucoma IOP-  
12  
13 lowering treatments were also reported.  
14  
15  
16  
17  
18

### 19 **Control group**

20  
21 Sixty-one controls were included and were matched to the POAG patients for age (5  
22  
23 year-interval), systemic hypertension, and BMI. These controls originated from the 2  
24  
25 clinics where glaucoma patients came from. Exclusion criteria were: pregnant or  
26  
27 lactating women, aged less than 18 years, major person under guardianship or  
28  
29 unable to consent, patients with an ametropia > 3 diopters (spherical equivalent), or  
30  
31 with any ocular disease. Medical history was collected on the basis of self-  
32  
33 declaration, particularly cardiovascular risk factors high blood pressure, diabetes,  
34  
35 dyslipidemia and smoking. Visual acuity (VA, LogMar), axial length (IOL master,  
36  
37 Zeiss Meditec™, Dublin, CA, USA), IOP (non-contact tonometry; TONOREF II, Nidek  
38  
39 ™, Gamagori, Japan), anterior segment slit lamp examination and fundus  
40  
41 examination were performed to rule out ocular diseases. The control group was  
42  
43 comparable to the POAG group for age (66 (56; 71) years, p=0.9), sex ratio (1.44;  
44  
45 p=0.4), BMI (23.8 (21.7; 23.8), p=0.8), systemic hypertension (21.3%, p=0.8),  
46  
47 refraction (0 (-0.8; 0.75) diopters, p=0.2) and IOP (15 (13; 16) mmHg, p=0.4).  
48  
49  
50  
51  
52  
53  
54  
55  
56  
57  
58  
59  
60

### Acquisitions and analysis using 30 or 45-degree fundusoscopic color photograph

30 or 45-degree fundus camera images of the right-eye were acquired, centered on the optic nerve and the macula, using a non-mydratic camera: Visucam 200 (Carl Zeiss Meditec™ France) or CR2 (Canon™ Europa, Amstelveen, The Netherlands). Ten images with low quality were excluded in the POAG group due to poor image quality resulting from the presence of cataract or bad fixation.

### Image analysis

VAMPIRE measures semi-automatically morphological parameters of the retinal vessels (Perez-Rovira et al. 2011; Trucco et al. 2015). First, the optic disc contour and the macula center were located. This enabled the definition of the usual retinal coordinates (x axis through optic disc (OD) and macula centers, origin in the OD center) and circular zones around the OD, zone A (between OD center and 0.5 optic disc diameter (ODD)), zone B (between 0.5 and 1 ODD), and zone C (between 0.5 and 2 ODD, Figure 1). Manual correction could be performed when the optic disc or fovea have been incorrectly identified automatically. Vessels were subsequently detected and labeled as arterioles or venules semi-automatically (Figure 1).

Here we used CRAE, mean of the widths of the six largest arteries (from the revised formulas of Knudtson)(Knudtson et al. 2003); CRVE, a similarly for the six largest venules (Knudtson et al. 2003); arterio-venule ratio ( $AVR = CRAE/CRVE$ ); FD of the vascular network (a measure of geometric complexity of the pattern of the larger vessels in zone C)(Macgillivray et al. 2007; Doubal et al. 2010), and vascular tortuosity (the average of the six largest arteries and the average of the six largest venules)(Lisowska et al. 2014). AVR, CRAE and CRVE were computed in zone B, fractal measure and vascular tortuosity analysis in zone C. Raw measurements of

1  
2  
3 CRAE and CRVE were in pixels.  
4

5 The pixel-to-mm conversion was as follows: the conversion factor was  
6  
7 obtained by dividing the average vertical ODD (over all images, acquired with the  
8  
9 same camera at the same resolution) by the assumed average of the disc diameter  
10  
11 in microns (1850  $\mu\text{m}$ ), as previously described (Varma et al. 1994; Hubbard et al.  
12  
13 1999; Knudtson et al. 2003). The conversion factors for the CANON CR 2 and  
14  
15 VISUCAM cameras were 5.77 and 5.82 microns per pixel, respectively.  
16  
17  
18  
19  
20

### 21 **Statistical analysis**

22  
23 Statistical analysis was performed using the Statistical Package for the Social  
24  
25 Sciences program (SPSS 17.0 for Windows, Chicago, IL, USA). In order to study  
26  
27 intra- and inter-operator repeatability, 100 healthy and POAG patient's fundus  
28  
29 images were analyzed two times by two operators (RS and OG). The 2-way random  
30  
31 average intraclass correlation coefficient (ICC) was used. Quantitative data were  
32  
33 expressed as mean with 95% confidence interval of the difference.  
34  
35  
36

37 VAMPIRE and epidemiological data were expressed as median and  
38  
39 interquartile range (75-25<sup>th</sup> percentiles). Comparisons used the Wilcoxon test (for  
40  
41 matched data) and Mann-Whitney test (for independent data). Correlations used the  
42  
43 Spearman test. Intra-class correlation coefficients with a confident interval of 95%  
44  
45 were calculated, and Bland-Altman plots generated to study repeatability. The tests  
46  
47 were two-tailed and statistical significance was set at  $p < 0.05$ . Inter- and intra-  
48  
49 operator repeatability for all parameters was excellent, as shown in Table 1.  
50  
51  
52  
53  
54  
55  
56  
57  
58  
59  
60

## Results

The mean CRAE and the mean CRVE were significantly lower in the POAG group than in the control group ( $p < 0.001$ , Table 3). AVR was significantly higher in the POAG group ( $p = 0.01$ ). No significant difference was found for arterial and venous tortuosity between the two groups. POAG patients exhibited reduced values of fractal parameters ( $p < 0.001$  for all parameters).

In POAG patients, there was a significant to moderate correlation between CRAE and CRVE ( $r = 0.589$ ;  $p < 0.0001$ ). There was a low to significant correlation between CRAE and RNFL thickness ( $r = 0.270$ ;  $p = 0.03$ ; Figure 2). AVR, CRVE and fractal parameters were not significantly correlated with RNFL. For tortuosity, Amax (the maximum tortuosity measured in an image from the sample of 6 vessels) was significantly correlated with RNFL thickness, but with a low correlation coefficient ( $r = 0.353$ ;  $p < 0.005$ ). CRAE, CRVE, AVR, tortuosity and fractal parameters were not significantly correlated with visual field indices.

## Discussion

This case-control study showed that the morphometry of the retinal vessels differed in POAG patients compared to healthy subjects. POAG was associated with a narrowing of arterial and venous retinal vessels, a higher AVR, and lower values of fractal parameters. CRAE was positively associated with RNFL thickness but not visual field parameters. The narrowing of retinal vessels in glaucoma was previously reported in the past, in the peripapillary region (Jonas et al. 1989; Rader et al. 1994; Wang et al. 2007) or at a distance of 2 mm to the optic disc border using a bespoke strategy for measurements of retinal vascular diameters (Wang et al. 2007). More recently, using semi-automatic software and standardized measurements (CRAE,

1  
2  
3 CRVE), five independent studies (including between 40 and 127 POAG patients)  
4  
5 found POAG associated with reduced retinal vascular diameters (Mitchell et al. 2005;  
6  
7 Amerasinghe et al. 2008; Kawasaki et al. 2013; Wu et al. 2013; Zhang et al. 2017). In  
8  
9 order to increase the statistical power of comparisons, we carefully compared these  
10  
11 glaucoma patients with controls matched for age, BMI and systemic hypertension,  
12  
13 well-known factors affecting the retinal vascular calibers. The narrowing of both  
14  
15 arterial and venous diameters was observed in our cohort and in these previous  
16  
17 studies. In many studies a relationship was shown between glaucoma occurrence  
18  
19 and retinal vessels diameters change independently of IOP (Amerasinghe et al.  
20  
21 2008; Kawasaki et al. 2013). This point has not been studied in our population since  
22  
23 most of glaucoma patients were already medically or surgically treated.  
24  
25  
26  
27

28  
29 The AVR allows quantifying the change in vascular diameter taking into  
30  
31 account arteries (diameters defined here by CRAE) and veins (CRVE). The higher  
32  
33 AVR reported in our study suggests that venular narrowing was predominant. To our  
34  
35 best knowledge, this finding is observed for the first time in glaucoma; comparable  
36  
37 studies did not report AVR values (Amerasinghe et al. 2008; Kawasaki et al. 2013;  
38  
39 Wu et al. 2013; Zhang et al. 2017). Two previous studies reported no association  
40  
41 between diagnosed or incident glaucoma and AVR (Ikram et al. 2005; Mitchell et al.  
42  
43 2005). Furthermore, one previous study showed that the retinal vein diameters was  
44  
45 not modified in glaucoma patients (Wang et al. 2007). The differential effect  
46  
47 glaucoma on veins as compared to arteries should be further studied taken into  
48  
49 account other confounding factors such as age and blood pressure values.  
50  
51  
52  
53

54  
55 Ideally the association between glaucoma and retinal vascular narrowing  
56  
57 should be studied longitudinally. At this time, only two studies addressed this point  
58  
59 with contrasting results. In the Blue Mountains Eye Study (82 incident glaucoma  
60

1  
2  
3 patients among a population of 2561 subjects, SIVA software)(Kawasaki et al. 2013),  
4  
5 retinal arteriolar (and not venular) narrowing was associated with long-term risk of  
6  
7 POAG development (OR = 1.77 ; CI = 1.14 – 3.05). In contrast, the Rotterdam study  
8  
9 (74 incident glaucoma patients among a population of 3469 subjects, Retinal  
10  
11 Analysis software) showed no relationship between retinal vessel diameters and  
12  
13 incident glaucoma with a mean follow-up time of 6.5 years (Ikram et al. 2005). This  
14  
15 discrepancy could be related to different populations, definition of glaucoma, semi-  
16  
17 automatic softwares and/or follow-up times. VAMPIRE, similar to the SIVA software  
18  
19 application, allows the quantification of tortuosity and FD. We did not find that arterial  
20  
21 tortuosity was associated with POAG group (Amax). This contrasts with the  
22  
23 relationship found in the Singapore Malay Eye Study (SMES) between decreased  
24  
25 arteriolar tortuosity and glaucoma (OR 1.73, 95% confidence interval 1.38-2.18,  
26  
27 n=123 glaucoma subjects)(Wu et al. 2013). Since only two studies, including ours,  
28  
29 quantified tortuosity in different populations (Asian vs Caucasian, severity of  
30  
31 glaucoma), more work is needed to assess to clarify this association. The FD  
32  
33 captures the complexity of the retinal vascular tree as a geometric pattern, including  
34  
35 the degree of branching complexity (Masters 2004). A lower FD value, found in this  
36  
37 study and the SMES (Wu et al. 2013), has also been reported in advanced diabetic  
38  
39 retinopathy (Grauslund et al. 2010). We notice that fractal measurements have been  
40  
41 reported to be associated with age, blood pressure, refractive error and lens opacity  
42  
43 (Cheung et al. 2012), and more recently with ganglion cell-inner plexiform layer  
44  
45 thickness (Tham et al. 2013). Finally, data strongly suggest that glaucoma is  
46  
47 associated with decreased branching complexity. Therefore, the retinal vascular  
48  
49 abnormalities are not restricted to the reduced calibers of vessels in the peripapillary  
50  
51 region but also are extensive on zone B and C.  
52  
53  
54  
55  
56  
57  
58  
59  
60

1  
2  
3 When considering the relationship between retinal macro-vascular parameters  
4 and anatomical markers of glaucoma, such as RNFL thickness, an early study by  
5 Jonas et al. suggested that retinal vascular narrowing was associated with the  
6 severity of glaucoma (Jonas et al. 1989). This is consistent with a previous study in  
7 107 glaucoma patients, showing that retinal venular caliber was independently  
8 associated with the temporal- inferior RNFL thickness (Zheng et al. 2009). The  
9 relationship between vessel density and RNFL thickness has been also recently  
10 described using OCT angiography (Lee et al. 2016). Our study showed also that the  
11 CRAE and CRVE were not correlated with the global visual field deficit (MD). One  
12 recent study showed that retinal arteriolar diameter is not significantly different in  
13 POAG with initial parafoveal scotoma than in those with initial peripheral nasal step  
14 (Yoo et al. 2017). One other study showed that the association between the retinal  
15 arteries diameters (measured using the retinal vessel analyzer) and MD was  
16 generally weak (Resch et al. 2011). A substantial body of literature discusses the  
17 discrepancy between structure and function, considering vasculature assessment as  
18 a surrogate for structure.

19 We do acknowledge several limitations to our study. First, the size of our  
20 cohort of glaucoma patients is modest. Second, the case-control and the cross-  
21 sectional design, even though largely used in the literature, are far from optimal.  
22 Third, CRAE and CRVE cannot identify differences in diameters between  
23 peripapillary and distal vessels (Rader et al. 1994), between temporal, nasal, inferior  
24 or superior segments (Wang et al. 2007). Fourth, the potential variability in  
25 magnification error due to different camera has to be taken into account; however it  
26 was limited by the use of a pixel-micron conversion factor adjusted to the average  
27 optic disc size and the fundus camera.

1  
2  
3 In conclusion, this case-control study in Caucasians showed that POAG  
4 patients exhibited more frequently arteriolar and venular narrowing and a lower FD  
5 value. Retinal vessel narrowing was significantly associated with the mean RNFL  
6 thickness. Further studies are needed to confirm the longitudinal relationship  
7 between optic nerve tissue loss and the retinal vascular phenotype.  
8  
9  
10  
11  
12  
13  
14  
15  
16

## 17 **ACKNOWLEDGMENTS**

18 Association for Research and Teaching in Ophthalmology (ARFO, Grenoble,  
19 France). The sponsor of the funding organization had no role in the design or  
20 conduct of this research.  
21  
22  
23  
24  
25  
26

## 27 **REFERENCES**

28 Amerasinghe N, T Aung, N Cheung, CW Fong, JJ Wang, P Mitchell, S-M Saw & TY  
29 Wong (2008): Evidence of retinal vascular narrowing in glaucomatous eyes in an  
30 Asian population. *Investigative Ophthalmology & Visual Science* **49**: 5397-5402.  
31  
32 Cheung CY, GN Thomas, W Tay, MK Ikram, W Hsu, ML Lee, QP Lau & TY Wong  
33 (2012): Retinal vascular fractal dimension and its relationship with cardiovascular and  
34 ocular risk factors. *American Journal of Ophthalmology* **154**: 663-674.e661.  
35  
36  
37 Doubal FN, TJ MacGillivray, N Patton, B Dhillon, MS Dennis & JM Wardlaw (2010):  
38 Fractal analysis of retinal vessels suggests that a distinct vasculopathy causes  
39 lacunar stroke. *Neurology* **74**: 1102-1107.  
40  
41  
42 Grauslund J, A Green, R Kawasaki, L Hodgson, AK Sjolie & TY Wong (2010):  
43 Retinal vascular fractals and microvascular and macrovascular complications in type  
44 1 diabetes. *Ophthalmology* **117**: 1400-1405.  
45  
46  
47  
48  
49  
50  
51  
52  
53  
54  
55  
56  
57  
58  
59  
60



1  
2  
3 Hall JK, AP Andrews, R Walker & JR Piltz-Seymour (2001): Association of retinal  
4 vessel caliber and visual field defects in glaucoma. American Journal of  
5 Ophthalmology **132**: 855-859.  
6  
7

8  
9  
10 Hubbard LD, RJ Brothers, WN King, LX Clegg, R Klein, LS Cooper, AR Sharrett, MD  
11 Davis & J Cai (1999): Methods for evaluation of retinal microvascular abnormalities  
12 associated with hypertension/sclerosis in the Atherosclerosis Risk in Communities  
13 Study. Ophthalmology **106**: 2269-2280.  
14  
15  
16  
17

18  
19  
20 Ikram MK, S de Voogd, RCW Wolfs, A Hofman, MMB Breteler, LD Hubbard & PTVM  
21 de Jong (2005): Retinal vessel diameters and incident open-angle glaucoma and  
22 optic disc changes: the Rotterdam study. Investigative Ophthalmology & Visual  
23 Science **46**: 1182-1187.  
24  
25  
26  
27

28  
29  
30 Jonas JB, XN Nguyen & GO Naumann (1989): Parapapillary retinal vessel diameter  
31 in normal and glaucoma eyes. I. Morphometric data. Investigative Ophthalmology &  
32 Visual Science **30**: 1599-1603.  
33  
34  
35

36  
37  
38 Kawasaki R, JJ Wang, E Rochtchina, AJ Lee, TY Wong & P Mitchell (2013): Retinal  
39 vessel caliber is associated with the 10-year incidence of glaucoma: the Blue  
40 Mountains Eye Study. Ophthalmology **120**: 84-90.  
41  
42  
43

44  
45  
46 Knudtson MD, KE Lee, LD Hubbard, TY Wong, R Klein & BEK Klein (2003): Revised  
47 formulas for summarizing retinal vessel diameters. Current Eye Research **27**: 143-  
48 149.  
49  
50

51  
52  
53 Lee EJ, KM Lee, SH Lee & TW Kim (2016): OCT Angiography of the Peripapillary  
54 Retina in Primary Open-Angle Glaucoma. Invest Ophthalmol Vis Sci **57**: 6265-6270.  
55  
56  
57  
58  
59  
60

1  
2  
3 Lisowska A, R Annunziata, GK Loh, D Karl & E Trucco (2014): An experimental  
4 assessment of five indices of retinal vessel tortuosity with the RET-TORT public  
5 dataset. Conf Proc IEEE Eng Med Biol Soc **2014**: 5414-5417.  
6  
7

8  
9  
10 MacGillivray TJ, JR Cameron, Q Zhang, A El-Medany, C Mulholland, Z Sheng, B  
11 Dhillon, FN Doubal, PJ Foster, E Trucco, C Sudlow, UKB Eye & C Vision (2015):  
12 Suitability of UK Biobank Retinal Images for Automatic Analysis of Morphometric  
13 Properties of the Vasculature. PLoS One **10**: e0127914.  
14  
15

16  
17  
18 Macgillivray TJ, N Patton, FN Doubal, C Graham & JM Wardlaw (2007): Fractal  
19 analysis of the retinal vascular network in fundus images. Conference proceedings:  
20 ... Annual International Conference of the IEEE Engineering in Medicine and Biology  
21 Society. IEEE Engineering in Medicine and Biology Society. Annual Conference  
22 **2007**: 6456-6459.  
23  
24

25  
26  
27 Masters BR (2004): Fractal analysis of the vascular tree in the human retina. Annu  
28 Rev Biomed Eng **6**: 427-452.  
29  
30

31  
32  
33 McGrory S, JR Cameron, E Pellegrini, C Warren, FN Doubal, IJ Deary, B Dhillon, JM  
34 Wardlaw, E Trucco & TJ MacGillivray (2017): The application of retinal fundus  
35 camera imaging in dementia: A systematic review. Alzheimer's & Dementia  
36 (Amsterdam, Netherlands) **6**: 91-107.  
37  
38

39  
40  
41 McGrory S, AM Taylor, M Kirin, J Corley, A Pattie, SR Cox, B Dhillon, JM Wardlaw,  
42 FN Doubal, JM Starr, E Trucco, TJ MacGillivray & IJ Deary (2017): Retinal  
43 microvascular network geometry and cognitive abilities in community-dwelling older  
44 people: The Lothian Birth Cohort 1936 study. Br J Ophthalmol **101**: 993-998.  
45  
46  
47  
48  
49  
50  
51  
52  
53  
54  
55  
56  
57  
58  
59  
60

1  
2  
3 Mitchell P, H Leung, JJ Wang, E Rochtchina, AJ Lee, TY Wong & R Klein (2005):  
4  
5 Retinal vessel diameter and open-angle glaucoma: the Blue Mountains Eye Study.  
6  
7 Ophthalmology **112**: 245-250.  
8  
9

10 Perez-Rovira A, T MacGillivray, E Trucco, KS Chin, K Zutis, C Lupascu, D Tegolo, A  
11  
12 Giachetti, PJ Wilson, A Doney & B Dhillon (2011): VAMPIRE: Vessel assessment  
13  
14 and measurement platform for images of the RETina. Conference proceedings: ...  
15  
16 Annual International Conference of the IEEE Engineering in Medicine and Biology  
17  
18 Society. IEEE Engineering in Medicine and Biology Society. Annual Conference  
19  
20 **2011**: 3391-3394.  
21  
22  
23

24 Rader J, WJ Feuer & DR Anderson (1994): Peripapillary vasoconstriction in the  
25  
26 glaucomas and the anterior ischemic optic neuropathies. American Journal of  
27  
28 Ophthalmology **117**: 72-80.  
29  
30  
31

32 Resch H, D Schmidl, A Hommer, F Rensch, JB Jonas, G Fuchsjager-Mayrl, G  
33  
34 Garhofer, C Vass & L Schmetterer (2011): Correlation of optic disc morphology and  
35  
36 ocular perfusion parameters in patients with primary open angle glaucoma. Acta  
37  
38 Ophthalmol **89**: e544-549.  
39  
40  
41

42 Tham Y-C, C-Y Cheng, Y Zheng, T Aung, TY Wong & CY Cheung (2013):  
43  
44 Relationship between retinal vascular geometry with retinal nerve fiber layer and  
45  
46 ganglion cell-inner plexiform layer in nonglaucomatous eyes. Investigative  
47  
48 Ophthalmology & Visual Science **54**: 7309-7316.  
49  
50

51 Trucco E, A Giachetti, L Ballerini, D Relan, A Cavinato & TJ MacGillivray (2015):  
52  
53 Morphometric Measurements of the Retinal Vasculature in Fundus Images with  
54  
55 VAMPIRE Biomedical Image Understanding: Methods and Applications. John Wiley  
56  
57 & Sons.  
58  
59  
60

1  
2  
3 Varma R, JM Tielsch, HA Quigley, SC Hilton, J Katz, GL Spaeth & A Sommer  
4  
5 (1994): Race-, age-, gender-, and refractive error-related differences in the normal  
6  
7 optic disc. Archives of Ophthalmology (Chicago, Ill.: 1960) **112**: 1068-1076.  
8  
9

10 Wang S, L Xu, Y Wang, Y Wang & JB Jonas (2007): Retinal vessel diameter in  
11  
12 normal and glaucomatous eyes: the Beijing eye study. Clin Exp Ophthalmol **35**: 800-  
13  
14 807.  
15  
16

17 Wu R, CY-L Cheung, SM Saw, P Mitchell, T Aung & TY Wong (2013): Retinal  
18  
19 vascular geometry and glaucoma: the Singapore Malay Eye Study. Ophthalmology  
20  
21 **120**: 77-83.  
22  
23

24 Yarmohammadi A, LM Zangwill, A Diniz-Filho, MH Suh, PI Manalastas, N Fatehee, S  
25  
26 Yousefi, A Belghith, LJ Saunders, FA Medeiros, D Huang & RN Weinreb (2016):  
27  
28 Optical Coherence Tomography Angiography Vessel Density in Healthy, Glaucoma  
29  
30 Suspect, and Glaucoma Eyes. Invest Ophthalmol Vis Sci **57**: OCT451-459.  
31  
32  
33

34 Yoo E, C Yoo, B-R Lee, T-E Lee & YY Kim (2015): Diagnostic Ability of Retinal  
35  
36 Vessel Diameter Measurements in Open-Angle Glaucoma. Investigative  
37  
38 Ophthalmology & Visual Science **56**: 7915-7922.  
39  
40  
41

42 Yoo E, C Yoo, TE Lee & YY Kim (2017): Comparison of Retinal Vessel Diameter  
43  
44 Between Open-Angle Glaucoma Patients With Initial Parafoveal Scotoma and  
45  
46 Peripheral Nasal Step. Am J Ophthalmol **175**: 30-36.  
47  
48

49 Zhang Q, C Jan, CY Guo, FH Wang, YB Liang, K Cao, Z Zhang, DY Yang, R  
50  
51 Thomas, NL Wang & G Handan Eye Study (2017): Association of intraocular  
52  
53 pressure related factors and retinal vessel diameter with optic disc rim area in  
54  
55 subjects with and without primary open angle glaucoma. Clin Exp Ophthalmol.  
56  
57  
58  
59  
60

1  
2  
3 Zheng Y, N Cheung, T Aung, P Mitchell, M He & TY Wong (2009): Relationship of  
4 retinal vascular caliber with retinal nerve fiber layer thickness: the singapore malay  
5 eye study. Invest Ophthalmol Vis Sci **50**: 4091-4096.  
6  
7  
8  
9  
10  
11  
12  
13  
14  
15  
16  
17  
18  
19  
20  
21  
22  
23  
24  
25  
26  
27  
28  
29  
30  
31  
32  
33  
34  
35  
36  
37  
38  
39  
40  
41  
42  
43  
44  
45  
46  
47  
48  
49  
50  
51  
52  
53  
54  
55  
56  
57  
58  
59  
60

For Peer Review

## LEGENDS OF FIGURES

**Figure 1.** Example of retinal coordinates, zones and vasculature detection and labeling.

**Figure 2: Correlation between CRAE (microns) and average RNFL thickness**

**(microns),  $r = 0.27$ ;  $p = 0.03$ .** CRAE: central retinal artery equivalent; RNFL: retinal nerve fiber layer

For Peer Review

1  
2  
3  
4  
5  
6  
7  
8  
9  
10  
11  
12  
13  
14  
15  
16  
17  
18  
19  
20  
21  
22  
23  
24  
25  
26  
27  
28  
29  
30  
31  
32  
33  
34  
35  
36  
37  
38  
39  
40  
41  
42  
43  
44  
45  
46

**Table 1: Inter- and intra- operator repeatability for two operators, for AVR, CRAE, CRVE and tortuosity (100 images).**

CRAE: central retinal artery equivalent; CRVE: central retinal vein equivalent; AVR: arteriole-to-venule ratio; ICC: intraclass correlation coefficient; CI: confidence interval; 1: first operator, 2: second operator.

	<b>ICC 1</b>	<b>CI 95%</b>	<b>ICC 2</b>	<b>CI 95%</b>	<b>ICC inter-operator</b>	<b>CI 95%</b>
<b>AVR</b>	0.923	0.884-0.95	0.823	0.730-0.883	0.918	0.875-0.946
<b>CRAE</b>	0.941	0.910-0.961	0.914	0.869-0.943	0.944	0.915-0.963
<b>CRVE</b>	0.952	0.927- 0.968	0.968	0.952-0.979	0.979	0.968-0.986
<b>Arterial tortuosity</b>	0.969	0.952-0.979	0.958	0.937-0.972	0.972	0.957-0.981
<b>Venule tortuosity</b>	0.98	0.970-0.987	0.962	0.943-0.975	0.992	0.988-0.995

	Previous filtering surgery	Previous SLT	Mono therapy	Bi therapy	Tri therapy	Quadri therapy
Patients (n, %)	17/61 (27.9%)	7/61 (11.5%)	15/61 (24.5%)	22/61 (36%)	13/61 (21.3%)	1/61 (1.6%)

**Table 2: Treatment history of the POAG group (n = 61).**

SLT: selective Laser trabeculoplasty. Glaucoma hypotensive medications included prostaglandins, beta blockers, carbonic anhydrase inhibitors and/or alpha 2 adrenergic agonists.



	<b>Controls</b>	<b>Glaucoma subjects</b>
<b>CRAE (microns)</b>	161.3 (154.0; 168.4)	150.5 (137.9; 157.1) *
<b>CRVE (microns)</b>	233.5 (222.3; 246.9)	204.8 (190.1; 218.1) *
<b>AVR</b>	0.69 (0.65; 0.72)	0.73 (0.66; 0.79) **
<b>Arterial tortuosity</b>		
A	0,000034 (0,000013; 0,000126)	0.000049 (0.000021; 0.00014)
Amin	0,000006 (0,000002; 0,000019)	0.0000077 (0.0000024; 0.000033)
Amax	0,000224 (0,000077; 0,000551)	0.00026 (0.00012; 0.00044)
<b>Veins tortuosity</b>		
V	0,000042 (0,000023; 0,000063)	0.000041 (0.000023; 0.00066)
Vmin	0,000006 (0,000002; 0,000014)	0.0000073 (0.0000036; 0.000014)
Vmax	0,000148 (0,000098; 0,000290)	0.00014 (0.00081; 0.00027)
<b>Fractal parameters</b>		
D0a	1.59 (1.54; 1.64)	1.46 (1.39; 1.51) *
D1a	1.58 (1.53; 1.63)	1.46 (1.38; 1.51) *
D2a	1.57 (1.52; 1.62)	1.45 (1.37; 1.50) *
D0v	1.54 (1.50; 1.59)	1.44 (1.39; 1.49) *
D1v	1.53 (1.50; 1.58)	1.42 (1.39; 1.49) *
D2v	1.52 (1.49; 1.57)	1.42 (1.38; 1.48) *
D0tot	1.75 (1.69; 1.77)	1.62 (1.58; 1.69) *
D1tot	1.74 (1.68; 1.77)	1.61 (1.57; 1.61) *

D2tot	1.74 (1.67; 1.76)	1.60 (1.56; 1.67) *
-------	-------------------	---------------------

**Table 3: Central retinal artery and vein equivalents, the arteriole-to-venule ratio, vascular tortuosity and fractal parameters for the control and glaucoma groups.**

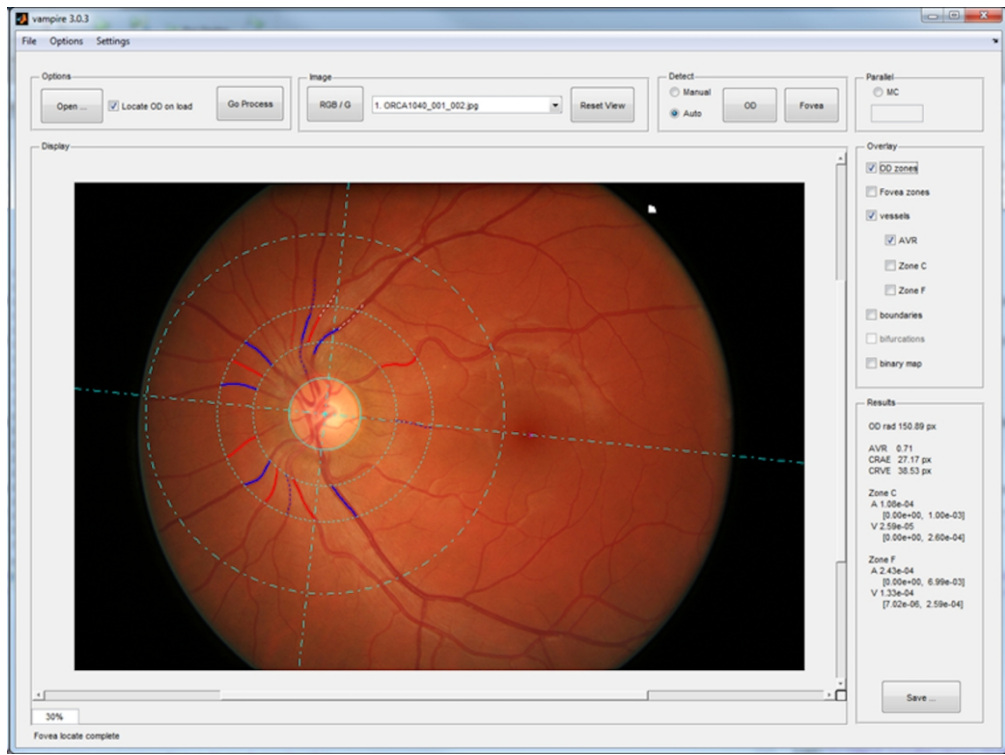
Data are expressed as median and interquartile range (75-25<sup>th</sup> percentiles).

CRAE: central retinal artery equivalent; CRVE: central retinal vein equivalent,

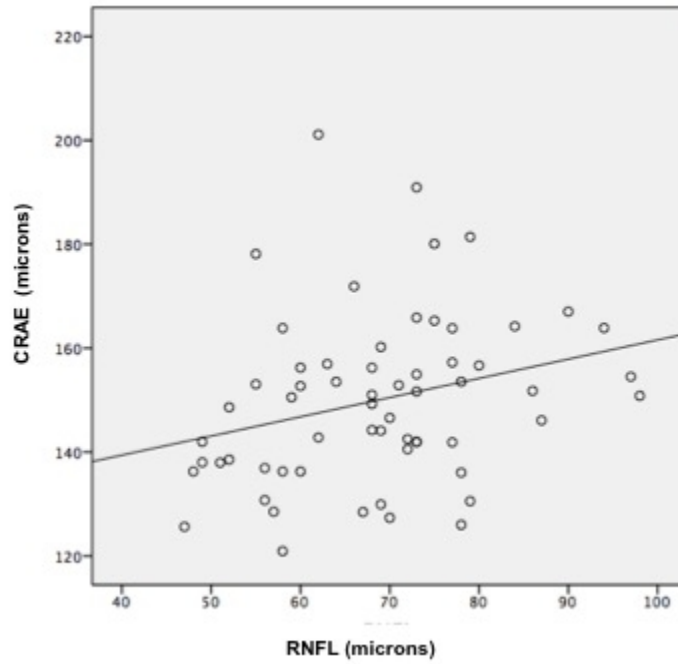
\*  $p < 0.001$  for the difference between the control and glaucoma group. \*\*  $p = 0.01$

No significant difference was found for arterial and venous tortuosity between the two groups.

1  
2  
3  
4  
5  
6  
7  
8  
9  
10  
11  
12  
13  
14  
15  
16  
17  
18  
19  
20  
21  
22  
23  
24  
25  
26  
27  
28  
29  
30  
31  
32  
33  
34  
35  
36  
37  
38  
39  
40  
41  
42  
43  
44  
45  
46  
47  
48  
49  
50  
51  
52  
53  
54  
55  
56  
57  
58  
59  
60



Example of retinal coordinates, zones and vasculature detection and labeling.



Correlation between CRAE (microns) and average RNFL thickness (microns)

122x120mm (72 x 72 DPI)

1  
2  
3  
4  
5  
6  
7  
8  
9  
10  
11  
12  
13  
14  
15  
16  
17  
18  
19  
20  
21  
22  
23  
24  
25  
26  
27  
28  
29  
30  
31  
32  
33  
34  
35  
36  
37  
38  
39  
40  
41  
42  
43  
44  
45  
46  
47  
48  
49  
50  
51  
52  
53  
54  
55  
56  
57  
58  
59  
60